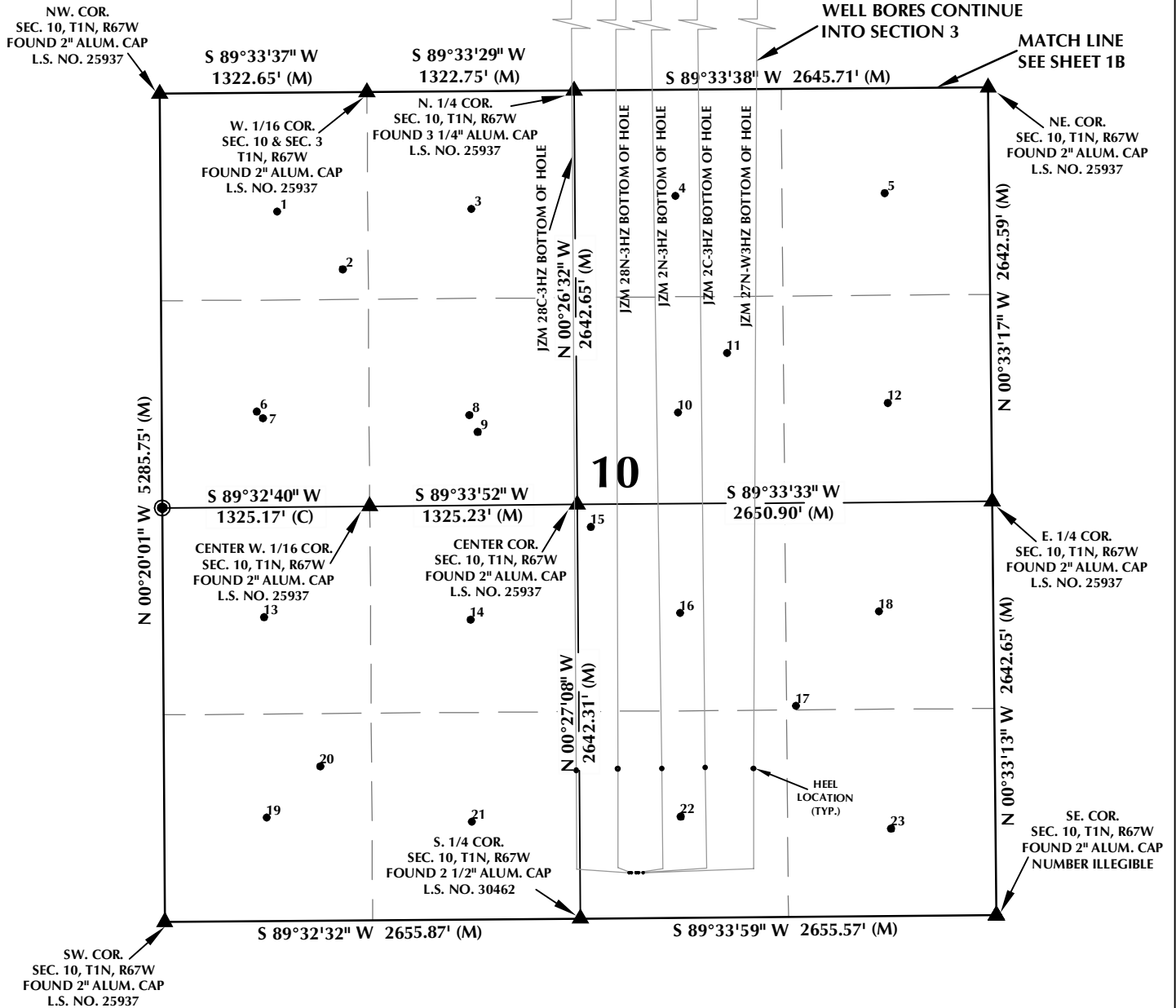


MULTI-WELL PLAN SECTION 10, T1N, R67W



WELL NOTES:

JZM 28C-3HZ

SURFACE: 288' FSL, 2342' FEL
BOTTOM HOLE: 50' FNL, 2577' FEL

JZM 28N-3HZ

SURFACE: 288' FSL, 2327' FEL
BOTTOM HOLE: 85' FNL, 2275' FEL

JZM 2N-3HZ

SURFACE: 288' FSL, 2297' FEL
BOTTOM HOLE: 50' FNL, 2105' FEL

JZM 2C-3HZ

SURFACE: 288' FSL, 2282' FEL
BOTTOM HOLE: 80' FNL, 1792' FEL

JZM 27N-W3HZ

SURFACE: 288' FSL, 2252' FEL
BOTTOM HOLE: 50' FNL, 1338' FEL

NOTES:

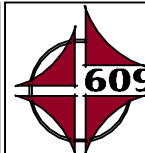
1. INDICATES FOUND SECTION CORNER
2. INDICATES CALCULATED CORNER
3. BASIS OF BEARING DERIVED FROM COLORADO COORDINATE SYSTEM 1983 NORTH ZONE UNLESS OTHERWISE NOTED.
4. ALL MEASURED DISTANCES ARE GRID.
5. COMBINED SCALE FACTOR: .99972303
6. WELL FOOTAGES ARE MEASURED AT RIGHT ANGLES TO THE SECTION LINES.



WELL PAD - JZM 2N-3HZ

MULTI-WELL PLAN
JZM 28C-3HZ,
JZM 28N-3HZ, JZM 2N-3HZ,
JZM 2C-3HZ & JZM 27N-W3HZ
LOCATED IN SECTIONS 3 & 10
T1N, R67W, 6TH P.M.
WELD COUNTY, COLORADO

**Kerr-McGee Oil &
Gas Onshore L.P.**
1099 18th Street
Denver, Colorado 80202



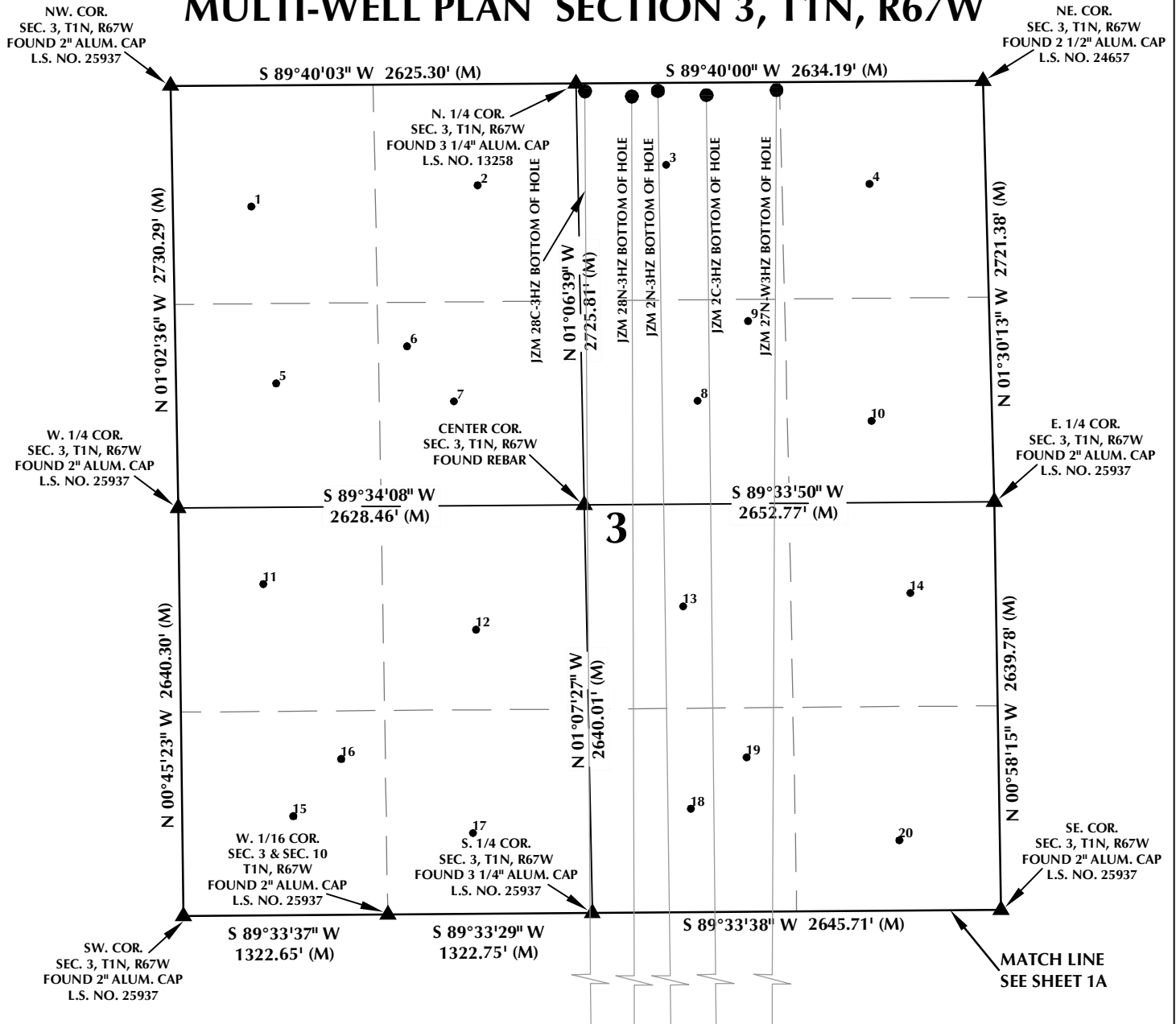
CONSULTING, LLC

SHERIDAN OFFICE
1095 Saberton Avenue
Sheridan, Wyoming 82801
Phone 307-674-0609

LOVELAND OFFICE
1635 Foxtrail Drive, Suite 204
Loveland, Colorado 80538
Phone 970-776-4331

DRAFTED BY:	LMO	CHECKED BY:	BJR	SHEET NO:
DATE DRAFTED:	8/28/15	DATE SURVEYED:	7/15/15	1A
REVISED:		FILE NAME:	13-39	1A OF 2

MULTI-WELL PLAN SECTION 3, T1N, R67W



WELL NOTES:

JZM 28C-3HZ

SURFACE: 288' FSL, 2342' FEL
BOTTOM HOLE: 50' FNL, 2577' FEL

JZM 28N-3HZ

SURFACE: 288' FSL, 2327' FEL
BOTTOM HOLE: 85' FNL, 2275' FEL

JZM 2N-3HZ

SURFACE: 288' FSL, 2297' FEL
BOTTOM HOLE: 50' FNL, 2105' FEL

JZM 2C-3HZ

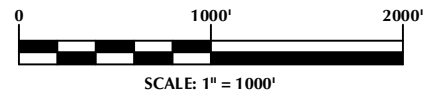
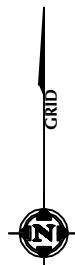
SURFACE: 288' FSL, 2282' FEL
BOTTOM HOLE: 80' FNL, 1792' FEL

JZM 27N-W3HZ

SURFACE: 288' FSL, 2252' FEL
BOTTOM HOLE: 50' FNL, 1338' FEL

NOTES:

1. ▲ INDICATES FOUND SECTION CORNER
2. ● INDICATES CALCULATED CORNER
3. BASIS OF BEARING DERIVED FROM COLORADO COORDINATE SYSTEM 1983 NORTH ZONE UNLESS OTHERWISE NOTED.
4. ALL MEASURED DISTANCES ARE GRID.
5. COMBINED SCALE FACTOR: .99972303
6. WELL FOOTAGES ARE MEASURED AT RIGHT ANGLES TO THE SECTION LINES.



WELL PAD - JZM 2N-3HZ

MULTI-WELL PLAN
JZM 28C-3HZ,
JZM 28N-3HZ, JZM 2N-3HZ,
JZM 2C-3HZ & JZM 27N-W3HZ
LOCATED IN SECTIONS 3 & 10
T1N, R67W, 6TH P.M.
WELD COUNTY, COLORADO

**Kerr-McGee Oil &
Gas Onshore L.P.**

1099 18th Street
Denver, Colorado 80202



CONSULTING, LLC

SHERIDAN OFFICE
1095 Saberton Avenue
Sheridan, Wyoming 82801
Phone 307-674-0609

LOVELAND OFFICE
1635 Foxtrail Drive, Suite 204
Loveland, Colorado 80538
Phone 970-776-4331

DRAFTED BY:	LMO	CHECKED BY:	BJR	SHEET NO:
DATE DRAFTED:	8/28/15	DATE SURVEYED:	7/15/15	1B
REVISED:		FILE NAME:	13-39	1B OF 2

MULTI-WELL PLAN

SECTION 10, T1N, R67W

NUMBER	WELL NAME	API NUMBER	LATITUDE (NAD 83)	LONGITUDE (NAD 83)	SURFACE ELEVATION	TOTAL DEPTH
1	*SUCKLA-BROWN UNIT 11	05-123-08872	40.070698	-104.883642	5003.0	4850
2	*SUCKLA FARMS INC UNIT F 2	05-123-09838	40.069680	-104.882150	5016.0	8259
3	*SUCKLA-BROWN UNIT 2	05-123-07483	40.070728	-104.879212	5020.0	4850
4	SUCKLA-BROWN UNIT 12	05-123-08873	40.070930	-104.874554	5041.5	4883
5	SUCKLA-BROWN UNIT 1	05-123-07480	40.070952	-104.869777	5049.3	4890
6	*SUCKLA-BROWN UNIT 3	05-123-07472	40.067200	-104.884140	5026.0	4890
7	*ROBERT J BROWN 1	05-123-07466	40.067078	-104.884002	5026.0	4895
8	*SUCKLA BROWN UNIT 9	05-123-08069	40.067108	-104.879292	5042.0	4919
9	*SUCKLA FARMS INJ WELL(EPA) 1	05-123-14291	40.066810	-104.879100	5046.0	9571
10	*SUCKLA BROWN UNIT 4	05-123-07481	40.067138	-104.874522	5081.0	4945
11	SUCKLA FARMS INC F UNIT 1	05-123-07842	40.068168	-104.873375	5082.5	8306
12	SUCKLA-BROWN UNIT 13	05-123-08874	40.067274	-104.869735	5048.8	4916
13	*SUCKLA-BROWN UNIT 14	05-123-08875	40.063598	-104.884012	5047.0	4929
14	*SUCKLA BROWN UNIT 6	05-123-07426	40.063528	-104.879292	5065.0	4910
15	SUCKLA-BROWN UNIT 17	05-123-09485	40.065133	-104.876503	5079.5	5074
16	*SUCKLA BROWN UNIT 10	05-123-08070	40.063618	-104.874512	5054.0	4989
17	FRANK J. SUCKLA 2	05-123-09988	40.061978	-104.871884	5039.1	8260
18	*SUCKLA-BROWN UNIT 5	05-123-07482	40.063628	-104.869972	5030.0	4870
19	SUCKLA-BROWN UNIT NAV 7	05-123-07485	40.060085	-104.883977	5062.2	4860
20	FRANK J SUCKLA 1	05-123-07214	40.060975	-104.882745	5069.0	8259
21	*SUCKLA-BROWN UNIT 15	05-123-08876	40.059988	-104.879302	5046.0	4955
22	SUCKLA-BROWN UNIT 8	05-123-07484	40.060050	-104.874527	5055.6	4899
23	SUCKLA-BROWN UNIT 16	05-123-08877	40.059812	-104.869730	5037.4	4930

NOTES:

- * INDICATES EXISTING WELLS THAT WERE NOT SURVEYED BUT DERIVED FROM COLORADO OIL AND GAS CONSERVATION COMMISSION (COGCC).

**EXISTING WELL EXHIBIT
SECTION 10, T1N, R67W, 6TH P.M.
WELD COUNTY, COLORADO**

**Kerr-McGee Oil &
Gas Onshore L.P.**
1099 18th Street
Denver, Colorado 80202



CONSULTING, LLC

SHERIDAN OFFICE
1095 Saberton Avenue
Sheridan, Wyoming 82801
Phone 307-674-0609

LOVELAND OFFICE
1635 Foxtrail Drive, Suite 204
Loveland, Colorado 80538
Phone 970-776-4331

DRAFTED BY:	LMO	CHECKED BY:	BJR	SHEET NO: 2A 2A OF 2
DATE DRAFTED:	8/13/15	DATE SURVEYED:	7/15/15	
REVISED:		FILE NAME:	13-39	

MULTI-WELL PLAN SECTION 3, T1N, R67W

NUMBER	WELL NAME	API NUMBER	LATITUDE (NAD 83)	LONGITUDE (NAD 83)	SURFACE ELEVATION	TOTAL DEPTH
1	AUGUST GITTLEIN 2	05-123-08788	40.085369	-104.884617	4983.8	4900
2	AUGUST GITTLEIN 1	05-123-07474	40.085718	-104.879381	4963.7	4788
3	JACK BERGER 3	05-123-08825	40.086058	-104.875015	4956.5	4831
4	JACK BERGER 2	05-123-07538	40.085694	-104.870316	4949.5	4810
5	ELTON N MILLER 1	05-123-07475	40.082226	-104.884071	4971.3	4815
6	UPRR 42 PAN AM UNIT J 2	05-123-10201	40.082866	-104.881039	4967.8	8200
7	ELTON N MILLER 2	05-123-08827	40.081884	-104.879960	4966.6	4819
8	JACK BERGER 1	05-123-07473	40.081866	-104.874326	4956.9	4800
9	JACK BERGER C 1	05-123-08601	40.083272	-104.873146	4954.2	8175
10	JACK BERGER 4	05-123-08826	40.081487	-104.870309	4965.9	4809
11	UPRR 42 PAN AM E 6	05-123-08789	40.078667	-104.884403	4964.7	4805
12	UPRR 42 PAN AM E 2	05-123-07527	40.077829	-104.879488	4980.5	4810
13	*G G HOLLISTER 33-3 1	05-123-08820	40.078216	-104.874693	4991.0	4890
14	*ALEX H MILLER 1-43-3	05-123-07501	40.078428	-104.869432	4997.0	4840
15	*UPRR 42 PAN AM E 1	05-123-07499	40.074538	-104.883742	4990.0	4844
16	*UPRR 42 PAN AM UNIT J 1	05-123-07737	40.075550	-104.882630	4982.0	8224
17	UPRR 42 PAN AM E 5	05-123-08868	40.074222	-104.879593	5003.4	4866
18	UPRR 42 PAN AM E 3	05-123-07528	40.074625	-104.874548	5028.0	4870
19	JACK BERGER GU "C" 2	05-123-10039	40.075528	-104.873248	5017.9	8250
20	UPRR 42 PAN AM E 4	05-123-08996	40.074037	-104.869735	5019.1	4910

NOTES:

- * INDICATES EXISTING WELLS THAT WERE NOT SURVEYED BUT DERIVED FROM COLORADO OIL AND GAS CONSERVATION COMMISSION (COGCC).

**EXISTING WELL EXHIBIT
SECTION 3, T1N, R67W, 6TH P.M.
WELD COUNTY, COLORADO**

**Kerr-McGee Oil &
Gas Onshore L.P.**
1099 18th Street
Denver, Colorado 80202



CONSULTING, LLC

SHERIDAN OFFICE
1095 Saberton Avenue
Sheridan, Wyoming 82801
Phone 307-674-0609

LOVELAND OFFICE
1635 Foxtrail Drive, Suite 204
Loveland, Colorado 80538
Phone 970-776-4331

DRAFTED BY:	LMO	CHECKED BY:	BJR	2B 2B OF 2
DATE DRAFTED:	8/13/15	DATE SURVEYED:	7/15/15	
REVISED:		FILE NAME:	13-39	