

# **US ROCKIES WATTENBERG PLANNING**

**WELD-NAD83-UTMFT13N  
1N-67W-10 JZM 15-10HZ Pad  
JZM 28C-3HZ**

**Plan A**

**Plan: Permit Rev-1**

## **Standard Planning Report**

**19 August, 2015**

Project: WELD-NAD83-UTMFT13N  
 Site: 1N-67W-10 JZM 15-10HZ Pad  
 Well: JZM 28C-3HZ  
 Wellbore: Plan A  
 Design: Permit Rev-1

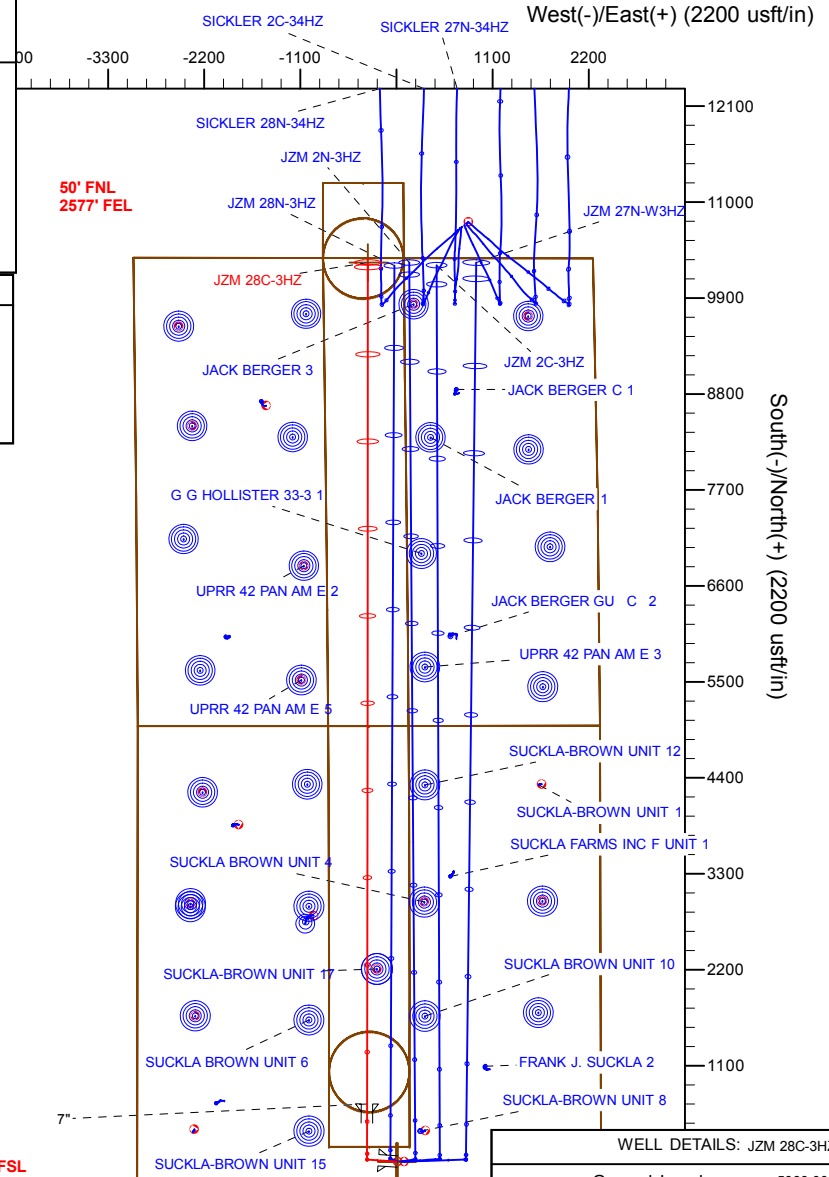
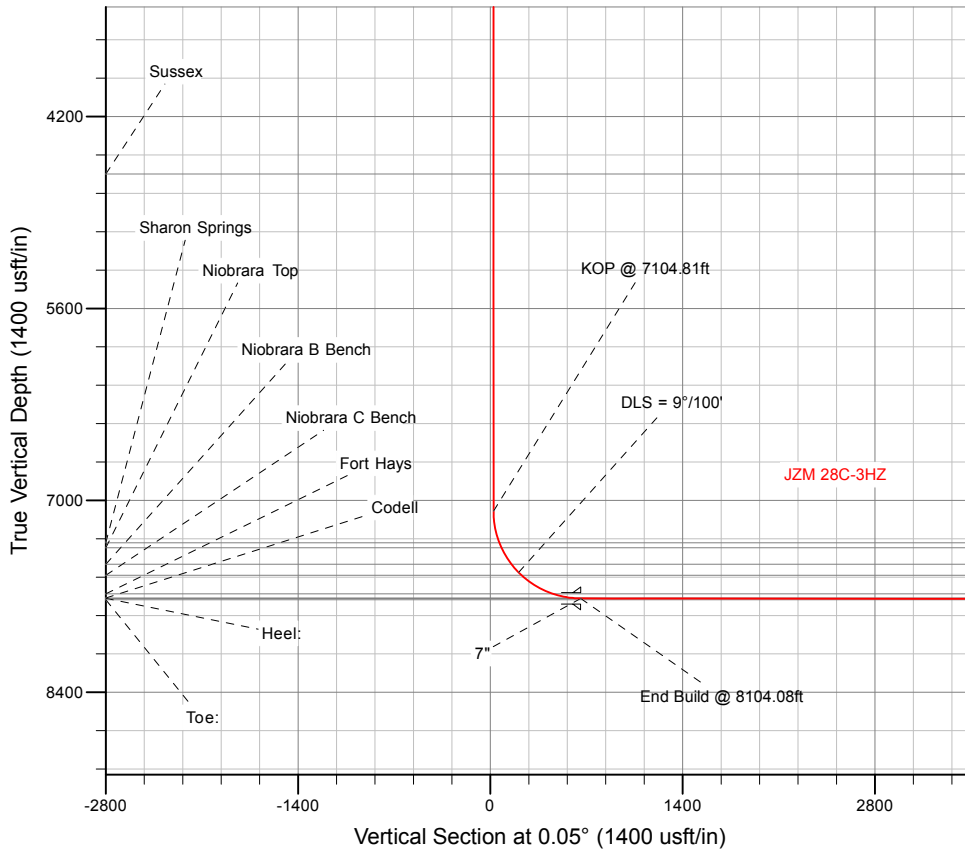
# US ROCKIES WATTENBERG PLANNING

## SECTION DETAILS

Sec	MD	Inc	Azi	TVD	+N/-S	+E/-W	Dleg	TFace	VSect	Target
1	0.00	0.00	0.00	0.00	0.00	0.00	0.00	0.00	0.00	
2	300.00	0.00	0.00	300.00	0.00	0.00	0.00	0.00	0.00	
3	966.67	10.00	274.00	963.29	4.05	-57.89	1.50	274.00	4.00	
4	2316.67	10.00	274.00	2292.78	20.40	-291.74	0.00	0.00	20.15	
5	2816.67	0.00	0.00	2790.24	23.44	-335.16	2.00	180.00	23.14	
6	7104.81	0.00	0.00	7078.38	23.44	-335.16	0.00	0.00	23.14	
7	8104.08	89.93	0.05	7715.00	659.33	-334.60	9.00	0.05	659.04	
8	17752.63	89.93	0.05	7726.00	10307.87	-326.13	0.00	0.00	10307.58	JZM 28C-3HZ_BHL

## WELLBORE TARGET DETAILS (LAT/LONG)

Name	TVD	+N/-S	+E/-W	Latitude	Longitude	Shape
JZM 28C-3HZ_SHL	0.00	0.00	0.00	40.059069	-104.875714	Point
JZM 28C-3HZ_BHL	7726.00	10307.87	-326.13	40.087376	-104.876880	Point



## WELL DETAILS: JZM 28C-3HZ

Ground Level: 5063.00

RKB = 17' @ 5080.00usft (D Rig)

Plan: Permit Rev-1 (JZM 28C-3HZ/Plan A)

Created By: Clint Eshelman Date: 8/19/2015  
 Reviewed: \_\_\_\_\_ Date: \_\_\_\_\_

# Anadarko

## Planning Report

<b>Database:</b>	PLANNING	<b>Local Co-ordinate Reference:</b>	Well JZM 28C-3HZ
<b>Company:</b>	US ROCKIES WATTENBERG PLANNING	<b>TVD Reference:</b>	RKB = 17' @ 5080.00usft (D Rig)
<b>Project:</b>	WELD-NAD83-UTMFT13N	<b>MD Reference:</b>	RKB = 17' @ 5080.00usft (D Rig)
<b>Site:</b>	1N-67W-10 JZM 15-10HZ Pad	<b>North Reference:</b>	True
<b>Well:</b>	JZM 28C-3HZ	<b>Survey Calculation Method:</b>	Minimum Curvature
<b>Wellbore:</b>	Plan A		
<b>Design:</b>	Permit Rev-1		

<b>Project</b> WELD-NAD83-UTMFT13N			
<b>Map System:</b>	Universal Transverse Mercator (US Survey Feet)	<b>System Datum:</b>	Mean Sea Level
<b>Geo Datum:</b>	North American Datum 1983		
<b>Map Zone:</b>	Zone 13N (108 W to 102 W)		

<b>Site</b> 1N-67W-10 JZM 15-10HZ Pad			
<b>Site Position:</b>		<b>Northing:</b>	14,548,267.26 usft
<b>From:</b>	Lat/Long	<b>Easting:</b>	1,675,193.07 usft
<b>Position Uncertainty:</b>	0.00 usft	<b>Slot Radius:</b>	13-3/16 "
		<b>Latitude:</b>	40.059069
		<b>Longitude:</b>	-104.875714
		<b>Grid Convergence:</b>	0.08 °

<b>Well</b> JZM 28C-3HZ			
<b>Well Position</b>	<b>+N-S</b>	0.00 usft	<b>Northing:</b> 14,548,267.26 usft
	<b>+E-W</b>	0.00 usft	<b>Easting:</b> 1,675,193.07 usft
<b>Position Uncertainty</b>		3.28 usft	<b>Wellhead Elevation:</b> 0.00 usft
			<b>Latitude:</b> 40.059069
			<b>Longitude:</b> -104.875714
			<b>Ground Level:</b> 5,063.00 usft

<b>Wellbore</b> Plan A					
<b>Magnetics</b>	<b>Model Name</b>	<b>Sample Date</b>	<b>Declination (°)</b>	<b>Dip Angle (°)</b>	<b>Field Strength (nT)</b>
	IGRF2010	8/18/2015	8.33	66.61	52,499

<b>Design</b> Permit Rev-1				
<b>Audit Notes:</b>				
<b>Version:</b>	<b>Phase:</b>	PROTOTYPE	<b>Tie On Depth:</b>	0.00
<b>Vertical Section:</b>	<b>Depth From (TVD) (usft)</b>	<b>+N/-S (usft)</b>	<b>+E/-W (usft)</b>	<b>Direction (°)</b>
	0.00	0.00	0.00	0.05

<b>Plan Sections</b>										
Measured Depth (usft)	Inclination (°)	Azimuth (°)	Vertical Depth (usft)	+N/-S (usft)	+E/-W (usft)	Dogleg Rate (°/100usft)	Build Rate (°/100usft)	Turn Rate (°/100usft)	TFO (°)	Target
0.00	0.00	0.00	0.00	0.00	0.00	0.00	0.00	0.00	0.00	
300.00	0.00	0.00	300.00	0.00	0.00	0.00	0.00	0.00	0.00	
966.67	10.00	274.00	963.29	4.05	-57.89	1.50	1.50	0.00	274.00	
2,316.67	10.00	274.00	2,292.78	20.40	-291.74	0.00	0.00	0.00	0.00	
2,816.67	0.00	0.00	2,790.24	23.44	-335.16	2.00	-2.00	0.00	180.00	
7,104.81	0.00	0.00	7,078.38	23.44	-335.16	0.00	0.00	0.00	0.00	
8,104.08	89.93	0.05	7,715.00	659.33	-334.60	9.00	9.00	0.01	0.05	
17,752.63	89.93	0.05	7,726.00	10,307.87	-326.13	0.00	0.00	0.00	0.00	JZM 28C-3HZ_BHL

# Anadarko

## Planning Report

<b>Database:</b>	PLANNING	<b>Local Co-ordinate Reference:</b>	Well JZM 28C-3HZ
<b>Company:</b>	US ROCKIES WATTENBERG PLANNING	<b>TVD Reference:</b>	RKB = 17' @ 5080.00usft (D Rig)
<b>Project:</b>	WELD-NAD83-UTMFT13N	<b>MD Reference:</b>	RKB = 17' @ 5080.00usft (D Rig)
<b>Site:</b>	1N-67W-10 JZM 15-10HZ Pad	<b>North Reference:</b>	True
<b>Well:</b>	JZM 28C-3HZ	<b>Survey Calculation Method:</b>	Minimum Curvature
<b>Wellbore:</b>	Plan A		
<b>Design:</b>	Permit Rev-1		

Planned Survey										
Measured Depth (usft)	Inclination (°)	Azimuth (°)	Vertical Depth (usft)	+N/-S (usft)	+E/-W (usft)	Vertical Section (usft)	Dogleg Rate (°/100usft)	Build Rate (°/100usft)	Turn Rate (°/100usft)	
0.00	0.00	0.00	0.00	0.00	0.00	0.00	0.00	0.00	0.00	0.00
100.00	0.00	0.00	100.00	0.00	0.00	0.00	0.00	0.00	0.00	0.00
200.00	0.00	0.00	200.00	0.00	0.00	0.00	0.00	0.00	0.00	0.00
300.00	0.00	0.00	300.00	0.00	0.00	0.00	0.00	0.00	0.00	0.00
<b>Begin Nudge @ 300.00ft</b>										
400.00	1.50	274.00	399.99	0.09	-1.31	0.09	1.50	1.50	1.50	0.00
500.00	3.00	274.00	499.91	0.37	-5.22	0.36	1.50	1.50	1.50	0.00
600.00	4.50	274.00	599.69	0.82	-11.75	0.81	1.50	1.50	1.50	0.00
700.00	6.00	274.00	699.27	1.46	-20.87	1.44	1.50	1.50	1.50	0.00
800.00	7.50	274.00	798.57	2.28	-32.60	2.25	1.50	1.50	1.50	0.00
900.00	9.00	274.00	897.54	3.28	-46.91	3.24	1.50	1.50	1.50	0.00
966.67	10.00	274.00	963.29	4.05	-57.89	4.00	1.50	1.50	1.50	0.00
<b>End Nudge @ 966.67ft</b>										
1,000.00	10.00	274.00	996.11	4.45	-63.66	4.40	0.00	0.00	0.00	0.00
1,100.00	10.00	274.00	1,094.59	5.66	-80.99	5.59	0.00	0.00	0.00	0.00
1,200.00	10.00	274.00	1,193.08	6.87	-98.31	6.79	0.00	0.00	0.00	0.00
1,300.00	10.00	274.00	1,291.56	8.09	-115.63	7.98	0.00	0.00	0.00	0.00
1,382.70	10.00	274.00	1,373.00	9.09	-129.96	8.97	0.00	0.00	0.00	0.00
<b>Fox Hills</b>										
1,400.00	10.00	274.00	1,390.04	9.30	-132.95	9.18	0.00	0.00	0.00	0.00
1,500.00	10.00	274.00	1,488.52	10.51	-150.28	10.38	0.00	0.00	0.00	0.00
1,600.00	10.00	274.00	1,587.00	11.72	-167.60	11.57	0.00	0.00	0.00	0.00
1,700.00	10.00	274.00	1,685.48	12.93	-184.92	12.77	0.00	0.00	0.00	0.00
1,800.00	10.00	274.00	1,783.96	14.14	-202.24	13.97	0.00	0.00	0.00	0.00
1,816.29	10.00	274.00	1,800.00	14.34	-205.06	14.16	0.00	0.00	0.00	0.00
<b>9 5/8"</b>										
1,900.00	10.00	274.00	1,882.44	15.35	-219.57	15.16	0.00	0.00	0.00	0.00
2,000.00	10.00	274.00	1,980.92	16.56	-236.89	16.36	0.00	0.00	0.00	0.00
2,100.00	10.00	274.00	2,079.40	17.78	-254.21	17.55	0.00	0.00	0.00	0.00
2,200.00	10.00	274.00	2,177.88	18.99	-271.53	18.75	0.00	0.00	0.00	0.00
2,300.00	10.00	274.00	2,276.36	20.20	-288.86	19.95	0.00	0.00	0.00	0.00
2,316.67	10.00	274.00	2,292.78	20.40	-291.74	20.15	0.00	0.00	0.00	0.00
<b>Begin Drop @ 2316.67ft</b>										
2,400.00	8.33	274.00	2,375.04	21.33	-304.99	21.06	2.00	-2.00	0.00	0.00
2,500.00	6.33	274.00	2,474.22	22.22	-317.72	21.94	2.00	-2.00	0.00	0.00
2,600.00	4.33	274.00	2,573.78	22.87	-326.99	22.58	2.00	-2.00	0.00	0.00
2,700.00	2.33	274.00	2,673.61	23.27	-332.79	22.98	2.00	-2.00	0.00	0.00
2,800.00	0.33	274.00	2,773.58	23.43	-335.11	23.14	2.00	-2.00	0.00	0.00
2,816.67	0.00	0.00	2,790.25	23.44	-335.16	23.14	2.00	-2.00	0.00	0.00
<b>End Drop @ 2816.67ft</b>										
2,900.00	0.00	0.00	2,873.58	23.44	-335.16	23.14	0.00	0.00	0.00	0.00
3,000.00	0.00	0.00	2,973.58	23.44	-335.16	23.14	0.00	0.00	0.00	0.00
3,100.00	0.00	0.00	3,073.58	23.44	-335.16	23.14	0.00	0.00	0.00	0.00
3,200.00	0.00	0.00	3,173.58	23.44	-335.16	23.14	0.00	0.00	0.00	0.00
3,300.00	0.00	0.00	3,273.58	23.44	-335.16	23.14	0.00	0.00	0.00	0.00
3,400.00	0.00	0.00	3,373.58	23.44	-335.16	23.14	0.00	0.00	0.00	0.00
3,500.00	0.00	0.00	3,473.58	23.44	-335.16	23.14	0.00	0.00	0.00	0.00
3,600.00	0.00	0.00	3,573.58	23.44	-335.16	23.14	0.00	0.00	0.00	0.00
3,700.00	0.00	0.00	3,673.58	23.44	-335.16	23.14	0.00	0.00	0.00	0.00
3,800.00	0.00	0.00	3,773.58	23.44	-335.16	23.14	0.00	0.00	0.00	0.00
3,900.00	0.00	0.00	3,873.58	23.44	-335.16	23.14	0.00	0.00	0.00	0.00
4,000.00	0.00	0.00	3,973.58	23.44	-335.16	23.14	0.00	0.00	0.00	0.00
4,100.00	0.00	0.00	4,073.58	23.44	-335.16	23.14	0.00	0.00	0.00	0.00

# Anadarko

## Planning Report

<b>Database:</b>	PLANNING	<b>Local Co-ordinate Reference:</b>	Well JZM 28C-3HZ
<b>Company:</b>	US ROCKIES WATTENBERG PLANNING	<b>TVD Reference:</b>	RKB = 17' @ 5080.00usft (D Rig)
<b>Project:</b>	WELD-NAD83-UTMFT13N	<b>MD Reference:</b>	RKB = 17' @ 5080.00usft (D Rig)
<b>Site:</b>	1N-67W-10 JZM 15-10HZ Pad	<b>North Reference:</b>	True
<b>Well:</b>	JZM 28C-3HZ	<b>Survey Calculation Method:</b>	Minimum Curvature
<b>Wellbore:</b>	Plan A		
<b>Design:</b>	Permit Rev-1		

Planned Survey									
Measured Depth (usft)	Inclination (°)	Azimuth (°)	Vertical Depth (usft)	+N/-S (usft)	+E/-W (usft)	Vertical Section (usft)	Dogleg Rate (°/100usft)	Build Rate (°/100usft)	Turn Rate (°/100usft)
4,200.00	0.00	0.00	4,173.58	23.44	-335.16	23.14	0.00	0.00	0.00
4,300.00	0.00	0.00	4,273.58	23.44	-335.16	23.14	0.00	0.00	0.00
4,400.00	0.00	0.00	4,373.58	23.44	-335.16	23.14	0.00	0.00	0.00
4,500.00	0.00	0.00	4,473.58	23.44	-335.16	23.14	0.00	0.00	0.00
4,600.00	0.00	0.00	4,573.58	23.44	-335.16	23.14	0.00	0.00	0.00
4,645.42	0.00	0.00	4,619.00	23.44	-335.16	23.14	0.00	0.00	0.00
<b>Sussex</b>									
4,700.00	0.00	0.00	4,673.58	23.44	-335.16	23.14	0.00	0.00	0.00
4,800.00	0.00	0.00	4,773.58	23.44	-335.16	23.14	0.00	0.00	0.00
4,900.00	0.00	0.00	4,873.58	23.44	-335.16	23.14	0.00	0.00	0.00
5,000.00	0.00	0.00	4,973.58	23.44	-335.16	23.14	0.00	0.00	0.00
5,100.00	0.00	0.00	5,073.58	23.44	-335.16	23.14	0.00	0.00	0.00
5,200.00	0.00	0.00	5,173.58	23.44	-335.16	23.14	0.00	0.00	0.00
5,300.00	0.00	0.00	5,273.58	23.44	-335.16	23.14	0.00	0.00	0.00
5,400.00	0.00	0.00	5,373.58	23.44	-335.16	23.14	0.00	0.00	0.00
5,500.00	0.00	0.00	5,473.58	23.44	-335.16	23.14	0.00	0.00	0.00
5,600.00	0.00	0.00	5,573.58	23.44	-335.16	23.14	0.00	0.00	0.00
5,700.00	0.00	0.00	5,673.58	23.44	-335.16	23.14	0.00	0.00	0.00
5,800.00	0.00	0.00	5,773.58	23.44	-335.16	23.14	0.00	0.00	0.00
5,900.00	0.00	0.00	5,873.58	23.44	-335.16	23.14	0.00	0.00	0.00
6,000.00	0.00	0.00	5,973.58	23.44	-335.16	23.14	0.00	0.00	0.00
6,100.00	0.00	0.00	6,073.58	23.44	-335.16	23.14	0.00	0.00	0.00
6,200.00	0.00	0.00	6,173.58	23.44	-335.16	23.14	0.00	0.00	0.00
6,300.00	0.00	0.00	6,273.58	23.44	-335.16	23.14	0.00	0.00	0.00
6,400.00	0.00	0.00	6,373.58	23.44	-335.16	23.14	0.00	0.00	0.00
6,500.00	0.00	0.00	6,473.58	23.44	-335.16	23.14	0.00	0.00	0.00
6,600.00	0.00	0.00	6,573.58	23.44	-335.16	23.14	0.00	0.00	0.00
6,700.00	0.00	0.00	6,673.58	23.44	-335.16	23.14	0.00	0.00	0.00
6,800.00	0.00	0.00	6,773.58	23.44	-335.16	23.14	0.00	0.00	0.00
6,900.00	0.00	0.00	6,873.58	23.44	-335.16	23.14	0.00	0.00	0.00
7,000.00	0.00	0.00	6,973.58	23.44	-335.16	23.14	0.00	0.00	0.00
7,100.00	0.00	0.00	7,073.58	23.44	-335.16	23.14	0.00	0.00	0.00
7,104.81	0.00	0.00	7,078.39	23.44	-335.16	23.14	0.00	0.00	0.00
<b>KOP @ 7104.81ft</b>									
7,200.00	8.57	0.05	7,173.22	30.54	-335.15	30.25	9.00	9.00	0.00
7,300.00	17.57	0.05	7,270.53	53.13	-335.13	52.83	9.00	9.00	0.00
7,341.37	21.29	0.05	7,309.54	66.89	-335.12	66.59	9.00	9.00	0.00
<b>Sharon Springs</b>									
7,381.60	24.91	0.05	7,346.54	82.67	-335.11	82.38	9.00	9.00	0.00
<b>Niobrara Top</b>									
7,400.00	26.57	0.05	7,363.11	90.66	-335.10	90.37	9.00	9.00	0.00
7,500.00	35.57	0.05	7,448.68	142.21	-335.05	141.92	9.00	9.00	0.00
7,522.07	37.55	0.05	7,466.40	155.35	-335.04	155.06	9.00	9.00	0.00
<b>Niobrara B Bench</b>									
7,600.00	44.57	0.05	7,525.13	206.51	-335.00	206.22	9.00	9.00	0.00
<b>DLS = 9°/100'</b>									
7,631.10	47.37	0.05	7,546.74	228.87	-334.98	228.58	9.00	9.00	0.00
<b>Niobrara C Bench</b>									
7,700.00	53.57	0.05	7,590.58	281.98	-334.93	281.69	9.00	9.00	0.00
7,800.00	62.57	0.05	7,643.42	366.76	-334.86	366.47	9.00	9.00	0.00
7,898.11	71.40	0.05	7,681.74	456.98	-334.78	456.68	9.00	9.00	0.00
<b>Fort Hays</b>									
7,900.00	71.57	0.05	7,682.34	458.76	-334.78	458.47	9.00	9.00	0.00

# Anadarko

## Planning Report

<b>Database:</b>	PLANNING	<b>Local Co-ordinate Reference:</b>	Well JZM 28C-3HZ
<b>Company:</b>	US ROCKIES WATTENBERG PLANNING	<b>TVD Reference:</b>	RKB = 17' @ 5080.00usft (D Rig)
<b>Project:</b>	WELD-NAD83-UTMFT13N	<b>MD Reference:</b>	RKB = 17' @ 5080.00usft (D Rig)
<b>Site:</b>	1N-67W-10 JZM 15-10HZ Pad	<b>North Reference:</b>	True
<b>Well:</b>	JZM 28C-3HZ	<b>Survey Calculation Method:</b>	Minimum Curvature
<b>Wellbore:</b>	Plan A		
<b>Design:</b>	Permit Rev-1		

Planned Survey										
Measured Depth (usft)	Inclination (°)	Azimuth (°)	Vertical Depth (usft)	+N/-S (usft)	+E/-W (usft)	Vertical Section (usft)	Dogleg Rate (°/100usft)	Build Rate (°/100usft)	Turn Rate (°/100usft)	
8,000.00	80.57	0.05	7,706.40	555.72	-334.69	555.43	9.00	9.00	0.00	
8,056.86	85.69	0.05	7,713.20	612.16	-334.64	611.87	9.00	9.00	0.00	
<b>Codell</b>										
8,100.00	89.57	0.05	7,714.98	655.25	-334.60	654.96	9.00	9.00	0.00	
8,104.08	89.93	0.05	7,715.00	659.33	-334.60	659.04	9.00	9.00	0.00	
<b>End Build @ 8104.08ft - Heel: - 7"</b>										
8,200.00	89.93	0.05	7,715.11	755.25	-334.52	754.96	0.00	0.00	0.00	
8,300.00	89.93	0.05	7,715.23	855.25	-334.43	854.96	0.00	0.00	0.00	
8,400.00	89.93	0.05	7,715.34	955.25	-334.34	954.96	0.00	0.00	0.00	
8,500.00	89.93	0.05	7,715.45	1,055.25	-334.25	1,054.96	0.00	0.00	0.00	
8,600.00	89.93	0.05	7,715.57	1,155.25	-334.17	1,154.96	0.00	0.00	0.00	
8,700.00	89.93	0.05	7,715.68	1,255.25	-334.08	1,254.96	0.00	0.00	0.00	
8,800.00	89.93	0.05	7,715.80	1,355.25	-333.99	1,354.96	0.00	0.00	0.00	
8,900.00	89.93	0.05	7,715.91	1,455.25	-333.90	1,454.96	0.00	0.00	0.00	
9,000.00	89.93	0.05	7,716.02	1,555.25	-333.81	1,554.96	0.00	0.00	0.00	
9,100.00	89.93	0.05	7,716.14	1,655.25	-333.73	1,654.96	0.00	0.00	0.00	
9,200.00	89.93	0.05	7,716.25	1,755.25	-333.64	1,754.96	0.00	0.00	0.00	
9,300.00	89.93	0.05	7,716.37	1,855.25	-333.55	1,854.96	0.00	0.00	0.00	
9,400.00	89.93	0.05	7,716.48	1,955.25	-333.46	1,954.96	0.00	0.00	0.00	
9,500.00	89.93	0.05	7,716.59	2,055.25	-333.37	2,054.96	0.00	0.00	0.00	
9,600.00	89.93	0.05	7,716.71	2,155.25	-333.29	2,154.96	0.00	0.00	0.00	
9,700.00	89.93	0.05	7,716.82	2,255.25	-333.20	2,254.96	0.00	0.00	0.00	
9,800.00	89.93	0.05	7,716.94	2,355.25	-333.11	2,354.96	0.00	0.00	0.00	
9,900.00	89.93	0.05	7,717.05	2,455.25	-333.02	2,454.96	0.00	0.00	0.00	
10,000.00	89.93	0.05	7,717.16	2,555.25	-332.94	2,554.96	0.00	0.00	0.00	
10,100.00	89.93	0.05	7,717.28	2,655.25	-332.85	2,654.96	0.00	0.00	0.00	
10,200.00	89.93	0.05	7,717.39	2,755.25	-332.76	2,754.96	0.00	0.00	0.00	
10,300.00	89.93	0.05	7,717.51	2,855.25	-332.67	2,854.96	0.00	0.00	0.00	
10,400.00	89.93	0.05	7,717.62	2,955.25	-332.58	2,954.96	0.00	0.00	0.00	
10,500.00	89.93	0.05	7,717.73	3,055.25	-332.50	3,054.96	0.00	0.00	0.00	
10,600.00	89.93	0.05	7,717.85	3,155.25	-332.41	3,154.96	0.00	0.00	0.00	
10,700.00	89.93	0.05	7,717.96	3,255.25	-332.32	3,254.96	0.00	0.00	0.00	
10,800.00	89.93	0.05	7,718.08	3,355.25	-332.23	3,354.96	0.00	0.00	0.00	
10,900.00	89.93	0.05	7,718.19	3,455.25	-332.15	3,454.96	0.00	0.00	0.00	
11,000.00	89.93	0.05	7,718.30	3,555.25	-332.06	3,554.96	0.00	0.00	0.00	
11,100.00	89.93	0.05	7,718.42	3,655.25	-331.97	3,654.96	0.00	0.00	0.00	
11,200.00	89.93	0.05	7,718.53	3,755.25	-331.88	3,754.96	0.00	0.00	0.00	
11,300.00	89.93	0.05	7,718.65	3,855.25	-331.79	3,854.96	0.00	0.00	0.00	
11,400.00	89.93	0.05	7,718.76	3,955.25	-331.71	3,954.96	0.00	0.00	0.00	
11,500.00	89.93	0.05	7,718.87	4,055.25	-331.62	4,054.96	0.00	0.00	0.00	
11,600.00	89.93	0.05	7,718.99	4,155.25	-331.53	4,154.96	0.00	0.00	0.00	
11,700.00	89.93	0.05	7,719.10	4,255.25	-331.44	4,254.95	0.00	0.00	0.00	
11,800.00	89.93	0.05	7,719.22	4,355.25	-331.35	4,354.95	0.00	0.00	0.00	
11,900.00	89.93	0.05	7,719.33	4,455.25	-331.27	4,454.95	0.00	0.00	0.00	
12,000.00	89.93	0.05	7,719.44	4,555.25	-331.18	4,554.95	0.00	0.00	0.00	
12,100.00	89.93	0.05	7,719.56	4,655.25	-331.09	4,654.95	0.00	0.00	0.00	
12,200.00	89.93	0.05	7,719.67	4,755.25	-331.00	4,754.95	0.00	0.00	0.00	
12,300.00	89.93	0.05	7,719.79	4,855.25	-330.92	4,854.95	0.00	0.00	0.00	
12,400.00	89.93	0.05	7,719.90	4,955.25	-330.83	4,954.95	0.00	0.00	0.00	
12,500.00	89.93	0.05	7,720.01	5,055.25	-330.74	5,054.95	0.00	0.00	0.00	
12,600.00	89.93	0.05	7,720.13	5,155.24	-330.65	5,154.95	0.00	0.00	0.00	
12,700.00	89.93	0.05	7,720.24	5,255.24	-330.56	5,254.95	0.00	0.00	0.00	
12,800.00	89.93	0.05	7,720.36	5,355.24	-330.48	5,354.95	0.00	0.00	0.00	
12,900.00	89.93	0.05	7,720.47	5,455.24	-330.39	5,454.95	0.00	0.00	0.00	

# Anadarko

## Planning Report

<b>Database:</b>	PLANNING	<b>Local Co-ordinate Reference:</b>	Well JZM 28C-3HZ
<b>Company:</b>	US ROCKIES WATTENBERG PLANNING	<b>TVD Reference:</b>	RKB = 17' @ 5080.00usft (D Rig)
<b>Project:</b>	WELD-NAD83-UTMFT13N	<b>MD Reference:</b>	RKB = 17' @ 5080.00usft (D Rig)
<b>Site:</b>	1N-67W-10 JZM 15-10HZ Pad	<b>North Reference:</b>	True
<b>Well:</b>	JZM 28C-3HZ	<b>Survey Calculation Method:</b>	Minimum Curvature
<b>Wellbore:</b>	Plan A		
<b>Design:</b>	Permit Rev-1		

Planned Survey									
Measured Depth (usft)	Inclination (°)	Azimuth (°)	Vertical Depth (usft)	+N/-S (usft)	+E/-W (usft)	Vertical Section (usft)	Dogleg Rate (°/100usft)	Build Rate (°/100usft)	Turn Rate (°/100usft)
13,000.00	89.93	0.05	7,720.58	5,555.24	-330.30	5,554.95	0.00	0.00	0.00
13,100.00	89.93	0.05	7,720.70	5,655.24	-330.21	5,654.95	0.00	0.00	0.00
13,200.00	89.93	0.05	7,720.81	5,755.24	-330.13	5,754.95	0.00	0.00	0.00
13,300.00	89.93	0.05	7,720.92	5,855.24	-330.04	5,854.95	0.00	0.00	0.00
13,400.00	89.93	0.05	7,721.04	5,955.24	-329.95	5,954.95	0.00	0.00	0.00
13,500.00	89.93	0.05	7,721.15	6,055.24	-329.86	6,054.95	0.00	0.00	0.00
13,600.00	89.93	0.05	7,721.27	6,155.24	-329.77	6,154.95	0.00	0.00	0.00
13,700.00	89.93	0.05	7,721.38	6,255.24	-329.69	6,254.95	0.00	0.00	0.00
13,800.00	89.93	0.05	7,721.49	6,355.24	-329.60	6,354.95	0.00	0.00	0.00
13,900.00	89.93	0.05	7,721.61	6,455.24	-329.51	6,454.95	0.00	0.00	0.00
14,000.00	89.93	0.05	7,721.72	6,555.24	-329.42	6,554.95	0.00	0.00	0.00
14,100.00	89.93	0.05	7,721.84	6,655.24	-329.33	6,654.95	0.00	0.00	0.00
14,200.00	89.93	0.05	7,721.95	6,755.24	-329.25	6,754.95	0.00	0.00	0.00
14,300.00	89.93	0.05	7,722.06	6,855.24	-329.16	6,854.95	0.00	0.00	0.00
14,400.00	89.93	0.05	7,722.18	6,955.24	-329.07	6,954.95	0.00	0.00	0.00
14,500.00	89.93	0.05	7,722.29	7,055.24	-328.98	7,054.95	0.00	0.00	0.00
14,600.00	89.93	0.05	7,722.41	7,155.24	-328.90	7,154.95	0.00	0.00	0.00
14,700.00	89.93	0.05	7,722.52	7,255.24	-328.81	7,254.95	0.00	0.00	0.00
14,800.00	89.93	0.05	7,722.63	7,355.24	-328.72	7,354.95	0.00	0.00	0.00
14,900.00	89.93	0.05	7,722.75	7,455.24	-328.63	7,454.95	0.00	0.00	0.00
15,000.00	89.93	0.05	7,722.86	7,555.24	-328.54	7,554.95	0.00	0.00	0.00
15,100.00	89.93	0.05	7,722.98	7,655.24	-328.46	7,654.95	0.00	0.00	0.00
15,200.00	89.93	0.05	7,723.09	7,755.24	-328.37	7,754.95	0.00	0.00	0.00
15,300.00	89.93	0.05	7,723.20	7,855.24	-328.28	7,854.95	0.00	0.00	0.00
15,400.00	89.93	0.05	7,723.32	7,955.24	-328.19	7,954.95	0.00	0.00	0.00
15,500.00	89.93	0.05	7,723.43	8,055.24	-328.11	8,054.95	0.00	0.00	0.00
15,600.00	89.93	0.05	7,723.55	8,155.24	-328.02	8,154.95	0.00	0.00	0.00
15,700.00	89.93	0.05	7,723.66	8,255.24	-327.93	8,254.95	0.00	0.00	0.00
15,800.00	89.93	0.05	7,723.77	8,355.24	-327.84	8,354.95	0.00	0.00	0.00
15,900.00	89.93	0.05	7,723.89	8,455.24	-327.75	8,454.95	0.00	0.00	0.00
16,000.00	89.93	0.05	7,724.00	8,555.24	-327.67	8,554.95	0.00	0.00	0.00
16,100.00	89.93	0.05	7,724.12	8,655.24	-327.58	8,654.95	0.00	0.00	0.00
16,200.00	89.93	0.05	7,724.23	8,755.24	-327.49	8,754.95	0.00	0.00	0.00
16,300.00	89.93	0.05	7,724.34	8,855.24	-327.40	8,854.95	0.00	0.00	0.00
16,400.00	89.93	0.05	7,724.46	8,955.24	-327.31	8,954.95	0.00	0.00	0.00
16,500.00	89.93	0.05	7,724.57	9,055.24	-327.23	9,054.95	0.00	0.00	0.00
16,600.00	89.93	0.05	7,724.69	9,155.24	-327.14	9,154.95	0.00	0.00	0.00
16,700.00	89.93	0.05	7,724.80	9,255.24	-327.05	9,254.95	0.00	0.00	0.00
16,800.00	89.93	0.05	7,724.91	9,355.24	-326.96	9,354.95	0.00	0.00	0.00
16,900.00	89.93	0.05	7,725.03	9,455.24	-326.88	9,454.95	0.00	0.00	0.00
17,000.00	89.93	0.05	7,725.14	9,555.24	-326.79	9,554.95	0.00	0.00	0.00
17,100.00	89.93	0.05	7,725.26	9,655.24	-326.70	9,654.95	0.00	0.00	0.00
17,200.00	89.93	0.05	7,725.37	9,755.24	-326.61	9,754.95	0.00	0.00	0.00
17,300.00	89.93	0.05	7,725.48	9,855.24	-326.52	9,854.95	0.00	0.00	0.00
17,400.00	89.93	0.05	7,725.60	9,955.24	-326.44	9,954.95	0.00	0.00	0.00
17,500.00	89.93	0.05	7,725.71	10,055.24	-326.35	10,054.95	0.00	0.00	0.00
17,600.00	89.93	0.05	7,725.83	10,155.24	-326.26	10,154.95	0.00	0.00	0.00
17,700.00	89.93	0.05	7,725.94	10,255.24	-326.17	10,254.95	0.00	0.00	0.00
17,752.62	89.93	0.05	7,726.00	10,307.86	-326.13	10,307.57	0.00	0.00	0.00
<b>Toe:</b>									
17,752.63	89.93	0.05	7,726.00	10,307.87	-326.13	10,307.58	0.00	0.00	0.00
<b>TD Well @ 17752.63ft</b>									

# Anadarko

## Planning Report

<b>Database:</b>	PLANNING	<b>Local Co-ordinate Reference:</b>	Well JZM 28C-3HZ
<b>Company:</b>	US ROCKIES WATTENBERG PLANNING	<b>TVD Reference:</b>	RKB = 17' @ 5080.00usft (D Rig)
<b>Project:</b>	WELD-NAD83-UTMFT13N	<b>MD Reference:</b>	RKB = 17' @ 5080.00usft (D Rig)
<b>Site:</b>	1N-67W-10 JZM 15-10HZ Pad	<b>North Reference:</b>	True
<b>Well:</b>	JZM 28C-3HZ	<b>Survey Calculation Method:</b>	Minimum Curvature
<b>Wellbore:</b>	Plan A		
<b>Design:</b>	Permit Rev-1		

Design Targets										
Target Name	Dip Angle	Dip Dir.	TVD	+N/-S	+E/-W	Northing	Easting	Latitude	Longitude	
- hit/miss target	(°)	(°)	(usft)	(usft)	(usft)	(usft)	(usft)			
- Shape										
1N-R67W-Sec. 10_Secti	0.00	0.00	0.00	0.00	14.83	14,548,267.29	1,675,207.90	40.059069	-104.875661	
- plan misses target center by 14.83usft at 0.00usft MD (0.00 TVD, 0.00 N, 0.00 E)										
- Polygon										
Point 1			0.00	4,992.86	-2,976.12	14,553,255.99	1,672,224.81			
Point 2			0.00	4,994.59	-331.69	14,553,261.41	1,674,869.24			
Point 3			0.00	4,996.25	2,313.07	14,553,266.76	1,677,513.99			
Point 4			0.00	2,354.63	2,320.05	14,550,625.15	1,677,524.66			
Point 5			0.00	-287.06	2,326.97	14,547,983.47	1,677,535.27			
Point 6			0.00	-288.46	-327.65	14,547,978.37	1,674,880.65			
Point 7			0.00	-290.97	-2,982.55	14,547,972.15	1,672,225.76			
JZM 28C-3HZ_SHL	0.00	0.00	0.00	0.00	0.00	14,548,267.26	1,675,193.07	40.059069	-104.875714	
- plan hits target center										
- Point										
JZM 28C-3HZ_460' Poly	0.00	0.00	0.00	0.00	0.00	14,548,267.26	1,675,193.07	40.059069	-104.875714	
- plan hits target center										
- Polygon										
Point 1			0.00	1,489.89	-310.45	14,549,756.72	1,674,880.54			
Point 2			0.00	1,489.46	-291.31	14,549,756.32	1,674,899.68			
Point 3			0.00	1,488.23	-272.22	14,549,755.11	1,674,918.77			
Point 4			0.00	1,486.23	-253.18	14,549,753.14	1,674,937.82			
Point 5			0.00	1,483.42	-234.25	14,549,750.36	1,674,956.75			
Point 6			0.00	1,479.83	-215.45	14,549,746.79	1,674,975.56			
Point 7			0.00	1,475.46	-196.81	14,549,742.45	1,674,994.20			
Point 8			0.00	1,470.32	-178.38	14,549,737.33	1,675,012.64			
Point 9			0.00	1,464.42	-160.17	14,549,731.46	1,675,030.86			
Point 10			0.00	1,457.76	-142.23	14,549,724.82	1,675,048.81			
Point 11			0.00	1,450.37	-124.57	14,549,717.46	1,675,066.48			
Point 12			0.00	1,442.24	-107.24	14,549,709.35	1,675,083.82			
Point 13			0.00	1,433.41	-90.26	14,549,700.55	1,675,100.81			
Point 14			0.00	1,423.87	-73.67	14,549,691.03	1,675,117.41			
Point 15			0.00	1,413.65	-57.49	14,549,680.83	1,675,133.61			
Point 16			0.00	1,402.77	-41.75	14,549,669.97	1,675,149.36			
Point 17			0.00	1,391.25	-26.46	14,549,658.48	1,675,164.67			
Point 18			0.00	1,379.10	-11.68	14,549,646.35	1,675,179.47			
Point 19			0.00	1,366.34	2.59	14,549,633.61	1,675,193.75			
Point 20			0.00	1,353.00	16.32	14,549,620.29	1,675,207.50			
Point 21			0.00	1,339.10	29.48	14,549,606.40	1,675,220.68			
Point 22			0.00	1,324.66	42.05	14,549,591.98	1,675,233.27			
Point 23			0.00	1,309.72	54.00	14,549,577.06	1,675,245.24			
Point 24			0.00	1,294.29	65.32	14,549,561.64	1,675,256.58			
Point 25			0.00	1,278.41	76.00	14,549,545.78	1,675,267.29			
Point 26			0.00	1,262.08	86.00	14,549,529.46	1,675,277.31			
Point 27			0.00	1,245.37	95.32	14,549,512.77	1,675,286.65			
Point 28			0.00	1,228.28	103.93	14,549,495.69	1,675,295.29			
Point 29			0.00	1,210.84	111.82	14,549,478.26	1,675,303.20			
Point 30			0.00	1,193.09	118.98	14,549,460.52	1,675,310.39			
Point 31			0.00	1,175.06	125.40	14,549,442.50	1,675,316.83			
Point 32			0.00	1,156.77	131.06	14,549,424.22	1,675,322.52			
Point 33			0.00	1,138.27	135.96	14,549,405.72	1,675,327.44			
Point 34			0.00	1,119.58	140.08	14,549,387.04	1,675,331.59			
Point 35			0.00	1,100.73	143.42	14,549,368.19	1,675,334.95			
Point 36			0.00	1,081.77	145.98	14,549,349.24	1,675,337.54			
Point 37			0.00	1,062.71	147.74	14,549,330.18	1,675,339.33			
Point 38			0.00	1,043.59	148.70	14,549,311.06	1,675,340.31			
Point 39			0.00	1,024.45	148.88	14,549,291.92	1,675,340.52			
Point 40			0.00	1,005.32	148.25	14,549,272.79	1,675,339.92			
Point 41			0.00	986.24	146.83	14,549,253.71	1,675,338.52			

# Anadarko

## Planning Report

<b>Database:</b>	PLANNING	<b>Local Co-ordinate Reference:</b>	Well JZM 28C-3HZ
<b>Company:</b>	US ROCKIES WATTENBERG PLANNING	<b>TVD Reference:</b>	RKB = 17' @ 5080.00usft (D Rig)
<b>Project:</b>	WELD-NAD83-UTMFT13N	<b>MD Reference:</b>	RKB = 17' @ 5080.00usft (D Rig)
<b>Site:</b>	1N-67W-10 JZM 15-10HZ Pad	<b>North Reference:</b>	True
<b>Well:</b>	JZM 28C-3HZ	<b>Survey Calculation Method:</b>	Minimum Curvature
<b>Wellbore:</b>	Plan A		
<b>Design:</b>	Permit Rev-1		

Point 42	0.00	967.23	144.62	14,549,234.70	1,675,336.34
Point 43	0.00	948.32	141.62	14,549,215.78	1,675,333.37
Point 44	0.00	929.56	137.83	14,549,197.02	1,675,329.60
Point 45	0.00	910.98	133.28	14,549,178.43	1,675,325.08
Point 46	0.00	892.59	127.94	14,549,160.03	1,675,319.76
Point 47	0.00	874.45	121.86	14,549,141.88	1,675,313.71
Point 48	0.00	856.57	115.01	14,549,123.99	1,675,306.88
Point 49	0.00	839.00	107.44	14,549,106.41	1,675,299.34
Point 50	0.00	821.75	99.13	14,549,089.15	1,675,291.05
Point 51	0.00	804.87	90.12	14,549,072.26	1,675,282.07
Point 52	0.00	788.37	80.41	14,549,055.75	1,675,272.38
Point 53	0.00	772.29	70.02	14,549,039.65	1,675,262.01
Point 54	0.00	756.67	58.98	14,549,024.02	1,675,250.99
Point 55	0.00	741.51	47.29	14,549,008.84	1,675,239.33
Point 56	0.00	726.85	34.99	14,548,994.16	1,675,227.05
Point 57	0.00	712.71	22.08	14,548,980.00	1,675,214.16
Point 58	0.00	699.13	8.60	14,548,966.41	1,675,200.69
Point 59	0.00	686.12	-5.44	14,548,953.38	1,675,186.67
Point 60	0.00	673.70	-20.00	14,548,940.94	1,675,172.13
Point 61	0.00	661.90	-35.07	14,548,929.11	1,675,157.08
Point 62	0.00	650.73	-50.62	14,548,917.92	1,675,141.54
Point 63	0.00	640.22	-66.61	14,548,907.39	1,675,125.57
Point 64	0.00	630.40	-83.03	14,548,897.55	1,675,109.16
Point 65	0.00	621.25	-99.85	14,548,888.37	1,675,092.35
Point 66	0.00	612.82	-117.03	14,548,879.92	1,675,075.19
Point 67	0.00	605.11	-134.55	14,548,872.19	1,675,057.68
Point 68	0.00	598.13	-152.37	14,548,865.18	1,675,039.87
Point 69	0.00	591.90	-170.47	14,548,858.93	1,675,021.77
Point 70	0.00	586.43	-188.80	14,548,853.43	1,675,003.45
Point 71	0.00	581.73	-207.36	14,548,848.70	1,674,984.90
Point 72	0.00	577.81	-226.09	14,548,844.76	1,674,966.17
Point 73	0.00	574.65	-244.97	14,548,841.57	1,674,947.30
Point 74	0.00	572.30	-263.96	14,548,839.20	1,674,928.31
Point 75	0.00	570.74	-283.04	14,548,837.61	1,674,909.23
Point 76	0.00	569.96	-302.17	14,548,836.80	1,674,890.11
Point 77	0.00	569.99	-321.31	14,548,836.81	1,674,870.97
Point 78	0.00	570.82	-340.43	14,548,837.61	1,674,851.84
Point 79	0.00	572.43	-359.49	14,548,839.19	1,674,832.78
Point 80	0.00	574.84	-378.48	14,548,841.58	1,674,813.79
Point 81	0.00	578.05	-397.36	14,548,844.76	1,674,794.90
Point 82	0.00	582.02	-416.07	14,548,848.70	1,674,776.19
Point 83	0.00	586.78	-434.61	14,548,853.44	1,674,757.64
Point 84	0.00	592.29	-452.94	14,548,858.92	1,674,739.30
Point 85	0.00	598.58	-471.02	14,548,865.19	1,674,721.22
Point 86	0.00	605.60	-488.82	14,548,872.18	1,674,703.41
Point 87	0.00	613.37	-506.32	14,548,879.93	1,674,685.90
Point 88	0.00	621.84	-523.48	14,548,888.37	1,674,668.72
Point 89	0.00	631.04	-540.26	14,548,897.55	1,674,651.93
Point 90	0.00	640.91	-556.66	14,548,907.40	1,674,635.52
Point 91	0.00	651.46	-572.62	14,548,917.92	1,674,619.54
Point 92	0.00	662.67	-588.14	14,548,929.11	1,674,604.01
Point 93	0.00	674.51	-603.18	14,548,940.93	1,674,588.95
Point 94	0.00	686.97	-617.70	14,548,953.37	1,674,574.41
Point 95	0.00	700.02	-631.71	14,548,966.40	1,674,560.38
Point 96	0.00	713.64	-645.15	14,548,980.00	1,674,546.93
Point 97	0.00	727.82	-658.02	14,548,994.17	1,674,534.04
Point 98	0.00	742.51	-670.28	14,549,008.84	1,674,521.75
Point 99	0.00	757.70	-681.93	14,549,024.01	1,674,510.08
Point 100	0.00	773.36	-692.92	14,549,039.66	1,674,499.07
Point 101	0.00	789.46	-703.26	14,549,055.74	1,674,488.71
Point 102	0.00	805.99	-712.93	14,549,072.26	1,674,479.02
Point 103	0.00	822.90	-721.90	14,549,089.16	1,674,470.02
Point 104	0.00	840.17	-730.15	14,549,106.41	1,674,461.75
Point 105	0.00	857.76	-737.68	14,549,123.99	1,674,454.19

# Anadarko

## Planning Report

<b>Database:</b>	PLANNING	<b>Local Co-ordinate Reference:</b>	Well JZM 28C-3HZ
<b>Company:</b>	US ROCKIES WATTENBERG PLANNING	<b>TVD Reference:</b>	RKB = 17' @ 5080.00usft (D Rig)
<b>Project:</b>	WELD-NAD83-UTMFT13N	<b>MD Reference:</b>	RKB = 17' @ 5080.00usft (D Rig)
<b>Site:</b>	1N-67W-10 JZM 15-10HZ Pad	<b>North Reference:</b>	True
<b>Well:</b>	JZM 28C-3HZ	<b>Survey Calculation Method:</b>	Minimum Curvature
<b>Wellbore:</b>	Plan A		
<b>Design:</b>	Permit Rev-1		

Point 106	0.00	875.66	-744.47	14,549,141.88	1,674,447.38				
Point 107	0.00	893.82	-750.51	14,549,160.04	1,674,441.31				
Point 108	0.00	912.22	-755.79	14,549,178.43	1,674,436.01				
Point 109	0.00	930.81	-760.29	14,549,197.01	1,674,431.48				
Point 110	0.00	949.59	-764.03	14,549,215.79	1,674,427.72				
Point 111	0.00	968.50	-766.98	14,549,234.69	1,674,424.74				
Point 112	0.00	987.52	-769.14	14,549,253.71	1,674,422.55				
Point 113	0.00	1,006.61	-770.50	14,549,272.80	1,674,421.17				
Point 114	0.00	1,025.74	-771.07	14,549,291.93	1,674,420.57				
Point 115	0.00	1,044.88	-770.85	14,549,311.07	1,674,420.76				
Point 116	0.00	1,063.99	-769.83	14,549,330.18	1,674,421.76				
Point 117	0.00	1,083.04	-768.01	14,549,349.23	1,674,423.55				
Point 118	0.00	1,102.00	-765.41	14,549,368.19	1,674,426.12				
Point 119	0.00	1,120.84	-762.01	14,549,387.04	1,674,429.50				
Point 120	0.00	1,139.52	-757.83	14,549,405.73	1,674,433.65				
Point 121	0.00	1,158.00	-752.89	14,549,424.21	1,674,438.56				
Point 122	0.00	1,176.27	-747.17	14,549,442.49	1,674,444.26				
Point 123	0.00	1,194.29	-740.71	14,549,460.52	1,674,450.69				
Point 124	0.00	1,212.02	-733.50	14,549,478.26	1,674,457.88				
Point 125	0.00	1,229.43	-725.56	14,549,495.68	1,674,465.80				
Point 126	0.00	1,246.50	-716.89	14,549,512.76	1,674,474.44				
Point 127	0.00	1,263.19	-707.53	14,549,529.47	1,674,483.78				
Point 128	0.00	1,279.49	-697.49	14,549,545.78	1,674,493.80				
Point 129	0.00	1,295.34	-686.77	14,549,561.64	1,674,504.49				
Point 130	0.00	1,310.73	-675.40	14,549,577.05	1,674,515.84				
Point 131	0.00	1,325.65	-663.40	14,549,591.99	1,674,527.82				
Point 132	0.00	1,340.05	-650.79	14,549,606.40	1,674,540.41				
Point 133	0.00	1,353.91	-637.59	14,549,620.28	1,674,553.59				
Point 134	0.00	1,367.21	-623.84	14,549,633.60	1,674,567.32				
Point 135	0.00	1,379.93	-609.53	14,549,646.34	1,674,581.61				
Point 136	0.00	1,392.04	-594.71	14,549,658.47	1,674,596.42				
Point 137	0.00	1,403.52	-579.40	14,549,669.97	1,674,611.71				
Point 138	0.00	1,414.36	-563.63	14,549,680.84	1,674,627.47				
Point 139	0.00	1,424.54	-547.42	14,549,691.04	1,674,643.66				
Point 140	0.00	1,434.02	-530.79	14,549,700.54	1,674,660.28				
Point 141	0.00	1,442.81	-513.79	14,549,709.36	1,674,677.27				
Point 142	0.00	1,450.89	-496.44	14,549,717.46	1,674,694.61				
Point 143	0.00	1,458.23	-478.76	14,549,724.82	1,674,712.28				
Point 144	0.00	1,464.84	-460.80	14,549,731.46	1,674,730.23				
Point 145	0.00	1,470.69	-442.57	14,549,737.34	1,674,748.45				
Point 146	0.00	1,475.77	-424.12	14,549,742.44	1,674,766.89				
Point 147	0.00	1,480.10	-405.48	14,549,746.80	1,674,785.52				
Point 148	0.00	1,483.63	-386.67	14,549,750.35	1,674,804.33				
Point 149	0.00	1,486.39	-367.73	14,549,753.14	1,674,823.27				
Point 150	0.00	1,488.34	-348.69	14,549,755.12	1,674,842.30				
Point 151	0.00	1,489.51	-329.58	14,549,756.31	1,674,861.41				
Point 152	0.00	1,489.89	-310.45	14,549,756.72	1,674,880.54				
JZM 28C-3HZ_460' Poly	0.00	0.00	0.00	0.00	0.00	14,548,267.26	1,675,193.07	40.059069	-104.875714
- plan hits target center									
- Polygon									
Point 1	0.00	10,814.16	-341.95	14,559,080.94	1,674,836.02				
Point 2	0.00	10,812.15	-322.92	14,559,078.95	1,674,855.06				
Point 3	0.00	10,809.35	-303.98	14,559,076.18	1,674,874.00				
Point 4	0.00	10,805.75	-285.18	14,559,072.61	1,674,892.80				
Point 5	0.00	10,801.38	-266.54	14,559,068.26	1,674,911.45				
Point 6	0.00	10,796.25	-248.11	14,559,063.16	1,674,929.89				
Point 7	0.00	10,790.34	-229.91	14,559,057.27	1,674,948.10				
Point 8	0.00	10,783.69	-211.96	14,559,050.65	1,674,966.06				
Point 9	0.00	10,776.29	-194.31	14,559,043.27	1,674,983.72				
Point 10	0.00	10,768.17	-176.98	14,559,035.18	1,675,001.06				
Point 11	0.00	10,759.33	-160.00	14,559,026.36	1,675,018.05				
Point 12	0.00	10,749.80	-143.41	14,559,016.85	1,675,034.65				
Point 13	0.00	10,739.58	-127.22	14,559,006.66	1,675,050.86				

# Anadarko

## Planning Report

<b>Database:</b>	PLANNING	<b>Local Co-ordinate Reference:</b>	Well JZM 28C-3HZ
<b>Company:</b>	US ROCKIES WATTENBERG PLANNING	<b>TVD Reference:</b>	RKB = 17' @ 5080.00usft (D Rig)
<b>Project:</b>	WELD-NAD83-UTMFT13N	<b>MD Reference:</b>	RKB = 17' @ 5080.00usft (D Rig)
<b>Site:</b>	1N-67W-10 JZM 15-10HZ Pad	<b>North Reference:</b>	True
<b>Well:</b>	JZM 28C-3HZ	<b>Survey Calculation Method:</b>	Minimum Curvature
<b>Wellbore:</b>	Plan A		
<b>Design:</b>	Permit Rev-1		

Point 14	0.00	10,728.70	-111.47	14,558,995.80	1,675,066.62
Point 15	0.00	10,717.18	-96.19	14,558,984.30	1,675,081.92
Point 16	0.00	10,705.02	-81.41	14,558,972.16	1,675,096.72
Point 17	0.00	10,692.26	-67.15	14,558,959.42	1,675,110.99
Point 18	0.00	10,678.93	-53.41	14,558,946.11	1,675,124.75
Point 19	0.00	10,665.03	-40.26	14,558,932.23	1,675,137.92
Point 20	0.00	10,650.59	-27.69	14,558,917.81	1,675,150.51
Point 21	0.00	10,635.64	-15.73	14,558,902.87	1,675,162.49
Point 22	0.00	10,620.22	-4.41	14,558,887.47	1,675,173.83
Point 23	0.00	10,604.33	6.26	14,558,871.59	1,675,184.53
Point 24	0.00	10,588.01	16.27	14,558,855.29	1,675,194.56
Point 25	0.00	10,571.30	25.59	14,558,838.59	1,675,203.90
Point 26	0.00	10,554.20	34.19	14,558,821.50	1,675,212.53
Point 27	0.00	10,536.76	42.09	14,558,804.07	1,675,220.45
Point 28	0.00	10,519.01	49.25	14,558,786.33	1,675,227.63
Point 29	0.00	10,500.98	55.67	14,558,768.31	1,675,234.08
Point 30	0.00	10,482.70	61.33	14,558,750.04	1,675,239.77
Point 31	0.00	10,464.20	66.23	14,558,731.55	1,675,244.69
Point 32	0.00	10,445.50	70.34	14,558,712.85	1,675,248.83
Point 33	0.00	10,426.66	73.68	14,558,694.02	1,675,252.19
Point 34	0.00	10,407.69	76.24	14,558,675.05	1,675,254.78
Point 35	0.00	10,388.63	78.00	14,558,655.99	1,675,256.57
Point 36	0.00	10,369.52	78.97	14,558,636.88	1,675,257.56
Point 37	0.00	10,350.38	79.15	14,558,617.75	1,675,257.77
Point 38	0.00	10,331.25	78.52	14,558,598.61	1,675,257.17
Point 39	0.00	10,312.16	77.10	14,558,579.52	1,675,255.77
Point 40	0.00	10,293.16	74.89	14,558,560.52	1,675,253.59
Point 41	0.00	10,274.25	71.89	14,558,541.61	1,675,250.62
Point 42	0.00	10,255.49	68.10	14,558,522.84	1,675,246.85
Point 43	0.00	10,236.90	63.54	14,558,504.24	1,675,242.32
Point 44	0.00	10,218.52	58.21	14,558,485.86	1,675,237.01
Point 45	0.00	10,200.38	52.12	14,558,467.71	1,675,230.95
Point 46	0.00	10,182.50	45.28	14,558,449.82	1,675,224.13
Point 47	0.00	10,164.93	37.70	14,558,432.24	1,675,216.58
Point 48	0.00	10,147.68	29.39	14,558,414.98	1,675,208.29
Point 49	0.00	10,130.79	20.38	14,558,398.07	1,675,199.31
Point 50	0.00	10,114.30	10.68	14,558,381.57	1,675,189.63
Point 51	0.00	10,098.22	0.29	14,558,365.48	1,675,179.26
Point 52	0.00	10,082.60	-10.76	14,558,349.84	1,675,168.23
Point 53	0.00	10,067.43	-22.44	14,558,334.65	1,675,156.58
Point 54	0.00	10,052.78	-34.75	14,558,319.99	1,675,144.29
Point 55	0.00	10,038.64	-47.65	14,558,305.83	1,675,131.41
Point 56	0.00	10,025.06	-61.14	14,558,292.23	1,675,117.93
Point 57	0.00	10,012.05	-75.17	14,558,279.20	1,675,103.92
Point 58	0.00	9,999.63	-89.73	14,558,266.76	1,675,089.38
Point 59	0.00	9,987.83	-104.80	14,558,254.94	1,675,074.33
Point 60	0.00	9,976.66	-120.34	14,558,243.75	1,675,058.80
Point 61	0.00	9,966.15	-136.35	14,558,233.21	1,675,042.81
Point 62	0.00	9,956.32	-152.76	14,558,223.36	1,675,026.41
Point 63	0.00	9,947.18	-169.58	14,558,214.20	1,675,009.60
Point 64	0.00	9,938.75	-186.76	14,558,205.74	1,674,992.44
Point 65	0.00	9,931.04	-204.28	14,558,198.01	1,674,974.93
Point 66	0.00	9,924.06	-222.10	14,558,191.00	1,674,957.12
Point 67	0.00	9,917.83	-240.20	14,558,184.75	1,674,939.02
Point 68	0.00	9,912.36	-258.54	14,558,179.25	1,674,920.69
Point 69	0.00	9,907.66	-277.09	14,558,174.53	1,674,902.15
Point 70	0.00	9,903.73	-295.83	14,558,170.57	1,674,883.41
Point 71	0.00	9,900.58	-314.70	14,558,167.40	1,674,864.55
Point 72	0.00	9,898.23	-333.69	14,558,165.02	1,674,845.56
Point 73	0.00	9,896.66	-352.78	14,558,163.42	1,674,826.47
Point 74	0.00	9,895.89	-371.90	14,558,162.63	1,674,807.36
Point 75	0.00	9,895.92	-391.04	14,558,162.63	1,674,788.22
Point 76	0.00	9,896.74	-410.16	14,558,163.42	1,674,769.09
Point 77	0.00	9,898.36	-429.23	14,558,165.02	1,674,750.02

# Anadarko

## Planning Report

<b>Database:</b>	PLANNING	<b>Local Co-ordinate Reference:</b>	Well JZM 28C-3HZ
<b>Company:</b>	US ROCKIES WATTENBERG PLANNING	<b>TVD Reference:</b>	RKB = 17' @ 5080.00usft (D Rig)
<b>Project:</b>	WELD-NAD83-UTMFT13N	<b>MD Reference:</b>	RKB = 17' @ 5080.00usft (D Rig)
<b>Site:</b>	1N-67W-10 JZM 15-10HZ Pad	<b>North Reference:</b>	True
<b>Well:</b>	JZM 28C-3HZ	<b>Survey Calculation Method:</b>	Minimum Curvature
<b>Wellbore:</b>	Plan A		
<b>Design:</b>	Permit Rev-1		

Point 78	0.00	9,900.77	-448.22	14,558,167.40	1,674,731.03
Point 79	0.00	9,903.97	-467.09	14,558,170.57	1,674,712.15
Point 80	0.00	9,907.95	-485.81	14,558,174.53	1,674,693.43
Point 81	0.00	9,912.70	-504.34	14,558,179.25	1,674,674.89
Point 82	0.00	9,918.22	-522.68	14,558,184.75	1,674,656.54
Point 83	0.00	9,924.51	-540.76	14,558,191.01	1,674,638.46
Point 84	0.00	9,931.53	-558.56	14,558,198.01	1,674,620.65
Point 85	0.00	9,939.29	-576.05	14,558,205.74	1,674,603.14
Point 86	0.00	9,947.77	-593.21	14,558,214.20	1,674,585.97
Point 87	0.00	9,956.96	-610.00	14,558,223.36	1,674,569.17
Point 88	0.00	9,966.83	-626.39	14,558,233.21	1,674,552.77
Point 89	0.00	9,977.39	-642.36	14,558,243.75	1,674,536.78
Point 90	0.00	9,988.60	-657.88	14,558,254.94	1,674,521.25
Point 91	0.00	10,000.44	-672.91	14,558,266.76	1,674,506.20
Point 92	0.00	10,012.90	-687.44	14,558,279.20	1,674,491.65
Point 93	0.00	10,025.95	-701.44	14,558,292.23	1,674,477.63
Point 94	0.00	10,039.57	-714.89	14,558,305.83	1,674,464.17
Point 95	0.00	10,053.75	-727.75	14,558,319.99	1,674,451.29
Point 96	0.00	10,068.43	-740.02	14,558,334.65	1,674,438.99
Point 97	0.00	10,083.63	-751.66	14,558,349.84	1,674,427.33
Point 98	0.00	10,099.29	-762.66	14,558,365.48	1,674,416.31
Point 99	0.00	10,115.39	-773.00	14,558,381.57	1,674,405.95
Point 100	0.00	10,131.91	-782.66	14,558,398.07	1,674,396.27
Point 101	0.00	10,148.83	-791.63	14,558,414.98	1,674,387.27
Point 102	0.00	10,166.10	-799.88	14,558,432.24	1,674,379.00
Point 103	0.00	10,183.69	-807.41	14,558,449.82	1,674,371.44
Point 104	0.00	10,201.59	-814.20	14,558,467.71	1,674,364.63
Point 105	0.00	10,219.75	-820.25	14,558,485.86	1,674,358.55
Point 106	0.00	10,238.14	-825.52	14,558,504.24	1,674,353.26
Point 107	0.00	10,256.74	-830.03	14,558,522.84	1,674,348.72
Point 108	0.00	10,275.51	-833.77	14,558,541.60	1,674,344.96
Point 109	0.00	10,294.43	-836.71	14,558,560.52	1,674,341.99
Point 110	0.00	10,313.44	-838.87	14,558,579.52	1,674,339.80
Point 111	0.00	10,332.53	-840.24	14,558,598.61	1,674,338.41
Point 112	0.00	10,351.66	-840.80	14,558,617.74	1,674,337.82
Point 113	0.00	10,370.80	-840.59	14,558,636.88	1,674,338.00
Point 114	0.00	10,389.91	-839.56	14,558,655.99	1,674,339.01
Point 115	0.00	10,408.97	-837.74	14,558,675.06	1,674,340.80
Point 116	0.00	10,427.93	-835.14	14,558,694.02	1,674,343.37
Point 117	0.00	10,446.76	-831.74	14,558,712.85	1,674,346.75
Point 118	0.00	10,465.45	-827.57	14,558,731.55	1,674,350.89
Point 119	0.00	10,483.93	-822.62	14,558,750.04	1,674,355.81
Point 120	0.00	10,502.20	-816.91	14,558,768.31	1,674,361.50
Point 121	0.00	10,520.21	-810.45	14,558,786.33	1,674,367.93
Point 122	0.00	10,537.94	-803.23	14,558,804.07	1,674,375.13
Point 123	0.00	10,555.36	-795.29	14,558,821.50	1,674,383.05
Point 124	0.00	10,572.43	-786.63	14,558,838.59	1,674,391.68
Point 125	0.00	10,589.12	-777.27	14,558,855.29	1,674,401.02
Point 126	0.00	10,605.41	-767.22	14,558,871.59	1,674,411.05
Point 127	0.00	10,621.27	-756.51	14,558,887.47	1,674,421.73
Point 128	0.00	10,636.66	-745.13	14,558,902.87	1,674,433.09
Point 129	0.00	10,651.57	-733.13	14,558,917.80	1,674,445.07
Point 130	0.00	10,665.98	-720.52	14,558,932.23	1,674,457.66
Point 131	0.00	10,679.84	-707.33	14,558,946.11	1,674,470.83
Point 132	0.00	10,693.14	-693.57	14,558,959.43	1,674,484.57
Point 133	0.00	10,705.86	-679.27	14,558,972.17	1,674,498.85
Point 134	0.00	10,717.97	-664.44	14,558,984.30	1,674,513.67
Point 135	0.00	10,729.45	-649.13	14,558,995.80	1,674,528.96
Point 136	0.00	10,740.29	-633.36	14,559,006.66	1,674,544.72
Point 137	0.00	10,750.46	-617.15	14,559,016.85	1,674,560.91
Point 138	0.00	10,759.95	-600.52	14,559,026.37	1,674,577.53
Point 139	0.00	10,768.74	-583.52	14,559,035.18	1,674,594.52
Point 140	0.00	10,776.81	-566.17	14,559,043.27	1,674,611.86
Point 141	0.00	10,784.16	-548.50	14,559,050.65	1,674,629.52

# Anadarko Planning Report

<b>Database:</b>	PLANNING	<b>Local Co-ordinate Reference:</b>	Well JZM 28C-3HZ
<b>Company:</b>	US ROCKIES WATTENBERG PLANNING	<b>TVD Reference:</b>	RKB = 17' @ 5080.00usft (D Rig)
<b>Project:</b>	WELD-NAD83-UTMFT13N	<b>MD Reference:</b>	RKB = 17' @ 5080.00usft (D Rig)
<b>Site:</b>	1N-67W-10 JZM 15-10HZ Pad	<b>North Reference:</b>	True
<b>Well:</b>	JZM 28C-3HZ	<b>Survey Calculation Method:</b>	Minimum Curvature
<b>Wellbore:</b>	Plan A		
<b>Design:</b>	Permit Rev-1		

Point 142			0.00	10,790.76	-530.53	14,559,057.27	1,674,647.48		
Point 143			0.00	10,796.62	-512.31	14,559,063.16	1,674,665.69		
Point 144			0.00	10,801.70	-493.85	14,559,068.26	1,674,684.14		
Point 145			0.00	10,806.01	-475.21	14,559,072.60	1,674,702.77		
Point 146			0.00	10,809.56	-456.40	14,559,076.18	1,674,721.58		
Point 147			0.00	10,812.31	-437.46	14,559,078.95	1,674,740.52		
Point 148			0.00	10,814.27	-418.43	14,559,080.94	1,674,759.54		
Point 149			0.00	10,815.44	-399.31	14,559,082.14	1,674,778.66		
Point 150			0.00	10,815.80	-380.18	14,559,082.52	1,674,797.79		
JZM 28C-3HZ_Hardline	0.00	0.00	0.00	0.00	0.00	14,548,267.26	1,675,193.07	40.059069	-104.875714
- plan hits target center									
- Polygon									
Point 1			0.00	11,217.75	79.65	14,559,485.12	1,675,257.06		
Point 2			0.00	9,011.03	95.98	14,557,278.42	1,675,276.47		
Point 3			0.00	7,666.84	112.74	14,555,934.25	1,675,295.11		
Point 4			0.00	6,329.69	129.41	14,554,597.13	1,675,313.64		
Point 5			0.00	3,671.68	146.92	14,551,939.15	1,675,334.86		
Point 6			0.00	2,350.82	147.79	14,550,618.29	1,675,337.58		
Point 7			0.00	1,030.15	148.90	14,549,297.62	1,675,340.53		
Point 8			0.00	169.48	149.63	14,548,436.95	1,675,342.46		
Point 9			0.00	169.24	-310.36	14,548,436.07	1,674,882.47		
Point 10			0.00	168.81	-770.36	14,548,435.00	1,674,422.48		
Point 11			0.00	1,029.54	-771.09	14,549,295.73	1,674,420.54		
Point 12			0.00	2,350.26	-772.21	14,550,616.44	1,674,417.58		
Point 13			0.00	3,671.10	-773.08	14,551,937.28	1,674,414.87		
Point 14			0.00	6,329.11	-790.65	14,554,595.26	1,674,393.59		
Point 15			0.00	7,666.26	-807.32	14,555,932.39	1,674,375.05		
Point 16			0.00	9,011.31	-824.09	14,557,277.42	1,674,356.40		
Point 17			0.00	10,356.37	-840.83	14,558,622.45	1,674,337.78		
Point 18			0.00	11,218.26	-840.35	14,559,484.34	1,674,337.06		
Point 19			0.00	11,217.96	-380.35	14,559,484.68	1,674,797.06		
Point 20			0.00	11,217.75	79.65	14,559,485.12	1,675,257.06		
1N-R67W-Sec. 3_Sectio	0.00	0.00	0.00	0.00	14.83	14,548,267.29	1,675,207.90	40.059069	-104.875661
- plan misses target center by 14.83usft at 0.00usft MD (0.00 TVD, 0.00 N, 0.00 E)									
- Polygon									
Point 1			0.00	10,361.30	-3,022.88	14,558,624.36	1,672,170.56		
Point 2			0.00	10,358.07	-398.53	14,558,624.79	1,674,794.91		
Point 3			0.00	10,354.85	2,234.71	14,558,625.25	1,677,428.15		
Point 4			0.00	7,634.95	2,286.94	14,555,905.42	1,677,484.18		
Point 5			0.00	4,996.25	2,313.07	14,553,266.76	1,677,513.99		
Point 6			0.00	4,994.59	-331.69	14,553,261.41	1,674,869.24		
Point 7			0.00	4,992.86	-2,976.12	14,553,255.99	1,672,224.81		
Point 8			0.00	7,632.17	-2,992.40	14,555,895.27	1,672,204.85		
JZM 28C-3HZ_BHL	0.00	0.00	7,726.00	10,307.87	-326.13	14,558,574.67	1,674,852.55	40.087376	-104.876880
- plan hits target center									
- Point									

Casing Points						
	Measured Depth (usft)	Vertical Depth (usft)	Name	Casing Diameter (")	Hole Diameter (")	
	1,816.29	1,800.00	9 5/8"	9-5/8	13-1/2	
	8,104.08	7,715.00	7"	7	8-3/4	

# Anadarko

## Planning Report

<b>Database:</b>	PLANNING	<b>Local Co-ordinate Reference:</b>	Well JZM 28C-3HZ
<b>Company:</b>	US ROCKIES WATTENBERG PLANNING	<b>TVD Reference:</b>	RKB = 17' @ 5080.00usft (D Rig)
<b>Project:</b>	WELD-NAD83-UTMFT13N	<b>MD Reference:</b>	RKB = 17' @ 5080.00usft (D Rig)
<b>Site:</b>	1N-67W-10 JZM 15-10HZ Pad	<b>North Reference:</b>	True
<b>Well:</b>	JZM 28C-3HZ	<b>Survey Calculation Method:</b>	Minimum Curvature
<b>Wellbore:</b>	Plan A		
<b>Design:</b>	Permit Rev-1		

Formations						
Measured Depth (usft)	Vertical Depth (usft)	Name	Lithology	Dip (°)	Dip Direction (°)	
1,382.70	1,373.00	Fox Hills		0.00		
4,645.42	4,619.00	Sussex		0.00		
7,341.37	7,309.54	Sharon Springs		0.00		
7,381.60	7,346.54	Niobrara Top		0.00		
7,522.07	7,466.40	Niobrara B Bench		0.00		
7,631.10	7,546.74	Niobrara C Bench		0.00		
7,898.11	7,681.74	Fort Hays		0.00		
8,056.86	7,713.20	Codell		0.00		
8,104.08	7,715.00	Heel:		0.00		
17,752.62	7,726.00	Toe:		0.00		

Plan Annotations					
Measured Depth (usft)	Vertical Depth (usft)	Local Coordinates			Comment
		+N/-S (usft)	+E/-W (usft)		
300.00	300.00	0.00	0.00		Begin Nudge @ 300.00ft
966.67	963.29	4.05	-57.89		End Nudge @ 966.67ft
2,316.67	2,292.78	20.40	-291.74		Begin Drop @ 2316.67ft
2,816.67	2,790.25	23.44	-335.16		End Drop @ 2816.67ft
7,104.81	7,078.39	23.44	-335.16		KOP @ 7104.81ft
7,600.00	7,525.13	206.51	-335.00		DLS = 9°/100'
8,104.08	7,715.00	659.33	-334.60		End Build @ 8104.08ft
17,752.63	7,726.00	10,307.87	-326.13		TD Well @ 17752.63ft