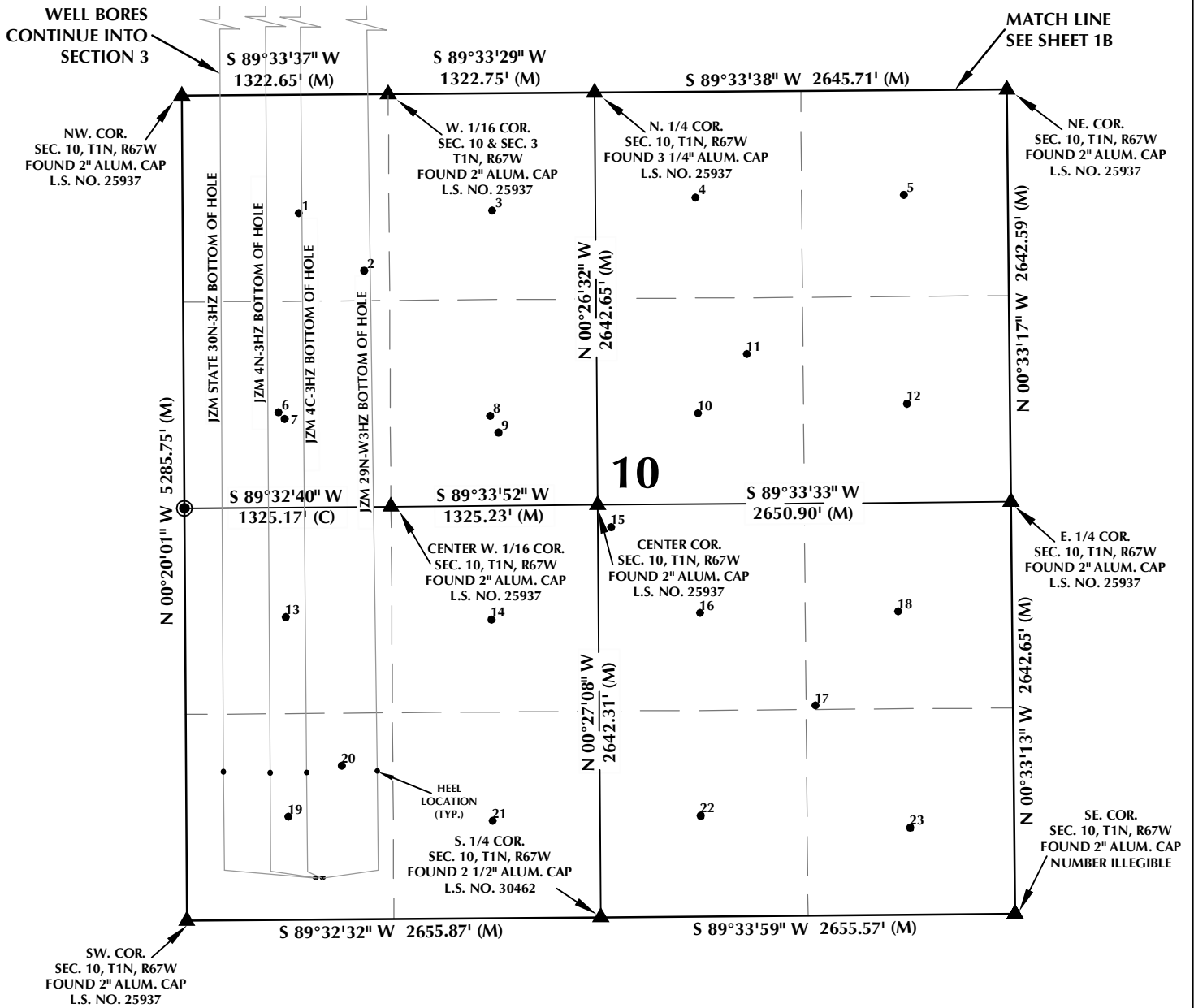


MULTI-WELL PLAN SECTION 10, T1N, R67W



WELL NOTES:

JZM STATE 30N-3HZ

SURFACE: 266' FSL, 820' FWL
BOTTOM HOLE: 50' FNL, 300' FWL

JZM 4N-3HZ

SURFACE: 266' FSL, 835' FWL
BOTTOM HOLE: 50' FNL, 590' FWL

JZM 4C-3HZ

SURFACE: 265' FSL, 865' FWL
BOTTOM HOLE: 50' FNL, 801' FWL

JZM 29N-W3HZ

SURFACE: 265' FSL, 880' FWL
BOTTOM HOLE: 50' FNL, 1200' FWL

WELL PAD - JZM 4N-3HZ

MULTI-WELL PLAN
JZM STATE 30N-3HZ, JZM 4N-3HZ,
JZM 4C-3HZ & JZM 29N-W3HZ
LOCATED IN SECTIONS 3 & 10
T1N, R67W, 6TH P.M.
WELD COUNTY, COLORADO

**Kerr-McGee Oil &
Gas Onshore L.P.**
1099 18th Street
Denver, Colorado 80202



CONSULTING, LLC

SHERIDAN OFFICE
1095 Saberton Avenue
Sheridan, Wyoming 82801
Phone 307-674-0609

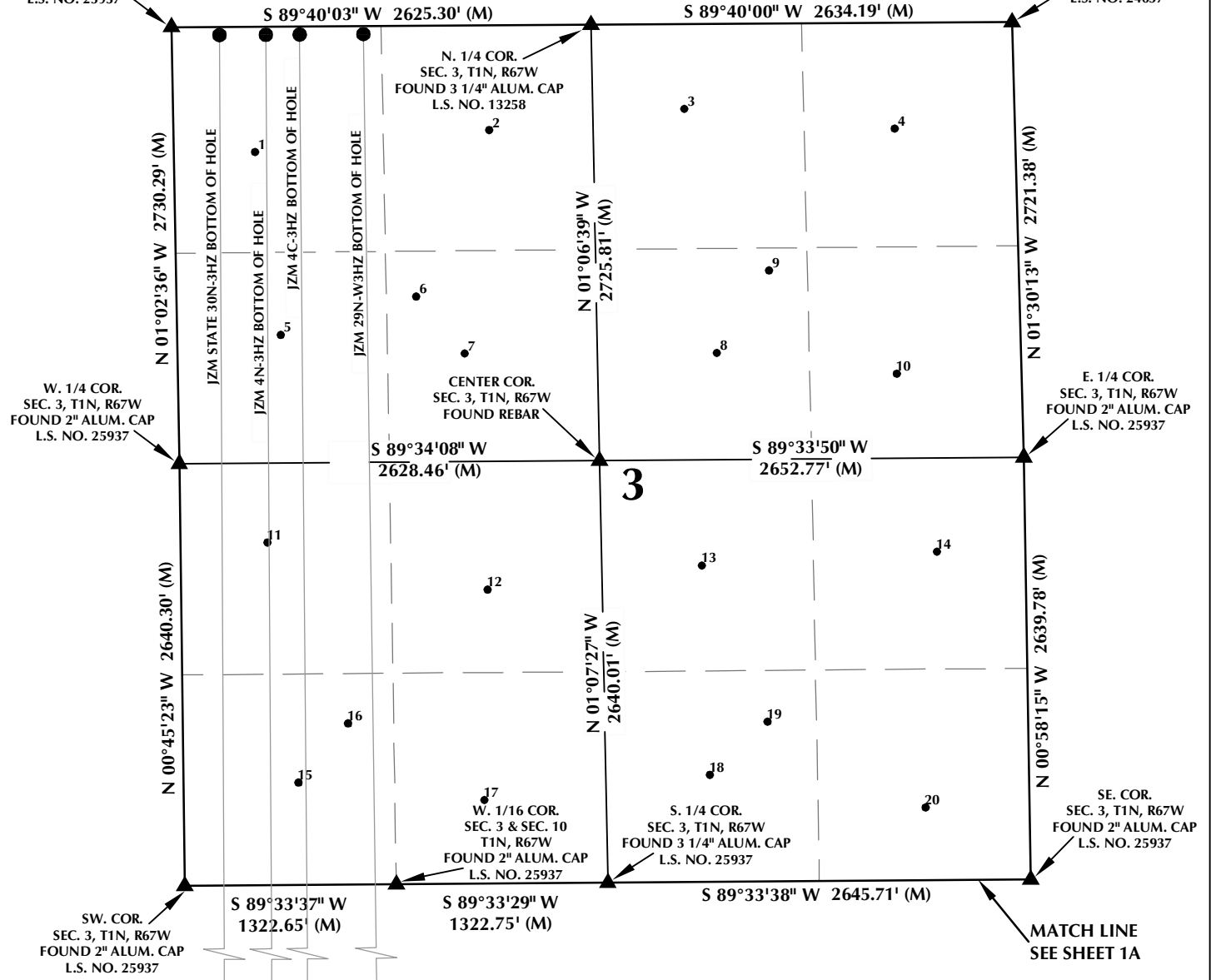
LOVELAND OFFICE
1635 Foxtrail Drive, Suite 204
Loveland, Colorado 80538
Phone 970-776-4331

DRAFTED BY:	LMO	CHECKED BY:	BJR	SHEET NO:
DATE DRAFTED:	8/27/15	DATE SURVEYED:	7/15/15	1A
REVISED:		FILE NAME:	13-39	1A OF 2

MULTI-WELL PLAN SECTION 3, T1N, R67W

NW. COR.
SEC. 3, T1N, R67W
FOUND 2" ALUM. CAP
L.S. NO. 25937

NE. COR.
SEC. 3, T1N, R67W
FOUND 2 1/2" ALUM. CAP
L.S. NO. 24657



WELL NOTES:

JZM STATE 30N-3HZ

SURFACE: 266' FSL, 820' FWL
BOTTOM HOLE: 50' FNL, 300' FWL

JZM 4N-3HZ

SURFACE: 266' FSL, 835' FWL
BOTTOM HOLE: 50' FNL, 590' FWL

JZM 4C-3HZ

SURFACE: 265' FSL, 865' FWL
BOTTOM HOLE: 50' FNL, 801' FWL

JZM 29N-W3HZ

SURFACE: 265' FSL, 880' FWL
BOTTOM HOLE: 50' FNL, 1200' FWL

NOTES:

1. ▲ INDICATES FOUND SECTION CORNER
2. ● INDICATES CALCULATED CORNER
3. BASIS OF BEARING DERIVED FROM COLORADO COORDINATE SYSTEM 1983 NORTH ZONE UNLESS OTHERWISE NOTED.
4. ALL MEASURED DISTANCES ARE GRID.
5. COMBINED SCALE FACTOR: .99972303
6. WELL FOOTAGES ARE MEASURED AT RIGHT ANGLES TO THE SECTION LINES.



WELL PAD - JZM 4N-3HZ

MULTI-WELL PLAN
JZM STATE 30N-3HZ, JZM 4N-3HZ,
JZM 4C-3HZ & JZM 29N-W3HZ
LOCATED IN SECTIONS 3 & 10
T1N, R67W, 6TH P.M.
WELD COUNTY, COLORADO

**Kerr-McGee Oil &
Gas Onshore L.P.**

1099 18th Street
Denver, Colorado 80202



CONSULTING, LLC

SHERIDAN OFFICE
1095 Saberton Avenue
Sheridan, Wyoming 82801
Phone 307-674-0609

LOVELAND OFFICE
1635 Foxtrail Drive, Suite 204
Loveland, Colorado 80538
Phone 970-776-4331

DRAFTED BY:	LMO	CHECKED BY:	BJR	SHEET NO:
DATE DRAFTED:	8/27/15	DATE SURVEYED:	7/15/15	1B
REVISED:		FILE NAME:	13-39	1B OF 2

MULTI-WELL PLAN

SECTION 10, T1N, R67W

NUMBER	WELL NAME	API NUMBER	LATITUDE (NAD 83)	LONGITUDE (NAD 83)	SURFACE ELEVATION	TOTAL DEPTH
1	*SUCKLA-BROWN UNIT 11	05-123-08872	40.070698	-104.883642	5003.0	4850
2	*SUCKLA FARMS INC UNIT F 2	05-123-09838	40.069680	-104.882150	5016.0	8259
3	*SUCKLA-BROWN UNIT 2	05-123-07483	40.070728	-104.879212	5020.0	4850
4	SUCKLA-BROWN UNIT 12	05-123-08873	40.070930	-104.874554	5041.5	4883
5	SUCKLA-BROWN UNIT 1	05-123-07480	40.070952	-104.869777	5049.3	4890
6	*SUCKLA-BROWN UNIT 3	05-123-07472	40.067200	-104.884140	5026.0	4890
7	*ROBERT J BROWN 1	05-123-07466	40.067078	-104.884002	5026.0	4895
8	*SUCKLA BROWN UNIT 9	05-123-08069	40.067108	-104.879292	5042.0	4919
9	*SUCKLA FARMS INJ WELL(EPA) 1	05-123-14291	40.066810	-104.879100	5046.0	9571
10	*SUCKLA BROWN UNIT 4	05-123-07481	40.067138	-104.874522	5081.0	4945
11	SUCKLA FARMS INC F UNIT 1	05-123-07842	40.068168	-104.873375	5082.5	8306
12	SUCKLA-BROWN UNIT 13	05-123-08874	40.067274	-104.869735	5048.8	4916
13	*SUCKLA-BROWN UNIT 14	05-123-08875	40.063598	-104.884012	5047.0	4929
14	*SUCKLA BROWN UNIT 6	05-123-07426	40.063528	-104.879292	5065.0	4910
15	SUCKLA-BROWN UNIT 17	05-123-09485	40.065133	-104.876503	5079.5	5074
16	*SUCKLA BROWN UNIT 10	05-123-08070	40.063618	-104.874512	5054.0	4989
17	FRANK J. SUCKLA 2	05-123-09988	40.061978	-104.871884	5039.1	8260
18	*SUCKLA-BROWN UNIT 5	05-123-07482	40.063628	-104.869972	5030.0	4870
19	SUCKLA-BROWN UNIT NAV 7	05-123-07485	40.060085	-104.883977	5062.2	4860
20	FRANK J SUCKLA 1	05-123-07214	40.060975	-104.882745	5069.0	8259
21	*SUCKLA-BROWN UNIT 15	05-123-08876	40.059988	-104.879302	5046.0	4955
22	SUCKLA-BROWN UNIT 8	05-123-07484	40.060050	-104.874527	5055.6	4899
23	SUCKLA-BROWN UNIT 16	05-123-08877	40.059812	-104.869730	5037.4	4930

NOTES:

- * INDICATES EXISTING WELLS THAT WERE NOT SURVEYED BUT DERIVED FROM COLORADO OIL AND GAS CONSERVATION COMMISSION (COGCC).

**EXISTING WELL EXHIBIT
SECTION 10, T1N, R67W, 6TH P.M.
WELD COUNTY, COLORADO**

**Kerr-McGee Oil &
Gas Onshore L.P.**
1099 18th Street
Denver, Colorado 80202



CONSULTING, LLC

SHERIDAN OFFICE
1095 Saberton Avenue
Sheridan, Wyoming 82801
Phone 307-674-0609

LOVELAND OFFICE
1635 Foxtrail Drive, Suite 204
Loveland, Colorado 80538
Phone 970-776-4331

DRAFTED BY:	LMO	CHECKED BY:	BJR	SHEET NO:
DATE DRAFTED:	8/13/15	DATE SURVEYED:	7/15/15	2A
REVISED:		FILE NAME:	13-39	2A OF 2

MULTI-WELL PLAN SECTION 3, T1N, R67W

NUMBER	WELL NAME	API NUMBER	LATITUDE (NAD 83)	LONGITUDE (NAD 83)	SURFACE ELEVATION	TOTAL DEPTH
1	AUGUST GITTLEIN 2	05-123-08788	40.085369	-104.884617	4983.8	4900
2	AUGUST GITTLEIN 1	05-123-07474	40.085718	-104.879381	4963.7	4788
3	JACK BERGER 3	05-123-08825	40.086058	-104.875015	4956.5	4831
4	JACK BERGER 2	05-123-07538	40.085694	-104.870316	4949.5	4810
5	ELTON N MILLER 1	05-123-07475	40.082226	-104.884071	4971.3	4815
6	UPRR 42 PAN AM UNIT J 2	05-123-10201	40.082866	-104.881039	4967.8	8200
7	ELTON N MILLER 2	05-123-08827	40.081884	-104.879960	4966.6	4819
8	JACK BERGER 1	05-123-07473	40.081866	-104.874326	4956.9	4800
9	JACK BERGER C 1	05-123-08601	40.083272	-104.873146	4954.2	8175
10	JACK BERGER 4	05-123-08826	40.081487	-104.870309	4965.9	4809
11	UPRR 42 PAN AM E 6	05-123-08789	40.078667	-104.884403	4964.7	4805
12	UPRR 42 PAN AM E 2	05-123-07527	40.077829	-104.879488	4980.5	4810
13	*G G HOLLISTER 33-3 1	05-123-08820	40.078216	-104.874693	4991.0	4890
14	*ALEX H MILLER 1-43-3	05-123-07501	40.078428	-104.869432	4997.0	4840
15	*UPRR 42 PAN AM E 1	05-123-07499	40.074538	-104.883742	4990.0	4844
16	*UPRR 42 PAN AM UNIT J 1	05-123-07737	40.075550	-104.882630	4982.0	8224
17	UPRR 42 PAN AM E 5	05-123-08868	40.074222	-104.879593	5003.4	4866
18	UPRR 42 PAN AM E 3	05-123-07528	40.074625	-104.874548	5028.0	4870
19	JACK BERGER GU "C" 2	05-123-10039	40.075528	-104.873248	5017.9	8250
20	UPRR 42 PAN AM E 4	05-123-08996	40.074037	-104.869735	5019.1	4910

NOTES:

- * INDICATES EXISTING WELLS THAT WERE NOT SURVEYED BUT DERIVED FROM COLORADO OIL AND GAS CONSERVATION COMMISSION (COGCC).

**EXISTING WELL EXHIBIT
SECTION 3, T1N, R67W, 6TH P.M.
WELD COUNTY, COLORADO**

**Kerr-McGee Oil &
Gas Onshore L.P.**
1099 18th Street
Denver, Colorado 80202



CONSULTING, LLC

SHERIDAN OFFICE
1095 Saberton Avenue
Sheridan, Wyoming 82801
Phone 307-674-0609

LOVELAND OFFICE
1635 Foxtrail Drive, Suite 204
Loveland, Colorado 80538
Phone 970-776-4331

DRAFTED BY:	LMO	CHECKED BY:	BJR	2B 2B OF 2
DATE DRAFTED:	8/13/15	DATE SURVEYED:	7/15/15	
REVISED:		FILE NAME:	13-39	