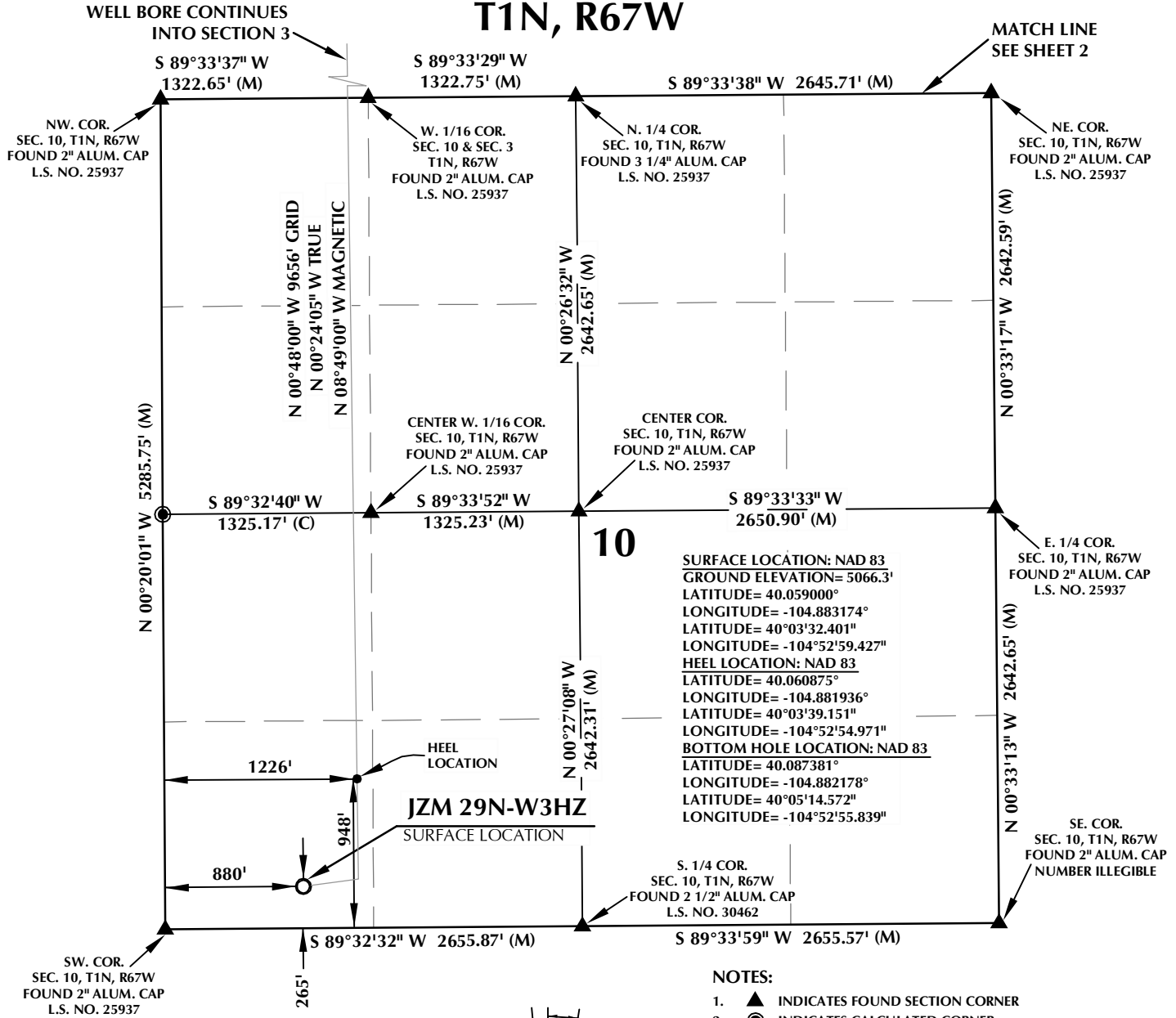


# T1N, R67W



### NOTES:

- ▲ INDICATES FOUND SECTION CORNER
- INDICATES CALCULATED CORNER
- ELEVATION BASED ON NAVD88 (GEOID09)
- BASIS OF BEARING DERIVED FROM COLORADO COORDINATE SYSTEM 1983 NORTH ZONE UNLESS OTHERWISE NOTED.
- ALL MEASURED DISTANCES ARE GRID.  
COMBINED SCALE FACTOR: .99972303
- OPERATOR: ROB WILSON / PDOP = 1.5
- SEE ADDENDUM TO WELL LOCATION CERTIFICATE FOR EXISTING IMPROVEMENTS WITHIN 500' OF THE WELL PAD.
- WELL FOOTAGES ARE MEASURED AT RIGHT ANGLES TO THE SECTION LINES.
- THE BOTTOM OF HOLE BEARS N00°48'00"W 9656' FROM THE HEEL LOCATION.

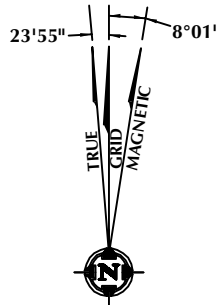
### CERTIFICATE OF SURVEYOR:

THIS IS TO CERTIFY THAT THE ABOVE PLAT WAS PREPARED FROM FIELD NOTES OF ACTUAL SURVEY MADE BY ME OR UNDER MY SUPERVISION AND THAT THE SAME ARE TRUE AND CORRECT TO THE BEST OF MY KNOWLEDGE AND BELIEF. THIS CERTIFICATE DOES NOT REPRESENT A LAND SURVEY PLAT OR IMPROVEMENT SURVEY PLAT AS DEFINED BY C.S. 38-51-102 AND CANNOT BE RELIED UPON TO DETERMINE OWNERSHIP.

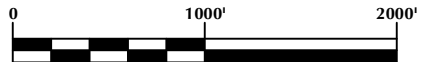
*Benjamin J. Reenders*  
PROFESSIONAL LAND SURVEYOR  
8/27/15

BENJAMIN J. REENDERS  
PROFESSIONAL LAND SURVEYOR  
COLORADO REGISTRATION NUMBER 183305

NOTICE:  
ACCORDING TO COLORADO STATE LAW YOU MUST COMMENCE ANY LEGAL ACTION BASED UPON ANY DEFECT IN THIS SURVEY WITHIN THREE YEARS AFTER YOU FIRST DISCOVER SUCH DEFECT. IN NO EVENT MAY ANY ACTION BASED UPON ANY DEFECT IN THIS SURVEY BE COMMENCED MORE THAN TEN YEARS FROM THE DATE ON THE CERTIFICATION SHOWN HEREON.



NOTE:  
MAGNETIC NORTH IS CURRENT AS OF 8/24/2015.  
MAGNETIC NORTH CHANGES WEST 0°06' PER YEAR.



SCALE: 1" = 1000'

### WELL PAD - JZM 4N-3HZ

JZM 29N-W3HZ  
WELL LOCATION CERTIFICATE  
265' FSL & 880' FWL SWSW (SURFACE)  
948' FSL & 1226' FWL SWSW (HEEL)  
LOCATED IN SECTION 10  
50' FNL & 1200' FWL NWNW (BOTTOM)  
LOCATED IN SECTION 3  
T1N, R67W, 6TH P.M.  
WELD COUNTY, COLORADO

**Kerr-McGee Oil &  
Gas Onshore L.P.**  
1099 18th Street  
Denver, Colorado 80202



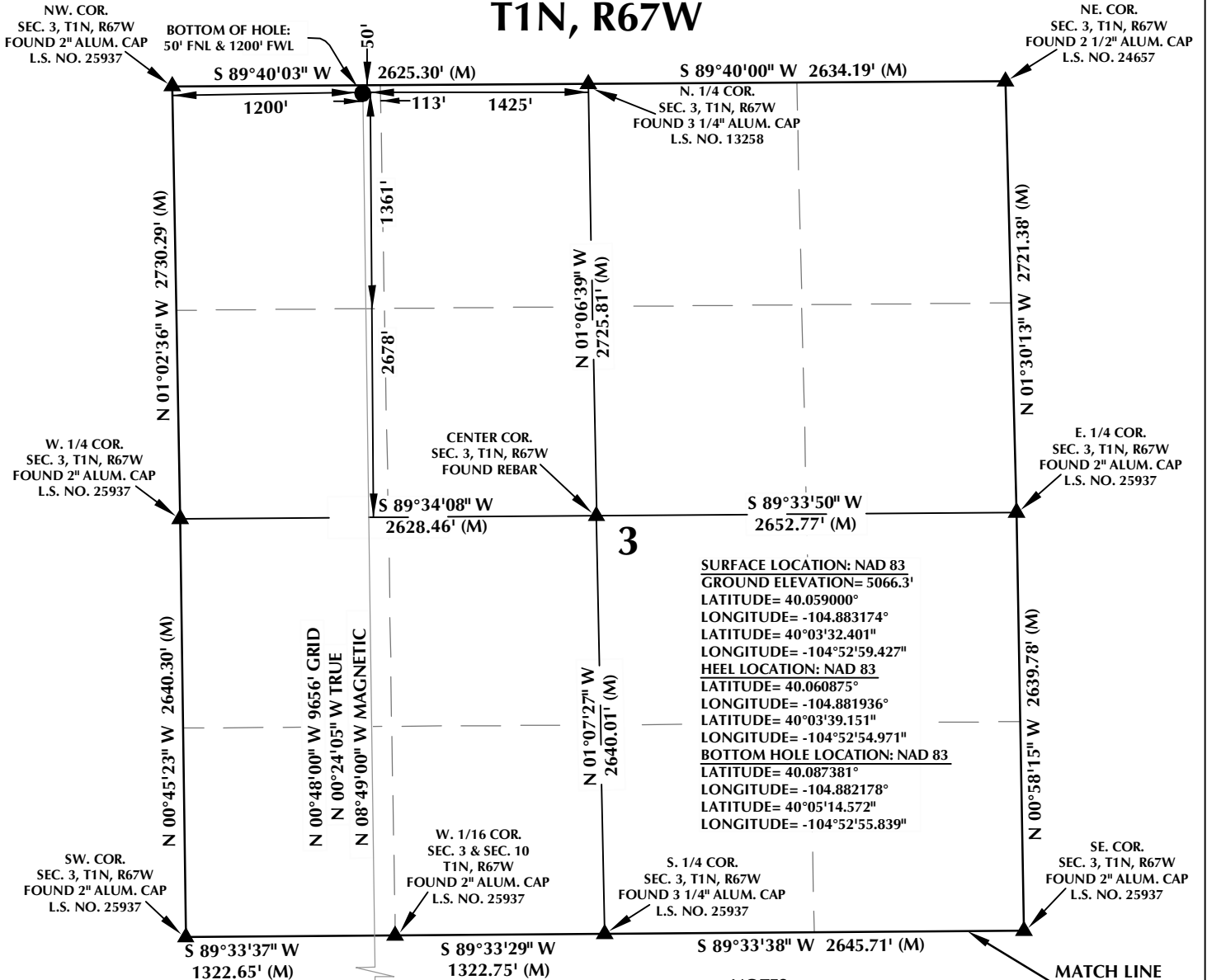
### CONSULTING, LLC

SHERIDAN OFFICE  
1095 Saberton Avenue  
Sheridan, Wyoming 82801  
Phone 307-674-0609

LOVELAND OFFICE  
1635 Foxtrail Drive, Suite 204  
Loveland, Colorado 80538  
Phone 970-776-4331

DRAFTED BY: TJP	CHECKED BY: BJR	SHEET NO: <b>1</b> 1 OF 2
DATE DRAFTED: 8/27/15	DATE SURVEYED: 7/15/15	
REVISED:	FILE NAME: 13-39	

# T1N, R67W



**SURFACE LOCATION: NAD 83**  
 GROUND ELEVATION= 5066.3'  
 LATITUDE= 40.059000°  
 LONGITUDE= -104.883174°  
 LATITUDE= 40°03'32.401\"/>  
 LONGITUDE= -104°52'59.427\"/>  
**HEEL LOCATION: NAD 83**  
 LATITUDE= 40.060875°  
 LONGITUDE= -104.881936°  
 LATITUDE= 40°03'39.151\"/>  
 LONGITUDE= -104°52'54.971\"/>  
**BOTTOM HOLE LOCATION: NAD 83**  
 LATITUDE= 40.087381°  
 LONGITUDE= -104.882178°  
 LATITUDE= 40°05'14.572\"/>  
 LONGITUDE= -104°52'55.839\"/>

**NOTES:**

- ▲ INDICATES FOUND SECTION CORNER
- INDICATES CALCULATED CORNER
- ELEVATION BASED ON NAVD88 (GEOID09)
- BASIS OF BEARING DERIVED FROM COLORADO COORDINATE SYSTEM 1983 NORTH ZONE UNLESS OTHERWISE NOTED.
- ALL MEASURED DISTANCES ARE GRID. COMBINED SCALE FACTOR: .99972303
- OPERATOR: ROB WILSON / PDOP = 1.5
- SEE ADDENDUM TO WELL LOCATION CERTIFICATE FOR EXISTING IMPROVEMENTS WITHIN 500' OF THE WELL PAD.
- WELL FOOTAGES ARE MEASURED AT RIGHT ANGLES TO THE SECTION LINES.
- THE BOTTOM OF HOLE BEARS N00°48'00\"/>

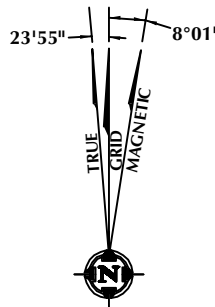
MATCH LINE SEE SHEET 1

**CERTIFICATE OF SURVEYOR:**

THIS IS TO CERTIFY THAT THE ABOVE PLAT WAS PREPARED FROM FIELD NOTES OF ACTUAL SURVEY MADE BY ME OR UNDER MY SUPERVISION AND THAT THE SAME ARE TRUE AND CORRECT TO THE BEST OF MY KNOWLEDGE AND BELIEF. THIS CERTIFICATE DOES NOT REPRESENT A LAND SURVEY PLAT OR IMPROVEMENT SURVEY PLAT AS DEFINED BY C.S. 38-51-102 AND CANNOT BE RELIED UPON TO DETERMINE OWNERSHIP.

*Benjamin J. Reenders*  
 BENJAMIN J. REENDERS  
 PROFESSIONAL LAND SURVEYOR  
 COLORADO REGISTRATION NUMBER 483305

NOTICE: ACCORDING TO COLORADO STATE LAW YOU MUST COMMENCE ANY LEGAL ACTION BASED UPON ANY DEFECT IN THIS SURVEY WITHIN THREE YEARS AFTER YOU FIRST DISCOVER SUCH DEFECT. IN NO EVENT MAY ANY ACTION BASED UPON ANY DEFECT IN THIS SURVEY BE COMMENCED MORE THAN TEN YEARS FROM THE DATE ON THE CERTIFICATION SHOWN HEREON.



NOTE: MAGNETIC NORTH IS CURRENT AS OF 8/24/2015. MAGNETIC NORTH CHANGES WEST 0°06' PER YEAR.



SCALE: 1" = 1000'

**WELL PAD - JZM 4N-3HZ**

JZM 29N-W3HZ  
 WELL LOCATION CERTIFICATE  
 265' FSL & 880' FWL SWSW (SURFACE)  
 948' FSL & 1226' FWL SWSW (HEEL)  
 LOCATED IN SECTION 10  
 50' FNL & 1200' FWL NWNW (BOTTOM)  
 LOCATED IN SECTION 3  
 T1N, R67W, 6TH P.M.  
 WELD COUNTY, COLORADO

**Kerr-McGee Oil & Gas Onshore L.P.**  
 1099 18th Street  
 Denver, Colorado 80202



**CONSULTING, LLC**

**SHERIDAN OFFICE**  
 1095 Saberton Avenue  
 Sheridan, Wyoming 82801  
 Phone 307-674-0609

**LOVELAND OFFICE**  
 1635 Foxtrail Drive, Suite 204  
 Loveland, Colorado 80538  
 Phone 970-776-4331

DRAFTED BY: TJP	CHECKED BY: BJR	SHEET NO: <b>2</b> 2 OF 2
DATE DRAFTED: 8/27/15	DATE SURVEYED: 7/15/15	
REVISED:	FILE NAME: 13-39	