



Kerr-McGee Oil & Gas Onshore LP

A subsidiary of Anadarko Petroleum Corporation

1099 18th Street
Denver, CO 80202
720-929-6000

November 9, 2015

Matt Lepore
Director, Colorado Oil and Gas Conservation Commission
Department of Natural Resources
The Chancery Building
1120 Lincoln Street, Suite 801
Denver, CO 80203

Re: **30 Day Certification Letter - 318A.e**
JZM 4N-3HZ (Doc #400906176)
Township 1 North, Range 67 West
Section 10: SW/4SW/4
Unit Acreage: 360
Unit Spacing: 01N-67W-Sec 03 W/2W/2
01N-67W-Sec 10 W/2W/2
02N-67W-Sec 34 SW/4SW/4
Weld County, Colorado

Dear Director Lepore:

Kerr McGee Oil and Gas Onshore LP (“KMG”) hereby certifies that KMG owns one hundred percent (100%) of the leasehold interest in the mineral rights in the proposed spacing unit. KMG hereby respectfully requests approval of this boundary well.

If you have any questions or issues regarding this permit, please contact Cheryl Light at (720) 929-6461.

Very truly yours,

KERR-McGEE OIL AND GAS ONSHORE LP

A handwritten signature in blue ink that reads "Cheryl Light".

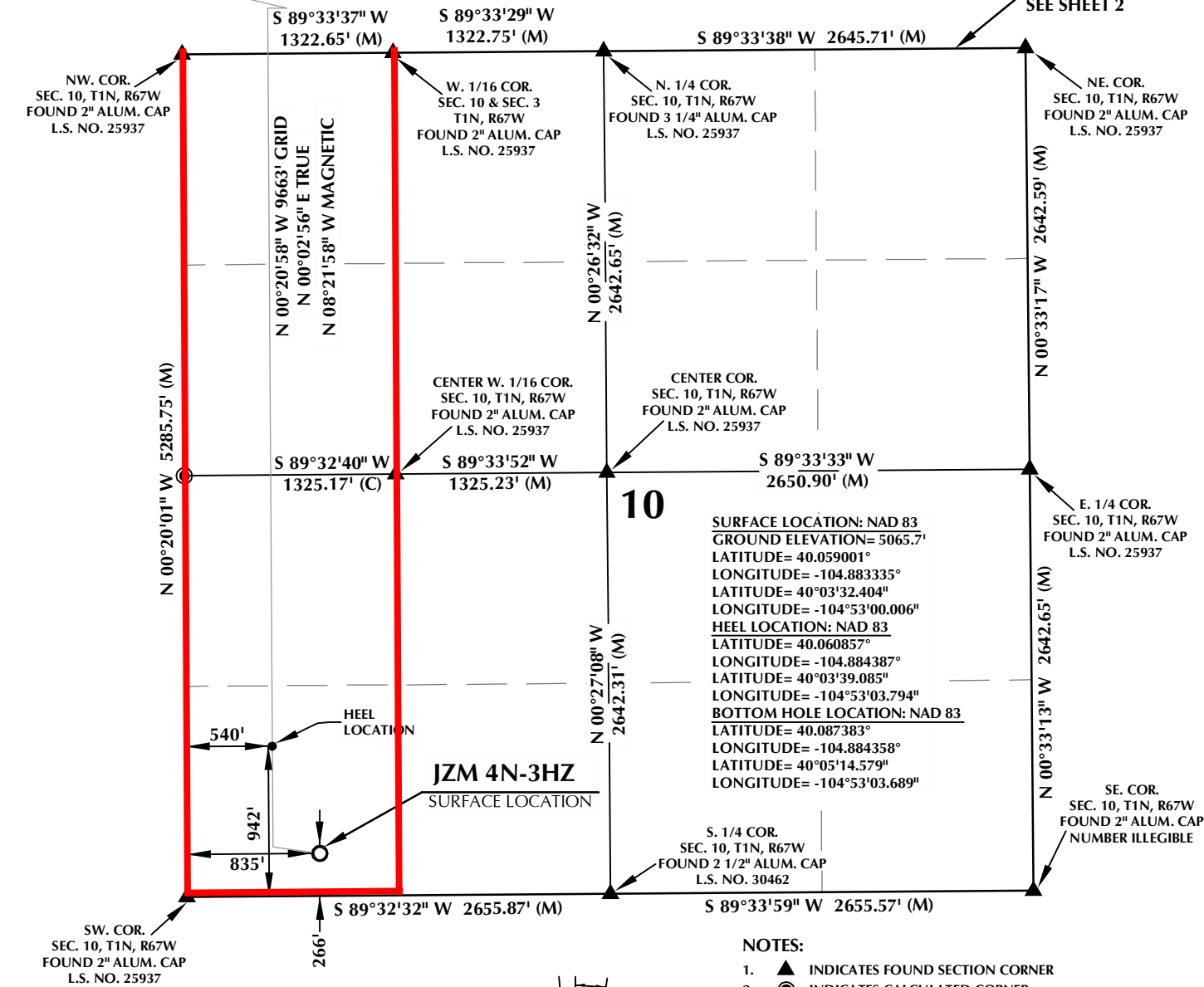
Cheryl Light
Senior Regulatory Analyst

PROPOSED SPACING UNIT

T1N, R67W

WELL BORE CONTINUES INTO SECTION 3

MATCH LINE SEE SHEET 2



10

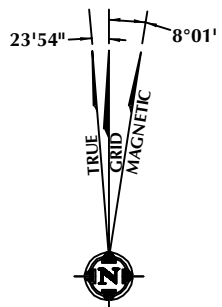
SURFACE LOCATION: NAD 83
 GROUND ELEVATION= 5065.7'
 LATITUDE= 40.059001°
 LONGITUDE= -104.883335°
 HEEL LOCATION: NAD 83
 LATITUDE= 40.060857°
 LONGITUDE= -104.884387°
 BOTTOM HOLE LOCATION: NAD 83
 LATITUDE= 40.087383°
 LONGITUDE= -104.884358°
 LATITUDE= 40°05'14.579"
 LONGITUDE= -104°53'03.689"

- NOTES:**
- ▲ INDICATES FOUND SECTION CORNER
 - INDICATES CALCULATED CORNER
 - ELEVATION BASED ON NAVD88 (GEOID09)
 - BASIS OF BEARING DERIVED FROM COLORADO COORDINATE SYSTEM 1983 NORTH ZONE UNLESS OTHERWISE NOTED.
 - ALL MEASURED DISTANCES ARE GRID. COMBINED SCALE FACTOR: .99972303
 - OPERATOR: ROB WILSON / PDOP = 1.4
 - SEE ADDENDUM TO WELL LOCATION CERTIFICATE FOR EXISTING IMPROVEMENTS WITHIN 500' OF THE WELL PAD.
 - WELL FOOTAGES ARE MEASURED AT RIGHT ANGLES TO THE SECTION LINES.
 - THE BOTTOM OF HOLE BEARS N00°20'58"W 9663' FROM THE HEEL LOCATION.

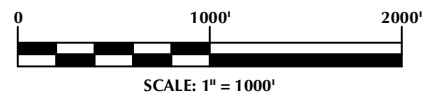
CERTIFICATE OF SURVEYOR:

THIS IS TO CERTIFY THAT THE ABOVE PLAT WAS PREPARED FROM FIELD NOTES OF ACTUAL SURVEY MADE BY ME OR UNDER MY SUPERVISION AND THAT THE SAME ARE TRUE AND CORRECT TO THE BEST OF MY KNOWLEDGE AND BELIEF. THIS CERTIFICATE DOES NOT REPRESENT A LAND SURVEY PLAT OR IMPROVEMENT SURVEY PLAT AS DEFINED BY C.S. 38-51-102 AND CANNOT BE RELIED UPON TO DETERMINE OWNERSHIP.

Benjamin J. Reenders
 BENJAMIN J. REENDERS
 PROFESSIONAL LAND SURVEYOR
 COLORADO REGISTRATION NUMBER 183305



NOTE: MAGNETIC NORTH IS CURRENT AS OF 8/24/2015. MAGNETIC NORTH CHANGES WEST 0°06' PER YEAR.



WELL PAD - JZM 4N-3HZ

JZM 4N-3HZ
 WELL LOCATION CERTIFICATE
 266' FSL & 835' FWL SWSW (SURFACE)
 942' FSL & 540' FWL SWSW (HEEL)
 LOCATED IN SECTION 10
 50' FNL & 590' FWL NWNW (BOTTOM)
 LOCATED IN SECTION 3
 T1N, R67W, 6TH P.M.
 WELD COUNTY, COLORADO

Kerr-McGee Oil & Gas Onshore L.P.
 1099 18th Street
 Denver, Colorado 80202

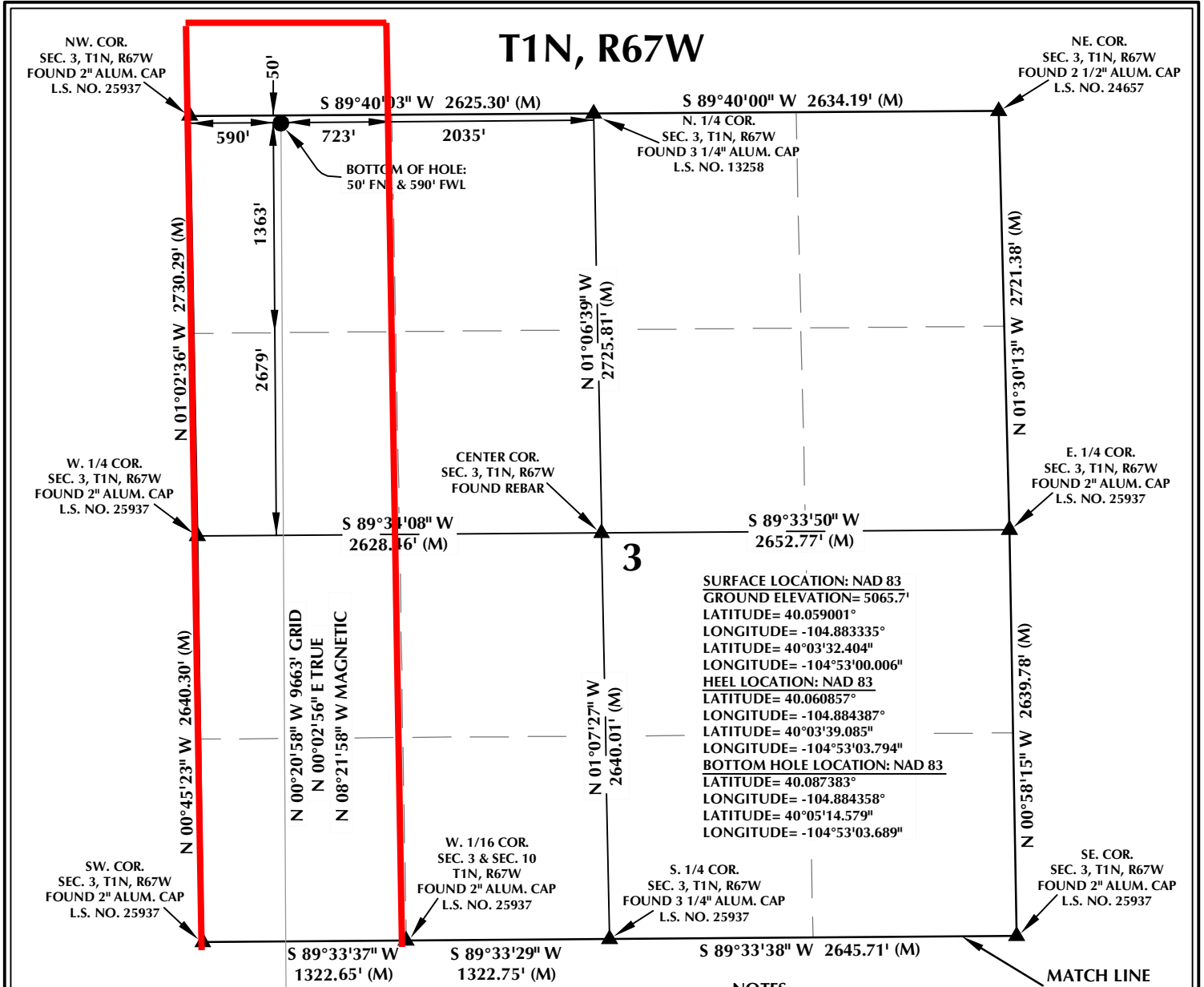


CONSULTING, LLC
 SHERIDAN OFFICE: 1095 Saberton Avenue, Sheridan, Wyoming 82801, Phone 307-674-0609
 LOVELAND OFFICE: 1635 Foxtrail Drive, Suite 204, Loveland, Colorado 80538, Phone 970-776-4331

DRAFTED BY: TJP	CHECKED BY: BJR	SHEET NO: 1 1 OF 2
DATE DRAFTED: 8/27/15	DATE SURVEYED: 7/15/15	
REVISED:	FILE NAME: 13-39	

PROPOSED SPACING UNIT

T1N, R67W



3

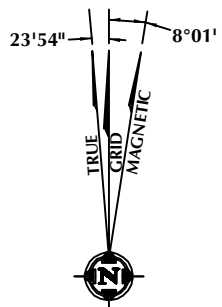
SURFACE LOCATION: NAD 83
 GROUND ELEVATION= 5065.7'
 LATITUDE= 40.059001°
 LONGITUDE= -104.883335°
HEEL LOCATION: NAD 83
 LATITUDE= 40.060857°
 LONGITUDE= -104.884387°
BOTTOM HOLE LOCATION: NAD 83
 LATITUDE= 40.087383°
 LONGITUDE= -104.884358°
 LONGITUDE= -104°53'03.689"

- NOTES:**
- ▲ INDICATES FOUND SECTION CORNER
 - INDICATES CALCULATED CORNER
 - ELEVATION BASED ON NAVD88 (GEOID09)
 - BASIS OF BEARING DERIVED FROM COLORADO COORDINATE SYSTEM 1983 NORTH ZONE UNLESS OTHERWISE NOTED.
 - ALL MEASURED DISTANCES ARE GRID. COMBINED SCALE FACTOR: .99972303
 - OPERATOR: ROB WILSON / PDOP = 1.4
 - SEE ADDENDUM TO WELL LOCATION CERTIFICATE FOR EXISTING IMPROVEMENTS WITHIN 500' OF THE WELL PAD.
 - WELL FOOTAGES ARE MEASURED AT RIGHT ANGLES TO THE SECTION LINES.
 - THE BOTTOM OF HOLE BEARS N00°20'58"W 9663' FROM THE HEEL LOCATION.

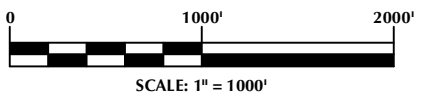
CERTIFICATE OF SURVEYOR:

THIS IS TO CERTIFY THAT THE ABOVE PLAT WAS PREPARED FROM FIELD NOTES OF ACTUAL SURVEY MADE BY ME OR UNDER MY SUPERVISION AND THAT THE SAME ARE TRUE AND CORRECT TO THE BEST OF MY KNOWLEDGE AND BELIEF. THIS CERTIFICATE DOES NOT REPRESENT A LAND SURVEY PLAT OR IMPROVEMENT SURVEY PLAT AS DEFINED BY C.S. 38-51-102 AND CANNOT BE RELIED UPON TO DETERMINE OWNERSHIP.

Benjamin J. Reenders
 BENJAMIN J. REENDERS
 PROFESSIONAL LAND SURVEYOR
 COLORADO REGISTRATION NUMBER 183305



NOTE:
 MAGNETIC NORTH IS CURRENT AS OF 8/24/2015.
 MAGNETIC NORTH CHANGES WEST 0°06' PER YEAR.



WELL PAD - JZM 4N-3HZ

JZM 4N-3HZ
WELL LOCATION CERTIFICATE
 266' FSL & 835' FWL SWSW (SURFACE)
 942' FSL & 540' FWL SWSW (HEEL)
 LOCATED IN SECTION 10
 50' FNL & 590' FWL NWNW (BOTTOM)
 LOCATED IN SECTION 3
 T1N, R67W, 6TH P.M.
 WELD COUNTY, COLORADO

Kerr-McGee Oil & Gas Onshore L.P.
 1099 18th Street
 Denver, Colorado 80202



CONSULTING, LLC

SHERIDAN OFFICE
 1095 Saberton Avenue
 Sheridan, Wyoming 82801
 Phone 307-674-0609

LOVELAND OFFICE
 1635 Foxtrail Drive, Suite 204
 Loveland, Colorado 80538
 Phone 970-776-4331

DRAFTED BY: TJP	CHECKED BY: BJR	SHEET NO: 2 2 OF 2
DATE DRAFTED: 8/27/15	DATE SURVEYED: 7/15/15	
REVISED:	FILE NAME: 13-39	

K:\ADARKO\2013\2013_39_WATTENBERG_T1_R67_SEC_10\PLATS\JZM_4N-3HZ\PLATS\JZM_4N-3HZ_PLAT.dwg 8/27/2015 4:31:57 PM, lba