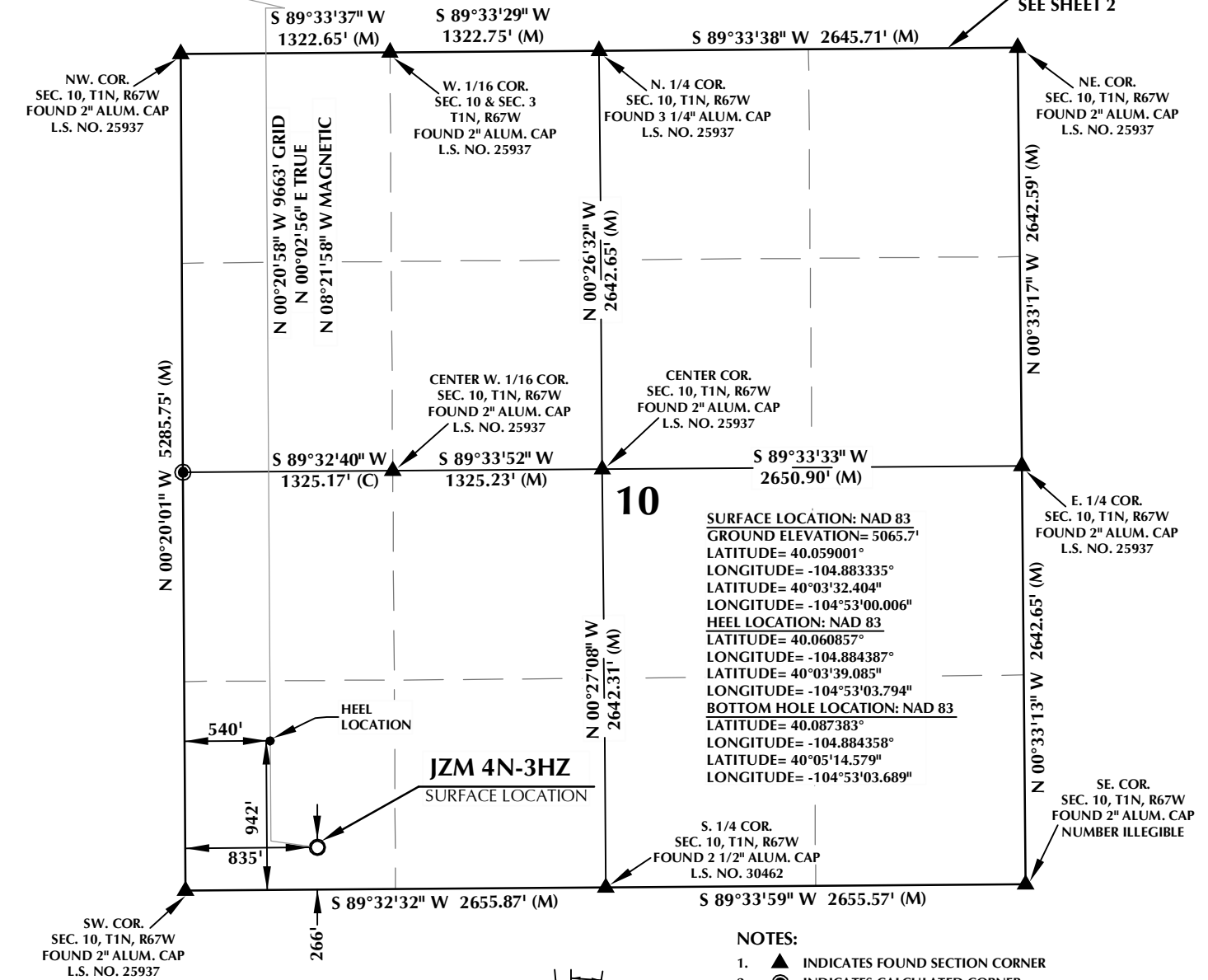


WELL BORE CONTINUES INTO SECTION 3

T1N, R67W

MATCH LINE SEE SHEET 2



10

SURFACE LOCATION: NAD 83
 GROUND ELEVATION= 5065.7'
 LATITUDE= 40.059001°
 LONGITUDE= -104.883335°
 HEEL LOCATION: NAD 83
 LATITUDE= 40.060857°
 LONGITUDE= -104.884387°
 BOTTOM HOLE LOCATION: NAD 83
 LATITUDE= 40.087383°
 LONGITUDE= -104.884358°

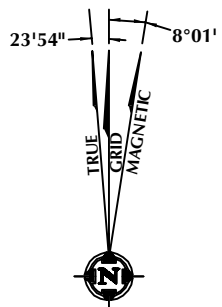
NOTES:

- ▲ INDICATES FOUND SECTION CORNER
- INDICATES CALCULATED CORNER
- ELEVATION BASED ON NAVD88 (GEOID09)
- BASIS OF BEARING DERIVED FROM COLORADO COORDINATE SYSTEM 1983 NORTH ZONE UNLESS OTHERWISE NOTED.
- ALL MEASURED DISTANCES ARE GRID. COMBINED SCALE FACTOR: .99972303
- OPERATOR: ROB WILSON / PDOP = 1.4
- SEE ADDENDUM TO WELL LOCATION CERTIFICATE FOR EXISTING IMPROVEMENTS WITHIN 500' OF THE WELL PAD.
- WELL FOOTAGES ARE MEASURED AT RIGHT ANGLES TO THE SECTION LINES.
- THE BOTTOM OF HOLE BEARS N00°20'58"W 9663' FROM THE HEEL LOCATION.

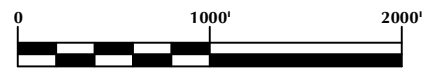
CERTIFICATE OF SURVEYOR:

THIS IS TO CERTIFY THAT THE ABOVE PLAT WAS PREPARED FROM FIELD NOTES OF ACTUAL SURVEY MADE BY ME OR UNDER MY SUPERVISION AND THAT THE SAME ARE TRUE AND CORRECT TO THE BEST OF MY KNOWLEDGE AND BELIEF. THIS CERTIFICATE DOES NOT REPRESENT A LAND SURVEY PLAT OR IMPROVEMENT SURVEY PLAT AS DEFINED BY C.S. 38-51-102 AND CANNOT BE RELIED UPON TO DETERMINE OWNERSHIP.

Benjamin J. Reenders
 BENJAMIN J. REENDERS
 PROFESSIONAL LAND SURVEYOR
 COLORADO REGISTRATION NUMBER 183305



NOTE: MAGNETIC NORTH IS CURRENT AS OF 8/24/2015. MAGNETIC NORTH CHANGES WEST 0°06' PER YEAR.



SCALE: 1" = 1000'

WELL PAD - JZM 4N-3HZ

JZM 4N-3HZ
 WELL LOCATION CERTIFICATE
 266' FSL & 835' FWL SWSW (SURFACE)
 942' FSL & 540' FWL SWSW (HEEL)
 LOCATED IN SECTION 10
 50' FNL & 590' FWL NWNW (BOTTOM)
 LOCATED IN SECTION 3
 T1N, R67W, 6TH P.M.
 WELD COUNTY, COLORADO

Kerr-McGee Oil & Gas Onshore L.P.
 1099 18th Street
 Denver, Colorado 80202

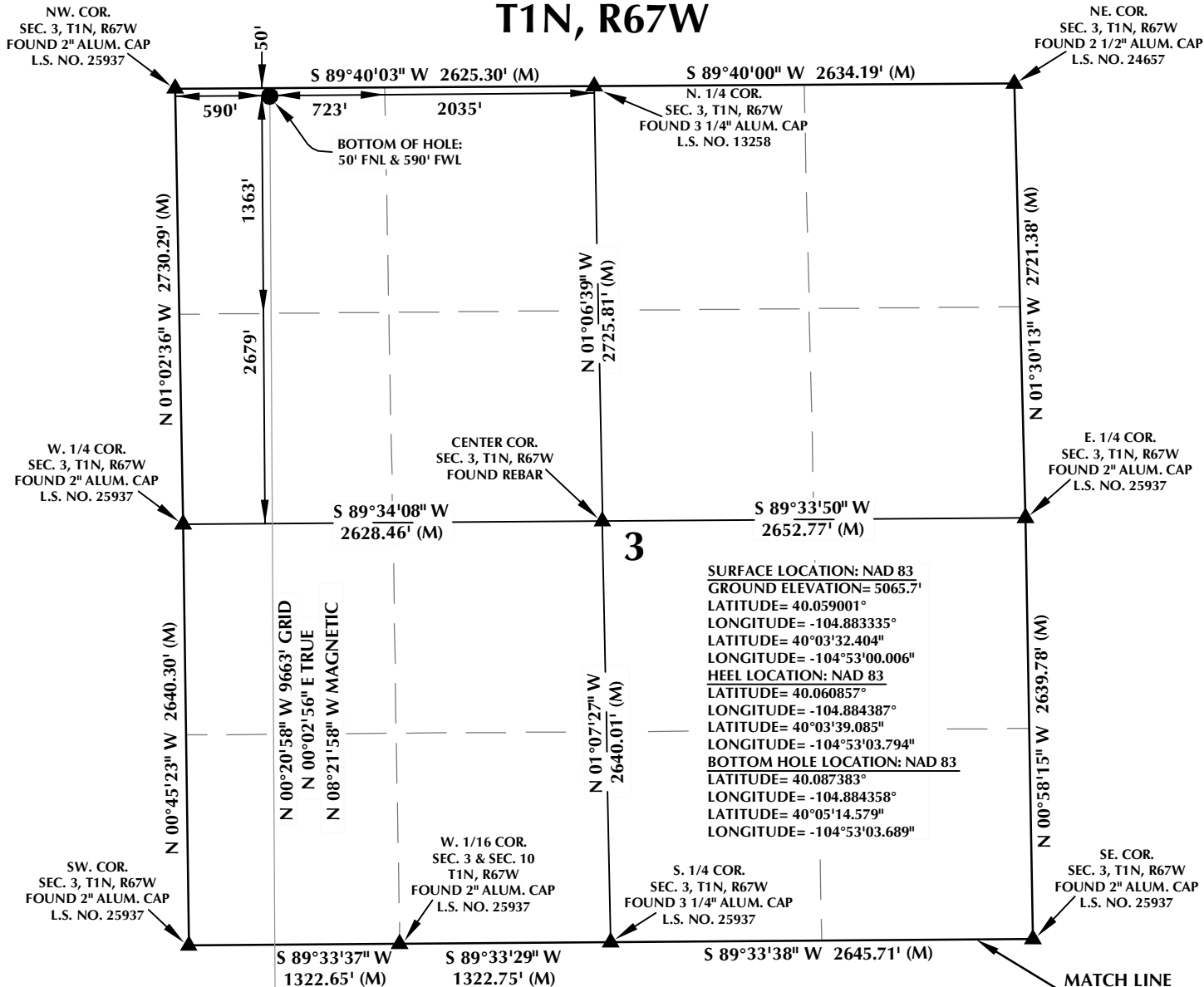


CONSULTING, LLC

SHERIDAN OFFICE 1095 Saberton Avenue Sheridan, Wyoming 82801 Phone 307-674-0609
 LOVELAND OFFICE 1635 Foxtrail Drive, Suite 204 Loveland, Colorado 80538 Phone 970-776-4331

DRAFTED BY: TJP	CHECKED BY: BJR	SHEET NO: 1 1 OF 2
DATE DRAFTED: 8/27/15	DATE SURVEYED: 7/15/15	
REVISED:	FILE NAME: 13-39	

T1N, R67W



3

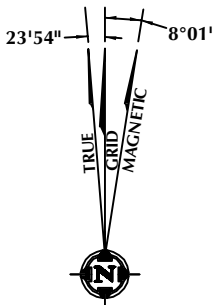
SURFACE LOCATION: NAD 83
 GROUND ELEVATION= 5065.7'
 LATITUDE= 40.059001°
 LONGITUDE= -104.883335°
 HEEL LOCATION: NAD 83
 LATITUDE= 40.060857°
 LONGITUDE= -104.884387°
 BOTTOM HOLE LOCATION: NAD 83
 LATITUDE= 40.087383°
 LONGITUDE= -104.884358°
 LONGITUDE= -104°53'03.689"

CERTIFICATE OF SURVEYOR:

THIS IS TO CERTIFY THAT THE ABOVE PLAT WAS PREPARED FROM FIELD NOTES OF ACTUAL SURVEY MADE BY ME OR UNDER MY SUPERVISION AND THAT THE SAME ARE TRUE AND CORRECT TO THE BEST OF MY KNOWLEDGE AND BELIEF. THIS CERTIFICATE DOES NOT REPRESENT A LAND SURVEY PLAT OR IMPROVEMENT SURVEY PLAT AS DEFINED BY C.S. 38-51-102 AND CANNOT BE RELIED UPON TO DETERMINE OWNERSHIP.

Benjamin J. Reenders
 BENJAMIN J. REENDERS
 PROFESSIONAL LAND SURVEYOR
 COLORADO REGISTRATION NUMBER 483305

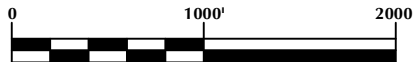
NOTICE: ACCORDING TO COLORADO STATE LAW YOU MUST COMMENCE ANY LEGAL ACTION BASED UPON ANY DEFECT IN THIS SURVEY WITHIN THREE YEARS AFTER YOU FIRST DISCOVER SUCH DEFECT. IN NO EVENT MAY ANY ACTION BASED UPON ANY DEFECT IN THIS SURVEY BE COMMENCED MORE THAN TEN YEARS FROM THE DATE ON THE CERTIFICATION SHOWN HEREON.



NOTE: MAGNETIC NORTH IS CURRENT AS OF 8/24/2015. MAGNETIC NORTH CHANGES WEST 0°06' PER YEAR.

NOTES:

- ▲ INDICATES FOUND SECTION CORNER
- INDICATES CALCULATED CORNER
- ELEVATION BASED ON NAVD88 (GEOID09)
- BASIS OF BEARING DERIVED FROM COLORADO COORDINATE SYSTEM 1983 NORTH ZONE UNLESS OTHERWISE NOTED.
- ALL MEASURED DISTANCES ARE GRID. COMBINED SCALE FACTOR: .99972303
- OPERATOR: ROB WILSON / PDOP = 1.4
- SEE ADDENDUM TO WELL LOCATION CERTIFICATE FOR EXISTING IMPROVEMENTS WITHIN 500' OF THE WELL PAD.
- WELL FOOTAGES ARE MEASURED AT RIGHT ANGLES TO THE SECTION LINES.
- THE BOTTOM OF HOLE BEARS N00°20'58"W 9663' FROM THE HEEL LOCATION.



SCALE: 1" = 1000'

WELL PAD - JZM 4N-3HZ

JZM 4N-3HZ
 WELL LOCATION CERTIFICATE
 266' FSL & 835' FWL SWSW (SURFACE)
 942' FSL & 540' FWL SWSW (HEEL)
 LOCATED IN SECTION 10
 50' FNL & 590' FWL NWNW (BOTTOM)
 LOCATED IN SECTION 3
 T1N, R67W, 6TH P.M.
 WELD COUNTY, COLORADO

**Kerr-McGee Oil &
 Gas Onshore L.P.**
 1099 18th Street
 Denver, Colorado 80202



CONSULTING, LLC

SHERIDAN OFFICE 1095 Saberton Avenue Sheridan, Wyoming 82801 Phone 307-674-0609
 LOVELAND OFFICE 1635 Foxtrail Drive, Suite 204 Loveland, Colorado 80538 Phone 970-776-4331

DRAFTED BY: TJP	CHECKED BY: BJR	SHEET NO: 2 2 OF 2
DATE DRAFTED: 8/27/15	DATE SURVEYED: 7/15/15	
REVISED:	FILE NAME: 13-39	