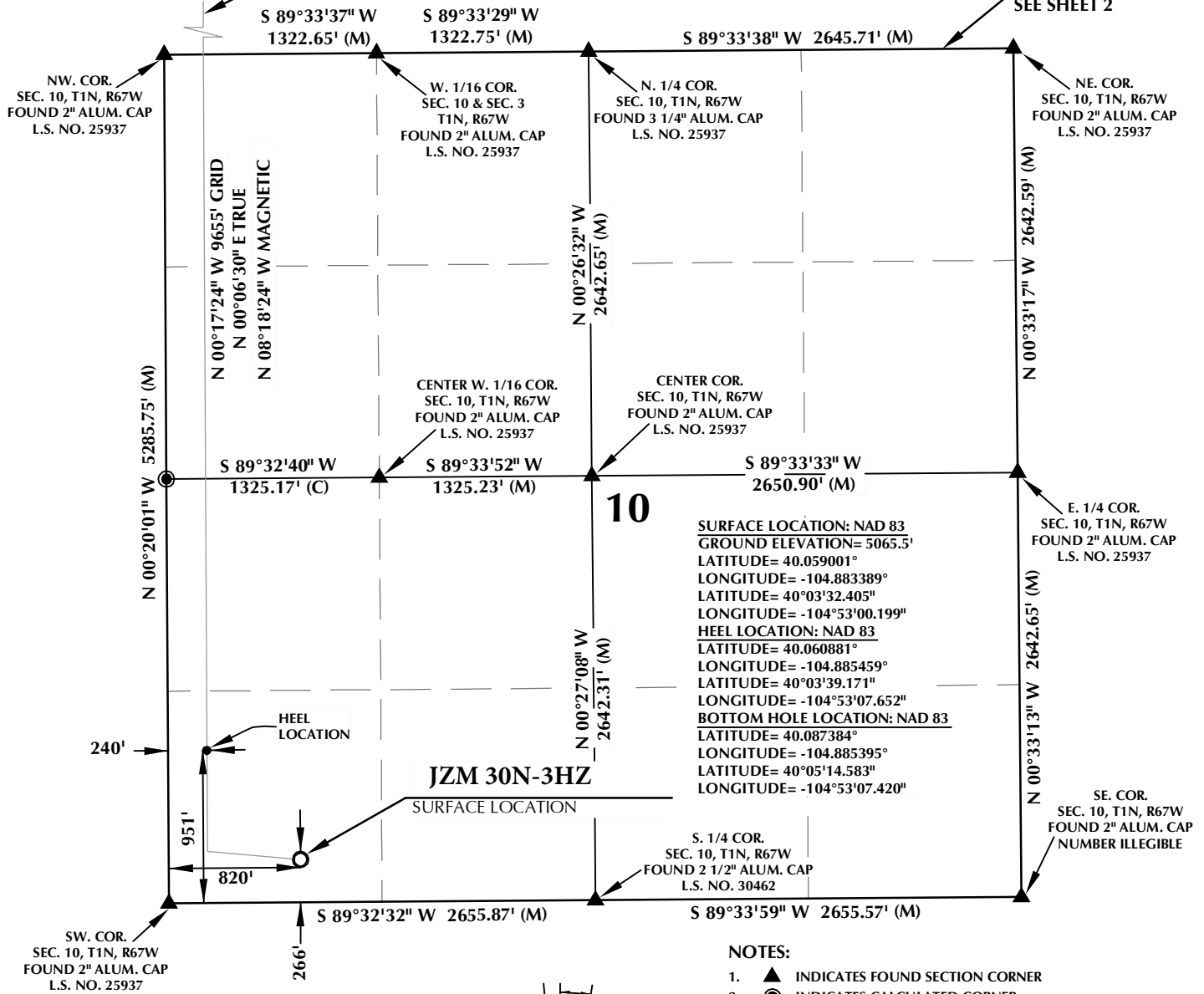


WELL BORE CONTINUES INTO SECTION 3 **T1N, R67W**

MATCH LINE SEE SHEET 2



SURFACE LOCATION: NAD 83
 GROUND ELEVATION= 5065.5'
 LATITUDE= 40.059001°
 LONGITUDE= -104.883389°
HEEL LOCATION: NAD 83
 LATITUDE= 40.060881°
 LONGITUDE= -104.885459°
BOTTOM HOLE LOCATION: NAD 83
 LATITUDE= 40.087384°
 LONGITUDE= -104.885395°
 LATITUDE= 40°05'14.583"
 LONGITUDE= -104°53'07.420"

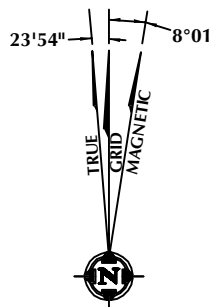
- NOTES:**
- ▲ INDICATES FOUND SECTION CORNER
 - INDICATES CALCULATED CORNER
 - ELEVATION BASED ON NAVD88 (GEOID09)
 - BASIS OF BEARING DERIVED FROM COLORADO COORDINATE SYSTEM 1983 NORTH ZONE UNLESS OTHERWISE NOTED.
 - ALL MEASURED DISTANCES ARE GRID. COMBINED SCALE FACTOR: .99972303
 - OPERATOR: ROB WILSON / PDOP = 1.4
 - SEE ADDENDUM TO WELL LOCATION CERTIFICATE FOR EXISTING IMPROVEMENTS WITHIN 500' OF THE WELL PAD.
 - WELL FOOTAGES ARE MEASURED AT RIGHT ANGLES TO THE SECTION LINES.
 - THE BOTTOM OF HOLE BEARS N00°17'24"W 9655' FROM THE HEEL LOCATION.

CERTIFICATE OF SURVEYOR:

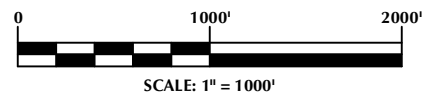
THIS IS TO CERTIFY THAT THE ABOVE PLAT WAS PREPARED FROM FIELD NOTES OF ACTUAL SURVEY MADE BY ME OR UNDER MY SUPERVISION AND THAT THE SAME ARE TRUE AND CORRECT TO THE BEST OF MY KNOWLEDGE AND BELIEF. THIS CERTIFICATE DOES NOT REPRESENT A LAND SURVEY PLAT OR IMPROVEMENT SURVEY PLAT AS DEFINED BY C.S. 38-51-102 AND CANNOT BE RELIED UPON TO DETERMINE OWNERSHIP.

Benjamin J. Reenders
 BENJAMIN J. REENDERS
 PROFESSIONAL LAND SURVEYOR
 COLORADO REGISTRATION NUMBER 433305

NOTICE: ACCORDING TO COLORADO STATE LAW YOU MUST COMMENCE ANY LEGAL ACTION BASED UPON ANY DEFECT IN THIS SURVEY WITHIN THREE YEARS AFTER YOU FIRST DISCOVER SUCH DEFECT. IN NO EVENT MAY ANY ACTION BASED UPON ANY DEFECT IN THIS SURVEY BE COMMENCED MORE THAN TEN YEARS FROM THE DATE ON THE CERTIFICATION SHOWN HEREON.



NOTE: MAGNETIC NORTH IS CURRENT AS OF 8/24/2015. MAGNETIC NORTH CHANGES WEST 0°06' PER YEAR.



WELL PAD - JZM 4N-3HZ

JZM 30N-3HZ
 WELL LOCATION CERTIFICATE
 266' FSL & 820' FWL SWSW (SURFACE)
 951' FSL & 240' FWL SWSW (HEEL)
 LOCATED IN SECTION 10
 50' FNL & 300' FWL NWNW (BOTTOM)
 LOCATED IN SECTION 3
 T1N, R67W, 6TH P.M.
 WELD COUNTY, COLORADO

Kerr-McGee Oil & Gas Onshore L.P.
 1099 18th Street
 Denver, Colorado 80202



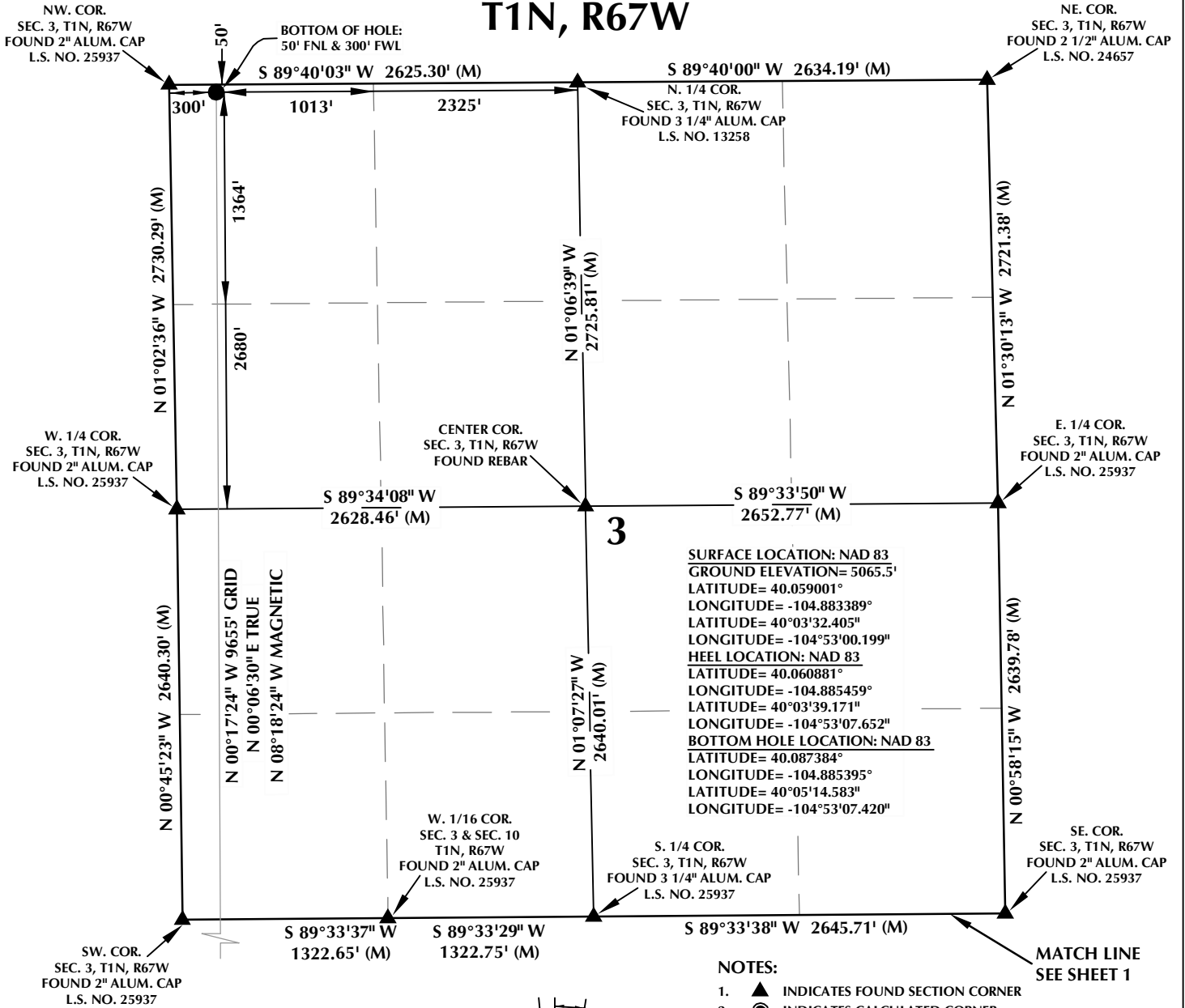
CONSULTING, LLC

SHERIDAN OFFICE
 1095 Saberton Avenue
 Sheridan, Wyoming 82801
 Phone 307-674-0609

LOVELAND OFFICE
 1635 Foxtrail Drive, Suite 204
 Loveland, Colorado 80538
 Phone 970-776-4331

DRAFTED BY: TJP	CHECKED BY: BJR	SHEET NO: 1 1 OF 2
DATE DRAFTED: 8/27/15	DATE SURVEYED: 7/15/15	
REVISED:	FILE NAME: 13-39	

T1N, R67W



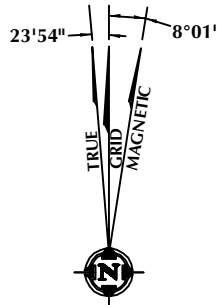
SURFACE LOCATION: NAD 83
 GROUND ELEVATION= 5065.5'
 LATITUDE= 40.059001°
 LONGITUDE= -104.883389°
HEEL LOCATION: NAD 83
 LATITUDE= 40.060881°
 LONGITUDE= -104.885459°
BOTTOM HOLE LOCATION: NAD 83
 LATITUDE= 40.087384°
 LONGITUDE= -104.885395°
 LONGITUDE= -104°53'07.420"

CERTIFICATE OF SURVEYOR:

THIS IS TO CERTIFY THAT THE ABOVE PLAT WAS PREPARED FROM FIELD NOTES OF ACTUAL SURVEY MADE BY ME OR UNDER MY SUPERVISION AND THAT THE SAME ARE TRUE AND CORRECT TO THE BEST OF MY KNOWLEDGE AND BELIEF. THIS CERTIFICATE DOES NOT REPRESENT A LAND SURVEY PLAT OR IMPROVEMENT SURVEY PLAT AS DEFINED BY C.S. 38-51-102 AND CANNOT BE RELIED UPON TO DETERMINE OWNERSHIP.

Benjamin J. Reenders
 BENJAMIN J. REENDERS
 PROFESSIONAL LAND SURVEYOR
 COLORADO REGISTRATION NUMBER 48323

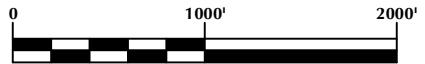
NOTICE:
 ACCORDING TO COLORADO STATE LAW YOU MUST COMMENCE ANY LEGAL ACTION BASED UPON ANY DEFECT IN THIS SURVEY WITHIN THREE YEARS AFTER YOU FIRST DISCOVER SUCH DEFECT. IN NO EVENT MAY ANY ACTION BASED UPON ANY DEFECT IN THIS SURVEY BE COMMENCED MORE THAN TEN YEARS FROM THE DATE ON THE CERTIFICATION SHOWN HEREON.



NOTE:
 MAGNETIC NORTH IS CURRENT AS OF 8/24/2015.
 MAGNETIC NORTH CHANGES WEST 0°06' PER YEAR.

NOTES:

- ▲ INDICATES FOUND SECTION CORNER
- INDICATES CALCULATED CORNER
- ELEVATION BASED ON NAVD88 (GEOID09)
- BASIS OF BEARING DERIVED FROM COLORADO COORDINATE SYSTEM 1983 NORTH ZONE UNLESS OTHERWISE NOTED.
- ALL MEASURED DISTANCES ARE GRID. COMBINED SCALE FACTOR: .99972303
- OPERATOR: ROB WILSON / PDOP = 1.4
- SEE ADDENDUM TO WELL LOCATION CERTIFICATE FOR EXISTING IMPROVEMENTS WITHIN 500' OF THE WELL PAD.
- WELL FOOTAGES ARE MEASURED AT RIGHT ANGLES TO THE SECTION LINES.
- THE BOTTOM OF HOLE BEARS N00°17'24"W 9655' FROM THE HEEL LOCATION.



SCALE: 1" = 1000'

WELL PAD - JZM 4N-3HZ

JZM 30N-3HZ
 WELL LOCATION CERTIFICATE
 266' FSL & 820' FWL SWSW (SURFACE)
 951' FSL & 240' FWL SWSW (HEEL)
 LOCATED IN SECTION 10
 50' FNL & 300' FWL NWNW (BOTTOM)
 LOCATED IN SECTION 3
 T1N, R67W, 6TH P.M.
 WELD COUNTY, COLORADO

**Kerr-McGee Oil &
 Gas Onshore L.P.**
 1099 18th Street
 Denver, Colorado 80202



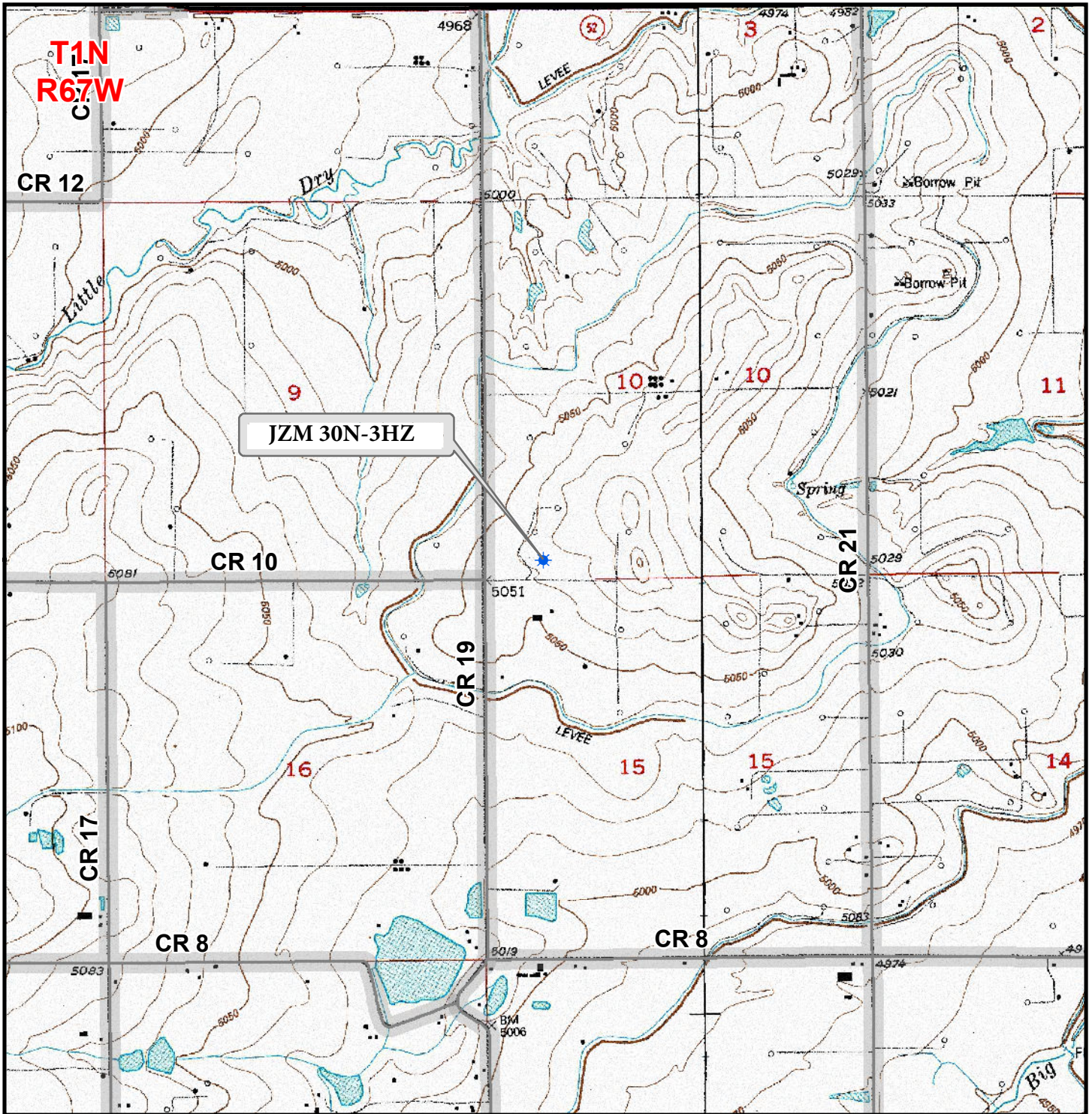
CONSULTING, LLC

SHERIDAN OFFICE
 1095 Saberton Avenue
 Sheridan, Wyoming 82801
 Phone 307-674-0609

LOVELAND OFFICE
 1635 Foxtrail Drive, Suite 204
 Loveland, Colorado 80538
 Phone 970-776-4331

DRAFTED BY: TJP	CHECKED BY: BJR	SHEET NO: 2 2 OF 2
DATE DRAFTED: 8/27/15	DATE SURVEYED: 7/15/15	
REVISED:	FILE NAME: 13-39	

K:\ANADARKO\2013\2013_39_WATTENBERG_T1_R67_SEC_10\GIS\Maps_ABC\JZM 4N-3HZ\JZMState 30N-3HZ.mxd 8/25/2015 11:18:11 AM



Legend

- ★ Well - Fee - Proposed Road - Primitive - Existing Road - County - Existing
- ★ Well - State - Proposed Road - Improved - Existing Road - Highway - Existing

WELL PAD - JZM 4N-3HZ

GENERAL LOCATION MAP

JZM STATE 30N-3HZ

LOCATED IN SECTION 10

T1N, R67W, 6th P.M.

WELD COUNTY, COLORADO

Kerr-McGee Oil & Gas Onshore L.P.

1099 18th Street
Denver, Colorado 80202



CONSULTING, LLC

SHERIDAN OFFICE 2155 North Main Street Sheridan, Wyoming 82801 Phone 307-674-0609	LOVELAND OFFICE 1635 Foxtail Drive, Suite 204 Loveland, Colorado 80538 Phone 970-776-4331
---	---



SCALE: 1" = 2,000ft

NAD83 CO-Nft

DRAWN: JELO

DATE: 25 Aug 2015

REVISED:

DATE: