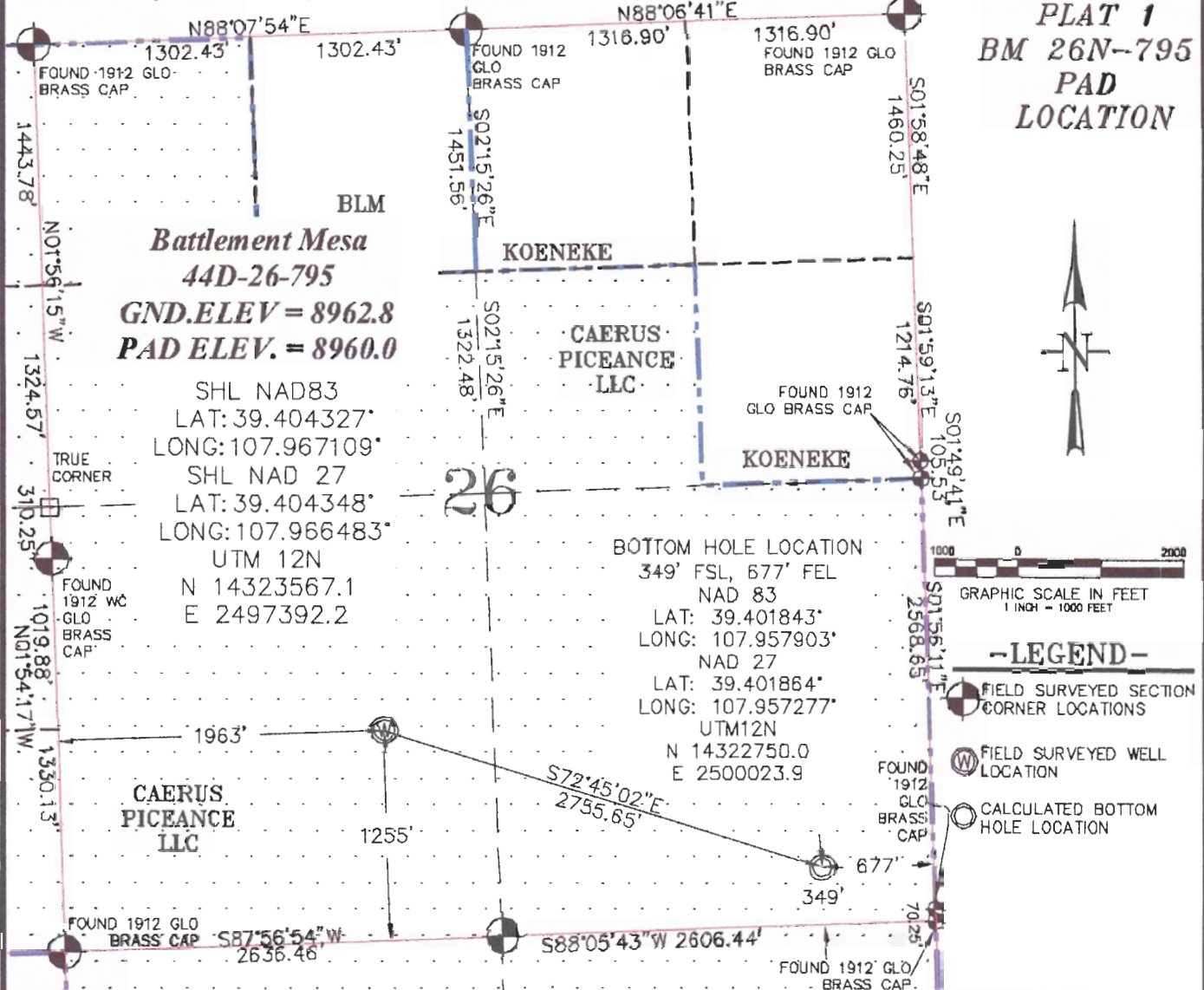


SEC. 26, T. 7 S., R. 95 W. OF THE 6TH P.M.

PLAT 1
BM 26N-795
PAD
LOCATION



Battlement Mesa
44D-26-795
GND.ELEV = 8962.8
PAD ELEV. = 8960.0

SHL NAD83
LAT: 39.404327°
LONG: 107.967109°
SHL NAD 27
LAT: 39.404348°
LONG: 107.966483°
UTM 12N
N 14323567.1
E 2497392.2

BOTTOM HOLE LOCATION
349' FSL, 677' FEL
NAD 83
LAT: 39.401843°
LONG: 107.957903°
NAD 27
LAT: 39.401864°
LONG: 107.957277°
UTM12N
N 14322750.0
E 2500023.9

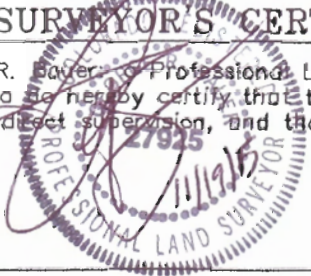
GRAPHIC SCALE IN FEET
1 INCH = 1000 FEET

- LEGEND-**
- FIELD SURVEYED SECTION CORNER LOCATIONS
 - FIELD SURVEYED WELL LOCATION
 - CALCULATED BOTTOM HOLE LOCATION

THIS WELL LOCATION PLAT WAS PREPARED FOR CAERUS PICEANCE LLC TO LOCATE THE BATTLEMENT MESA #44D-26-795 WELL, 1255 FEET FROM THE SOUTH LINE AND 1963 FEET FROM THE WEST LINE IN THE SW1/4 OF SECTION 26, T. 7 S., R. 95 W. OF THE 6TH P.M. GARFIELD COUNTY, COLORADO.

SURVEYOR'S CERTIFICATE

I, George R. Baver, a Professional Land Surveyor in the State of Colorado do hereby certify that this Survey was made under my direct supervision, and that this Plat represents said Survey.



REFERENCE NOTES

- 1) T. 7 S., R. 95 W., 6TH P.M. GLO PLAT.
- 2) U.S.G.S. QUAD: PARACHUTE, CO
- 3) ELEVATIONS BASED ON N.A.V.D. 1988 LIDAR BASED CONTROL PT CP MON 8
- 4) LATITUDES AND LONGITUDES ARE BASED ON NAD 83, COLORADO CENTRAL ZONE.
- 5) GPS OPERATOR ROBERT WOOD, OBSERVED A PDOP OF 1.8.
- 6) ALL GPS OBSERVATIONS ARE IN COMPLIANCE WITH COGCC RULE NO. 215.
- 7) SURFACE AND BOTTOM HOLE LOCATIONS ARE MEASURED 90° FROM SECTION LINES.



	WELL LOCATION PLAT	
	CONSTRUCTION SURVEYS, INC. 0012 SUNRISE BLVD. SILT, CO 81652 (970)876-5753	
	SURVEY BY: REW 10/13/15	PDOP: 1.8
DRAWN BY: REW 11/19/15	DWG: CAERUS\BM26N-795	
REVISED:		