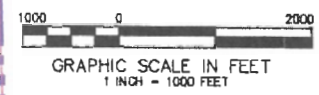
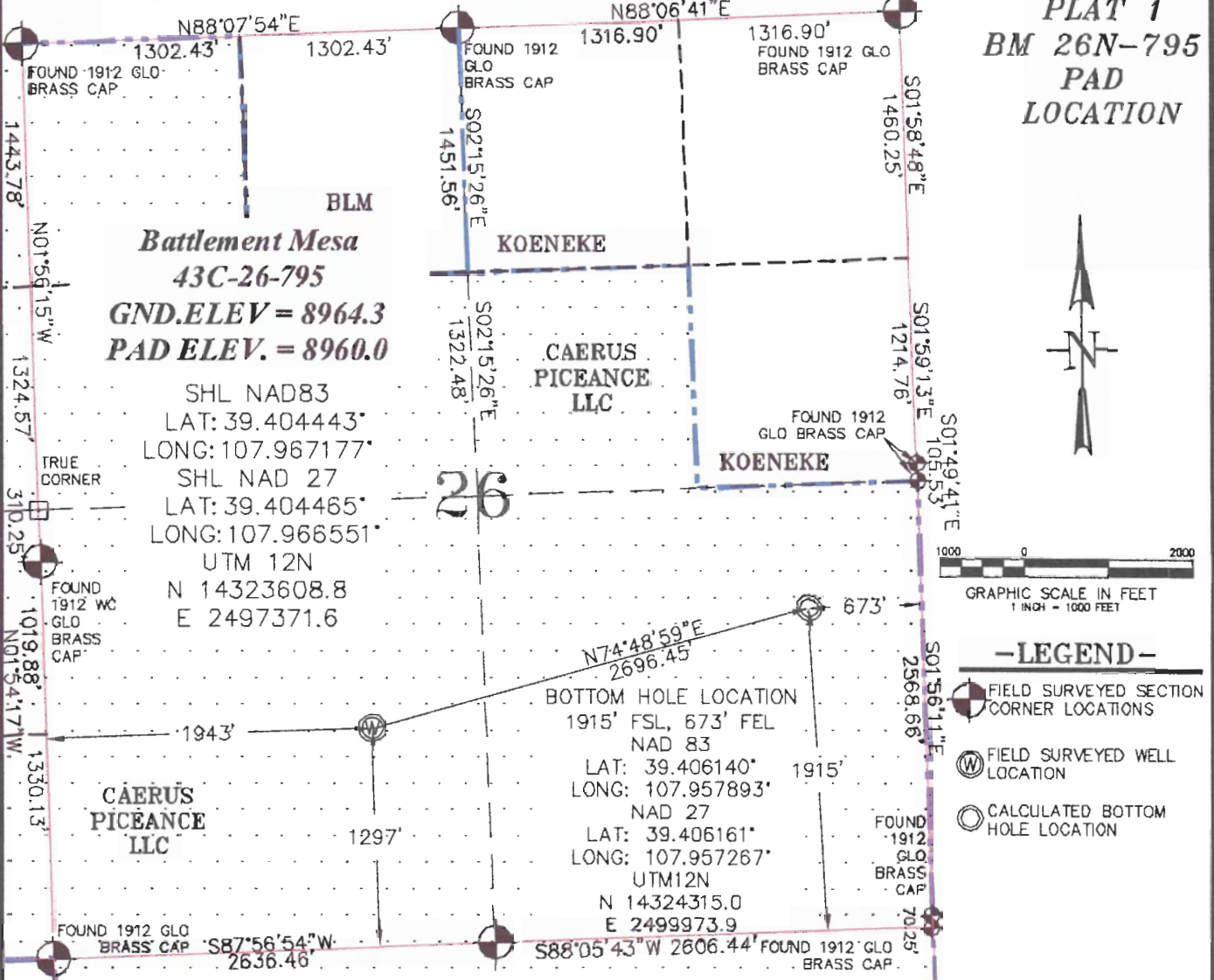


SEC. 26, T. 7 S., R. 95 W. OF THE 6TH P.M.

PLAT 1  
BM 26N-795  
PAD  
LOCATION

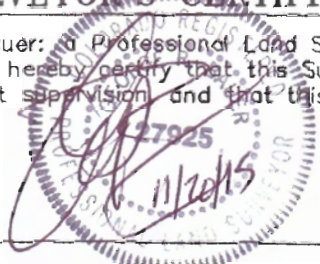


- LEGEND-**
- FIELD SURVEYED SECTION CORNER LOCATIONS
  - FIELD SURVEYED WELL LOCATION
  - CALCULATED BOTTOM HOLE LOCATION

THIS WELL LOCATION PLAT WAS PREPARED FOR CAERUS PICEANCE LLC TO LOCATE THE BATTLEMENT MESA #43C-26-795 WELL, 1297 FEET FROM THE SOUTH LINE AND 1943 FEET FROM THE WEST LINE IN THE SW1/4 OF SECTION 26, T. 7 S., R. 95 W. OF THE 6TH P.M. GARFIELD COUNTY, COLORADO.

**SURVEYOR'S CERTIFICATE**

I, George R. Bauer, a Professional Land Surveyor in the State of Colorado do hereby certify that this Survey was made under my direct supervision and that this Plat represents said Survey.



**REFERENCE NOTES**

- 1) T. 7 S., R. 95 W., 6TH P.M. GLO PLAT.
- 2) U.S.G.S. QUAD: PARACHUTE, CO
- 3) ELEVATIONS BASED ON N.A.V.D. 1988 LIDAR BASED CONTROL PT CP MON 8
- 4) LATITUDES AND LONGITUDES ARE BASED ON NAD 83, COLORADO CENTRAL ZONE.
- 5) GPS OPERATOR ROBERT WOOD, OBSERVED A PDOP OF 1.8.
- 6) ALL GPS OBSERVATIONS ARE IN COMPLIANCE WITH COGCC RULE NO. 215.
- 7) SURFACE AND BOTTOM HOLE LOCATIONS ARE MEASURED 90° FROM SECTION LINES.



WELL LOCATION PLAT	
CONSTRUCTION SURVEYS, INC. 0012 SUNRISE BLVD. SILT, CO 21652 (870)876-5753	
SURVEY BY: REW 10/13/15	PDOP: 1.8
DRAWN BY: REW 11/19/15	DWG: CAERUS\BM26N-795
REVISED:	