



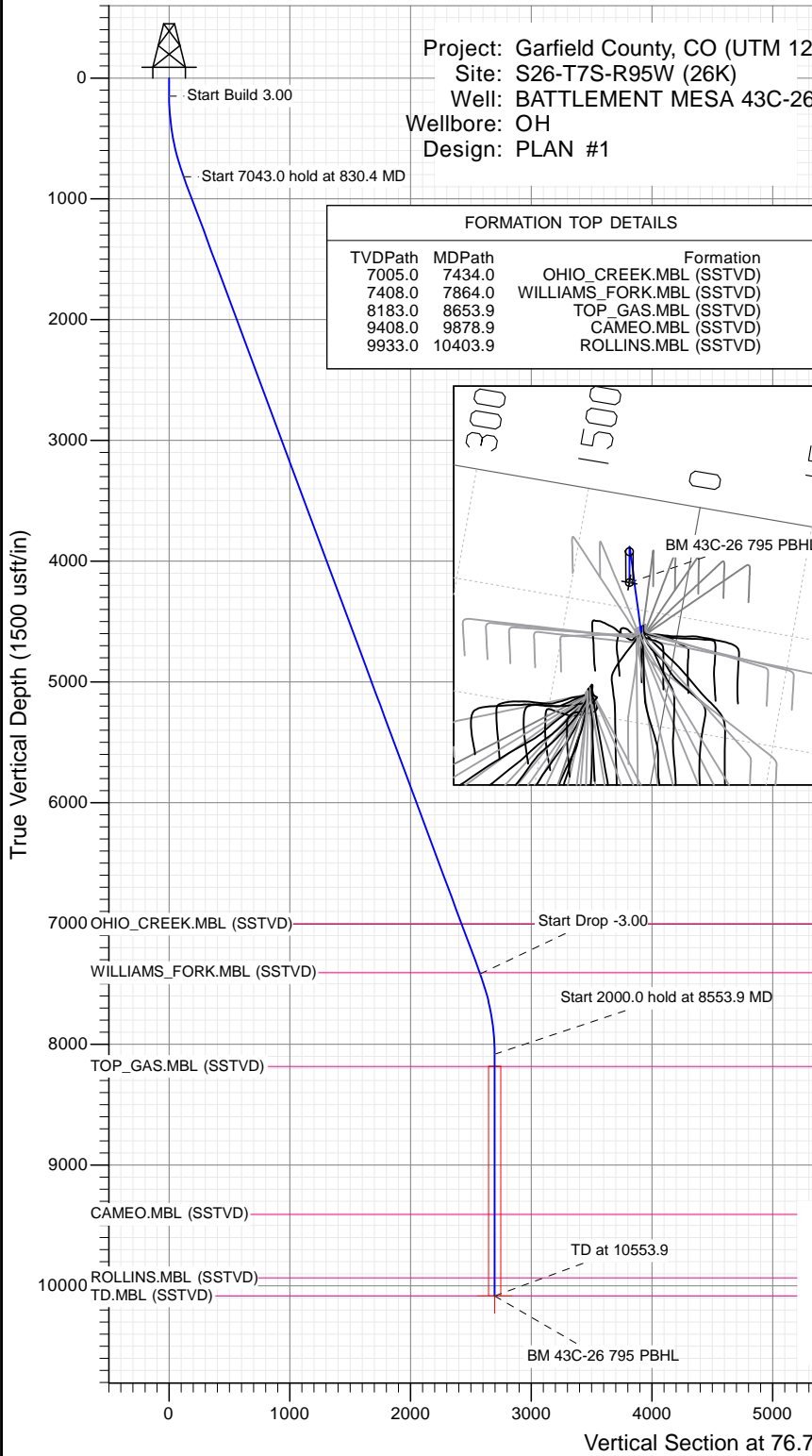
SECTION DETAILS

Sec	MD	Inc	Azi	TVD	+N-S	+E-W	Dleg	TFace	V Sect	Target
1	0.0	0.00	0.00	0.0	0.0	0.0	0.00	0.00	0.0	
2	150.0	0.00	0.00	150.0	0.0	0.0	0.00	0.00	0.0	
3	830.4	20.41	76.74	816.1	27.5	116.7	3.00	76.74	119.9	
4	7873.5	20.41	76.74	7416.9	590.8	2507.8	0.00	0.00	2576.5	
5	8553.9	0.00	0.00	8083.0	618.3	2624.6	3.00	180.00	2696.4	
6	10553.9	0.00	0.00	10083.0	618.3	2624.6	0.00	0.00	2696.4	BM 43C-26 795 PBHL

Project: Garfield County, CO (UTM 12  
 Site: S26-T7S-R95W (26K)  
 Well: BATTLEMENT MESA 43C-26  
 Wellbore: OH  
 Design: PLAN #1

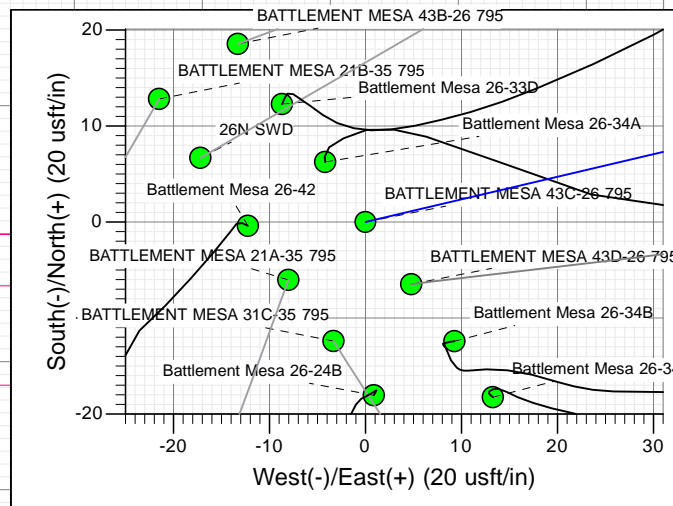
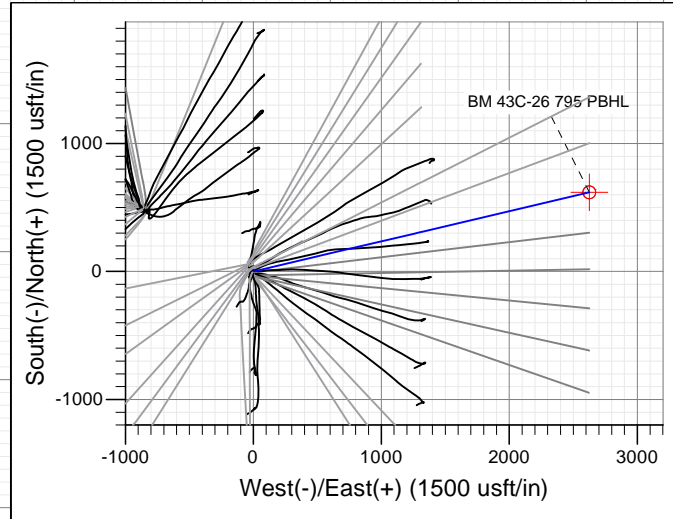
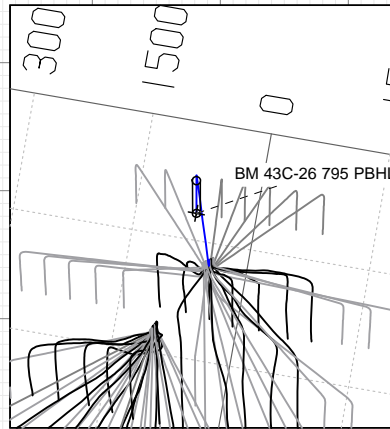
PLAN #1  
 BATTLEMENT MESA 43C-26 795  
 15XXX; LR  
 30 KB @ 8994.0usft  
 Ground Level @ 8964.0  
 NAD 1927 - Western US  
 Well BATTLEMENT MESA 43C-26 795, True North

Type	Target	Azimuth	Origin	Type	N/S	E/W	From TVD
TD	No Target (Freehand)	76.74	Slot		0.0	0.0	0.0
Name		TVD	+N-S	+E/W	Latitude	Longitude	
BM 43C-26 795 PBHL		10083.0	618.3	2624.6	39.406161	-107.957267	



FORMATION TOP DETAILS

TVDPath	MDPath	Formation
7005.0	7434.0	OHIO_CREEK.MBL (SSTVD)
7408.0	7864.0	WILLIAMS_FORK.MBL (SSTVD)
8183.0	8653.9	TOP_GAS.MBL (SSTVD)
9408.0	9878.9	CAMEO.MBL (SSTVD)
9933.0	10403.9	ROLLINS.MBL (SSTVD)



T M  
 Azimuths to True North  
 Magnetic North: 9.45°  
 Magnetic Field  
 Strength: 51901.0snT  
 Dip Angle: 65.63°  
 Date: 11/12/2015  
 Model: HDGM

CASING DETAILS  
 No casing data is available

Vertical Section at 76.74° (1500 usft/in)



WELL DETAILS: BATTLEMENT MESA 43C-26 795

+N-S	+E-W	Northing	Ground Level:	8964.0	Latitude	Longitude
0.0	0.0	14323608.80	Easting	2497371.60	39.404465	-107.966550



## Planning Report

<b>Database:</b>	USA EDM 5000 Multi Users DB	<b>Local Co-ordinate Reference:</b>	Well BATTLEMENT MESA 43C-26 795
<b>Company:</b>	Caerus Oil & Gas	<b>TVD Reference:</b>	30' KB @ 8994.0usft
<b>Project:</b>	Garfield County, CO (UTM 12N)	<b>MD Reference:</b>	30' KB @ 8994.0usft
<b>Site:</b>	S26-T7S-R95W (26K)	<b>North Reference:</b>	True
<b>Well:</b>	BATTLEMENT MESA 43C-26 795	<b>Survey Calculation Method:</b>	Minimum Curvature
<b>Wellbore:</b>	OH		
<b>Design:</b>	PLAN #1		

<b>Project</b>	Garfield County, CO (UTM 12N)		
<b>Map System:</b>	Universal Transverse Mercator (US Survey Feet)	<b>System Datum:</b>	Mean Sea Level
<b>Geo Datum:</b>	NAD 1927 - Western US		
<b>Map Zone:</b>	Zone 12N (114 W to 108 W)		

<b>Site</b>	S26-T7S-R95W (26K)		
<b>Site Position:</b>		<b>Northing:</b>	14,324,088.50 usft
<b>From:</b>	Map	<b>Easting:</b>	2,496,462.30 usft
<b>Position Uncertainty:</b>	0.0 usft	<b>Slot Radius:</b>	13-3/16"
		<b>Latitude:</b>	39.405864
		<b>Longitude:</b>	-107.969708
		<b>Grid Convergence:</b>	1.92 °

<b>Well</b>	BATTLEMENT MESA 43C-26 795		
<b>Well Position</b>	<b>+N/-S</b>	0.0 usft	<b>Northing:</b>
	<b>+E/-W</b>	0.0 usft	<b>Easting:</b>
<b>Position Uncertainty</b>		0.0 usft	<b>Wellhead Elevation:</b>
			0.0 usft
			<b>Latitude:</b>
			39.404465
			<b>Longitude:</b>
			-107.966550
			<b>Ground Level:</b>
			8,964.0 usft

<b>Wellbore</b>	OH		
<b>Magnetics</b>	<b>Model Name</b>	<b>Sample Date</b>	<b>Declination</b>
			(°)
			<b>Dip Angle</b>
			(°)
			<b>Field Strength</b>
			(nT)
	HDGM	11/12/2015	9.45
			65.63
			51,901

<b>Design</b>	PLAN #1		
<b>Audit Notes:</b>			
<b>Version:</b>	<b>Phase:</b>	PLAN	<b>Tie On Depth:</b>
			0.0
<b>Vertical Section:</b>	<b>Depth From (TVD)</b>	<b>+N/-S</b>	<b>+E/-W</b>
	(usft)	(usft)	(usft)
			<b>Direction</b>
			(°)
	0.0	0.0	76.74

Plan Sections										
Measured Depth (usft)	Inclination (°)	Azimuth (°)	Vertical Depth (usft)	+N/-S (usft)	+E/-W (usft)	Dogleg Rate (°/100usft)	Build Rate (°/100usft)	Turn Rate (°/100usft)	TFO (°)	Target
0.0	0.00	0.00	0.0	0.0	0.0	0.00	0.00	0.00	0.00	
150.0	0.00	0.00	150.0	0.0	0.0	0.00	0.00	0.00	0.00	
830.4	20.41	76.74	816.1	27.5	116.7	3.00	3.00	0.00	76.74	
7,873.5	20.41	76.74	7,416.9	590.8	2,507.8	0.00	0.00	0.00	0.00	
8,553.9	0.00	0.00	8,083.0	618.3	2,624.6	3.00	-3.00	0.00	180.00	
10,553.9	0.00	0.00	10,083.0	618.3	2,624.6	0.00	0.00	0.00	0.00	BM 43C-26 795 PBHL

## Planning Report

<b>Database:</b>	USA EDM 5000 Multi Users DB	<b>Local Co-ordinate Reference:</b>	Well BATTLEMENT MESA 43C-26 795
<b>Company:</b>	Caerus Oil & Gas	<b>TVD Reference:</b>	30' KB @ 8994.0usft
<b>Project:</b>	Garfield County, CO (UTM 12N)	<b>MD Reference:</b>	30' KB @ 8994.0usft
<b>Site:</b>	S26-T7S-R95W (26K)	<b>North Reference:</b>	True
<b>Well:</b>	BATTLEMENT MESA 43C-26 795	<b>Survey Calculation Method:</b>	Minimum Curvature
<b>Wellbore:</b>	OH		
<b>Design:</b>	PLAN #1		

Planned Survey									
Measured Depth (usft)	Inclination (°)	Azimuth (°)	Vertical Depth (usft)	+N/-S (usft)	+E/-W (usft)	Vertical Section (usft)	Dogleg Rate (°/100usft)	Build Rate (°/100u)	Comments / Formations
0.0	0.00	0.00	0.0	0.0	0.0	0.0	0.00	0.00	
100.0	0.00	0.00	100.0	0.0	0.0	0.0	0.00	0.00	
150.0	0.00	0.00	150.0	0.0	0.0	0.0	0.00	0.00	Start Build 3.00
200.0	1.50	76.74	200.0	0.2	0.6	0.7	3.00	3.00	
300.0	4.50	76.74	299.8	1.4	5.7	5.9	3.00	3.00	
400.0	7.50	76.74	399.3	3.7	15.9	16.3	3.00	3.00	
500.0	10.50	76.74	498.0	7.3	31.1	32.0	3.00	3.00	
600.0	13.50	76.74	595.8	12.1	51.4	52.8	3.00	3.00	
700.0	16.50	76.74	692.4	18.0	76.6	78.6	3.00	3.00	
800.0	19.50	76.74	787.5	25.1	106.6	109.5	3.00	3.00	
830.4	20.41	76.74	816.1	27.5	116.7	119.9	3.00	3.00	Start 7043.0 hold at 830.4 MD
900.0	20.41	76.74	881.3	33.1	140.4	144.2	0.00	0.00	
1,000.0	20.41	76.74	975.0	41.1	174.3	179.1	0.00	0.00	
1,100.0	20.41	76.74	1,068.8	49.1	208.3	214.0	0.00	0.00	
1,200.0	20.41	76.74	1,162.5	57.1	242.2	248.8	0.00	0.00	
1,300.0	20.41	76.74	1,256.2	65.1	276.2	283.7	0.00	0.00	
1,400.0	20.41	76.74	1,349.9	73.1	310.1	318.6	0.00	0.00	
1,500.0	20.41	76.74	1,443.6	81.1	344.1	353.5	0.00	0.00	
1,600.0	20.41	76.74	1,537.4	89.1	378.0	388.4	0.00	0.00	
1,700.0	20.41	76.74	1,631.1	97.0	412.0	423.2	0.00	0.00	
1,800.0	20.41	76.74	1,724.8	105.0	445.9	458.1	0.00	0.00	
1,900.0	20.41	76.74	1,818.5	113.0	479.9	493.0	0.00	0.00	
2,000.0	20.41	76.74	1,912.2	121.0	513.8	527.9	0.00	0.00	
2,100.0	20.41	76.74	2,006.0	129.0	547.8	562.7	0.00	0.00	
2,200.0	20.41	76.74	2,099.7	137.0	581.7	597.6	0.00	0.00	
2,300.0	20.41	76.74	2,193.4	145.0	615.7	632.5	0.00	0.00	
2,400.0	20.41	76.74	2,287.1	153.0	649.6	667.4	0.00	0.00	
2,500.0	20.41	76.74	2,380.8	161.0	683.6	702.3	0.00	0.00	
2,600.0	20.41	76.74	2,474.6	169.0	717.5	737.1	0.00	0.00	
2,700.0	20.41	76.74	2,568.3	177.0	751.5	772.0	0.00	0.00	
2,800.0	20.41	76.74	2,662.0	185.0	785.4	806.9	0.00	0.00	
2,900.0	20.41	76.74	2,755.7	193.0	819.4	841.8	0.00	0.00	
3,000.0	20.41	76.74	2,849.4	201.0	853.3	876.7	0.00	0.00	
3,100.0	20.41	76.74	2,943.2	209.0	887.3	911.5	0.00	0.00	
3,200.0	20.41	76.74	3,036.9	217.0	921.2	946.4	0.00	0.00	
3,300.0	20.41	76.74	3,130.6	225.0	955.2	981.3	0.00	0.00	
3,400.0	20.41	76.74	3,224.3	233.0	989.1	1,016.2	0.00	0.00	
3,500.0	20.41	76.74	3,318.0	241.0	1,023.1	1,051.1	0.00	0.00	
3,600.0	20.41	76.74	3,411.8	249.0	1,057.0	1,085.9	0.00	0.00	
3,700.0	20.41	76.74	3,505.5	257.0	1,090.9	1,120.8	0.00	0.00	
3,800.0	20.41	76.74	3,599.2	265.0	1,124.9	1,155.7	0.00	0.00	
3,900.0	20.41	76.74	3,692.9	273.0	1,158.8	1,190.6	0.00	0.00	
4,000.0	20.41	76.74	3,786.6	281.0	1,192.8	1,225.5	0.00	0.00	
4,100.0	20.41	76.74	3,880.4	289.0	1,226.7	1,260.3	0.00	0.00	
4,200.0	20.41	76.74	3,974.1	297.0	1,260.7	1,295.2	0.00	0.00	
4,300.0	20.41	76.74	4,067.8	305.0	1,294.6	1,330.1	0.00	0.00	
4,400.0	20.41	76.74	4,161.5	313.0	1,328.6	1,365.0	0.00	0.00	
4,500.0	20.41	76.74	4,255.2	321.0	1,362.5	1,399.8	0.00	0.00	
4,600.0	20.41	76.74	4,349.0	329.0	1,396.5	1,434.7	0.00	0.00	
4,700.0	20.41	76.74	4,442.7	337.0	1,430.4	1,469.6	0.00	0.00	
4,800.0	20.41	76.74	4,536.4	345.0	1,464.4	1,504.5	0.00	0.00	
4,900.0	20.41	76.74	4,630.1	353.0	1,498.3	1,539.4	0.00	0.00	

## Planning Report

<b>Database:</b>	USA EDM 5000 Multi Users DB	<b>Local Co-ordinate Reference:</b>	Well BATTLEMENT MESA 43C-26 795
<b>Company:</b>	Caerus Oil & Gas	<b>TVD Reference:</b>	30' KB @ 8994.0usft
<b>Project:</b>	Garfield County, CO (UTM 12N)	<b>MD Reference:</b>	30' KB @ 8994.0usft
<b>Site:</b>	S26-T7S-R95W (26K)	<b>North Reference:</b>	True
<b>Well:</b>	BATTLEMENT MESA 43C-26 795	<b>Survey Calculation Method:</b>	Minimum Curvature
<b>Wellbore:</b>	OH		
<b>Design:</b>	PLAN #1		

Planned Survey									
Measured Depth (usft)	Inclination (°)	Azimuth (°)	Vertical Depth (usft)	+N/-S (usft)	+E/-W (usft)	Vertical Section (usft)	Dogleg Rate (°/100usft)	Build Rate (°/100u)	Comments / Formations
5,000.0	20.41	76.74	4,723.8	361.0	1,532.3	1,574.2	0.00	0.00	
5,100.0	20.41	76.74	4,817.6	369.0	1,566.2	1,609.1	0.00	0.00	
5,200.0	20.41	76.74	4,911.3	377.0	1,600.2	1,644.0	0.00	0.00	
5,300.0	20.41	76.74	5,005.0	385.0	1,634.1	1,678.9	0.00	0.00	
5,400.0	20.41	76.74	5,098.7	393.0	1,668.1	1,713.8	0.00	0.00	
5,500.0	20.41	76.74	5,192.4	401.0	1,702.0	1,748.6	0.00	0.00	
5,600.0	20.41	76.74	5,286.2	409.0	1,736.0	1,783.5	0.00	0.00	
5,700.0	20.41	76.74	5,379.9	417.0	1,769.9	1,818.4	0.00	0.00	
5,800.0	20.41	76.74	5,473.6	425.0	1,803.9	1,853.3	0.00	0.00	
5,900.0	20.41	76.74	5,567.3	433.0	1,837.8	1,888.2	0.00	0.00	
6,000.0	20.41	76.74	5,661.0	441.0	1,871.8	1,923.0	0.00	0.00	
6,100.0	20.41	76.74	5,754.8	449.0	1,905.7	1,957.9	0.00	0.00	
6,200.0	20.41	76.74	5,848.5	457.0	1,939.7	1,992.8	0.00	0.00	
6,300.0	20.41	76.74	5,942.2	465.0	1,973.6	2,027.7	0.00	0.00	
6,400.0	20.41	76.74	6,035.9	473.0	2,007.6	2,062.6	0.00	0.00	
6,500.0	20.41	76.74	6,129.6	481.0	2,041.5	2,097.4	0.00	0.00	
6,600.0	20.41	76.74	6,223.4	489.0	2,075.5	2,132.3	0.00	0.00	
6,700.0	20.41	76.74	6,317.1	496.9	2,109.4	2,167.2	0.00	0.00	
6,800.0	20.41	76.74	6,410.8	504.9	2,143.4	2,202.1	0.00	0.00	
6,900.0	20.41	76.74	6,504.5	512.9	2,177.3	2,236.9	0.00	0.00	
7,000.0	20.41	76.74	6,598.2	520.9	2,211.3	2,271.8	0.00	0.00	
7,100.0	20.41	76.74	6,692.0	528.9	2,245.2	2,306.7	0.00	0.00	
7,200.0	20.41	76.74	6,785.7	536.9	2,279.2	2,341.6	0.00	0.00	
7,300.0	20.41	76.74	6,879.4	544.9	2,313.1	2,376.5	0.00	0.00	
7,400.0	20.41	76.74	6,973.1	552.9	2,347.1	2,411.3	0.00	0.00	
7,434.0	20.41	76.74	7,005.0	555.7	2,358.6	2,423.2	0.00	0.00	OHIO_CREEK.MBL (SSTVD)
7,500.0	20.41	76.74	7,066.8	560.9	2,381.0	2,446.2	0.00	0.00	
7,600.0	20.41	76.74	7,160.6	568.9	2,415.0	2,481.1	0.00	0.00	
7,700.0	20.41	76.74	7,254.3	576.9	2,448.9	2,516.0	0.00	0.00	
7,800.0	20.41	76.74	7,348.0	584.9	2,482.9	2,550.9	0.00	0.00	
7,864.0	20.41	76.74	7,408.0	590.0	2,504.6	2,573.2	0.00	0.00	WILLIAMS_FORK.MBL (SSTVD)
7,873.5	20.41	76.74	7,416.9	590.8	2,507.8	2,576.5	0.00	0.00	Start Drop -3.00
7,900.0	19.62	76.74	7,441.8	592.9	2,516.7	2,585.6	3.00	-3.00	
8,000.0	16.62	76.74	7,536.8	600.0	2,546.9	2,616.7	3.00	-3.00	
8,100.0	13.62	76.74	7,633.4	606.0	2,572.3	2,642.7	3.00	-3.00	
8,200.0	10.62	76.74	7,731.1	610.8	2,592.7	2,663.7	3.00	-3.00	
8,300.0	7.62	76.74	7,829.8	614.4	2,608.2	2,679.6	3.00	-3.00	
8,400.0	4.62	76.74	7,929.3	616.9	2,618.5	2,690.2	3.00	-3.00	
8,500.0	1.62	76.74	8,029.1	618.1	2,623.8	2,695.7	3.00	-3.00	
8,553.9	0.00	0.00	8,083.0	618.3	2,624.6	2,696.4	3.00	-3.00	Start 2000.0 hold at 8553.9 MD
8,600.0	0.00	0.00	8,129.1	618.3	2,624.6	2,696.4	0.00	0.00	
8,653.9	0.00	0.00	8,183.0	618.3	2,624.6	2,696.4	0.00	0.00	TOP_GAS.MBL (SSTVD)
8,700.0	0.00	0.00	8,229.1	618.3	2,624.6	2,696.4	0.00	0.00	
8,800.0	0.00	0.00	8,329.1	618.3	2,624.6	2,696.4	0.00	0.00	
8,900.0	0.00	0.00	8,429.1	618.3	2,624.6	2,696.4	0.00	0.00	
9,000.0	0.00	0.00	8,529.1	618.3	2,624.6	2,696.4	0.00	0.00	
9,100.0	0.00	0.00	8,629.1	618.3	2,624.6	2,696.4	0.00	0.00	
9,200.0	0.00	0.00	8,729.1	618.3	2,624.6	2,696.4	0.00	0.00	
9,300.0	0.00	0.00	8,829.1	618.3	2,624.6	2,696.4	0.00	0.00	
9,400.0	0.00	0.00	8,929.1	618.3	2,624.6	2,696.4	0.00	0.00	
9,500.0	0.00	0.00	9,029.1	618.3	2,624.6	2,696.4	0.00	0.00	
9,600.0	0.00	0.00	9,129.1	618.3	2,624.6	2,696.4	0.00	0.00	

## Planning Report

<b>Database:</b>	USA EDM 5000 Multi Users DB	<b>Local Co-ordinate Reference:</b>	Well BATTLEMENT MESA 43C-26 795
<b>Company:</b>	Caerus Oil & Gas	<b>TVD Reference:</b>	30' KB @ 8994.0usft
<b>Project:</b>	Garfield County, CO (UTM 12N)	<b>MD Reference:</b>	30' KB @ 8994.0usft
<b>Site:</b>	S26-T7S-R95W (26K)	<b>North Reference:</b>	True
<b>Well:</b>	BATTLEMENT MESA 43C-26 795	<b>Survey Calculation Method:</b>	Minimum Curvature
<b>Wellbore:</b>	OH		
<b>Design:</b>	PLAN #1		

Planned Survey									
Measured Depth (usft)	Inclination (°)	Azimuth (°)	Vertical Depth (usft)	+N/-S (usft)	+E/-W (usft)	Vertical Section (usft)	Dogleg Rate (°/100usft)	Build Rate (°/100u)	Comments / Formations
9,700.0	0.00	0.00	9,229.1	618.3	2,624.6	2,696.4	0.00	0.00	
9,800.0	0.00	0.00	9,329.1	618.3	2,624.6	2,696.4	0.00	0.00	
9,878.9	0.00	0.00	9,408.0	618.3	2,624.6	2,696.4	0.00	0.00	CAMEO.MBL (SSTVD)
9,900.0	0.00	0.00	9,429.1	618.3	2,624.6	2,696.4	0.00	0.00	
10,000.0	0.00	0.00	9,529.1	618.3	2,624.6	2,696.4	0.00	0.00	
10,100.0	0.00	0.00	9,629.1	618.3	2,624.6	2,696.4	0.00	0.00	
10,200.0	0.00	0.00	9,729.1	618.3	2,624.6	2,696.4	0.00	0.00	
10,300.0	0.00	0.00	9,829.1	618.3	2,624.6	2,696.4	0.00	0.00	
10,400.0	0.00	0.00	9,929.1	618.3	2,624.6	2,696.4	0.00	0.00	
10,403.9	0.00	0.00	9,933.0	618.3	2,624.6	2,696.4	0.00	0.00	ROLLINS.MBL (SSTVD)
10,500.0	0.00	0.00	10,029.1	618.3	2,624.6	2,696.4	0.00	0.00	
10,553.9	0.00	0.00	10,083.0	618.3	2,624.6	2,696.4	0.00	0.00	TD at 10553.9 - BM 43C-26 795 PBHL

Targets									
Target Name	Dip Angle (°)	Dip Dir. (°)	TVD (usft)	+N/-S (usft)	+E/-W (usft)	Northing (usft)	Easting (usft)	Latitude	Longitude
BM 43C-26 795 PBHL - hit/miss target - Shape - plan hits target center - Circle (radius 50.0)	0.00	0.00	10,083.0	618.3	2,624.6	14,324,315.00	2,499,973.90	39.406161	-107.957267

Formations						
Measured Depth (usft)	Vertical Depth (usft)	Name	Lithology	Dip (°)	Dip Direction (°)	
7,434.0	7,005.0	OHIO_CREEK.MBL (SSTVD)		0.00		
7,864.0	7,408.0	WILLIAMS_FORK.MBL (SSTVD)		0.00		
8,653.9	8,183.0	TOP_GAS.MBL (SSTVD)		0.00		
9,878.9	9,408.0	CAMEO.MBL (SSTVD)		0.00		
10,403.9	9,933.0	ROLLINS.MBL (SSTVD)		0.00		

Plan Annotations					
Measured Depth (usft)	Vertical Depth (usft)	Local Coordinates		Comment	
		+N/-S (usft)	+E/-W (usft)		
150.0	150.0	0.0	0.0	Start Build 3.00	
830.4	816.1	27.5	116.7	Start 7043.0 hold at 830.4 MD	
7,873.5	7,416.9	590.8	2,507.8	Start Drop -3.00	
8,553.9	8,083.0	618.3	2,624.6	Start 2000.0 hold at 8553.9 MD	
10,553.9	10,083.0	618.3	2,624.6	TD at 10553.9	