



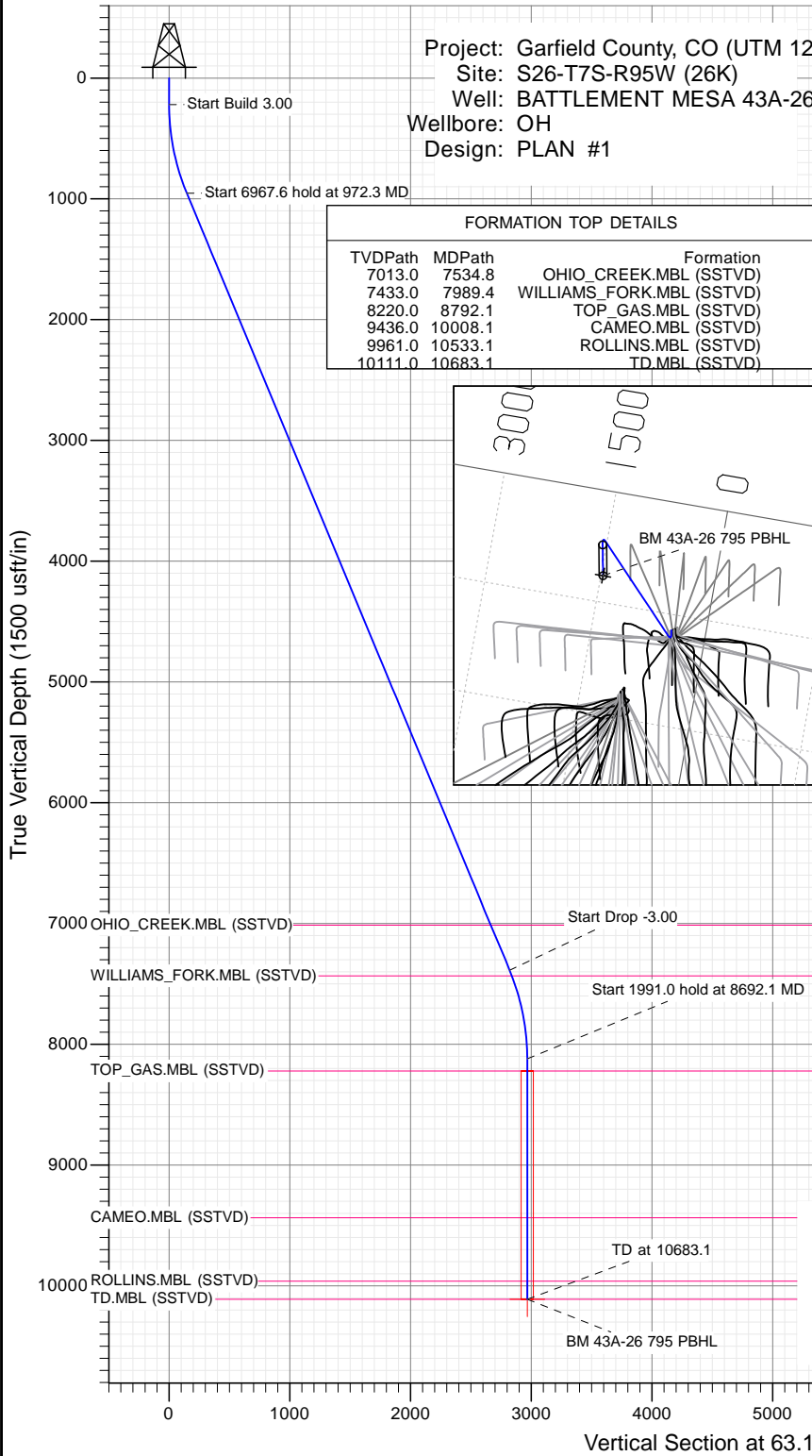
SECTION DETAILS

Sec	MD	Inc	Azi	TVD	+N-S	+E-W	Dleg	TFace	V Sect	Target
1	0.0	0.00	0.00	0.0	0.0	0.0	0.00	0.00	0.0	
2	220.0	0.00	0.00	220.0	0.0	0.0	0.00	0.00	0.0	
3	972.3	22.57	63.17	953.0	66.0	130.5	3.00	63.17	146.2	
4	7939.9	22.57	63.17	7387.0	1272.8	2516.7	0.00	0.00	2820.3	
5	8692.1	0.00	0.00	8120.0	1338.9	2647.2	3.00	180.00	2966.5	
6	10683.1	0.00	0.00	10111.0	1338.9	2647.2	0.00	0.00	2966.5	BM 43A-26 795 PBHL

Project: Garfield County, CO (UTM 12)  
 Site: S26-T7S-R95W (26K)  
 Well: BATTLEMENT MESA 43A-26  
 Wellbore: OH  
 Design: PLAN #1

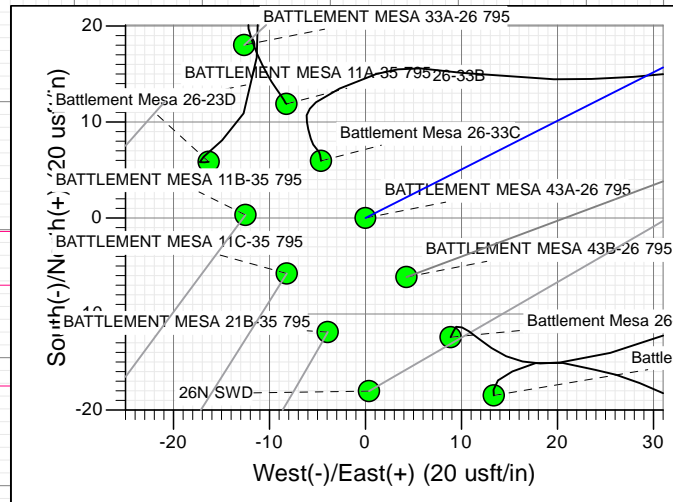
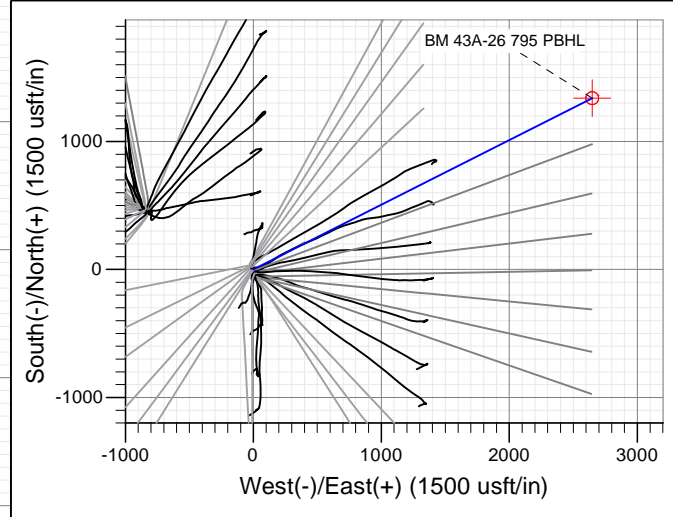
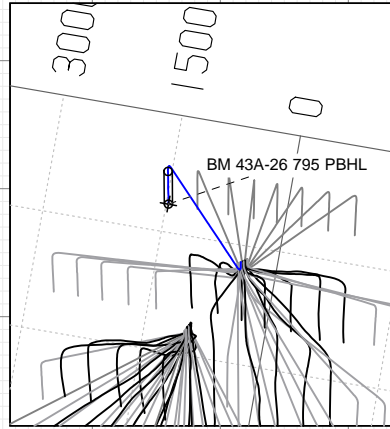
PLAN #1  
 BATTLEMENT MESA 43A-26 795  
 15XXX; LR  
 30 KB @ 8994.0usft  
 Ground Level @ 8964.0  
 NAD 1927 - Western US  
 Well BATTLEMENT MESA 43A-26 795, True North

Type	Target	Azimuth	Origin	Type	N/S	E/W	From
TD	No Target (Freehand)	63.17	Slot		0.0	0.0	TVD
Name		TVD	+N-S	+E/W	Latitude	Longitude	
BM 43A-26 795 PBHL		10111.0	1338.9	2647.2	39.408206	-107.957249	



FORMATION TOP DETAILS

TVDPPath	MDPath	Formation
7013.0	7534.8	OHIO_CREEK.MBL (SSTVD)
7433.0	7989.4	WILLIAMS_FORK.MBL (SSTVD)
8220.0	8792.1	TOP_GAS.MBL (SSTVD)
9436.0	10008.1	CAMEO.MBL (SSTVD)
9961.0	10533.1	ROLLINS.MBL (SSTVD)
10111.0	10683.1	TD.MBL (SSTVD)



TM  
 Azimuths to True North  
 Magnetic North: 9.45°  
 Magnetic Field  
 Strength: 51901.2snT  
 Dip Angle: 65.63°  
 Date: 11/12/2015  
 Model: HDGM

CASING DETAILS

No casing data is available



WELL DETAILS: BATTLEMENT MESA 43A-26 795

Ground Level: 8964.0

+N-S	+E-W	Northing	Easting	Latitude	Longitude
0.0	0.0	14323632.90	2497353.20	39.404532	-107.966613

## Planning Report

<b>Database:</b>	USA EDM 5000 Multi Users DB	<b>Local Co-ordinate Reference:</b>	Well BATTLEMENT MESA 43A-26 795
<b>Company:</b>	Caerus Oil & Gas	<b>TVD Reference:</b>	30' KB @ 8994.0usft
<b>Project:</b>	Garfield County, CO (UTM 12N)	<b>MD Reference:</b>	30' KB @ 8994.0usft
<b>Site:</b>	S26-T7S-R95W (26K)	<b>North Reference:</b>	True
<b>Well:</b>	BATTLEMENT MESA 43A-26 795	<b>Survey Calculation Method:</b>	Minimum Curvature
<b>Wellbore:</b>	OH		
<b>Design:</b>	PLAN #1		

<b>Project</b>	Garfield County, CO (UTM 12N)		
<b>Map System:</b>	Universal Transverse Mercator (US Survey Feet)	<b>System Datum:</b>	Mean Sea Level
<b>Geo Datum:</b>	NAD 1927 - Western US		
<b>Map Zone:</b>	Zone 12N (114 W to 108 W)		

<b>Site</b>	S26-T7S-R95W (26K)				
<b>Site Position:</b>		<b>Northing:</b>	14,324,088.50 usft	<b>Latitude:</b>	39.405864
<b>From:</b>	Map	<b>Easting:</b>	2,496,462.30 usft	<b>Longitude:</b>	-107.969708
<b>Position Uncertainty:</b>	0.0 usft	<b>Slot Radius:</b>	13-3/16"	<b>Grid Convergence:</b>	1.92 °

<b>Well</b>	BATTLEMENT MESA 43A-26 795					
<b>Well Position</b>	<b>+N/-S</b>	0.0 usft	<b>Northing:</b>	14,323,632.90 usft	<b>Latitude:</b>	39.404532
	<b>+E/-W</b>	0.0 usft	<b>Easting:</b>	2,497,353.20 usft	<b>Longitude:</b>	-107.966613
<b>Position Uncertainty</b>		0.0 usft	<b>Wellhead Elevation:</b>	0.0 usft	<b>Ground Level:</b>	8,964.0 usft

<b>Wellbore</b>	OH				
<b>Magnetics</b>	<b>Model Name</b>	<b>Sample Date</b>	<b>Declination (°)</b>	<b>Dip Angle (°)</b>	<b>Field Strength (nT)</b>
	HDGM	11/12/2015	9.45	65.63	51,901

<b>Design</b>	PLAN #1			
<b>Audit Notes:</b>				
<b>Version:</b>	<b>Phase:</b>	PLAN	<b>Tie On Depth:</b>	0.0
<b>Vertical Section:</b>	<b>Depth From (TVD) (usft)</b>	<b>+N/-S (usft)</b>	<b>+E/-W (usft)</b>	<b>Direction (°)</b>
	0.0	0.0	0.0	63.17

Plan Sections										
Measured Depth (usft)	Inclination (°)	Azimuth (°)	Vertical Depth (usft)	+N/-S (usft)	+E/-W (usft)	Dogleg Rate (°/100usft)	Build Rate (°/100usft)	Turn Rate (°/100usft)	TFO (°)	Target
0.0	0.00	0.00	0.0	0.0	0.0	0.00	0.00	0.00	0.00	
220.0	0.00	0.00	220.0	0.0	0.0	0.00	0.00	0.00	0.00	
972.3	22.57	63.17	953.0	66.0	130.5	3.00	3.00	0.00	63.17	
7,939.9	22.57	63.17	7,387.0	1,272.8	2,516.7	0.00	0.00	0.00	0.00	
8,692.1	0.00	0.00	8,120.0	1,338.9	2,647.2	3.00	-3.00	0.00	180.00	
10,683.1	0.00	0.00	10,111.0	1,338.9	2,647.2	0.00	0.00	0.00	0.00	BM 43A-26 795 PBHL

## Planning Report

<b>Database:</b>	USA EDM 5000 Multi Users DB	<b>Local Co-ordinate Reference:</b>	Well BATTLEMENT MESA 43A-26 795
<b>Company:</b>	Caerus Oil & Gas	<b>TVD Reference:</b>	30' KB @ 8994.0usft
<b>Project:</b>	Garfield County, CO (UTM 12N)	<b>MD Reference:</b>	30' KB @ 8994.0usft
<b>Site:</b>	S26-T7S-R95W (26K)	<b>North Reference:</b>	True
<b>Well:</b>	BATTLEMENT MESA 43A-26 795	<b>Survey Calculation Method:</b>	Minimum Curvature
<b>Wellbore:</b>	OH		
<b>Design:</b>	PLAN #1		

Planned Survey									
Measured Depth (usft)	Inclination (°)	Azimuth (°)	Vertical Depth (usft)	+N/-S (usft)	+E/-W (usft)	Vertical Section (usft)	Dogleg Rate (°/100usft)	Build Rate (°/100u)	Comments / Formations
0.0	0.00	0.00	0.0	0.0	0.0	0.0	0.00	0.00	
100.0	0.00	0.00	100.0	0.0	0.0	0.0	0.00	0.00	
200.0	0.00	0.00	200.0	0.0	0.0	0.0	0.00	0.00	
220.0	0.00	0.00	220.0	0.0	0.0	0.0	0.00	0.00	Start Build 3.00
300.0	2.40	63.17	300.0	0.8	1.5	1.7	3.00	3.00	
400.0	5.40	63.17	399.7	3.8	7.6	8.5	3.00	3.00	
500.0	8.40	63.17	499.0	9.2	18.3	20.5	3.00	3.00	
600.0	11.40	63.17	597.5	17.0	33.6	37.7	3.00	3.00	
700.0	14.40	63.17	695.0	27.1	53.5	60.0	3.00	3.00	
800.0	17.40	63.17	791.1	39.4	78.0	87.4	3.00	3.00	
900.0	20.40	63.17	885.7	54.1	106.9	119.8	3.00	3.00	
972.3	22.57	63.17	953.0	66.0	130.5	146.2	3.00	3.00	Start 6967.6 hold at 972.3 MD
1,000.0	22.57	63.17	978.6	70.8	140.0	156.9	0.00	0.00	
1,100.0	22.57	63.17	1,070.9	88.1	174.3	195.3	0.00	0.00	
1,200.0	22.57	63.17	1,163.3	105.4	208.5	233.6	0.00	0.00	
1,300.0	22.57	63.17	1,255.6	122.8	242.7	272.0	0.00	0.00	
1,400.0	22.57	63.17	1,347.9	140.1	277.0	310.4	0.00	0.00	
1,500.0	22.57	63.17	1,440.3	157.4	311.2	348.8	0.00	0.00	
1,600.0	22.57	63.17	1,532.6	174.7	345.5	387.2	0.00	0.00	
1,700.0	22.57	63.17	1,625.0	192.1	379.7	425.5	0.00	0.00	
1,800.0	22.57	63.17	1,717.3	209.4	414.0	463.9	0.00	0.00	
1,900.0	22.57	63.17	1,809.7	226.7	448.2	502.3	0.00	0.00	
2,000.0	22.57	63.17	1,902.0	244.0	482.5	540.7	0.00	0.00	
2,100.0	22.57	63.17	1,994.3	261.3	516.7	579.0	0.00	0.00	
2,200.0	22.57	63.17	2,086.7	278.7	551.0	617.4	0.00	0.00	
2,300.0	22.57	63.17	2,179.0	296.0	585.2	655.8	0.00	0.00	
2,400.0	22.57	63.17	2,271.4	313.3	619.5	694.2	0.00	0.00	
2,500.0	22.57	63.17	2,363.7	330.6	653.7	732.6	0.00	0.00	
2,600.0	22.57	63.17	2,456.1	347.9	688.0	770.9	0.00	0.00	
2,700.0	22.57	63.17	2,548.4	365.3	722.2	809.3	0.00	0.00	
2,800.0	22.57	63.17	2,640.7	382.6	756.5	847.7	0.00	0.00	
2,900.0	22.57	63.17	2,733.1	399.9	790.7	886.1	0.00	0.00	
3,000.0	22.57	63.17	2,825.4	417.2	824.9	924.4	0.00	0.00	
3,100.0	22.57	63.17	2,917.8	434.5	859.2	962.8	0.00	0.00	
3,200.0	22.57	63.17	3,010.1	451.9	893.4	1,001.2	0.00	0.00	
3,300.0	22.57	63.17	3,102.5	469.2	927.7	1,039.6	0.00	0.00	
3,400.0	22.57	63.17	3,194.8	486.5	961.9	1,078.0	0.00	0.00	
3,500.0	22.57	63.17	3,287.1	503.8	996.2	1,116.3	0.00	0.00	
3,600.0	22.57	63.17	3,379.5	521.1	1,030.4	1,154.7	0.00	0.00	
3,700.0	22.57	63.17	3,471.8	538.5	1,064.7	1,193.1	0.00	0.00	
3,800.0	22.57	63.17	3,564.2	555.8	1,098.9	1,231.5	0.00	0.00	
3,900.0	22.57	63.17	3,656.5	573.1	1,133.2	1,269.9	0.00	0.00	
4,000.0	22.57	63.17	3,748.8	590.4	1,167.4	1,308.2	0.00	0.00	
4,100.0	22.57	63.17	3,841.2	607.8	1,201.7	1,346.6	0.00	0.00	
4,200.0	22.57	63.17	3,933.5	625.1	1,235.9	1,385.0	0.00	0.00	
4,300.0	22.57	63.17	4,025.9	642.4	1,270.2	1,423.4	0.00	0.00	
4,400.0	22.57	63.17	4,118.2	659.7	1,304.4	1,461.7	0.00	0.00	
4,500.0	22.57	63.17	4,210.6	677.0	1,338.6	1,500.1	0.00	0.00	
4,600.0	22.57	63.17	4,302.9	694.4	1,372.9	1,538.5	0.00	0.00	
4,700.0	22.57	63.17	4,395.2	711.7	1,407.1	1,576.9	0.00	0.00	
4,800.0	22.57	63.17	4,487.6	729.0	1,441.4	1,615.3	0.00	0.00	
4,900.0	22.57	63.17	4,579.9	746.3	1,475.6	1,653.6	0.00	0.00	

Planning Report

<b>Database:</b>	USA EDM 5000 Multi Users DB	<b>Local Co-ordinate Reference:</b>	Well BATTLEMENT MESA 43A-26 795
<b>Company:</b>	Caerus Oil & Gas	<b>TVD Reference:</b>	30' KB @ 8994.0usft
<b>Project:</b>	Garfield County, CO (UTM 12N)	<b>MD Reference:</b>	30' KB @ 8994.0usft
<b>Site:</b>	S26-T7S-R95W (26K)	<b>North Reference:</b>	True
<b>Well:</b>	BATTLEMENT MESA 43A-26 795	<b>Survey Calculation Method:</b>	Minimum Curvature
<b>Wellbore:</b>	OH		
<b>Design:</b>	PLAN #1		

Planned Survey									
Measured Depth (usft)	Inclination (°)	Azimuth (°)	Vertical Depth (usft)	+N/-S (usft)	+E/-W (usft)	Vertical Section (usft)	Dogleg Rate (°/100usft)	Build Rate (°/100u)	Comments / Formations
5,000.0	22.57	63.17	4,672.3	763.6	1,509.9	1,692.0	0.00	0.00	
5,100.0	22.57	63.17	4,764.6	781.0	1,544.1	1,730.4	0.00	0.00	
5,200.0	22.57	63.17	4,857.0	798.3	1,578.4	1,768.8	0.00	0.00	
5,300.0	22.57	63.17	4,949.3	815.6	1,612.6	1,807.1	0.00	0.00	
5,400.0	22.57	63.17	5,041.6	832.9	1,646.9	1,845.5	0.00	0.00	
5,500.0	22.57	63.17	5,134.0	850.2	1,681.1	1,883.9	0.00	0.00	
5,600.0	22.57	63.17	5,226.3	867.6	1,715.4	1,922.3	0.00	0.00	
5,700.0	22.57	63.17	5,318.7	884.9	1,749.6	1,960.7	0.00	0.00	
5,800.0	22.57	63.17	5,411.0	902.2	1,783.9	1,999.0	0.00	0.00	
5,900.0	22.57	63.17	5,503.4	919.5	1,818.1	2,037.4	0.00	0.00	
6,000.0	22.57	63.17	5,595.7	936.8	1,852.4	2,075.8	0.00	0.00	
6,100.0	22.57	63.17	5,688.0	954.2	1,886.6	2,114.2	0.00	0.00	
6,200.0	22.57	63.17	5,780.4	971.5	1,920.8	2,152.5	0.00	0.00	
6,300.0	22.57	63.17	5,872.7	988.8	1,955.1	2,190.9	0.00	0.00	
6,400.0	22.57	63.17	5,965.1	1,006.1	1,989.3	2,229.3	0.00	0.00	
6,500.0	22.57	63.17	6,057.4	1,023.4	2,023.6	2,267.7	0.00	0.00	
6,600.0	22.57	63.17	6,149.8	1,040.8	2,057.8	2,306.1	0.00	0.00	
6,700.0	22.57	63.17	6,242.1	1,058.1	2,092.1	2,344.4	0.00	0.00	
6,800.0	22.57	63.17	6,334.4	1,075.4	2,126.3	2,382.8	0.00	0.00	
6,900.0	22.57	63.17	6,426.8	1,092.7	2,160.6	2,421.2	0.00	0.00	
7,000.0	22.57	63.17	6,519.1	1,110.1	2,194.8	2,459.6	0.00	0.00	
7,100.0	22.57	63.17	6,611.5	1,127.4	2,229.1	2,497.9	0.00	0.00	
7,200.0	22.57	63.17	6,703.8	1,144.7	2,263.3	2,536.3	0.00	0.00	
7,300.0	22.57	63.17	6,796.2	1,162.0	2,297.6	2,574.7	0.00	0.00	
7,400.0	22.57	63.17	6,888.5	1,179.3	2,331.8	2,613.1	0.00	0.00	
7,500.0	22.57	63.17	6,980.8	1,196.7	2,366.1	2,651.5	0.00	0.00	
7,534.8	22.57	63.17	7,013.0	1,202.7	2,378.0	2,664.8	0.00	0.00	OHIO_CREEK.MBL (SSTVD)
7,600.0	22.57	63.17	7,073.2	1,214.0	2,400.3	2,689.8	0.00	0.00	
7,700.0	22.57	63.17	7,165.5	1,231.3	2,434.6	2,728.2	0.00	0.00	
7,800.0	22.57	63.17	7,257.9	1,248.6	2,468.8	2,766.6	0.00	0.00	
7,900.0	22.57	63.17	7,350.2	1,265.9	2,503.0	2,805.0	0.00	0.00	
7,939.9	22.57	63.17	7,387.0	1,272.8	2,516.7	2,820.3	0.00	0.00	Start Drop -3.00
7,989.4	21.08	63.17	7,433.0	1,281.2	2,533.1	2,838.7	3.00	-3.00	WILLIAMS_FORK.MBL (SSTVD)
8,000.0	20.76	63.17	7,442.9	1,282.9	2,536.5	2,842.5	3.00	-3.00	
8,100.0	17.76	63.17	7,537.3	1,297.8	2,565.9	2,875.5	3.00	-3.00	
8,200.0	14.76	63.17	7,633.3	1,310.4	2,590.9	2,903.5	3.00	-3.00	
8,300.0	11.76	63.17	7,730.6	1,320.7	2,611.4	2,926.4	3.00	-3.00	
8,400.0	8.76	63.17	7,829.0	1,328.8	2,627.3	2,944.2	3.00	-3.00	
8,500.0	5.76	63.17	7,928.2	1,334.5	2,638.6	2,956.9	3.00	-3.00	
8,600.0	2.76	63.17	8,027.9	1,337.8	2,645.2	2,964.3	3.00	-3.00	
8,692.1	0.00	0.00	8,120.0	1,338.9	2,647.2	2,966.5	3.00	-3.00	Start 1991.0 hold at 8692.1 MD
8,700.0	0.00	0.00	8,127.9	1,338.9	2,647.2	2,966.5	0.00	0.00	
8,792.1	0.00	0.00	8,220.0	1,338.9	2,647.2	2,966.5	0.00	0.00	TOP_GAS.MBL (SSTVD)
8,800.0	0.00	0.00	8,227.9	1,338.9	2,647.2	2,966.5	0.00	0.00	
8,900.0	0.00	0.00	8,327.9	1,338.9	2,647.2	2,966.5	0.00	0.00	
9,000.0	0.00	0.00	8,427.9	1,338.9	2,647.2	2,966.5	0.00	0.00	
9,100.0	0.00	0.00	8,527.9	1,338.9	2,647.2	2,966.5	0.00	0.00	
9,200.0	0.00	0.00	8,627.9	1,338.9	2,647.2	2,966.5	0.00	0.00	
9,300.0	0.00	0.00	8,727.9	1,338.9	2,647.2	2,966.5	0.00	0.00	
9,400.0	0.00	0.00	8,827.9	1,338.9	2,647.2	2,966.5	0.00	0.00	
9,500.0	0.00	0.00	8,927.9	1,338.9	2,647.2	2,966.5	0.00	0.00	
9,600.0	0.00	0.00	9,027.9	1,338.9	2,647.2	2,966.5	0.00	0.00	

## Planning Report

<b>Database:</b>	USA EDM 5000 Multi Users DB	<b>Local Co-ordinate Reference:</b>	Well BATTLEMENT MESA 43A-26 795
<b>Company:</b>	Caerus Oil & Gas	<b>TVD Reference:</b>	30' KB @ 8994.0usft
<b>Project:</b>	Garfield County, CO (UTM 12N)	<b>MD Reference:</b>	30' KB @ 8994.0usft
<b>Site:</b>	S26-T7S-R95W (26K)	<b>North Reference:</b>	True
<b>Well:</b>	BATTLEMENT MESA 43A-26 795	<b>Survey Calculation Method:</b>	Minimum Curvature
<b>Wellbore:</b>	OH		
<b>Design:</b>	PLAN #1		

Planned Survey									
Measured Depth (usft)	Inclination (°)	Azimuth (°)	Vertical Depth (usft)	+N/-S (usft)	+E/-W (usft)	Vertical Section (usft)	Dogleg Rate (°/100usft)	Build Rate (°/100u)	Comments / Formations
9,700.0	0.00	0.00	9,127.9	1,338.9	2,647.2	2,966.5	0.00	0.00	
9,800.0	0.00	0.00	9,227.9	1,338.9	2,647.2	2,966.5	0.00	0.00	
9,900.0	0.00	0.00	9,327.9	1,338.9	2,647.2	2,966.5	0.00	0.00	
10,000.0	0.00	0.00	9,427.9	1,338.9	2,647.2	2,966.5	0.00	0.00	
10,008.1	0.00	0.00	9,436.0	1,338.9	2,647.2	2,966.5	0.00	0.00	CAMEO.MBL (SSTVD)
10,100.0	0.00	0.00	9,527.9	1,338.9	2,647.2	2,966.5	0.00	0.00	
10,200.0	0.00	0.00	9,627.9	1,338.9	2,647.2	2,966.5	0.00	0.00	
10,300.0	0.00	0.00	9,727.9	1,338.9	2,647.2	2,966.5	0.00	0.00	
10,400.0	0.00	0.00	9,827.9	1,338.9	2,647.2	2,966.5	0.00	0.00	
10,500.0	0.00	0.00	9,927.9	1,338.9	2,647.2	2,966.5	0.00	0.00	
10,533.1	0.00	0.00	9,961.0	1,338.9	2,647.2	2,966.5	0.00	0.00	ROLLINS.MBL (SSTVD)
10,600.0	0.00	0.00	10,027.9	1,338.9	2,647.2	2,966.5	0.00	0.00	
10,683.1	0.00	0.00	10,111.0	1,338.9	2,647.2	2,966.5	0.00	0.00	TD at 10683.1 - TD.MBL (SSTVD) - BM 43A-26

Targets									
Target Name	Dip Angle (°)	Dip Dir. (°)	TVD (usft)	+N/-S (usft)	+E/-W (usft)	Northing (usft)	Easting (usft)	Latitude	Longitude
BM 43A-26 795 PBHL - hit/miss target - Shape - Circle (radius 50.0)	0.00	0.00	10,111.0	1,338.9	2,647.2	14,325,060.00	2,499,953.90	39.408206	-107.957249

Formations					
Measured Depth (usft)	Vertical Depth (usft)	Name	Lithology	Dip (°)	Dip Direction (°)
7,534.8	7,013.0	OHIO_CREEK.MBL (SSTVD)		0.00	
7,989.4	7,433.0	WILLIAMS_FORK.MBL (SSTVD)		0.00	
8,792.1	8,220.0	TOP_GAS.MBL (SSTVD)		0.00	
10,008.1	9,436.0	CAMEO.MBL (SSTVD)		0.00	
10,533.1	9,961.0	ROLLINS.MBL (SSTVD)		0.00	
10,683.1	10,111.0	TD.MBL (SSTVD)		0.00	

Plan Annotations				
Measured Depth (usft)	Vertical Depth (usft)	Local Coordinates		Comment
		+N/-S (usft)	+E/-W (usft)	
220.0	220.0	0.0	0.0	Start Build 3.00
972.3	953.0	66.0	130.5	Start 6967.6 hold at 972.3 MD
7,939.9	7,387.0	1,272.8	2,516.7	Start Drop -3.00
8,692.1	8,120.0	1,338.9	2,647.2	Start 1991.0 hold at 8692.1 MD
10,683.1	10,111.0	1,338.9	2,647.2	TD at 10683.1