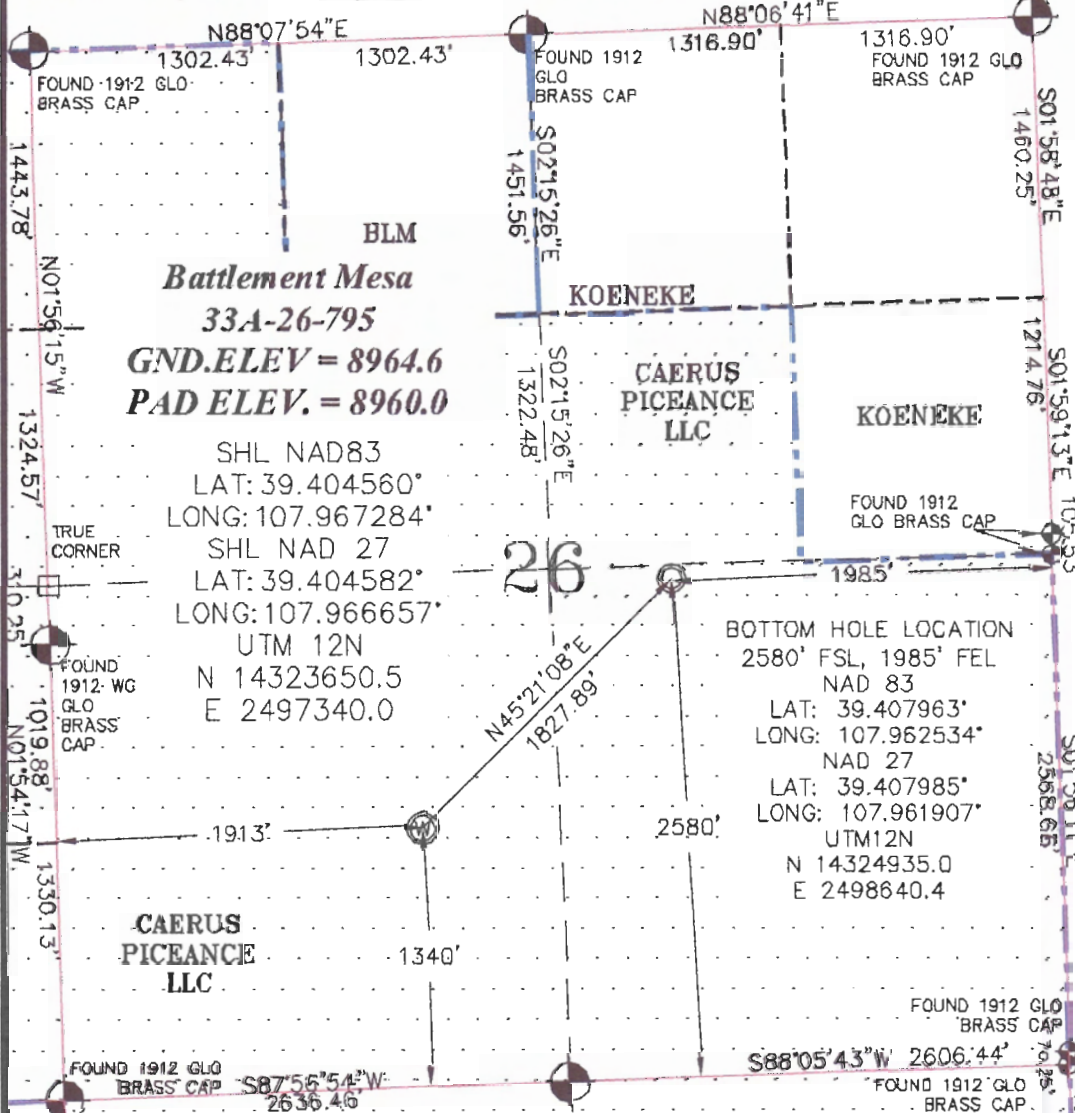


SEC. 26, T. 7 S., R. 95 W. OF THE 6TH P.M.

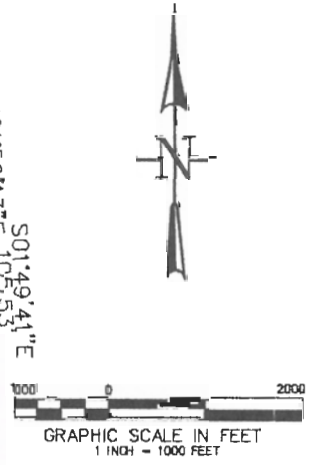
PLAT 1  
BM 26N-795  
PAD  
LOCATION



BLM  
**Battlement Mesa**  
**33A-26-795**  
**GND.ELEV = 8964.6**  
**PAD ELEV. = 8960.0**

SHL NAD83  
LAT: 39.404560°  
LONG: 107.967284°  
SHL NAD 27  
LAT: 39.404582°  
LONG: 107.966657°  
UTM 12N  
N 14323650.5  
E 2497340.0

**BOTTOM HOLE LOCATION**  
2580' FSL, 1985' FEL  
NAD 83  
LAT: 39.407963°  
LONG: 107.962534°  
NAD 27  
LAT: 39.407985°  
LONG: 107.961907°  
UTM12N  
N 14324935.0  
E 2498640.4

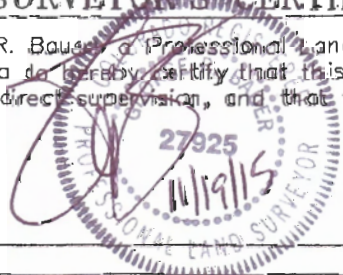


- LEGEND-**
- FIELD SURVEYED SECTION CORNER LOCATIONS
  - FIELD SURVEYED WELL LOCATION
  - CALCULATED BOTTOM HOLE LOCATION

**THIS WELL LOCATION PLAT WAS PREPARED FOR CAERUS PICEANCE LLC TO LOCATE THE BATTLEMENT MESA #33A-26-795 WELL, 1340 FEET FROM THE SOUTH LINE AND 1913 FEET FROM THE WEST LINE IN THE SW1/4 OF SECTION 26, T. 7 S., R. 95 W. OF THE 6TH P.M. GARFIELD COUNTY, COLORADO.**

**SURVEYOR'S CERTIFICATE**

I, George R. Bauso, a Professional Land Surveyor in the State of Colorado do hereby certify that this Survey was made under my direct supervision, and that this Plat represents said Survey.



**REFERENCE NOTES**

- 1) T. 7 S., R. 95 W., 6TH P.M. GLO PLAT.
- 2) U.S.G.S. QUAD: PARACHUTE, CO
- 3) ELEVATIONS BASED ON N.A.V.D. 1988 LIDAR BASED CONTROL PT CP MON B
- 4) LATITUDES AND LONGITUDES ARE BASED ON NAD 83, COLORADO CENTRAL ZONE.
- 5) GPS OPERATOR: ROBERT WOOD, OBSERVED A PDOP OF 1.8.
- 6) ALL GPS OBSERVATIONS ARE IN COMPLIANCE WITH COGCC RULE NO. 215.
- 7) SURFACE AND BOTTOM HOLE LOCATIONS ARE MEASURED 90° FROM SECTION LINES.



| <b>WELL LOCATION PLAT</b>                                                        |                       |
|----------------------------------------------------------------------------------|-----------------------|
| CONSTRUCTION SURVEYS, INC.<br>0012 SUNRISE BLVD. SULT, CO<br>81652 (970)876-5753 |                       |
| SURVEY BY: REW 10/13/15                                                          | PDOP: 1.8             |
| DRAWN BY: REW 11/19/15                                                           | DWG: CAERUS\BM26N-795 |
| REVISED:                                                                         |                       |