



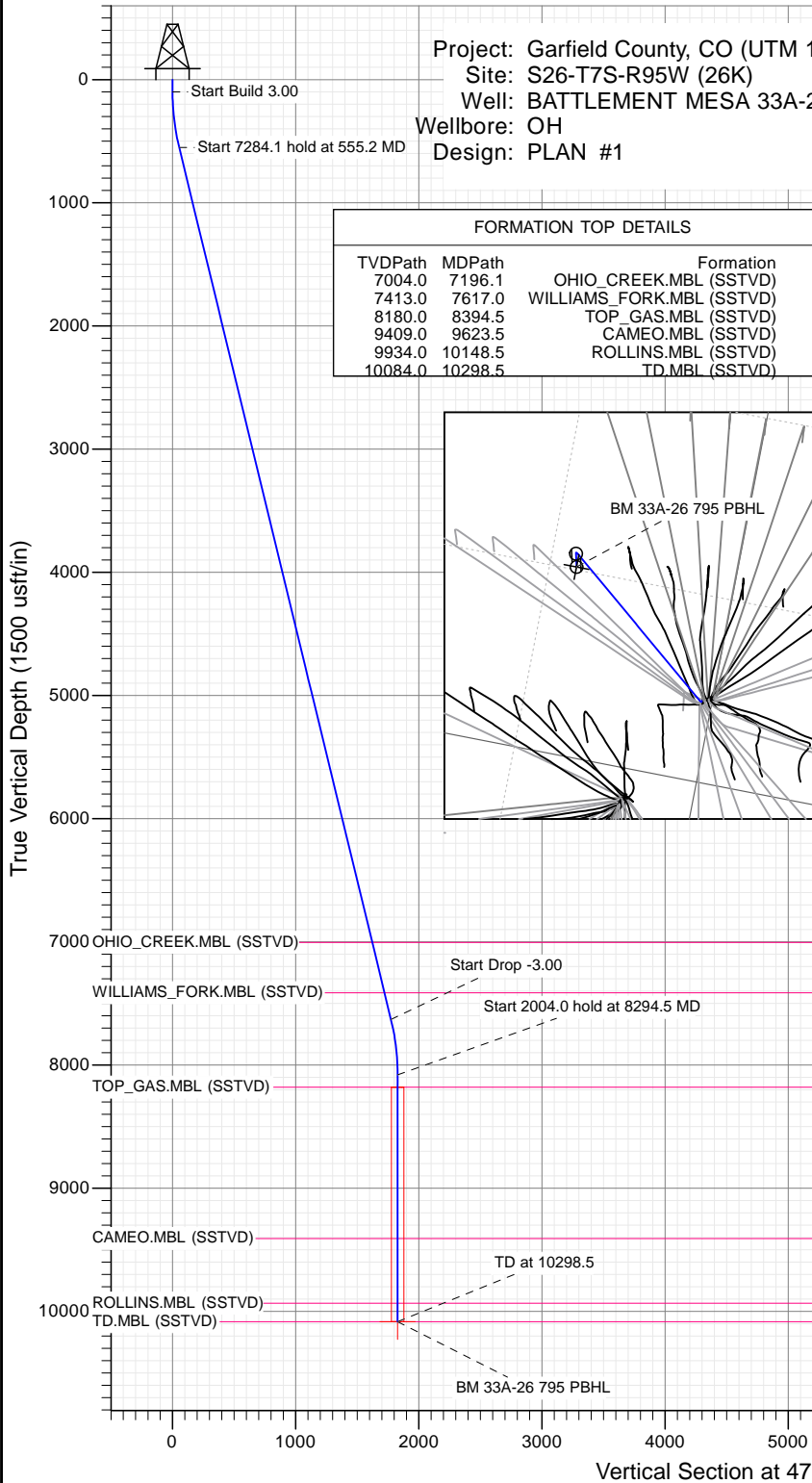
SECTION DETAILS

Sec	MD	Inc	Azi	TVD	+N-S	+E-W	Dleg	TFace	Vsect	Target
1	0.0	0.00	0.00	0.0	0.0	0.0	0.00	0.00	0.0	
2	100.0	0.00	0.00	100.0	0.0	0.0	0.00	0.00	0.0	
3	555.2	13.66	47.28	550.9	36.6	39.7	3.00	47.28	54.0	
4	7839.3	13.66	47.28	7629.1	1203.4	1303.2	0.00	0.00	1773.8	
5	8294.5	0.00	0.00	8080.0	1240.1	1342.9	3.00	180.00	1827.8	
6	10298.5	0.00	0.00	10084.0	1240.1	1342.9	0.00	0.00	1827.8	BM 33A-26 795 PBHL

Project: Garfield County, CO (UTM 12)
 Site: S26-T7S-R95W (26K)
 Well: BATTLEMENT MESA 33A-26
 Wellbore: OH
 Design: PLAN #1

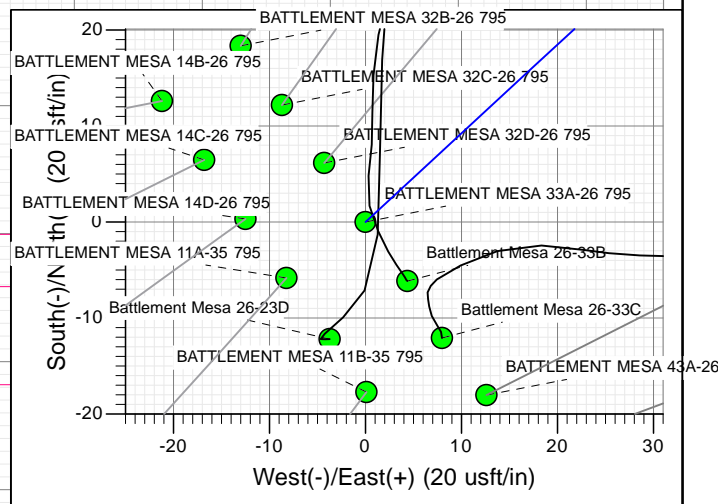
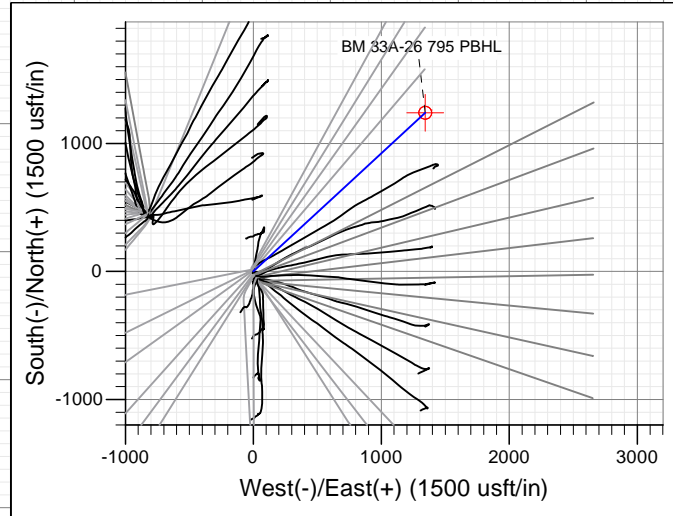
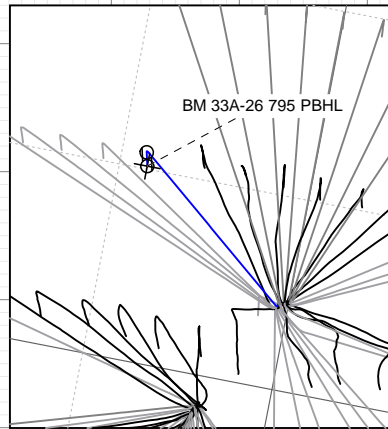
PLAN #1
 BATTLEMENT MESA 33A-26 795
 15XXX; LR
 30 KB @ 8964.0usft
 Ground Level @ 8964.0
 NAD 1927 - Western US
 Well BATTLEMENT MESA 33A-26 795, True North

Type	Target	Azimuth	Origin	Type	N/S	E/W	From
TD	No Target (Freehand)	47.28	Slot		0.0	0.0	TVD
Name		TVD	+N-S	+E/W	Latitude	Longitude	
BM 33A-26 795 PBHL		10084.0	1240.1	1342.9	39.407985	-107.961907	



FORMATION TOP DETAILS

TVDPPath	MDPath	Formation
7004.0	7196.1	OHIO_CREEK.MBL (SSTVD)
7413.0	7617.0	WILLIAMS_FORK.MBL (SSTVD)
8180.0	8394.5	TOP_GAS.MBL (SSTVD)
9409.0	9623.5	CAMEO.MBL (SSTVD)
9934.0	10148.5	ROLLINS.MBL (SSTVD)
10084.0	10298.5	TD.MBL (SSTVD)



TM
 Azimuths to True North
 Magnetic North: 9.45°
 Magnetic Field
 Strength: 51901.2snT
 Dip Angle: 65.63°
 Date: 11/12/2015
 Model: HDGM

CASING DETAILS

No casing data is available



WELL DETAILS: BATTLEMENT MESA 33A-26 795

+N-S	+E-W	Northing	Ground Level:	8964.0	Latitude	Longitude
0.0	0.0	14323650.50	Easting	2497340.00	39.404582	-107.966657



Planning Report

Database:	USA EDM 5000 Multi Users DB	Local Co-ordinate Reference:	Well BATTLEMENT MESA 33A-26 795
Company:	Caerus Oil & Gas	TVD Reference:	30' KB @ 8994.0usft
Project:	Garfield County, CO (UTM 12N)	MD Reference:	30' KB @ 8994.0usft
Site:	S26-T7S-R95W (26K)	North Reference:	True
Well:	BATTLEMENT MESA 33A-26 795	Survey Calculation Method:	Minimum Curvature
Wellbore:	OH		
Design:	PLAN #1		

Project Garfield County, CO (UTM 12N)			
Map System:	Universal Transverse Mercator (US Survey Feet)	System Datum:	Mean Sea Level
Geo Datum:	NAD 1927 - Western US		
Map Zone:	Zone 12N (114 W to 108 W)		

Site S26-T7S-R95W (26K)			
Site Position:		Northing:	14,324,088.50 usft
From:	Map	Easting:	2,496,462.30 usft
Position Uncertainty:	0.0 usft	Slot Radius:	13-3/16"
		Latitude:	39.405864
		Longitude:	-107.969708
		Grid Convergence:	1.92 °

Well BATTLEMENT MESA 33A-26 795			
Well Position	+N/-S	0.0 usft	Northing: 14,323,650.50 usft
	+E/-W	0.0 usft	Easting: 2,497,340.00 usft
Position Uncertainty		0.0 usft	Wellhead Elevation: 0.0 usft
			Latitude: 39.404582
			Longitude: -107.966657
			Ground Level: 8,964.0 usft

Wellbore OH					
Magnetics	Model Name	Sample Date	Declination (°)	Dip Angle (°)	Field Strength (nT)
	HDGM	11/12/2015	9.45	65.63	51,901

Design PLAN #1				
Audit Notes:				
Version:	Phase:	PLAN	Tie On Depth:	0.0
Vertical Section:	Depth From (TVD) (usft)	+N/-S (usft)	+E/-W (usft)	Direction (°)
	0.0	0.0	0.0	47.28

Plan Sections										
Measured Depth (usft)	Inclination (°)	Azimuth (°)	Vertical Depth (usft)	+N/-S (usft)	+E/-W (usft)	Dogleg Rate (°/100usft)	Build Rate (°/100usft)	Turn Rate (°/100usft)	TFO (°)	Target
0.0	0.00	0.00	0.0	0.0	0.0	0.00	0.00	0.00	0.00	
100.0	0.00	0.00	100.0	0.0	0.0	0.00	0.00	0.00	0.00	
555.2	13.66	47.28	550.9	36.6	39.7	3.00	3.00	0.00	47.28	
7,839.3	13.66	47.28	7,629.1	1,203.4	1,303.2	0.00	0.00	0.00	0.00	
8,294.5	0.00	0.00	8,080.0	1,240.1	1,342.9	3.00	-3.00	0.00	180.00	
10,298.5	0.00	0.00	10,084.0	1,240.1	1,342.9	0.00	0.00	0.00	0.00	BM 33A-26 795 PBHL

Planning Report

Database:	USA EDM 5000 Multi Users DB	Local Co-ordinate Reference:	Well BATTLEMENT MESA 33A-26 795
Company:	Caerus Oil & Gas	TVD Reference:	30' KB @ 8994.0usft
Project:	Garfield County, CO (UTM 12N)	MD Reference:	30' KB @ 8994.0usft
Site:	S26-T7S-R95W (26K)	North Reference:	True
Well:	BATTLEMENT MESA 33A-26 795	Survey Calculation Method:	Minimum Curvature
Wellbore:	OH		
Design:	PLAN #1		

Planned Survey									
Measured Depth (usft)	Inclination (°)	Azimuth (°)	Vertical Depth (usft)	+N/-S (usft)	+E/-W (usft)	Vertical Section (usft)	Dogleg Rate (°/100usft)	Build Rate (°/100u)	Comments / Formations
0.0	0.00	0.00	0.0	0.0	0.0	0.0	0.00	0.00	
100.0	0.00	0.00	100.0	0.0	0.0	0.0	0.00	0.00	Start Build 3.00
200.0	3.00	47.28	200.0	1.8	1.9	2.6	3.00	3.00	
300.0	6.00	47.28	299.6	7.1	7.7	10.5	3.00	3.00	
400.0	9.00	47.28	398.8	16.0	17.3	23.5	3.00	3.00	
500.0	12.00	47.28	497.1	28.3	30.7	41.7	3.00	3.00	
555.2	13.66	47.28	550.9	36.6	39.7	54.0	3.00	3.00	Start 7284.1 hold at 555.2 MD
600.0	13.66	47.28	594.4	43.8	47.4	64.6	0.00	0.00	
700.0	13.66	47.28	691.6	59.8	64.8	88.2	0.00	0.00	
800.0	13.66	47.28	788.8	75.8	82.1	111.8	0.00	0.00	
900.0	13.66	47.28	886.0	91.9	99.5	135.4	0.00	0.00	
1,000.0	13.66	47.28	983.1	107.9	116.8	159.0	0.00	0.00	
1,100.0	13.66	47.28	1,080.3	123.9	134.2	182.6	0.00	0.00	
1,200.0	13.66	47.28	1,177.5	139.9	151.5	206.2	0.00	0.00	
1,300.0	13.66	47.28	1,274.6	155.9	168.9	229.8	0.00	0.00	
1,400.0	13.66	47.28	1,371.8	172.0	186.2	253.5	0.00	0.00	
1,500.0	13.66	47.28	1,469.0	188.0	203.6	277.1	0.00	0.00	
1,600.0	13.66	47.28	1,566.2	204.0	220.9	300.7	0.00	0.00	
1,700.0	13.66	47.28	1,663.3	220.0	238.2	324.3	0.00	0.00	
1,800.0	13.66	47.28	1,760.5	236.0	255.6	347.9	0.00	0.00	
1,900.0	13.66	47.28	1,857.7	252.0	272.9	371.5	0.00	0.00	
2,000.0	13.66	47.28	1,954.9	268.1	290.3	395.1	0.00	0.00	
2,100.0	13.66	47.28	2,052.0	284.1	307.6	418.7	0.00	0.00	
2,200.0	13.66	47.28	2,149.2	300.1	325.0	442.3	0.00	0.00	
2,300.0	13.66	47.28	2,246.4	316.1	342.3	466.0	0.00	0.00	
2,400.0	13.66	47.28	2,343.5	332.1	359.7	489.6	0.00	0.00	
2,500.0	13.66	47.28	2,440.7	348.2	377.0	513.2	0.00	0.00	
2,600.0	13.66	47.28	2,537.9	364.2	394.4	536.8	0.00	0.00	
2,700.0	13.66	47.28	2,635.1	380.2	411.7	560.4	0.00	0.00	
2,800.0	13.66	47.28	2,732.2	396.2	429.1	584.0	0.00	0.00	
2,900.0	13.66	47.28	2,829.4	412.2	446.4	607.6	0.00	0.00	
3,000.0	13.66	47.28	2,926.6	428.2	463.7	631.2	0.00	0.00	
3,100.0	13.66	47.28	3,023.8	444.3	481.1	654.8	0.00	0.00	
3,200.0	13.66	47.28	3,120.9	460.3	498.4	678.5	0.00	0.00	
3,300.0	13.66	47.28	3,218.1	476.3	515.8	702.1	0.00	0.00	
3,400.0	13.66	47.28	3,315.3	492.3	533.1	725.7	0.00	0.00	
3,500.0	13.66	47.28	3,412.4	508.3	550.5	749.3	0.00	0.00	
3,600.0	13.66	47.28	3,509.6	524.4	567.8	772.9	0.00	0.00	
3,700.0	13.66	47.28	3,606.8	540.4	585.2	796.5	0.00	0.00	
3,800.0	13.66	47.28	3,704.0	556.4	602.5	820.1	0.00	0.00	
3,900.0	13.66	47.28	3,801.1	572.4	619.9	843.7	0.00	0.00	
4,000.0	13.66	47.28	3,898.3	588.4	637.2	867.3	0.00	0.00	
4,100.0	13.66	47.28	3,995.5	604.4	654.6	891.0	0.00	0.00	
4,200.0	13.66	47.28	4,092.7	620.5	671.9	914.6	0.00	0.00	
4,300.0	13.66	47.28	4,189.8	636.5	689.2	938.2	0.00	0.00	
4,400.0	13.66	47.28	4,287.0	652.5	706.6	961.8	0.00	0.00	
4,500.0	13.66	47.28	4,384.2	668.5	723.9	985.4	0.00	0.00	
4,600.0	13.66	47.28	4,481.3	684.5	741.3	1,009.0	0.00	0.00	
4,700.0	13.66	47.28	4,578.5	700.6	758.6	1,032.6	0.00	0.00	
4,800.0	13.66	47.28	4,675.7	716.6	776.0	1,056.2	0.00	0.00	
4,900.0	13.66	47.28	4,772.9	732.6	793.3	1,079.8	0.00	0.00	
5,000.0	13.66	47.28	4,870.0	748.6	810.7	1,103.4	0.00	0.00	

Planning Report

Database:	USA EDM 5000 Multi Users DB	Local Co-ordinate Reference:	Well BATTLEMENT MESA 33A-26 795
Company:	Caerus Oil & Gas	TVD Reference:	30' KB @ 8994.0usft
Project:	Garfield County, CO (UTM 12N)	MD Reference:	30' KB @ 8994.0usft
Site:	S26-T7S-R95W (26K)	North Reference:	True
Well:	BATTLEMENT MESA 33A-26 795	Survey Calculation Method:	Minimum Curvature
Wellbore:	OH		
Design:	PLAN #1		

Planned Survey									
Measured Depth (usft)	Inclination (°)	Azimuth (°)	Vertical Depth (usft)	+N/-S (usft)	+E/-W (usft)	Vertical Section (usft)	Dogleg Rate (°/100usft)	Build Rate (°/100u)	Comments / Formations
5,100.0	13.66	47.28	4,967.2	764.6	828.0	1,127.1	0.00	0.00	
5,200.0	13.66	47.28	5,064.4	780.6	845.4	1,150.7	0.00	0.00	
5,300.0	13.66	47.28	5,161.6	796.7	862.7	1,174.3	0.00	0.00	
5,400.0	13.66	47.28	5,258.7	812.7	880.1	1,197.9	0.00	0.00	
5,500.0	13.66	47.28	5,355.9	828.7	897.4	1,221.5	0.00	0.00	
5,600.0	13.66	47.28	5,453.1	844.7	914.7	1,245.1	0.00	0.00	
5,700.0	13.66	47.28	5,550.2	860.7	932.1	1,268.7	0.00	0.00	
5,800.0	13.66	47.28	5,647.4	876.8	949.4	1,292.3	0.00	0.00	
5,900.0	13.66	47.28	5,744.6	892.8	966.8	1,315.9	0.00	0.00	
6,000.0	13.66	47.28	5,841.8	908.8	984.1	1,339.6	0.00	0.00	
6,100.0	13.66	47.28	5,938.9	924.8	1,001.5	1,363.2	0.00	0.00	
6,200.0	13.66	47.28	6,036.1	940.8	1,018.8	1,386.8	0.00	0.00	
6,300.0	13.66	47.28	6,133.3	956.8	1,036.2	1,410.4	0.00	0.00	
6,400.0	13.66	47.28	6,230.4	972.9	1,053.5	1,434.0	0.00	0.00	
6,500.0	13.66	47.28	6,327.6	988.9	1,070.9	1,457.6	0.00	0.00	
6,600.0	13.66	47.28	6,424.8	1,004.9	1,088.2	1,481.2	0.00	0.00	
6,700.0	13.66	47.28	6,522.0	1,020.9	1,105.6	1,504.8	0.00	0.00	
6,800.0	13.66	47.28	6,619.1	1,036.9	1,122.9	1,528.4	0.00	0.00	
6,900.0	13.66	47.28	6,716.3	1,053.0	1,140.2	1,552.1	0.00	0.00	
7,000.0	13.66	47.28	6,813.5	1,069.0	1,157.6	1,575.7	0.00	0.00	
7,100.0	13.66	47.28	6,910.7	1,085.0	1,174.9	1,599.3	0.00	0.00	
7,196.1	13.66	47.28	7,004.0	1,100.4	1,191.6	1,622.0	0.00	0.00	OHIO_CREEK.MBL (SSTVD)
7,200.0	13.66	47.28	7,007.8	1,101.0	1,192.3	1,622.9	0.00	0.00	
7,300.0	13.66	47.28	7,105.0	1,117.0	1,209.6	1,646.5	0.00	0.00	
7,400.0	13.66	47.28	7,202.2	1,133.0	1,227.0	1,670.1	0.00	0.00	
7,500.0	13.66	47.28	7,299.3	1,149.1	1,244.3	1,693.7	0.00	0.00	
7,600.0	13.66	47.28	7,396.5	1,165.1	1,261.7	1,717.3	0.00	0.00	
7,617.0	13.66	47.28	7,413.0	1,167.8	1,264.6	1,721.3	0.00	0.00	WILLIAMS_FORK.MBL (SSTVD)
7,700.0	13.66	47.28	7,493.7	1,181.1	1,279.0	1,740.9	0.00	0.00	
7,800.0	13.66	47.28	7,590.9	1,197.1	1,296.4	1,764.6	0.00	0.00	
7,839.3	13.66	47.28	7,629.1	1,203.4	1,303.2	1,773.8	0.00	0.00	Start Drop -3.00
7,900.0	11.84	47.28	7,688.3	1,212.5	1,313.0	1,787.2	3.00	-3.00	
8,000.0	8.84	47.28	7,786.6	1,224.7	1,326.2	1,805.2	3.00	-3.00	
8,100.0	5.84	47.28	7,885.8	1,233.3	1,335.6	1,817.9	3.00	-3.00	
8,200.0	2.84	47.28	7,985.5	1,238.5	1,341.1	1,825.5	3.00	-3.00	
8,294.5	0.00	0.00	8,080.0	1,240.1	1,342.9	1,827.8	3.00	-3.00	Start 2004.0 hold at 8294.5 MD
8,300.0	0.00	0.00	8,085.5	1,240.1	1,342.9	1,827.8	0.00	0.00	
8,394.5	0.00	0.00	8,180.0	1,240.1	1,342.9	1,827.8	0.00	0.00	TOP_GAS.MBL (SSTVD)
8,400.0	0.00	0.00	8,185.5	1,240.1	1,342.9	1,827.8	0.00	0.00	
8,500.0	0.00	0.00	8,285.5	1,240.1	1,342.9	1,827.8	0.00	0.00	
8,600.0	0.00	0.00	8,385.5	1,240.1	1,342.9	1,827.8	0.00	0.00	
8,700.0	0.00	0.00	8,485.5	1,240.1	1,342.9	1,827.8	0.00	0.00	
8,800.0	0.00	0.00	8,585.5	1,240.1	1,342.9	1,827.8	0.00	0.00	
8,900.0	0.00	0.00	8,685.5	1,240.1	1,342.9	1,827.8	0.00	0.00	
9,000.0	0.00	0.00	8,785.5	1,240.1	1,342.9	1,827.8	0.00	0.00	
9,100.0	0.00	0.00	8,885.5	1,240.1	1,342.9	1,827.8	0.00	0.00	
9,200.0	0.00	0.00	8,985.5	1,240.1	1,342.9	1,827.8	0.00	0.00	
9,300.0	0.00	0.00	9,085.5	1,240.1	1,342.9	1,827.8	0.00	0.00	
9,400.0	0.00	0.00	9,185.5	1,240.1	1,342.9	1,827.8	0.00	0.00	
9,500.0	0.00	0.00	9,285.5	1,240.1	1,342.9	1,827.8	0.00	0.00	
9,600.0	0.00	0.00	9,385.5	1,240.1	1,342.9	1,827.8	0.00	0.00	
9,623.5	0.00	0.00	9,409.0	1,240.1	1,342.9	1,827.8	0.00	0.00	CAMEO.MBL (SSTVD)

Planning Report

Database:	USA EDM 5000 Multi Users DB	Local Co-ordinate Reference:	Well BATTLEMENT MESA 33A-26 795
Company:	Caerus Oil & Gas	TVD Reference:	30' KB @ 8994.0usft
Project:	Garfield County, CO (UTM 12N)	MD Reference:	30' KB @ 8994.0usft
Site:	S26-T7S-R95W (26K)	North Reference:	True
Well:	BATTLEMENT MESA 33A-26 795	Survey Calculation Method:	Minimum Curvature
Wellbore:	OH		
Design:	PLAN #1		

Planned Survey									
Measured Depth (usft)	Inclination (°)	Azimuth (°)	Vertical Depth (usft)	+N/-S (usft)	+E/-W (usft)	Vertical Section (usft)	Dogleg Rate (°/100usft)	Build Rate (°/100u)	Comments / Formations
9,700.0	0.00	0.00	9,485.5	1,240.1	1,342.9	1,827.8	0.00	0.00	
9,800.0	0.00	0.00	9,585.5	1,240.1	1,342.9	1,827.8	0.00	0.00	
9,900.0	0.00	0.00	9,685.5	1,240.1	1,342.9	1,827.8	0.00	0.00	
10,000.0	0.00	0.00	9,785.5	1,240.1	1,342.9	1,827.8	0.00	0.00	
10,100.0	0.00	0.00	9,885.5	1,240.1	1,342.9	1,827.8	0.00	0.00	
10,148.5	0.00	0.00	9,934.0	1,240.1	1,342.9	1,827.8	0.00	0.00	ROLLINS.MBL (SSTVD)
10,200.0	0.00	0.00	9,985.5	1,240.1	1,342.9	1,827.8	0.00	0.00	
10,298.5	0.00	0.00	10,084.0	1,240.1	1,342.9	1,827.8	0.00	0.00	TD at 10298.5 - TD.MBL (SSTVD) - BM 33A-26

Targets											
Target Name	- hit/miss target	- Shape	Dip Angle (°)	Dip Dir. (°)	TVD (usft)	+N/-S (usft)	+E/-W (usft)	Northing (usft)	Easting (usft)	Latitude	Longitude
BM 33A-26 795 PBHL			0.00	0.00	10,084.0	1,240.1	1,342.9	14,324,935.00	2,498,640.40	39.407985	-107.961907
- plan hits target center											
- Circle (radius 50.0)											

Formations						
Measured Depth (usft)	Vertical Depth (usft)	Name	Lithology	Dip (°)	Dip Direction (°)	
7,196.1	7,004.0	OHIO_CREEK.MBL (SSTVD)		0.00		
7,617.0	7,413.0	WILLIAMS_FORK.MBL (SSTVD)		0.00		
8,394.5	8,180.0	TOP_GAS.MBL (SSTVD)		0.00		
9,623.5	9,409.0	CAMEO.MBL (SSTVD)		0.00		
10,148.5	9,934.0	ROLLINS.MBL (SSTVD)		0.00		
10,298.5	10,084.0	TD.MBL (SSTVD)		0.00		

Plan Annotations					
Measured Depth (usft)	Vertical Depth (usft)	Local Coordinates		Comment	
		+N/-S (usft)	+E/-W (usft)		
100.0	100.0	0.0	0.0	Start Build 3.00	
555.2	550.9	36.6	39.7	Start 7284.1 hold at 555.2 MD	
7,839.3	7,629.1	1,203.4	1,303.2	Start Drop -3.00	
8,294.5	8,080.0	1,240.1	1,342.9	Start 2004.0 hold at 8294.5 MD	
10,298.5	10,084.0	1,240.1	1,342.9	TD at 10298.5	