



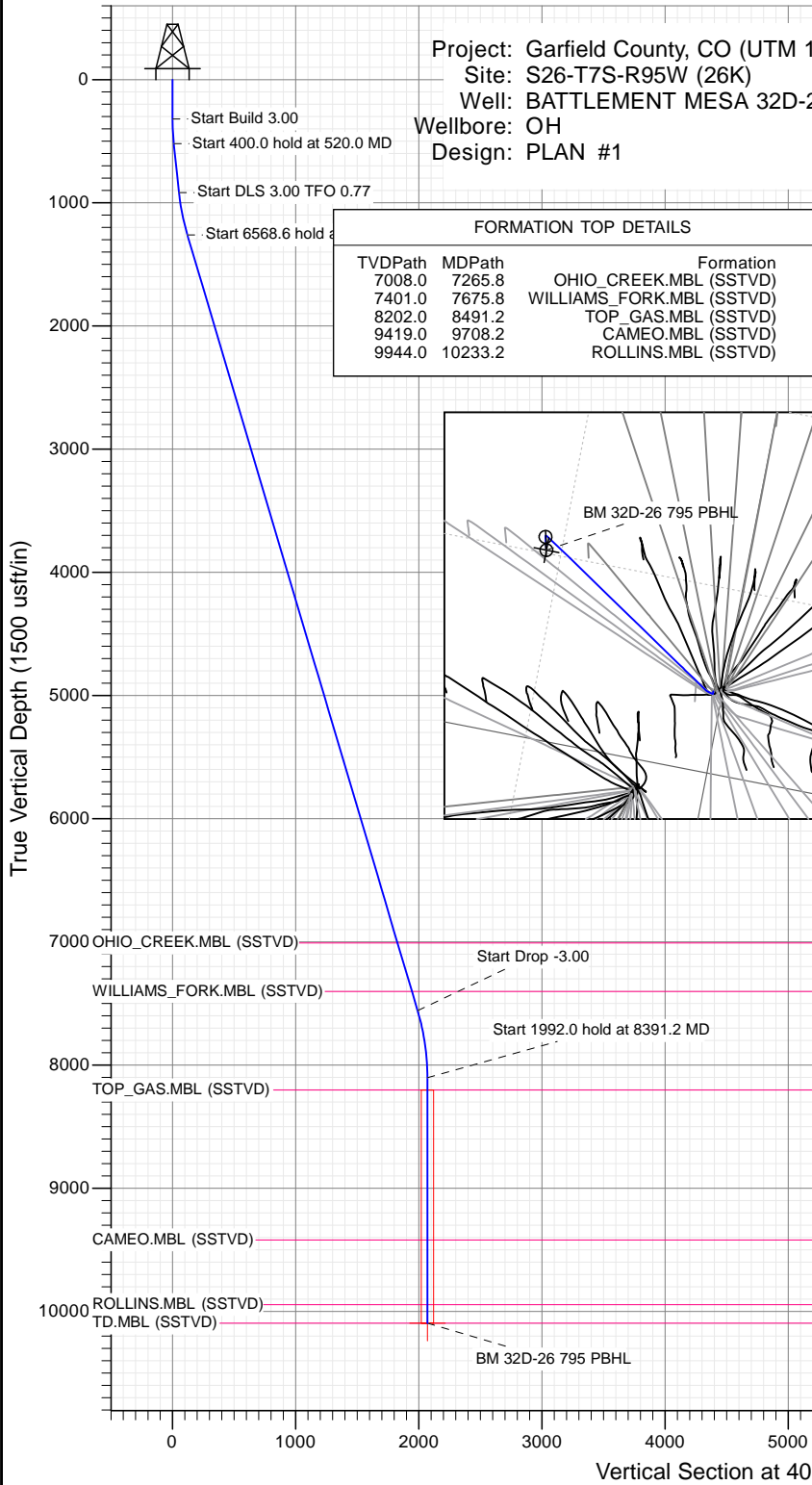
SECTION DETAILS

Sec	MD	Inc	Azi	TVD	+N-S	+E-W	Dleg	TFace	V Sect	Target
1	0.0	0.00	0.00	0.0	0.0	0.0	0.00	0.00	0.0	
2	320.0	0.00	0.00	320.0	0.0	0.0	0.00	0.00	0.0	
3	520.0	6.00	40.00	519.6	8.0	6.7	3.00	40.00	10.5	
4	920.0	6.00	40.00	917.4	40.0	33.6	0.00	0.00	52.3	
5	1271.3	16.54	40.50	1261.5	92.3	78.0	3.00	0.77	120.8	
6	7839.9	16.54	40.50	7558.4	1514.1	1292.2	0.00	0.00	1990.6	
7	8391.2	0.00	0.00	8102.0	1574.2	1343.5	3.00	180.00	2069.6	
8	10383.2	0.00	0.00	10094.0	1574.2	1343.5	0.00	0.00	2069.6	BM 32D-26 795 PBHL

Project: Garfield County, CO (UTM 12
 Site: S26-T7S-R95W (26K)
 Well: BATTLEMENT MESA 32D-26
 Wellbore: OH
 Design: PLAN #1

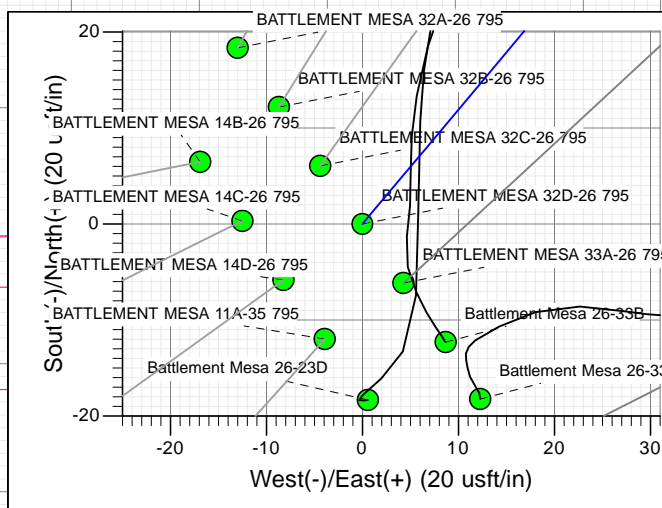
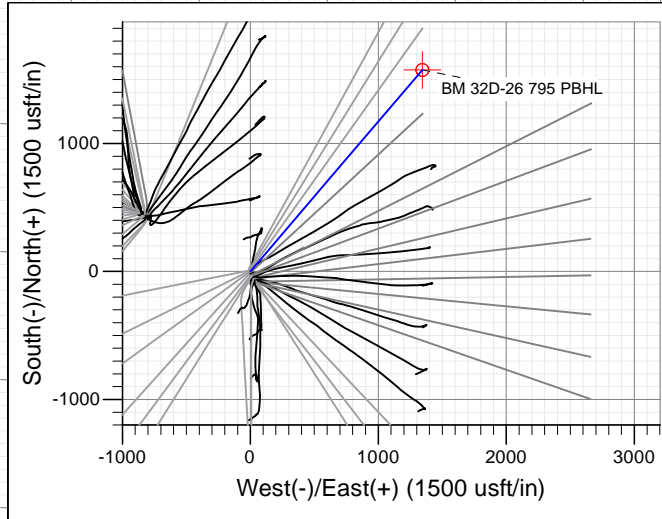
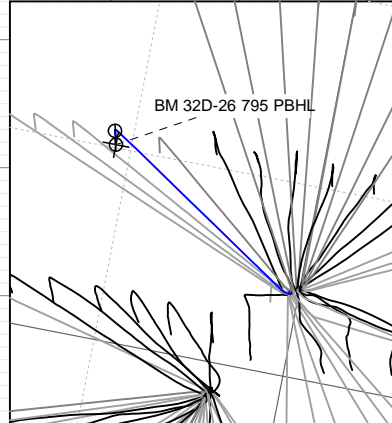
PLAN #1
 BATTLEMENT MESA 32D-26 795
 15XXX; LR
 30 KB @ 8964.0usft
 Ground Level @ 8964.0
 NAD 1927 - Western US
 Well BATTLEMENT MESA 32D-26 795, True North

Type	Target	Azimuth	Origin	Type	N/S	E/W	From
TD	No Target (Freehand)	40.48	Slot		0.0	0.0	TVD
Name		TVD	+N-S	+E/W	Latitude	Longitude	
BM 32D-26 795 PBHL		10094.0	1574.2	1343.5	39.408919	-107.961920	



FORMATION TOP DETAILS

TVDPath	MDPath	Formation
7008.0	7265.8	OHIO_CREEK.MBL (SSTVD)
7401.0	7675.8	WILLIAMS_FORK.MBL (SSTVD)
8202.0	8491.2	TOP_GAS.MBL (SSTVD)
9419.0	9708.2	CAMEO.MBL (SSTVD)
9944.0	10233.2	ROLLINS.MBL (SSTVD)



T M
 Azimuths to True North
 Magnetic North: 9.45°
 Magnetic Field
 Strength: 51901.2snT
 Dip Angle: 65.63°
 Date: 11/12/2015
 Model: HDGM

CASING DETAILS

No casing data is available



WELL DETAILS: BATTLEMENT MESA 32D-26 795

+N-S	+E-W	Northing	Ground Level:	8964.0	Latitude	Longitude
0.0	0.0	14323656.50	Easting	2497335.50	39.404599	-107.966672



Planning Report

Database:	USA EDM 5000 Multi Users DB	Local Co-ordinate Reference:	Well BATTLEMENT MESA 32D-26 795
Company:	Caerus Oil & Gas	TVD Reference:	30' KB @ 8994.0usft
Project:	Garfield County, CO (UTM 12N)	MD Reference:	30' KB @ 8994.0usft
Site:	S26-T7S-R95W (26K)	North Reference:	True
Well:	BATTLEMENT MESA 32D-26 795	Survey Calculation Method:	Minimum Curvature
Wellbore:	OH		
Design:	PLAN #1		

Project	Garfield County, CO (UTM 12N)		
Map System:	Universal Transverse Mercator (US Survey Feet)	System Datum:	Mean Sea Level
Geo Datum:	NAD 1927 - Western US		
Map Zone:	Zone 12N (114 W to 108 W)		

Site	S26-T7S-R95W (26K)				
Site Position:		Northing:	14,324,088.50 usft	Latitude:	39.405864
From:	Map	Easting:	2,496,462.30 usft	Longitude:	-107.969708
Position Uncertainty:	0.0 usft	Slot Radius:	13-3/16"	Grid Convergence:	1.92 °

Well	BATTLEMENT MESA 32D-26 795					
Well Position	+N/-S	0.0 usft	Northing:	14,323,656.50 usft	Latitude:	39.404599
	+E/-W	0.0 usft	Easting:	2,497,335.50 usft	Longitude:	-107.966672
Position Uncertainty		0.0 usft	Wellhead Elevation:	0.0 usft	Ground Level:	8,964.0 usft

Wellbore	OH				
Magnetics	Model Name	Sample Date	Declination	Dip Angle	Field Strength
			(°)	(°)	(nT)
	HDGM	11/12/2015	9.45	65.63	51,901

Design	PLAN #1			
Audit Notes:				
Version:	Phase:	PLAN	Tie On Depth:	0.0
Vertical Section:	Depth From (TVD)	+N/-S	+E/-W	Direction
	(usft)	(usft)	(usft)	(°)
	0.0	0.0	0.0	40.48

Plan Sections										
Measured Depth (usft)	Inclination (°)	Azimuth (°)	Vertical Depth (usft)	+N/-S (usft)	+E/-W (usft)	Dogleg Rate (°/100usft)	Build Rate (°/100usft)	Turn Rate (°/100usft)	TFO (°)	Target
0.0	0.00	0.00	0.0	0.0	0.0	0.00	0.00	0.00	0.00	
320.0	0.00	0.00	320.0	0.0	0.0	0.00	0.00	0.00	0.00	
520.0	6.00	40.00	519.6	8.0	6.7	3.00	3.00	0.00	40.00	
920.0	6.00	40.00	917.4	40.0	33.6	0.00	0.00	0.00	0.00	
1,271.3	16.54	40.50	1,261.5	92.3	78.0	3.00	3.00	0.14	0.77	
7,839.9	16.54	40.50	7,558.4	1,514.1	1,292.2	0.00	0.00	0.00	0.00	
8,391.2	0.00	0.00	8,102.0	1,574.2	1,343.5	3.00	-3.00	0.00	180.00	
10,383.2	0.00	0.00	10,094.0	1,574.2	1,343.5	0.00	0.00	0.00	0.00	BM 32D-26 795 PBHI

Planning Report

Database:	USA EDM 5000 Multi Users DB	Local Co-ordinate Reference:	Well BATTLEMENT MESA 32D-26 795
Company:	Caerus Oil & Gas	TVD Reference:	30' KB @ 8994.0usft
Project:	Garfield County, CO (UTM 12N)	MD Reference:	30' KB @ 8994.0usft
Site:	S26-T7S-R95W (26K)	North Reference:	True
Well:	BATTLEMENT MESA 32D-26 795	Survey Calculation Method:	Minimum Curvature
Wellbore:	OH		
Design:	PLAN #1		

Planned Survey									
Measured Depth (usft)	Inclination (°)	Azimuth (°)	Vertical Depth (usft)	+N/-S (usft)	+E/-W (usft)	Vertical Section (usft)	Dogleg Rate (°/100usft)	Build Rate (°/100u)	Comments / Formations
0.0	0.00	0.00	0.0	0.0	0.0	0.0	0.00	0.00	
100.0	0.00	0.00	100.0	0.0	0.0	0.0	0.00	0.00	
200.0	0.00	0.00	200.0	0.0	0.0	0.0	0.00	0.00	
300.0	0.00	0.00	300.0	0.0	0.0	0.0	0.00	0.00	
320.0	0.00	0.00	320.0	0.0	0.0	0.0	0.00	0.00	Start Build 3.00
400.0	2.40	40.00	400.0	1.3	1.1	1.7	3.00	3.00	
500.0	5.40	40.00	499.7	6.5	5.4	8.5	3.00	3.00	
520.0	6.00	40.00	519.6	8.0	6.7	10.5	3.00	3.00	Start 400.0 hold at 520.0 MD
600.0	6.00	40.00	599.2	14.4	12.1	18.8	0.00	0.00	
700.0	6.00	40.00	698.6	22.4	18.8	29.3	0.00	0.00	
800.0	6.00	40.00	798.1	30.4	25.5	39.7	0.00	0.00	
900.0	6.00	40.00	897.6	38.4	32.3	50.2	0.00	0.00	
920.0	6.00	40.00	917.4	40.0	33.6	52.3	0.00	0.00	Start DLS 3.00 TFO 0.77
1,000.0	8.40	40.22	996.8	47.7	40.1	62.3	3.00	3.00	
1,100.0	11.40	40.37	1,095.3	60.8	51.2	79.5	3.00	3.00	
1,200.0	14.40	40.45	1,192.8	77.8	65.7	101.8	3.00	3.00	
1,271.3	16.54	40.50	1,261.5	92.3	78.0	120.8	3.00	3.00	Start 6568.6 hold at 1271.3 MD
1,300.0	16.54	40.50	1,289.0	98.5	83.3	129.0	0.00	0.00	
1,400.0	16.54	40.50	1,384.9	120.1	101.8	157.5	0.00	0.00	
1,500.0	16.54	40.50	1,480.7	141.8	120.3	185.9	0.00	0.00	
1,600.0	16.54	40.50	1,576.6	163.4	138.8	214.4	0.00	0.00	
1,700.0	16.54	40.50	1,672.5	185.1	157.2	242.9	0.00	0.00	
1,800.0	16.54	40.50	1,768.3	206.7	175.7	271.3	0.00	0.00	
1,900.0	16.54	40.50	1,864.2	228.4	194.2	299.8	0.00	0.00	
2,000.0	16.54	40.50	1,960.0	250.0	212.7	328.2	0.00	0.00	
2,100.0	16.54	40.50	2,055.9	271.7	231.2	356.7	0.00	0.00	
2,200.0	16.54	40.50	2,151.8	293.3	249.7	385.2	0.00	0.00	
2,300.0	16.54	40.50	2,247.6	315.0	268.1	413.6	0.00	0.00	
2,400.0	16.54	40.50	2,343.5	336.6	286.6	442.1	0.00	0.00	
2,500.0	16.54	40.50	2,439.4	358.2	305.1	470.6	0.00	0.00	
2,600.0	16.54	40.50	2,535.2	379.9	323.6	499.0	0.00	0.00	
2,700.0	16.54	40.50	2,631.1	401.5	342.1	527.5	0.00	0.00	
2,800.0	16.54	40.50	2,726.9	423.2	360.6	556.0	0.00	0.00	
2,900.0	16.54	40.50	2,822.8	444.8	379.1	584.4	0.00	0.00	
3,000.0	16.54	40.50	2,918.7	466.5	397.5	612.9	0.00	0.00	
3,100.0	16.54	40.50	3,014.5	488.1	416.0	641.4	0.00	0.00	
3,200.0	16.54	40.50	3,110.4	509.8	434.5	669.8	0.00	0.00	
3,300.0	16.54	40.50	3,206.3	531.4	453.0	698.3	0.00	0.00	
3,400.0	16.54	40.50	3,302.1	553.1	471.5	726.8	0.00	0.00	
3,500.0	16.54	40.50	3,398.0	574.7	490.0	755.2	0.00	0.00	
3,600.0	16.54	40.50	3,493.9	596.4	508.4	783.7	0.00	0.00	
3,700.0	16.54	40.50	3,589.7	618.0	526.9	812.1	0.00	0.00	
3,800.0	16.54	40.50	3,685.6	639.6	545.4	840.6	0.00	0.00	
3,900.0	16.54	40.50	3,781.4	661.3	563.9	869.1	0.00	0.00	
4,000.0	16.54	40.50	3,877.3	682.9	582.4	897.5	0.00	0.00	
4,100.0	16.54	40.50	3,973.2	704.6	600.9	926.0	0.00	0.00	
4,200.0	16.54	40.50	4,069.0	726.2	619.4	954.5	0.00	0.00	
4,300.0	16.54	40.50	4,164.9	747.9	637.8	982.9	0.00	0.00	
4,400.0	16.54	40.50	4,260.8	769.5	656.3	1,011.4	0.00	0.00	
4,500.0	16.54	40.50	4,356.6	791.2	674.8	1,039.9	0.00	0.00	
4,600.0	16.54	40.50	4,452.5	812.8	693.3	1,068.3	0.00	0.00	
4,700.0	16.54	40.50	4,548.3	834.5	711.8	1,096.8	0.00	0.00	

Planning Report

Database:	USA EDM 5000 Multi Users DB	Local Co-ordinate Reference:	Well BATTLEMENT MESA 32D-26 795
Company:	Caerus Oil & Gas	TVD Reference:	30' KB @ 8994.0usft
Project:	Garfield County, CO (UTM 12N)	MD Reference:	30' KB @ 8994.0usft
Site:	S26-T7S-R95W (26K)	North Reference:	True
Well:	BATTLEMENT MESA 32D-26 795	Survey Calculation Method:	Minimum Curvature
Wellbore:	OH		
Design:	PLAN #1		

Planned Survey									
Measured Depth (usft)	Inclination (°)	Azimuth (°)	Vertical Depth (usft)	+N/-S (usft)	+E/-W (usft)	Vertical Section (usft)	Dogleg Rate (°/100usft)	Build Rate (°/100u)	Comments / Formations
4,800.0	16.54	40.50	4,644.2	856.1	730.3	1,125.3	0.00	0.00	
4,900.0	16.54	40.50	4,740.1	877.8	748.8	1,153.7	0.00	0.00	
5,000.0	16.54	40.50	4,835.9	899.4	767.2	1,182.2	0.00	0.00	
5,100.0	16.54	40.50	4,931.8	921.1	785.7	1,210.7	0.00	0.00	
5,200.0	16.54	40.50	5,027.7	942.7	804.2	1,239.1	0.00	0.00	
5,300.0	16.54	40.50	5,123.5	964.3	822.7	1,267.6	0.00	0.00	
5,400.0	16.54	40.50	5,219.4	986.0	841.2	1,296.1	0.00	0.00	
5,500.0	16.54	40.50	5,315.3	1,007.6	859.7	1,324.5	0.00	0.00	
5,600.0	16.54	40.50	5,411.1	1,029.3	878.1	1,353.0	0.00	0.00	
5,700.0	16.54	40.50	5,507.0	1,050.9	896.6	1,381.4	0.00	0.00	
5,800.0	16.54	40.50	5,602.8	1,072.6	915.1	1,409.9	0.00	0.00	
5,900.0	16.54	40.50	5,698.7	1,094.2	933.6	1,438.4	0.00	0.00	
6,000.0	16.54	40.50	5,794.6	1,115.9	952.1	1,466.8	0.00	0.00	
6,100.0	16.54	40.50	5,890.4	1,137.5	970.6	1,495.3	0.00	0.00	
6,200.0	16.54	40.50	5,986.3	1,159.2	989.1	1,523.8	0.00	0.00	
6,300.0	16.54	40.50	6,082.2	1,180.8	1,007.5	1,552.2	0.00	0.00	
6,400.0	16.54	40.50	6,178.0	1,202.5	1,026.0	1,580.7	0.00	0.00	
6,500.0	16.54	40.50	6,273.9	1,224.1	1,044.5	1,609.2	0.00	0.00	
6,600.0	16.54	40.50	6,369.7	1,245.7	1,063.0	1,637.6	0.00	0.00	
6,700.0	16.54	40.50	6,465.6	1,267.4	1,081.5	1,666.1	0.00	0.00	
6,800.0	16.54	40.50	6,561.5	1,289.0	1,100.0	1,694.6	0.00	0.00	
6,900.0	16.54	40.50	6,657.3	1,310.7	1,118.4	1,723.0	0.00	0.00	
7,000.0	16.54	40.50	6,753.2	1,332.3	1,136.9	1,751.5	0.00	0.00	
7,100.0	16.54	40.50	6,849.1	1,354.0	1,155.4	1,780.0	0.00	0.00	
7,200.0	16.54	40.50	6,944.9	1,375.6	1,173.9	1,808.4	0.00	0.00	
7,265.8	16.54	40.50	7,008.0	1,389.9	1,186.1	1,827.1	0.00	0.00	OHIO_CREEK.MBL (SSTVD)
7,300.0	16.54	40.50	7,040.8	1,397.3	1,192.4	1,836.9	0.00	0.00	
7,400.0	16.54	40.50	7,136.7	1,418.9	1,210.9	1,865.3	0.00	0.00	
7,500.0	16.54	40.50	7,232.5	1,440.6	1,229.4	1,893.8	0.00	0.00	
7,600.0	16.54	40.50	7,328.4	1,462.2	1,247.8	1,922.3	0.00	0.00	
7,675.8	16.54	40.50	7,401.0	1,478.6	1,261.8	1,943.8	0.00	0.00	WILLIAMS_FORK.MBL (SSTVD)
7,700.0	16.54	40.50	7,424.2	1,483.9	1,266.3	1,950.7	0.00	0.00	
7,800.0	16.54	40.50	7,520.1	1,505.5	1,284.8	1,979.2	0.00	0.00	
7,839.9	16.54	40.50	7,558.4	1,514.1	1,292.2	1,990.6	0.00	0.00	Start Drop -3.00
7,900.0	14.74	40.50	7,616.2	1,526.5	1,302.7	2,006.8	3.00	-3.00	
8,000.0	11.74	40.50	7,713.6	1,543.9	1,317.6	2,029.7	3.00	-3.00	
8,100.0	8.74	40.50	7,812.0	1,557.4	1,329.1	2,047.4	3.00	-3.00	
8,200.0	5.74	40.50	7,911.2	1,567.0	1,337.3	2,060.0	3.00	-3.00	
8,300.0	2.74	40.50	8,010.9	1,572.6	1,342.1	2,067.4	3.00	-3.00	
8,391.2	0.00	0.00	8,102.0	1,574.2	1,343.5	2,069.6	3.00	-3.00	Start 1992.0 hold at 8391.2 MD
8,400.0	0.00	0.00	8,110.8	1,574.2	1,343.5	2,069.6	0.00	0.00	
8,491.2	0.00	0.00	8,202.0	1,574.2	1,343.5	2,069.6	0.00	0.00	TOP_GAS.MBL (SSTVD)
8,500.0	0.00	0.00	8,210.8	1,574.2	1,343.5	2,069.6	0.00	0.00	
8,600.0	0.00	0.00	8,310.8	1,574.2	1,343.5	2,069.6	0.00	0.00	
8,700.0	0.00	0.00	8,410.8	1,574.2	1,343.5	2,069.6	0.00	0.00	
8,800.0	0.00	0.00	8,510.8	1,574.2	1,343.5	2,069.6	0.00	0.00	
8,900.0	0.00	0.00	8,610.8	1,574.2	1,343.5	2,069.6	0.00	0.00	
9,000.0	0.00	0.00	8,710.8	1,574.2	1,343.5	2,069.6	0.00	0.00	
9,100.0	0.00	0.00	8,810.8	1,574.2	1,343.5	2,069.6	0.00	0.00	
9,200.0	0.00	0.00	8,910.8	1,574.2	1,343.5	2,069.6	0.00	0.00	
9,300.0	0.00	0.00	9,010.8	1,574.2	1,343.5	2,069.6	0.00	0.00	
9,400.0	0.00	0.00	9,110.8	1,574.2	1,343.5	2,069.6	0.00	0.00	

Planning Report

Database:	USA EDM 5000 Multi Users DB	Local Co-ordinate Reference:	Well BATTLEMENT MESA 32D-26 795
Company:	Caerus Oil & Gas	TVD Reference:	30' KB @ 8994.0usft
Project:	Garfield County, CO (UTM 12N)	MD Reference:	30' KB @ 8994.0usft
Site:	S26-T7S-R95W (26K)	North Reference:	True
Well:	BATTLEMENT MESA 32D-26 795	Survey Calculation Method:	Minimum Curvature
Wellbore:	OH		
Design:	PLAN #1		

Planned Survey									
Measured Depth (usft)	Inclination (°)	Azimuth (°)	Vertical Depth (usft)	+N/-S (usft)	+E/-W (usft)	Vertical Section (usft)	Dogleg Rate (°/100usft)	Build Rate (°/100u)	Comments / Formations
9,500.0	0.00	0.00	9,210.8	1,574.2	1,343.5	2,069.6	0.00	0.00	
9,600.0	0.00	0.00	9,310.8	1,574.2	1,343.5	2,069.6	0.00	0.00	
9,700.0	0.00	0.00	9,410.8	1,574.2	1,343.5	2,069.6	0.00	0.00	
9,708.2	0.00	0.00	9,419.0	1,574.2	1,343.5	2,069.6	0.00	0.00	CAMEO.MBL (SSTVD)
9,800.0	0.00	0.00	9,510.8	1,574.2	1,343.5	2,069.6	0.00	0.00	
9,900.0	0.00	0.00	9,610.8	1,574.2	1,343.5	2,069.6	0.00	0.00	
10,000.0	0.00	0.00	9,710.8	1,574.2	1,343.5	2,069.6	0.00	0.00	
10,100.0	0.00	0.00	9,810.8	1,574.2	1,343.5	2,069.6	0.00	0.00	
10,200.0	0.00	0.00	9,910.8	1,574.2	1,343.5	2,069.6	0.00	0.00	
10,233.2	0.00	0.00	9,944.0	1,574.2	1,343.5	2,069.6	0.00	0.00	ROLLINS.MBL (SSTVD)
10,300.0	0.00	0.00	10,010.8	1,574.2	1,343.5	2,069.6	0.00	0.00	
10,383.2	0.00	0.00	10,094.0	1,574.2	1,343.5	2,069.6	0.00	0.00	TD at 10383.2 - BM 32D-26 795 PBHL

Targets									
Target Name	Dip Angle (°)	Dip Dir. (°)	TVD (usft)	+N/-S (usft)	+E/-W (usft)	Northing (usft)	Easting (usft)	Latitude	Longitude
BM 32D-26 795 PBHL - hit/miss target - Shape - plan hits target center - Circle (radius 50.0)	0.00	0.00	10,094.0	1,574.2	1,343.5	14,325,275.00	2,498,625.30	39.408919	-107.961920

Formations					
Measured Depth (usft)	Vertical Depth (usft)	Name	Lithology	Dip (°)	Dip Direction (°)
7,265.8	7,008.0	OHIO_CREEK.MBL (SSTVD)		0.00	
7,675.8	7,401.0	WILLIAMS_FORK.MBL (SSTVD)		0.00	
8,491.2	8,202.0	TOP_GAS.MBL (SSTVD)		0.00	
9,708.2	9,419.0	CAMEO.MBL (SSTVD)		0.00	
10,233.2	9,944.0	ROLLINS.MBL (SSTVD)		0.00	

Plan Annotations				
Measured Depth (usft)	Vertical Depth (usft)	+N/-S (usft)	+E/-W (usft)	Comment
320.0	320.0	0.0	0.0	Start Build 3.00
520.0	519.6	8.0	6.7	Start 400.0 hold at 520.0 MD
920.0	917.4	40.0	33.6	Start DLS 3.00 TFO 0.77
1,271.3	1,261.5	92.3	78.0	Start 6568.6 hold at 1271.3 MD
7,839.9	7,558.4	1,514.1	1,292.2	Start Drop -3.00
8,391.2	8,102.0	1,574.2	1,343.5	Start 1992.0 hold at 8391.2 MD
10,383.2	10,094.0	1,574.2	1,343.5	TD at 10383.2