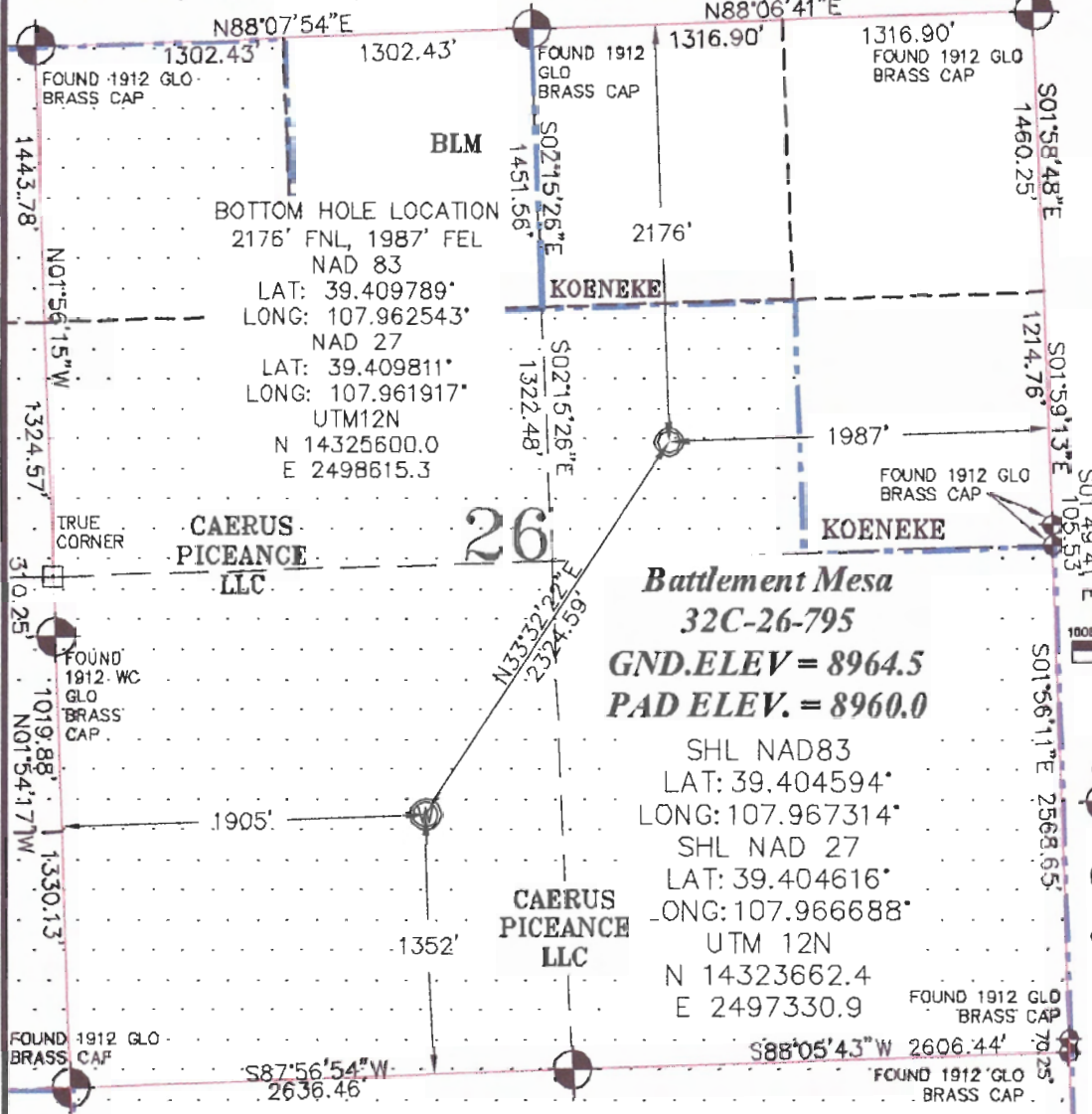


SEC. 26, T. 7 S., R. 95 W. OF THE 6TH P.M.

PLAT 1  
BM 26N-795  
PAD  
LOCATION



BOTTOM HOLE LOCATION  
2176' FNL, 1987' FEL  
NAD 83  
LAT: 39.409789°  
LONG: 107.962543°  
NAD 27  
LAT: 39.409811°  
LONG: 107.961917°  
UTM12N  
N 14325600.0  
E 2498615.3

**Battlement Mesa**  
**32C-26-795**  
**GND.ELEV = 8964.5**  
**PAD ELEV. = 8960.0**

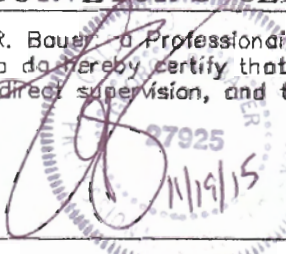
SHL NAD83  
LAT: 39.404594°  
LONG: 107.967314°  
SHL NAD 27  
LAT: 39.404616°  
LONG: 107.966688°  
UTM 12N  
N 14323662.4  
E 2497330.9

- LEGEND-**
- FIELD SURVEYED SECTION CORNER LOCATIONS
  - FIELD SURVEYED WELL LOCATION
  - CALCULATED BOTTOM HOLE LOCATION

**THIS WELL LOCATION PLAT WAS PREPARED FOR CAERUS PICEANCE LLC TO LOCATE THE BATTLEMENT MESA #32C-26-795 WELL, 1352 FEET FROM THE SOUTH LINE AND 1905 FEET FROM THE WEST LINE IN THE SW1/4 OF SECTION 26, T. 7 S., R. 95 W. OF THE 6TH P.M. GARFIELD COUNTY, COLORADO.**

**SURVEYOR'S CERTIFICATE**

I, George R. Bauer, a Professional Land Surveyor in the State of Colorado do hereby certify that this Survey was made under my direct supervision, and that this Plat represents said Survey.



**REFERENCE NOTES**

- 1) T. 7 S., R. 95 W., 6TH P.M. GLO PLAT.
- 2) U.S.G.S. QUAD: PARACHUTE, CO
- 3) ELEVATIONS BASED ON N.A.V.D. 1988 LIDAR BASED CONTROL PT CP MON B
- 4) LATITUDES AND LONGITUDES ARE BASED ON NAD 83, COLORADO CENTRAL ZONE.
- 5) GPS OPERATOR ROBERT WOOD, OBSERVED A PDOP OF 1.8.
- 6) ALL GPS OBSERVATIONS ARE IN COMPLIANCE WITH COGCC RULE NO. 215.
- 7) SURFACE AND BOTTOM HOLE LOCATIONS ARE MEASURED 90' FROM SECTION LINES.



<b>WELL LOCATION PLAT</b>	
CONSTRUCTION SURVEYS, INC. 0012 SUNRISE BLVD. SILT, CO 81652 (970) 876-5753	
SURVEY BY: REW 10/13/15	PDOP: 1.8
DRAWN BY: REW 11/18/15	DWG: CAERUS\BM26N-795
REVISED:	