



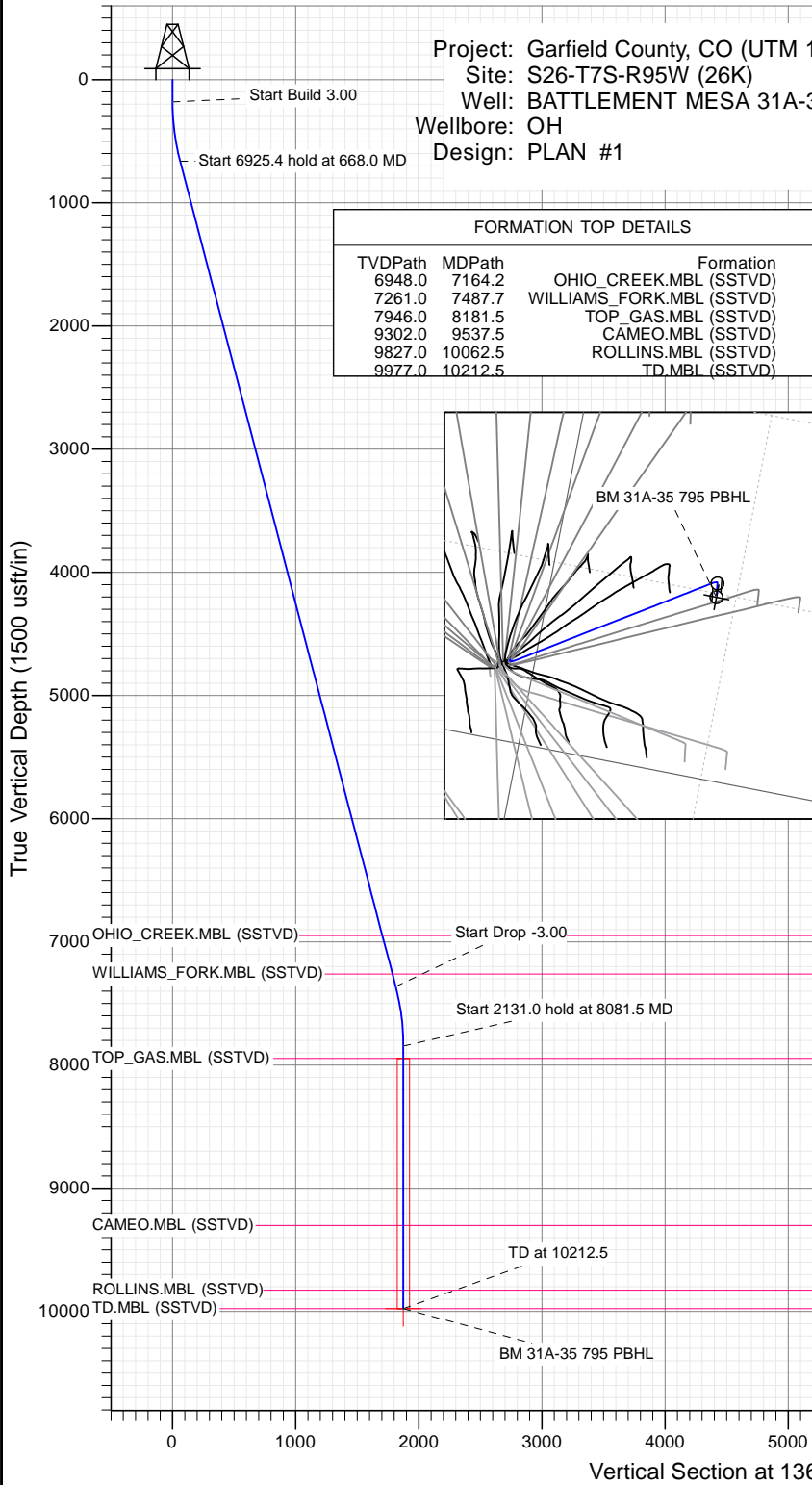
SECTION DETAILS

Sec	MD	Inc	Azi	TVD	+N-S	+E-W	Dleg	TFace	V Sect	Target
1	0.0	0.00	0.00	0.0	0.0	0.0	0.00	0.00	0.0	
2	180.0	0.00	0.00	180.0	0.0	0.0	0.00	0.00	0.0	
3	668.0	14.64	136.76	662.7	-45.2	42.5	3.00	136.76	62.0	
4	7593.4	14.64	136.76	7363.3	-1320.5	1241.5	0.00	0.00	1812.5	
5	8081.5	0.00	0.00	7846.0	-1365.6	1284.0	3.00	180.00	1874.5	
6	10212.5	0.00	0.00	9977.0	-1365.6	1284.0	0.00	0.00	1874.5	BM 31A-35 795 PBHL

Project: Garfield County, CO (UTM 12)
 Site: S26-T7S-R95W (26K)
 Well: BATTLEMENT MESA 31A-35
 Wellbore: OH
 Design: PLAN #1

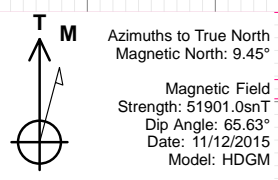
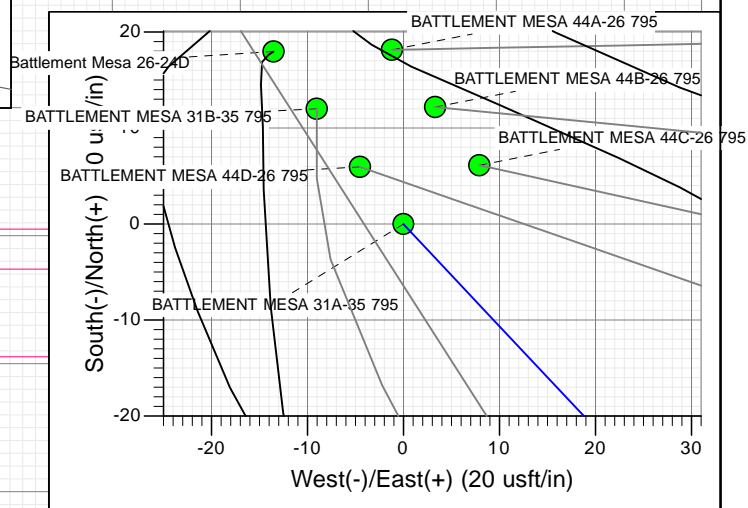
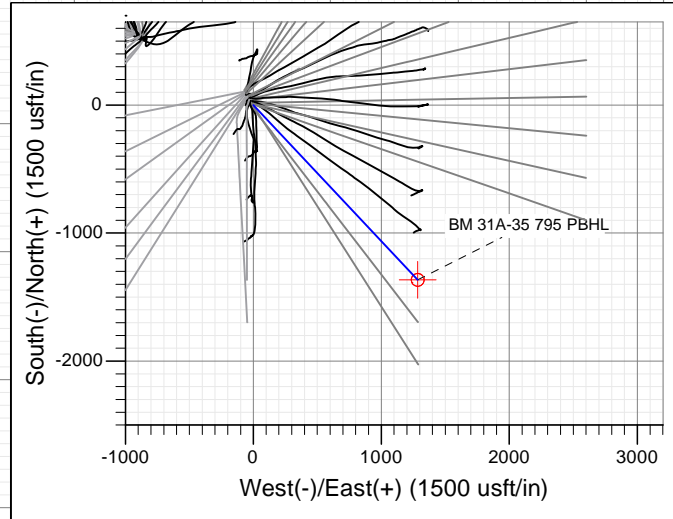
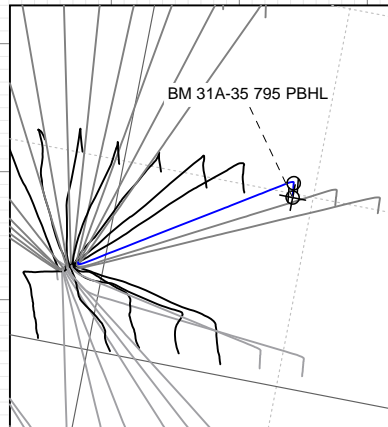
PLAN #1
 BATTLEMENT MESA 31A-35 795
 15XXX; LR
 30 KB @ 8994.0ust
 Ground Level @ 8964.0
 NAD 1927 - Western US
 Well BATTLEMENT MESA 31A-35 795, True North

Type	Target	Azimuth	Origin	N/S	E/W	From
TD	No Target (Freehand)	136.76	Slot	0.0	0.0	TVD
Name		TVD	+N-S	+E/W	Latitude	Longitude
BM 31A-35 795 PBHL		9977.0	-1365.6	1284.0	39.400584	-107.961925



FORMATION TOP DETAILS

TVDPath	MDPath	Formation
6948.0	7164.2	OHIO_CREEK.MBL (SSTVD)
7261.0	7487.7	WILLIAMS_FORK.MBL (SSTVD)
7946.0	8181.5	TOP_GAS.MBL (SSTVD)
9302.0	9537.5	CAMEO.MBL (SSTVD)
9827.0	10062.5	ROLLINS.MBL (SSTVD)
9977.0	10212.5	TD.MBL (SSTVD)



CASING DETAILS

No casing data is available



WELL DETAILS: BATTLEMENT MESA 31A-35 795

Ground Level: 8964.0

+N-S	+E-W	Northing	Easting	Latitude	Longitude
0.0	0.0	14323561.30	2497396.90	39.404332	-107.966467

Planning Report

Database:	USA EDM 5000 Multi Users DB	Local Co-ordinate Reference:	Well BATTLEMENT MESA 31A-35 795
Company:	Caerus Oil & Gas	TVD Reference:	30' KB @ 8994.0usft
Project:	Garfield County, CO (UTM 12N)	MD Reference:	30' KB @ 8994.0usft
Site:	S26-T7S-R95W (26K)	North Reference:	True
Well:	BATTLEMENT MESA 31A-35 795	Survey Calculation Method:	Minimum Curvature
Wellbore:	OH		
Design:	PLAN #1		

Project	Garfield County, CO (UTM 12N)		
Map System:	Universal Transverse Mercator (US Survey Feet)	System Datum:	Mean Sea Level
Geo Datum:	NAD 1927 - Western US		
Map Zone:	Zone 12N (114 W to 108 W)		

Site	S26-T7S-R95W (26K)		
Site Position:		Northing:	14,324,088.50 usft
From:	Map	Easting:	2,496,462.30 usft
Position Uncertainty:	0.0 usft	Slot Radius:	13-3/16"
		Latitude:	39.405864
		Longitude:	-107.969708
		Grid Convergence:	1.92 °

Well	BATTLEMENT MESA 31A-35 795		
Well Position	+N/-S	0.0 usft	Northing:
	+E/-W	0.0 usft	Easting:
Position Uncertainty		0.0 usft	Wellhead Elevation:
			0.0 usft
			Latitude:
			39.404332
			Longitude:
			-107.966467
			Ground Level:
			8,964.0 usft

Wellbore	OH		
Magnetics	Model Name	Sample Date	Declination
			(°)
			Dip Angle
			(°)
			Field Strength
			(nT)
	HDGM	11/12/2015	9.45
			65.63
			51,901

Design	PLAN #1		
Audit Notes:			
Version:	Phase:	PLAN	Tie On Depth:
			0.0
Vertical Section:	Depth From (TVD)	+N/-S	+E/-W
	(usft)	(usft)	(usft)
			Direction
			(°)
	0.0	0.0	136.76

Plan Sections										
Measured Depth (usft)	Inclination (°)	Azimuth (°)	Vertical Depth (usft)	+N/-S (usft)	+E/-W (usft)	Dogleg Rate (°/100usft)	Build Rate (°/100usft)	Turn Rate (°/100usft)	TFO (°)	Target
0.0	0.00	0.00	0.0	0.0	0.0	0.00	0.00	0.00	0.00	
180.0	0.00	0.00	180.0	0.0	0.0	0.00	0.00	0.00	0.00	
668.0	14.64	136.76	662.7	-45.2	42.5	3.00	3.00	0.00	136.76	
7,593.4	14.64	136.76	7,363.3	-1,320.5	1,241.5	0.00	0.00	0.00	0.00	
8,081.5	0.00	0.00	7,846.0	-1,365.6	1,284.0	3.00	-3.00	0.00	180.00	
10,212.5	0.00	0.00	9,977.0	-1,365.6	1,284.0	0.00	0.00	0.00	0.00	BM 31A-35 795 PBHL

Planning Report

Database:	USA EDM 5000 Multi Users DB	Local Co-ordinate Reference:	Well BATTLEMENT MESA 31A-35 795
Company:	Caerus Oil & Gas	TVD Reference:	30' KB @ 8994.0usft
Project:	Garfield County, CO (UTM 12N)	MD Reference:	30' KB @ 8994.0usft
Site:	S26-T7S-R95W (26K)	North Reference:	True
Well:	BATTLEMENT MESA 31A-35 795	Survey Calculation Method:	Minimum Curvature
Wellbore:	OH		
Design:	PLAN #1		

Planned Survey									
Measured Depth (usft)	Inclination (°)	Azimuth (°)	Vertical Depth (usft)	+N/-S (usft)	+E/-W (usft)	Vertical Section (usft)	Dogleg Rate (°/100usft)	Build Rate (°/100u)	Comments / Formations
0.0	0.00	0.00	0.0	0.0	0.0	0.0	0.00	0.00	
100.0	0.00	0.00	100.0	0.0	0.0	0.0	0.00	0.00	
180.0	0.00	0.00	180.0	0.0	0.0	0.0	0.00	0.00	Start Build 3.00
200.0	0.60	136.76	200.0	-0.1	0.1	0.1	3.00	3.00	
300.0	3.60	136.76	299.9	-2.7	2.6	3.8	3.00	3.00	
400.0	6.60	136.76	399.5	-9.2	8.7	12.7	3.00	3.00	
500.0	9.60	136.76	498.5	-19.5	18.3	26.7	3.00	3.00	
600.0	12.60	136.76	596.6	-33.5	31.5	46.0	3.00	3.00	
668.0	14.64	136.76	662.7	-45.2	42.5	62.0	3.00	3.00	Start 6925.4 hold at 668.0 MD
700.0	14.64	136.76	693.7	-51.1	48.0	70.1	0.00	0.00	
800.0	14.64	136.76	790.4	-69.5	65.3	95.4	0.00	0.00	
900.0	14.64	136.76	887.2	-87.9	82.6	120.6	0.00	0.00	
1,000.0	14.64	136.76	983.9	-106.3	100.0	145.9	0.00	0.00	
1,100.0	14.64	136.76	1,080.7	-124.7	117.3	171.2	0.00	0.00	
1,200.0	14.64	136.76	1,177.4	-143.1	134.6	196.5	0.00	0.00	
1,300.0	14.64	136.76	1,274.2	-161.6	151.9	221.8	0.00	0.00	
1,400.0	14.64	136.76	1,370.9	-180.0	169.2	247.0	0.00	0.00	
1,500.0	14.64	136.76	1,467.7	-198.4	186.5	272.3	0.00	0.00	
1,600.0	14.64	136.76	1,564.4	-216.8	203.8	297.6	0.00	0.00	
1,700.0	14.64	136.76	1,661.2	-235.2	221.2	322.9	0.00	0.00	
1,800.0	14.64	136.76	1,758.0	-253.6	238.5	348.1	0.00	0.00	
1,900.0	14.64	136.76	1,854.7	-272.0	255.8	373.4	0.00	0.00	
2,000.0	14.64	136.76	1,951.5	-290.5	273.1	398.7	0.00	0.00	
2,100.0	14.64	136.76	2,048.2	-308.9	290.4	424.0	0.00	0.00	
2,200.0	14.64	136.76	2,145.0	-327.3	307.7	449.2	0.00	0.00	
2,300.0	14.64	136.76	2,241.7	-345.7	325.0	474.5	0.00	0.00	
2,400.0	14.64	136.76	2,338.5	-364.1	342.3	499.8	0.00	0.00	
2,500.0	14.64	136.76	2,435.2	-382.5	359.7	525.1	0.00	0.00	
2,600.0	14.64	136.76	2,532.0	-400.9	377.0	550.3	0.00	0.00	
2,700.0	14.64	136.76	2,628.7	-419.4	394.3	575.6	0.00	0.00	
2,800.0	14.64	136.76	2,725.5	-437.8	411.6	600.9	0.00	0.00	
2,900.0	14.64	136.76	2,822.2	-456.2	428.9	626.2	0.00	0.00	
3,000.0	14.64	136.76	2,919.0	-474.6	446.2	651.4	0.00	0.00	
3,100.0	14.64	136.76	3,015.7	-493.0	463.5	676.7	0.00	0.00	
3,200.0	14.64	136.76	3,112.5	-511.4	480.9	702.0	0.00	0.00	
3,300.0	14.64	136.76	3,209.2	-529.8	498.2	727.3	0.00	0.00	
3,400.0	14.64	136.76	3,306.0	-548.3	515.5	752.5	0.00	0.00	
3,500.0	14.64	136.76	3,402.8	-566.7	532.8	777.8	0.00	0.00	
3,600.0	14.64	136.76	3,499.5	-585.1	550.1	803.1	0.00	0.00	
3,700.0	14.64	136.76	3,596.3	-603.5	567.4	828.4	0.00	0.00	
3,800.0	14.64	136.76	3,693.0	-621.9	584.7	853.6	0.00	0.00	
3,900.0	14.64	136.76	3,789.8	-640.3	602.1	878.9	0.00	0.00	
4,000.0	14.64	136.76	3,886.5	-658.7	619.4	904.2	0.00	0.00	
4,100.0	14.64	136.76	3,983.3	-677.2	636.7	929.5	0.00	0.00	
4,200.0	14.64	136.76	4,080.0	-695.6	654.0	954.7	0.00	0.00	
4,300.0	14.64	136.76	4,176.8	-714.0	671.3	980.0	0.00	0.00	
4,400.0	14.64	136.76	4,273.5	-732.4	688.6	1,005.3	0.00	0.00	
4,500.0	14.64	136.76	4,370.3	-750.8	705.9	1,030.6	0.00	0.00	
4,600.0	14.64	136.76	4,467.0	-769.2	723.3	1,055.9	0.00	0.00	
4,700.0	14.64	136.76	4,563.8	-787.7	740.6	1,081.1	0.00	0.00	
4,800.0	14.64	136.76	4,660.5	-806.1	757.9	1,106.4	0.00	0.00	
4,900.0	14.64	136.76	4,757.3	-824.5	775.2	1,131.7	0.00	0.00	

Planning Report

Database:	USA EDM 5000 Multi Users DB	Local Co-ordinate Reference:	Well BATTLEMENT MESA 31A-35 795
Company:	Caerus Oil & Gas	TVD Reference:	30' KB @ 8994.0usft
Project:	Garfield County, CO (UTM 12N)	MD Reference:	30' KB @ 8994.0usft
Site:	S26-T7S-R95W (26K)	North Reference:	True
Well:	BATTLEMENT MESA 31A-35 795	Survey Calculation Method:	Minimum Curvature
Wellbore:	OH		
Design:	PLAN #1		

Planned Survey									
Measured Depth (usft)	Inclination (°)	Azimuth (°)	Vertical Depth (usft)	+N/-S (usft)	+E/-W (usft)	Vertical Section (usft)	Dogleg Rate (°/100usft)	Build Rate (°/100u)	Comments / Formations
5,000.0	14.64	136.76	4,854.0	-842.9	792.5	1,157.0	0.00	0.00	
5,100.0	14.64	136.76	4,950.8	-861.3	809.8	1,182.2	0.00	0.00	
5,200.0	14.64	136.76	5,047.6	-879.7	827.1	1,207.5	0.00	0.00	
5,300.0	14.64	136.76	5,144.3	-898.1	844.4	1,232.8	0.00	0.00	
5,400.0	14.64	136.76	5,241.1	-916.6	861.8	1,258.1	0.00	0.00	
5,500.0	14.64	136.76	5,337.8	-935.0	879.1	1,283.3	0.00	0.00	
5,600.0	14.64	136.76	5,434.6	-953.4	896.4	1,308.6	0.00	0.00	
5,700.0	14.64	136.76	5,531.3	-971.8	913.7	1,333.9	0.00	0.00	
5,800.0	14.64	136.76	5,628.1	-990.2	931.0	1,359.2	0.00	0.00	
5,900.0	14.64	136.76	5,724.8	-1,008.6	948.3	1,384.4	0.00	0.00	
6,000.0	14.64	136.76	5,821.6	-1,027.0	965.6	1,409.7	0.00	0.00	
6,100.0	14.64	136.76	5,918.3	-1,045.5	983.0	1,435.0	0.00	0.00	
6,200.0	14.64	136.76	6,015.1	-1,063.9	1,000.3	1,460.3	0.00	0.00	
6,300.0	14.64	136.76	6,111.8	-1,082.3	1,017.6	1,485.5	0.00	0.00	
6,400.0	14.64	136.76	6,208.6	-1,100.7	1,034.9	1,510.8	0.00	0.00	
6,500.0	14.64	136.76	6,305.3	-1,119.1	1,052.2	1,536.1	0.00	0.00	
6,600.0	14.64	136.76	6,402.1	-1,137.5	1,069.5	1,561.4	0.00	0.00	
6,700.0	14.64	136.76	6,498.8	-1,155.9	1,086.8	1,586.6	0.00	0.00	
6,800.0	14.64	136.76	6,595.6	-1,174.4	1,104.2	1,611.9	0.00	0.00	
6,900.0	14.64	136.76	6,692.4	-1,192.8	1,121.5	1,637.2	0.00	0.00	
7,000.0	14.64	136.76	6,789.1	-1,211.2	1,138.8	1,662.5	0.00	0.00	
7,100.0	14.64	136.76	6,885.9	-1,229.6	1,156.1	1,687.7	0.00	0.00	
7,164.2	14.64	136.76	6,948.0	-1,241.4	1,167.2	1,704.0	0.00	0.00	OHIO_CREEK.MBL (SSTVD)
7,200.0	14.64	136.76	6,982.6	-1,248.0	1,173.4	1,713.0	0.00	0.00	
7,300.0	14.64	136.76	7,079.4	-1,266.4	1,190.7	1,738.3	0.00	0.00	
7,400.0	14.64	136.76	7,176.1	-1,284.8	1,208.0	1,763.6	0.00	0.00	
7,487.7	14.64	136.76	7,261.0	-1,301.0	1,223.2	1,785.7	0.00	0.00	WILLIAMS_FORK.MBL (SSTVD)
7,500.0	14.64	136.76	7,272.9	-1,303.3	1,225.4	1,788.8	0.00	0.00	
7,593.4	14.64	136.76	7,363.3	-1,320.5	1,241.5	1,812.5	0.00	0.00	Start Drop -3.00
7,600.0	14.44	136.76	7,369.6	-1,321.7	1,242.7	1,814.1	3.00	-3.00	
7,700.0	11.44	136.76	7,467.1	-1,338.0	1,258.0	1,836.5	3.00	-3.00	
7,800.0	8.44	136.76	7,565.6	-1,350.6	1,269.8	1,853.8	3.00	-3.00	
7,900.0	5.44	136.76	7,664.8	-1,359.4	1,278.1	1,865.9	3.00	-3.00	
8,000.0	2.44	136.76	7,764.6	-1,364.4	1,282.8	1,872.7	3.00	-3.00	
8,081.5	0.00	0.00	7,846.0	-1,365.6	1,284.0	1,874.5	3.00	-3.00	Start 2131.0 hold at 8081.5 MD
8,100.0	0.00	0.00	7,864.5	-1,365.6	1,284.0	1,874.5	0.00	0.00	
8,181.5	0.00	0.00	7,946.0	-1,365.6	1,284.0	1,874.5	0.00	0.00	TOP_GAS.MBL (SSTVD)
8,200.0	0.00	0.00	7,964.5	-1,365.6	1,284.0	1,874.5	0.00	0.00	
8,300.0	0.00	0.00	8,064.5	-1,365.6	1,284.0	1,874.5	0.00	0.00	
8,400.0	0.00	0.00	8,164.5	-1,365.6	1,284.0	1,874.5	0.00	0.00	
8,500.0	0.00	0.00	8,264.5	-1,365.6	1,284.0	1,874.5	0.00	0.00	
8,600.0	0.00	0.00	8,364.5	-1,365.6	1,284.0	1,874.5	0.00	0.00	
8,700.0	0.00	0.00	8,464.5	-1,365.6	1,284.0	1,874.5	0.00	0.00	
8,800.0	0.00	0.00	8,564.5	-1,365.6	1,284.0	1,874.5	0.00	0.00	
8,900.0	0.00	0.00	8,664.5	-1,365.6	1,284.0	1,874.5	0.00	0.00	
9,000.0	0.00	0.00	8,764.5	-1,365.6	1,284.0	1,874.5	0.00	0.00	
9,100.0	0.00	0.00	8,864.5	-1,365.6	1,284.0	1,874.5	0.00	0.00	
9,200.0	0.00	0.00	8,964.5	-1,365.6	1,284.0	1,874.5	0.00	0.00	
9,300.0	0.00	0.00	9,064.5	-1,365.6	1,284.0	1,874.5	0.00	0.00	
9,400.0	0.00	0.00	9,164.5	-1,365.6	1,284.0	1,874.5	0.00	0.00	
9,500.0	0.00	0.00	9,264.5	-1,365.6	1,284.0	1,874.5	0.00	0.00	
9,537.5	0.00	0.00	9,302.0	-1,365.6	1,284.0	1,874.5	0.00	0.00	CAMEO.MBL (SSTVD)

Planning Report

Database:	USA EDM 5000 Multi Users DB	Local Co-ordinate Reference:	Well BATTLEMENT MESA 31A-35 795
Company:	Caerus Oil & Gas	TVD Reference:	30' KB @ 8994.0usft
Project:	Garfield County, CO (UTM 12N)	MD Reference:	30' KB @ 8994.0usft
Site:	S26-T7S-R95W (26K)	North Reference:	True
Well:	BATTLEMENT MESA 31A-35 795	Survey Calculation Method:	Minimum Curvature
Wellbore:	OH		
Design:	PLAN #1		

Planned Survey									
Measured Depth (usft)	Inclination (°)	Azimuth (°)	Vertical Depth (usft)	+N/-S (usft)	+E/-W (usft)	Vertical Section (usft)	Dogleg Rate (°/100usft)	Build Rate (°/100u)	Comments / Formations
9,600.0	0.00	0.00	9,364.5	-1,365.6	1,284.0	1,874.5	0.00	0.00	
9,700.0	0.00	0.00	9,464.5	-1,365.6	1,284.0	1,874.5	0.00	0.00	
9,800.0	0.00	0.00	9,564.5	-1,365.6	1,284.0	1,874.5	0.00	0.00	
9,900.0	0.00	0.00	9,664.5	-1,365.6	1,284.0	1,874.5	0.00	0.00	
10,000.0	0.00	0.00	9,764.5	-1,365.6	1,284.0	1,874.5	0.00	0.00	
10,062.5	0.00	0.00	9,827.0	-1,365.6	1,284.0	1,874.5	0.00	0.00	ROLLINS.MBL (SSTVD)
10,100.0	0.00	0.00	9,864.5	-1,365.6	1,284.0	1,874.5	0.00	0.00	
10,200.0	0.00	0.00	9,964.5	-1,365.6	1,284.0	1,874.5	0.00	0.00	
10,212.5	0.00	0.00	9,977.0	-1,365.6	1,284.0	1,874.5	0.00	0.00	TD at 10212.5 - TD.MBL (SSTVD) - BM 31A-35

Targets											
Target Name	- hit/miss target	- Shape	Dip Angle (°)	Dip Dir. (°)	TVD (usft)	+N/-S (usft)	+E/-W (usft)	Northing (usft)	Easting (usft)	Latitude	Longitude
BM 31A-35 795 PBHL			0.00	0.00	9,977.0	-1,365.6	1,284.0	14,322,239.60	2,498,726.10	39.400584	-107.961925
- plan hits target center											
- Circle (radius 50.0)											

Formations						
Measured Depth (usft)	Vertical Depth (usft)	Name	Lithology	Dip (°)	Dip Direction (°)	
7,164.2	6,948.0	OHIO_CREEK.MBL (SSTVD)		0.00		
7,487.7	7,261.0	WILLIAMS_FORK.MBL (SSTVD)		0.00		
8,181.5	7,946.0	TOP_GAS.MBL (SSTVD)		0.00		
9,537.5	9,302.0	CAMEO.MBL (SSTVD)		0.00		
10,062.5	9,827.0	ROLLINS.MBL (SSTVD)		0.00		
10,212.5	9,977.0	TD.MBL (SSTVD)		0.00		

Plan Annotations					
Measured Depth (usft)	Vertical Depth (usft)	Local Coordinates		Comment	
		+N/-S (usft)	+E/-W (usft)		
180.0	180.0	0.0	0.0	Start Build 3.00	
668.0	662.7	-45.2	42.5	Start 6925.4 hold at 668.0 MD	
7,593.4	7,363.3	-1,320.5	1,241.5	Start Drop -3.00	
8,081.5	7,846.0	-1,365.6	1,284.0	Start 2131.0 hold at 8081.5 MD	
10,212.5	9,977.0	-1,365.6	1,284.0	TD at 10212.5	