

**-LEGEND-**

- FIELD SURVEYED SECTION CORNER LOCATIONS
- FIELD SURVEYED WELL LOCATION
- CALCULATED BOTTOM HOLE LOCATION

**26**

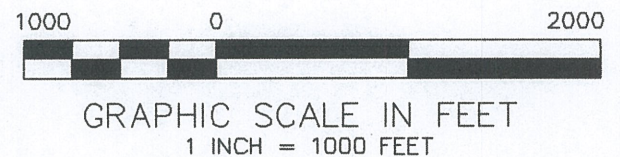
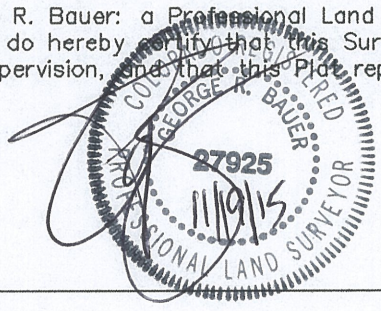
**Battlement Mesa**  
**21B-35-795**  
**GND.ELEV = 8962.4**  
**PAD ELEV. = 8960.0**  
SHL NAD83  
LAT: 39.404478°  
LONG: 107.967253°  
SHL NAD 27  
LAT: 39.404500°  
LONG: 107.966626°  
UTM 12N  
N 14323620.9  
E 2497349.7

**BOTTOM HOLE LOCATION**  
449' FNL, 1921' FWL  
NAD 83  
LAT: 39.399653°  
LONG: 107.967261°  
NAD 27  
LAT: 39.399674°  
LONG: 107.966635°  
UTM12N  
N 14321863.3  
E 2497406.5

**THIS WELL LOCATION PLAT WAS PREPARED FOR CAERUS PICEANCE LLC TO LOCATE THE BATTLEMENT MESA #21B-35-795 WELL, 1310 FEET FROM THE SOUTH LINE AND 1922 FEET FROM THE WEST LINE IN THE SW1/4 OF SECTION 26, T. 7 S., R. 95 W. OF THE 6TH P.M. GARFIELD COUNTY, COLORADO.**

**SURVEYOR'S CERTIFICATE**

I, George R. Bauer, a Professional Land Surveyor in the State of Colorado do hereby certify that this Survey was made under my direct supervision, and that this Plat represents said Survey.



**REFERENCE NOTES**

- 1) T. 7 S., R. 95 W., 6TH P.M. GLO PLAT.
- 2) U.S.G.S. QUAD: PARACHUTE, CO
- 3) ELEVATIONS BASED ON N.A.V.D. 1988 LIDAR BASED CONTROL PT CP MON B
- 4) LATITUDES AND LONGITUDES ARE BASED ON NAD 83, COLORADO CENTRAL ZONE.
- 5) GPS OPERATOR ROBERT WOOD, OBSERVED A PDOP OF 1.8.
- 6) ALL GPS OBSERVATIONS ARE IN COMPLIANCE WITH COGCC RULE NO. 215.
- 7) SURFACE AND BOTTOM HDLE LOCATIONS ARE MEASURED 90° FROM SECTION LINES.



**Battlement Mesa 26-N-795**  
E1/26W, SECTION 26, T. 7 S., R. 95 W.

<b>WELL LOCATION PLAT</b>	
CONSTRUCTION SURVEYS, INC. 2012 SUNRISE BLVD. SILT, CO 81652 (970)876-5753	
SURVEY BY: REW 10/13/15	PDOP: 1.8
DRAWN BY: REW 11/18/15	DWG: CAERUS\BM26N-795
REVISED:	