

-LEGEND-

- FIELD SURVEYED SECTION CORNER LOCATIONS
- FIELD SURVEYED WELL LOCATION
- CALCULATED BOTTOM HOLE LOCATION

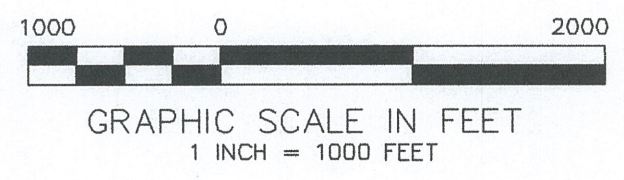
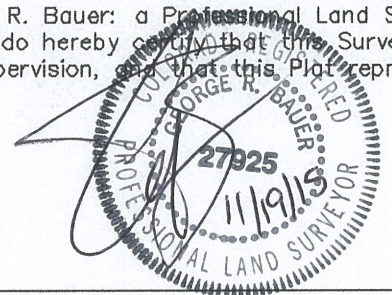
Battlement Mesa
21A-35-795
GND.ELEV = 8962.3
PAD ELEV. = 8960.0
SHL NAD83
LAT: 39.404426°
LONG: 107.967205°
SHL NAD 27
LAT: 39.404448°
LONG: 107.966579°
UTM 12N
N 14323602.5
E 2497363.8

BOTTOM HOLE LOCATION
118' FNL, 1918' FWL
NAD 83
LAT: 39.400559°
LONG: 107.967269°
NAD 27
LAT: 39.400580°
LONG: 107.966642°
UTM12N
N 14322193.3
E 2497393.3

THIS WELL LOCATION PLAT WAS PREPARED FOR CAERUS PICEANCE LLC TO LOCATE THE BATTLEMENT MESA #21A-35-795 WELL, 1291 FEET FROM THE SOUTH LINE AND 1935 FEET FROM THE WEST LINE IN THE SW1/4 OF SECTION 26, T. 7 S., R. 95 W. OF THE 6TH P.M. GARFIELD COUNTY, COLORADO.

SURVEYOR'S CERTIFICATE

I, George R. Bauer, a Professional Land Surveyor in the State of Colorado do hereby certify that this Survey was made under my direct supervision, and that this Plat represents said Survey.



- REFERENCE NOTES**
- 1) T. 7 S., R. 95 W., 6TH P.M. GLO PLAT.
 - 2) U.S.G.S. QUAD: PARACHUTE, CO
 - 3) ELEVATIONS BASED ON N.A.V.D. 1988 LIDAR BASED CONTROL PT CP MON B
 - 4) LATITUDES AND LONGITUDES ARE BASED ON NAD 83, COLORADO CENTRAL ZONE.
 - 5) GPS OPERATOR ROBERT WOOD, OBSERVED A PDOP OF 1.8.
 - 6) ALL GPS OBSERVATIONS ARE IN COMPLIANCE WITH COGCC RULE NO. 215.
 - 7) SURFACE AND BOTTOM HOLE LOCATIONS ARE MEASURED 90° FROM SECTION LINES.



Battlement Mesa 26-N-795
E1/2SW, SECTION 26, T. 7 S., R. 95 W.

WELL LOCATION PLAT	
CONSTRUCTION SURVEYS, INC. 2012 SUNRISE BLVD. SILT, CO 81652 (970)876-5153	
SURVEY BY: REW 10/13/15	PDOP: 1.8
DRAWN BY: REW 11/18/15	DWG: CAERUS\BM26N-795
REVISED:	