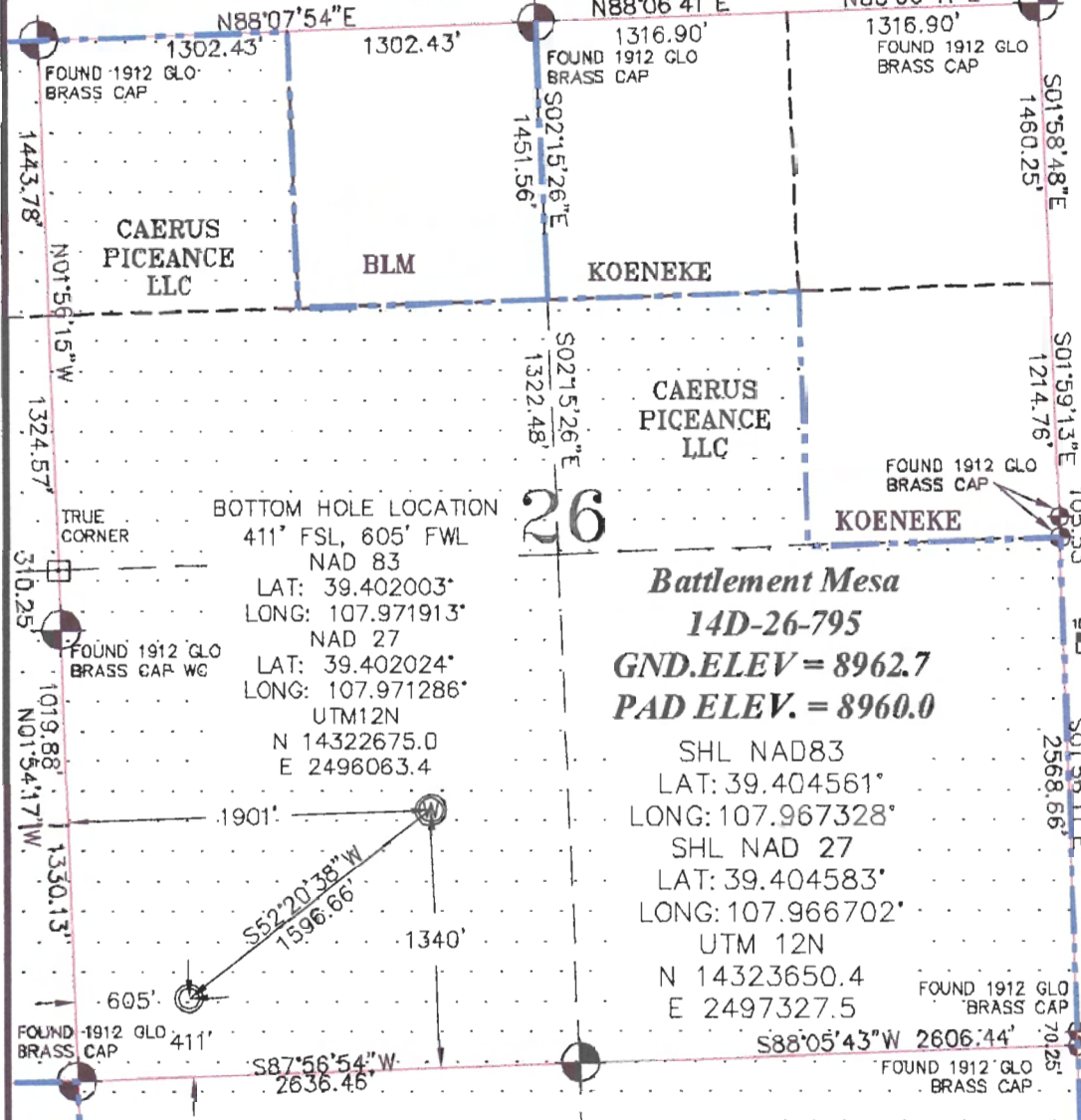


SEC. 26, T. 7 S., R. 95 W. OF THE 6TH P.M.

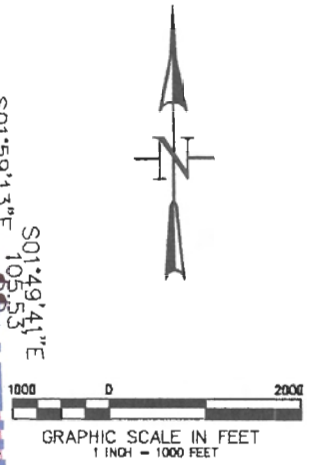
PLAT 1  
BM 26N-795  
PAD  
LOCATION



**BOTTOM HOLE LOCATION**  
411' FSL, 605' FWL  
NAD 83  
LAT: 39.402003°  
LONG: 107.971913°  
NAD 27  
LAT: 39.402024°  
LONG: 107.971286°  
UTM12N  
N 14322675.0  
E 2496063.4

**Battlement Mesa**  
**14D-26-795**  
**GND.ELEV = 8962.7**  
**PAD ELEV. = 8960.0**

SHL NAD83  
LAT: 39.404561°  
LONG: 107.967328°  
SHL NAD 27  
LAT: 39.404583°  
LONG: 107.966702°  
UTM 12N  
N 14323650.4  
E 2497327.5

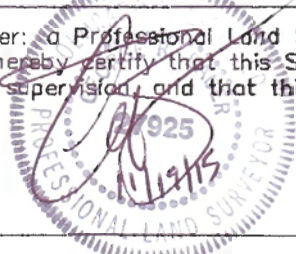


- LEGEND-**
- FIELD SURVEYED SECTION CORNER LOCATIONS
  - FIELD SURVEYED WELL LOCATION
  - CALCULATED BOTTOM HOLE LOCATION

**THIS WELL LOCATION PLAT WAS PREPARED FOR CAERUS PICEANCE LLC TO LOCATE THE BATTLEMENT MESA #14D-26-795 WELL, 1340 FEET FROM THE SOUTH LINE AND 1901 FEET FROM THE WEST LINE IN THE SW1/4 OF SECTION 26, T. 7 S., R. 95 W. OF THE 6TH P.M. GARFIELD COUNTY, COLORADO.**

**SURVEYOR'S CERTIFICATE**

I, George R. Bauer, a Professional Land Surveyor in the State of Colorado do hereby certify that this Survey was made under my direct supervision and that this Plat represents said Survey.



**REFERENCE NOTES**

- 1) T. 7 S., R. 95 W., 6TH P.M. GLO PLAT.
- 2) U.S.G.S. QUAD: PARACHUTE, CO
- 3) ELEVATIONS BASED ON N.A.V.D. 1988 LIDAR BASED CONTROL PT CP MON 8
- 4) LATITUDES AND LONGITUDES ARE BASED ON NAD 83, COLORADO CENTRAL ZONE.
- 5) GPS OPERATOR ROBERT WOOD, OBSERVED A PPOF OF 1.8.
- 6) ALL GPS OBSERVATIONS ARE IN COMPLIANCE WITH COGCC RULE NO. 215.
- 7) SURFACE AND BOTTOM HOLE LOCATIONS ARE MEASURED 90° FROM SECTION LINES.

	<b>WELL LOCATION PLAT</b>	
	CONSTRUCTION SURVEYS, INC. 0012 SUNRISE BLVD. SILT, CO 81652 (970)876-5753	
	SURVEY BY:REW 10/13/15	PDOP: 1.8
DRAWN BY:REW 11/18/15	DWG: CAERUS\BM26N-795	
REVISED:		

