



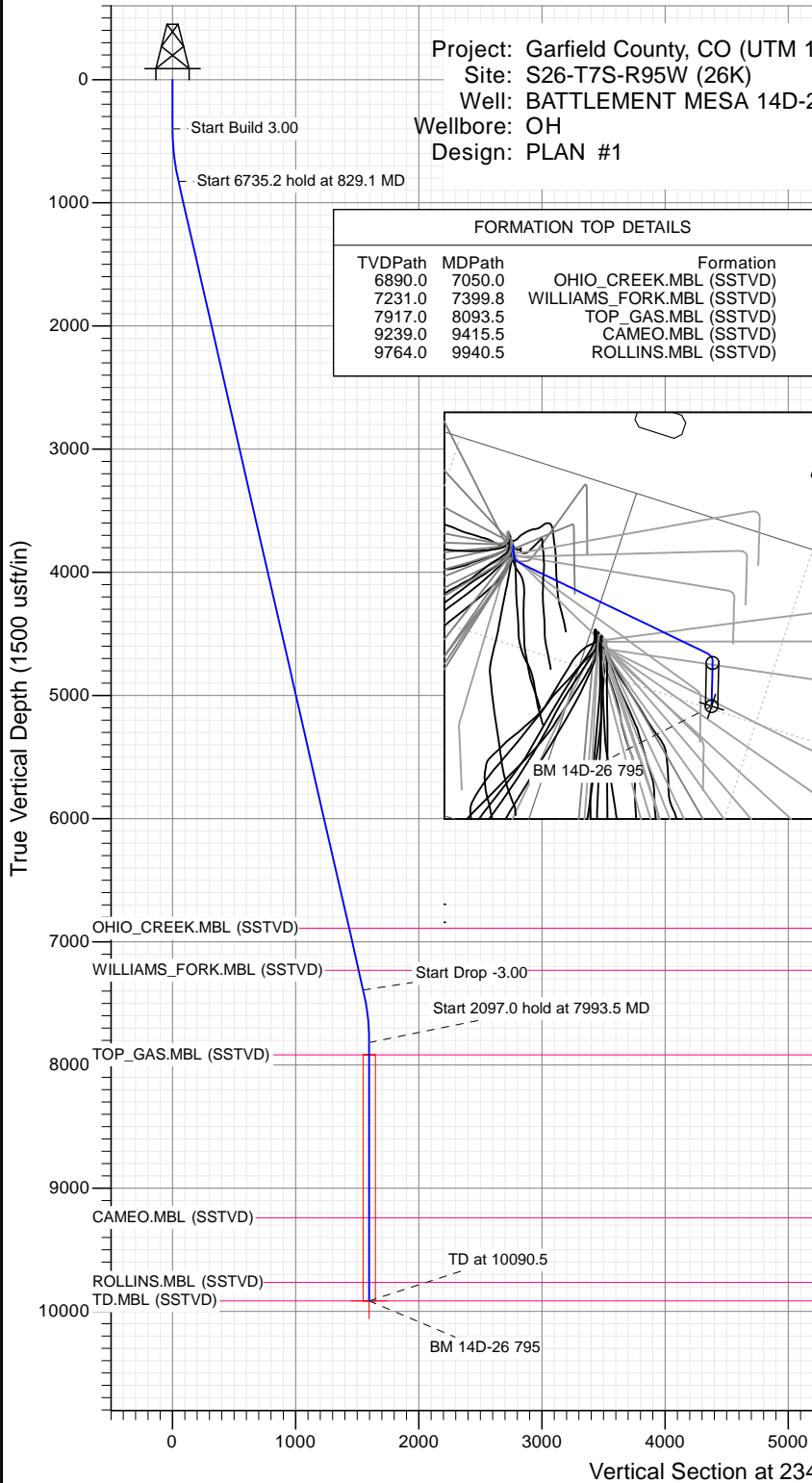
SECTION DETAILS

Sec	MD	Inc	Azi	TVD	+N/-S	+E/-W	Dleg	TFace	Vsect	Target
1	0.0	0.00	0.00	0.0	0.0	0.0	0.00	0.00	0.0	
2	400.0	0.00	0.00	400.0	0.0	0.0	0.00	0.00	0.0	
3	829.1	12.87	234.27	825.5	-28.0	-39.0	3.00	234.27	48.0	
4	7564.4	12.87	234.27	7391.5	-904.3	-1257.2	0.00	0.00	1548.7	
5	7993.5	0.00	0.00	7817.0	-932.3	-1296.2	3.00	180.00	1596.7	
6	10090.5	0.00	0.00	9914.0	-932.3	-1296.2	0.00	0.00	1596.7	BM 14D-26 795

Project: Garfield County, CO (UTM 12  
 Site: S26-T7S-R95W (26K)  
 Well: BATTLEMENT MESA 14D-26  
 Wellbore: OH  
 Design: PLAN #1

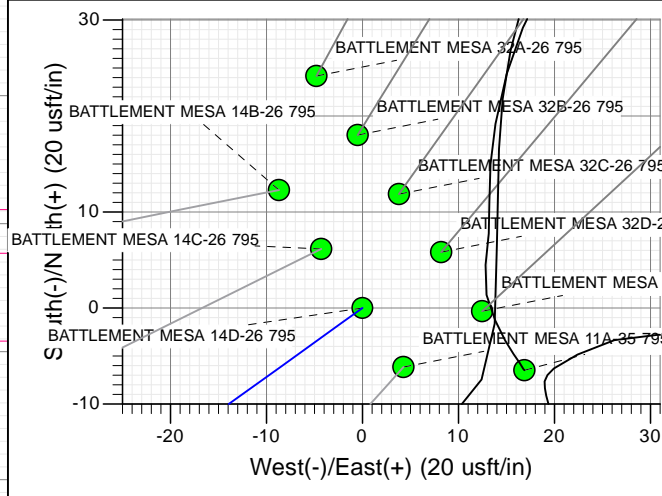
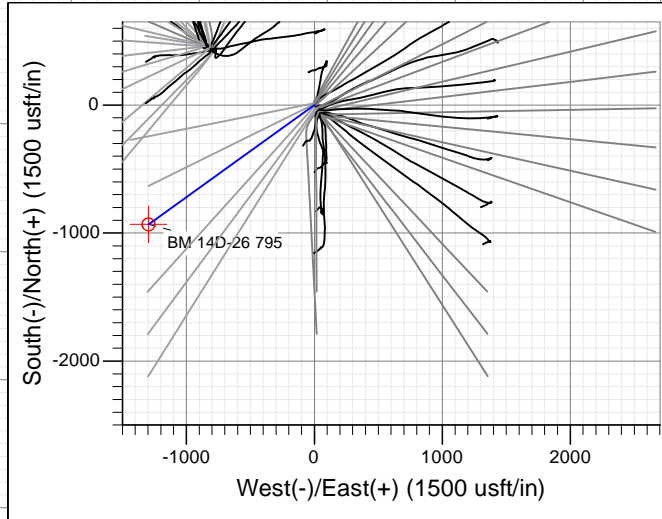
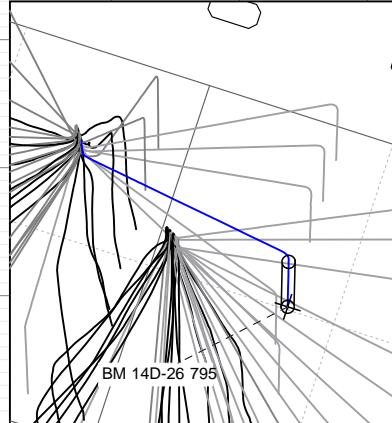
PLAN #1  
 BATTLEMENT MESA 14D-26 795  
 15XXX; LR  
 30 KB @ 8994.0usft  
 Ground Level @ 8964.0  
 NAD 1927 - Western US  
 Well BATTLEMENT MESA 14D-26 795, True North

Type	Target	Azimuth	Origin	N/S	E/W	From
TD	No Target (Freehand)	234.27	Type Slot	0.0	0.0	TVD
Name		TVD	+N/-S	+E/-W	Latitude	Longitude
BM 14D-26 795		9914.0	-932.3	-1296.2	39.402024	-107.971286



FORMATION TOP DETAILS

TVDPath	MDPath	Formation
6890.0	7050.0	OHIO_CREEK.MBL (SSTVD)
7231.0	7399.8	WILLIAMS_FORK.MBL (SSTVD)
7917.0	8093.5	TOP_GAS.MBL (SSTVD)
9239.0	9415.5	CAMEO.MBL (SSTVD)
9764.0	9940.5	ROLLINS.MBL (SSTVD)



TM  
 Azimuths to True North  
 Magnetic North: 9.45°  
 Magnetic Field  
 Strength: 51901.2snT  
 Dip Angle: 65.63°  
 Date: 11/12/2015  
 Model: HDGM

CASING DETAILS  
 No casing data is available



WELL DETAILS: BATTLEMENT MESA 14D-26 795

+N/-S	+E/-W	Northing	Ground Level:	8964.0
0.0	0.0	14323650.40	Easting	2497327.50
			Latitude	39.404583
			Longitude	-107.966701

## Planning Report

<b>Database:</b>	USA EDM 5000 Multi Users DB	<b>Local Co-ordinate Reference:</b>	Well BATTLEMENT MESA 14D-26 795
<b>Company:</b>	Caerus Oil & Gas	<b>TVD Reference:</b>	30' KB @ 8994.0usft
<b>Project:</b>	Garfield County, CO (UTM 12N)	<b>MD Reference:</b>	30' KB @ 8994.0usft
<b>Site:</b>	S26-T7S-R95W (26K)	<b>North Reference:</b>	True
<b>Well:</b>	BATTLEMENT MESA 14D-26 795	<b>Survey Calculation Method:</b>	Minimum Curvature
<b>Wellbore:</b>	OH		
<b>Design:</b>	PLAN #1		

<b>Project</b>	Garfield County, CO (UTM 12N)		
<b>Map System:</b>	Universal Transverse Mercator (US Survey Feet)	<b>System Datum:</b>	Mean Sea Level
<b>Geo Datum:</b>	NAD 1927 - Western US		
<b>Map Zone:</b>	Zone 12N (114 W to 108 W)		

<b>Site</b>	S26-T7S-R95W (26K)				
<b>Site Position:</b>		<b>Northing:</b>	14,324,088.50 usft	<b>Latitude:</b>	39.405864
<b>From:</b>	Map	<b>Easting:</b>	2,496,462.30 usft	<b>Longitude:</b>	-107.969708
<b>Position Uncertainty:</b>	0.0 usft	<b>Slot Radius:</b>	13-3/16"	<b>Grid Convergence:</b>	1.92 °

<b>Well</b>	BATTLEMENT MESA 14D-26 795					
<b>Well Position</b>	<b>+N/-S</b>	0.0 usft	<b>Northing:</b>	14,323,650.40 usft	<b>Latitude:</b>	39.404583
	<b>+E/-W</b>	0.0 usft	<b>Easting:</b>	2,497,327.50 usft	<b>Longitude:</b>	-107.966701
<b>Position Uncertainty</b>		0.0 usft	<b>Wellhead Elevation:</b>	0.0 usft	<b>Ground Level:</b>	8,964.0 usft

<b>Wellbore</b>	OH				
<b>Magnetics</b>	<b>Model Name</b>	<b>Sample Date</b>	<b>Declination</b>	<b>Dip Angle</b>	<b>Field Strength</b>
			(°)	(°)	(nT)
	HDGM	11/12/2015	9.45	65.63	51,901

<b>Design</b>	PLAN #1			
<b>Audit Notes:</b>				
<b>Version:</b>	<b>Phase:</b>	PLAN	<b>Tie On Depth:</b>	0.0
<b>Vertical Section:</b>	<b>Depth From (TVD)</b>	<b>+N/-S</b>	<b>+E/-W</b>	<b>Direction</b>
	(usft)	(usft)	(usft)	(°)
	0.0	0.0	0.0	234.27

Plan Sections										
Measured Depth (usft)	Inclination (°)	Azimuth (°)	Vertical Depth (usft)	+N/-S (usft)	+E/-W (usft)	Dogleg Rate (°/100usft)	Build Rate (°/100usft)	Turn Rate (°/100usft)	TFO (°)	Target
0.0	0.00	0.00	0.0	0.0	0.0	0.00	0.00	0.00	0.00	
400.0	0.00	0.00	400.0	0.0	0.0	0.00	0.00	0.00	0.00	
829.1	12.87	234.27	825.5	-28.0	-39.0	3.00	3.00	0.00	234.27	
7,564.4	12.87	234.27	7,391.5	-904.3	-1,257.2	0.00	0.00	0.00	0.00	
7,993.5	0.00	0.00	7,817.0	-932.3	-1,296.2	3.00	-3.00	0.00	180.00	
10,090.5	0.00	0.00	9,914.0	-932.3	-1,296.2	0.00	0.00	0.00	0.00	BM 14D-26 795

## Planning Report

<b>Database:</b>	USA EDM 5000 Multi Users DB	<b>Local Co-ordinate Reference:</b>	Well BATTLEMENT MESA 14D-26 795
<b>Company:</b>	Caerus Oil & Gas	<b>TVD Reference:</b>	30' KB @ 8994.0usft
<b>Project:</b>	Garfield County, CO (UTM 12N)	<b>MD Reference:</b>	30' KB @ 8994.0usft
<b>Site:</b>	S26-T7S-R95W (26K)	<b>North Reference:</b>	True
<b>Well:</b>	BATTLEMENT MESA 14D-26 795	<b>Survey Calculation Method:</b>	Minimum Curvature
<b>Wellbore:</b>	OH		
<b>Design:</b>	PLAN #1		

Planned Survey									
Measured Depth (usft)	Inclination (°)	Azimuth (°)	Vertical Depth (usft)	+N/-S (usft)	+E/-W (usft)	Vertical Section (usft)	Dogleg Rate (°/100usft)	Build Rate (°/100u)	Comments / Formations
0.0	0.00	0.00	0.0	0.0	0.0	0.0	0.00	0.00	
100.0	0.00	0.00	100.0	0.0	0.0	0.0	0.00	0.00	
200.0	0.00	0.00	200.0	0.0	0.0	0.0	0.00	0.00	
300.0	0.00	0.00	300.0	0.0	0.0	0.0	0.00	0.00	
400.0	0.00	0.00	400.0	0.0	0.0	0.0	0.00	0.00	Start Build 3.00
500.0	3.00	234.27	500.0	-1.5	-2.1	2.6	3.00	3.00	
600.0	6.00	234.27	599.6	-6.1	-8.5	10.5	3.00	3.00	
700.0	9.00	234.27	698.8	-13.7	-19.1	23.5	3.00	3.00	
800.0	12.00	234.27	797.1	-24.4	-33.9	41.7	3.00	3.00	
829.1	12.87	234.27	825.5	-28.0	-39.0	48.0	3.00	3.00	Start 6735.2 hold at 829.1 MD
900.0	12.87	234.27	894.6	-37.3	-51.8	63.8	0.00	0.00	
1,000.0	12.87	234.27	992.1	-50.3	-69.9	86.1	0.00	0.00	
1,100.0	12.87	234.27	1,089.6	-63.3	-88.0	108.4	0.00	0.00	
1,200.0	12.87	234.27	1,187.1	-76.3	-106.1	130.6	0.00	0.00	
1,300.0	12.87	234.27	1,284.6	-89.3	-124.1	152.9	0.00	0.00	
1,400.0	12.87	234.27	1,382.0	-102.3	-142.2	175.2	0.00	0.00	
1,500.0	12.87	234.27	1,479.5	-115.3	-160.3	197.5	0.00	0.00	
1,600.0	12.87	234.27	1,577.0	-128.3	-178.4	219.8	0.00	0.00	
1,700.0	12.87	234.27	1,674.5	-141.3	-196.5	242.0	0.00	0.00	
1,800.0	12.87	234.27	1,772.0	-154.3	-214.6	264.3	0.00	0.00	
1,900.0	12.87	234.27	1,869.5	-167.4	-232.7	286.6	0.00	0.00	
2,000.0	12.87	234.27	1,967.0	-180.4	-250.8	308.9	0.00	0.00	
2,100.0	12.87	234.27	2,064.5	-193.4	-268.8	331.2	0.00	0.00	
2,200.0	12.87	234.27	2,161.9	-206.4	-286.9	353.4	0.00	0.00	
2,300.0	12.87	234.27	2,259.4	-219.4	-305.0	375.7	0.00	0.00	
2,400.0	12.87	234.27	2,356.9	-232.4	-323.1	398.0	0.00	0.00	
2,500.0	12.87	234.27	2,454.4	-245.4	-341.2	420.3	0.00	0.00	
2,600.0	12.87	234.27	2,551.9	-258.4	-359.3	442.6	0.00	0.00	
2,700.0	12.87	234.27	2,649.4	-271.4	-377.4	464.8	0.00	0.00	
2,800.0	12.87	234.27	2,746.9	-284.5	-395.5	487.1	0.00	0.00	
2,900.0	12.87	234.27	2,844.3	-297.5	-413.5	509.4	0.00	0.00	
3,000.0	12.87	234.27	2,941.8	-310.5	-431.6	531.7	0.00	0.00	
3,100.0	12.87	234.27	3,039.3	-323.5	-449.7	554.0	0.00	0.00	
3,200.0	12.87	234.27	3,136.8	-336.5	-467.8	576.3	0.00	0.00	
3,300.0	12.87	234.27	3,234.3	-349.5	-485.9	598.5	0.00	0.00	
3,400.0	12.87	234.27	3,331.8	-362.5	-504.0	620.8	0.00	0.00	
3,500.0	12.87	234.27	3,429.3	-375.5	-522.1	643.1	0.00	0.00	
3,600.0	12.87	234.27	3,526.7	-388.5	-540.2	665.4	0.00	0.00	
3,700.0	12.87	234.27	3,624.2	-401.5	-558.2	687.7	0.00	0.00	
3,800.0	12.87	234.27	3,721.7	-414.6	-576.3	709.9	0.00	0.00	
3,900.0	12.87	234.27	3,819.2	-427.6	-594.4	732.2	0.00	0.00	
4,000.0	12.87	234.27	3,916.7	-440.6	-612.5	754.5	0.00	0.00	
4,100.0	12.87	234.27	4,014.2	-453.6	-630.6	776.8	0.00	0.00	
4,200.0	12.87	234.27	4,111.7	-466.6	-648.7	799.1	0.00	0.00	
4,300.0	12.87	234.27	4,209.2	-479.6	-666.8	821.3	0.00	0.00	
4,400.0	12.87	234.27	4,306.6	-492.6	-684.9	843.6	0.00	0.00	
4,500.0	12.87	234.27	4,404.1	-505.6	-702.9	865.9	0.00	0.00	
4,600.0	12.87	234.27	4,501.6	-518.6	-721.0	888.2	0.00	0.00	
4,700.0	12.87	234.27	4,599.1	-531.6	-739.1	910.5	0.00	0.00	
4,800.0	12.87	234.27	4,696.6	-544.7	-757.2	932.7	0.00	0.00	
4,900.0	12.87	234.27	4,794.1	-557.7	-775.3	955.0	0.00	0.00	
5,000.0	12.87	234.27	4,891.6	-570.7	-793.4	977.3	0.00	0.00	

## Planning Report

<b>Database:</b>	USA EDM 5000 Multi Users DB	<b>Local Co-ordinate Reference:</b>	Well BATTLEMENT MESA 14D-26 795
<b>Company:</b>	Caerus Oil & Gas	<b>TVD Reference:</b>	30' KB @ 8994.0usft
<b>Project:</b>	Garfield County, CO (UTM 12N)	<b>MD Reference:</b>	30' KB @ 8994.0usft
<b>Site:</b>	S26-T7S-R95W (26K)	<b>North Reference:</b>	True
<b>Well:</b>	BATTLEMENT MESA 14D-26 795	<b>Survey Calculation Method:</b>	Minimum Curvature
<b>Wellbore:</b>	OH		
<b>Design:</b>	PLAN #1		

Planned Survey									
Measured Depth (usft)	Inclination (°)	Azimuth (°)	Vertical Depth (usft)	+N/-S (usft)	+E/-W (usft)	Vertical Section (usft)	Dogleg Rate (°/100usft)	Build Rate (°/100u)	Comments / Formations
5,100.0	12.87	234.27	4,989.0	-583.7	-811.5	999.6	0.00	0.00	
5,200.0	12.87	234.27	5,086.5	-596.7	-829.6	1,021.9	0.00	0.00	
5,300.0	12.87	234.27	5,184.0	-609.7	-847.6	1,044.1	0.00	0.00	
5,400.0	12.87	234.27	5,281.5	-622.7	-865.7	1,066.4	0.00	0.00	
5,500.0	12.87	234.27	5,379.0	-635.7	-883.8	1,088.7	0.00	0.00	
5,600.0	12.87	234.27	5,476.5	-648.7	-901.9	1,111.0	0.00	0.00	
5,700.0	12.87	234.27	5,574.0	-661.8	-920.0	1,133.3	0.00	0.00	
5,800.0	12.87	234.27	5,671.4	-674.8	-938.1	1,155.5	0.00	0.00	
5,900.0	12.87	234.27	5,768.9	-687.8	-956.2	1,177.8	0.00	0.00	
6,000.0	12.87	234.27	5,866.4	-700.8	-974.3	1,200.1	0.00	0.00	
6,100.0	12.87	234.27	5,963.9	-713.8	-992.3	1,222.4	0.00	0.00	
6,200.0	12.87	234.27	6,061.4	-726.8	-1,010.4	1,244.7	0.00	0.00	
6,300.0	12.87	234.27	6,158.9	-739.8	-1,028.5	1,267.0	0.00	0.00	
6,400.0	12.87	234.27	6,256.4	-752.8	-1,046.6	1,289.2	0.00	0.00	
6,500.0	12.87	234.27	6,353.8	-765.8	-1,064.7	1,311.5	0.00	0.00	
6,600.0	12.87	234.27	6,451.3	-778.8	-1,082.8	1,333.8	0.00	0.00	
6,700.0	12.87	234.27	6,548.8	-791.9	-1,100.9	1,356.1	0.00	0.00	
6,800.0	12.87	234.27	6,646.3	-804.9	-1,118.9	1,378.4	0.00	0.00	
6,900.0	12.87	234.27	6,743.8	-817.9	-1,137.0	1,400.6	0.00	0.00	
7,000.0	12.87	234.27	6,841.3	-830.9	-1,155.1	1,422.9	0.00	0.00	
7,050.0	12.87	234.27	6,890.0	-837.4	-1,164.2	1,434.0	0.00	0.00	OHIO_CREEK.MBL (SSTVD)
7,100.0	12.87	234.27	6,938.8	-843.9	-1,173.2	1,445.2	0.00	0.00	
7,200.0	12.87	234.27	7,036.3	-856.9	-1,191.3	1,467.5	0.00	0.00	
7,300.0	12.87	234.27	7,133.7	-869.9	-1,209.4	1,489.8	0.00	0.00	
7,399.8	12.87	234.27	7,231.0	-882.9	-1,227.4	1,512.0	0.00	0.00	WILLIAMS_FORK.MBL (SSTVD)
7,400.0	12.87	234.27	7,231.2	-882.9	-1,227.5	1,512.0	0.00	0.00	
7,500.0	12.87	234.27	7,328.7	-895.9	-1,245.6	1,534.3	0.00	0.00	
7,564.4	12.87	234.27	7,391.5	-904.3	-1,257.2	1,548.7	0.00	0.00	Start Drop -3.00
7,600.0	11.81	234.27	7,426.3	-908.8	-1,263.4	1,556.3	3.00	-3.00	
7,700.0	8.81	234.27	7,524.6	-919.2	-1,277.9	1,574.2	3.00	-3.00	
7,800.0	5.81	234.27	7,623.8	-926.6	-1,288.2	1,586.9	3.00	-3.00	
7,900.0	2.81	234.27	7,723.5	-931.0	-1,294.3	1,594.4	3.00	-3.00	
7,993.5	0.00	0.00	7,817.0	-932.3	-1,296.2	1,596.7	3.00	-3.00	Start 2097.0 hold at 7993.5 MD
8,000.0	0.00	0.00	7,823.5	-932.3	-1,296.2	1,596.7	0.00	0.00	
8,093.5	0.00	0.00	7,917.0	-932.3	-1,296.2	1,596.7	0.00	0.00	TOP_GAS.MBL (SSTVD)
8,100.0	0.00	0.00	7,923.5	-932.3	-1,296.2	1,596.7	0.00	0.00	
8,200.0	0.00	0.00	8,023.5	-932.3	-1,296.2	1,596.7	0.00	0.00	
8,300.0	0.00	0.00	8,123.5	-932.3	-1,296.2	1,596.7	0.00	0.00	
8,400.0	0.00	0.00	8,223.5	-932.3	-1,296.2	1,596.7	0.00	0.00	
8,500.0	0.00	0.00	8,323.5	-932.3	-1,296.2	1,596.7	0.00	0.00	
8,600.0	0.00	0.00	8,423.5	-932.3	-1,296.2	1,596.7	0.00	0.00	
8,700.0	0.00	0.00	8,523.5	-932.3	-1,296.2	1,596.7	0.00	0.00	
8,800.0	0.00	0.00	8,623.5	-932.3	-1,296.2	1,596.7	0.00	0.00	
8,900.0	0.00	0.00	8,723.5	-932.3	-1,296.2	1,596.7	0.00	0.00	
9,000.0	0.00	0.00	8,823.5	-932.3	-1,296.2	1,596.7	0.00	0.00	
9,100.0	0.00	0.00	8,923.5	-932.3	-1,296.2	1,596.7	0.00	0.00	
9,200.0	0.00	0.00	9,023.5	-932.3	-1,296.2	1,596.7	0.00	0.00	
9,300.0	0.00	0.00	9,123.5	-932.3	-1,296.2	1,596.7	0.00	0.00	
9,400.0	0.00	0.00	9,223.5	-932.3	-1,296.2	1,596.7	0.00	0.00	
9,415.5	0.00	0.00	9,239.0	-932.3	-1,296.2	1,596.7	0.00	0.00	CAMEO.MBL (SSTVD)
9,500.0	0.00	0.00	9,323.5	-932.3	-1,296.2	1,596.7	0.00	0.00	
9,600.0	0.00	0.00	9,423.5	-932.3	-1,296.2	1,596.7	0.00	0.00	

## Planning Report

<b>Database:</b>	USA EDM 5000 Multi Users DB	<b>Local Co-ordinate Reference:</b>	Well BATTLEMENT MESA 14D-26 795
<b>Company:</b>	Caerus Oil & Gas	<b>TVD Reference:</b>	30' KB @ 8994.0usft
<b>Project:</b>	Garfield County, CO (UTM 12N)	<b>MD Reference:</b>	30' KB @ 8994.0usft
<b>Site:</b>	S26-T7S-R95W (26K)	<b>North Reference:</b>	True
<b>Well:</b>	BATTLEMENT MESA 14D-26 795	<b>Survey Calculation Method:</b>	Minimum Curvature
<b>Wellbore:</b>	OH		
<b>Design:</b>	PLAN #1		

Planned Survey									
Measured Depth (usft)	Inclination (°)	Azimuth (°)	Vertical Depth (usft)	+N/-S (usft)	+E/-W (usft)	Vertical Section (usft)	Dogleg Rate (°/100usft)	Build Rate (°/100u)	Comments / Formations
9,700.0	0.00	0.00	9,523.5	-932.3	-1,296.2	1,596.7	0.00	0.00	
9,800.0	0.00	0.00	9,623.5	-932.3	-1,296.2	1,596.7	0.00	0.00	
9,900.0	0.00	0.00	9,723.5	-932.3	-1,296.2	1,596.7	0.00	0.00	
9,940.5	0.00	0.00	9,764.0	-932.3	-1,296.2	1,596.7	0.00	0.00	ROLLINS.MBL (SSTVD)
10,000.0	0.00	0.00	9,823.5	-932.3	-1,296.2	1,596.7	0.00	0.00	
10,090.5	0.00	0.00	9,914.0	-932.3	-1,296.2	1,596.7	0.00	0.00	TD at 10090.5 - BM 14D-26 795

Targets									
Target Name	Dip Angle (°)	Dip Dir. (°)	TVD (usft)	+N/-S (usft)	+E/-W (usft)	Northing (usft)	Easting (usft)	Latitude	Longitude
BM 14D-26 795 - hit/miss target - Shape - plan hits target center - Circle (radius 0.0)	0.00	0.00	9,914.0	-932.3	-1,296.2	14,322,675.00	2,496,063.40	39.402024	-107.971286

Formations						
Measured Depth (usft)	Vertical Depth (usft)	Name	Lithology	Dip (°)	Dip Direction (°)	
7,050.0	6,890.0	OHIO_CREEK.MBL (SSTVD)		0.00		
7,399.8	7,231.0	WILLIAMS_FORK.MBL (SSTVD)		0.00		
8,093.5	7,917.0	TOP_GAS.MBL (SSTVD)		0.00		
9,415.5	9,239.0	CAMEO.MBL (SSTVD)		0.00		
9,940.5	9,764.0	ROLLINS.MBL (SSTVD)		0.00		

Plan Annotations				
Measured Depth (usft)	Vertical Depth (usft)	+N/-S (usft)	+E/-W (usft)	Comment
400.0	400.0	0.0	0.0	Start Build 3.00
829.1	825.5	-28.0	-39.0	Start 6735.2 hold at 829.1 MD
7,564.4	7,391.5	-904.3	-1,257.2	Start Drop -3.00
7,993.5	7,817.0	-932.3	-1,296.2	Start 2097.0 hold at 7993.5 MD
10,090.5	9,914.0	-932.3	-1,296.2	TD at 10090.5