



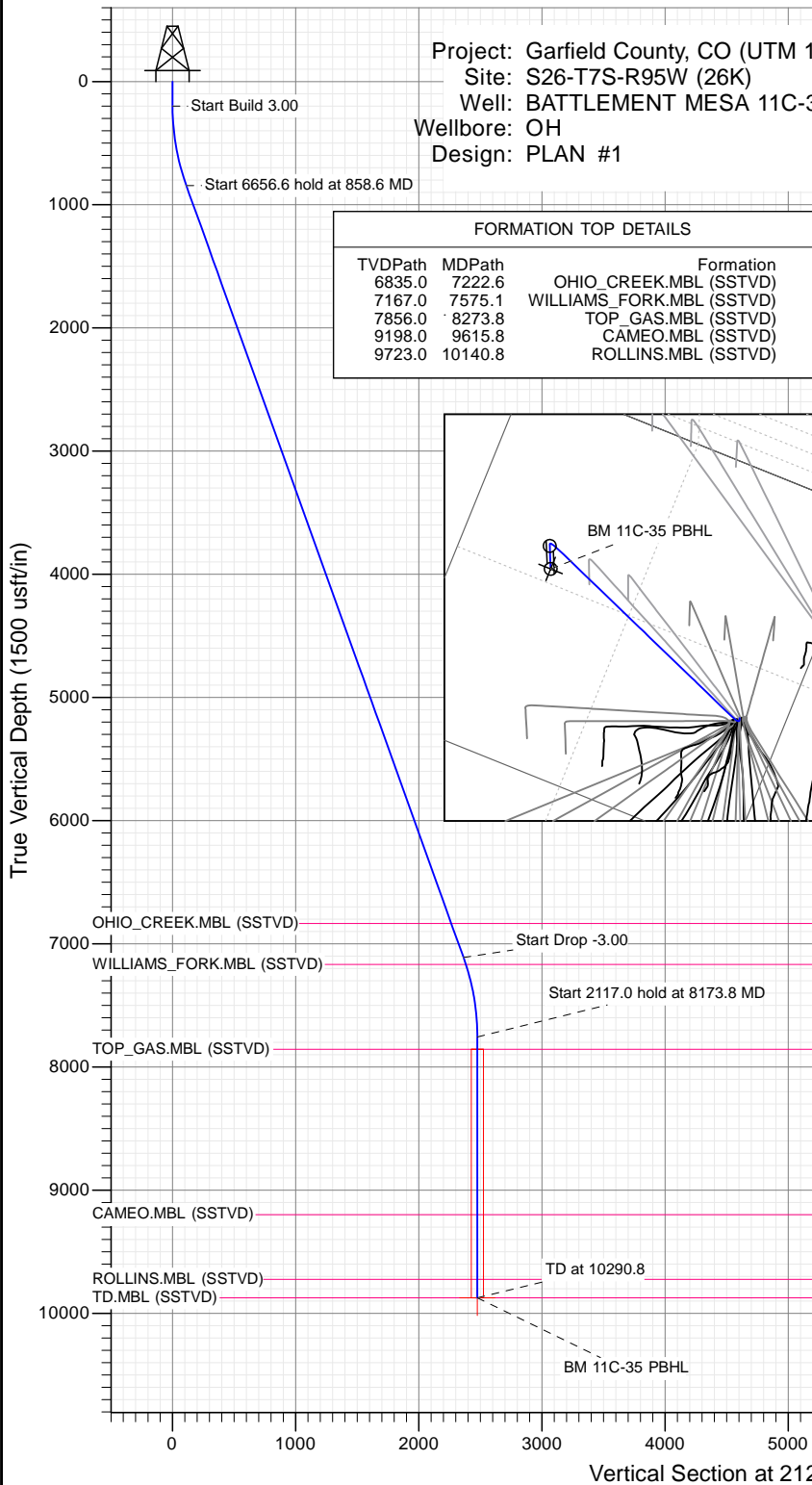
SECTION DETAILS

Sec	MD	Inc	Azi	TVD	+N/-S	+E/-W	Dleg	TFace	VSect	Target
1	0.0	0.00	0.00	0.0	0.0	0.0	0.00	0.00	0.0	
2	200.0	0.00	0.00	200.0	0.0	0.0	0.00	0.00	0.0	
3	858.6	19.76	212.12	845.6	-95.2	-59.8	3.00	212.12	112.4	
4	7515.2	19.76	212.12	7110.4	-2001.1	-1256.3	0.00	0.00	2362.7	
5	8173.8	0.00	0.00	7756.0	-2096.3	-1316.0	3.00	180.00	2475.2	
6	10290.8	0.00	0.00	9873.0	-2096.3	-1316.0	0.00	0.00	2475.2	BM 11C-35 PBHL

Project: Garfield County, CO (UTM 12  
 Site: S26-T7S-R95W (26K)  
 Well: BATTLEMENT MESA 11C-35  
 Wellbore: OH  
 Design: PLAN #1

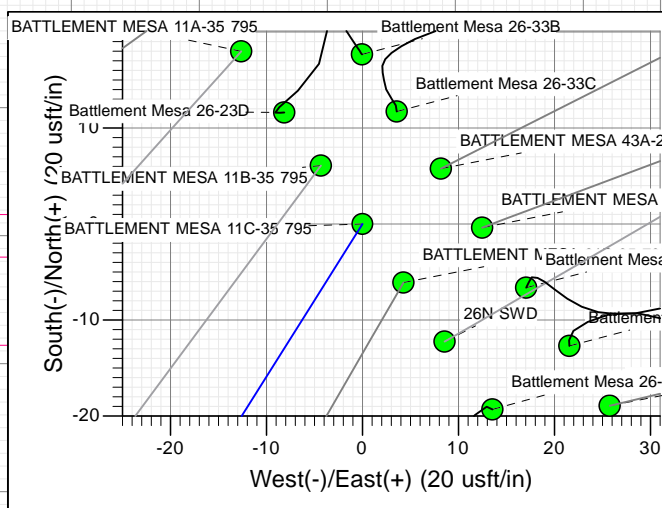
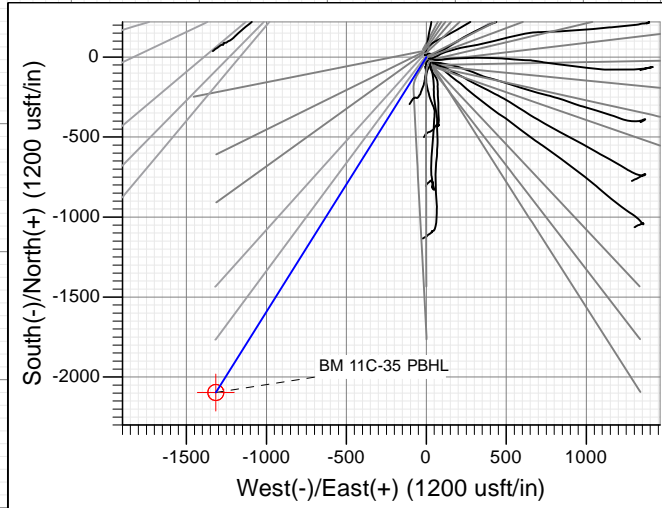
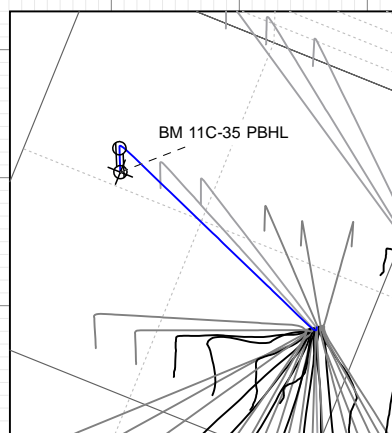
PLAN #1  
 BATTLEMENT MESA 11C-35 795  
 15XXX; LR  
 30 KB @ 8964.0usft  
 Ground Level @ 8964.0  
 NAD 1927 - Western US  
 Well BATTLEMENT MESA 11C-35 795, True North

Type	Target	Origin	N/S	E/W	From
TD	No Target (Freehand)	Slot	0.0	0.0	TVD
Name					
BM 11C-35 PBHL					
	TVD	+N/-S	+E/-W	Latitude	Longitude
	9873.0	-2096.3	-1316.0	39.398764	-107.971296



FORMATION TOP DETAILS

TVDPath	MDPath	Formation
6835.0	7222.6	OHIO_CREEK.MBL (SSTVD)
7167.0	7575.1	WILLIAMS_FORK.MBL (SSTVD)
7856.0	8273.8	TOP_GAS.MBL (SSTVD)
9198.0	9615.8	CAMEO.MBL (SSTVD)
9723.0	10140.8	ROLLINS.MBL (SSTVD)



**T M**  
 Azimuths to True North  
 Magnetic North: 9.45°  
 Magnetic Field  
 Strength: 51901.0snT  
 Dip Angle: 65.63°  
 Date: 11/12/2015  
 Model: HDGM

**CASING DETAILS**  
 No casing data is available



WELL DETAILS: BATTLEMENT MESA 11C-35 795

Ground Level:	8964.0
+N/-S	0.0
+E/-W	0.0
Northing	14323626.85
Easting	2497345.21
Latitude	39.404517
Longitude	-107.966642



## Planning Report

<b>Database:</b>	USA EDM 5000 Multi Users DB	<b>Local Co-ordinate Reference:</b>	Well BATTLEMENT MESA 11C-35 795
<b>Company:</b>	Caerus Oil & Gas	<b>TVD Reference:</b>	30' KB @ 8994.0usft
<b>Project:</b>	Garfield County, CO (UTM 12N)	<b>MD Reference:</b>	30' KB @ 8994.0usft
<b>Site:</b>	S26-T7S-R95W (26K)	<b>North Reference:</b>	True
<b>Well:</b>	BATTLEMENT MESA 11C-35 795	<b>Survey Calculation Method:</b>	Minimum Curvature
<b>Wellbore:</b>	OH		
<b>Design:</b>	PLAN #1		

<b>Project</b>	Garfield County, CO (UTM 12N)		
<b>Map System:</b>	Universal Transverse Mercator (US Survey Feet)	<b>System Datum:</b>	Mean Sea Level
<b>Geo Datum:</b>	NAD 1927 - Western US		
<b>Map Zone:</b>	Zone 12N (114 W to 108 W)		

<b>Site</b>	S26-T7S-R95W (26K)				
<b>Site Position:</b>		<b>Northing:</b>	14,324,088.50 usft	<b>Latitude:</b>	39.405864
<b>From:</b>	Map	<b>Easting:</b>	2,496,462.30 usft	<b>Longitude:</b>	-107.969708
<b>Position Uncertainty:</b>	0.0 usft	<b>Slot Radius:</b>	13-3/16"	<b>Grid Convergence:</b>	1.92 °

<b>Well</b>	BATTLEMENT MESA 11C-35 795					
<b>Well Position</b>	<b>+N/-S</b>	0.0 usft	<b>Northing:</b>	14,323,626.85 usft	<b>Latitude:</b>	39.404517
	<b>+E/-W</b>	0.0 usft	<b>Easting:</b>	2,497,345.21 usft	<b>Longitude:</b>	-107.966642
<b>Position Uncertainty</b>		0.0 usft	<b>Wellhead Elevation:</b>	0.0 usft	<b>Ground Level:</b>	8,964.0 usft

<b>Wellbore</b>	OH				
<b>Magnetics</b>	<b>Model Name</b>	<b>Sample Date</b>	<b>Declination</b>	<b>Dip Angle</b>	<b>Field Strength</b>
			(°)	(°)	(nT)
	HDGM	11/12/2015	9.45	65.63	51,901

<b>Design</b>	PLAN #1			
<b>Audit Notes:</b>				
<b>Version:</b>	<b>Phase:</b>	PLAN	<b>Tie On Depth:</b>	0.0
<b>Vertical Section:</b>	<b>Depth From (TVD)</b>	<b>+N/-S</b>	<b>+E/-W</b>	<b>Direction</b>
	(usft)	(usft)	(usft)	(°)
	0.0	0.0	0.0	212.12

Plan Sections										
Measured Depth (usft)	Inclination (°)	Azimuth (°)	Vertical Depth (usft)	+N/-S (usft)	+E/-W (usft)	Dogleg Rate (°/100usft)	Build Rate (°/100usft)	Turn Rate (°/100usft)	TFO (°)	Target
0.0	0.00	0.00	0.0	0.0	0.0	0.00	0.00	0.00	0.00	
200.0	0.00	0.00	200.0	0.0	0.0	0.00	0.00	0.00	0.00	
858.6	19.76	212.12	845.6	-95.2	-59.8	3.00	3.00	0.00	212.12	
7,515.2	19.76	212.12	7,110.4	-2,001.1	-1,256.3	0.00	0.00	0.00	0.00	
8,173.8	0.00	0.00	7,756.0	-2,096.3	-1,316.0	3.00	-3.00	0.00	180.00	
10,290.8	0.00	0.00	9,873.0	-2,096.3	-1,316.0	0.00	0.00	0.00	0.00	BM 11C-35 PBHL

Planning Report

<b>Database:</b>	USA EDM 5000 Multi Users DB	<b>Local Co-ordinate Reference:</b>	Well BATTLEMENT MESA 11C-35 795
<b>Company:</b>	Caerus Oil & Gas	<b>TVD Reference:</b>	30' KB @ 8994.0usft
<b>Project:</b>	Garfield County, CO (UTM 12N)	<b>MD Reference:</b>	30' KB @ 8994.0usft
<b>Site:</b>	S26-T7S-R95W (26K)	<b>North Reference:</b>	True
<b>Well:</b>	BATTLEMENT MESA 11C-35 795	<b>Survey Calculation Method:</b>	Minimum Curvature
<b>Wellbore:</b>	OH		
<b>Design:</b>	PLAN #1		

Planned Survey									
Measured Depth (usft)	Inclination (°)	Azimuth (°)	Vertical Depth (usft)	+N/-S (usft)	+E/-W (usft)	Vertical Section (usft)	Dogleg Rate (°/100usft)	Build Rate (°/100u)	Comments / Formations
0.0	0.00	0.00	0.0	0.0	0.0	0.0	0.00	0.00	
100.0	0.00	0.00	100.0	0.0	0.0	0.0	0.00	0.00	
200.0	0.00	0.00	200.0	0.0	0.0	0.0	0.00	0.00	Start Build 3.00
300.0	3.00	212.12	300.0	-2.2	-1.4	2.6	3.00	3.00	
400.0	6.00	212.12	399.6	-8.9	-5.6	10.5	3.00	3.00	
500.0	9.00	212.12	498.8	-19.9	-12.5	23.5	3.00	3.00	
600.0	12.00	212.12	597.1	-35.3	-22.2	41.7	3.00	3.00	
700.0	15.00	212.12	694.3	-55.1	-34.6	65.1	3.00	3.00	
800.0	18.00	212.12	790.2	-79.2	-49.7	93.5	3.00	3.00	
858.6	19.76	212.12	845.6	-95.2	-59.8	112.4	3.00	3.00	Start 6656.6 hold at 858.6 MD
900.0	19.76	212.12	884.6	-107.1	-67.2	126.4	0.00	0.00	
1,000.0	19.76	212.12	978.7	-135.7	-85.2	160.2	0.00	0.00	
1,100.0	19.76	212.12	1,072.8	-164.3	-103.2	194.0	0.00	0.00	
1,200.0	19.76	212.12	1,166.9	-193.0	-121.1	227.8	0.00	0.00	
1,300.0	19.76	212.12	1,261.0	-221.6	-139.1	261.7	0.00	0.00	
1,400.0	19.76	212.12	1,355.2	-250.2	-157.1	295.5	0.00	0.00	
1,500.0	19.76	212.12	1,449.3	-278.9	-175.1	329.3	0.00	0.00	
1,600.0	19.76	212.12	1,543.4	-307.5	-193.0	363.1	0.00	0.00	
1,700.0	19.76	212.12	1,637.5	-336.1	-211.0	396.9	0.00	0.00	
1,800.0	19.76	212.12	1,731.6	-364.8	-229.0	430.7	0.00	0.00	
1,900.0	19.76	212.12	1,825.7	-393.4	-247.0	464.5	0.00	0.00	
2,000.0	19.76	212.12	1,919.8	-422.0	-264.9	498.3	0.00	0.00	
2,100.0	19.76	212.12	2,013.9	-450.6	-282.9	532.1	0.00	0.00	
2,200.0	19.76	212.12	2,108.1	-479.3	-300.9	565.9	0.00	0.00	
2,300.0	19.76	212.12	2,202.2	-507.9	-318.9	599.7	0.00	0.00	
2,400.0	19.76	212.12	2,296.3	-536.5	-336.8	633.5	0.00	0.00	
2,500.0	19.76	212.12	2,390.4	-565.2	-354.8	667.3	0.00	0.00	
2,600.0	19.76	212.12	2,484.5	-593.8	-372.8	701.1	0.00	0.00	
2,700.0	19.76	212.12	2,578.6	-622.4	-390.8	734.9	0.00	0.00	
2,800.0	19.76	212.12	2,672.7	-651.1	-408.7	768.7	0.00	0.00	
2,900.0	19.76	212.12	2,766.8	-679.7	-426.7	802.5	0.00	0.00	
3,000.0	19.76	212.12	2,861.0	-708.3	-444.7	836.3	0.00	0.00	
3,100.0	19.76	212.12	2,955.1	-737.0	-462.7	870.1	0.00	0.00	
3,200.0	19.76	212.12	3,049.2	-765.6	-480.6	903.9	0.00	0.00	
3,300.0	19.76	212.12	3,143.3	-794.2	-498.6	937.8	0.00	0.00	
3,400.0	19.76	212.12	3,237.4	-822.8	-516.6	971.6	0.00	0.00	
3,500.0	19.76	212.12	3,331.5	-851.5	-534.6	1,005.4	0.00	0.00	
3,600.0	19.76	212.12	3,425.6	-880.1	-552.5	1,039.2	0.00	0.00	
3,700.0	19.76	212.12	3,519.7	-908.7	-570.5	1,073.0	0.00	0.00	
3,800.0	19.76	212.12	3,613.9	-937.4	-588.5	1,106.8	0.00	0.00	
3,900.0	19.76	212.12	3,708.0	-966.0	-606.4	1,140.6	0.00	0.00	
4,000.0	19.76	212.12	3,802.1	-994.6	-624.4	1,174.4	0.00	0.00	
4,100.0	19.76	212.12	3,896.2	-1,023.3	-642.4	1,208.2	0.00	0.00	
4,200.0	19.76	212.12	3,990.3	-1,051.9	-660.4	1,242.0	0.00	0.00	
4,300.0	19.76	212.12	4,084.4	-1,080.5	-678.3	1,275.8	0.00	0.00	
4,400.0	19.76	212.12	4,178.5	-1,109.1	-696.3	1,309.6	0.00	0.00	
4,500.0	19.76	212.12	4,272.6	-1,137.8	-714.3	1,343.4	0.00	0.00	
4,600.0	19.76	212.12	4,366.8	-1,166.4	-732.3	1,377.2	0.00	0.00	
4,700.0	19.76	212.12	4,460.9	-1,195.0	-750.2	1,411.0	0.00	0.00	
4,800.0	19.76	212.12	4,555.0	-1,223.7	-768.2	1,444.8	0.00	0.00	
4,900.0	19.76	212.12	4,649.1	-1,252.3	-786.2	1,478.6	0.00	0.00	
5,000.0	19.76	212.12	4,743.2	-1,280.9	-804.2	1,512.4	0.00	0.00	

## Planning Report

<b>Database:</b>	USA EDM 5000 Multi Users DB	<b>Local Co-ordinate Reference:</b>	Well BATTLEMENT MESA 11C-35 795
<b>Company:</b>	Caerus Oil & Gas	<b>TVD Reference:</b>	30' KB @ 8994.0usft
<b>Project:</b>	Garfield County, CO (UTM 12N)	<b>MD Reference:</b>	30' KB @ 8994.0usft
<b>Site:</b>	S26-T7S-R95W (26K)	<b>North Reference:</b>	True
<b>Well:</b>	BATTLEMENT MESA 11C-35 795	<b>Survey Calculation Method:</b>	Minimum Curvature
<b>Wellbore:</b>	OH		
<b>Design:</b>	PLAN #1		

Planned Survey									
Measured Depth (usft)	Inclination (°)	Azimuth (°)	Vertical Depth (usft)	+N/-S (usft)	+E/-W (usft)	Vertical Section (usft)	Dogleg Rate (°/100usft)	Build Rate (°/100u)	Comments / Formations
5,100.0	19.76	212.12	4,837.3	-1,309.6	-822.1	1,546.2	0.00	0.00	
5,200.0	19.76	212.12	4,931.4	-1,338.2	-840.1	1,580.0	0.00	0.00	
5,300.0	19.76	212.12	5,025.6	-1,366.8	-858.1	1,613.9	0.00	0.00	
5,400.0	19.76	212.12	5,119.7	-1,395.5	-876.1	1,647.7	0.00	0.00	
5,500.0	19.76	212.12	5,213.8	-1,424.1	-894.0	1,681.5	0.00	0.00	
5,600.0	19.76	212.12	5,307.9	-1,452.7	-912.0	1,715.3	0.00	0.00	
5,700.0	19.76	212.12	5,402.0	-1,481.3	-930.0	1,749.1	0.00	0.00	
5,800.0	19.76	212.12	5,496.1	-1,510.0	-948.0	1,782.9	0.00	0.00	
5,900.0	19.76	212.12	5,590.2	-1,538.6	-965.9	1,816.7	0.00	0.00	
6,000.0	19.76	212.12	5,684.3	-1,567.2	-983.9	1,850.5	0.00	0.00	
6,100.0	19.76	212.12	5,778.5	-1,595.9	-1,001.9	1,884.3	0.00	0.00	
6,200.0	19.76	212.12	5,872.6	-1,624.5	-1,019.9	1,918.1	0.00	0.00	
6,300.0	19.76	212.12	5,966.7	-1,653.1	-1,037.8	1,951.9	0.00	0.00	
6,400.0	19.76	212.12	6,060.8	-1,681.8	-1,055.8	1,985.7	0.00	0.00	
6,500.0	19.76	212.12	6,154.9	-1,710.4	-1,073.8	2,019.5	0.00	0.00	
6,600.0	19.76	212.12	6,249.0	-1,739.0	-1,091.8	2,053.3	0.00	0.00	
6,700.0	19.76	212.12	6,343.1	-1,767.7	-1,109.7	2,087.1	0.00	0.00	
6,800.0	19.76	212.12	6,437.2	-1,796.3	-1,127.7	2,120.9	0.00	0.00	
6,900.0	19.76	212.12	6,531.4	-1,824.9	-1,145.7	2,154.7	0.00	0.00	
7,000.0	19.76	212.12	6,625.5	-1,853.5	-1,163.6	2,188.5	0.00	0.00	
7,100.0	19.76	212.12	6,719.6	-1,882.2	-1,181.6	2,222.3	0.00	0.00	
7,200.0	19.76	212.12	6,813.7	-1,910.8	-1,199.6	2,256.1	0.00	0.00	
7,222.6	19.76	212.12	6,835.0	-1,917.3	-1,203.7	2,263.8	0.00	0.00	OHIO_CREEK.MBL (SSTVD)
7,300.0	19.76	212.12	6,907.8	-1,939.4	-1,217.6	2,290.0	0.00	0.00	
7,400.0	19.76	212.12	7,001.9	-1,968.1	-1,235.5	2,323.8	0.00	0.00	
7,500.0	19.76	212.12	7,096.0	-1,996.7	-1,253.5	2,357.6	0.00	0.00	
7,515.2	19.76	212.12	7,110.4	-2,001.1	-1,256.3	2,362.7	0.00	0.00	Start Drop -3.00
7,575.1	17.96	212.12	7,167.0	-2,017.4	-1,266.5	2,382.1	3.00	-3.00	WILLIAMS_FORK.MBL (SSTVD)
7,600.0	17.22	212.12	7,190.8	-2,023.8	-1,270.5	2,389.6	3.00	-3.00	
7,700.0	14.22	212.12	7,287.0	-2,046.8	-1,284.9	2,416.7	3.00	-3.00	
7,800.0	11.22	212.12	7,384.5	-2,065.4	-1,296.6	2,438.7	3.00	-3.00	
7,900.0	8.22	212.12	7,483.1	-2,079.7	-1,305.6	2,455.6	3.00	-3.00	
8,000.0	5.22	212.12	7,582.4	-2,089.6	-1,311.8	2,467.2	3.00	-3.00	
8,100.0	2.22	212.12	7,682.2	-2,095.1	-1,315.3	2,473.7	3.00	-3.00	
8,173.8	0.00	0.00	7,756.0	-2,096.3	-1,316.0	2,475.2	3.00	-3.00	Start 2117.0 hold at 8173.8 MD
8,200.0	0.00	0.00	7,782.2	-2,096.3	-1,316.0	2,475.2	0.00	0.00	
8,273.8	0.00	0.00	7,856.0	-2,096.3	-1,316.0	2,475.2	0.00	0.00	TOP_GAS.MBL (SSTVD)
8,300.0	0.00	0.00	7,882.2	-2,096.3	-1,316.0	2,475.2	0.00	0.00	
8,400.0	0.00	0.00	7,982.2	-2,096.3	-1,316.0	2,475.2	0.00	0.00	
8,500.0	0.00	0.00	8,082.2	-2,096.3	-1,316.0	2,475.2	0.00	0.00	
8,600.0	0.00	0.00	8,182.2	-2,096.3	-1,316.0	2,475.2	0.00	0.00	
8,700.0	0.00	0.00	8,282.2	-2,096.3	-1,316.0	2,475.2	0.00	0.00	
8,800.0	0.00	0.00	8,382.2	-2,096.3	-1,316.0	2,475.2	0.00	0.00	
8,900.0	0.00	0.00	8,482.2	-2,096.3	-1,316.0	2,475.2	0.00	0.00	
9,000.0	0.00	0.00	8,582.2	-2,096.3	-1,316.0	2,475.2	0.00	0.00	
9,100.0	0.00	0.00	8,682.2	-2,096.3	-1,316.0	2,475.2	0.00	0.00	
9,200.0	0.00	0.00	8,782.2	-2,096.3	-1,316.0	2,475.2	0.00	0.00	
9,300.0	0.00	0.00	8,882.2	-2,096.3	-1,316.0	2,475.2	0.00	0.00	
9,400.0	0.00	0.00	8,982.2	-2,096.3	-1,316.0	2,475.2	0.00	0.00	
9,500.0	0.00	0.00	9,082.2	-2,096.3	-1,316.0	2,475.2	0.00	0.00	
9,600.0	0.00	0.00	9,182.2	-2,096.3	-1,316.0	2,475.2	0.00	0.00	
9,615.8	0.00	0.00	9,198.0	-2,096.3	-1,316.0	2,475.2	0.00	0.00	CAMEO.MBL (SSTVD)

## Planning Report

<b>Database:</b>	USA EDM 5000 Multi Users DB	<b>Local Co-ordinate Reference:</b>	Well BATTLEMENT MESA 11C-35 795
<b>Company:</b>	Caerus Oil & Gas	<b>TVD Reference:</b>	30' KB @ 8994.0usft
<b>Project:</b>	Garfield County, CO (UTM 12N)	<b>MD Reference:</b>	30' KB @ 8994.0usft
<b>Site:</b>	S26-T7S-R95W (26K)	<b>North Reference:</b>	True
<b>Well:</b>	BATTLEMENT MESA 11C-35 795	<b>Survey Calculation Method:</b>	Minimum Curvature
<b>Wellbore:</b>	OH		
<b>Design:</b>	PLAN #1		

Planned Survey									
Measured Depth (usft)	Inclination (°)	Azimuth (°)	Vertical Depth (usft)	+N/-S (usft)	+E/-W (usft)	Vertical Section (usft)	Dogleg Rate (°/100usft)	Build Rate (°/100u)	Comments / Formations
9,700.0	0.00	0.00	9,282.2	-2,096.3	-1,316.0	2,475.2	0.00	0.00	
9,800.0	0.00	0.00	9,382.2	-2,096.3	-1,316.0	2,475.2	0.00	0.00	
9,900.0	0.00	0.00	9,482.2	-2,096.3	-1,316.0	2,475.2	0.00	0.00	
10,000.0	0.00	0.00	9,582.2	-2,096.3	-1,316.0	2,475.2	0.00	0.00	
10,100.0	0.00	0.00	9,682.2	-2,096.3	-1,316.0	2,475.2	0.00	0.00	
10,140.8	0.00	0.00	9,723.0	-2,096.3	-1,316.0	2,475.2	0.00	0.00	ROLLINS.MBL (SSTVD)
10,200.0	0.00	0.00	9,782.2	-2,096.3	-1,316.0	2,475.2	0.00	0.00	
10,290.8	0.00	0.00	9,873.0	-2,096.3	-1,316.0	2,475.2	0.00	0.00	TD at 10290.8 - BM 11C-35 PBHL

Targets									
Target Name	Dip Angle (°)	Dip Dir. (°)	TVD (usft)	+N/-S (usft)	+E/-W (usft)	Northing (usft)	Easting (usft)	Latitude	Longitude
BM 11C-35 PBHL - hit/miss target - Shape - plan hits target center - Circle (radius 50.0)	0.00	0.00	9,873.0	-2,096.3	-1,316.0	14,321,487.50	2,496,100.40	39.398764	-107.971296

Formations					
Measured Depth (usft)	Vertical Depth (usft)	Name	Lithology	Dip (°)	Dip Direction (°)
7,222.6	6,835.0	OHIO_CREEK.MBL (SSTVD)		0.00	
7,575.1	7,167.0	WILLIAMS_FORK.MBL (SSTVD)		0.00	
8,273.8	7,856.0	TOP_GAS.MBL (SSTVD)		0.00	
9,615.8	9,198.0	CAMEO.MBL (SSTVD)		0.00	
10,140.8	9,723.0	ROLLINS.MBL (SSTVD)		0.00	

Plan Annotations				
Measured Depth (usft)	Vertical Depth (usft)	+N/-S (usft)	+E/-W (usft)	Comment
200.0	200.0	0.0	0.0	Start Build 3.00
858.6	845.6	-95.2	-59.8	Start 6656.6 hold at 858.6 MD
7,515.2	7,110.4	-2,001.1	-1,256.3	Start Drop -3.00
8,173.8	7,756.0	-2,096.3	-1,316.0	Start 2117.0 hold at 8173.8 MD
10,290.8	9,873.0	-2,096.3	-1,316.0	TD at 10290.8