



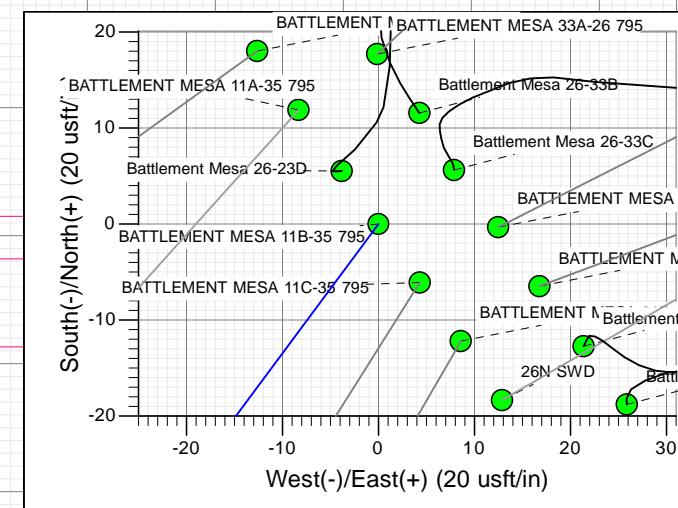
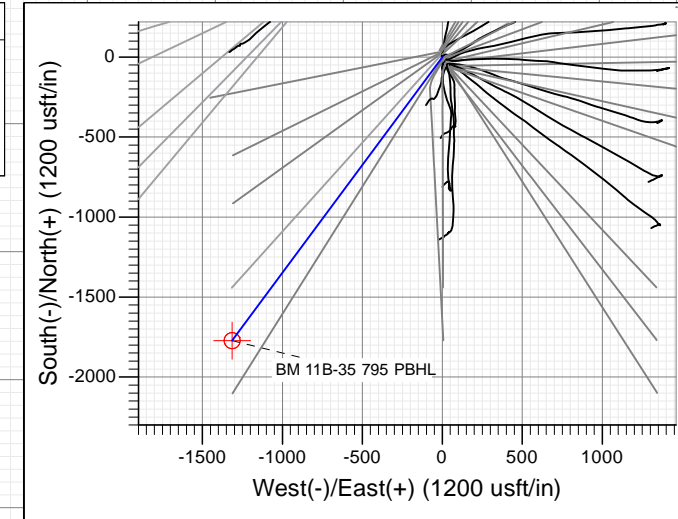
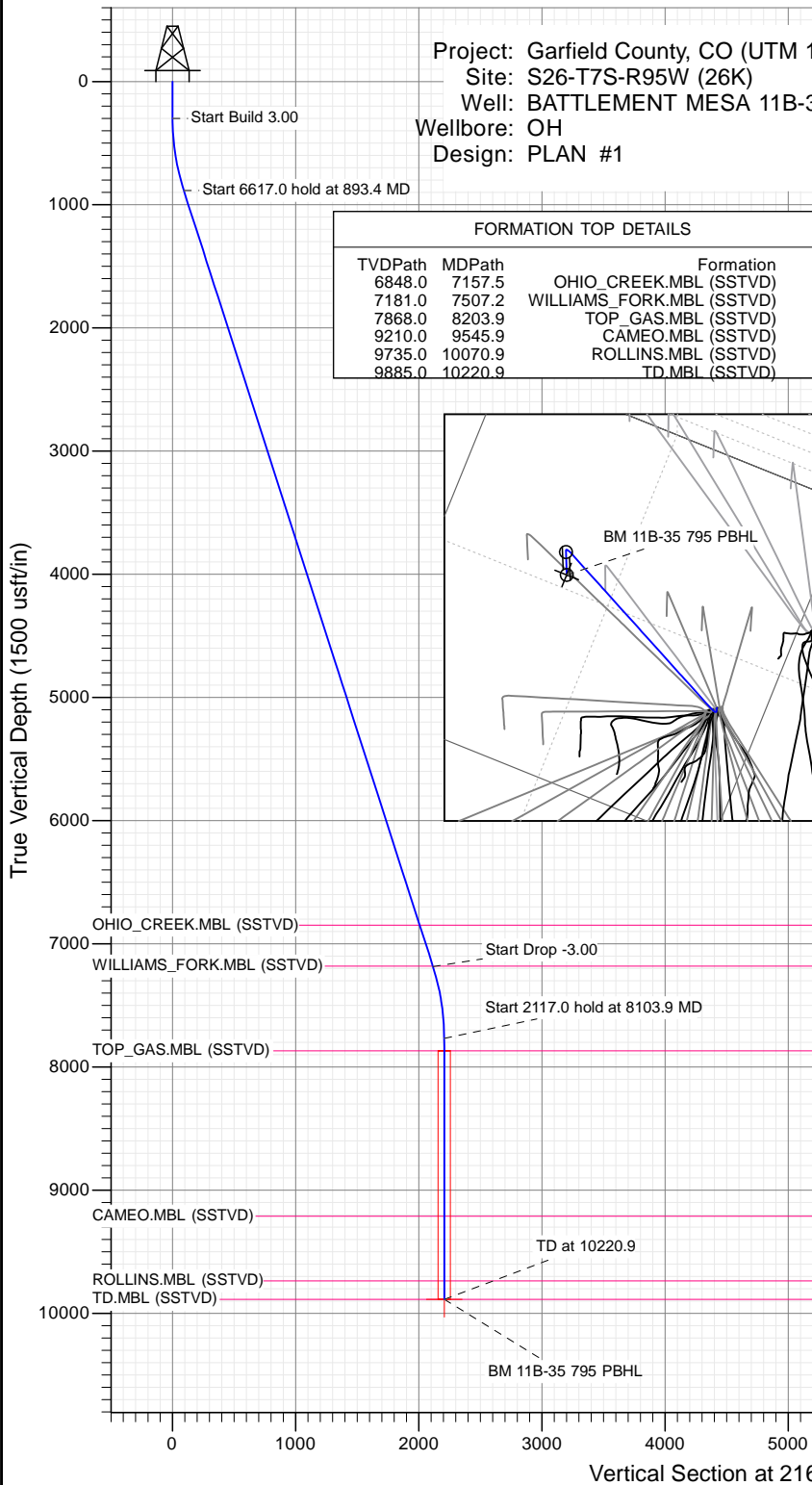
SECTION DETAILS

Sec	MD	Inc	Azi	TVD	+N-S	+E-W	Dleg	TFace	V/Sec	Target
1	0.0	0.00	0.00	0.0	0.0	0.0	0.00	0.00	0.0	
2	300.0	0.00	0.00	300.0	0.0	0.0	0.00	0.00	0.0	
3	893.4	17.80	216.55	883.9	-73.5	-54.5	3.00	216.55	91.5	
4	7510.4	17.80	216.55	7184.1	-1698.7	-1259.4	0.00	0.00	2114.6	
5	8103.9	0.00	0.00	7768.0	-1772.1	-1313.8	3.00	180.00	2206.0	
6	10220.9	0.00	0.00	9885.0	-1772.1	-1313.8	0.00	0.00	2206.0	BM 11B-35 795 PBHL

Project: Garfield County, CO (UTM 12)
 Site: S26-T7S-R95W (26K)
 Well: BATTLEMENT MESA 11B-35
 Wellbore: OH
 Design: PLAN #1

PLAN #1
 BATTLEMENT MESA 11B-35 795
 15XXX; LR
 30 KB @ 8964.0ust
 Ground Level @ 8964.0
 NAD 1927 - Western US
 Well BATTLEMENT MESA 11B-35 795, True North

Type	Target	Azimuth	Origin	Type	N/S	E/W	From
TD	No Target (Freehand)	216.55	Slot		0.0	0.0	TVD
Name		TVD	+N-S	+E/W	Latitude	Longitude	
BM 11B-35 795 PBHL		9885.0	-1772.1	-1313.8	39.399670	-107.971304	



CASING DETAILS
 No casing data is available

Azimuths to True North
 Magnetic North: 9.45°
 Magnetic Field
 Strength: 51901.2snT
 Dip Angle: 65.63°
 Date: 11/12/2015
 Model: HDGM



WELL DETAILS: BATTLEMENT MESA 11B-35 795

+N-S	+E-W	Northing	Ground Level:	8964.0	Latitude	Longitude
0.0	0.0	14323632.80	Easting	2497340.70	39.404533	-107.966657



Planning Report

Database:	USA EDM 5000 Multi Users DB	Local Co-ordinate Reference:	Well BATTLEMENT MESA 11B-35 795
Company:	Caerus Oil & Gas	TVD Reference:	30' KB @ 8994.0usft
Project:	Garfield County, CO (UTM 12N)	MD Reference:	30' KB @ 8994.0usft
Site:	S26-T7S-R95W (26K)	North Reference:	True
Well:	BATTLEMENT MESA 11B-35 795	Survey Calculation Method:	Minimum Curvature
Wellbore:	OH		
Design:	PLAN #1		

Project	Garfield County, CO (UTM 12N)		
Map System:	Universal Transverse Mercator (US Survey Feet)	System Datum:	Mean Sea Level
Geo Datum:	NAD 1927 - Western US		
Map Zone:	Zone 12N (114 W to 108 W)		

Site	S26-T7S-R95W (26K)				
Site Position:		Northing:	14,324,088.50 usft	Latitude:	39.405864
From:	Map	Easting:	2,496,462.30 usft	Longitude:	-107.969708
Position Uncertainty:	0.0 usft	Slot Radius:	13-3/16"	Grid Convergence:	1.92 °

Well	BATTLEMENT MESA 11B-35 795					
Well Position	+N/-S	0.0 usft	Northing:	14,323,632.80 usft	Latitude:	39.404533
	+E/-W	0.0 usft	Easting:	2,497,340.70 usft	Longitude:	-107.966657
Position Uncertainty		0.0 usft	Wellhead Elevation:	0.0 usft	Ground Level:	8,964.0 usft

Wellbore	OH				
Magnetics	Model Name	Sample Date	Declination	Dip Angle	Field Strength
			(°)	(°)	(nT)
	HDGM	11/12/2015	9.45	65.63	51,901

Design	PLAN #1			
Audit Notes:				
Version:	Phase:	PLAN	Tie On Depth:	0.0
Vertical Section:	Depth From (TVD)	+N/-S	+E/-W	Direction
	(usft)	(usft)	(usft)	(°)
	0.0	0.0	0.0	216.55

Plan Sections										
Measured Depth (usft)	Inclination (°)	Azimuth (°)	Vertical Depth (usft)	+N/-S (usft)	+E/-W (usft)	Dogleg Rate (°/100usft)	Build Rate (°/100usft)	Turn Rate (°/100usft)	TFO (°)	Target
0.0	0.00	0.00	0.0	0.0	0.0	0.00	0.00	0.00	0.00	
300.0	0.00	0.00	300.0	0.0	0.0	0.00	0.00	0.00	0.00	
893.4	17.80	216.55	883.9	-73.5	-54.5	3.00	3.00	0.00	216.55	
7,510.4	17.80	216.55	7,184.1	-1,698.7	-1,259.4	0.00	0.00	0.00	0.00	
8,103.9	0.00	0.00	7,768.0	-1,772.1	-1,313.8	3.00	-3.00	0.00	180.00	
10,220.9	0.00	0.00	9,885.0	-1,772.1	-1,313.8	0.00	0.00	0.00	0.00	BM 11B-35 795 PBHL

Planning Report

Database:	USA EDM 5000 Multi Users DB	Local Co-ordinate Reference:	Well BATTLEMENT MESA 11B-35 795
Company:	Caerus Oil & Gas	TVD Reference:	30' KB @ 8994.0usft
Project:	Garfield County, CO (UTM 12N)	MD Reference:	30' KB @ 8994.0usft
Site:	S26-T7S-R95W (26K)	North Reference:	True
Well:	BATTLEMENT MESA 11B-35 795	Survey Calculation Method:	Minimum Curvature
Wellbore:	OH		
Design:	PLAN #1		

Planned Survey									
Measured Depth (usft)	Inclination (°)	Azimuth (°)	Vertical Depth (usft)	+N/-S (usft)	+E/-W (usft)	Vertical Section (usft)	Dogleg Rate (°/100usft)	Build Rate (°/100u)	Comments / Formations
0.0	0.00	0.00	0.0	0.0	0.0	0.0	0.00	0.00	
100.0	0.00	0.00	100.0	0.0	0.0	0.0	0.00	0.00	
200.0	0.00	0.00	200.0	0.0	0.0	0.0	0.00	0.00	
300.0	0.00	0.00	300.0	0.0	0.0	0.0	0.00	0.00	Start Build 3.00
400.0	3.00	216.55	400.0	-2.1	-1.6	2.6	3.00	3.00	
500.0	6.00	216.55	499.6	-8.4	-6.2	10.5	3.00	3.00	
600.0	9.00	216.55	598.8	-18.9	-14.0	23.5	3.00	3.00	
700.0	12.00	216.55	697.1	-33.5	-24.9	41.7	3.00	3.00	
800.0	15.00	216.55	794.3	-52.3	-38.8	65.1	3.00	3.00	
893.4	17.80	216.55	883.9	-73.5	-54.5	91.5	3.00	3.00	Start 6617.0 hold at 893.4 MD
900.0	17.80	216.55	890.2	-75.1	-55.7	93.5	0.00	0.00	
1,000.0	17.80	216.55	985.4	-99.6	-73.9	124.0	0.00	0.00	
1,100.0	17.80	216.55	1,080.6	-124.2	-92.1	154.6	0.00	0.00	
1,200.0	17.80	216.55	1,175.8	-148.8	-110.3	185.2	0.00	0.00	
1,300.0	17.80	216.55	1,271.0	-173.3	-128.5	215.8	0.00	0.00	
1,400.0	17.80	216.55	1,366.2	-197.9	-146.7	246.3	0.00	0.00	
1,500.0	17.80	216.55	1,461.5	-222.4	-164.9	276.9	0.00	0.00	
1,600.0	17.80	216.55	1,556.7	-247.0	-183.1	307.5	0.00	0.00	
1,700.0	17.80	216.55	1,651.9	-271.6	-201.3	338.1	0.00	0.00	
1,800.0	17.80	216.55	1,747.1	-296.1	-219.5	368.6	0.00	0.00	
1,900.0	17.80	216.55	1,842.3	-320.7	-237.8	399.2	0.00	0.00	
2,000.0	17.80	216.55	1,937.5	-345.3	-256.0	429.8	0.00	0.00	
2,100.0	17.80	216.55	2,032.7	-369.8	-274.2	460.4	0.00	0.00	
2,200.0	17.80	216.55	2,127.9	-394.4	-292.4	490.9	0.00	0.00	
2,300.0	17.80	216.55	2,223.1	-418.9	-310.6	521.5	0.00	0.00	
2,400.0	17.80	216.55	2,318.4	-443.5	-328.8	552.1	0.00	0.00	
2,500.0	17.80	216.55	2,413.6	-468.1	-347.0	582.7	0.00	0.00	
2,600.0	17.80	216.55	2,508.8	-492.6	-365.2	613.2	0.00	0.00	
2,700.0	17.80	216.55	2,604.0	-517.2	-383.4	643.8	0.00	0.00	
2,800.0	17.80	216.55	2,699.2	-541.7	-401.6	674.4	0.00	0.00	
2,900.0	17.80	216.55	2,794.4	-566.3	-419.8	705.0	0.00	0.00	
3,000.0	17.80	216.55	2,889.6	-590.9	-438.1	735.5	0.00	0.00	
3,100.0	17.80	216.55	2,984.8	-615.4	-456.3	766.1	0.00	0.00	
3,200.0	17.80	216.55	3,080.0	-640.0	-474.5	796.7	0.00	0.00	
3,300.0	17.80	216.55	3,175.3	-664.5	-492.7	827.3	0.00	0.00	
3,400.0	17.80	216.55	3,270.5	-689.1	-510.9	857.8	0.00	0.00	
3,500.0	17.80	216.55	3,365.7	-713.7	-529.1	888.4	0.00	0.00	
3,600.0	17.80	216.55	3,460.9	-738.2	-547.3	919.0	0.00	0.00	
3,700.0	17.80	216.55	3,556.1	-762.8	-565.5	949.6	0.00	0.00	
3,800.0	17.80	216.55	3,651.3	-787.3	-583.7	980.1	0.00	0.00	
3,900.0	17.80	216.55	3,746.5	-811.9	-601.9	1,010.7	0.00	0.00	
4,000.0	17.80	216.55	3,841.7	-836.5	-620.1	1,041.3	0.00	0.00	
4,100.0	17.80	216.55	3,936.9	-861.0	-638.4	1,071.8	0.00	0.00	
4,200.0	17.80	216.55	4,032.2	-885.6	-656.6	1,102.4	0.00	0.00	
4,300.0	17.80	216.55	4,127.4	-910.1	-674.8	1,133.0	0.00	0.00	
4,400.0	17.80	216.55	4,222.6	-934.7	-693.0	1,163.6	0.00	0.00	
4,500.0	17.80	216.55	4,317.8	-959.3	-711.2	1,194.1	0.00	0.00	
4,600.0	17.80	216.55	4,413.0	-983.8	-729.4	1,224.7	0.00	0.00	
4,700.0	17.80	216.55	4,508.2	-1,008.4	-747.6	1,255.3	0.00	0.00	
4,800.0	17.80	216.55	4,603.4	-1,033.0	-765.8	1,285.9	0.00	0.00	
4,900.0	17.80	216.55	4,698.6	-1,057.5	-784.0	1,316.4	0.00	0.00	
5,000.0	17.80	216.55	4,793.8	-1,082.1	-802.2	1,347.0	0.00	0.00	

Planning Report

Database:	USA EDM 5000 Multi Users DB	Local Co-ordinate Reference:	Well BATTLEMENT MESA 11B-35 795
Company:	Caerus Oil & Gas	TVD Reference:	30' KB @ 8994.0usft
Project:	Garfield County, CO (UTM 12N)	MD Reference:	30' KB @ 8994.0usft
Site:	S26-T7S-R95W (26K)	North Reference:	True
Well:	BATTLEMENT MESA 11B-35 795	Survey Calculation Method:	Minimum Curvature
Wellbore:	OH		
Design:	PLAN #1		

Planned Survey									
Measured Depth (usft)	Inclination (°)	Azimuth (°)	Vertical Depth (usft)	+N/-S (usft)	+E/-W (usft)	Vertical Section (usft)	Dogleg Rate (°/100usft)	Build Rate (°/100u)	Comments / Formations
5,100.0	17.80	216.55	4,889.1	-1,106.6	-820.4	1,377.6	0.00	0.00	
5,200.0	17.80	216.55	4,984.3	-1,131.2	-838.6	1,408.2	0.00	0.00	
5,300.0	17.80	216.55	5,079.5	-1,155.8	-856.9	1,438.7	0.00	0.00	
5,400.0	17.80	216.55	5,174.7	-1,180.3	-875.1	1,469.3	0.00	0.00	
5,500.0	17.80	216.55	5,269.9	-1,204.9	-893.3	1,499.9	0.00	0.00	
5,600.0	17.80	216.55	5,365.1	-1,229.4	-911.5	1,530.5	0.00	0.00	
5,700.0	17.80	216.55	5,460.3	-1,254.0	-929.7	1,561.0	0.00	0.00	
5,800.0	17.80	216.55	5,555.5	-1,278.6	-947.9	1,591.6	0.00	0.00	
5,900.0	17.80	216.55	5,650.7	-1,303.1	-966.1	1,622.2	0.00	0.00	
6,000.0	17.80	216.55	5,746.0	-1,327.7	-984.3	1,652.8	0.00	0.00	
6,100.0	17.80	216.55	5,841.2	-1,352.2	-1,002.5	1,683.3	0.00	0.00	
6,200.0	17.80	216.55	5,936.4	-1,376.8	-1,020.7	1,713.9	0.00	0.00	
6,300.0	17.80	216.55	6,031.6	-1,401.4	-1,038.9	1,744.5	0.00	0.00	
6,400.0	17.80	216.55	6,126.8	-1,425.9	-1,057.2	1,775.1	0.00	0.00	
6,500.0	17.80	216.55	6,222.0	-1,450.5	-1,075.4	1,805.6	0.00	0.00	
6,600.0	17.80	216.55	6,317.2	-1,475.0	-1,093.6	1,836.2	0.00	0.00	
6,700.0	17.80	216.55	6,412.4	-1,499.6	-1,111.8	1,866.8	0.00	0.00	
6,800.0	17.80	216.55	6,507.7	-1,524.2	-1,130.0	1,897.4	0.00	0.00	
6,900.0	17.80	216.55	6,602.9	-1,548.7	-1,148.2	1,927.9	0.00	0.00	
7,000.0	17.80	216.55	6,698.1	-1,573.3	-1,166.4	1,958.5	0.00	0.00	
7,100.0	17.80	216.55	6,793.3	-1,597.9	-1,184.6	1,989.1	0.00	0.00	
7,157.5	17.80	216.55	6,848.0	-1,612.0	-1,195.1	2,006.7	0.00	0.00	OHIO_CREEK.MBL (SSTVD)
7,200.0	17.80	216.55	6,888.5	-1,622.4	-1,202.8	2,019.7	0.00	0.00	
7,300.0	17.80	216.55	6,983.7	-1,647.0	-1,221.0	2,050.2	0.00	0.00	
7,400.0	17.80	216.55	7,078.9	-1,671.5	-1,239.2	2,080.8	0.00	0.00	
7,500.0	17.80	216.55	7,174.1	-1,696.1	-1,257.5	2,111.4	0.00	0.00	
7,507.2	17.80	216.55	7,181.0	-1,697.9	-1,258.8	2,113.6	0.00	0.00	WILLIAMS_FORK.MBL (SSTVD)
7,510.4	17.80	216.55	7,184.1	-1,698.7	-1,259.4	2,114.6	0.00	0.00	Start Drop -3.00
7,600.0	15.12	216.55	7,270.0	-1,719.0	-1,274.5	2,139.9	3.00	-3.00	
7,700.0	12.12	216.55	7,367.1	-1,738.0	-1,288.5	2,163.5	3.00	-3.00	
7,800.0	9.12	216.55	7,465.4	-1,752.8	-1,299.5	2,181.9	3.00	-3.00	
7,900.0	6.12	216.55	7,564.5	-1,763.4	-1,307.4	2,195.2	3.00	-3.00	
8,000.0	3.12	216.55	7,664.2	-1,769.9	-1,312.1	2,203.2	3.00	-3.00	
8,100.0	0.12	216.55	7,764.1	-1,772.1	-1,313.8	2,206.0	3.00	-3.00	
8,103.9	0.00	0.00	7,768.0	-1,772.1	-1,313.8	2,206.0	3.00	-3.00	Start 2117.0 hold at 8103.9 MD
8,200.0	0.00	0.00	7,864.1	-1,772.1	-1,313.8	2,206.0	0.00	0.00	
8,203.9	0.00	0.00	7,868.0	-1,772.1	-1,313.8	2,206.0	0.00	0.00	TOP_GAS.MBL (SSTVD)
8,300.0	0.00	0.00	7,964.1	-1,772.1	-1,313.8	2,206.0	0.00	0.00	
8,400.0	0.00	0.00	8,064.1	-1,772.1	-1,313.8	2,206.0	0.00	0.00	
8,500.0	0.00	0.00	8,164.1	-1,772.1	-1,313.8	2,206.0	0.00	0.00	
8,600.0	0.00	0.00	8,264.1	-1,772.1	-1,313.8	2,206.0	0.00	0.00	
8,700.0	0.00	0.00	8,364.1	-1,772.1	-1,313.8	2,206.0	0.00	0.00	
8,800.0	0.00	0.00	8,464.1	-1,772.1	-1,313.8	2,206.0	0.00	0.00	
8,900.0	0.00	0.00	8,564.1	-1,772.1	-1,313.8	2,206.0	0.00	0.00	
9,000.0	0.00	0.00	8,664.1	-1,772.1	-1,313.8	2,206.0	0.00	0.00	
9,100.0	0.00	0.00	8,764.1	-1,772.1	-1,313.8	2,206.0	0.00	0.00	
9,200.0	0.00	0.00	8,864.1	-1,772.1	-1,313.8	2,206.0	0.00	0.00	
9,300.0	0.00	0.00	8,964.1	-1,772.1	-1,313.8	2,206.0	0.00	0.00	
9,400.0	0.00	0.00	9,064.1	-1,772.1	-1,313.8	2,206.0	0.00	0.00	
9,500.0	0.00	0.00	9,164.1	-1,772.1	-1,313.8	2,206.0	0.00	0.00	
9,545.9	0.00	0.00	9,210.0	-1,772.1	-1,313.8	2,206.0	0.00	0.00	CAMEO.MBL (SSTVD)
9,600.0	0.00	0.00	9,264.1	-1,772.1	-1,313.8	2,206.0	0.00	0.00	

Planning Report

Database:	USA EDM 5000 Multi Users DB	Local Co-ordinate Reference:	Well BATTLEMENT MESA 11B-35 795
Company:	Caerus Oil & Gas	TVD Reference:	30' KB @ 8994.0usft
Project:	Garfield County, CO (UTM 12N)	MD Reference:	30' KB @ 8994.0usft
Site:	S26-T7S-R95W (26K)	North Reference:	True
Well:	BATTLEMENT MESA 11B-35 795	Survey Calculation Method:	Minimum Curvature
Wellbore:	OH		
Design:	PLAN #1		

Planned Survey									
Measured Depth (usft)	Inclination (°)	Azimuth (°)	Vertical Depth (usft)	+N/-S (usft)	+E/-W (usft)	Vertical Section (usft)	Dogleg Rate (°/100usft)	Build Rate (°/100u)	Comments / Formations
9,700.0	0.00	0.00	9,364.1	-1,772.1	-1,313.8	2,206.0	0.00	0.00	
9,800.0	0.00	0.00	9,464.1	-1,772.1	-1,313.8	2,206.0	0.00	0.00	
9,900.0	0.00	0.00	9,564.1	-1,772.1	-1,313.8	2,206.0	0.00	0.00	
10,000.0	0.00	0.00	9,664.1	-1,772.1	-1,313.8	2,206.0	0.00	0.00	
10,070.9	0.00	0.00	9,735.0	-1,772.1	-1,313.8	2,206.0	0.00	0.00	ROLLINS.MBL (SSTVD)
10,100.0	0.00	0.00	9,764.1	-1,772.1	-1,313.8	2,206.0	0.00	0.00	
10,200.0	0.00	0.00	9,864.1	-1,772.1	-1,313.8	2,206.0	0.00	0.00	
10,220.9	0.00	0.00	9,885.0	-1,772.1	-1,313.8	2,206.0	0.00	0.00	TD at 10220.9 - TD.MBL (SSTVD) - BM 11B-35

Targets											
Target Name	- hit/miss target	- Shape	Dip Angle (°)	Dip Dir. (°)	TVD (usft)	+N/-S (usft)	+E/-W (usft)	Northing (usft)	Easting (usft)	Latitude	Longitude
BM 11B-35 795 PBHL			0.00	0.00	9,885.0	-1,772.1	-1,313.8	14,321,817.50	2,496,087.20	39.399670	-107.971304
- plan hits target center											
- Circle (radius 50.0)											

Formations						
Measured Depth (usft)	Vertical Depth (usft)	Name	Lithology	Dip (°)	Dip Direction (°)	
7,157.5	6,848.0	OHIO_CREEK.MBL (SSTVD)		0.00		
7,507.2	7,181.0	WILLIAMS_FORK.MBL (SSTVD)		0.00		
8,203.9	7,868.0	TOP_GAS.MBL (SSTVD)		0.00		
9,545.9	9,210.0	CAMEO.MBL (SSTVD)		0.00		
10,070.9	9,735.0	ROLLINS.MBL (SSTVD)		0.00		
10,220.9	9,885.0	TD.MBL (SSTVD)		0.00		

Plan Annotations					
Measured Depth (usft)	Vertical Depth (usft)	+N/-S (usft)	+E/-W (usft)	Comment	
300.0	300.0	0.0	0.0	Start Build 3.00	
893.4	883.9	-73.5	-54.5	Start 6617.0 hold at 893.4 MD	
7,510.4	7,184.1	-1,698.7	-1,259.4	Start Drop -3.00	
8,103.9	7,768.0	-1,772.1	-1,313.8	Start 2117.0 hold at 8103.9 MD	
10,220.9	9,885.0	-1,772.1	-1,313.8	TD at 10220.9	