



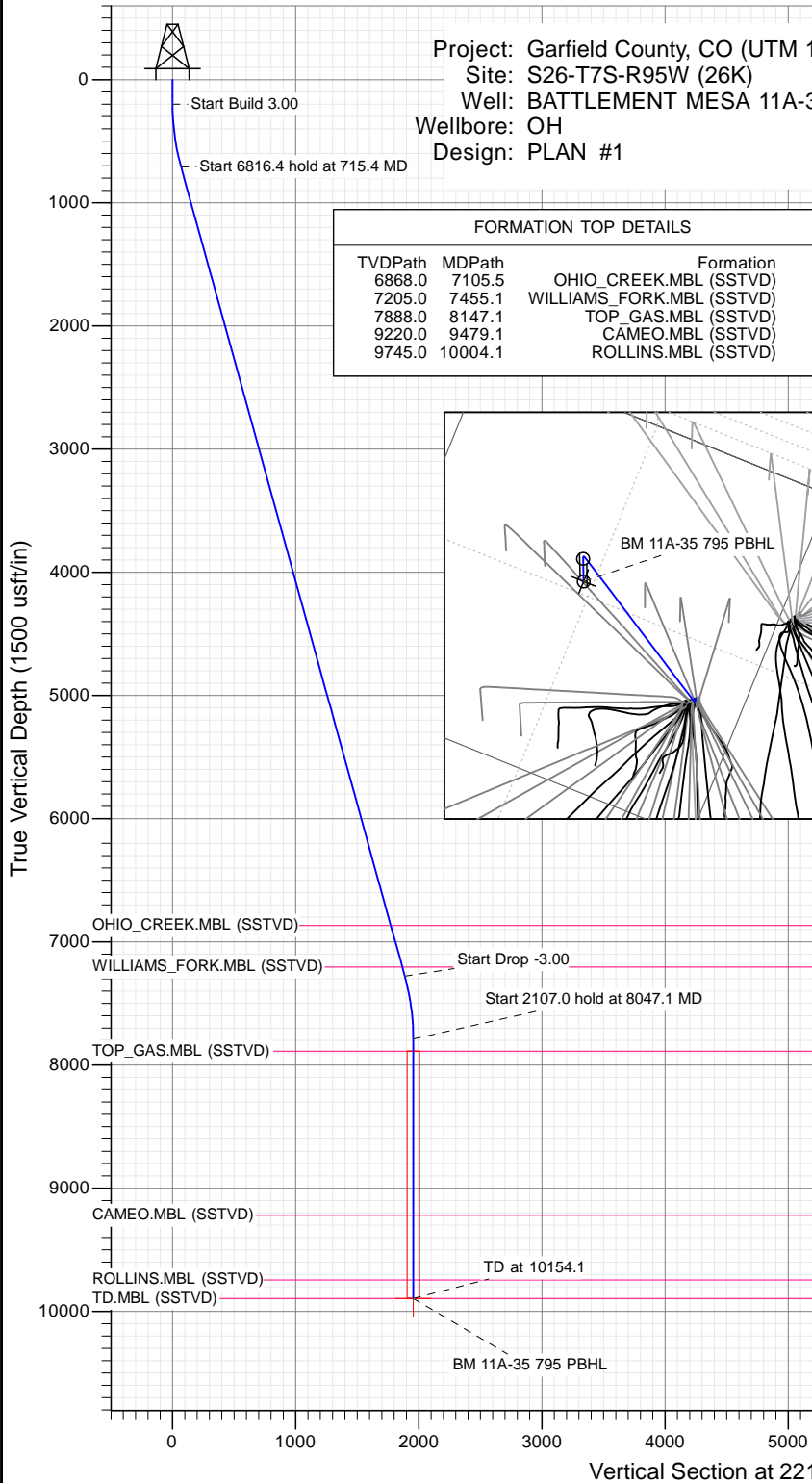
SECTION DETAILS

Sec	MD	Inc	Azi	TVD	+N-S	+E-W	Dleg	TFace	VSeCT	Target
1	0.0	0.00	0.00	0.0	0.0	0.0	0.00	0.00	0.0	
2	200.0	0.00	0.00	200.0	0.0	0.0	0.00	0.00	0.0	
3	715.4	15.46	221.97	709.1	-51.4	-46.2	3.00	221.97	69.1	
4	7531.8	15.46	221.97	7278.9	-1402.4	-1261.4	0.00	0.00	1886.2	
5	8047.1	0.00	0.00	7788.0	-1453.8	-1307.6	3.00	180.00	1955.3	
6	10154.1	0.00	0.00	9895.0	-1453.8	-1307.6	0.00	0.00	1955.3	BM 11A-35 795 PBHL

Project: Garfield County, CO (UTM 12)
 Site: S26-T7S-R95W (26K)
 Well: BATTLEMENT MESA 11A-35
 Wellbore: OH
 Design: PLAN #1

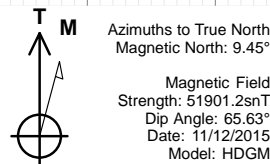
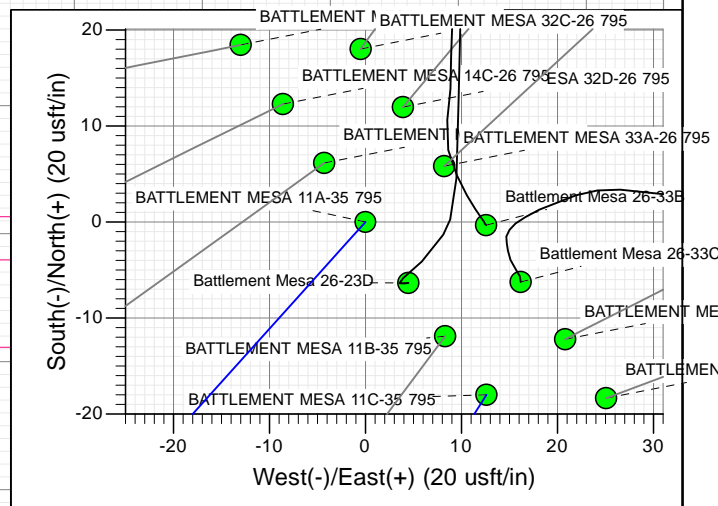
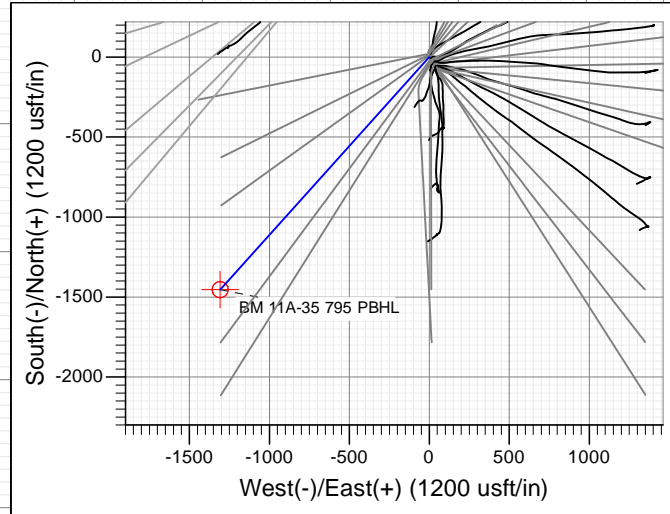
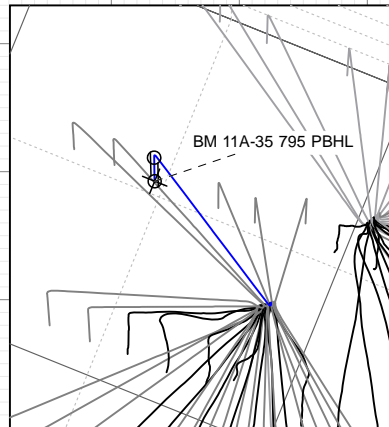
PLAN #1
 BATTLEMENT MESA 11A-35 795
 15XXX; LR
 30 KB @ 8964.0usft
 Ground Level @ 8964.0
 NAD 1927 - Western US
 Well BATTLEMENT MESA 11A-35 795, True North

Type	Target	Azimuth	Origin	N/S	E/W	From
TD	No Target (Freehand)	221.97	Slot	0.0	0.0	TVD
Name		TVD	+N-S	+E/W	Latitude	Longitude
BM 11A-35 795 PBHL		9895.0	-1453.8	-1307.6	39.400576	-107.971311



FORMATION TOP DETAILS

TVDPATH	MDPATH	FORMATION
6868.0	7105.5	OHIO_CREEK.MBL (SSTVD)
7205.0	7455.1	WILLIAMS_FORK.MBL (SSTVD)
7888.0	8147.1	TOP_GAS.MBL (SSTVD)
9220.0	9479.1	CAMEO.MBL (SSTVD)
9745.0	10004.1	ROLLINS.MBL (SSTVD)



CASING DETAILS
 No casing data is available



WELL DETAILS: BATTLEMENT MESA 11A-35 795

+N-S	+E-W	Northing	Easting	Latitude	Longitude
0.0	0.0	14323644.40	2497332.00	39.404566	-107.966686

Ground Level: 8964.0



Planning Report

Database:	USA EDM 5000 Multi Users DB	Local Co-ordinate Reference:	Well BATTLEMENT MESA 11A-35 795
Company:	Caerus Oil & Gas	TVD Reference:	30' KB @ 8994.0usft
Project:	Garfield County, CO (UTM 12N)	MD Reference:	30' KB @ 8994.0usft
Site:	S26-T7S-R95W (26K)	North Reference:	True
Well:	BATTLEMENT MESA 11A-35 795	Survey Calculation Method:	Minimum Curvature
Wellbore:	OH		
Design:	PLAN #1		

Project	Garfield County, CO (UTM 12N)		
Map System:	Universal Transverse Mercator (US Survey Feet)	System Datum:	Mean Sea Level
Geo Datum:	NAD 1927 - Western US		
Map Zone:	Zone 12N (114 W to 108 W)		

Site	S26-T7S-R95W (26K)				
Site Position:		Northing:	14,324,088.50 usft	Latitude:	39.405864
From:	Map	Easting:	2,496,462.30 usft	Longitude:	-107.969708
Position Uncertainty:	0.0 usft	Slot Radius:	13-3/16"	Grid Convergence:	1.92 °

Well	BATTLEMENT MESA 11A-35 795					
Well Position	+N/-S	0.0 usft	Northing:	14,323,644.40 usft	Latitude:	39.404566
	+E/-W	0.0 usft	Easting:	2,497,332.00 usft	Longitude:	-107.966686
Position Uncertainty		0.0 usft	Wellhead Elevation:	0.0 usft	Ground Level:	8,964.0 usft

Wellbore	OH				
Magnetics	Model Name	Sample Date	Declination (°)	Dip Angle (°)	Field Strength (nT)
	HDGM	11/12/2015	9.45	65.63	51,901

Design	PLAN #1			
Audit Notes:				
Version:	Phase:	PLAN	Tie On Depth:	0.0
Vertical Section:	Depth From (TVD) (usft)	+N/-S (usft)	+E/-W (usft)	Direction (°)
	0.0	0.0	0.0	221.97

Plan Sections										
Measured Depth (usft)	Inclination (°)	Azimuth (°)	Vertical Depth (usft)	+N/-S (usft)	+E/-W (usft)	Dogleg Rate (°/100usft)	Build Rate (°/100usft)	Turn Rate (°/100usft)	TFO (°)	Target
0.0	0.00	0.00	0.0	0.0	0.0	0.00	0.00	0.00	0.00	
200.0	0.00	0.00	200.0	0.0	0.0	0.00	0.00	0.00	0.00	
715.4	15.46	221.97	709.1	-51.4	-46.2	3.00	3.00	0.00	221.97	
7,531.8	15.46	221.97	7,278.9	-1,402.4	-1,261.4	0.00	0.00	0.00	0.00	
8,047.1	0.00	0.00	7,788.0	-1,453.8	-1,307.6	3.00	-3.00	0.00	180.00	
10,154.1	0.00	0.00	9,895.0	-1,453.8	-1,307.6	0.00	0.00	0.00	0.00	BM 11A-35 795 PBHL

Planning Report

Database:	USA EDM 5000 Multi Users DB	Local Co-ordinate Reference:	Well BATTLEMENT MESA 11A-35 795
Company:	Caerus Oil & Gas	TVD Reference:	30' KB @ 8994.0usft
Project:	Garfield County, CO (UTM 12N)	MD Reference:	30' KB @ 8994.0usft
Site:	S26-T7S-R95W (26K)	North Reference:	True
Well:	BATTLEMENT MESA 11A-35 795	Survey Calculation Method:	Minimum Curvature
Wellbore:	OH		
Design:	PLAN #1		

Planned Survey									
Measured Depth (usft)	Inclination (°)	Azimuth (°)	Vertical Depth (usft)	+N/-S (usft)	+E/-W (usft)	Vertical Section (usft)	Dogleg Rate (°/100usft)	Build Rate (°/100u)	Comments / Formations
0.0	0.00	0.00	0.0	0.0	0.0	0.0	0.00	0.00	
100.0	0.00	0.00	100.0	0.0	0.0	0.0	0.00	0.00	
200.0	0.00	0.00	200.0	0.0	0.0	0.0	0.00	0.00	Start Build 3.00
300.0	3.00	221.97	300.0	-1.9	-1.8	2.6	3.00	3.00	
400.0	6.00	221.97	399.6	-7.8	-7.0	10.5	3.00	3.00	
500.0	9.00	221.97	498.8	-17.5	-15.7	23.5	3.00	3.00	
600.0	12.00	221.97	597.1	-31.0	-27.9	41.7	3.00	3.00	
700.0	15.00	221.97	694.3	-48.4	-43.5	65.1	3.00	3.00	
715.4	15.46	221.97	709.1	-51.4	-46.2	69.1	3.00	3.00	Start 6816.4 hold at 715.4 MD
800.0	15.46	221.97	790.7	-68.2	-61.3	91.7	0.00	0.00	
900.0	15.46	221.97	887.1	-88.0	-79.1	118.3	0.00	0.00	
1,000.0	15.46	221.97	983.5	-107.8	-97.0	145.0	0.00	0.00	
1,100.0	15.46	221.97	1,079.8	-127.6	-114.8	171.6	0.00	0.00	
1,200.0	15.46	221.97	1,176.2	-147.4	-132.6	198.3	0.00	0.00	
1,300.0	15.46	221.97	1,272.6	-167.3	-150.4	225.0	0.00	0.00	
1,400.0	15.46	221.97	1,369.0	-187.1	-168.3	251.6	0.00	0.00	
1,500.0	15.46	221.97	1,465.4	-206.9	-186.1	278.3	0.00	0.00	
1,600.0	15.46	221.97	1,561.8	-226.7	-203.9	304.9	0.00	0.00	
1,700.0	15.46	221.97	1,658.1	-246.5	-221.8	331.6	0.00	0.00	
1,800.0	15.46	221.97	1,754.5	-266.4	-239.6	358.3	0.00	0.00	
1,900.0	15.46	221.97	1,850.9	-286.2	-257.4	384.9	0.00	0.00	
2,000.0	15.46	221.97	1,947.3	-306.0	-275.2	411.6	0.00	0.00	
2,100.0	15.46	221.97	2,043.7	-325.8	-293.1	438.2	0.00	0.00	
2,200.0	15.46	221.97	2,140.0	-345.6	-310.9	464.9	0.00	0.00	
2,300.0	15.46	221.97	2,236.4	-365.5	-328.7	491.5	0.00	0.00	
2,400.0	15.46	221.97	2,332.8	-385.3	-346.5	518.2	0.00	0.00	
2,500.0	15.46	221.97	2,429.2	-405.1	-364.4	544.9	0.00	0.00	
2,600.0	15.46	221.97	2,525.6	-424.9	-382.2	571.5	0.00	0.00	
2,700.0	15.46	221.97	2,622.0	-444.7	-400.0	598.2	0.00	0.00	
2,800.0	15.46	221.97	2,718.3	-464.6	-417.9	624.8	0.00	0.00	
2,900.0	15.46	221.97	2,814.7	-484.4	-435.7	651.5	0.00	0.00	
3,000.0	15.46	221.97	2,911.1	-504.2	-453.5	678.1	0.00	0.00	
3,100.0	15.46	221.97	3,007.5	-524.0	-471.3	704.8	0.00	0.00	
3,200.0	15.46	221.97	3,103.9	-543.8	-489.2	731.5	0.00	0.00	
3,300.0	15.46	221.97	3,200.2	-563.7	-507.0	758.1	0.00	0.00	
3,400.0	15.46	221.97	3,296.6	-583.5	-524.8	784.8	0.00	0.00	
3,500.0	15.46	221.97	3,393.0	-603.3	-542.6	811.4	0.00	0.00	
3,600.0	15.46	221.97	3,489.4	-623.1	-560.5	838.1	0.00	0.00	
3,700.0	15.46	221.97	3,585.8	-642.9	-578.3	864.7	0.00	0.00	
3,800.0	15.46	221.97	3,682.1	-662.8	-596.1	891.4	0.00	0.00	
3,900.0	15.46	221.97	3,778.5	-682.6	-614.0	918.1	0.00	0.00	
4,000.0	15.46	221.97	3,874.9	-702.4	-631.8	944.7	0.00	0.00	
4,100.0	15.46	221.97	3,971.3	-722.2	-649.6	971.4	0.00	0.00	
4,200.0	15.46	221.97	4,067.7	-742.0	-667.4	998.0	0.00	0.00	
4,300.0	15.46	221.97	4,164.1	-761.8	-685.3	1,024.7	0.00	0.00	
4,400.0	15.46	221.97	4,260.4	-781.7	-703.1	1,051.4	0.00	0.00	
4,500.0	15.46	221.97	4,356.8	-801.5	-720.9	1,078.0	0.00	0.00	
4,600.0	15.46	221.97	4,453.2	-821.3	-738.7	1,104.7	0.00	0.00	
4,700.0	15.46	221.97	4,549.6	-841.1	-756.6	1,131.3	0.00	0.00	
4,800.0	15.46	221.97	4,646.0	-860.9	-774.4	1,158.0	0.00	0.00	
4,900.0	15.46	221.97	4,742.3	-880.8	-792.2	1,184.6	0.00	0.00	
5,000.0	15.46	221.97	4,838.7	-900.6	-810.1	1,211.3	0.00	0.00	

Planning Report

Database:	USA EDM 5000 Multi Users DB	Local Co-ordinate Reference:	Well BATTLEMENT MESA 11A-35 795
Company:	Caerus Oil & Gas	TVD Reference:	30' KB @ 8994.0usft
Project:	Garfield County, CO (UTM 12N)	MD Reference:	30' KB @ 8994.0usft
Site:	S26-T7S-R95W (26K)	North Reference:	True
Well:	BATTLEMENT MESA 11A-35 795	Survey Calculation Method:	Minimum Curvature
Wellbore:	OH		
Design:	PLAN #1		

Planned Survey									
Measured Depth (usft)	Inclination (°)	Azimuth (°)	Vertical Depth (usft)	+N/-S (usft)	+E/-W (usft)	Vertical Section (usft)	Dogleg Rate (°/100usft)	Build Rate (°/100u)	Comments / Formations
5,100.0	15.46	221.97	4,935.1	-920.4	-827.9	1,238.0	0.00	0.00	
5,200.0	15.46	221.97	5,031.5	-940.2	-845.7	1,264.6	0.00	0.00	
5,300.0	15.46	221.97	5,127.9	-960.0	-863.5	1,291.3	0.00	0.00	
5,400.0	15.46	221.97	5,224.2	-979.9	-881.4	1,317.9	0.00	0.00	
5,500.0	15.46	221.97	5,320.6	-999.7	-899.2	1,344.6	0.00	0.00	
5,600.0	15.46	221.97	5,417.0	-1,019.5	-917.0	1,371.2	0.00	0.00	
5,700.0	15.46	221.97	5,513.4	-1,039.3	-934.8	1,397.9	0.00	0.00	
5,800.0	15.46	221.97	5,609.8	-1,059.1	-952.7	1,424.6	0.00	0.00	
5,900.0	15.46	221.97	5,706.2	-1,079.0	-970.5	1,451.2	0.00	0.00	
6,000.0	15.46	221.97	5,802.5	-1,098.8	-988.3	1,477.9	0.00	0.00	
6,100.0	15.46	221.97	5,898.9	-1,118.6	-1,006.2	1,504.5	0.00	0.00	
6,200.0	15.46	221.97	5,995.3	-1,138.4	-1,024.0	1,531.2	0.00	0.00	
6,300.0	15.46	221.97	6,091.7	-1,158.2	-1,041.8	1,557.8	0.00	0.00	
6,400.0	15.46	221.97	6,188.1	-1,178.1	-1,059.6	1,584.5	0.00	0.00	
6,500.0	15.46	221.97	6,284.4	-1,197.9	-1,077.5	1,611.2	0.00	0.00	
6,600.0	15.46	221.97	6,380.8	-1,217.7	-1,095.3	1,637.8	0.00	0.00	
6,700.0	15.46	221.97	6,477.2	-1,237.5	-1,113.1	1,664.5	0.00	0.00	
6,800.0	15.46	221.97	6,573.6	-1,257.3	-1,130.9	1,691.1	0.00	0.00	
6,900.0	15.46	221.97	6,670.0	-1,277.2	-1,148.8	1,717.8	0.00	0.00	
7,000.0	15.46	221.97	6,766.4	-1,297.0	-1,166.6	1,744.5	0.00	0.00	
7,100.0	15.46	221.97	6,862.7	-1,316.8	-1,184.4	1,771.1	0.00	0.00	
7,105.5	15.46	221.97	6,868.0	-1,317.9	-1,185.4	1,772.6	0.00	0.00	OHIO_CREEK.MBL (SSTVD)
7,200.0	15.46	221.97	6,959.1	-1,336.6	-1,202.3	1,797.8	0.00	0.00	
7,300.0	15.46	221.97	7,055.5	-1,356.4	-1,220.1	1,824.4	0.00	0.00	
7,400.0	15.46	221.97	7,151.9	-1,376.3	-1,237.9	1,851.1	0.00	0.00	
7,455.1	15.46	221.97	7,205.0	-1,387.2	-1,247.7	1,865.8	0.00	0.00	WILLIAMS_FORK.MBL (SSTVD)
7,500.0	15.46	221.97	7,248.3	-1,396.1	-1,255.7	1,877.7	0.00	0.00	
7,531.8	15.46	221.97	7,278.9	-1,402.4	-1,261.4	1,886.2	0.00	0.00	Start Drop -3.00
7,600.0	13.41	221.97	7,344.9	-1,415.0	-1,272.8	1,903.2	3.00	-3.00	
7,700.0	10.41	221.97	7,442.8	-1,430.4	-1,286.6	1,923.9	3.00	-3.00	
7,800.0	7.41	221.97	7,541.6	-1,441.9	-1,296.9	1,939.4	3.00	-3.00	
7,900.0	4.41	221.97	7,641.0	-1,449.5	-1,303.8	1,949.7	3.00	-3.00	
8,000.0	1.41	221.97	7,740.9	-1,453.3	-1,307.2	1,954.7	3.00	-3.00	
8,047.1	0.00	0.00	7,788.0	-1,453.8	-1,307.6	1,955.3	3.00	-3.00	Start 2107.0 hold at 8047.1 MD
8,100.0	0.00	0.00	7,840.9	-1,453.8	-1,307.6	1,955.3	0.00	0.00	
8,147.1	0.00	0.00	7,888.0	-1,453.8	-1,307.6	1,955.3	0.00	0.00	TOP_GAS.MBL (SSTVD)
8,200.0	0.00	0.00	7,940.9	-1,453.8	-1,307.6	1,955.3	0.00	0.00	
8,300.0	0.00	0.00	8,040.9	-1,453.8	-1,307.6	1,955.3	0.00	0.00	
8,400.0	0.00	0.00	8,140.9	-1,453.8	-1,307.6	1,955.3	0.00	0.00	
8,500.0	0.00	0.00	8,240.9	-1,453.8	-1,307.6	1,955.3	0.00	0.00	
8,600.0	0.00	0.00	8,340.9	-1,453.8	-1,307.6	1,955.3	0.00	0.00	
8,700.0	0.00	0.00	8,440.9	-1,453.8	-1,307.6	1,955.3	0.00	0.00	
8,800.0	0.00	0.00	8,540.9	-1,453.8	-1,307.6	1,955.3	0.00	0.00	
8,900.0	0.00	0.00	8,640.9	-1,453.8	-1,307.6	1,955.3	0.00	0.00	
9,000.0	0.00	0.00	8,740.9	-1,453.8	-1,307.6	1,955.3	0.00	0.00	
9,100.0	0.00	0.00	8,840.9	-1,453.8	-1,307.6	1,955.3	0.00	0.00	
9,200.0	0.00	0.00	8,940.9	-1,453.8	-1,307.6	1,955.3	0.00	0.00	
9,300.0	0.00	0.00	9,040.9	-1,453.8	-1,307.6	1,955.3	0.00	0.00	
9,400.0	0.00	0.00	9,140.9	-1,453.8	-1,307.6	1,955.3	0.00	0.00	
9,479.1	0.00	0.00	9,220.0	-1,453.8	-1,307.6	1,955.3	0.00	0.00	CAMEO.MBL (SSTVD)
9,500.0	0.00	0.00	9,240.9	-1,453.8	-1,307.6	1,955.3	0.00	0.00	
9,600.0	0.00	0.00	9,340.9	-1,453.8	-1,307.6	1,955.3	0.00	0.00	

Planning Report

Database: USA EDM 5000 Multi Users DB	Local Co-ordinate Reference: Well BATTLEMENT MESA 11A-35 795
Company: Caerus Oil & Gas	TVD Reference: 30' KB @ 8994.0usft
Project: Garfield County, CO (UTM 12N)	MD Reference: 30' KB @ 8994.0usft
Site: S26-T7S-R95W (26K)	North Reference: True
Well: BATTLEMENT MESA 11A-35 795	Survey Calculation Method: Minimum Curvature
Wellbore: OH	
Design: PLAN #1	

Planned Survey									
Measured Depth (usft)	Inclination (°)	Azimuth (°)	Vertical Depth (usft)	+N/-S (usft)	+E/-W (usft)	Vertical Section (usft)	Dogleg Rate (°/100usft)	Build Rate (°/100u)	Comments / Formations
9,700.0	0.00	0.00	9,440.9	-1,453.8	-1,307.6	1,955.3	0.00	0.00	
9,800.0	0.00	0.00	9,540.9	-1,453.8	-1,307.6	1,955.3	0.00	0.00	
9,900.0	0.00	0.00	9,640.9	-1,453.8	-1,307.6	1,955.3	0.00	0.00	
10,000.0	0.00	0.00	9,740.9	-1,453.8	-1,307.6	1,955.3	0.00	0.00	
10,004.1	0.00	0.00	9,745.0	-1,453.8	-1,307.6	1,955.3	0.00	0.00	ROLLINS.MBL (SSTVD)
10,100.0	0.00	0.00	9,840.9	-1,453.8	-1,307.6	1,955.3	0.00	0.00	
10,154.1	0.00	0.00	9,895.0	-1,453.8	-1,307.6	1,955.3	0.00	0.00	TD at 10154.1 - BM 11A-35 795 PBHL

Targets									
Target Name	Dip Angle (°)	Dip Dir. (°)	TVD (usft)	+N/-S (usft)	+E/-W (usft)	Northing (usft)	Easting (usft)	Latitude	Longitude
BM 11A-35 795 PBHL - hit/miss target - Shape - plan hits target center - Circle (radius 50.0)	0.00	0.00	9,895.0	-1,453.8	-1,307.6	14,322,147.50	2,496,074.00	39.400576	-107.971311

Formations					
Measured Depth (usft)	Vertical Depth (usft)	Name	Lithology	Dip (°)	Dip Direction (°)
7,105.5	6,868.0	OHIO_CREEK.MBL (SSTVD)		0.00	
7,455.1	7,205.0	WILLIAMS_FORK.MBL (SSTVD)		0.00	
8,147.1	7,888.0	TOP_GAS.MBL (SSTVD)		0.00	
9,479.1	9,220.0	CAMEO.MBL (SSTVD)		0.00	
10,004.1	9,745.0	ROLLINS.MBL (SSTVD)		0.00	

Plan Annotations				
Measured Depth (usft)	Vertical Depth (usft)	Local Coordinates		Comment
		+N/-S (usft)	+E/-W (usft)	
200.0	200.0	0.0	0.0	Start Build 3.00
715.4	709.1	-51.4	-46.2	Start 6816.4 hold at 715.4 MD
7,531.8	7,278.9	-1,402.4	-1,261.4	Start Drop -3.00
8,047.1	7,788.0	-1,453.8	-1,307.6	Start 2107.0 hold at 8047.1 MD
10,154.1	9,895.0	-1,453.8	-1,307.6	TD at 10154.1