

MULTI-WELL PLAN - SHARP 26-1-1HN WELL PAD

SECTION: 24
TOWNSHIP: 1S
RANGE: 67W

NOTES:

- 1) BEARINGS FOR THIS MAP ARE ASSUMED AND BASED UPON GPS OBSERVATIONS MADE BETWEEN MONUMENTS LOCATED AT THE SOUTHWEST CORNER AND SOUTH QUARTER CORNER OF SECTION 24, T.1S., R.67W.
- 2) HORIZONTAL DATUM IS NAD83.
- 3) VERTICAL DATUM IS NAVD88 AND ORIGINATES FROM THE LOCAL C.O.R.S. NETWORK, UTILIZING THE GEOID12A MODEL.

SURFACE HOLE WELL ORDER
WEST TO EAST

NORTH ROW

SHARP 23-3-1HC
SHARP 24-3-12HN
SHARP 24-3-10HN
SHARP 24-3-9HC

SOUTH ROW

SHARP 24-3-11H (EX).
SHARP 26-1-1HN
SHARP 25-1-12HC
SHARP 25-1-11HN
SHARP 25-1-10HC
SHARP 25-1-9HN

DIRECTIONAL LINE DATA
FROM SHL-LP FROM LP-BHL

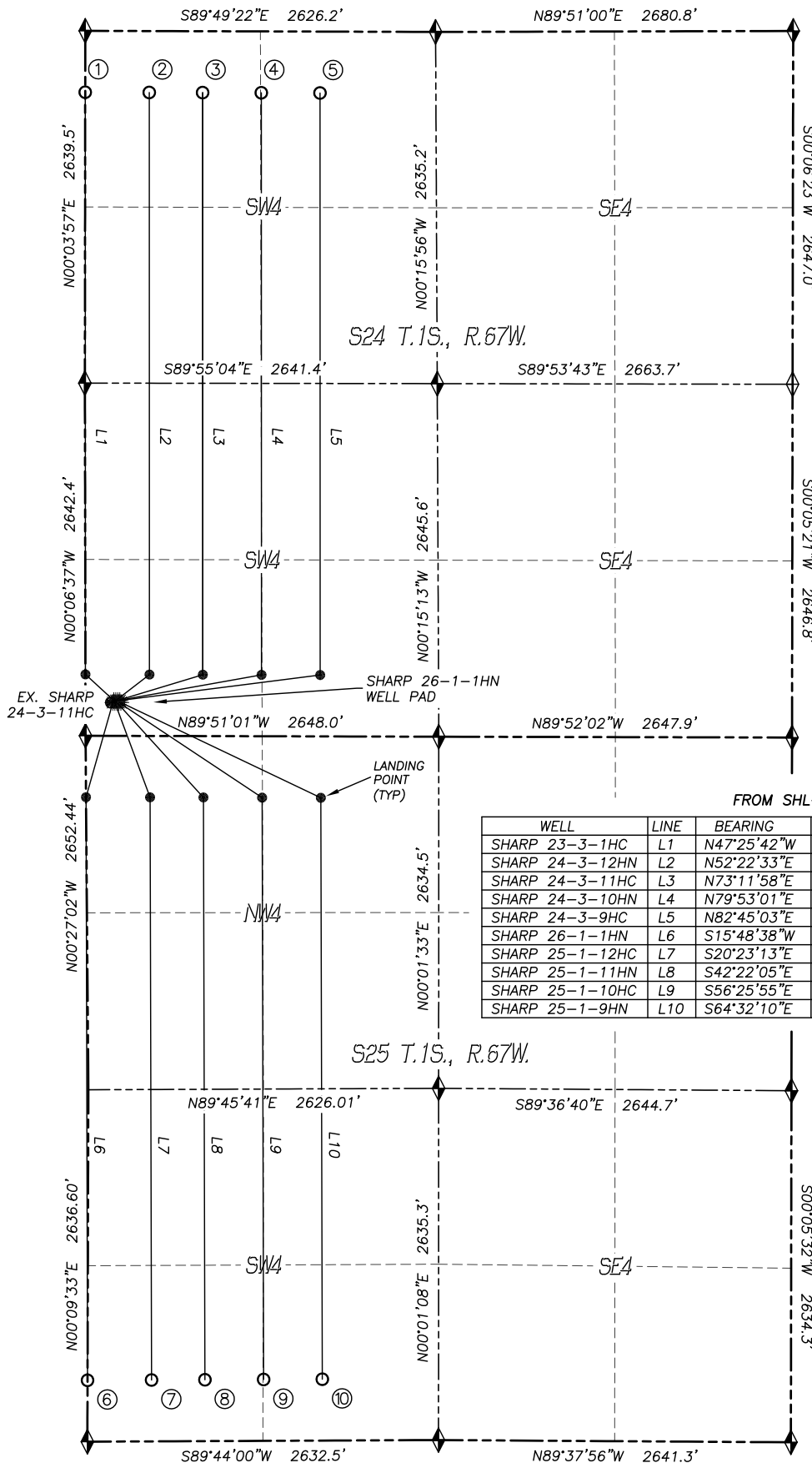
WELL	LINE	BEARING	DISTANCE	BEARING	DISTANCE
SHARP 23-3-1HC	L1	N47°25'42"W	289.1'	N00°01'20"W	4361.9'
SHARP 24-3-12HN	L2	N52°22'33"E	318.3'	N00°01'20"W	4361.6'
SHARP 24-3-11HC	L3	N73°11'58"E	720.3'	N00°01'21"W	4361.4'
SHARP 24-3-10HN	L4	N79°53'01"E	1094.1'	N00°01'21"W	4361.2'
SHARP 24-3-9HC	L5	N82°45'03"E	1514.2'	N00°01'21"W	4361.0'
SHARP 26-1-1HN	L6	S15°48'38"W	737.4'	S00°08'48"E	4369.0'
SHARP 25-1-12HC	L7	S20°23'13"E	758.2'	S00°08'48"E	4365.4'
SHARP 25-1-11HN	L8	S42°22'05"E	963.3'	S00°08'48"E	4362.6'
SHARP 25-1-10HC	L9	S56°25'55"E	1289.2'	S00°08'47"E	4359.4'
SHARP 25-1-9HN	L10	S64°32'10"E	1660.5'	S00°08'47"E	4356.2'

LEGEND

- FOUND MONUMENT AS DESCRIBED
 PROPOSED WELL
 EXISTING WELL
 BOTTOM HOLE
 ABANDONED WELL
 CALCULATED POSITION



0 600 1200
SCALE: 1" = 1200'



DALEY LAND SURVEYING, INC. PARKER, CO. 80134 303 953 9841

MULTI-WELL PLAN – SHARP 26-1-1HN WELL PAD

SECTION: 24
TOWNSHIP: 1S
RANGE: 67W

Bottom Hole Data						
BHL No.	Well Name	Latitude	Longitude	Footage		STR
1	Sharp 23-3-1HC	N39.95658°	W104.84673°	460' FNL	0' FWL	24-1S-67W
2	Sharp 24-3-12HN	N39.95658°	W104.84502°	460' FNL	480' FWL	24-1S-67W
3	Sharp 24-3-11HC	N39.95657°	W104.84359°	460' FNL	880' FWL	24-1S-67W
4	Sharp 24-3-10HN	N39.95657°	W104.84202°	460' FNL	1320' FWL	24-1S-67W
5	Sharp 24-3-9HC	N39.95656°	W104.84045°	460' FNL	1760' FWL	24-1S-67W
6	Sharp 26-1-1HN	N39.93009°	W104.84667°	460' FSL	0' FWL	25-1S-67W
7	Sharp 25-1-12HC	N39.93010°	W104.84496°	460' FSL	480' FWL	25-1S-67W
8	Sharp 25-1-11HN	N39.93010°	W104.84353°	460' FSL	880' FWL	25-1S-67W
9	Sharp 25-1-10HC	N39.93011°	W104.84196°	460' FSL	1320' FWL	25-1S-67W
10	Sharp 25-1-9HN	N39.93012°	W104.84039°	460' FSL	1760' FWL	25-1S-67W