

# PIONEER



Pioneer Energy Services

## CEMENT BOND LOG WITH GAMMA RAY

Company Stelbar Oil Corporation, Inc.  
Well Axsom 1-25  
Field DeNova  
County Washington  
State Colorado

Company **Stelbar Oil Corporation, Inc.**  
Well **Axsom 1-25**  
Field **DeNova**  
County **Washington** State **Colorado**

Location: API # : 05-121-09281-00 Other Services  
SHL: 860' FSL x 660' FWL, SW/ 4 SW/4  
SEC 25 TWP 2S RGE 50W  
Permanent Datum Ground Level Elevation 4461'  
Log Measured From Kelly Bushing  
Drilling Measured From Kelly Bushing  
None  
K.B. 4467'  
D.F. 4466'  
G.L. 4461'

Date of Service

11-OCT-2015

Run Number

One

Depth Driller or PBTD

3124'

Depth Logger

2117'

Bottom Log Interval

2105'

Top Log Interval

Surface

Open Hole Size

N/A

Type Fluid

Water

Fluid Level

180'

Fluid Density

N/A

Max. Recorded Temperature

N/A

Max. Wellhead Pressure

0 PSI

Wellhead Connection

7 1/16 3K

Estimated Cement Top

N/A

Unit Number

P#1

Wireline Size

9/32

Location

Fort Morgan CO

Recorded By

Randy Azevedo

Witnessed By

Tyson Dilka

Size

Wt/Ft

Top

Bottom

Tubing Record

8 5/8"

Surface Casing

24#

Production Casing

4.5"

Liner Record

10.5#

Surface

Surface

3111'

253'

4461'

4466'

4467'

4461'

4466'

4467'

4461'

4466'

4467'

4461'

4466'

4467'

4461'

4466'

4467'

4461'

4466'

4467'

4461'

4466'

4467'

4461'

4466'

4467'

4461'

4466'

4467'

4461'

4466'

4467'

4461'

4466'

4467'

4461'

4466'

4467'

4461'

4466'

4467'

4461'

4466'

4467'

4461'

4466'

4467'

4461'

4466'

4467'

4461'

4466'

4467'

4461'

4466'

4467'

4461'

4466'

4467'

4461'

4466'

4467'

4461'

4466'

4467'

4461'

4466'

4467'

4461'

4466'

4467'

4461'

4466'

4467'

4461'

4466'

4467'

4461'

4466'

4467'

4461'

4466'

4467'

4461'

4466'

4467'

4461'

4466'

4467'

4461'

4466'

4467'

4461'

4466'

4467'

4461'

4466'

4467'

4461'

4466'

4467'

4461'

4466'

4467'

4461'

4466'

4467'

4461'

4466'

4467'

4461'

4466'

4467'

4461'

4466'

4467'

4461'

4466'

4467'

4461'

4466'

4467'

4461'

4466'

4467'

4461'

4466'

4467'

4461'

4466'

4467'

4461'

4466'

4467'

4461'

4466'

4467'

4461'

4466'

4467'

4461'

4466'

4467'

4461'

4466'

4467'

4461'

4466'

4467'

4461'

4466'

4467'

4461'

4466'

4467'

4461'

4466'

4467'

4461'

4466'

4467'

4461'

4466'

4467'

4461'

4466'

4467'

4461'

4466'

4467'

4461'

4466'

4467'

4461'

4466'

4467'

4461'

4466'

4467'

4461'

4466'

4467'

4461'

4466'

4467'

4461'

4466'

4467'

4461'

4466'

4467'

4461'

4466'

4467'

4461'

4466'

4467'

4461'

4466'

4467'

4461'

4466'

4467'

4461'

4466'

4467'

4461'

4466'

4467'

4461'

4466'

4467'

4461'

4466'

4467'

4461'

4466'

4467'

4461'

4466'

4467'

4461'

4466'

4467'

4461'

4466'

4467'

4461'

4466'

4467'

4461'

4466'

4467'

4461'

4466'

4467'

Sensor	Offset (ft)	Schematic	Description	Length (ft)	O.D. (in)	Weight (lb)
			CHD-STNDRD Standard Cable Head	1.00	1.69	10.00
			CENT-PTS275	2.83	2.75	
WVFS8	11.71		RBT-Probe (130434_7in) Probe Radii Bond Tool with Digital Telemetry	8.92	2.75	90.00
WVFS7	11.71					
WVFS6	11.71					
WVFS5	11.71					
WVFS4	11.71					
WVFS3	11.71					
WVFS2	11.71					
WVFS1	11.71					
WVFCAL	11.71					
WV3FT	11.71					
WV5FT	10.63					
HEADVOLT	7.38					
			CENT-PTS275	2.83	2.75	
CCL	3.63					
GR	2.30		GR_CCL-Probe (111211) Probe Gamma CCL	4.54	2.75	100.00

Dataset:
Total length:
Total weight:
O.D.:

stelbar\_axsom1-25\_cbl.db: field/well/run1/pass4
20.13 ft
200.00 lb
2.75 in

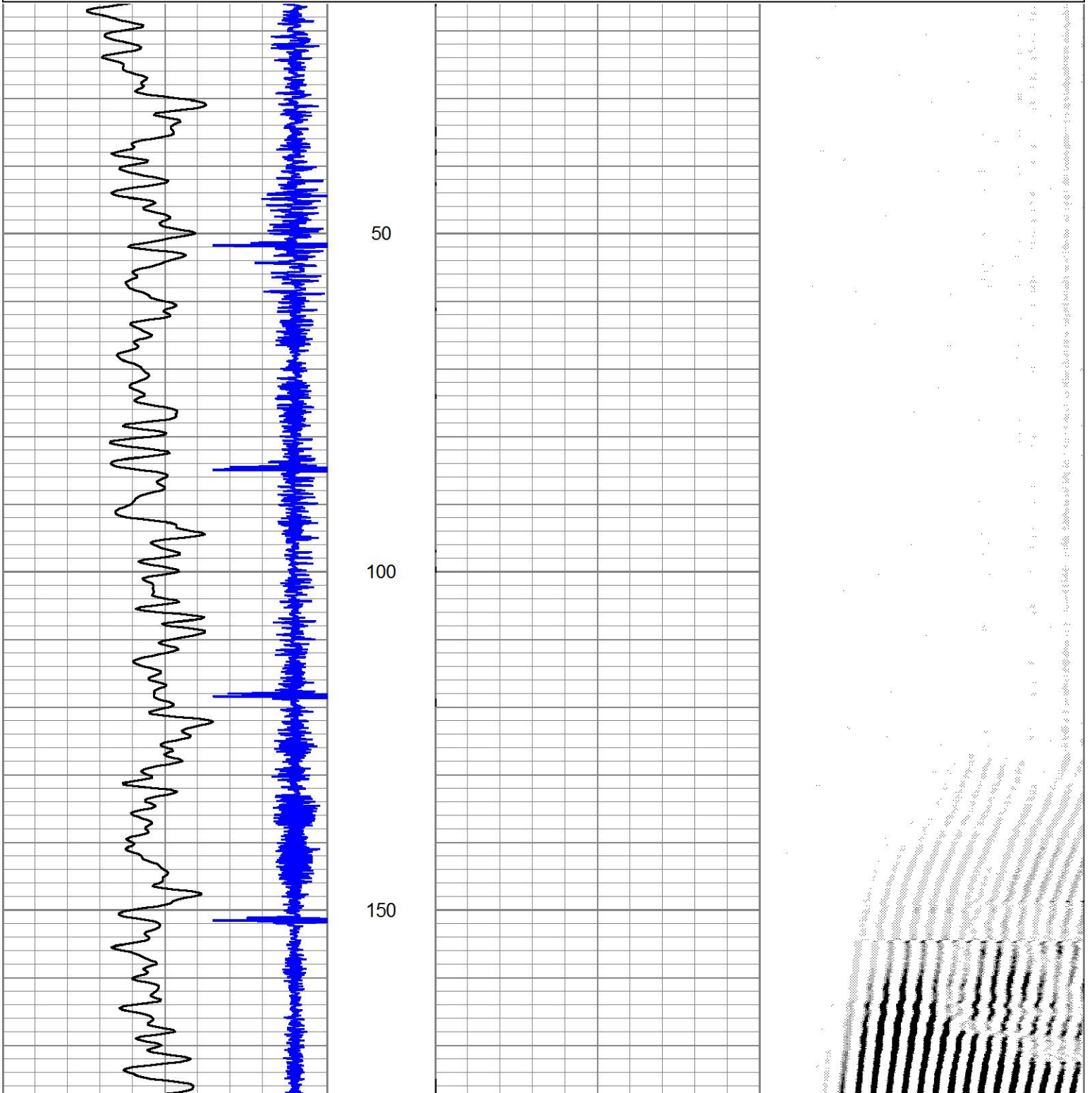
## 4.5 Main Fluid level

Log ran under 0 PSI surface induced pressure.

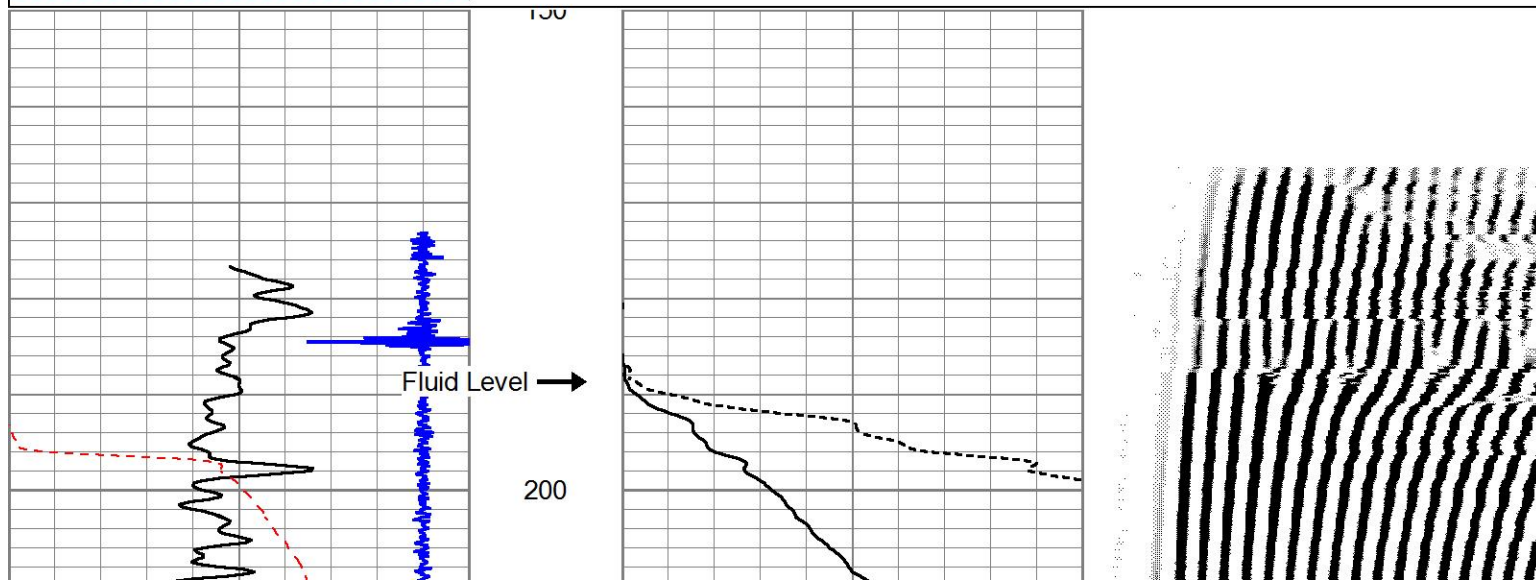
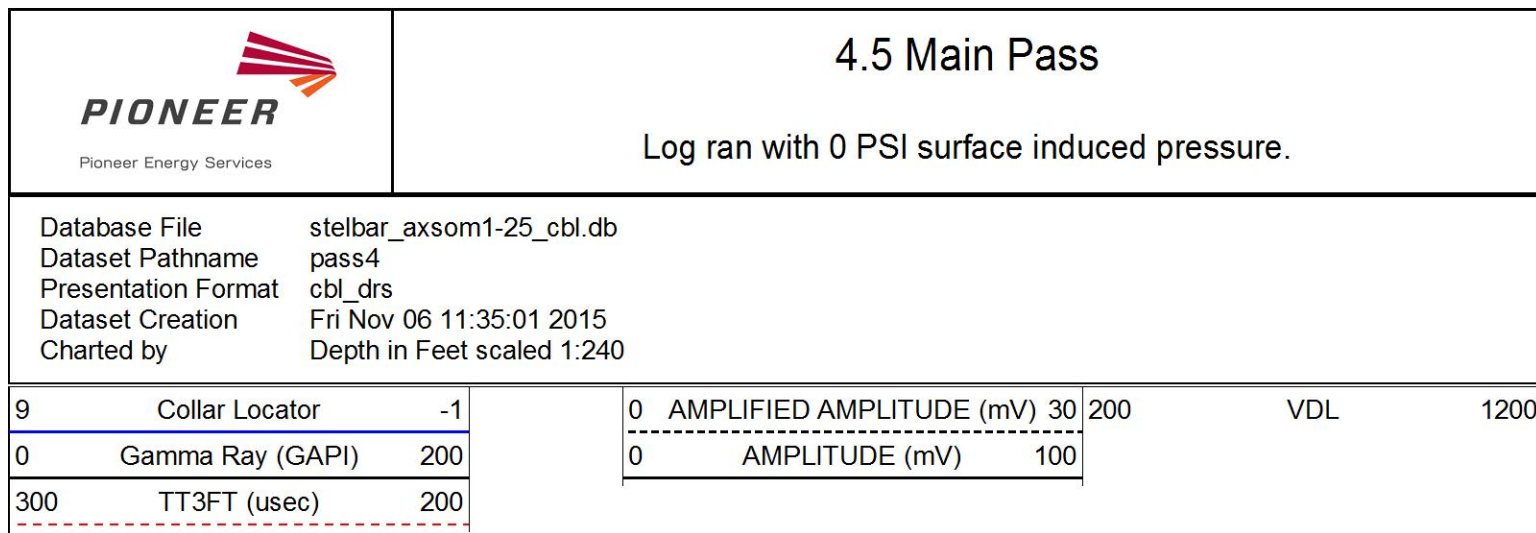
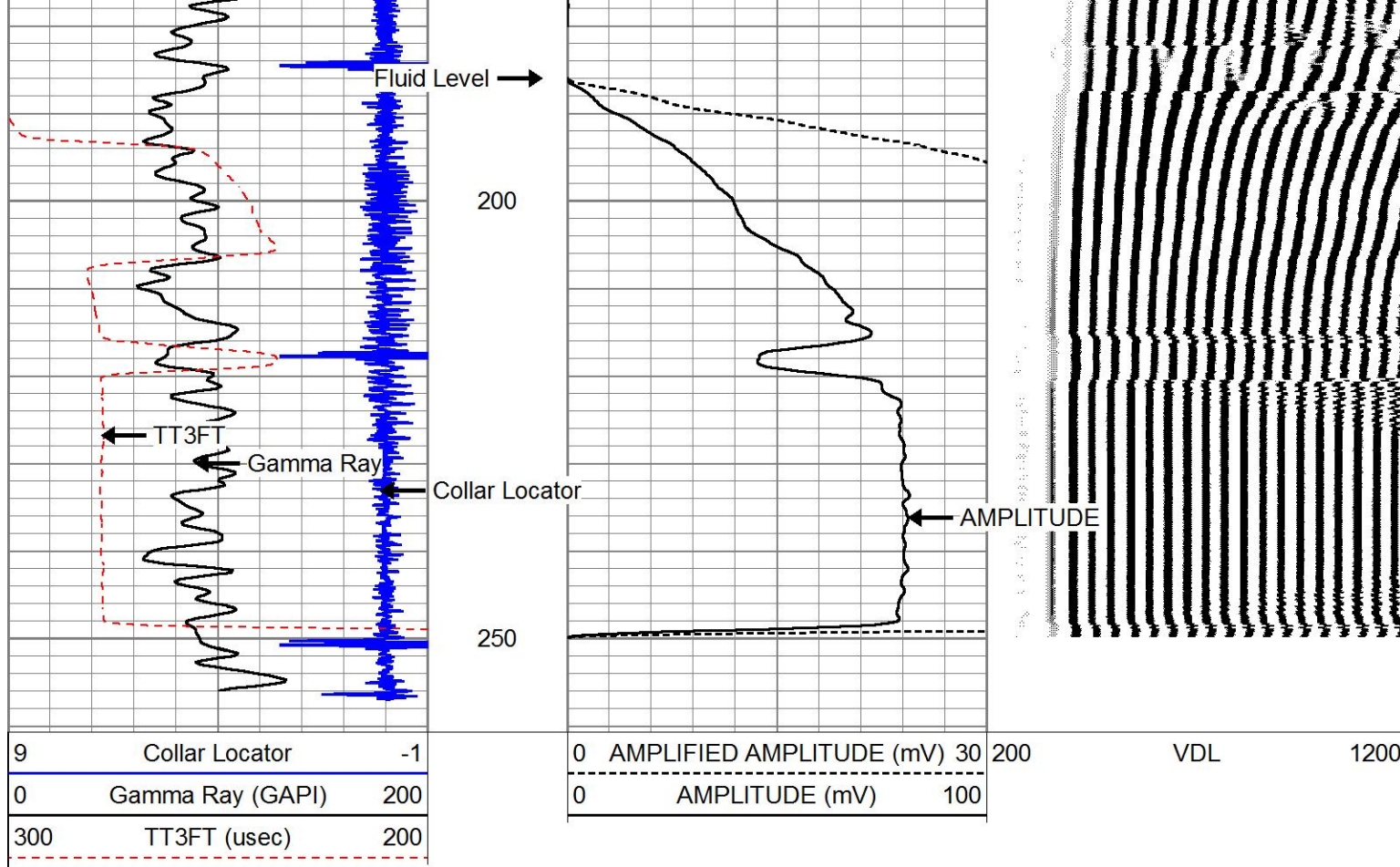
Database File      stelbar\_axsom1-25\_cbl.db  
Dataset Pathname    pass5  
Presentation Format    cbl\_drs  
Dataset Creation      Fri Nov 06 11:58:32 2015  
Charted by            Depth in Feet scaled 1:240

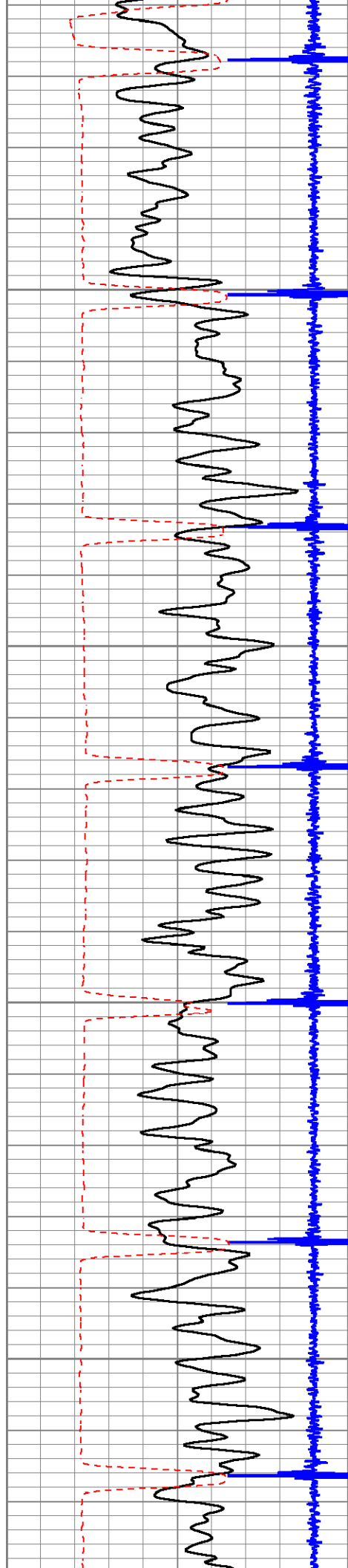
9	Collar Locator	-1
0	Gamma Ray (GAPI)	200
300	TT3FT (usec)	200

0	AMPLIFIED AMPLITUDE (mV)	30	200	VDL	1200
0	AMPLITUDE (mV)	100			







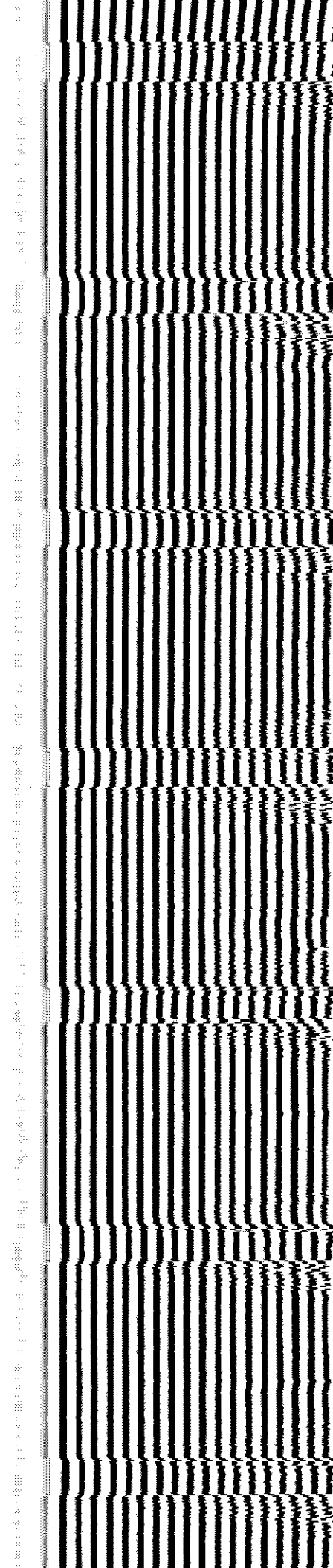
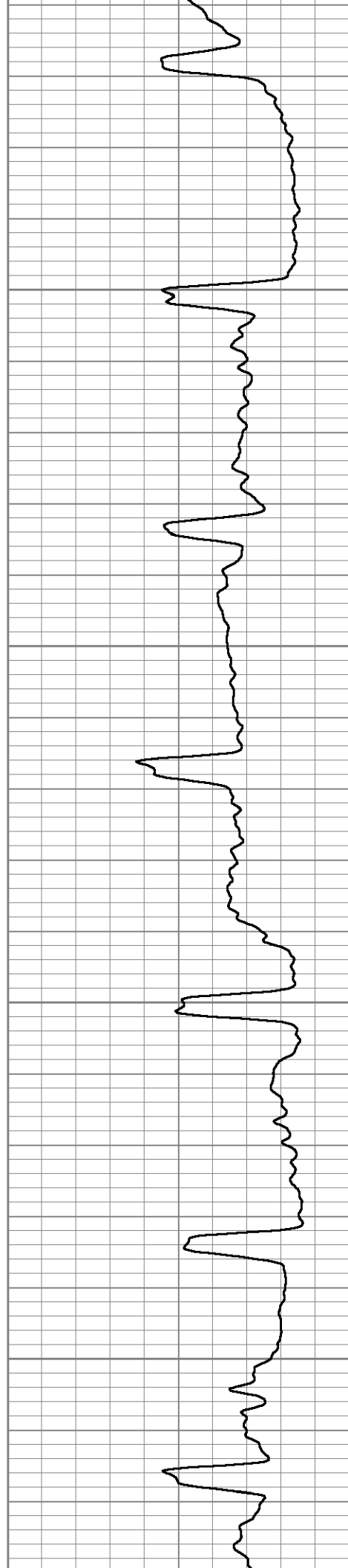


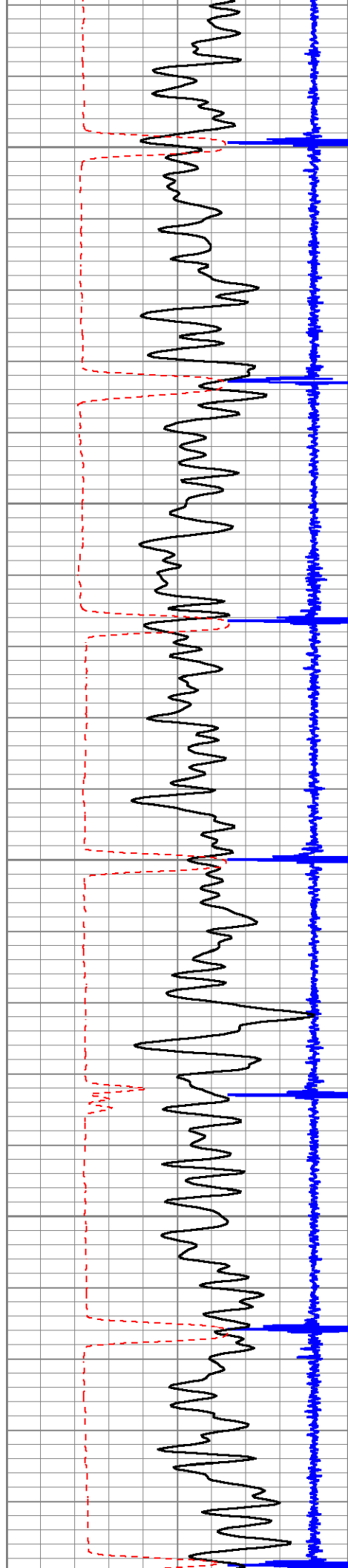
250

300

350

400





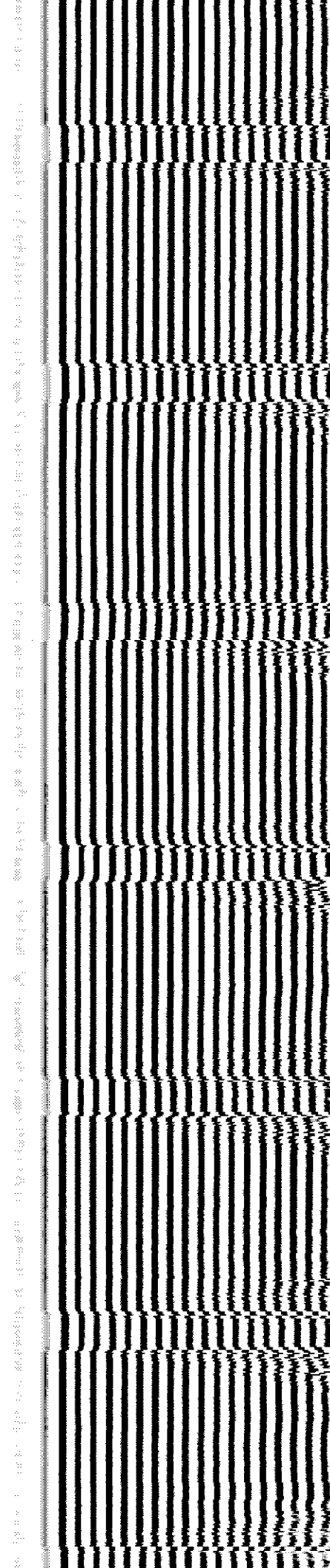
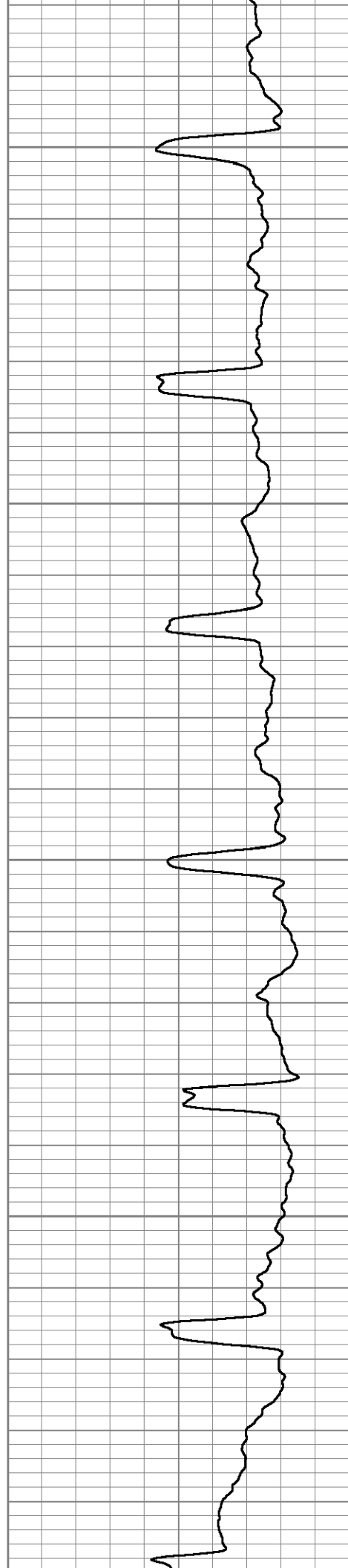
450

500

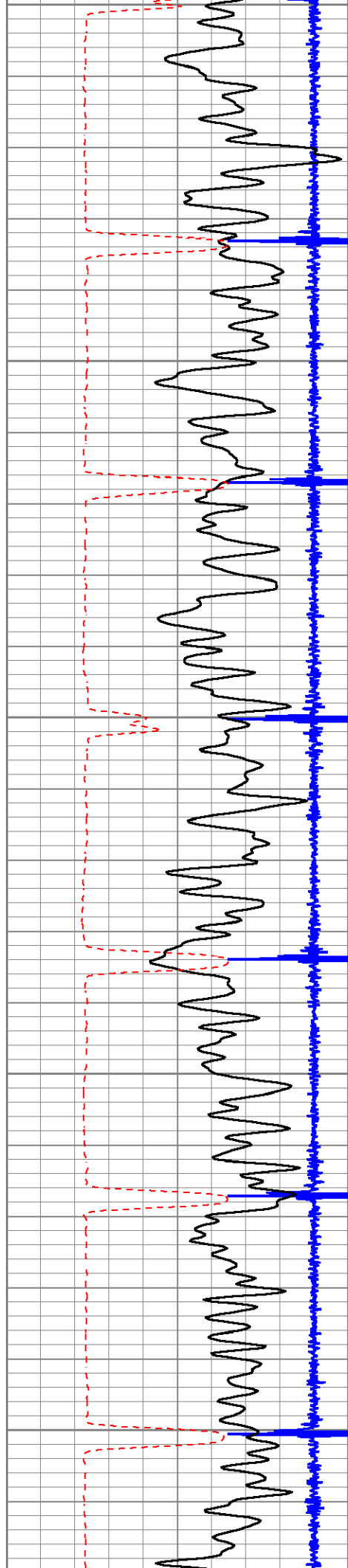
550

600

650







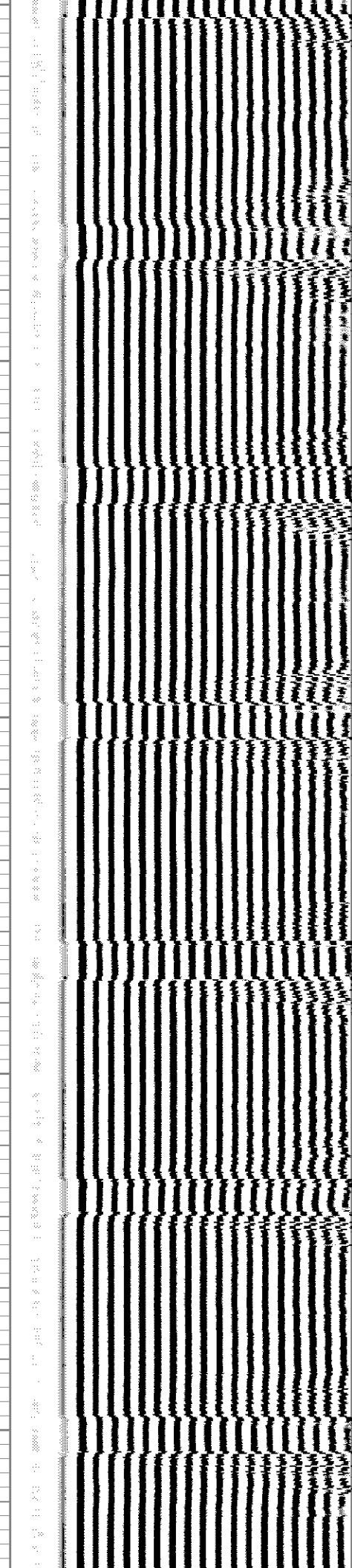
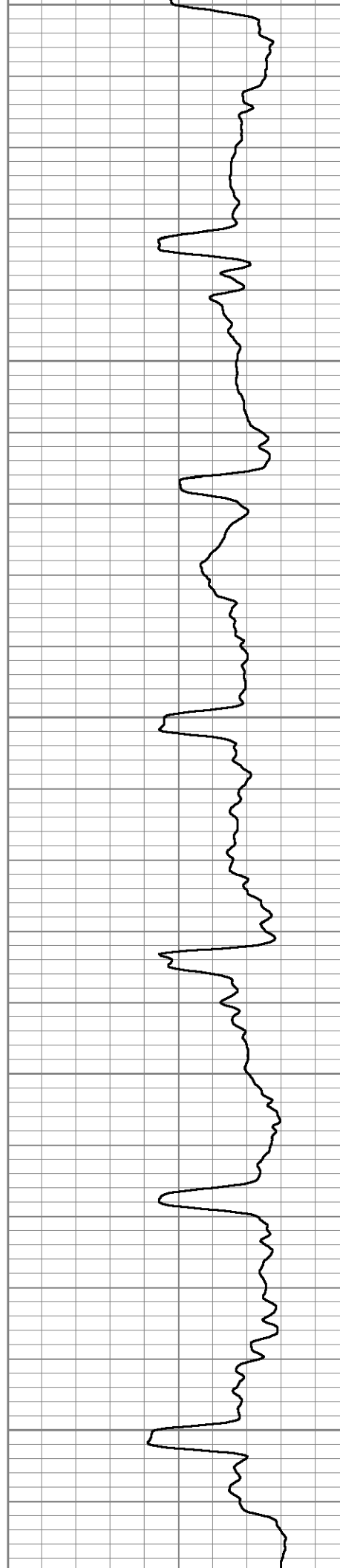
650

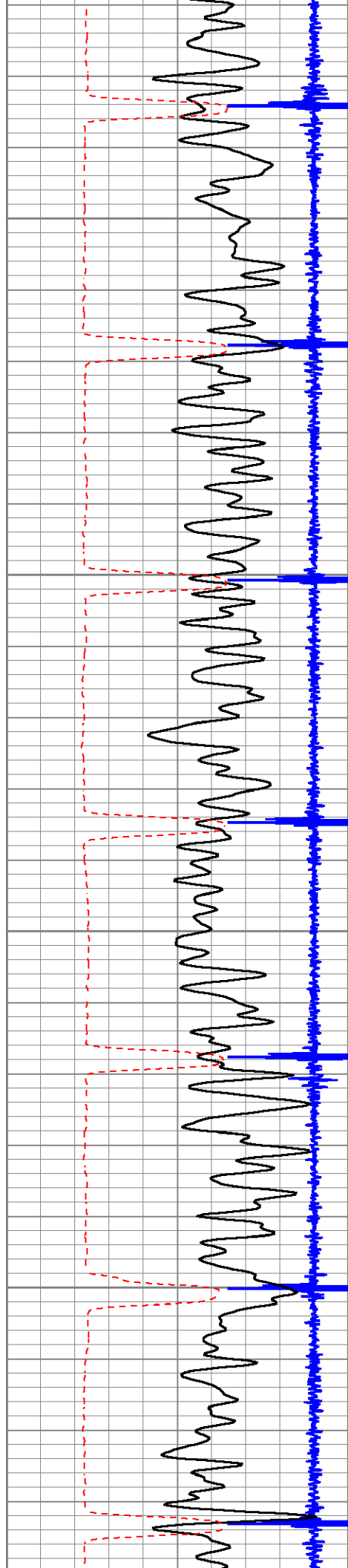
700

750

800

850



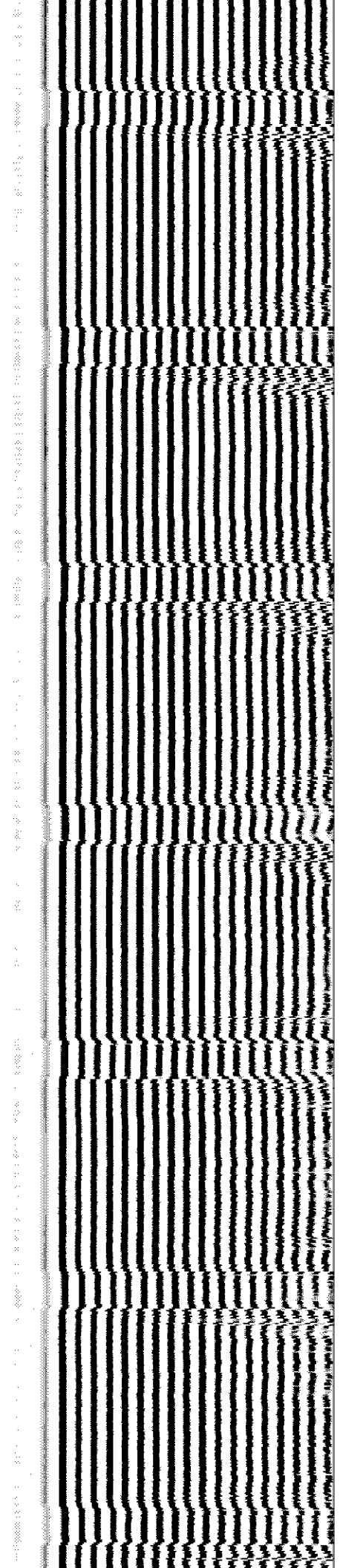
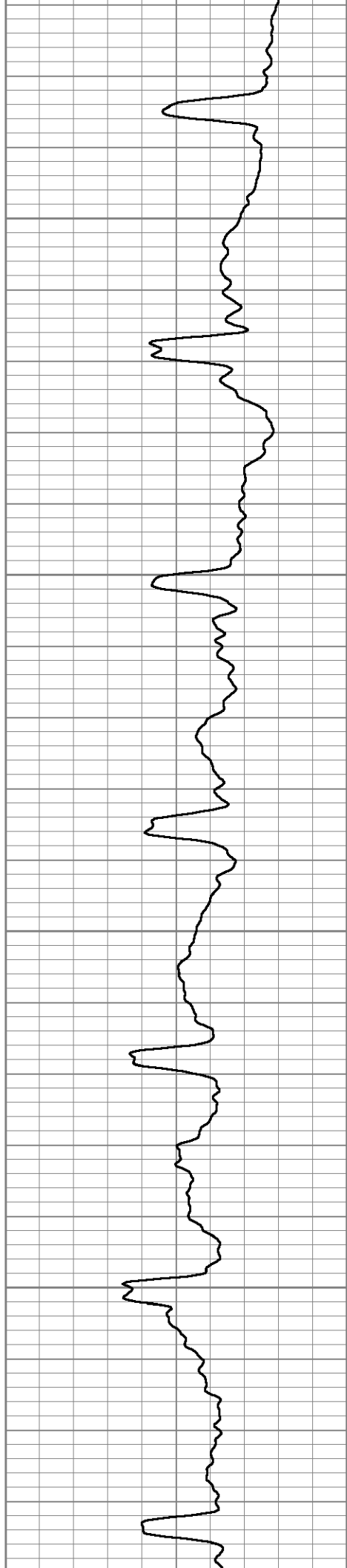


900

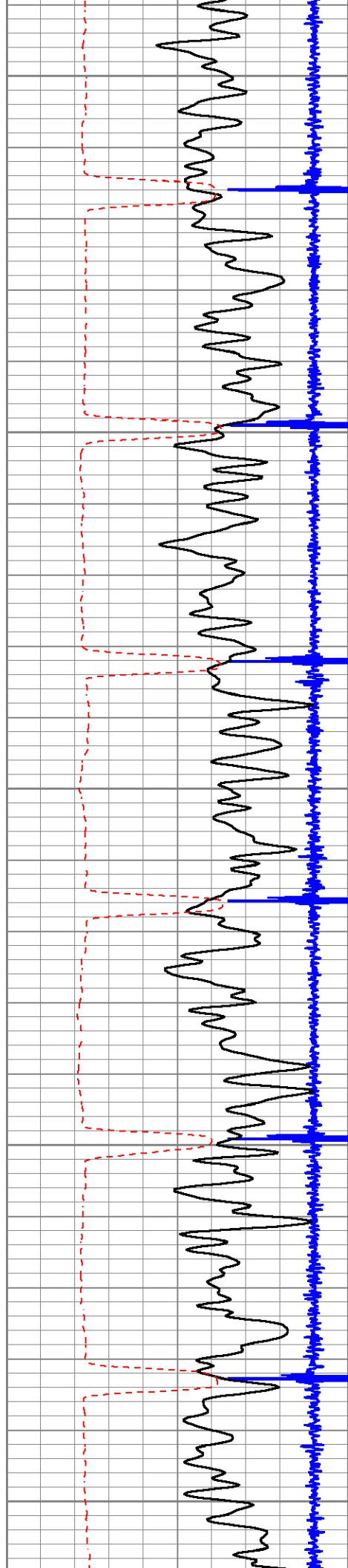
950

1000

1050







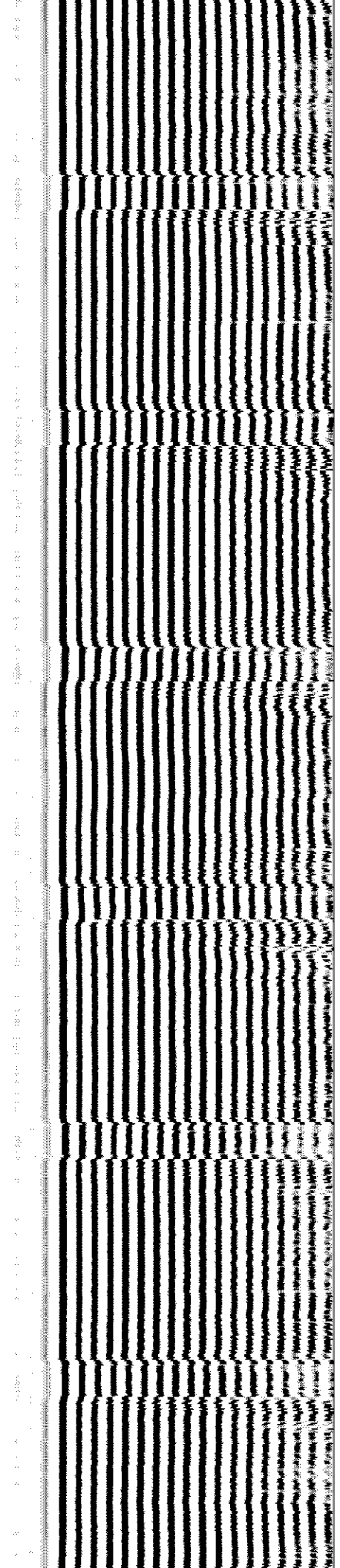
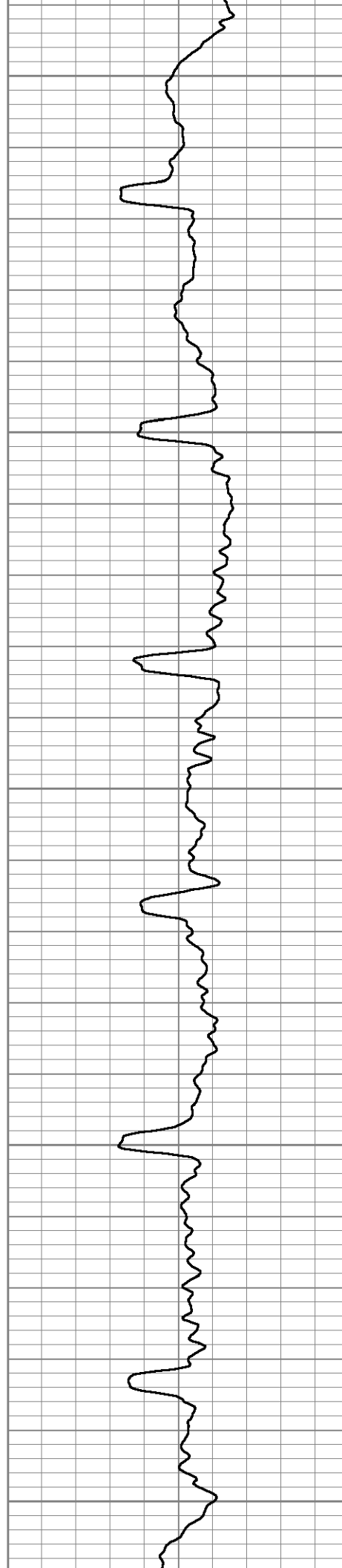
1100

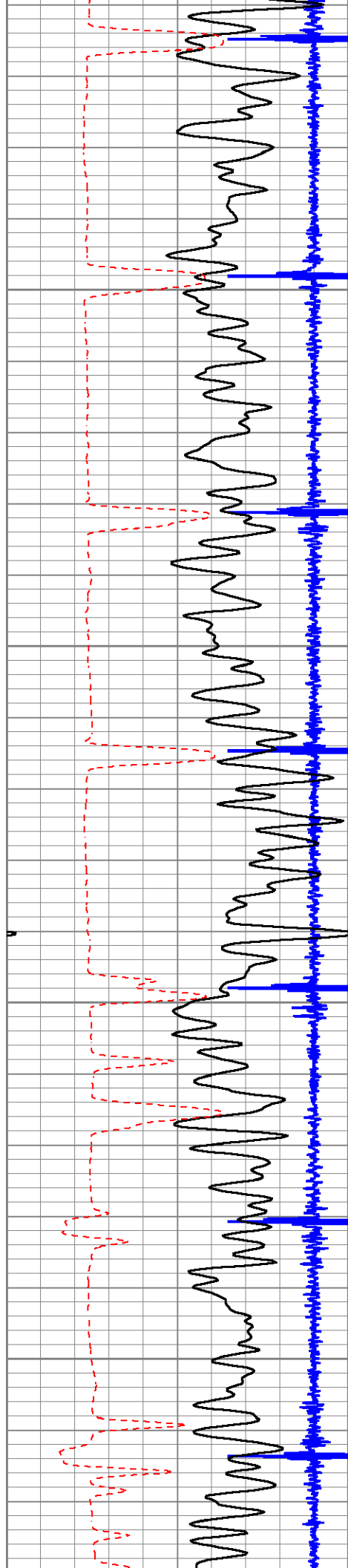
1150

1200

1250

1300



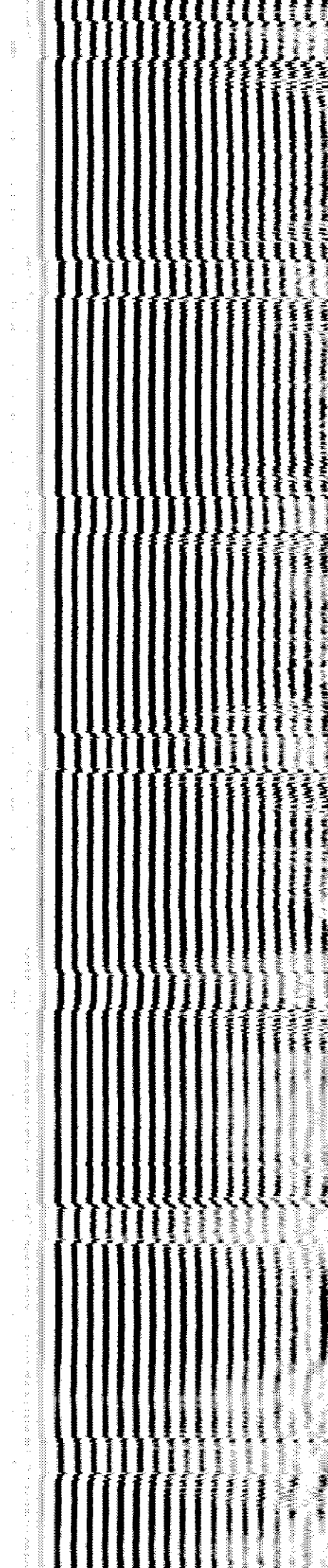
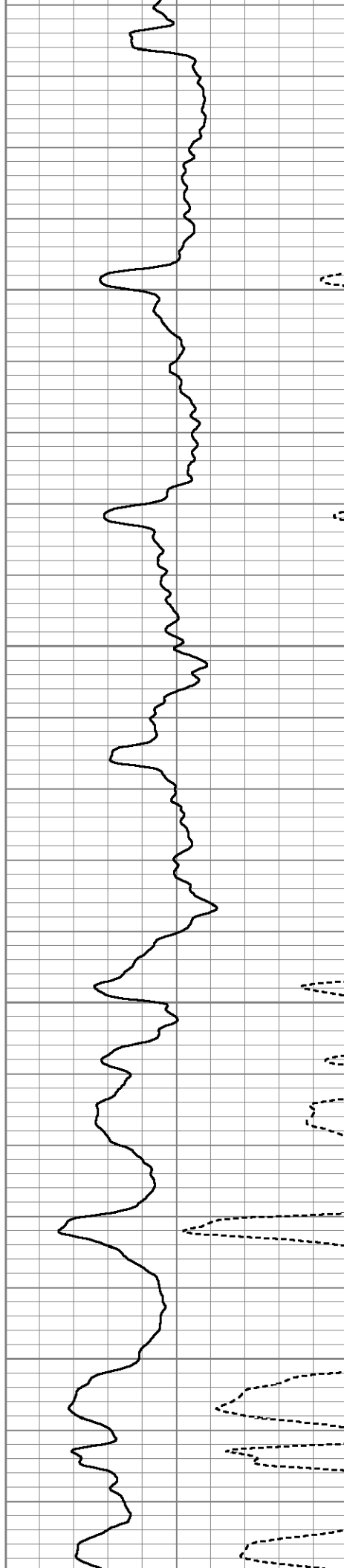


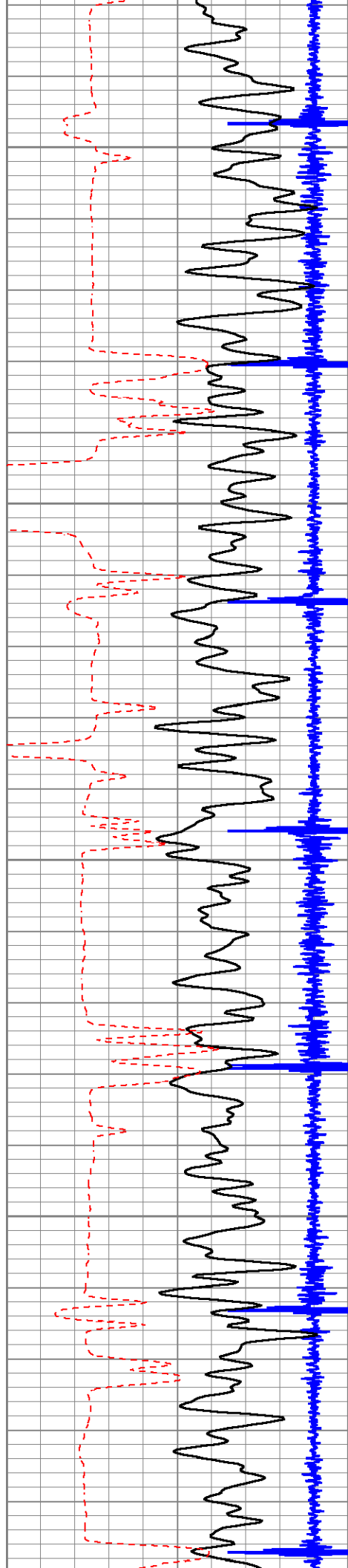
1350

1400

1450

1500





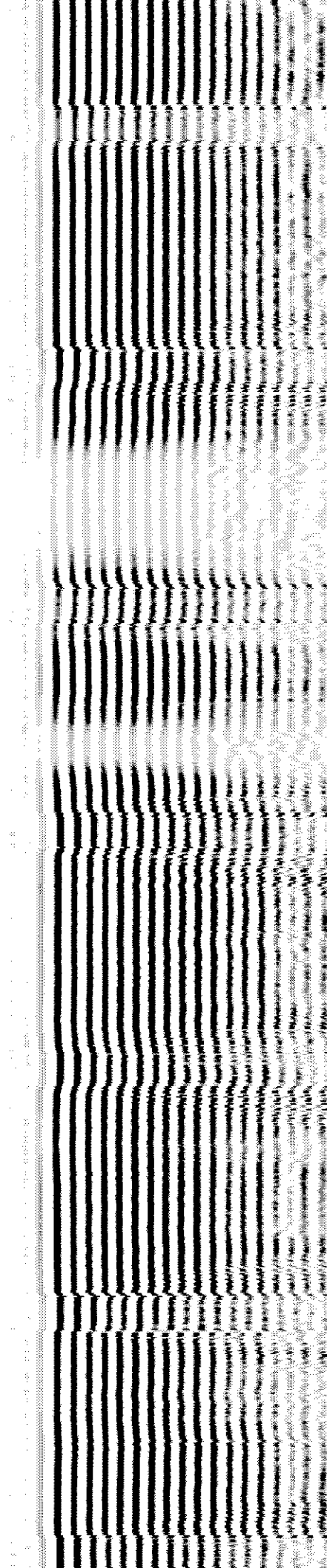
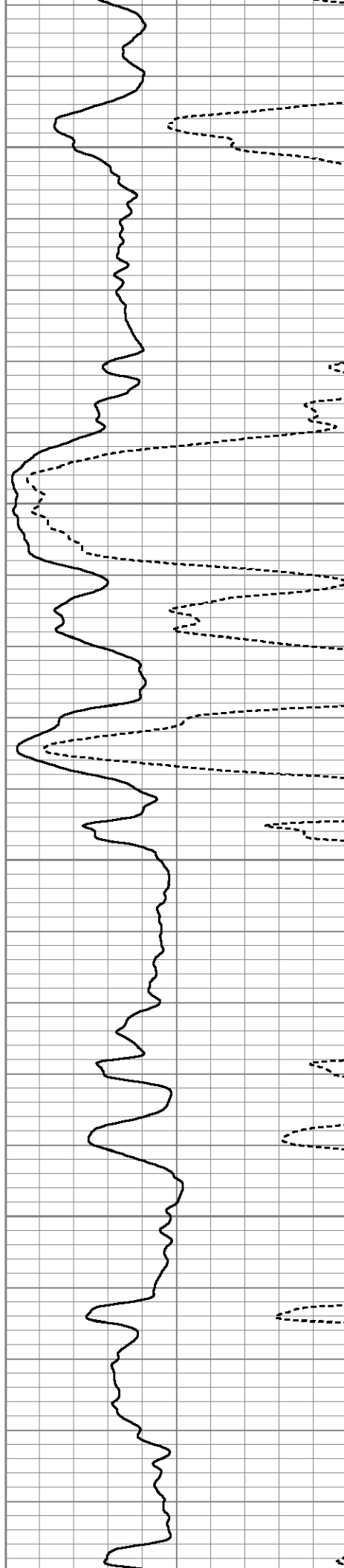
1550

1600

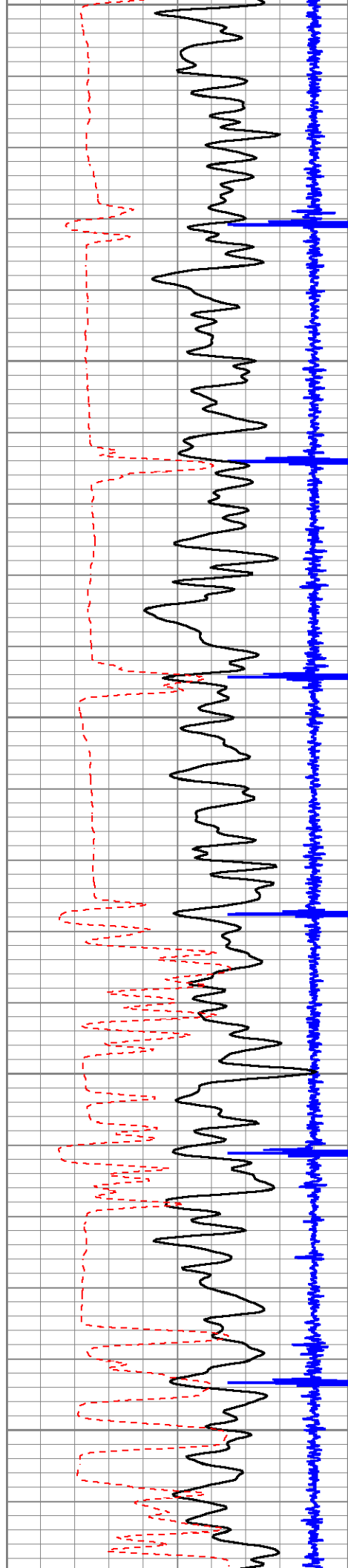
1650

1700

1750







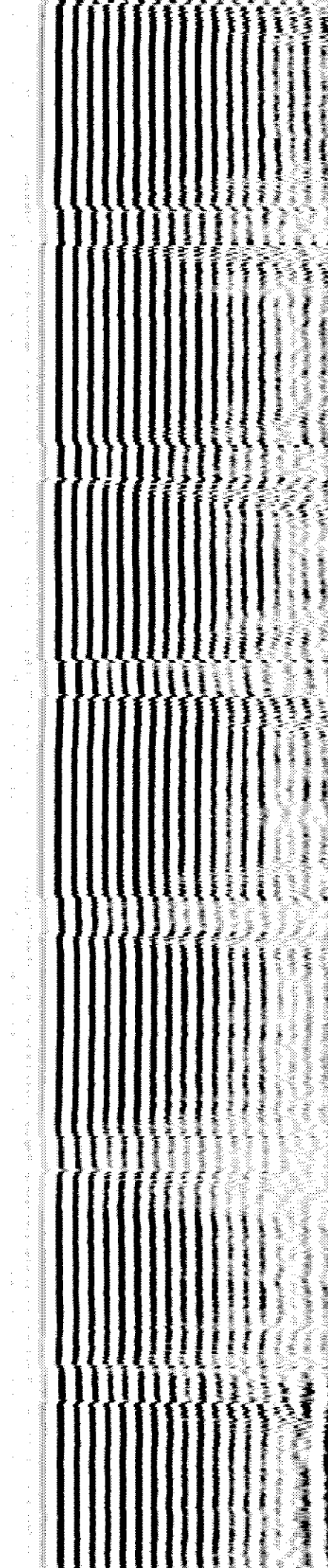
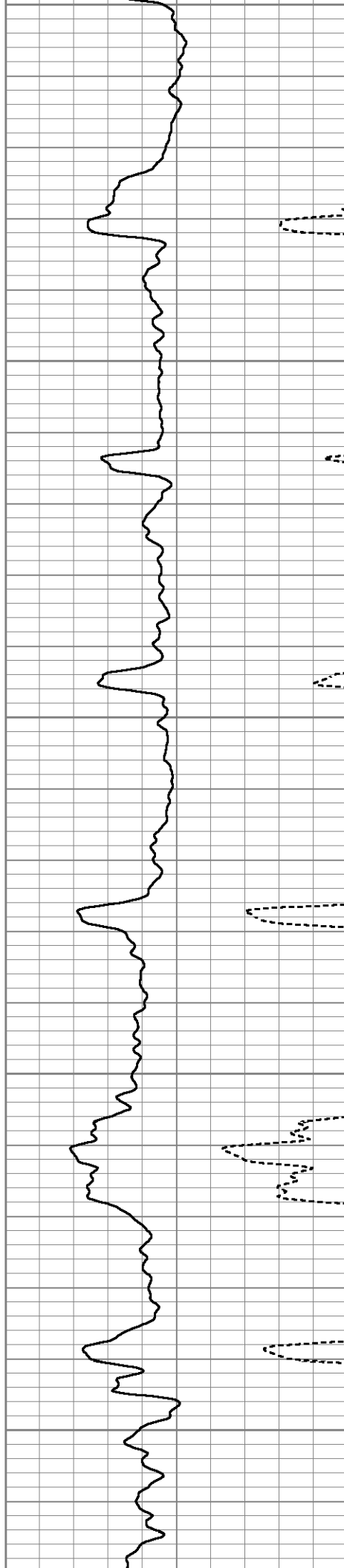
1750

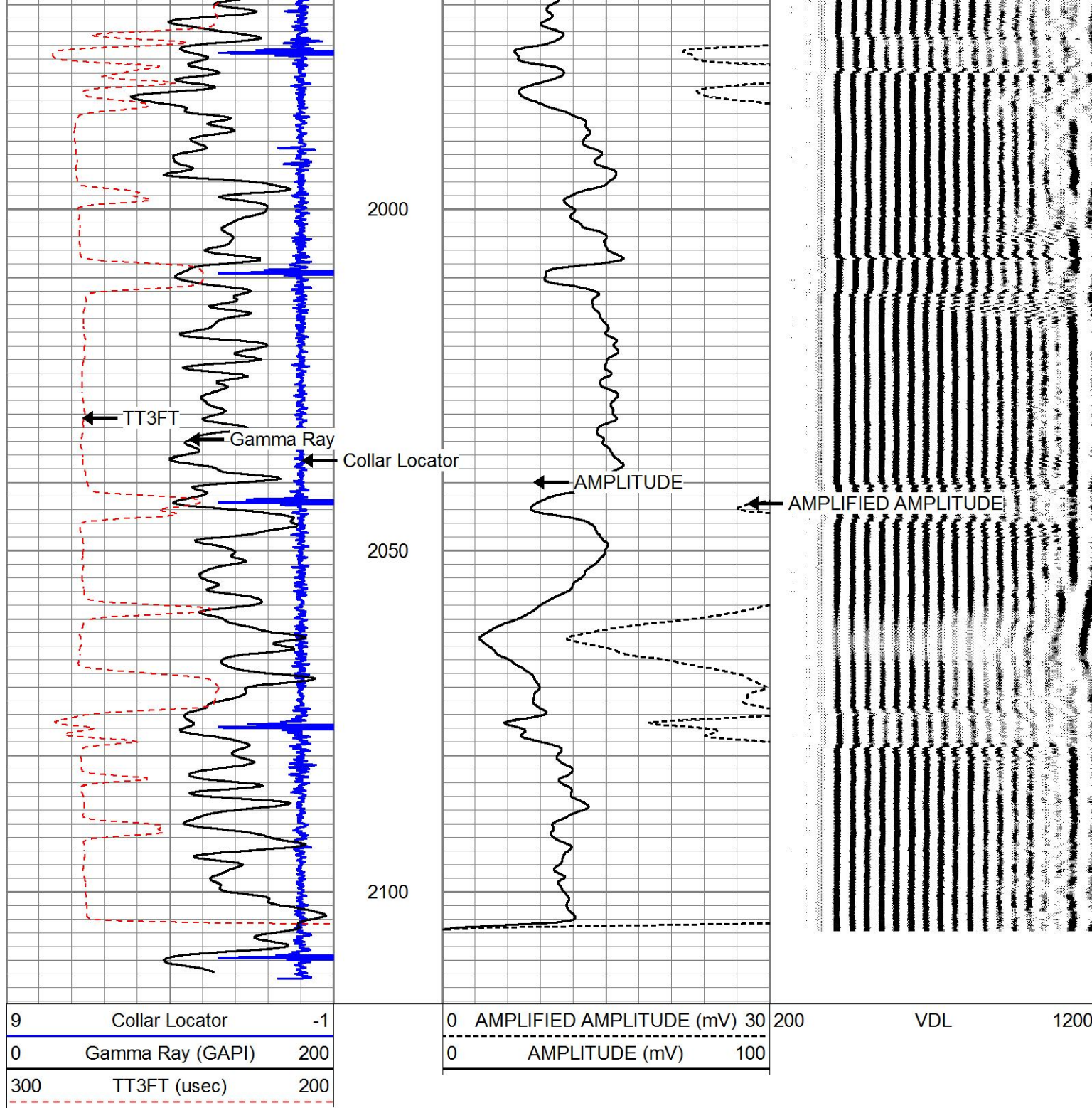
1800


1850

1900

1950







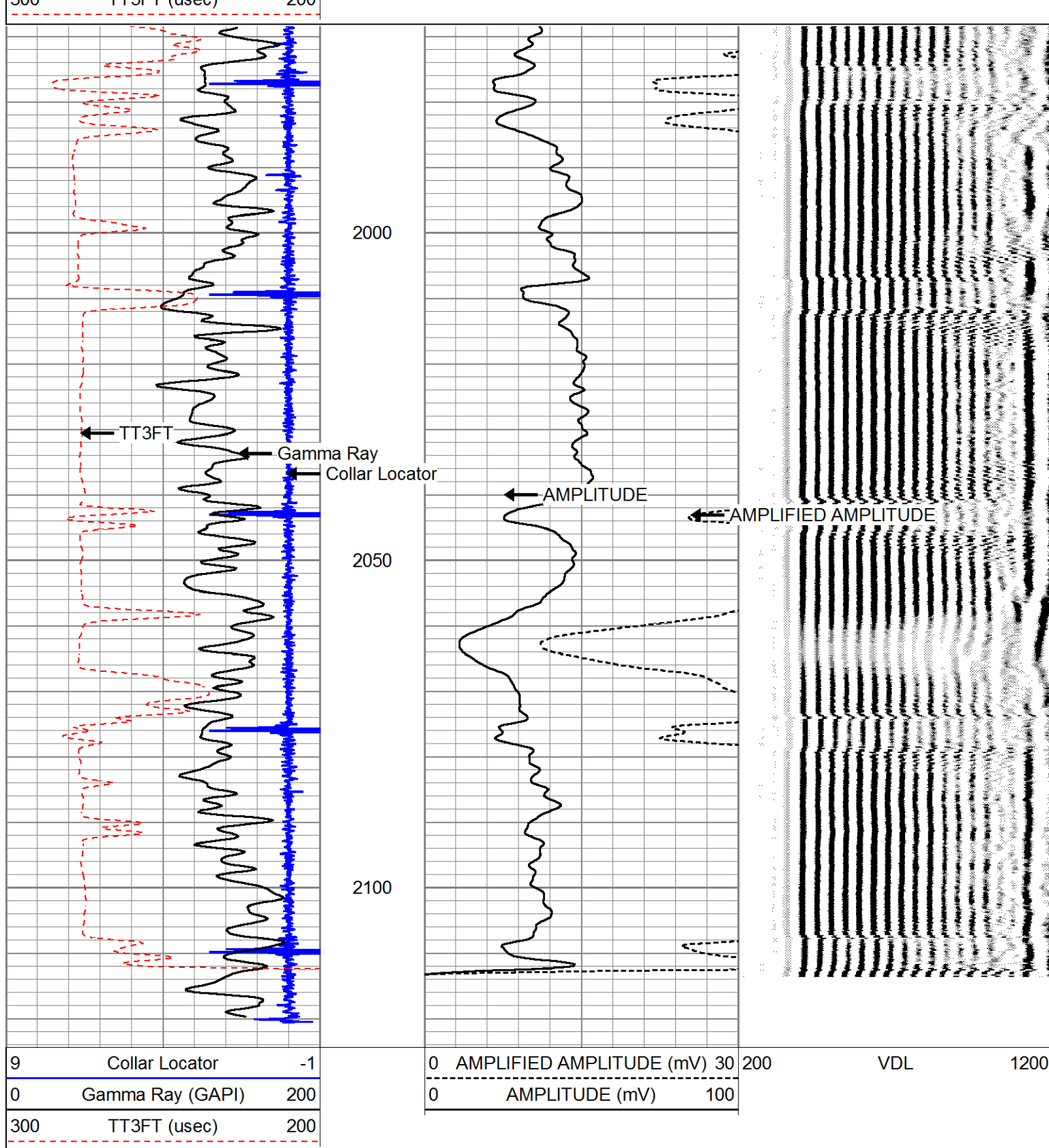
**PIONEER**  
Pioneer Energy Services

## 4.5 Repeat Section

Log ran with 0 PSI surface induced pressure.

Database File	stelbar_axsom1-25_cbl.db
Dataset Pathname	pass3
Presentation Format	cbl_drs
Dataset Creation	Fri Nov 06 11:31:15 2015
Charted by	Depth in Feet scaled 1:240

9	Collar Locator	-1	0	AMPLIFIED AMPLITUDE (mV)	30	200	VDL	1200
0	Gamma Ray (GAPI)	200	0	AMPLITUDE (mV)	100			
300	TT3FT (u sec)	200						



### Calibration Report

Database File stelbar\_axsom1-25\_cbl.db  
Dataset Pathname pass5  
Dataset Creation Fri Nov 06 11:58:32 2015

### Gamma Ray Calibration Report

Serial Number: 111211  
Tool Model: Probe  
Performed: Thu Jan 29 15:32:07 2015

Calibrator Value: 1.0 GAPI



Calibrator Value:	1.0	GAPI
Background Reading:	0.0	cps
Calibrator Reading:	1.0	cps
Sensitivity:	1.0500	GAPI/cps

### Segmented Cement Bond Log Calibration Report

Serial Number:	130434_7in
Tool Model:	Probe
Calibration Casing Diameter:	4.500 in
Calibration Depth:	376.633 ft

Master Calibration, performed Fri Nov 06 11:24:00 2015:

	Raw (v)		Calibrated (mv)		Results	
	Zero	Cal	Zero	Cal	Gain	Offset
3'	0.021	0.996	0.000	81.196	83.263	-1.751
CAL	0.011	0.778				
5'	0.013	0.731	0.000	81.196	113.089	-1.487
SUM						
S1	0.419	0.934	0.000	100.000	194.197	-81.415
S2	0.021	0.928	0.000	100.000	110.195	-2.308
S3	0.023	0.961	0.000	100.000	106.610	-2.473
S4	0.022	1.015	0.000	100.000	100.709	-2.214
S5	0.033	1.048	0.000	100.000	98.574	-3.275
S6	0.031	1.076	0.000	100.000	95.689	-2.967
S7	0.020	1.053	0.000	100.000	96.764	-1.921
S8	0.017	0.992	0.000	100.000	102.522	-1.726



Company	Stelbar Oil Corporation, Inc.
Well	Axsom 1-25
Field	DeNova
Parish	Washington
State	Colorado