




Casing Depths		MD	Depth	Date		KB: 4586.00	
Surface: 431		Start: 5850	9/29/2014		GL: 4569		
Intermediate:		End: 11110.09			DF: 4586		
Run #	Hole Size (in)	Gamma Offset	Survey Offset	Depth Start	Depth End	Date Start	Date End
01	8.75	51.03	59.78	0.00	6005.20	Sep 29, 14	Sep 30, 14
02	8.75	49.94	58.69	6005.20	6950.00	Sep 30, 14	Oct 02, 14
03	6 1/8	55.13	63.88	6950.00	10457.30	Oct 02, 14	Oct 04, 14
04	6 1/8	55.13	63.88	10457.30	11110.10	Oct 04, 14	Oct 05, 14

Total Directional LLC uses its best efforts to provide its customers with accurate information and interpretations in conjunction with services performed but will not be held liable or responsible for the accuracy of such information or interpretation.

Printed: Oct 05, 2014 14:22

Comments:



Client:

Bonanza Creek

Well Name:

N. Platte 11-41-33HC

API/UWI:

05-123-39906-00

Well Lic:

Surface LSD:

KB:

4586.00

State/Prov:

Colorado

Job #:

2009-381-2

GL:

4569

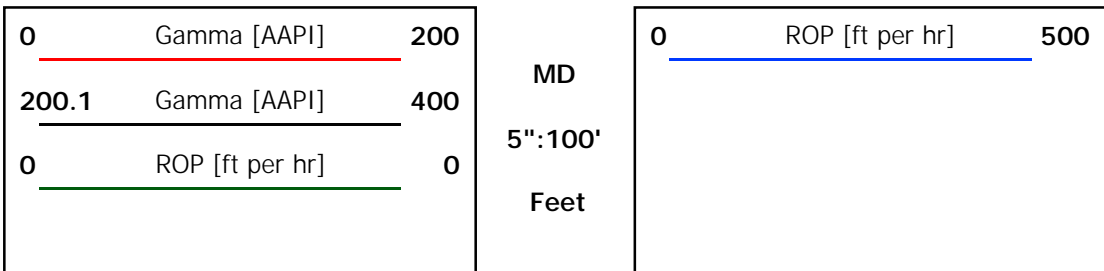
Country:

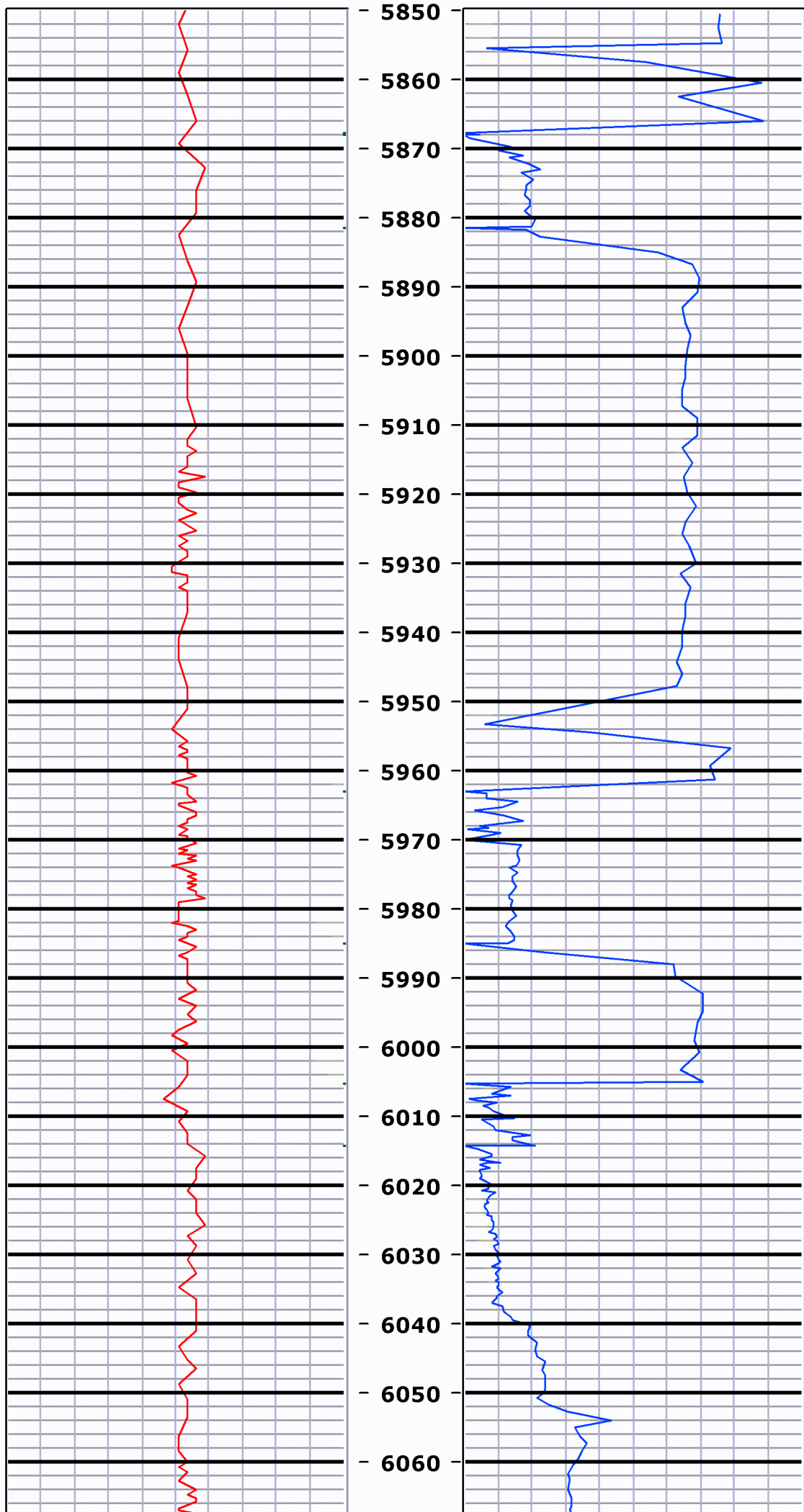
USA

MWD Kit:

DF:

4586



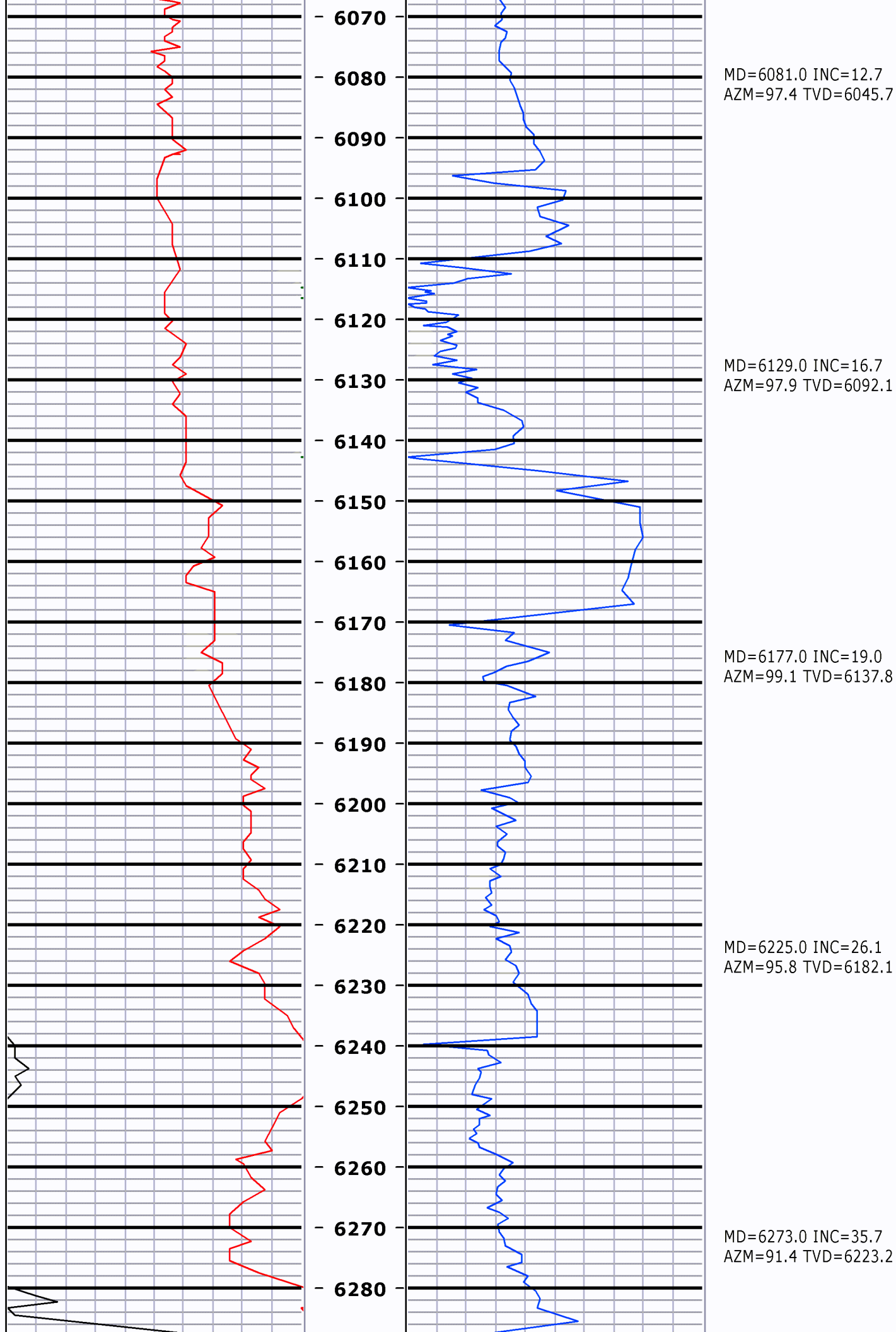


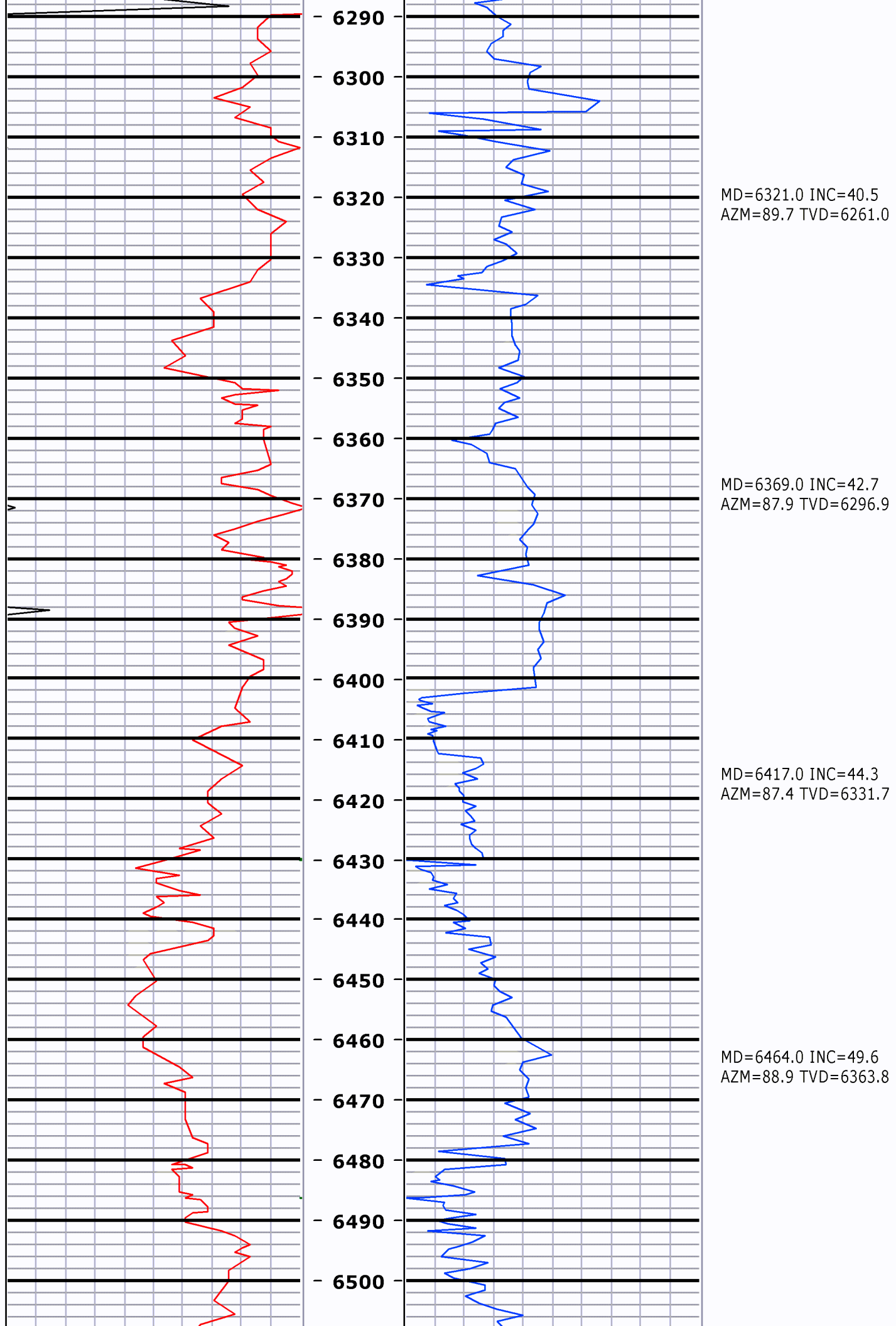
MD=5891.0 INC=1.9
AZM=227.5 TVD=5856.3

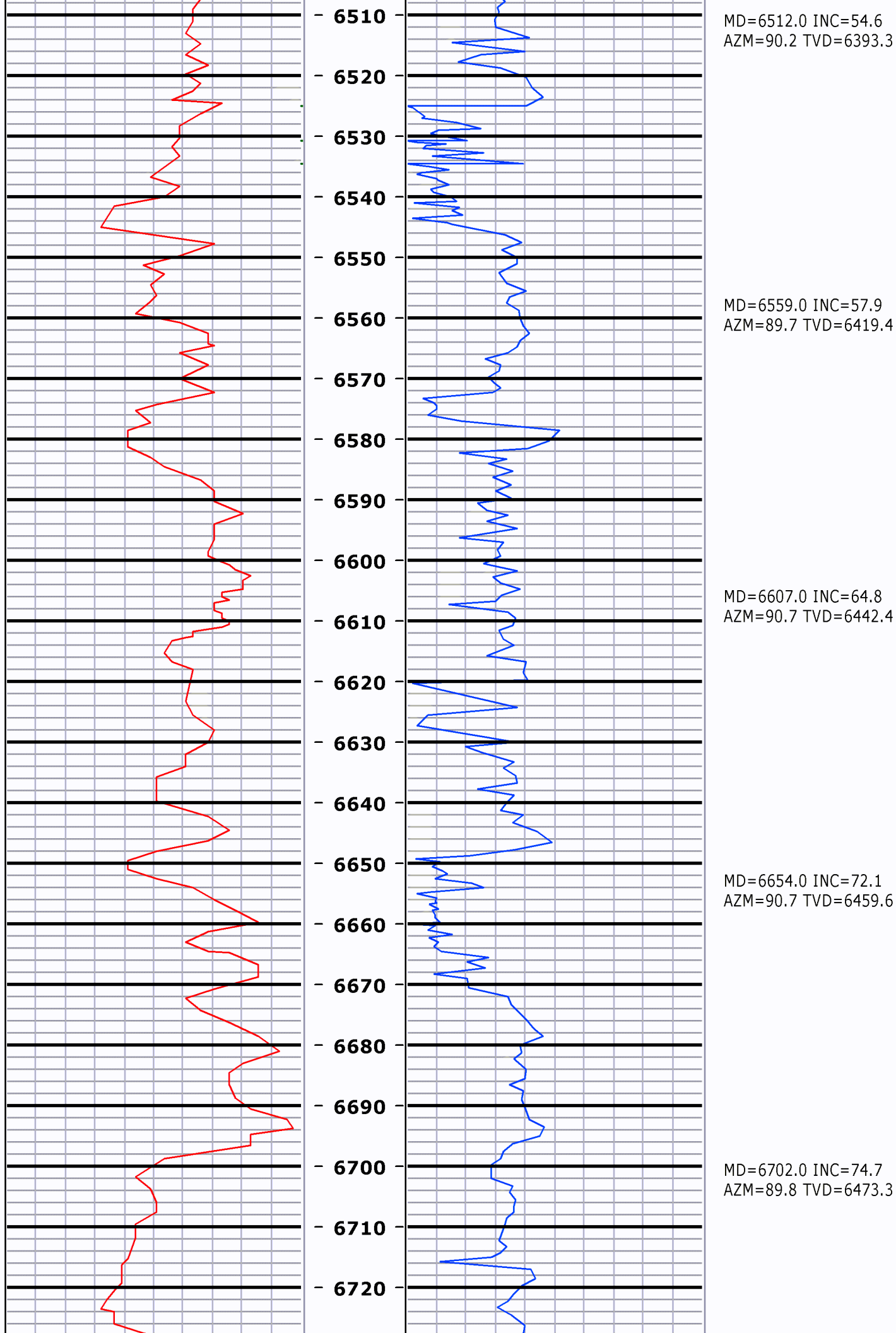
MD=5943.0 INC=1.6
AZM=220.8 TVD=5908.3

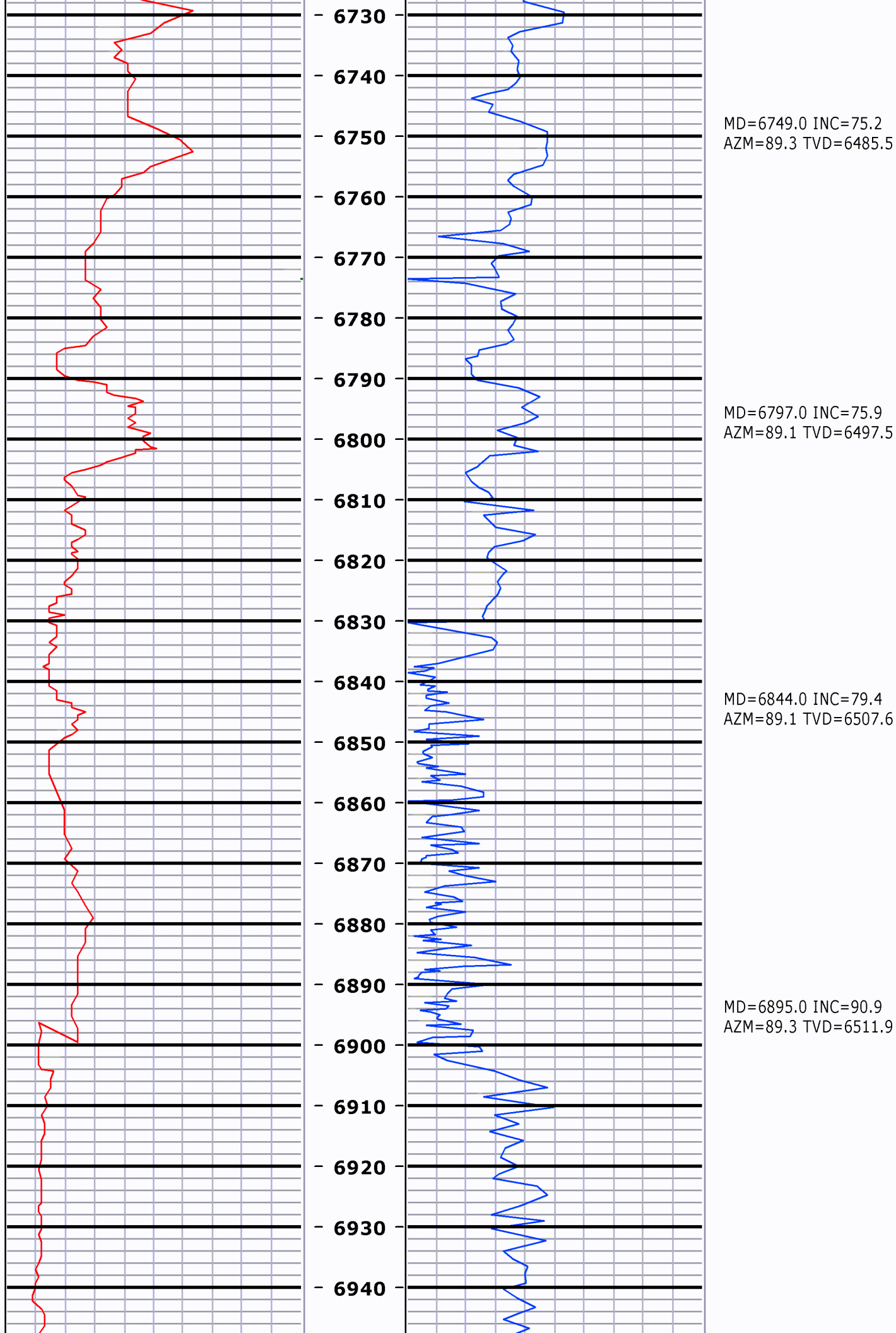
MD=5986.0 INC=0.6
AZM=236.1 TVD=5951.3

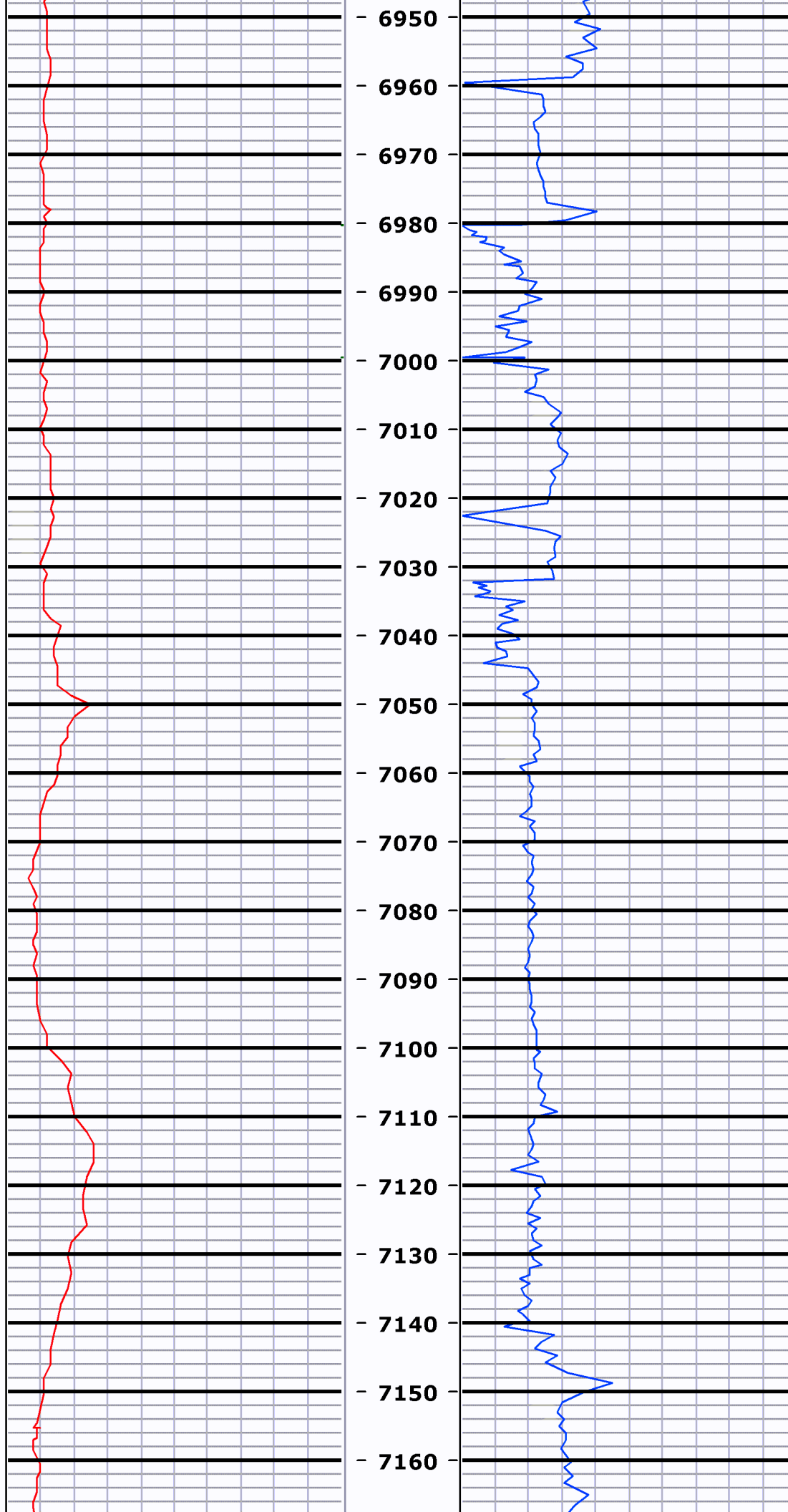
MD=6034.0 INC=4.2
AZM=95.6 TVD=5999.2







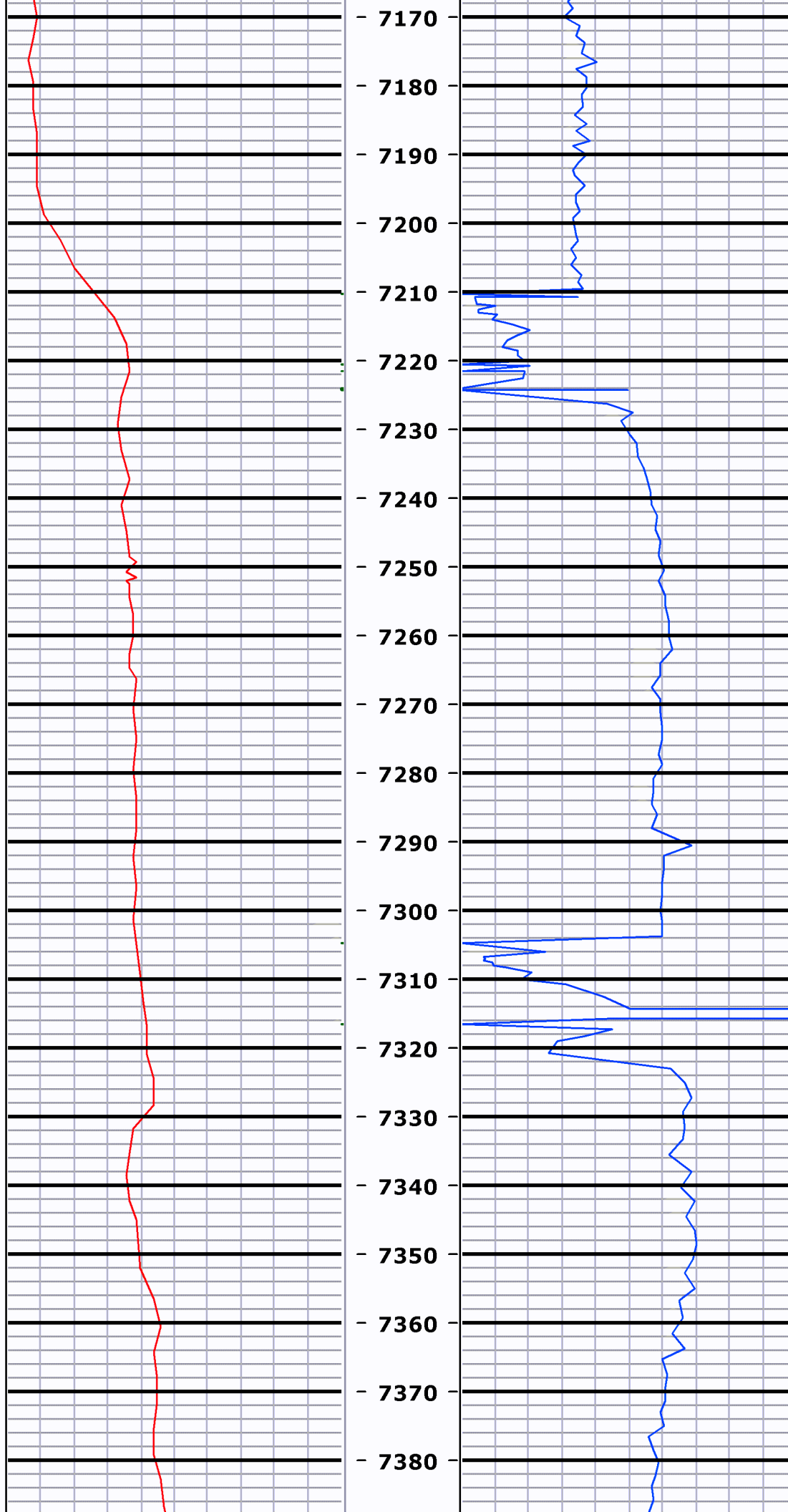




MD=6995.0 INC=89.8
AZM=89.3 TVD=6511.3

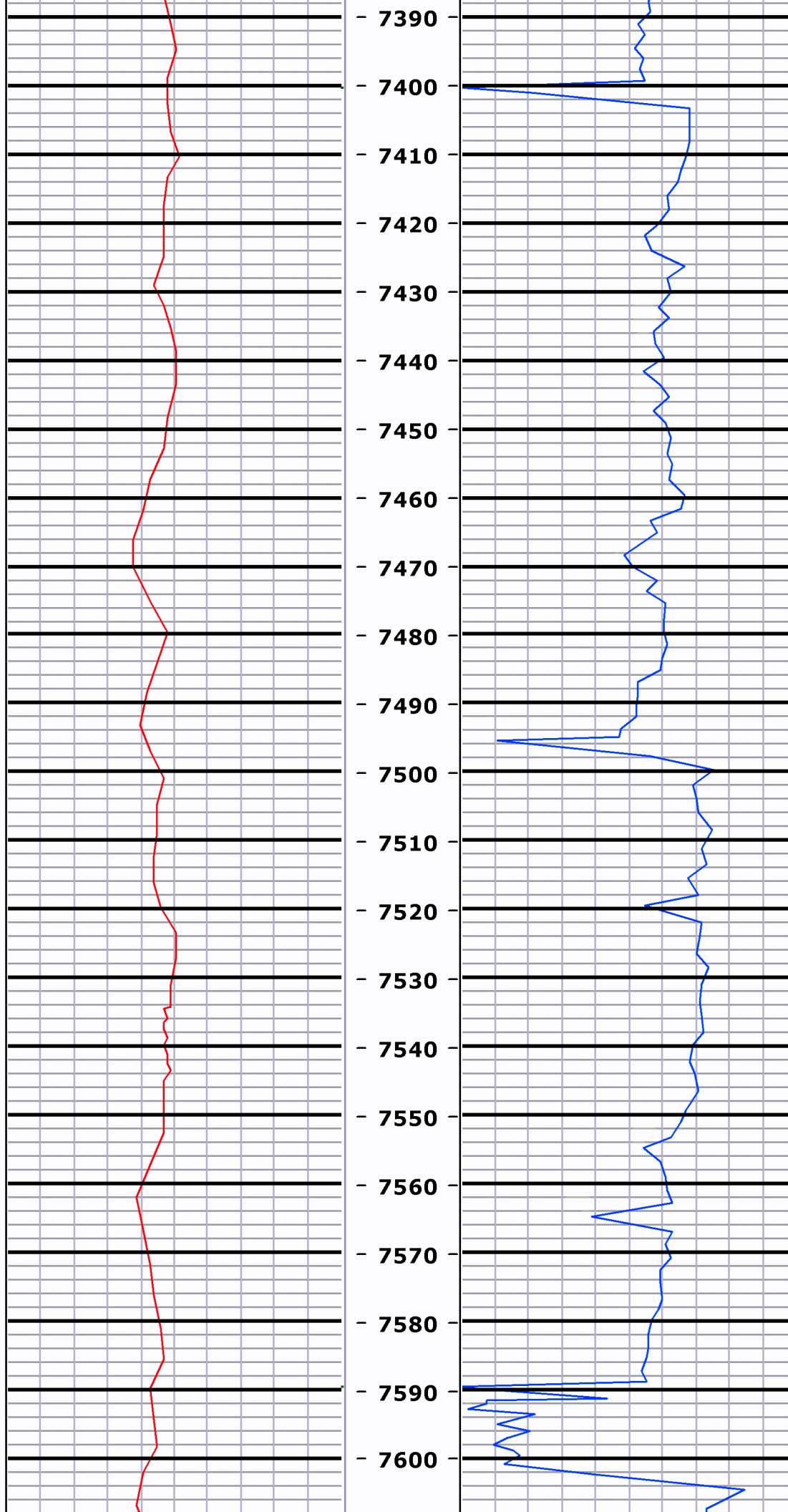
MD=7052.0 INC=87.6
AZM=90.3 TVD=6512.5

MD=7146.0 INC=87.4
AZM=89.7 TVD=6516.6



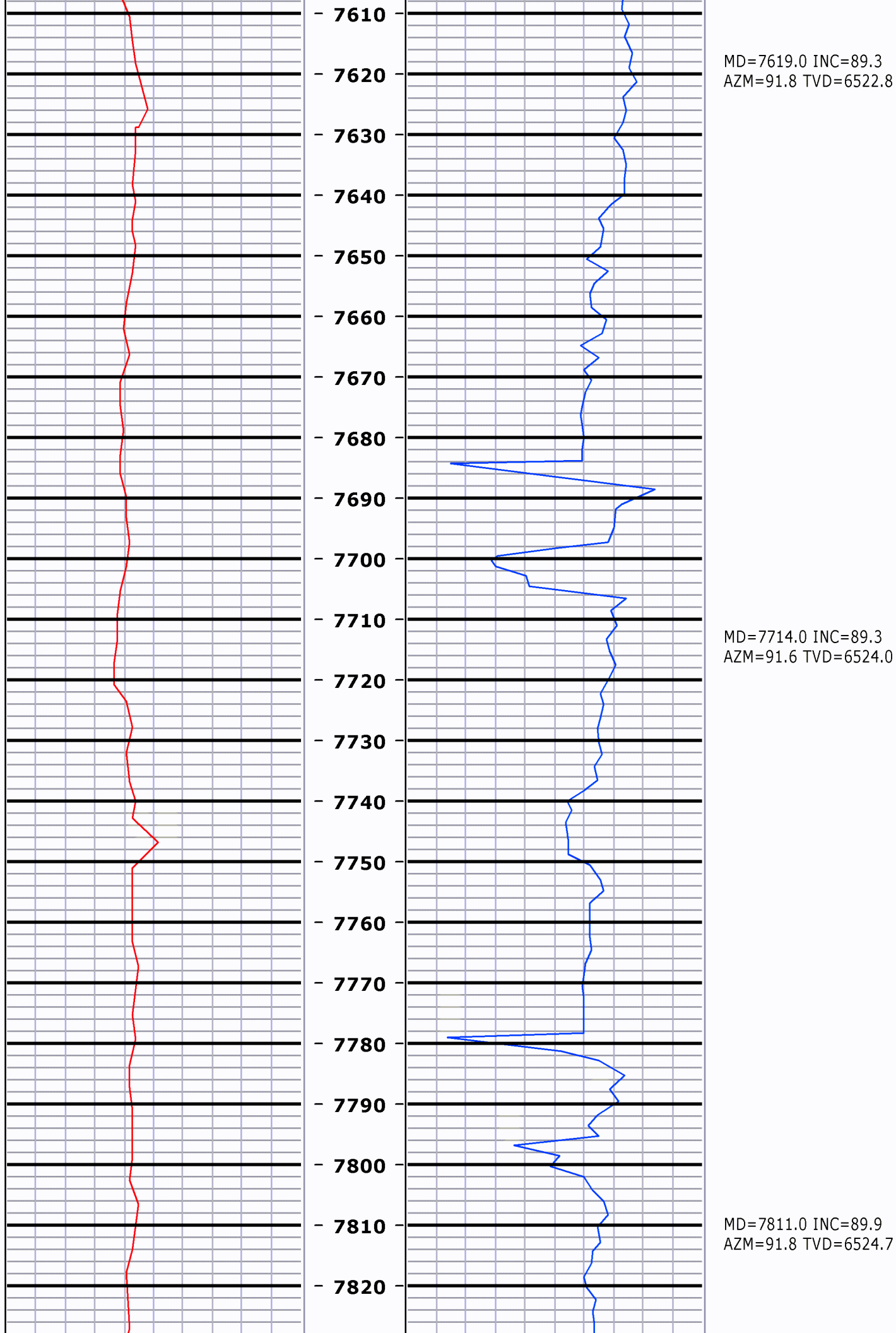
MD=7240.0 INC=88.0
AZM=90.2 TVD=6520.4

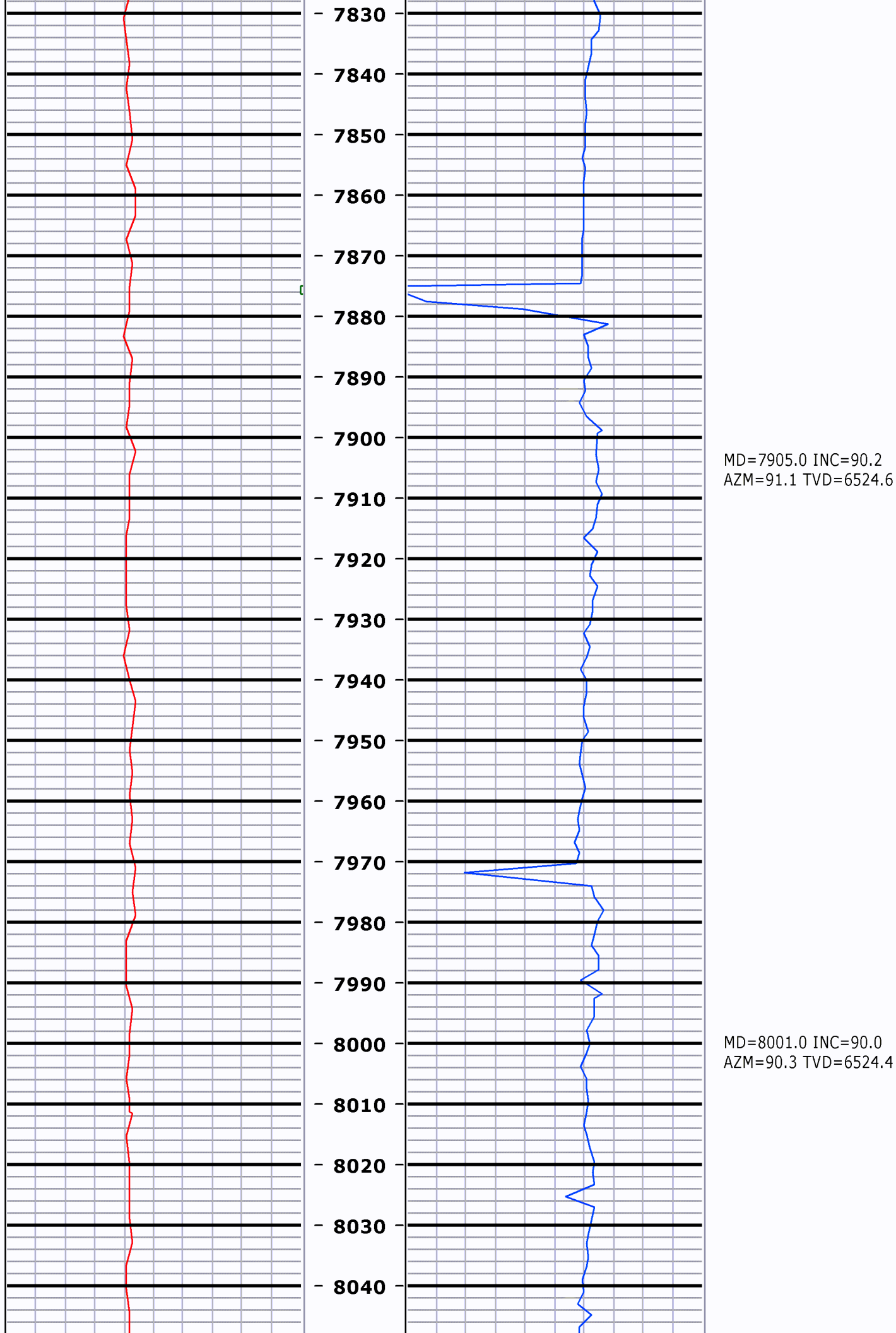
MD=7336.0 INC=89.5
AZM=90.3 TVD=6522.5

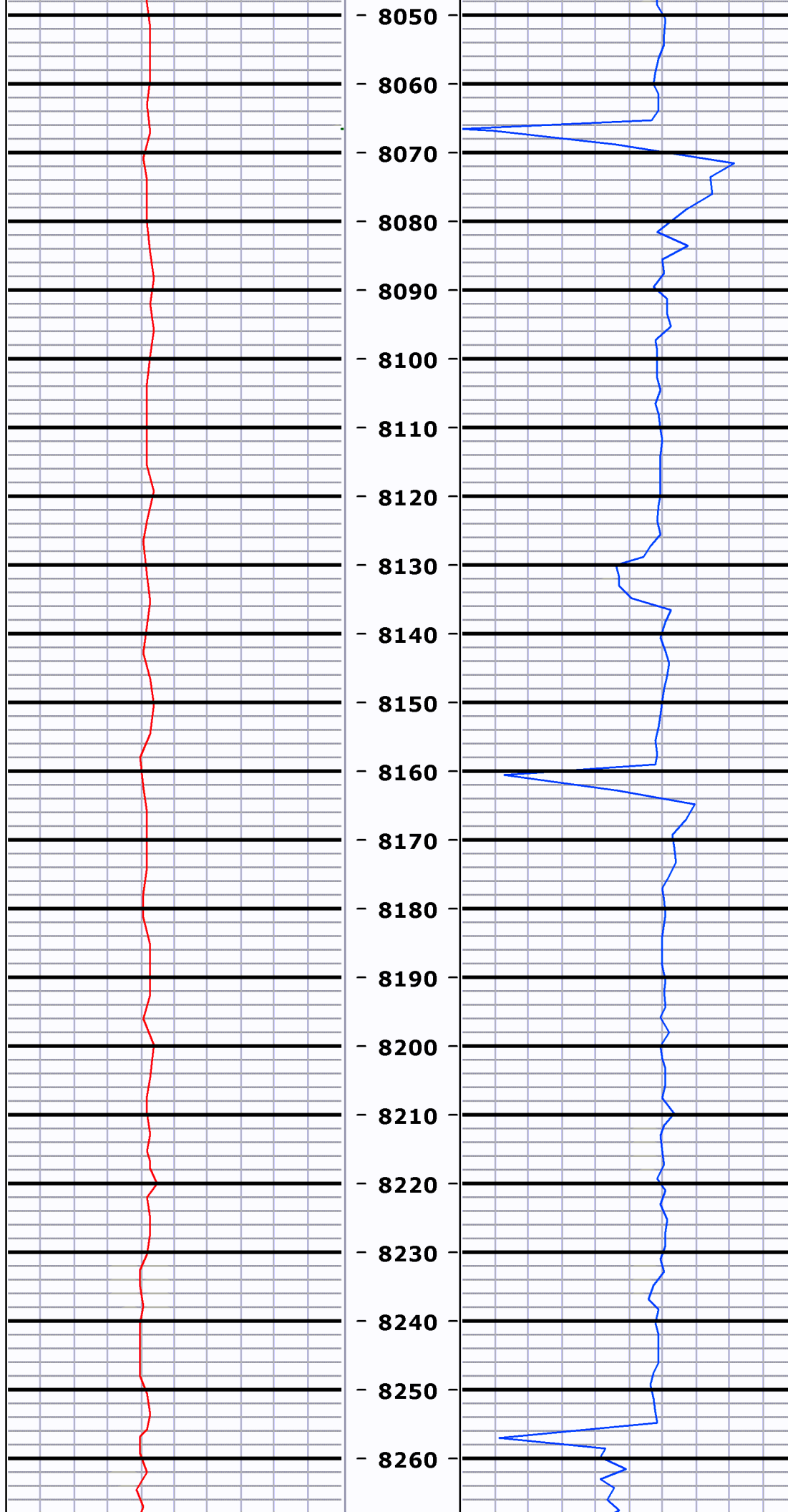


MD=7431.0 INC=89.9
AZM=89.8 TVD=6523.0

MD=7525.0 INC=90.5
AZM=90.9 TVD=6522.7

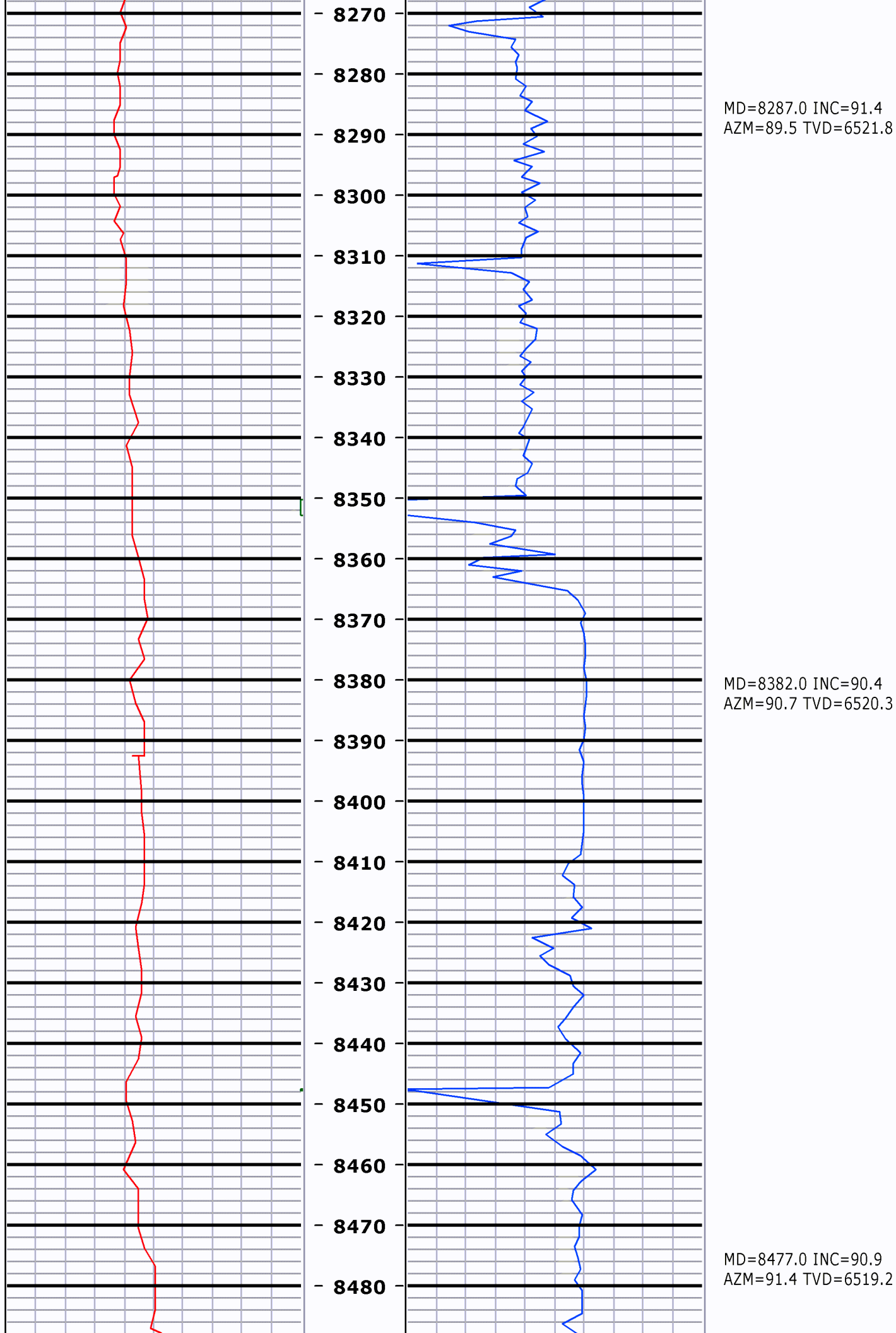


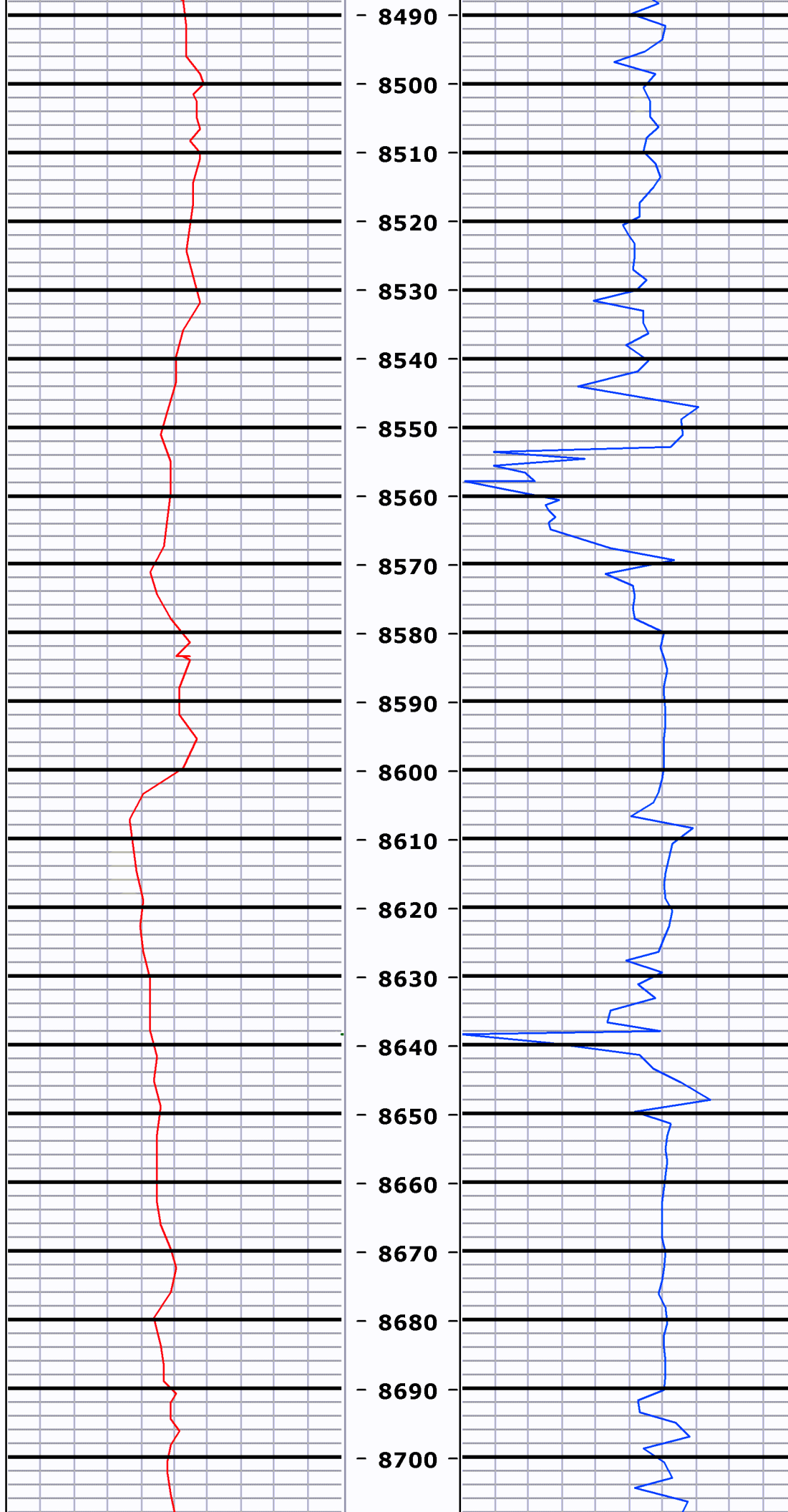




MD=8097.0 INC=90.2
AZM=90.0 TVD=6524.3

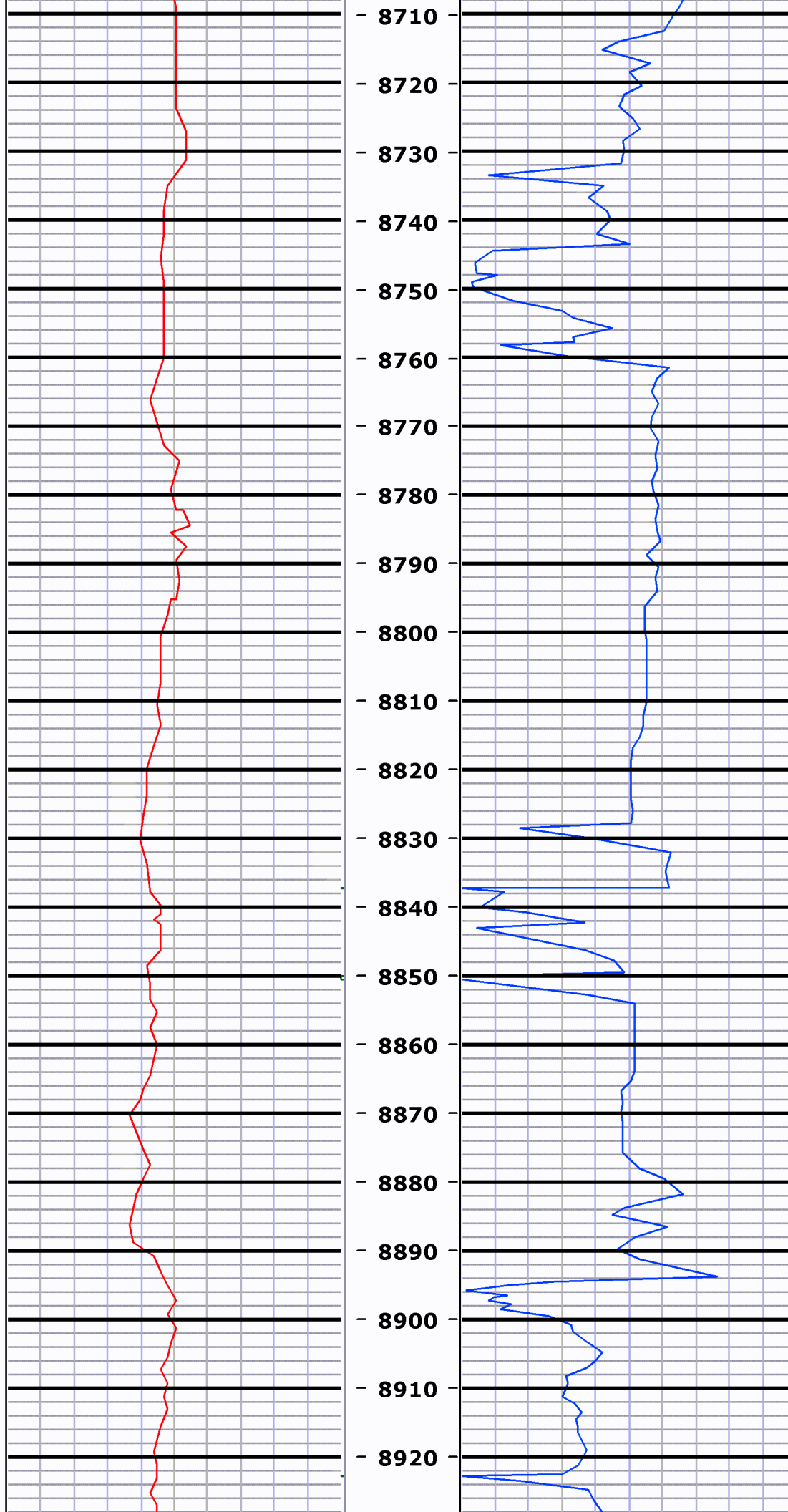
MD=8192.0 INC=90.7
AZM=89.3 TVD=6523.5





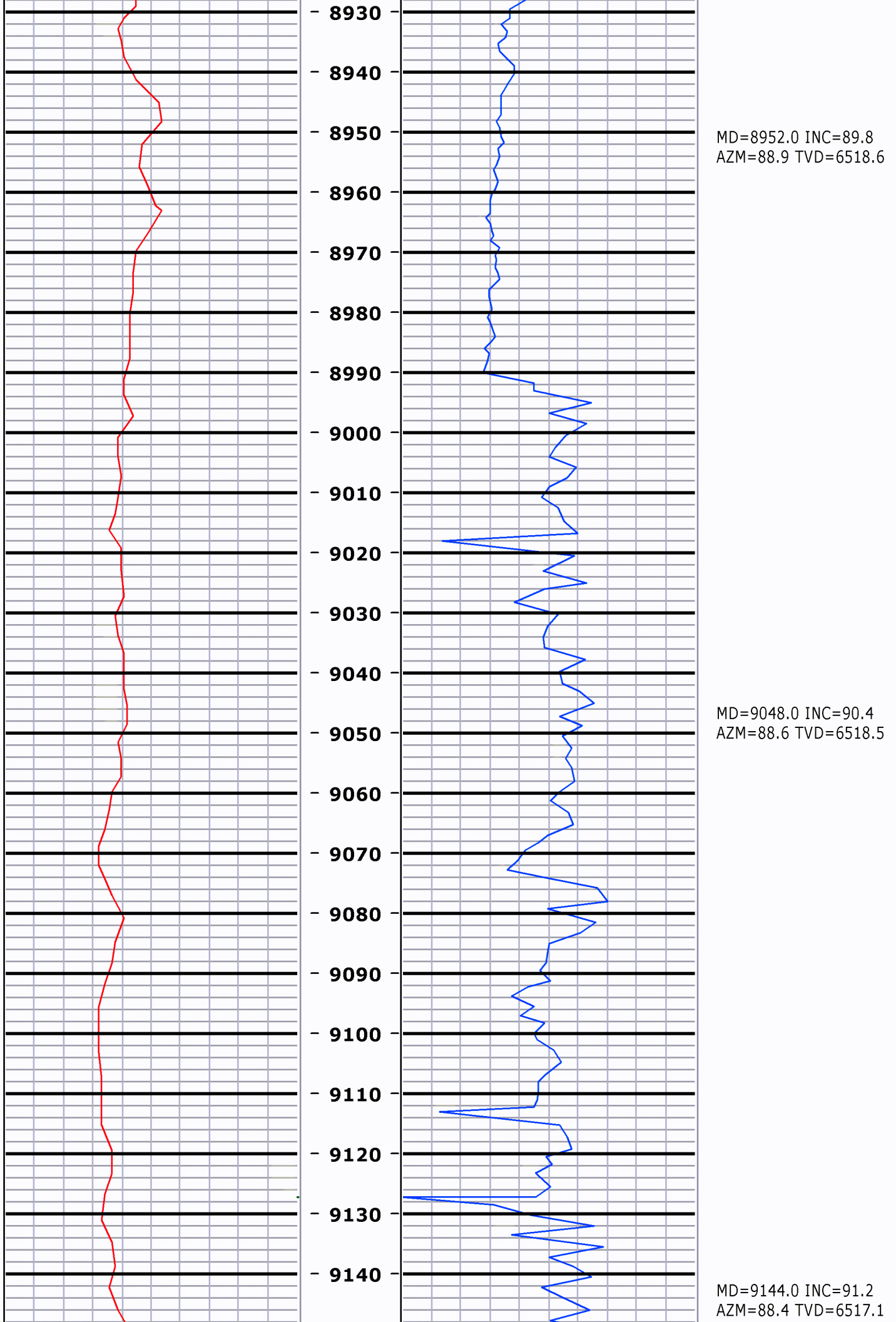
MD=8572.0 INC=89.5
AZM=90.3 TVD=6518.9

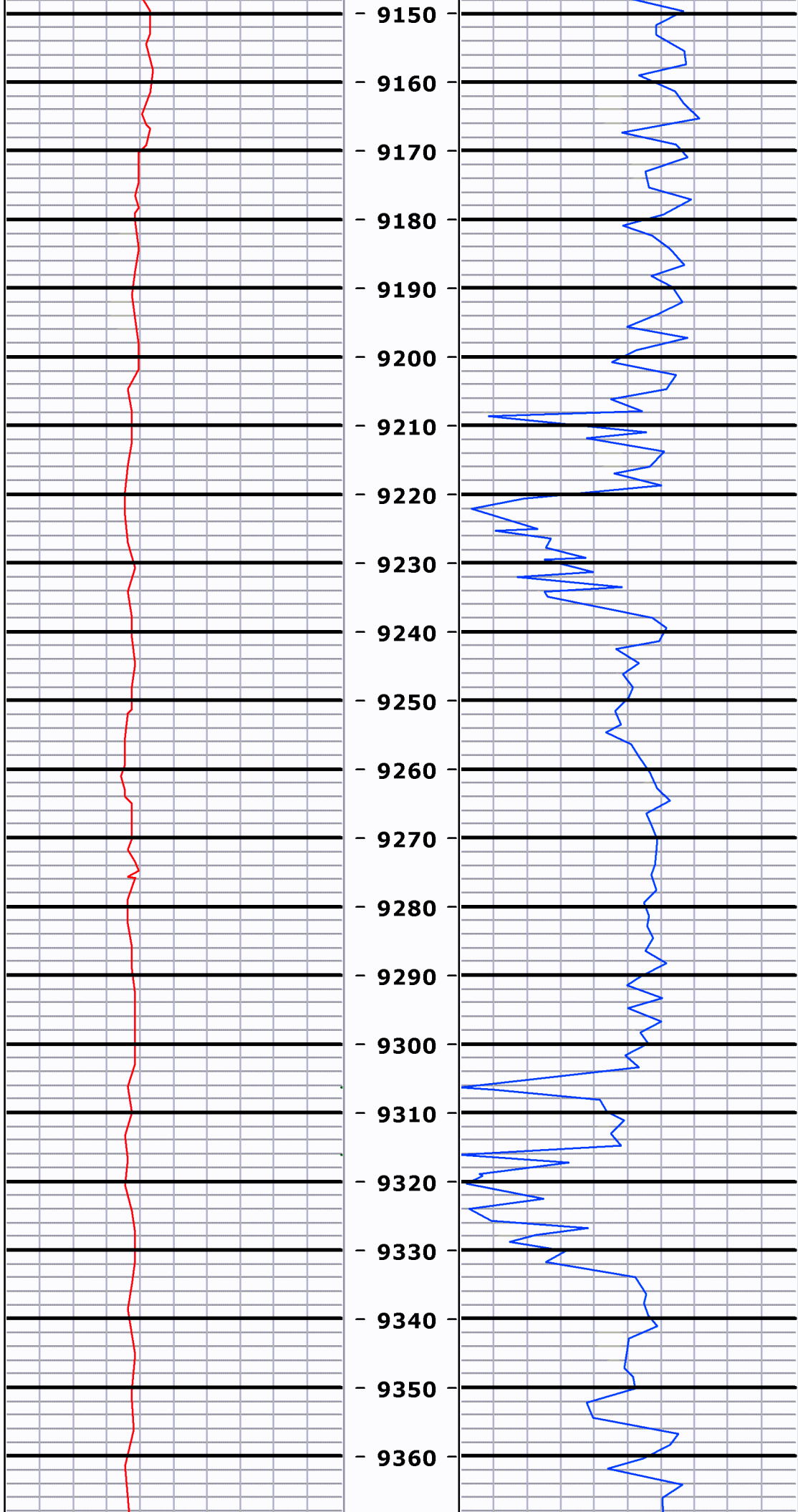
MD=8668.0 INC=90.2
AZM=90.9 TVD=6519.1



MD=8763.0 INC=90.9
AZM=89.7 TVD=6518.2

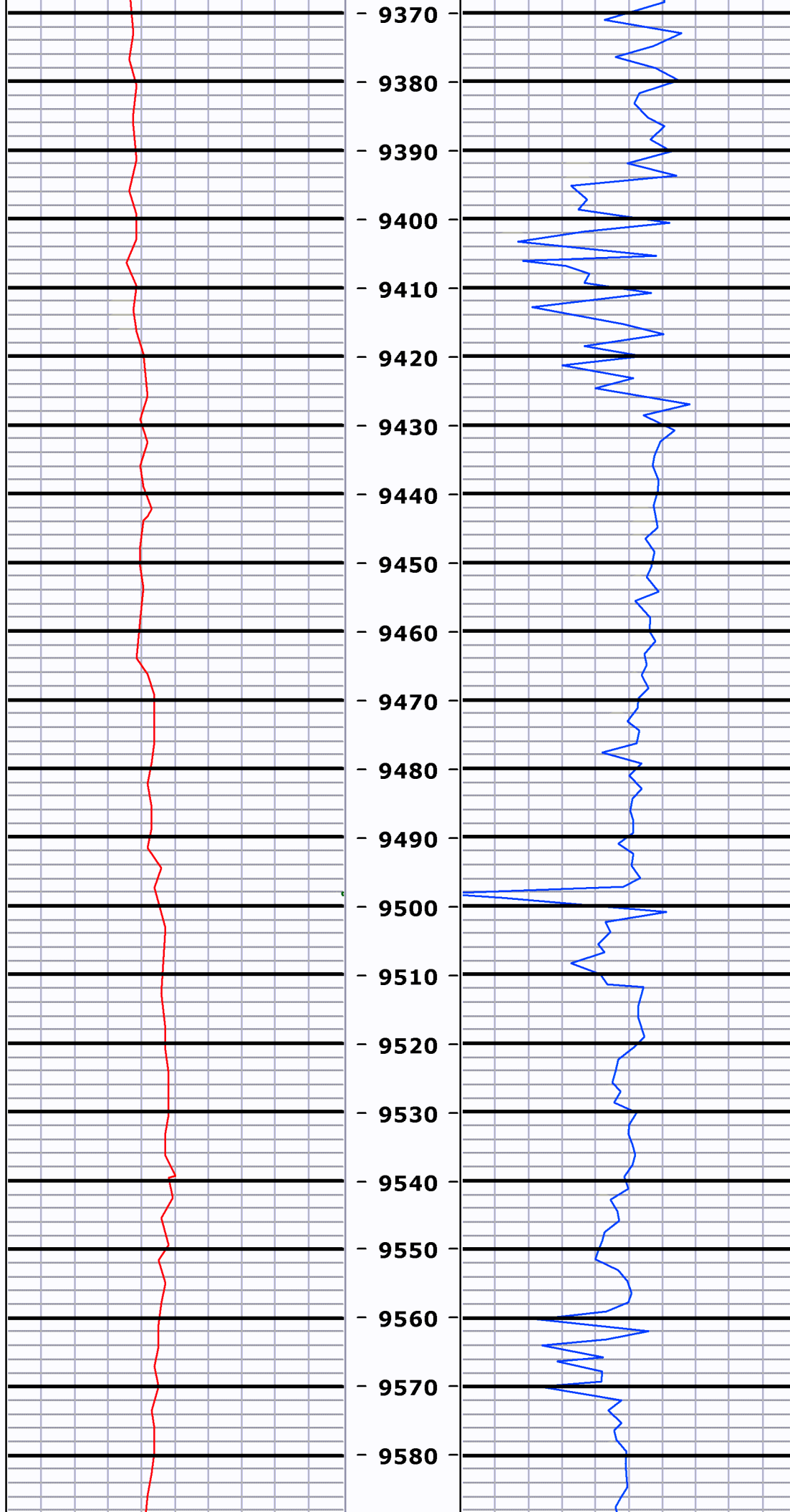
MD=8857.0 INC=89.4
AZM=88.9 TVD=6518.0





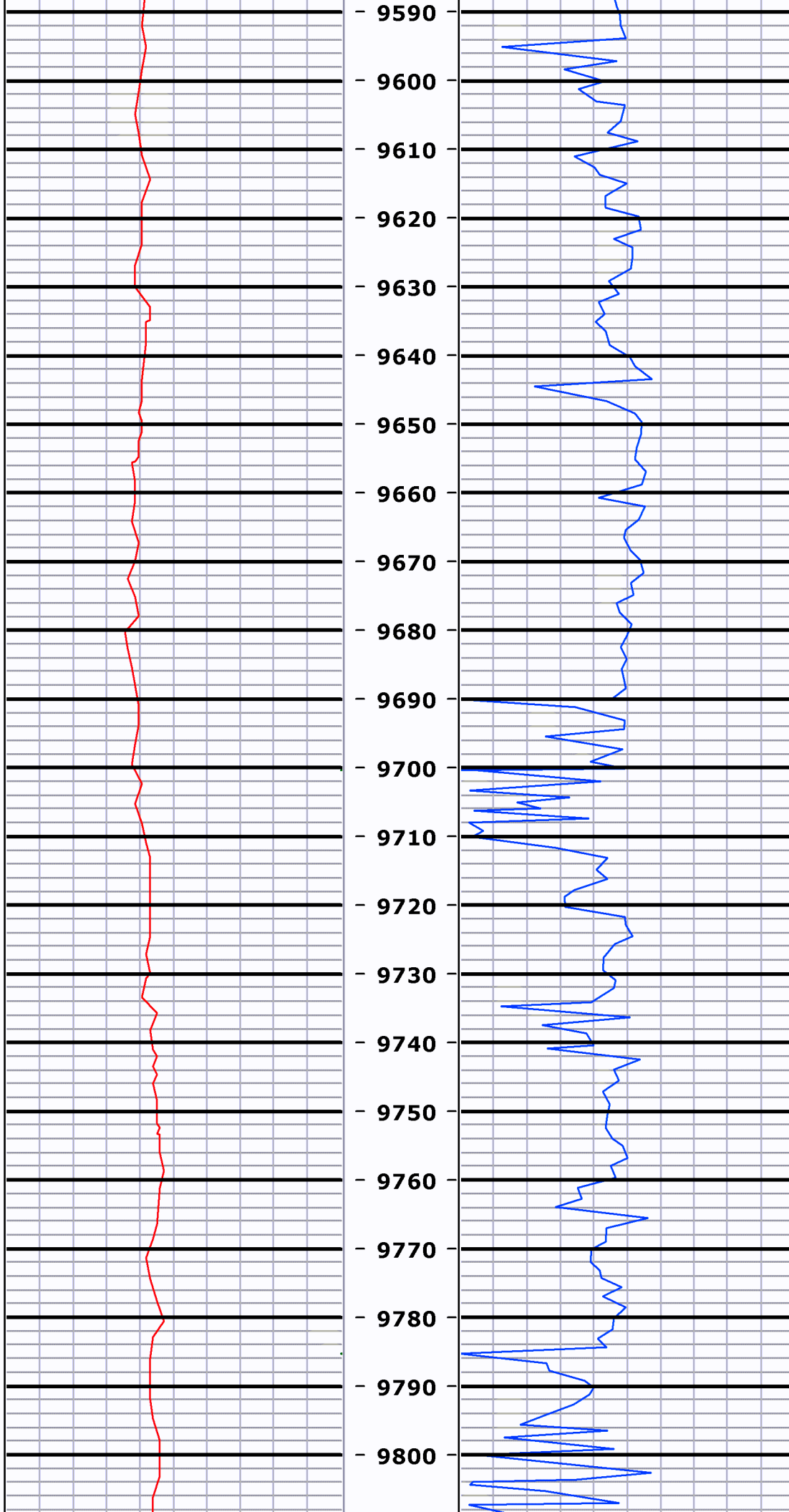
MD=9240.0 INC=89.3
AZM=88.6 TVD=6516.7

MD=9337.0 INC=88.4
AZM=90.2 TVD=6518.7



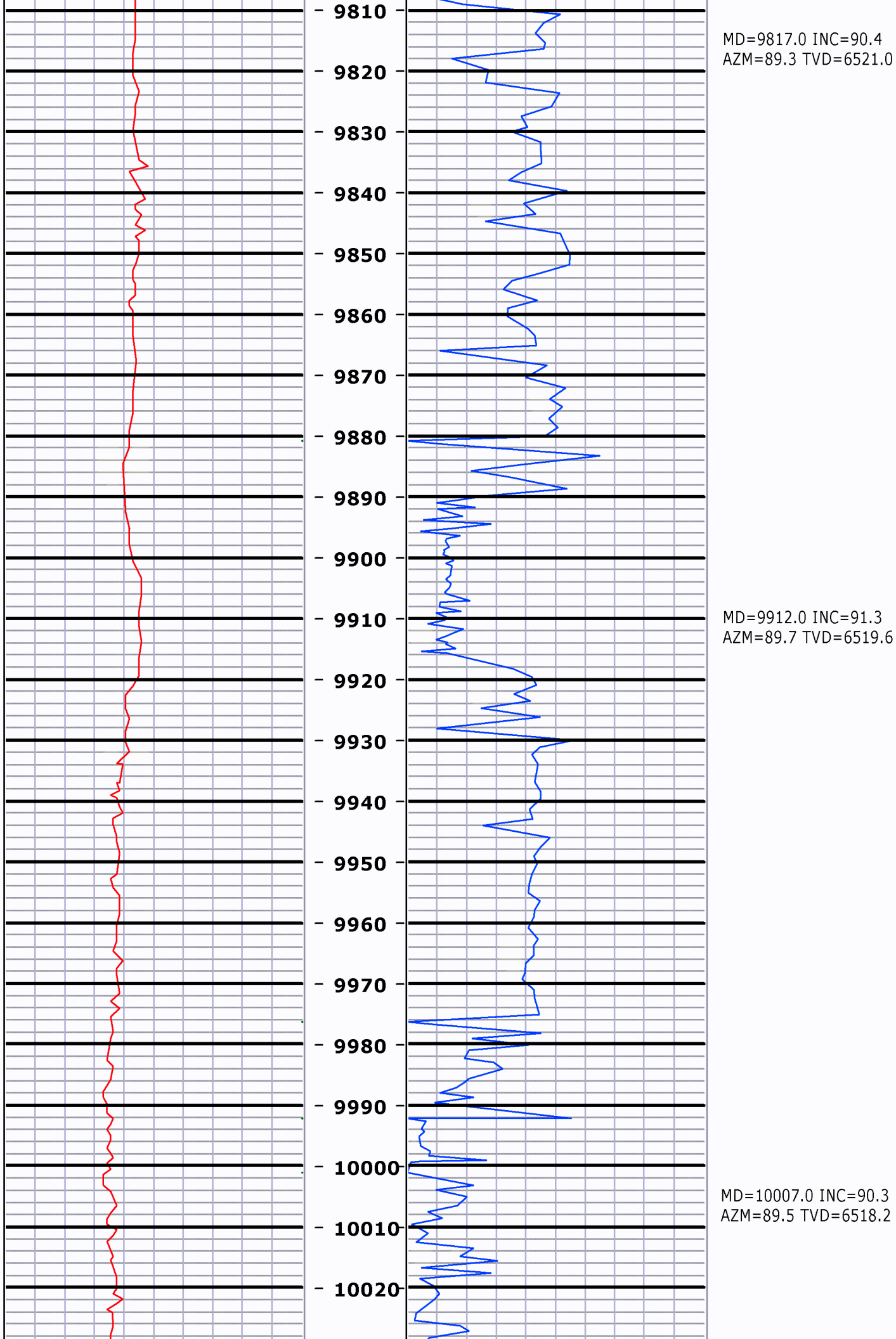
MD=9432.0 INC=88.9
AZM=90.0 TVD=6520.9

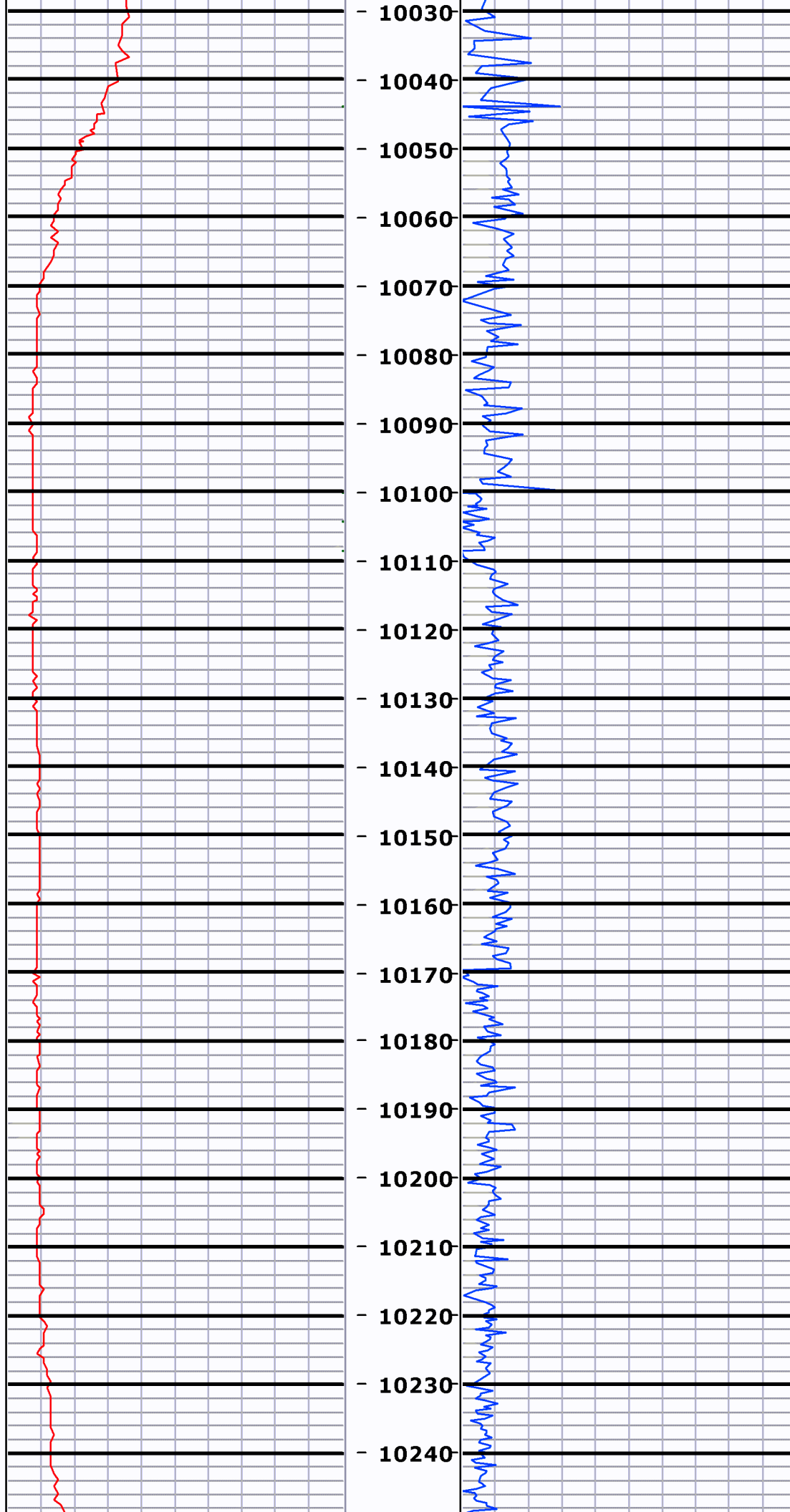
MD=9529.0 INC=89.4
AZM=90.2 TVD=6522.3



MD=9624.0 INC=89.5
AZM=90.0 TVD=6523.2

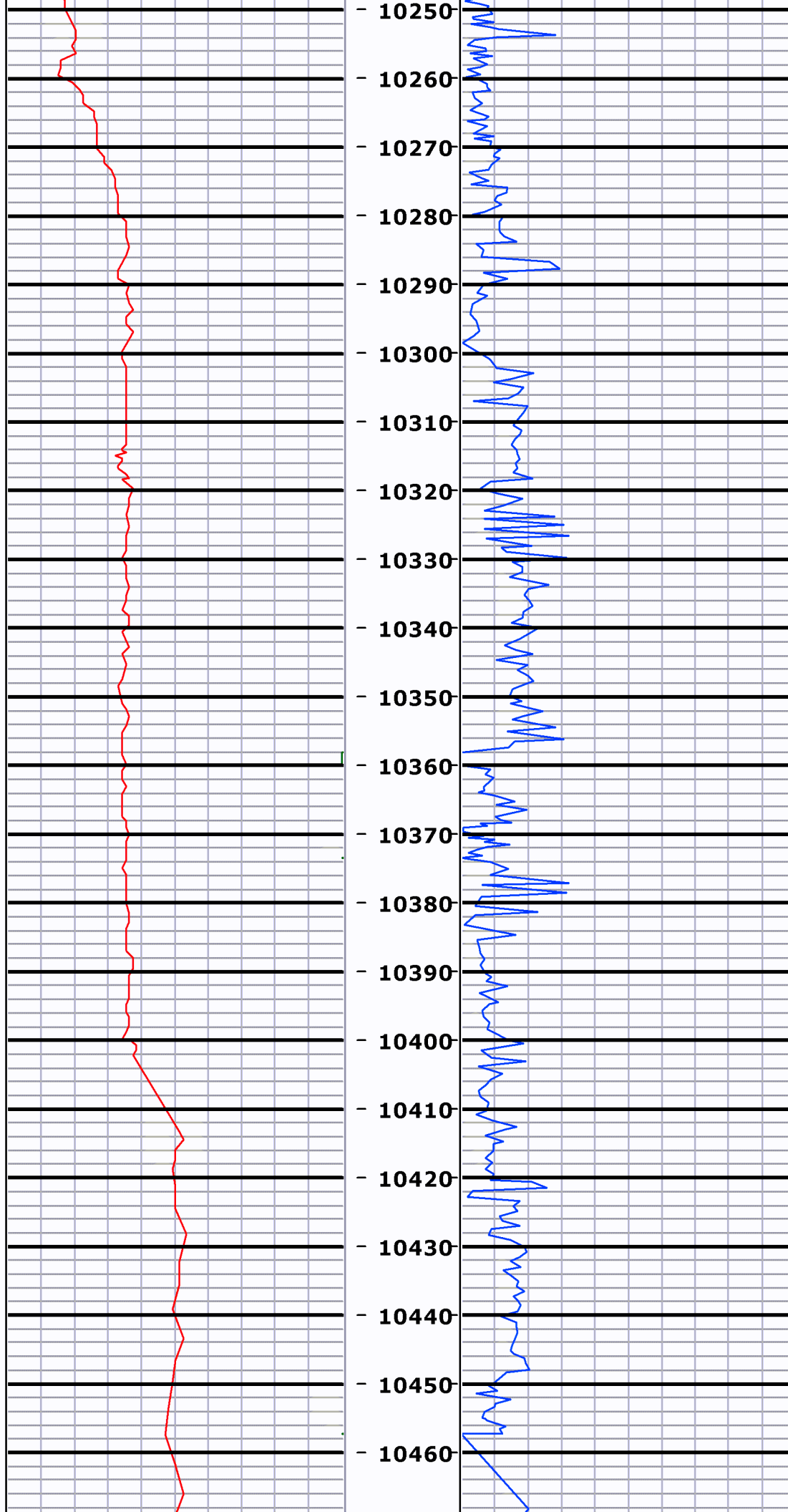
MD=9721.0 INC=91.4
AZM=90.0 TVD=6522.5





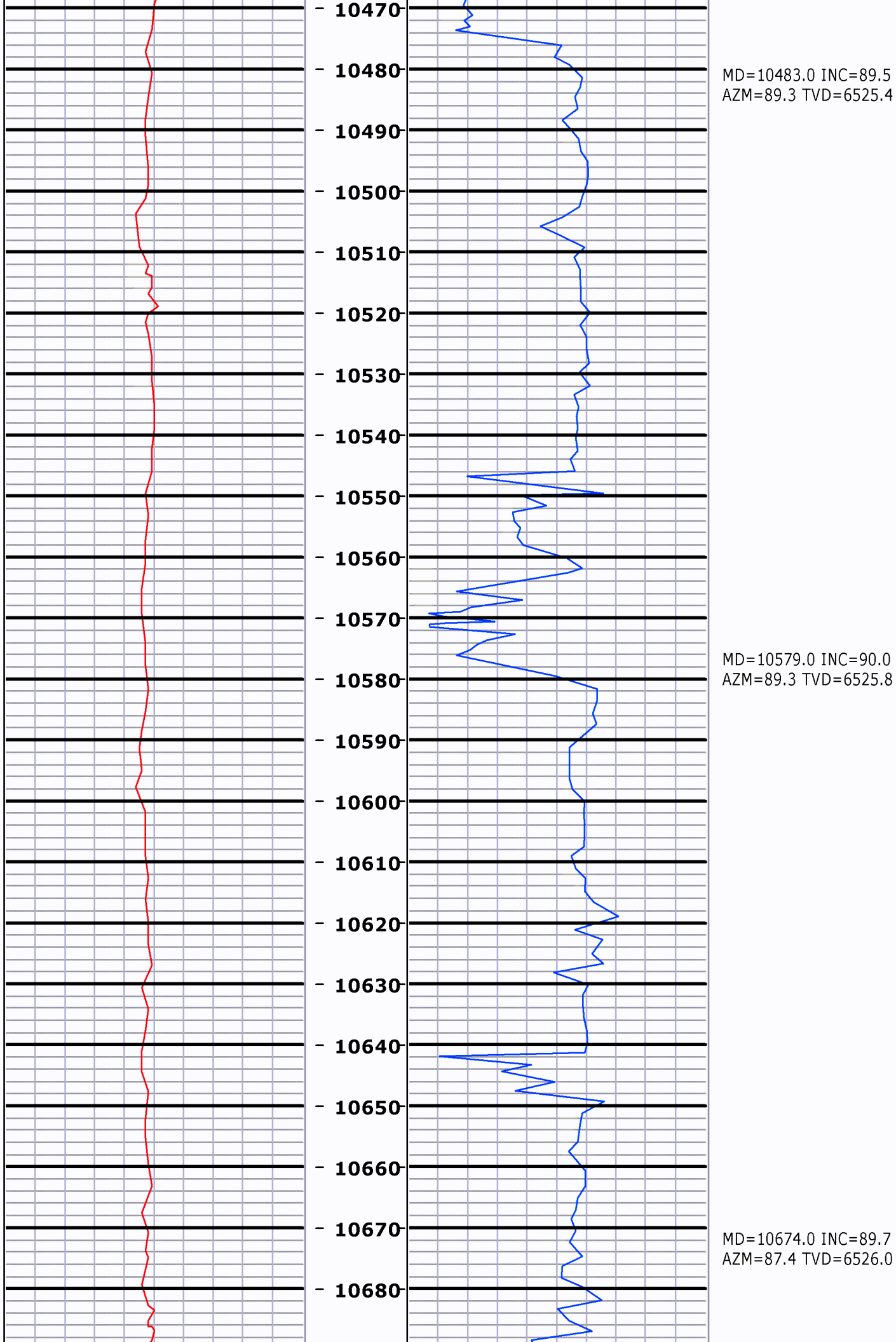
MD=10103.0 INC=89.5
AZM=89.3 TVD=6518.4

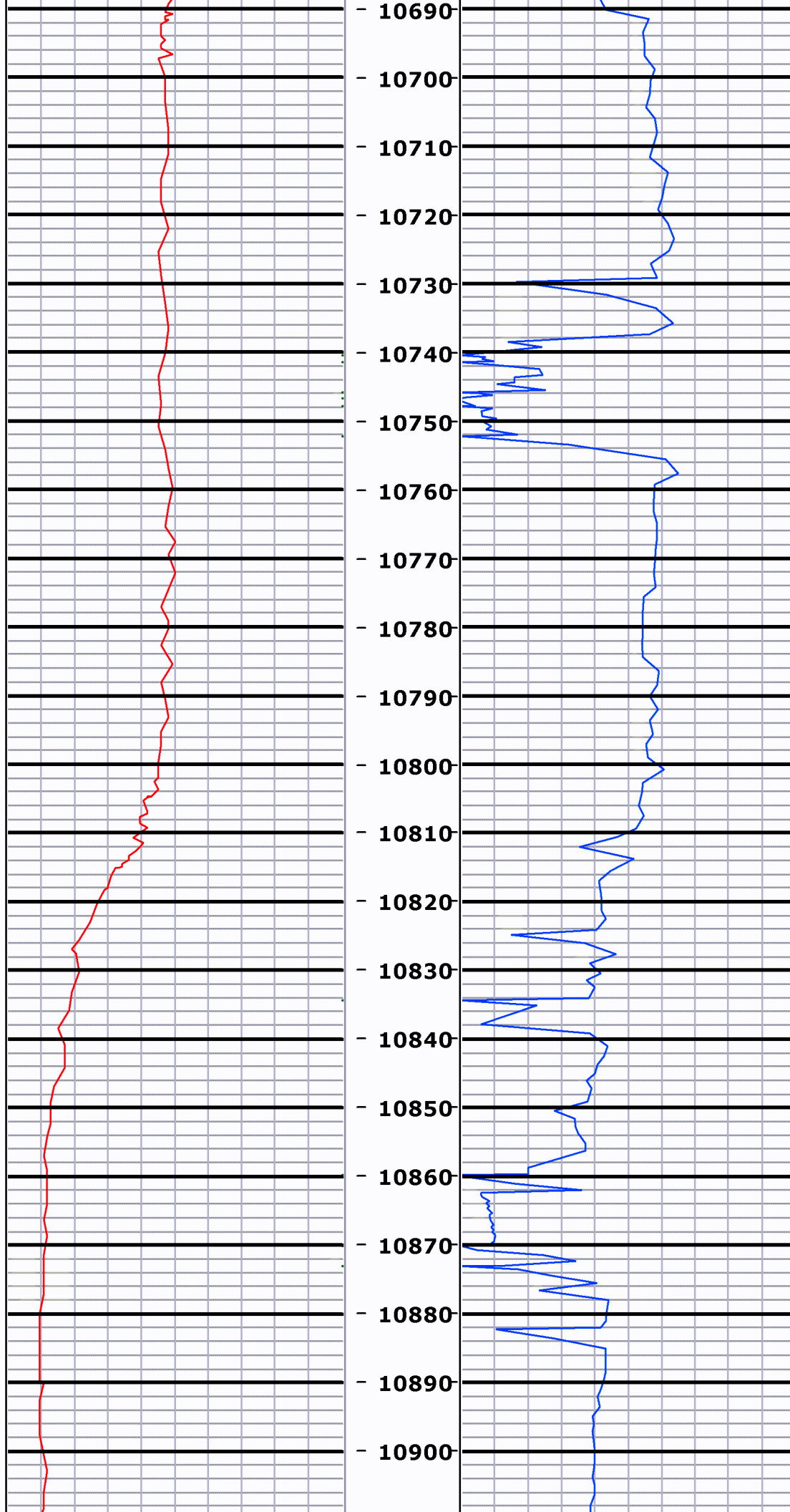
MD=10198.0 INC=89.0
AZM=90.9 TVD=6519.6



MD=10293.0 INC=88.4
AZM=90.3 TVD=6521.8

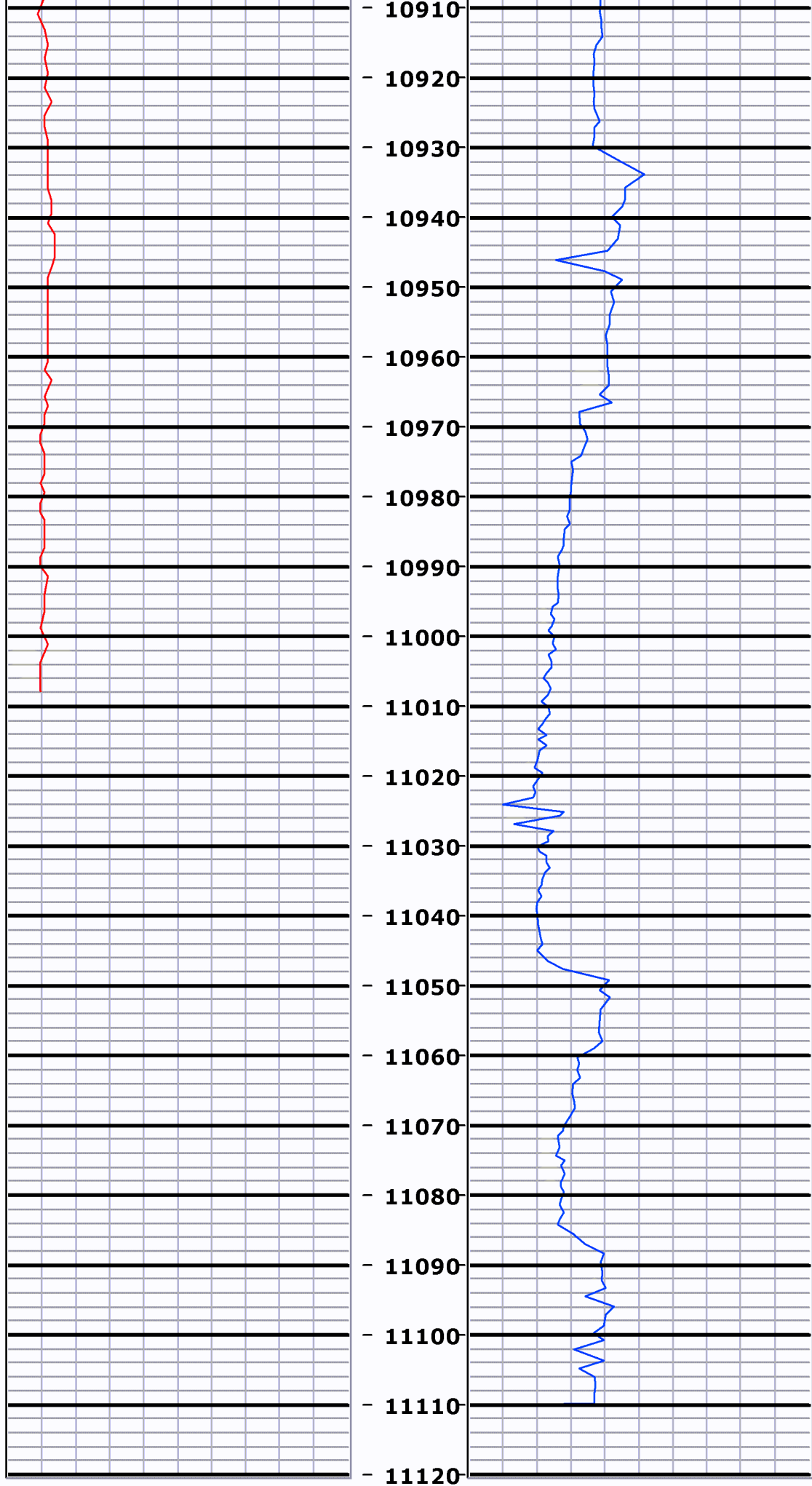
MD=10389.0 INC=88.9
AZM=88.6 TVD=6524.1





MD=10770.0 INC=89.5
AZM=86.3 TVD=6526.7


MD=10865.0 INC=88.7
AZM=84.6 TVD=6528.2



Gamma [AAPG] 200

ROP [ft per hr] 500

0	Gamma [AAPI]	200	Feet	0	ROP [ft per hr]	500
200.1	Gamma [AAPI]	400	5":100'			
0	ROP [ft per hr]	0	MD			

	Client:	Bonanza Creek			
	Well Name:	N. Platte 11-41-33HC			
	API/UWI:	05-123-39906-00			
	Well Lic:		GDAT:	0	
	Surface LSD:		KB:	4586.00	
	State/Prov:	Colorado	Job #:	2009-381-2	GL: 4569
	Country:	USA	MWD Kit:	DF:	4586