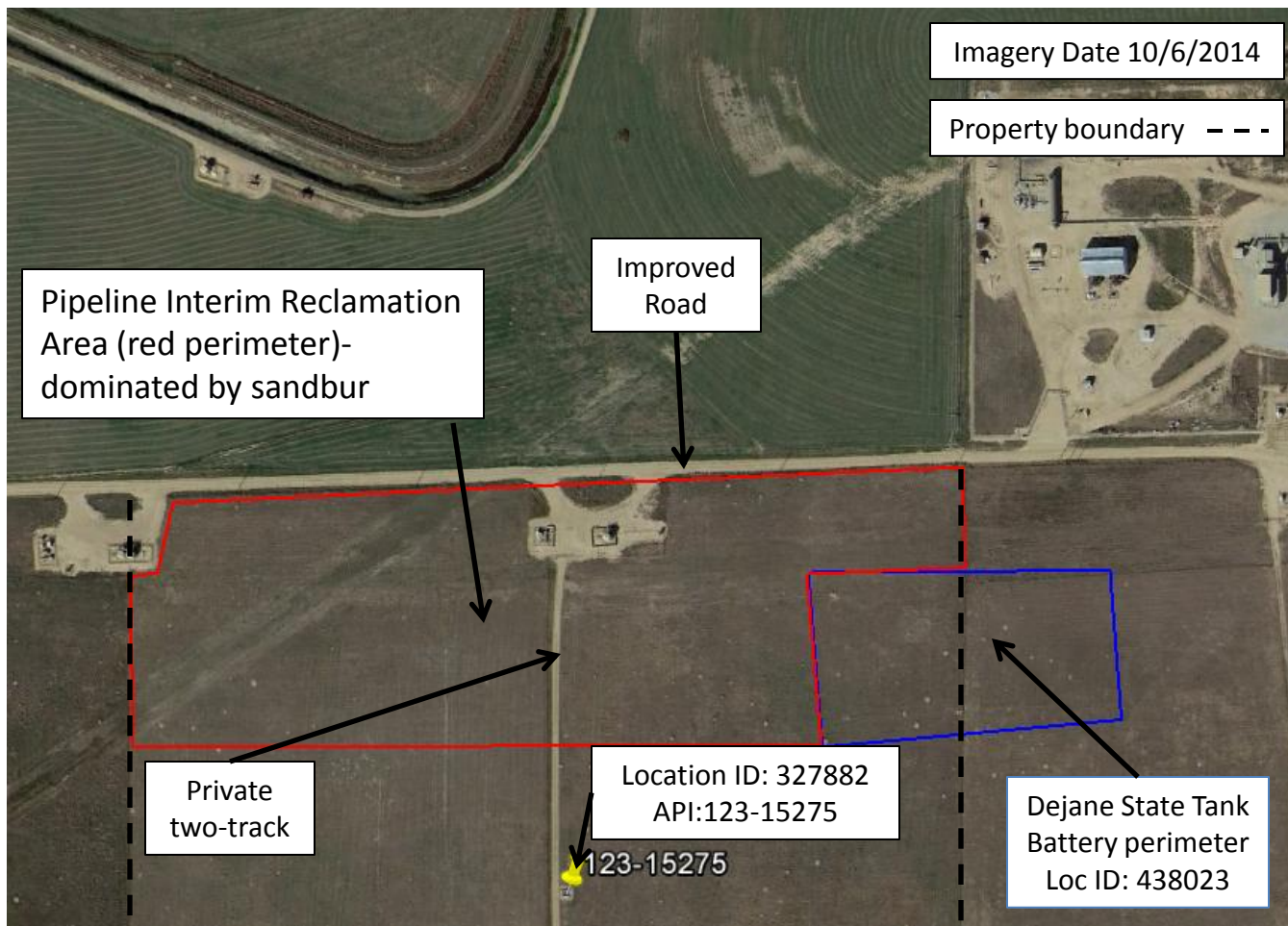


Complaint #200438020



Pipeline interim reclamation, highlighted in red, is the area of concern. The red perimeter is also a fence line (see attached photos). Approximately 11.0 acres of disturbed land has not met reclamation standards per 1003 Rule series. The disturbed area has not been treated to prevent invasion of undesirable plant species, in this case longspine sandbur (*Cenchrus longispinus*) dominates the entire vegetative community. Refer to photos 1-6 indicating sandbur infestation.

Complaint #200438020



Photo 1. Photo taken from private two-track, facing West within the pipeline interim reclamation area. The area west of the private two-track has been overtaken by sandbur. Very little to no perennial vegetation has established. This area can no longer be used for hay production and livestock grazing.

Complaint #200438020



Photo 2. Photo taken from private two-track, facing South. Sandbur is the dominant plant species with no vegetative growth in areas.

Dejane State Tank Battery



Photo 3. Photo taken from private two-track, facing East within the pipeline interim reclamation area. The area East of the private two-track has been overtaken by sandbur. Very little to no perennial vegetation has established. This area can no longer be used for hay production and livestock grazing.

Improved Road

Complaint #200438020



Photo 4. Photo taken from western pipeline interim reclamation area, facing North within the pipeline interim reclamation area. Sandbur is the dominant plant species with little to no perennial vegetation.

Complaint #200438020



Photo 5. Photo taken from western pipeline interim reclamation area, facing East within the pipeline interim reclamation area. Sandbur is the dominant plant species with little to no perennial vegetation.



Photo 6. Close-up photo of longspine sandbur.