



CARRIZO

CARRIZO OIL & GAS, INC.

Field: Niobrara CONZ'83

Site: Nelson 2-17-9-60 Pad

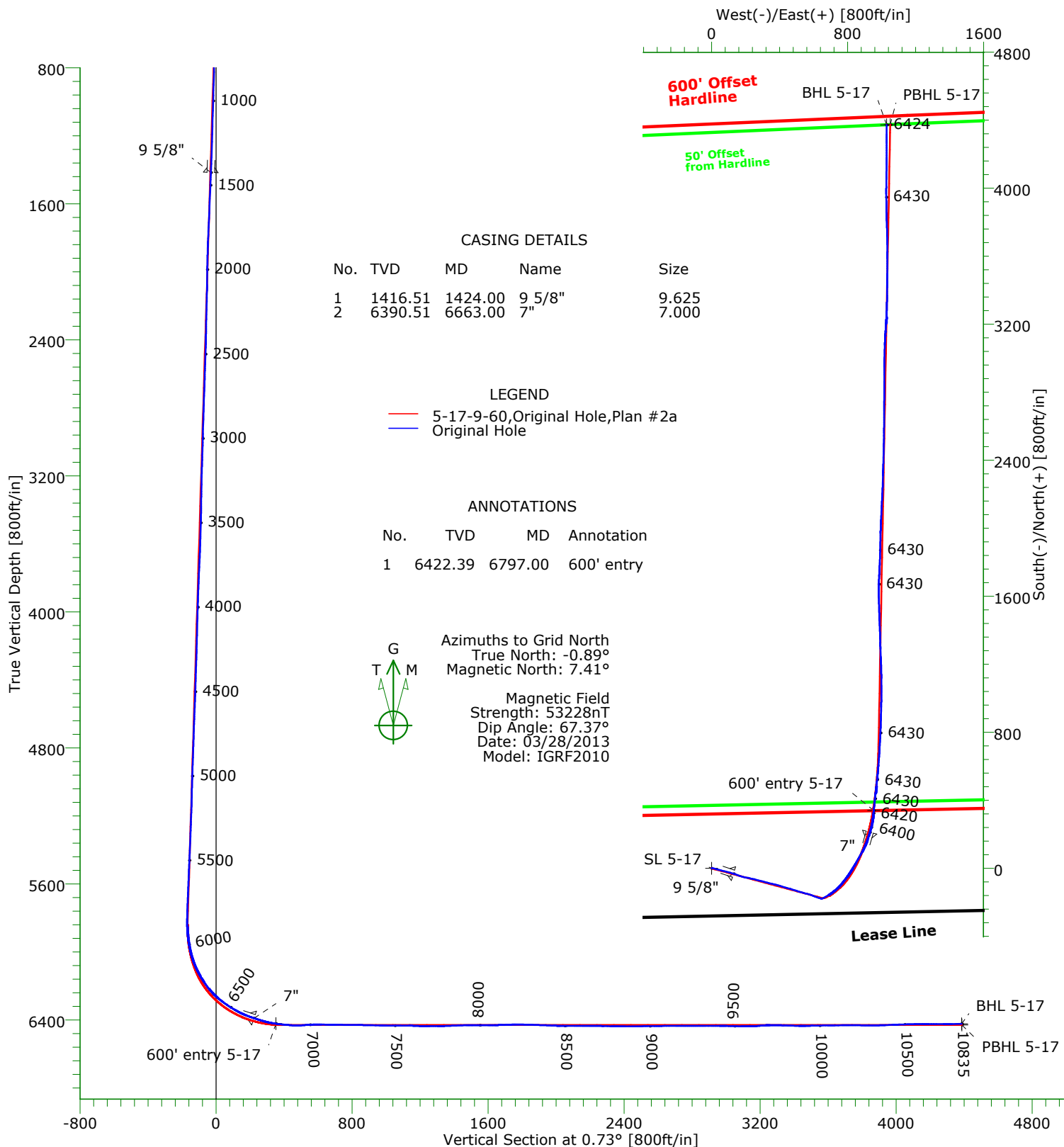
Well: 5-17-9-60

Wellpath: Original Hole



Precision

Directional Services



CASING DETAILS

No.	TVD	MD	Name	Size
1	1416.51	1424.00	9 5/8"	9.625
2	6390.51	6663.00	7"	7.000

LEGEND

- 5-17-9-60, Original Hole, Plan #2a
- Original Hole

ANNOTATIONS

No.	TVD	MD	Annotation
1	6422.39	6797.00	600' entry



Azimuths to Grid North
True North: -0.89°
Magnetic North: 7.41°

Magnetic Field
Strength: 53228nT
Dip Angle: 67.37°
Date: 03/28/2013
Model: IGRF2010

Name	TVD	+N/-S	+E/-W	Northing	Easting	Latitude	Longitude	Shape
SL 5-17	0.00	0.00	0.00	1516480.01	3382051.17	40°44'34.673N	104°07'16.417W	Point
600' entry 5-17	6422.39	340.16	953.55	1516820.17	3383004.72	40°44'37.887N	104°07'03.962W	Point
BHL 5-17	6423.62	4373.31	1029.20	1520853.32	3383080.37	40°45'17.722N	104°07'02.162W	Point
PBHL 5-17	6430.00	4374.18	1050.48	1520854.19	3383101.65	40°45'17.728N	104°07'01.885W	Point

Precision Directional Services, Inc.

Survey Report

Company: CARRIZO OIL & GAS, INC. Field: Niobrara CONZ'83 Site: Nelson 2-17-9-60 Pad Well: 5-17-9-60 Wellpath: Original Hole	Date: 04/02/2013 Co-ordinate(NE) Reference: Well: 5-17-9-60, Grid North Vertical (TVD) Reference: 4991'GL+17'KB 4508.0 Section (VS) Reference: Well (0.00N,0.00E,0.73Azi) Survey Calculation Method: Minimum Curvature	Time: 08:01:04 Page: 1	Db: Adapti
--	---	---	-------------------

Field: Niobrara CONZ'83			
Map System: US State Plane Coordinate System 1983		Map Zone: Colorado, Northern Zone	
Geo Datum: GRS 1980		Coordinate System: Well Centre	
Sys Datum: Mean Sea Level		Geomagnetic Model: IGRF2010	

Site: Nelson 2-17-9-60 Pad			
Weld County, CO			
Site Position:	Northing: 1516469.00 ft	Latitude: 40 44 34.562 N	
From: Map	Easting: 3382061.35 ft	Longitude: 104 7 16.287 W	
Position Uncertainty: 0.00 ft		North Reference: Grid	
Ground Level: 4991.00 ft		Grid Convergence: 0.89 deg	

Well: 5-17-9-60 centered on 2-17		Slot Name: 5-17	
Well Position: +N/-S 11.01 ft	Northing: 1516480.01 ft	Latitude: 40 44 34.673 N	
+E/-W -10.18 ft	Easting : 3382051.17 ft	Longitude: 104 7 16.417 W	
Position Uncertainty: 0.00 ft			

Wellpath: Original Hole		Drilled From: Surface	
Current Datum: 4991'GL+17'KB	Height 4508.00 ft	Tie-on Depth: 0.00 ft	
Magnetic Data: 03/28/2013		Above System Datum: Mean Sea Level	
Field Strength: 53228 nT		Declination: 8.30 deg	
Vertical Section: Depth From (TVD)	+N/-S	Mag Dip Angle: 67.37 deg	
ft	ft	+E/-W	Direction
		ft	deg
0.00	0.00	0.00	0.73

Survey Program for Definitive Wellpath			
Date: 04/02/2013	Validated: No	Version: 0	
Actual From To	Survey	Toolcode	Tool Name
ft ft			
134.00 10778.00	Survey #1 (134.00-10778.00)	MWD	Std MWD
10835.00 10835.00	Survey #2 (10835.00-10835.00)	Project	Projection

Survey										
MD	Incl	Azim	TVD	+N/-S	+E/-W	VS	DLS	Build	Turn	Tool/Comment
ft	deg	deg	ft	ft	ft	ft	deg/100ft	deg/100ft	deg/100ft	
0.00	0.00	0.00	0.00	0.00	0.00	0.00	0.00	0.00	0.00	TIE LINE
134.00	0.50	30.50	134.00	0.50	0.30	0.51	0.37	0.37	0.00	MWD
228.00	2.40	90.00	227.97	0.86	2.47	0.89	2.33	2.02	63.30	MWD
321.00	3.80	95.00	320.83	0.59	7.49	0.68	1.53	1.51	5.38	MWD
415.00	5.60	105.00	414.51	-0.87	15.02	-0.68	2.10	1.91	10.64	MWD
507.00	6.20	104.60	506.02	-3.28	24.17	-2.98	0.65	0.65	-0.43	MWD
599.00	6.20	104.50	597.48	-5.78	33.79	-5.35	0.01	0.00	-0.11	MWD
691.00	6.60	105.50	688.91	-8.44	43.69	-7.88	0.45	0.43	1.09	MWD
783.00	6.80	104.30	780.28	-11.20	54.06	-10.51	0.27	0.22	-1.30	MWD
875.00	6.90	105.50	871.63	-14.02	64.67	-13.19	0.19	0.11	1.30	MWD
967.00	7.00	103.40	962.95	-16.79	75.44	-15.83	0.30	0.11	-2.28	MWD
1058.00	7.10	104.10	1053.26	-19.45	86.29	-18.35	0.14	0.11	0.77	MWD
1150.00	6.90	105.70	1144.58	-22.33	97.13	-21.09	0.30	-0.22	1.74	MWD
1242.00	7.00	104.30	1235.90	-25.21	107.88	-23.83	0.21	0.11	-1.52	MWD
1334.00	7.00	106.20	1327.21	-28.16	118.70	-26.64	0.25	0.00	2.07	MWD
1373.00	7.10	107.60	1365.92	-29.55	123.28	-27.98	0.51	0.26	3.59	MWD
1452.00	7.50	108.10	1444.28	-32.63	132.83	-30.93	0.51	0.51	0.63	MWD
1495.00	7.70	108.50	1486.90	-34.41	138.23	-32.65	0.48	0.47	0.93	MWD
1580.00	7.60	109.00	1571.14	-38.05	148.94	-36.15	0.14	-0.12	0.59	MWD
1665.00	7.70	108.50	1655.39	-41.69	159.66	-39.65	0.14	0.12	-0.59	MWD
1750.00	7.50	109.50	1739.64	-45.35	170.29	-43.17	0.28	-0.24	1.18	MWD
1835.00	7.20	110.40	1823.94	-49.05	180.51	-46.75	0.38	-0.35	1.06	MWD

Precision Directional Services, Inc.

Survey Report

Company: CARRIZO OIL & GAS, INC. Field: Niobrara CONZ'83 Site: Nelson 2-17-9-60 Pad Well: 5-17-9-60 Wellpath: Original Hole	Date: 04/02/2013 Co-ordinate(NE) Reference: Well: 5-17-9-60, Grid North Vertical (TVD) Reference: 4991'GL+17'KB 4508.0 Section (VS) Reference: Well (0.00N,0.00E,0.73Azi) Survey Calculation Method: Minimum Curvature	Time: 08:01:04 Page: 2 Db: Adapti
--	---	--

Survey

MD ft	Incl deg	Azim deg	TVD ft	+N/-S ft	+E/-W ft	VS ft	DLS deg/100ft	Build deg/100ft	Turn deg/100ft	Tool/Comment
1921.00	7.80	100.20	1909.21	-51.97	191.31	-49.53	1.70	0.70	-11.86	MWD
2005.00	6.80	97.90	1992.53	-53.66	201.84	-51.08	1.24	-1.19	-2.74	MWD
2090.00	6.80	97.80	2076.93	-55.03	211.81	-52.33	0.01	0.00	-0.12	MWD
2124.00	6.50	103.60	2110.70	-55.76	215.68	-53.01	2.16	-0.88	17.06	MWD
2209.00	6.20	104.40	2195.18	-58.03	224.80	-55.16	0.37	-0.35	0.94	MWD
2294.00	6.00	102.30	2279.70	-60.12	233.58	-57.14	0.35	-0.24	-2.47	MWD
2379.00	5.50	99.30	2364.27	-61.73	241.94	-58.64	0.69	-0.59	-3.53	MWD
2464.00	7.70	104.80	2448.70	-63.84	251.47	-60.63	2.69	2.59	6.47	MWD
2548.00	7.70	105.10	2531.95	-66.74	262.35	-63.39	0.05	0.00	0.36	MWD
2634.00	8.30	102.70	2617.11	-69.61	273.96	-66.11	0.80	0.70	-2.79	MWD
2719.00	7.50	105.80	2701.30	-72.47	285.29	-68.83	1.07	-0.94	3.65	MWD
2804.00	7.70	106.70	2785.56	-75.61	296.08	-71.84	0.27	0.24	1.06	MWD
2889.00	6.90	103.60	2869.87	-78.45	306.50	-74.54	1.05	-0.94	-3.65	MWD
2974.00	7.10	102.70	2954.23	-80.81	316.58	-76.77	0.27	0.24	-1.06	MWD
3059.00	6.70	105.00	3038.62	-83.24	326.50	-79.08	0.57	-0.47	2.71	MWD
3145.00	7.00	108.30	3124.00	-86.19	336.32	-81.90	0.58	0.35	3.84	MWD
3230.00	6.00	102.70	3208.46	-88.79	345.57	-84.38	1.39	-1.18	-6.59	MWD
3315.00	5.90	101.60	3293.00	-90.65	354.18	-86.13	0.18	-0.12	-1.29	MWD
3401.00	5.60	96.40	3378.57	-92.00	362.68	-87.37	0.70	-0.35	-6.05	MWD
3486.00	6.60	104.80	3463.09	-93.71	371.53	-88.97	1.57	1.18	9.88	MWD
3571.00	6.60	105.10	3547.52	-96.23	380.97	-91.37	0.04	0.00	0.35	MWD
3656.00	7.30	106.40	3631.90	-99.03	390.86	-94.04	0.84	0.82	1.53	MWD
3741.00	8.20	108.50	3716.12	-102.48	401.79	-97.35	1.11	1.06	2.47	MWD
3826.00	8.40	106.70	3800.23	-106.19	413.49	-100.91	0.39	0.24	-2.12	MWD
3912.00	7.70	109.40	3885.38	-109.91	424.94	-104.48	0.92	-0.81	3.14	MWD
3997.00	6.70	104.30	3969.71	-113.02	435.12	-107.47	1.40	-1.18	-6.00	MWD
4082.00	6.40	100.60	4054.16	-115.12	444.58	-109.44	0.61	-0.35	-4.35	MWD
4167.00	6.40	106.70	4138.63	-117.35	453.77	-111.56	0.80	0.00	7.18	MWD
4252.00	6.00	105.50	4223.13	-119.90	462.59	-114.00	0.49	-0.47	-1.41	MWD
4338.00	6.60	110.80	4308.61	-122.86	471.54	-116.84	0.97	0.70	6.16	MWD
4423.00	6.20	103.70	4393.08	-125.68	480.57	-119.54	1.04	-0.47	-8.35	MWD
4507.00	6.60	106.90	4476.56	-128.15	489.59	-121.91	0.64	0.48	3.81	MWD
4592.00	7.50	109.50	4560.92	-131.43	499.50	-125.05	1.12	1.06	3.06	MWD
4677.00	7.00	109.00	4645.24	-134.96	509.62	-128.46	0.59	-0.59	-0.59	MWD
4762.00	6.70	104.80	4729.63	-137.92	519.31	-131.29	0.69	-0.35	-4.94	MWD
4848.00	7.60	106.70	4814.96	-140.83	529.61	-134.07	1.08	1.05	2.21	MWD
4932.00	7.40	106.70	4898.24	-143.98	540.11	-137.09	0.24	-0.24	0.00	MWD
5017.00	6.90	104.40	4982.58	-146.83	550.30	-139.80	0.68	-0.59	-2.71	MWD
5102.00	6.00	103.00	5067.04	-149.10	559.58	-141.95	1.07	-1.06	-1.65	MWD
5187.00	6.90	105.80	5151.51	-151.49	568.82	-144.23	1.12	1.06	3.29	MWD
5271.00	7.30	109.20	5234.86	-154.61	578.71	-147.23	0.69	0.48	4.05	MWD
5357.00	6.90	108.30	5320.20	-158.03	588.78	-150.52	0.48	-0.47	-1.05	MWD
5442.00	6.90	112.50	5404.59	-161.59	598.34	-153.95	0.59	0.00	4.94	MWD
5527.00	6.40	113.20	5489.01	-165.41	607.41	-157.66	0.60	-0.59	0.82	MWD
5612.00	7.00	107.60	5573.43	-168.84	616.71	-160.97	1.04	0.71	-6.59	MWD
5697.00	8.20	108.50	5657.69	-172.33	627.39	-164.33	1.42	1.41	1.06	MWD
5783.00	6.90	107.40	5742.94	-175.82	638.14	-167.68	1.52	-1.51	-1.28	MWD
5809.00	6.30	105.70	5768.77	-176.68	641.00	-168.50	2.43	-2.31	-6.54	MWD
5845.00	5.70	105.70	5804.57	-177.70	644.62	-169.47	1.67	-1.67	0.00	MWD
5887.00	6.20	78.40	5846.35	-177.80	648.85	-169.52	6.77	1.19	-65.00	MWD
5930.00	10.30	64.50	5888.90	-175.68	654.60	-167.33	10.54	9.53	-32.33	MWD
5972.00	15.50	61.60	5929.83	-171.39	662.93	-162.93	12.47	12.38	-6.90	MWD
6015.00	20.10	60.10	5970.76	-164.97	674.40	-156.37	10.75	10.70	-3.49	MWD

Precision Directional Services, Inc.

Survey Report

Company: CARRIZO OIL & GAS, INC.	Date: 04/02/2013	Time: 08:01:04	Page: 3
Field: Niobrara CONZ'83	Co-ordinate(NE) Reference: Well: 5-17-9-60, Grid North		
Site: Nelson 2-17-9-60 Pad	Vertical (TVD) Reference: 4991'GL+17"KB 4508.0		
Well: 5-17-9-60	Section (VS) Reference: Well (0.00N,0.00E,0.73Azi)		
Wellpath: Original Hole	Survey Calculation Method: Minimum Curvature		Db: Adapti

Survey

MD ft	Incl deg	Azim deg	TVD ft	+N/-S ft	+E/-W ft	VS ft	DLS deg/100ft	Build deg/100ft	Turn deg/100ft	Tool/Comment
6057.00	24.90	57.20	6009.55	-156.58	688.10	-147.80	11.73	11.43	-6.90	MWD
6100.00	29.70	54.00	6047.75	-145.41	704.33	-136.42	11.67	11.16	-7.44	MWD
6143.00	33.90	51.40	6084.29	-131.66	722.33	-122.45	10.27	9.77	-6.05	MWD
6185.00	37.10	46.60	6118.49	-115.64	740.70	-106.19	10.10	7.62	-11.43	MWD
6228.00	39.00	41.20	6152.36	-96.54	759.04	-86.86	8.91	4.42	-12.56	MWD
6271.00	41.60	38.30	6185.15	-75.15	776.80	-65.25	7.45	6.05	-6.74	MWD
6313.00	43.60	36.60	6216.07	-52.58	794.08	-42.46	5.49	4.76	-4.05	MWD
6356.00	48.50	33.60	6245.90	-27.25	811.85	-16.90	12.45	11.40	-6.98	MWD
6399.00	54.60	31.80	6272.63	1.09	830.01	11.66	14.56	14.19	-4.19	MWD
6441.00	57.90	30.80	6295.96	30.92	848.14	41.73	8.10	7.86	-2.38	MWD
6484.00	60.10	29.20	6318.11	62.84	866.57	73.88	6.03	5.12	-3.72	MWD
6527.00	61.70	27.60	6339.02	95.89	884.43	107.15	4.94	3.72	-3.72	MWD
6569.00	65.20	24.30	6357.80	129.67	900.85	141.14	10.90	8.33	-7.86	MWD
6609.00	69.90	19.90	6373.07	163.91	914.73	175.55	15.53	11.75	-11.00	MWD
6653.00	72.00	16.90	6387.44	203.37	927.85	215.18	8.02	4.77	-6.82	MWD
6686.00	72.70	14.30	6397.44	233.66	936.30	245.57	7.80	2.12	-7.88	MWD
6728.00	74.70	9.70	6409.24	273.07	944.67	285.09	11.54	4.76	-10.95	MWD
6771.00	80.50	6.70	6418.47	314.62	950.65	326.71	15.11	13.49	-6.98	MWD
6797.00	82.17	6.27	6422.39	340.16	953.55	352.28	6.64	6.43	-1.67	600' entry
6813.00	83.20	6.00	6424.42	355.94	955.24	368.08	6.64	6.43	-1.66	MWD
6856.00	84.60	5.80	6428.99	398.47	959.64	410.66	3.29	3.26	-0.47	MWD
6898.00	86.30	6.40	6432.32	440.10	964.09	452.34	4.29	4.05	1.43	MWD
6941.00	93.00	6.50	6432.59	482.80	968.92	495.10	15.58	15.58	0.23	MWD
6984.00	94.40	6.20	6429.81	525.44	973.66	537.81	3.33	3.26	-0.70	MWD
7026.00	91.40	5.10	6427.69	567.18	977.79	579.59	7.61	-7.14	-2.62	MWD
7069.00	88.70	4.60	6427.65	610.02	981.42	622.48	6.39	-6.28	-1.16	MWD
7111.00	88.60	4.10	6428.64	651.89	984.61	664.38	1.21	-0.24	-1.19	MWD
7154.00	90.00	3.40	6429.16	694.79	987.42	707.32	3.64	3.26	-1.63	MWD
7196.00	89.50	3.20	6429.35	736.72	989.84	749.27	1.28	-1.19	-0.48	MWD
7239.00	89.30	2.70	6429.80	779.66	992.05	792.24	1.25	-0.47	-1.16	MWD
7280.00	89.40	2.30	6430.26	820.62	993.84	833.22	1.01	0.24	-0.98	MWD
7323.00	89.00	1.60	6430.86	863.59	995.30	876.20	1.87	-0.93	-1.63	MWD
7365.00	88.50	1.40	6431.78	905.57	996.40	918.19	1.28	-1.19	-0.48	MWD
7408.00	88.40	1.30	6432.94	948.54	997.42	961.17	0.33	-0.23	-0.23	MWD
7451.00	90.00	0.70	6433.54	991.53	998.17	1004.16	3.97	3.72	-1.40	MWD
7493.00	90.20	0.20	6433.47	1033.53	998.50	1046.16	1.28	0.48	-1.19	MWD
7536.00	89.50	359.70	6433.58	1076.53	998.46	1089.16	2.00	-1.63	-1.16	MWD
7578.00	89.20	359.70	6434.06	1118.52	998.24	1131.15	0.71	-0.71	0.00	MWD
7621.00	87.60	358.80	6435.26	1161.50	997.68	1174.12	4.27	-3.72	-2.09	MWD
7663.00	88.80	358.10	6436.58	1203.46	996.54	1216.06	3.31	2.86	-1.67	MWD
7706.00	90.40	357.70	6436.88	1246.43	994.96	1259.01	3.84	3.72	-0.93	MWD
7749.00	90.00	357.70	6436.73	1289.40	993.24	1301.95	0.93	-0.93	0.00	MWD
7791.00	91.80	358.40	6436.07	1331.37	991.81	1343.89	4.60	4.29	1.67	MWD
7834.00	92.40	358.10	6434.49	1374.32	990.50	1386.82	1.56	1.40	-0.70	MWD
7876.00	92.00	357.70	6432.88	1416.26	988.96	1428.74	1.35	-0.95	-0.95	MWD
7919.00	91.50	357.90	6431.57	1459.20	987.31	1471.67	1.25	-1.16	0.47	MWD
7962.00	90.30	358.80	6430.89	1502.18	986.07	1514.62	3.49	-2.79	2.09	MWD
8004.00	89.40	358.10	6431.00	1544.16	984.94	1556.59	2.71	-2.14	-1.67	MWD
8047.00	90.00	358.40	6431.23	1587.14	983.62	1599.55	1.56	1.40	0.70	MWD
8089.00	90.60	359.90	6431.01	1629.14	983.00	1641.53	3.85	1.43	3.57	MWD
8132.00	92.10	1.80	6429.99	1672.12	983.64	1684.51	5.63	3.49	4.42	MWD
8175.00	92.20	2.80	6428.38	1715.05	985.36	1727.47	2.34	0.23	2.33	MWD
8217.00	90.00	3.00	6427.57	1756.99	987.49	1769.43	5.26	-5.24	0.48	MWD
8260.00	88.80	2.00	6428.02	1799.94	989.36	1812.40	3.63	-2.79	-2.33	MWD

Precision Directional Services, Inc.

Survey Report

Company: CARRIZO OIL & GAS, INC. Field: Niobrara CONZ'83 Site: Nelson 2-17-9-60 Pad Well: 5-17-9-60 Wellpath: Original Hole	Date: 04/02/2013 Time: 08:01:04 Page: 4 Co-ordinate(NE) Reference: Well: 5-17-9-60, Grid North Vertical (TVD) Reference: 4991'GL+17"KB 4508.0 Section (VS) Reference: Well (0.00N,0.00E,0.73Azi) Survey Calculation Method: Minimum Curvature Db: Adapti
--	--

Survey

MD ft	Incl deg	Azim deg	TVD ft	+N/-S ft	+E/-W ft	VS ft	DLS deg/100ft	Build deg/100ft	Turn deg/100ft	Tool/Comment
8303.00	88.30	1.80	6429.11	1842.91	990.79	1855.38	1.25	-1.16	-0.47	MWD
8345.00	88.10	1.30	6430.43	1884.87	991.92	1897.35	1.28	-0.48	-1.19	MWD
8388.00	87.80	0.90	6431.97	1927.83	992.75	1940.33	1.16	-0.70	-0.93	MWD
8431.00	87.20	1.30	6433.85	1970.78	993.57	1983.28	1.68	-1.40	0.93	MWD
8473.00	89.40	2.50	6435.09	2012.74	994.96	2025.25	5.97	5.24	2.86	MWD
8516.00	90.40	3.00	6435.17	2055.69	997.03	2068.23	2.60	2.33	1.16	MWD
8558.00	90.40	2.50	6434.87	2097.64	999.04	2110.20	1.19	0.00	-1.19	MWD
8601.00	90.00	2.80	6434.72	2140.59	1001.03	2153.17	1.16	-0.93	0.70	MWD
8643.00	89.40	3.40	6434.94	2182.53	1003.30	2195.14	2.02	-1.43	1.43	MWD
8686.00	89.30	2.30	6435.43	2225.47	1005.44	2238.10	2.57	-0.23	-2.56	MWD
8728.00	88.40	1.40	6436.27	2267.44	1006.79	2280.09	3.03	-2.14	-2.14	MWD
8771.00	88.20	1.40	6437.55	2310.41	1007.84	2323.06	0.47	-0.47	0.00	MWD
8814.00	90.10	2.10	6438.19	2353.38	1009.16	2366.05	4.71	4.42	1.63	MWD
8856.00	90.50	1.40	6437.97	2395.36	1010.44	2408.04	1.92	0.95	-1.67	MWD
8899.00	90.40	1.30	6437.63	2438.35	1011.45	2451.04	0.33	-0.23	-0.23	MWD
8941.00	90.20	1.10	6437.41	2480.34	1012.33	2493.04	0.67	-0.48	-0.48	MWD
8984.00	90.70	0.90	6437.07	2523.33	1013.08	2536.04	1.25	1.16	-0.47	MWD
9027.00	90.70	0.70	6436.55	2566.33	1013.68	2579.03	0.47	0.00	-0.47	MWD
9069.00	90.50	0.40	6436.11	2608.32	1014.09	2621.03	0.86	-0.48	-0.71	MWD
9112.00	90.40	0.60	6435.77	2651.32	1014.46	2664.03	0.52	-0.23	0.47	MWD
9155.00	90.40	0.40	6435.47	2694.32	1014.84	2707.03	0.47	0.00	-0.47	MWD
9197.00	90.00	0.60	6435.32	2736.31	1015.20	2749.03	1.06	-0.95	0.48	MWD
9240.00	90.30	0.00	6435.21	2779.31	1015.43	2792.02	1.56	0.70	-1.40	MWD
9281.00	89.90	0.40	6435.14	2820.31	1015.57	2833.02	1.38	-0.98	0.98	MWD
9324.00	90.00	0.00	6435.18	2863.31	1015.72	2876.02	0.96	0.23	-0.93	MWD
9366.00	89.80	0.00	6435.25	2905.31	1015.72	2918.02	0.48	-0.48	0.00	MWD
9409.00	89.90	359.70	6435.36	2948.31	1015.61	2961.01	0.74	0.23	-0.70	MWD
9452.00	88.90	1.80	6435.81	2991.30	1016.17	3004.01	5.41	-2.33	4.88	MWD
9494.00	88.60	1.60	6436.73	3033.27	1017.42	3045.99	0.86	-0.71	-0.48	MWD
9537.00	88.20	1.80	6437.93	3076.24	1018.69	3088.97	1.04	-0.93	0.47	MWD
9579.00	90.70	3.00	6438.33	3118.19	1020.45	3130.94	6.60	5.95	2.86	MWD
9622.00	93.90	3.90	6436.61	3161.08	1023.04	3173.85	7.73	7.44	2.09	MWD
9664.00	95.30	3.50	6433.24	3202.85	1025.74	3215.66	3.47	3.33	-0.95	MWD
9706.00	90.50	3.40	6431.11	3244.71	1028.26	3257.55	11.43	-11.43	-0.24	MWD
9748.00	89.10	2.10	6431.26	3286.66	1030.28	3299.52	4.55	-3.33	-3.10	MWD
9791.00	87.50	0.70	6432.54	3329.63	1031.33	3342.50	4.94	-3.72	-3.26	MWD
9834.00	88.30	0.20	6434.11	3372.60	1031.66	3385.47	2.19	1.86	-1.16	MWD
9876.00	88.60	0.00	6435.25	3414.58	1031.74	3427.45	0.86	0.71	-0.48	MWD
9919.00	91.30	1.60	6435.29	3457.57	1032.34	3470.44	7.30	6.28	3.72	MWD
9961.00	91.20	0.40	6434.37	3499.55	1033.07	3512.43	2.87	-0.24	-2.86	MWD
10004.00	91.00	0.60	6433.54	3542.54	1033.45	3555.42	0.66	-0.47	0.47	MWD
10047.00	90.80	0.40	6432.87	3585.54	1033.82	3598.42	0.66	-0.47	-0.47	MWD
10088.00	90.70	359.50	6432.33	3626.53	1033.79	3639.41	2.21	-0.24	-2.20	MWD
10131.00	90.50	359.50	6431.88	3669.53	1033.41	3682.40	0.47	-0.47	0.00	MWD
10173.00	90.10	358.80	6431.66	3711.52	1032.79	3724.38	1.92	-0.95	-1.67	MWD
10216.00	89.60	358.40	6431.77	3754.51	1031.74	3767.35	1.49	-1.16	-0.93	MWD
10258.00	89.30	357.90	6432.18	3796.49	1030.38	3809.30	1.39	-0.71	-1.19	MWD
10301.00	90.00	358.60	6432.44	3839.46	1029.07	3852.26	2.30	1.63	1.63	MWD
10344.00	90.90	359.10	6432.10	3882.45	1028.20	3895.24	2.39	2.09	1.16	MWD
10386.00	92.40	359.50	6430.89	3924.43	1027.69	3937.21	3.70	3.57	0.95	MWD
10429.00	92.20	359.50	6429.17	3967.40	1027.32	3980.16	0.47	-0.47	0.00	MWD
10472.00	91.70	0.90	6427.70	4010.37	1027.47	4023.13	3.46	-1.16	3.26	MWD
10514.00	91.90	0.90	6426.39	4052.34	1028.13	4065.11	0.48	0.48	0.00	MWD

Precision Directional Services, Inc.

Survey Report

Company: CARRIZO OIL & GAS, INC. Field: Niobrara CONZ'83 Site: Nelson 2-17-9-60 Pad Well: 5-17-9-60 Wellpath: Original Hole	Date: 04/02/2013 Time: 08:01:04 Page: 5 Co-ordinate(NE) Reference: Well: 5-17-9-60, Grid North Vertical (TVD) Reference: 4991'GL+17'KB 4508.0 Section (VS) Reference: Well (0.00N,0.00E,0.73Azi) Survey Calculation Method: Minimum Curvature Db: Adapti
--	--

Survey

MD ft	Incl deg	Azim deg	TVD ft	+N/-S ft	+E/-W ft	VS ft	DLS deg/100ft	Build deg/100ft	Turn deg/100ft	Tool/Comment
10557.00	91.00	0.40	6425.30	4095.33	1028.61	4108.10	2.39	-2.09	-1.16	MWD
10600.00	90.70	0.00	6424.66	4138.32	1028.76	4151.09	1.16	-0.70	-0.93	MWD
10642.00	90.10	0.20	6424.37	4180.32	1028.84	4193.09	1.51	-1.43	0.48	MWD
10685.00	90.00	0.00	6424.33	4223.32	1028.91	4236.09	0.52	-0.23	-0.47	MWD
10728.00	90.00	359.70	6424.33	4266.32	1028.80	4279.08	0.70	0.00	-0.70	MWD
10770.00	90.40	0.20	6424.18	4308.32	1028.76	4321.08	1.52	0.95	1.19	MWD
10778.00	90.50	0.40	6424.12	4316.32	1028.81	4329.08	2.80	1.25	2.50	MWD
10835.00	90.50	0.40	6423.62	4373.31	1029.20	4386.07	0.00	0.00	0.00	Project

Annotation

MD ft	TVD ft	
6797.00	6422.39	600' entry