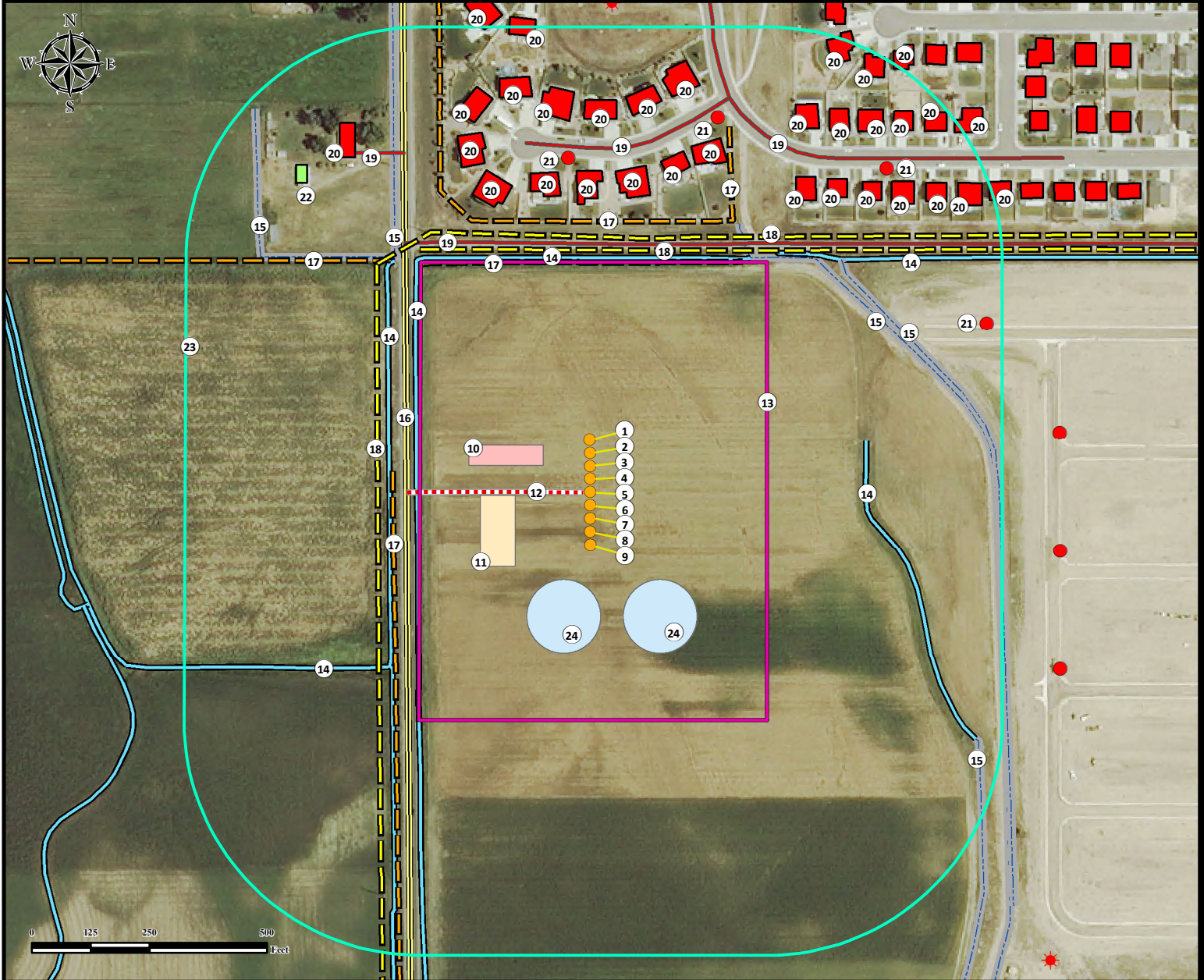


JOHNSON TRUST 13-I PAD LOCATION DRAWING



- | | | |
|---|--|--|
| <p>1. Proposed Well JOHNSON TRUST 1.
2. Proposed Well JOHNSON TRUST 2.
3. Proposed Well JOHNSON TRUST 3.
4. Proposed Well JOHNSON TRUST 4.
5. Proposed Well JOHNSON TRUST 5.
6. Proposed Well JOHNSON TRUST 6.
7. Proposed Well JOHNSON TRUST 7.
8. Proposed Well JOHNSON TRUST 8.
9. Proposed Well JOHNSON TRUST 9.
10. Proposed Separator Pad.
11. Proposed Tank Battery.
12. Proposed Access Road.</p> | <p>13. Operational Disturbance Area.
14. Ditches are ±368' W, ±426' W, ±499' N, ±565' SW, ±584' E, and ±647' NE.
15. Concrete Ditches are ±603' NE, ±648' NW, ±641' NW, ±716' NE and ±972' SE.
16. Public Road (CR 11) is ±372' W.
17. Fences are ±419' W, ±489' N, ±577' N, ±653' NE, and ±651' NW.
18. Powerlines are ±451' W, ±515' N, and ±542' N.
19. Private Roads are ±528' N, ±732' N, ±823' NW, and ±843' NE.
20. Building Units are ±613' N, ±631' NE, ±635' NW, ±640' NW, ±689' NE, ±732' NE, ±735' NW, ±824' NW, ±851' NW, ±791' N, ±795' N, ±807' NE, ±860' NE, ±877' NW, ±759' NE, ±806' NE, ±849' NE, ±886' NE, ±944' NE, ±991' NE, ±887' NE, ±922' NE, ±955' NE, ±1002' NE, ±1045' NE, ±1051' NE, ±1088' NE, ±1107' NE, ±1060' NE, ±1045' NE, ±976' NW, and ±1008' NW.</p> | <p>21. Fire Hydrants are ±712' N, ±841' NE, ±915' NE, and ±933' NE.
22. Building is ±891' NW.
23. 500' Radius.
24. MLVTs are ±189' SW, ±222' SE.</p> |
|---|--|--|

Legend

- | | | |
|---|--|---|
| <ul style="list-style-type: none"> ● Proposed Well ● Fire Hydrant ★ Existing Well ● MLVT | <ul style="list-style-type: none"> — Private Road — Ditch - - - Proposed Access Road — Public Road — Powerline — Fence — Concrete Ditch | <ul style="list-style-type: none"> Disturbance Area 500' Radius Building Unit Building Proposed Tank Battery Proposed Separator Pad |
|---|--|---|

Measured from Nearest Well or Facility

Building -	±501' N
Building Unit -	±501' N
Public Road - (CR 11)	±119' W
Prop. Line (Weld County)	±135' W

Utility (Power Line) -	±197' W
Railroad -	>5280' NW

Measured from Nearest Edge of Disturbance Area	
Surface Water (Ditch) -	±0' W

Measured from Nearest Well	
Water Well - ±1492' NW	SWL = 0'
Permit: 90267	Receipt: 0080172
Water Well - ±2561' NW	SWL = 24'
Permit: 68239	Receipt: 9065133

Reference Location

**** JOHNSON TRUST 5 ****

Lat: 40.137339°
Long: -104.959620° (NAD83)
Elevation: 4925 Feet
2153' FSL & 389' FWL
PDOP: 1.6
Operator: Alan Inizdo

Disturbance Acreage:

16.49 Acres Drilling Operations
7.95 Acres Interim Reclaim

Current Surface Use: Irrigated Crop
Future Surface Use: Irrigated Crop

PREPARED FOR:



FIELD DATE:
07-12-14

DRAWING DATE:
11-24-15

BY:
PAL

CHECKED BY:
MLP

SITE NAME:
JOHNSON TRUST 13-I PAD

SURFACE LOCATION:
NW1/4 SW1/4 SEC. 13, T2N, R68W, 6TH P.M.
WELD COUNTY, COLORADO

