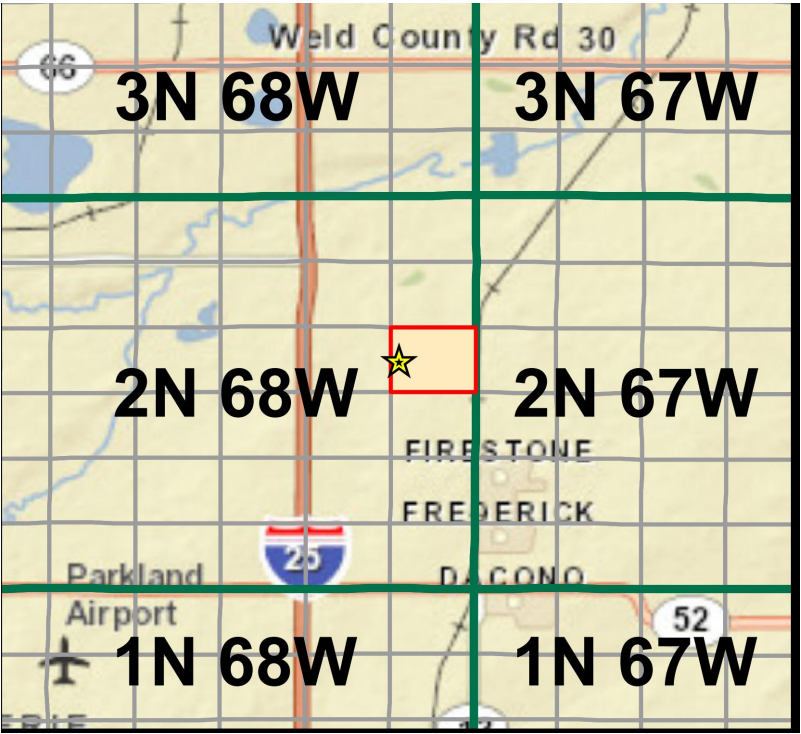
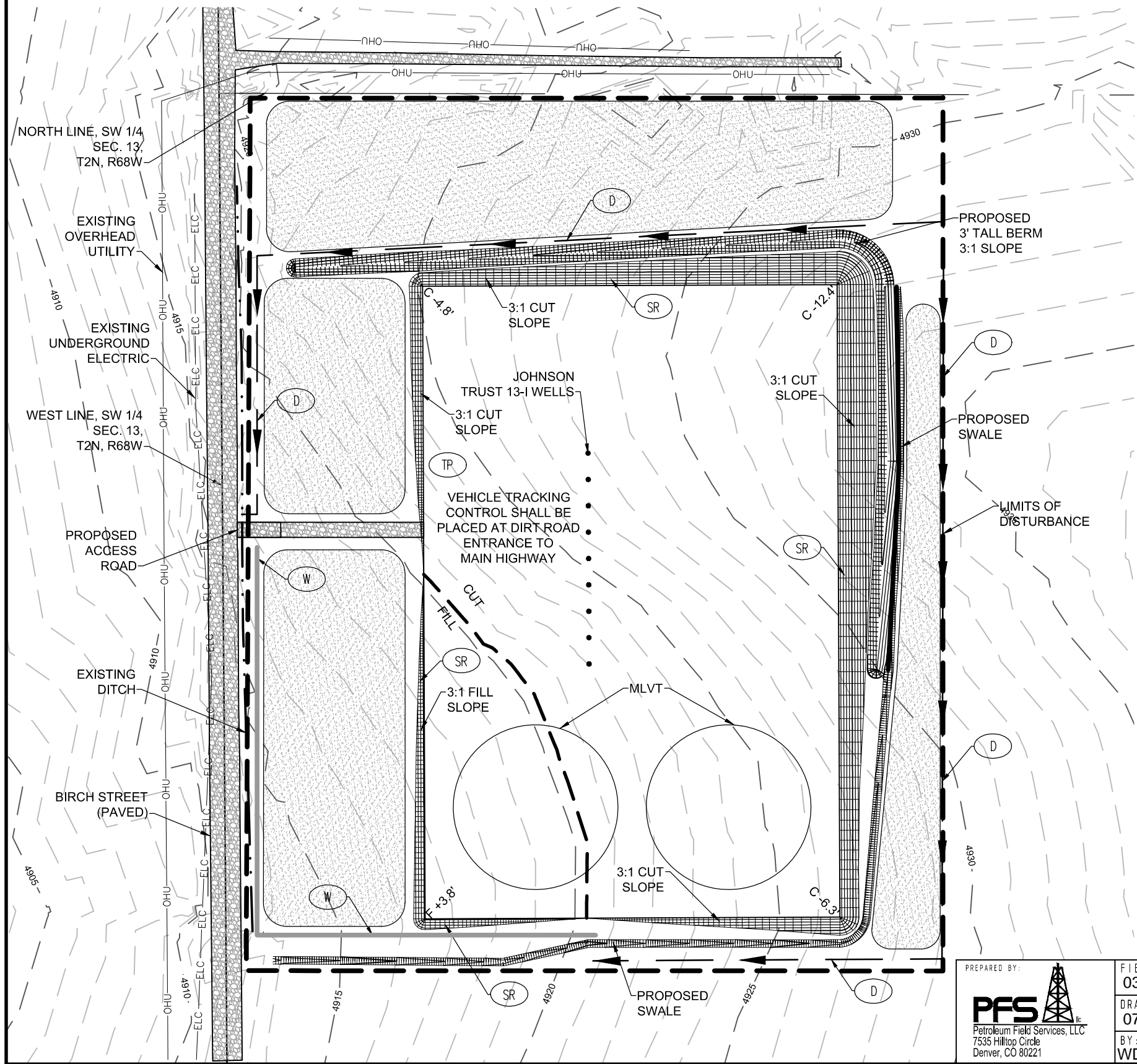


JOHNSON TRUST 13-I PAD
DRILLING PAD
EROSION AND SEDIMENT CONTROL PLAN



VICINITY MAP
NOT TO SCALE

LEGEND

- PROPOSED WELL
- TP TRACKING PAD
- D DITCH
- W WATTLES
- SR SOIL ROUGHENING

NOTE: SEE APPENDIX D OF FIELD-WIDE
STORMWATER MANAGEMENT PLAN FOR OIL AND
GAS OPERATIONS. DJ BASIN PROJECT AREA, FOR
BMP DETAILS

PREPARED BY:
PFS
Petroleum Field Services, LLC
7535 Hilltop Circle
Denver, CO 80221

FIELD DATE:
03-18-15
DRAWING DATE:
07-27-15
BY:
WDW
CHECKED BY:
JWJ

SITE NAME:
JOHNSON TRUST 13-I PAD
SURFACE LOCATION:
NW 1/4 SW 1/4, SEC. 13, T2N, R68W, 6TH P.M.
WELD COUNTY, COLORADO

PREPARED FOR:

