



**Photo 1:** Photo taken from northwest part of location, facing south. Photo of interim reclamation. Note dumpster in center of photo, unnecessary equipment needs to be removed.



**Photo 2:** Photo taken from northwestern part of location, facing east. Photo of interim reclamation and dumpster equipment.



**Photo 3:** Photo taken from northeastern part of location, facing south. Photo of interim reclamation. Not the lack of perennial vegetation and Russian thistle weed debris.



**Photo 4:** Photo taken from northeastern part of location, facing west. Photo of interim reclamation.



**Photo 5:** Photo taken from eastern part of location. Photo of panel surrounding equipment in disrepair and weed debris.



**Photo 6:** Photo taken from eastern part of location. Photo of panel surrounding equipment in disrepair and weed debris.



**Photo 7:** Photo taken from southeastern part of location, facing north.



**Photo 8:** Photo taken from southeastern part of location, facing west. Vegetation is predominantly Russian thistle.



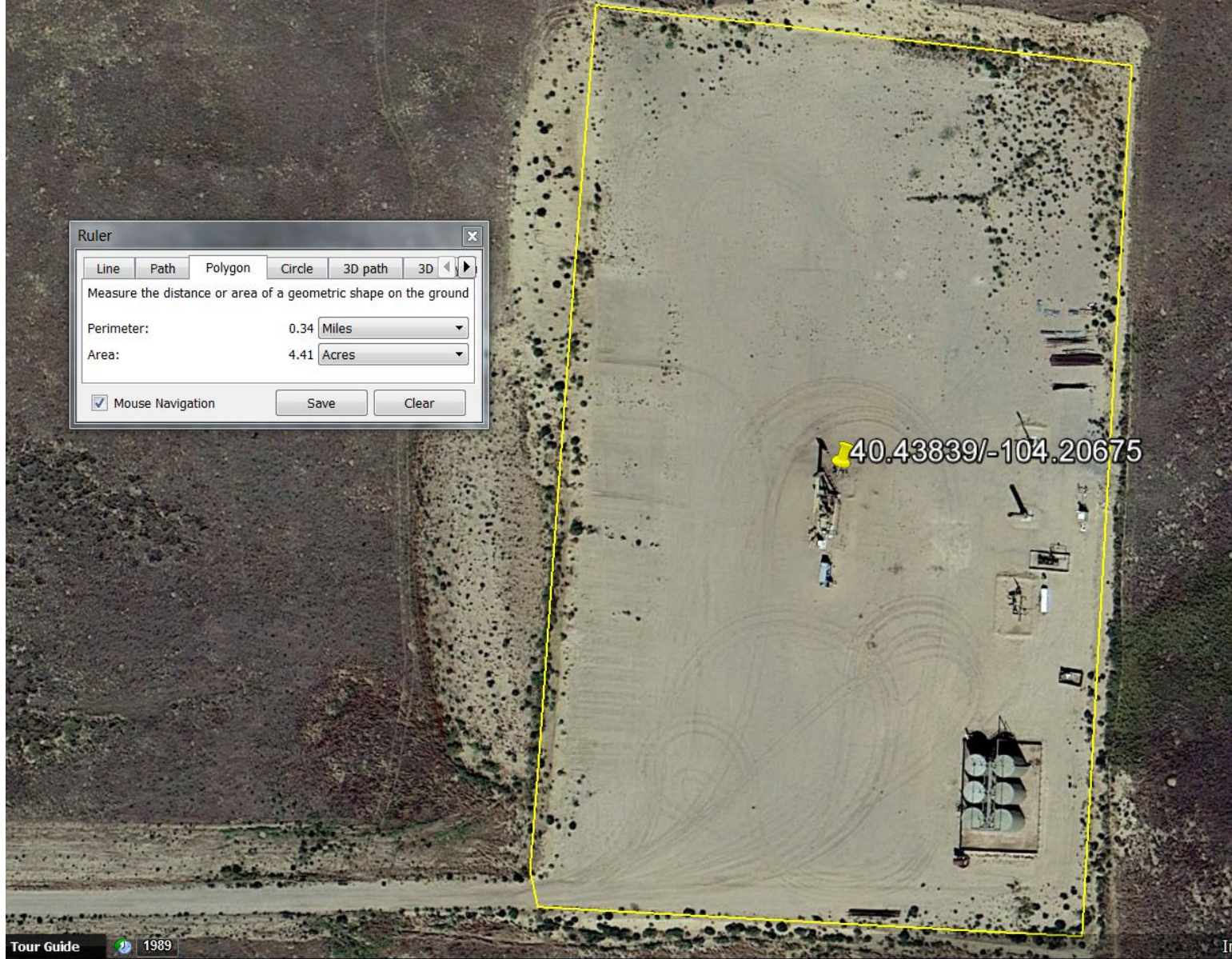
**Photo 9:** Photo taken from southwestern part of location, facing east. Vegetation is predominantly Russian thistle.



**Photo 10:** Photo taken from southwestern part of location, facing north.



**Photo 11:** Photo taken from western part of location. Photo of weed debris in equipment, and trash debris. Trash debris appears to be a black tarp. Stained soil evident on ground below equipment.



**Photo 12:** Aerial photo of location. Image shows location area currently is approximately 4.4 acres.