

**Kyle E. Rutz**—On behalf of Lat40, Inc.  
**Colorado Licensed Professional** DATE: 8/26/2015  
**Land Surveyor No. 38307** PROJECT#: 2015026

**Kyle E. Rutz**—On behalf of Lat40, Inc.  
**Colorado Licensed Professional Land Surveyor No. 38307**      **DATE: 8/26/2015**  
**PROJECT#: 2015026**

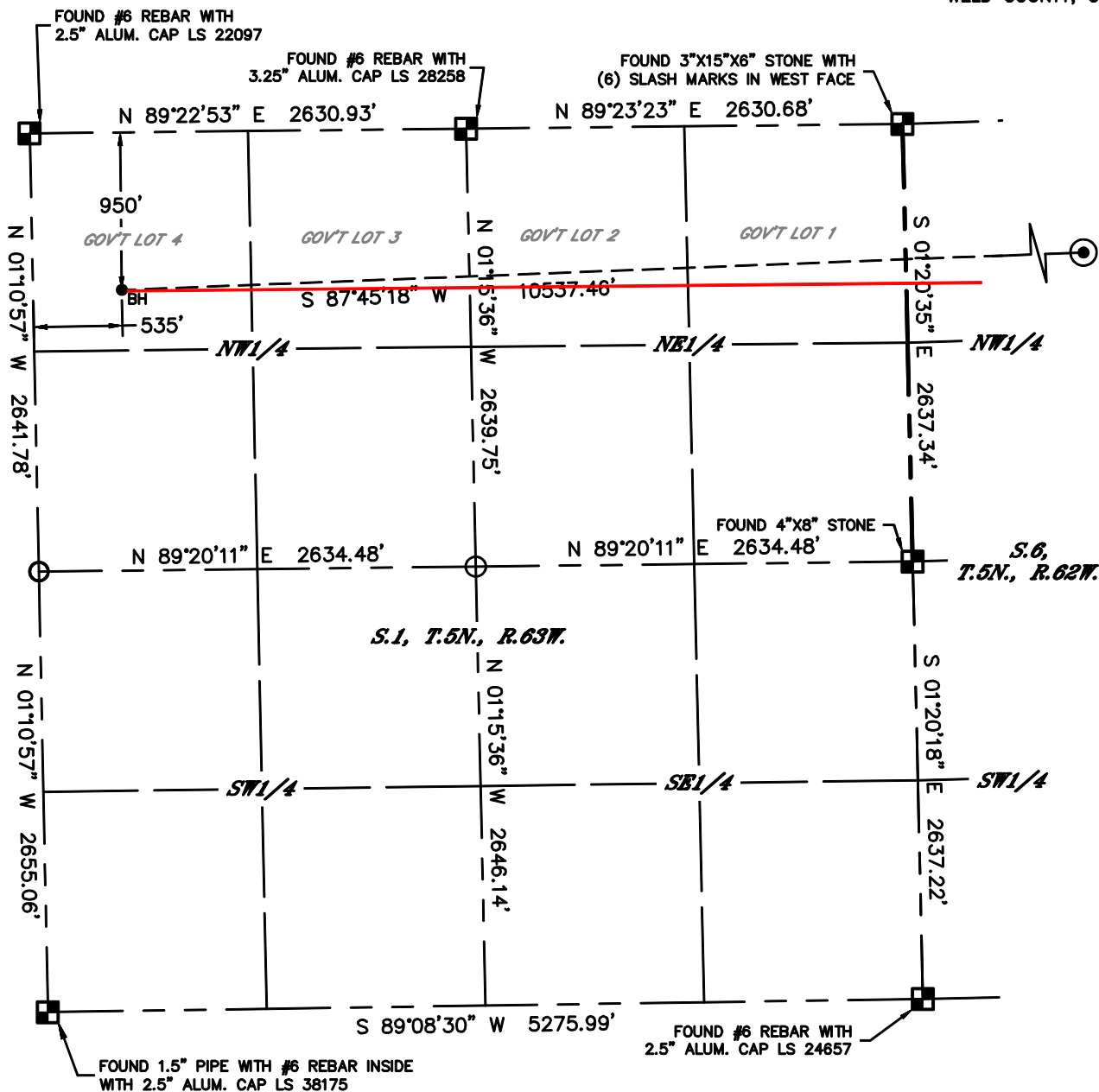


Lat40°, Inc. 6250 W. 10th Street, Unit 2, Greeley, CO 970-515-5294

# WELL LOCATION CERTIFICATE

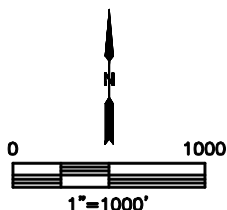
WELLS RANCH BB01-675

SECTION: 5  
TOWNSHIP: 5N  
RANGE: 62W  
6TH. P.M.  
WELD COUNTY, CO



## LEGEND

- = ALIQUOT MONUMENT AS DESCRIBED
- = CALCULATED POSITION
- ⊙ = SURFACE HOLE LOCATION (SHL)
- ▲ = ENTRY POINT LOCATION (EP)
- = BOTTOM HOLE LOCATION (BHL)
- ⊕ = EXISTING WELL
- ⊖ = ABANDONED WELL



**SHEET 3 OF 3**

Kyle E. Rutz—On behalf of Lat40°, Inc.  
Colorado Licensed Professional Land Surveyor No. 38307  
DATE: 8/26/2015  
PROJECT#: 2015026





Lat40°, Inc. 6250 W. 10th Street, Unit 2, Greeley, CO 970-515-5294

# SITE SKETCH

WELLS RANCH BB01-675

SECTION: 5  
TOWNSHIP: 5N  
RANGE: 62W  
6TH. P.M.  
WELD COUNTY, CO

WELL NO.	WELL NAME	SHL FOOTAGE				SHL LAT°	SHL LONG°	PDOP	ELEV (FT.)	1/4/1/4
1	WELLS RANCH USX BB 01-04	743	FNL	801	FWL	40.43358	-104.39185	1.3	4722	NWNW
2	WELLS RANCH USX BB 1-5	1873	FNL	629	FWL	40.43048	-104.39244	1.4	4716	SWNW
9	WELLS RANCH USX BB 01-03	648	FNL	1944	FWL	40.43384	-104.38775	1.6	4721	NENW
10	WELLS RANCH - USA BB 1-19	1275	FNL	1495	FWL	40.43212	-104.38935	1.6	4721	NENW
11	WELLS RANCH USX BB 1-6	2048	FNL	2000	FWL	40.42999	-104.38751	1.5	4715	SENW
12	WELLS RANCH USX BB 01-02	638	FNL	1953	FEL	40.43386	-104.38285	1.6	4729	NWNE
13	WELLS RANCH USX BB 1-17	1422	FNL	1096	FEL	40.43170	-104.37974	2.0	4700	SENE
14	WELLS RANCH USX BB 01-01	670	FNL	655	FEL	40.43376	-104.37818	1.9	4716	NENE
15	WELLS RANCH USX BB 1-7	1846	FNL	1957	FEL	40.43054	-104.38282	1.6	4705	SWNE
32	WELLS RANCH USX BB 01-08	1911	FNL	477	FEL	40.43036	-104.37750	1.8	4696	SENE
33	WELLS RANCH AF 06-05	1827	FNL	539	FWL	40.43062	-104.37385	2.1	4694	SWNW
34	WELLS RANCH AF 06-06	2010	FNL	2015	FWL	40.43020	-104.36854	1.9	4680	SENW
35	WELLS RANCH AF 06-04	510	FNL	697	FWL	40.43424	-104.37333	1.9	4690	NWNW
36	WELLS RANCH AF 06-03	763	FNL	2116	FWL	40.43363	-104.36823	1.9	4677	NENW
37	WELLS RANCH AF 06-07	1837	FNL	2037	FEL	40.43075	-104.36410	1.9	4674	SWNE
38	WELLS RANCH AF 06-02	666	FNL	2082	FEL	40.43396	-104.36431	1.8	4685	NWNE
60	WELLS RANCH AF 06-09	1879	FSL	516	FEL	40.42640	-104.35857	1.5	4667	NESE
63	WELLS RANCH AF 06-01	685	FNL	738	FEL	40.43399	-104.35949	1.7	4681	NENE