

Loc. ID 435387- Reclamation and Stormwater Inspection

- Photos 2 through 5: Southwest quarter of location.
 - Photos of erosion issues on location.



Photo 1: Photo of eastern battery sign.



Photo 2: Photo taken from southwestern end of location, facing east. Note the erosion in center-right and center-left of photo forming stormwater erosion channels #1 and #2.



Photo 3: Photo taken on southern end of location. Photo of rill erosion.



Photo 4: Photo taken from southern end of location, facing east. Note the rill erosion forming stormwater erosion channel #1.



Photo 5: Photo taken from southern end of location, facing east. Note the rill erosion forming stormwater erosion channel #1.

Loc. ID 435387- Reclamation Inspection

- Photos 6 through 12: Northern half of location.
 - Exposed sub-surface structure with pipe underground.
 - Wildlife and safety hazard.
 - Erosion issues.
 - Exposed pipeline.



Photo 6: Photo taken from northwestern end of location. Photo of exposed wooden sub-surface structure.



Photo 7: Photo of pipe and valves within exposed wooden sub-surface structure. This poses a hazard to wildlife and human safety.



Photo 8: Photo taken from southwestern end of location facing east. Note erosion forming stormwater erosion channel #2.



Photo 9: Photo taken from north end of location facing south. Photo of exposed pipe and stormwater erosion.



Photo 10: Photo taken from northern end of location facing west. Stormwater erosion channels #3 and #4 shown on northern half of location.



Photo 11: Photo taken from northern end of location facing west. Photo of stormwater erosion channels #3, #4, and #5 on northern half of location.



Photo 12: Photo taken from northeastern part of location, facing west. Photo of meander formed from stormwater.

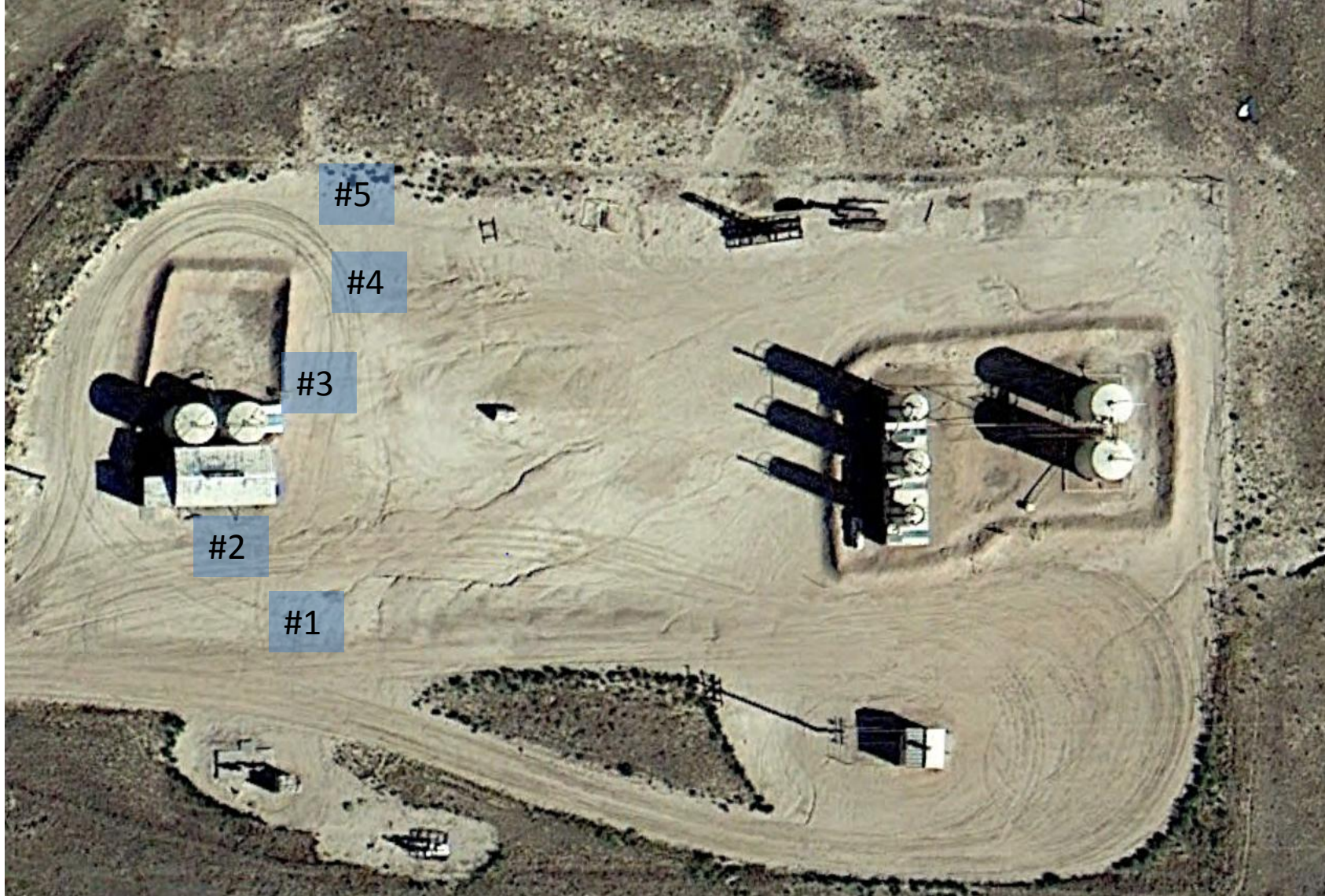


Photo 13: Aerial image date 09/2013. Image showing erosion channels on location.

Loc. ID 435387- Reclamation Inspection

- Photos 14 through 16: Eastern end of location.
 - Erosion issues leading offsite.
- Photos 17 through 24: East off of location.
 - Erosion issues, head cuts and gulley
 - Aerial imagery



Photo 14: Photo taken from east end of location facing north. Photo shows confluence of storm water erosion channels from northern and southern halves of location.



Photo 15: Photo taken from east end of location, facing east. Photo shows confluence of storm water erosion channels from northern and southern halves of location, leading off location

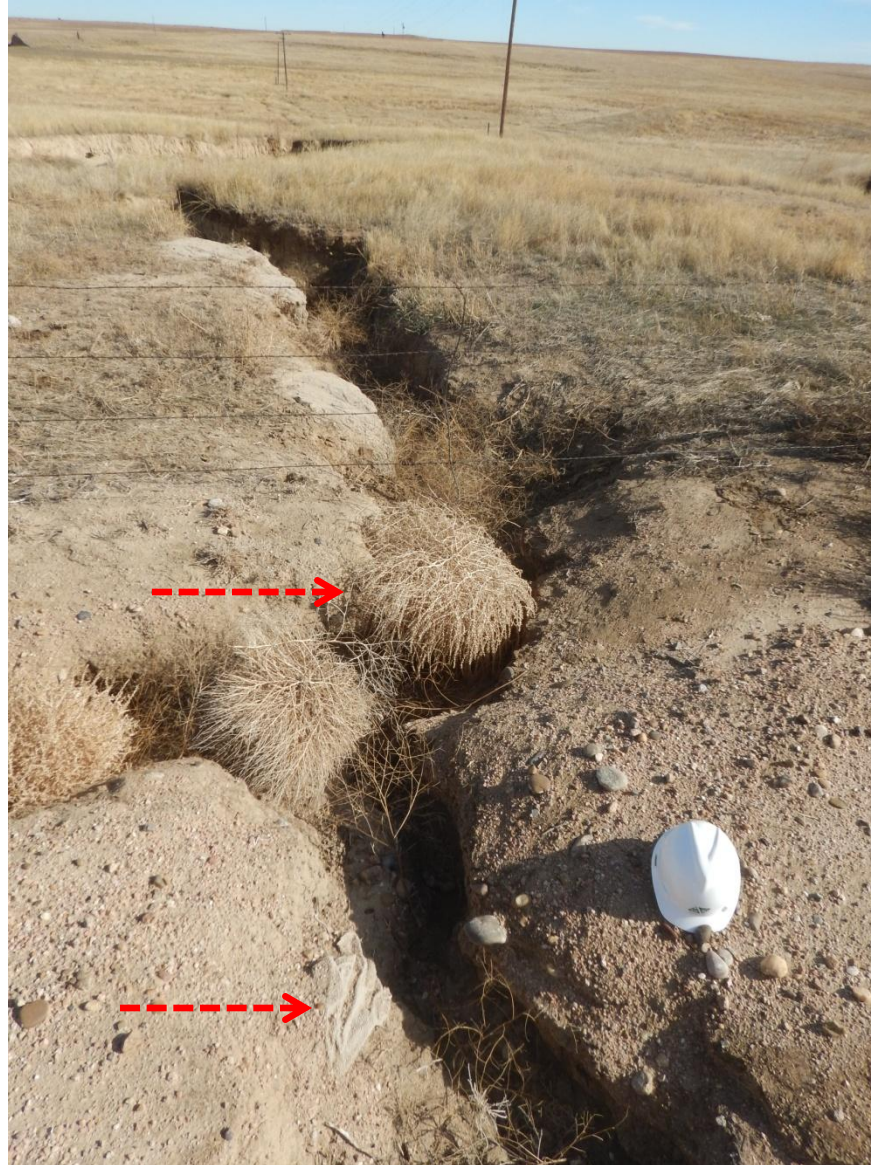


Photo 16: Photo taken from east end of location, facing east. Photo of gully on and off location area. Note vegetative and trash debris indicated with arrow. Trash appears to be cloth material.



Photo 17: Photo taken east of location facing west towards location. Photo of gully. Note trash debris indicated with arrow. Trash debris appears to be metal panel.



Photo 18: Photo taken east of location facing west towards location. Photo of gully and sediment.



Photo 19: Photo taken east of location facing west towards location. Photo of “washed out”, eroded area.



Photo 20: Photo taken east of location facing west towards location. Photo of exposed pipeline.



Photo 21: Photo taken east of location facing west. Photo of gully section below “washed out” location.

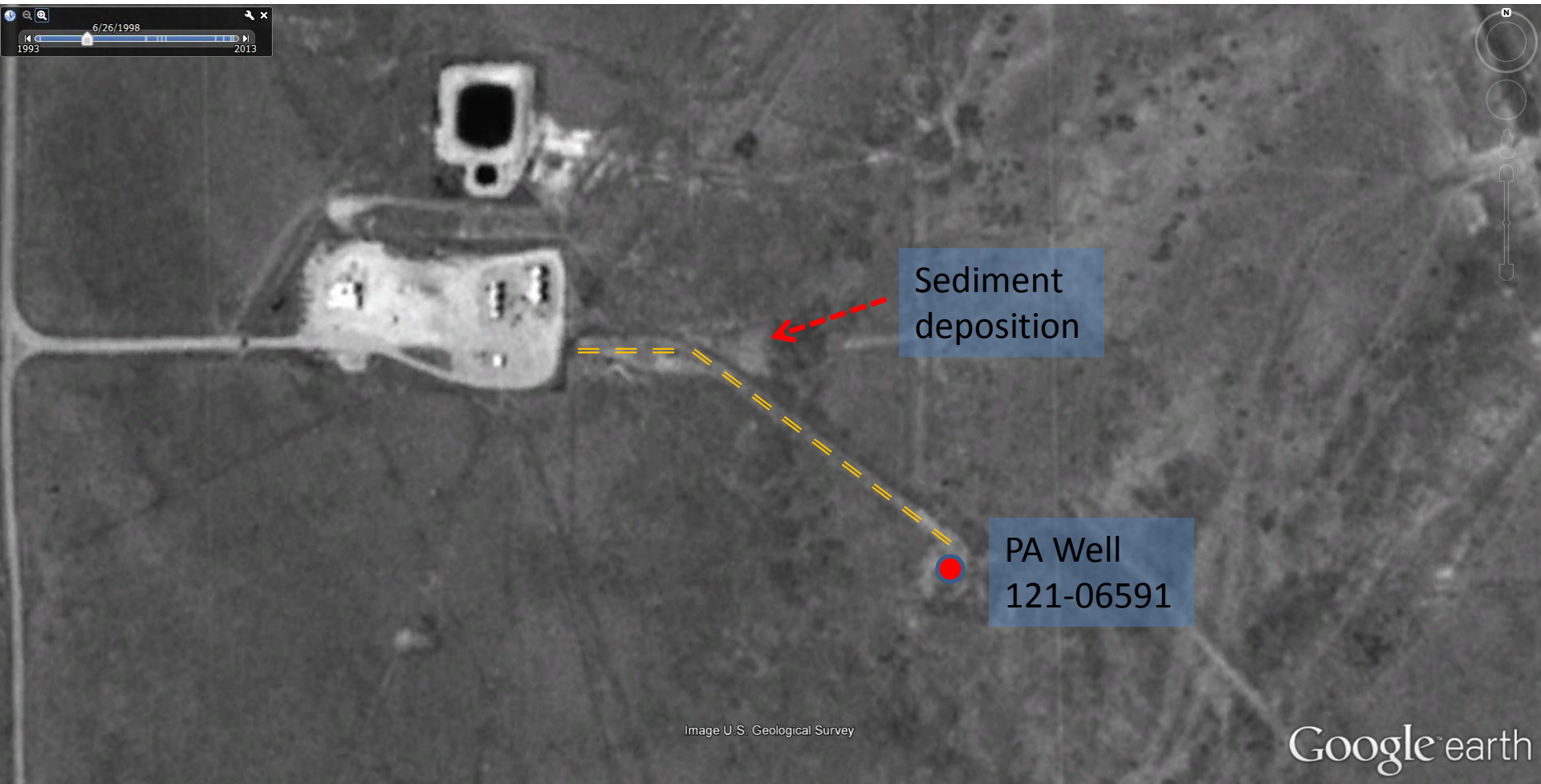


Photo 22: Aerial image date 6/1998. Image shows disturbance, either pipeline or road leading to well 121-06591. Image also shows sign of erosion including sediment deposition.

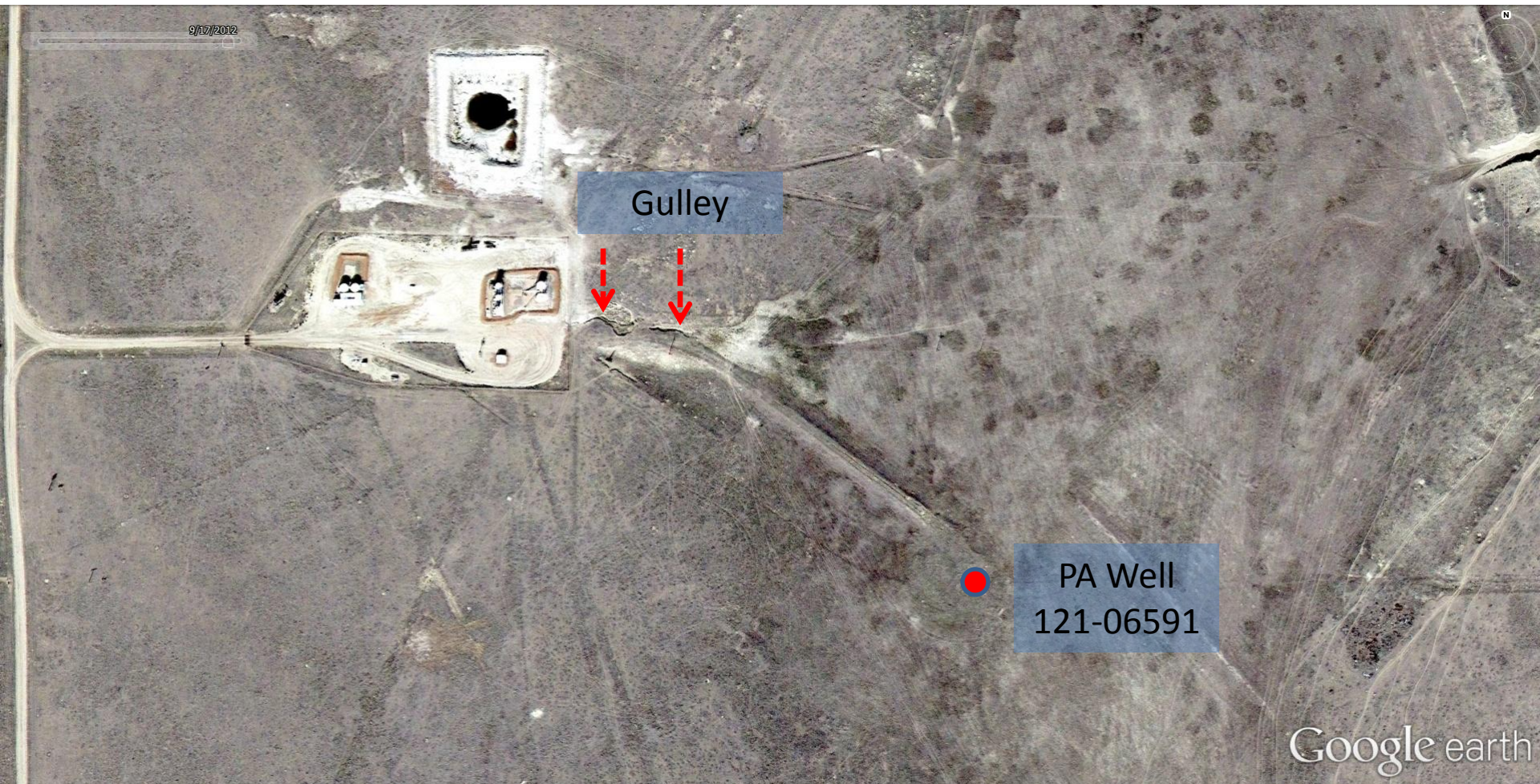


Photo 23: Aerial image date 9/2012. Deposition area shows sign of expansion.

9/6/2013



Photo 24: Aerial image date 9/2013. Most up-to-date aerial image or erosion east of location.

Loc. ID 435387- Reclamation Inspection

- Photos 25 through 27: Issues north of battery location.
 - Sediment leaving pit location
 - Disturbances along either a gathering, or flow line.



Photo 25: Photo taken from east end of pit location, facing west. Note rill erosion along slope of pit. The unvegetated portion center of photo (below pit) is sediment deposition coming off of pit location. This area needs to be reclaimed

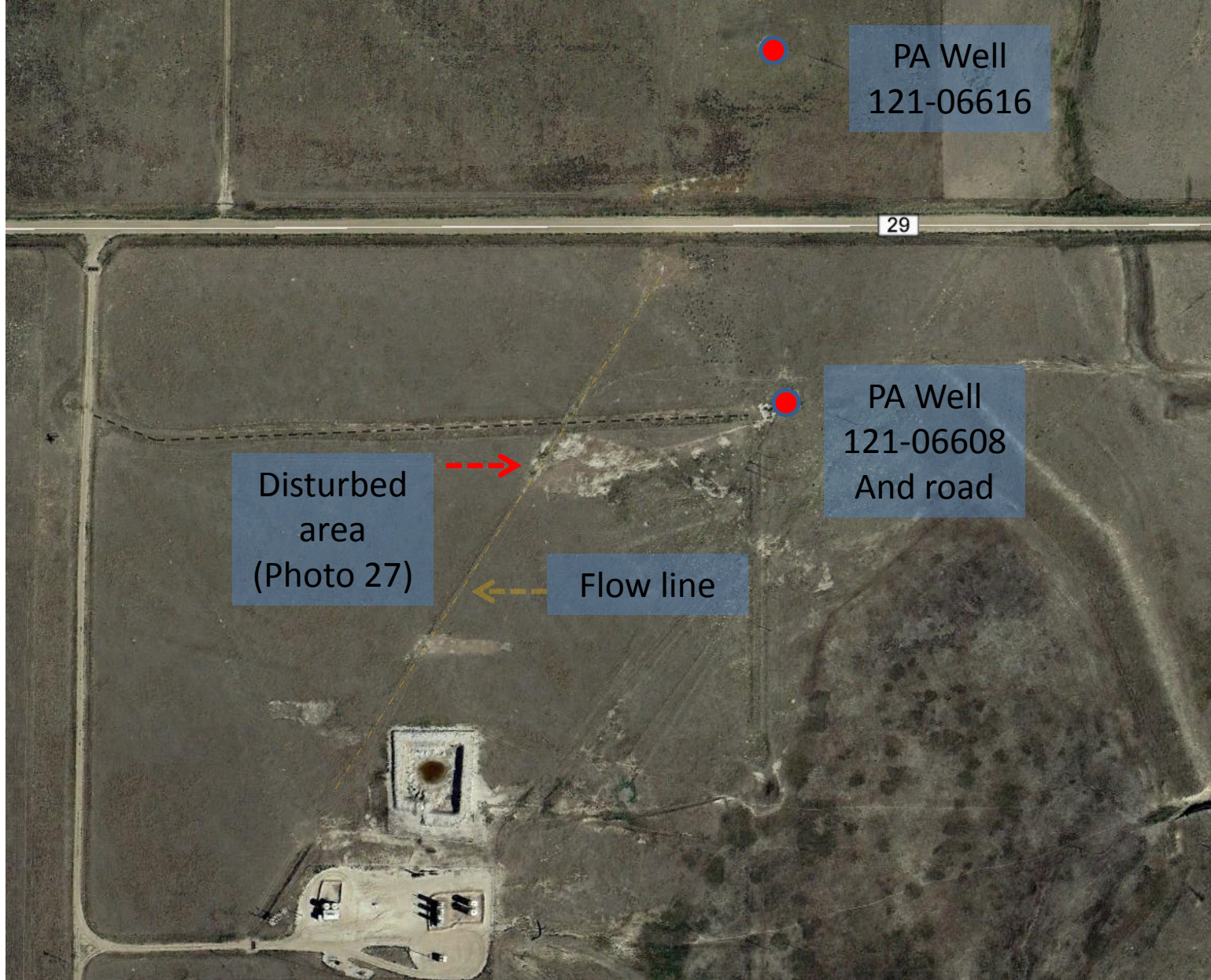


Photo 26: Aerial image date 9/2013. Note the disturbed areas along gathering/flow line. These areas need to be reclaimed.



Photo 27: Photo of disturbed land related to flow line referred to in photo 26. Area located at $39^{\circ}59'12.59''\text{N}$, $103^{\circ}39'39.63''\text{W}$. These areas need to be reclaimed.