

GROUNDWATER MONITORING REPORT

JUNE 2011

DECHANT 1-31A (API 05-123-11685)
REMEDATION # PENDING

PETROLEUM DEVELOPMENT CORPORATION DJ BASIN

This report summarizes the results of recent groundwater sampling conducted by LT Environmental, Inc. (LTE), on behalf of Petroleum Development Corporation (PDC), at the Dechant 1-31A site located in the Denver Julesburg Basin (DJ Basin) of northeastern Colorado (Figure 1).

Prior to sampling, groundwater level measurements were collected from the monitoring wells and are summarized in Table 1. A site map illustrating well locations is presented on Figure 2. Following purging, groundwater samples were collected and then submitted under strict chain of custody protocol to Summit Scientific in Golden, Colorado for analysis of benzene, toluene, ethylbenzene, and total xylenes (BTEX) by EPA Method 8260B. Analytical results from the groundwater samples are also presented in Table 1. The laboratory analytical report is attached.

LTE will continue to conduct quarterly groundwater monitoring events with the goal of observing four consecutive quarters of analytical results in compliance with applicable regulatory standards as set forth on Table 910-1 of the Colorado Oil and Gas Commission Rules.



TABLE 1
GROUNDWATER ANALYTICAL AND FIELD RESULTS
DECHANT 1-31A API No. 05-05-123-11685
WELD COUNTY
PETROLEUM DEVELOPMENT CORPORATION

| Well Name | Date | Benzene (ug/L) | Toluene (ug/L) | Ethyl-benzene (ug/L) | Xylenes (ug/L) | Depth to Water (ft btoc) |
|-----------|------------|----------------|----------------|-----------------------|----------------|--------------------------|
| MW01 | 12/16/2009 | <1.0 | 1.5 | 47 | 540 | NM |
| | 06/22/2010 | | | Damaged - Not Sampled | | |
| MW02 | 12/16/2009 | 62 | 1300 | 610 | 5600 | NM |
| | 06/22/2010 | | | Damaged - Not Sampled | | |
| MW03 | 12/16/2009 | 440 | 6000 | 960 | 12000 | NM |
| | 06/22/2010 | | | Damaged - Not Sampled | | |
| MW04 | 12/16/2009 | <1.0 | 13 | 240 | 3000 | NM |
| | 06/22/2010 | <1.0 | <1.0 | 23 | 260 | 18.05 |
| | 09/17/2010 | <1.0 | <1.0 | 9.5 | 81 | 17.41 |
| | 12/09/2010 | <1.0 | <1.0 | 1.4 | 6.7 | 16.88 |
| | 03/10/2011 | | | Damaged - Not Sampled | | |
| | 06/08/2011 | | | Damaged - Not Sampled | | |
| MW05 | 12/16/2009 | 140 | 1400 | 960 | 12000 | NM |
| | 06/22/2010 | | | Damaged - Not Sampled | | |
| MW07 | 12/16/2009 | <1.0 | <1.0 | <1.0 | <1.0 | NM |
| | 06/22/2010 | <1.0 | <1.0 | <1.0 | <1.0 | 21.45 |
| | 09/17/2010 | <1.0 | <1.0 | <1.0 | <1.0 | 20.83 |
| | 12/09/2010 | <1.0 | <1.0 | <1.0 | <1.0 | 20.32 |
| | 03/10/2011 | <1.0 | <1.0 | <1.0 | <1.0 | 20.10 |
| | 06/08/2011 | <1.0 | <1.0 | <1.0 | <1.0 | 20.00 |
| MW08 | 12/16/2009 | <1.0 | <1.0 | <1.0 | <1.0 | NM |
| | 06/22/2010 | | | Damaged - Not Sampled | | |
| MW09 | 12/16/2009 | <1.0 | <1.0 | <1.0 | <1.0 | NM |
| | 06/22/2010 | <1.0 | <1.0 | <1.0 | <1.0 | 17.62 |
| | 09/17/2010 | <1.0 | <1.0 | <1.0 | <1.0 | 17.03 |
| | 12/09/2010 | <1.0 | <1.0 | <1.0 | <1.0 | 16.51 |
| | 03/10/2011 | <1.0 | <1.0 | <1.0 | <1.0 | 16.32 |
| | 06/08/2011 | <1.0 | <1.0 | <1.0 | <1.0 | 15.15 |
| MW10 | 12/16/2009 | 310 | 1000 | 690 | 8700 | NM |
| | 06/22/2010 | 8.4 | 5.1 | 30 | 720 | 17.95 |
| | 09/17/2010 | 55 | <1.0 | 45 | 280 | 17.36 |
| | 12/09/2010 | 34 | <1.0 | 780 | 3700 | 16.83 |
| | 03/10/2011 | 12 | <1.0 | 870 | 2600 | 16.60 |
| | 06/08/2011 | <1.0 | <1.0 | 28 | 140 | 16.70 |
| MW11 | 01/18/2010 | 1.0 | <1.0 | 4.9 | <1.0 | NM |
| | 06/22/2010 | <1.0 | <1.0 | <1.0 | <1.0 | 18.70 |
| | 09/17/2010 | <1.0 | <1.0 | <1.0 | <1.0 | 18.16 |
| | 12/09/2010 | <1.0 | <1.0 | <1.0 | <1.0 | 17.55 |
| | 03/10/2011 | | | Damaged - Not Sampled | | |
| | 06/08/2011 | | | Damaged - Not Sampled | | |
| MW12 | 01/18/2010 | <1.0 | <1.0 | <1.0 | <1.0 | NM |
| | 06/22/2010 | <1.0 | <1.0 | <1.0 | <1.0 | 18.85 |
| | 09/17/2010 | <1.0 | <1.0 | <1.0 | <1.0 | 18.25 |
| | 12/09/2010 | <1.0 | <1.0 | <1.0 | <1.0 | 17.69 |
| | 03/10/2011 | <1.0 | <1.0 | <1.0 | <1.0 | 17.42 |
| | 06/08/2011 | <1.0 | <1.0 | <1.0 | <1.0 | 17.33 |
| MW13 | 01/18/2010 | 35 | <1.0 | 230 | 73 | NM |
| | 06/22/2010 | 5.1 | <1.0 | 290 | <1.0 | 18.56 |
| | 09/17/2010 | 13 | <1.0 | 160 | <1.0 | 17.95 |
| | 12/09/2010 | 4.4 | <1.0 | 160 | <1.0 | 17.42 |
| | 03/10/2011 | <1.0 | <1.0 | 23 | 3.4 | 16.15 |

TABLE 1
GROUNDWATER ANALYTICAL AND FIELD RESULTS
DECHANT 1-31A API No. 05-05-123-11685
WELD COUNTY
PETROLEUM DEVELOPMENT CORPORATION

| Well Name | Date | Benzene (ug/L) | Toluene (ug/L) | Ethyl-benzene (ug/L) | Xylenes (ug/L) | Depth to Water (ft btoc) |
|--|------------|----------------|----------------|-------------------------|----------------|--------------------------|
| | 06/08/2011 | <1.0 | <1.0 | 110 | <1.0 | 17.04 |
| MW14 | 01/18/2010 | <1.0 | <1.0 | <1.0 | <1.0 | NM |
| | 06/22/2010 | <1.0 | <1.0 | <1.0 | <1.0 | 19.06 |
| | 09/17/2010 | 3.9 | <1.0 | 180 | 25 | 18.49 |
| | 12/09/2010 | <1.0 | <1.0 | 3.8 | <1.0 | 17.94 |
| | 03/10/2011 | 1.2 | <1.0 | 8.8 | <1.0 | 17.64 |
| | 06/08/2011 | <1.0 | <1.0 | 1.3 | <1.0 | 17.69 |
| MW15 | 02/10/2010 | 240 | <1.0 | 340 | 1600 | NM |
| | 06/22/2010 | <1.0 | <1.0 | <1.0 | <1.0 | 17.04 |
| | 09/17/2010 | | | Not Found - Not Sampled | | |
| | 12/09/2010 | | | Not Found - Not Sampled | | |
| | 03/10/2011 | | | Not Found - Not Sampled | | |
| | 06/08/2011 | | | Not Found - Not Sampled | | |
| MW16 | 02/10/2010 | 44 | <1.0 | 130 | 450 | NM |
| | 06/22/2010 | <1.0 | <1.0 | 4.4 | 12 | 16.72 |
| | 09/17/2010 | | | Not Found - Not Sampled | | |
| | 12/09/2010 | | | Not Found - Not Sampled | | |
| | 03/10/2011 | | | Not Found - Not Sampled | | |
| | 06/08/2011 | | | Not Found - Not Sampled | | |
| Basic Standards for Groundwater | | 5 | 560 | 700 | 1400 | |

Notes: < - less than ug/L - micrograms per Liter NA - Not Analyzed/Not Available
ft btoc - feet below top of casing NM - Not measured API - American Petroleum Institute
Basic Standards for Groundwater are taken from the Colorado Department of Health and Environment (CDPHE) -
Water Quality Control Commission (WQCC) Regulation 41, May 2008
Bold numbers indicate result equalled or exceeded standard.

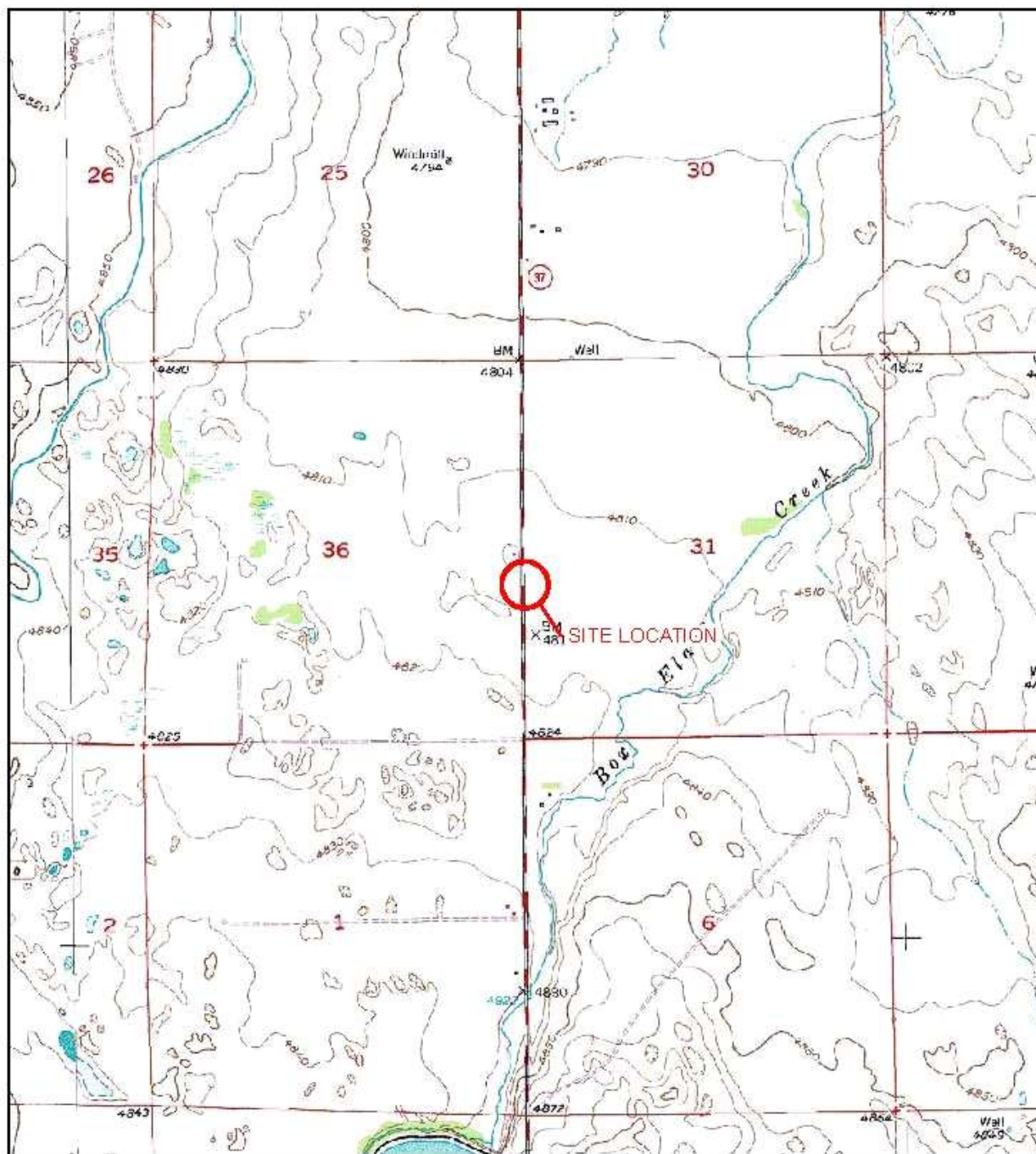
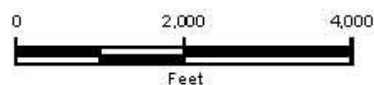


IMAGE COURTESY OF USDA/NRCS, VARIOUS DATES



LEGEND


 SITE LOCATION

FIGURE 1
SITE LOCATION MAP
DECHANT 1-31A
SWSW-31-T3N-R64W
WELD COUNTY, CO
PETROLEUM DEVELOPMENT CORPORATION



P:\PROJECTS\6005\SL.mxd

