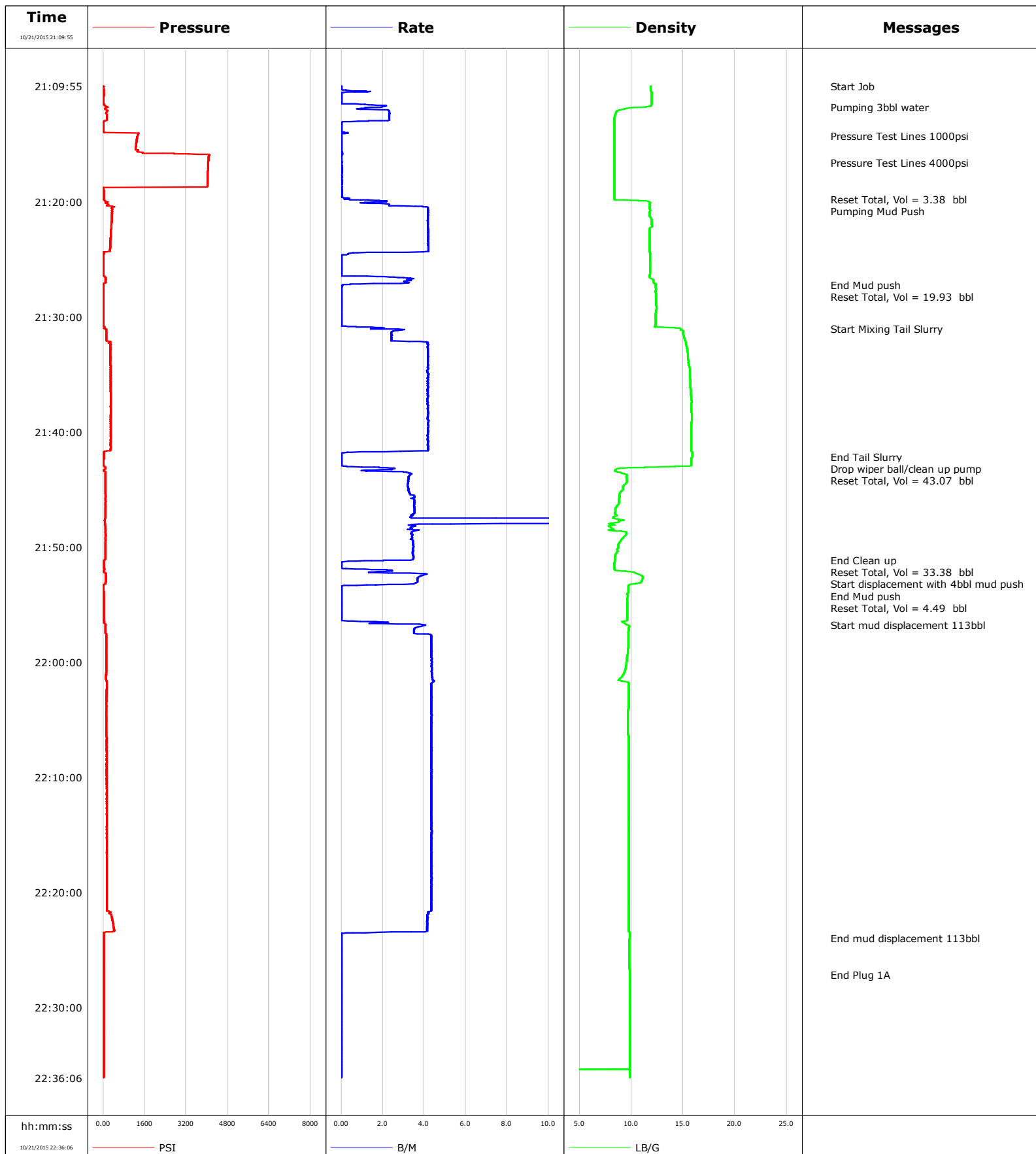


Well	Thermo	Client	Anadarko
Field	Wattenberg	SIR No.	CWJN-01443
Engineer	Chris Valerio/Taylor Baird	Job Type	PA
Country	United States	Job Date	10-21-2015



Cementing Service Report

				Customer Anadarko			Job Number CWJN-01443				
Well Thermo 38N-33HZ			Location (legal)			Schlumberger Location			Job Start Oct/21/2015		
Field Wattenberg		Formation Name/Type Shale		Deviation deg		Bit Size 8.8 in		Well MD 7872.0 ft		Well TVD 7865.0 ft	
County Weld		State/Province Colorado		BHP psi		BHST 226 degF		BHCT 177 degF		Pore Press. Gradient lb/gal	
Well Master 0631652607		API/UWI 05123420970000									
Rig Name Xtreme #24		Drilled For Oil		Service Via Land		Casing/ Liner					
						Depth, ft		Size, in		Weight, lb/ft	
Offshore Zone		Well Class Old		Well Type Development		1883.0		9.6		36.0	
						0.0		0.0		0.0	
Drilling Fluid Type Other		Max. Density 9.80 lb/gal		Plastic Viscosity cP		Tubing/Drill Pipe					
						T/D		Depth, ft		Size, in	
Service Line Cementing		Job Type P&A				D		7072.0		5.0	
						T		7872.0		2.9	
Max. Allowed Tub. Press 3500 psi		Max. Allowed Ann. Press psi		WH Connection 5" IF DP pin		Perforations/Open Hole					
						Top, ft		Bottom, ft		shot/ft	
						ft		ft			
						ft		ft			
						ft		ft			
						Treat Down Drill Pipe		Displacement 113.0 bbl		Packer Type	
										Packer Depth ft	
						Tubing Vol. 130.0 bbl		Casing Vol. bbl		Annular Vol. bbl	
										Openhole Vol. bbl	
Casing/Tubing Secured <input checked="" type="checkbox"/>		1 Hole Vol. Circulated prior to Cement <input checked="" type="checkbox"/>		Casing Tools				Squeeze Job			
Lift Pressure psi				Shoe Type				Squeeze Type			
Pipe Rotated <input type="checkbox"/>		Pipe Reciprocated <input type="checkbox"/>		Shoe Depth ft				Tool Type			
No. Centralizers		Top Plugs		Bottom Plugs		Stage Tool Type				Tool Depth ft	
Cement Head Type						Stage Tool Depth ft				Tail Pipe Size in	
Job Scheduled For Oct/21/2015 11:00		Arrived on Location Oct/21/2015 11:00		Leave Location Oct/22/2015 06:00		Collar Type				Tail Pipe Depth ft	
						Collar Depth ft				Sqz. Total Vol. bbl	
Date	Time 24-hr clock	Treating Pressure PSI	Flow Rate B/M	Density LB/G	Volume BBL	Message					
10/21/2015	21:09:55	20	0.0	11.85	0.0	Started Acquisition					
10/21/2015	21:09:56	19	0.0	11.85	0.0	Start Job					
10/21/2015	21:11:46	185	1.9	11.06	0.4	Pumping 3bbl water					
10/21/2015	21:14:16	1325	0.0	8.38	3.1	Pressure Test Lines 1000psi					
10/21/2015	21:14:55	1277	0.0	8.38	3.1						
10/21/2015	21:16:36	4053	0.0	8.38	3.1	Pressure Test Lines 4000psi					
10/21/2015	21:19:45	26	0.2	8.38	3.2	Reset Total, Vol = 3.38 bbl					
10/21/2015	21:19:55	72	2.1	11.23	3.4						
10/21/2015	21:20:00	191	2.0	11.73	3.5	Pumping Mud Push					
10/21/2015	21:24:55	15	0.0	11.80	21.1						
10/21/2015	21:27:14	16	0.1	12.36	23.2	End Mud push					
10/21/2015	21:27:18	15	0.0	12.37	23.2	Reset Total, Vol = 19.93 bbl					
10/21/2015	21:29:55	17	0.0	12.35	23.2						
10/21/2015	21:31:00	39	1.6	14.76	23.4	Start Mixing Tail Slurry					
10/21/2015	21:34:55	282	4.2	15.64	37.7						
10/21/2015	21:39:55	293	4.2	15.79	58.6						
10/21/2015	21:42:09	21	0.0	15.87	66.2	End Tail Slurry					
10/21/2015	21:42:32	17	0.0	15.79	66.2	Drop wiper ball/clean up pump					
10/21/2015	21:43:03	82	1.6	11.76	66.2	Reset Total, Vol = 43.07 bbl					
10/21/2015	21:44:55	87	3.2	9.18	71.7						
10/21/2015	21:49:55	91	3.5	8.74	95.2						

Well Thermo 38N-33HZ			Field Wattenberg		Job Start Oct/21/2015	Customer Anadarko		Job Number CWJN-01443
Date	Time 24-hr clock	Treating Pressure PSI	Flow Rate B/M	Density LB/G	Volume BBL	Message		
10/21/2015	21:51:34	22	0.0	8.39	99.6	Reset Total, Vol = 33.38 bbl		
10/21/2015	21:52:16	98	3.3	10.45	100.3	Start displacement with 4bbl mud push		
10/21/2015	21:53:19	18	0.8	9.76	104.1	End Mud push		
10/21/2015	21:53:22	18	0.0	9.73	104.1	Reset Total, Vol = 4.49 bbl		
10/21/2015	21:54:55	20	0.0	9.62	104.1			
10/21/2015	21:56:47	93	4.1	9.69	104.9	Start mud displacement 113bbl		
10/21/2015	21:59:55	123	4.4	9.55	117.9			
10/21/2015	22:04:55	130	4.3	9.68	139.7			
10/21/2015	22:09:55	134	4.3	9.77	161.5			
10/21/2015	22:14:55	139	4.4	9.78	183.2			
10/21/2015	22:19:55	140	4.4	9.78	205.0			
10/21/2015	22:23:59	32	0.0	9.83	220.1	End mud displacement 113bbl		
10/21/2015	22:24:55	32	0.0	9.81	220.1			
10/21/2015	22:27:10	31	0.0	9.84	220.1	End Plug 1A		
10/21/2015	22:29:55	31	0.0	9.85	220.1			

Post Job Summary

Average Pump Rates, bbl/min					Volume of Fluid Injected, bbl			
Slurry 3.4	N2	Mud	Maximum Rate 4.5	Total Slurry 44.4	Mud 0.0	Spacer 24.0	N2	
Treating Pressure Summary, psi					Breakdown Fluid			
Maximum 4105	Final 33	Average 279	Bump Plug to	Breakdown	Type	Volume bbl	Density lb/gal	
Avg. N2 Percent %		Designed Slurry Volume 44.4 bbl		Displacement 113.0 bbl	Mix Water Temp 55 degF	Cement Circulated to Surface? <input type="checkbox"/>	Volume bbl	
						Washed Thru Perfs <input type="checkbox"/>	To ft	
Customer or Authorized Representative Tobin Sinclair			Schlumberger Supervisor Chris Valerio/Taylor Baird			Circulation Lost <input type="checkbox"/>	Job Completed <input checked="" type="checkbox"/>	
						-	-	