

# **PDC ENERGY**

**WELD COUNTY, COLORADO  
NW SW SEC. 17 T5N R64W 6th P.M.  
CECIL'S KERSEY FARM 17K-332**

## **ORIGINAL WELLBORE**

**16 September, 2015**

**Plan: PROPOSAL #2**





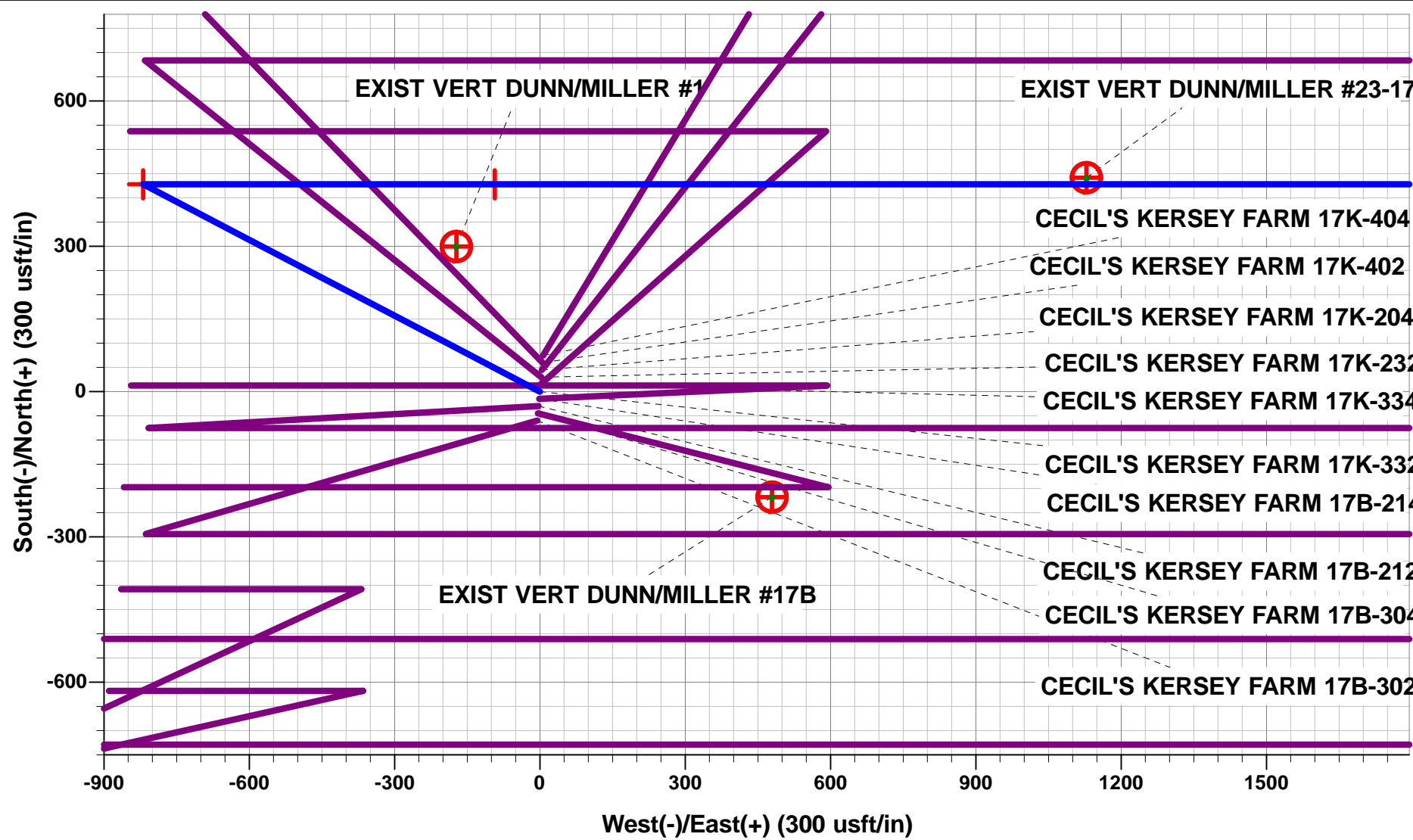
Project: WELD COUNTY, COLORADO  
Site: NW SW SEC. 17 T5N R64W 6th P.M.  
Well: CECIL'S KERSEY FARM 17K-332  
Wellbore: ORIGINAL WELLBORE  
Design: PROPOSAL #2

ANNOTATIONS

TVD	MD	Inc	Azi	+N/-S	+E/-W	Vsect	Dep	Annotation
1550.0	1550.0	0.00	0.00	0.0	0.0	0.0	0.0	START NUDGE (2°/100ft BUR)
2227.1	2233.6	13.67	297.59	37.6	-71.9	-67.5	81.2	EOB TO 13.67° INC
5358.7	5456.5	13.67	297.59	390.4	-747.1	-700.8	843.0	END OF TANGENT
6035.9	6140.2	0.00	0.00	428.0	-819.1	-768.3	924.2	EOD TO VERTICAL
6065.9	6170.2	0.00	0.00	428.0	-819.1	-768.3	924.2	KOP (8°/100ft BUR)
6782.0	7304.9	90.78	90.00	428.0	-93.2	-46.5	1650.1	7" ICP *NEW* - CECIL'S KERSEY FARM 17K-332 (P2)
6727.0	11351.6	90.78	90.00	428.0	3953.2	3976.3	5696.4	BHL - CECIL'S KERSEY FARM 17K-332 (P2)

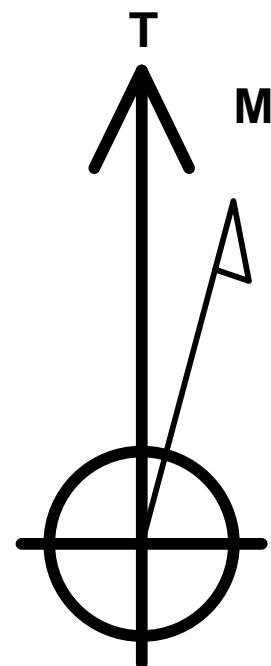
WELLBORE TARGET DETAILS (LAT/LONG)

Name	TVD	+N/-S	+E/-W	Latitude	Longitude
KOP - CECIL'S KERSEY FARM 17K-332 (P2)	6065.9	428.0	-819.1	40.397713	-104.583352
7" ICP *NEW* - CECIL'S KERSEY FARM 17K-332 (P2)	6782.0	428.0	-93.2	40.397713	-104.580746
BHL - CECIL'S KERSEY FARM 17K-332 (P2)	6727.0	428.0	3953.2	40.397712	-104.566218



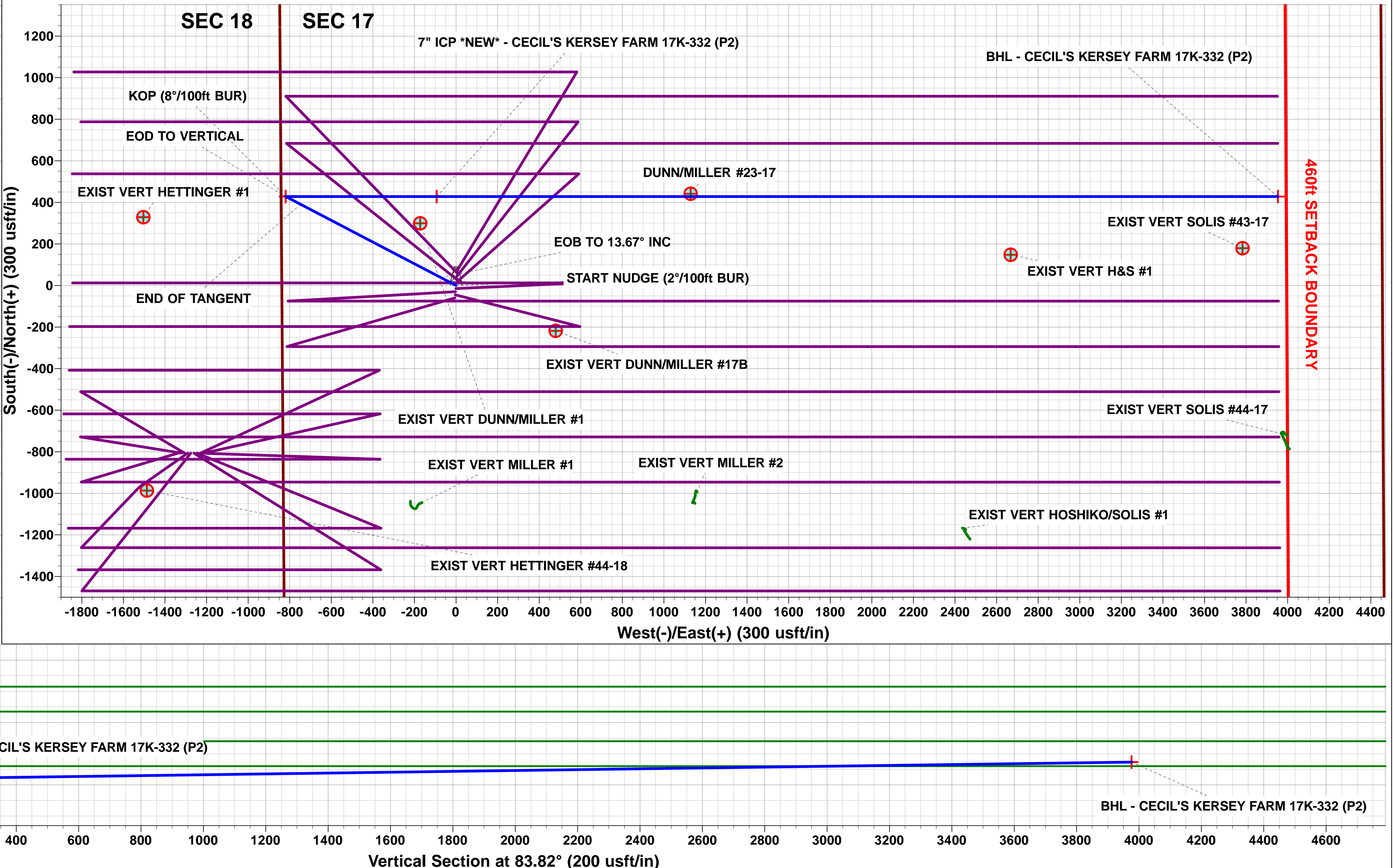
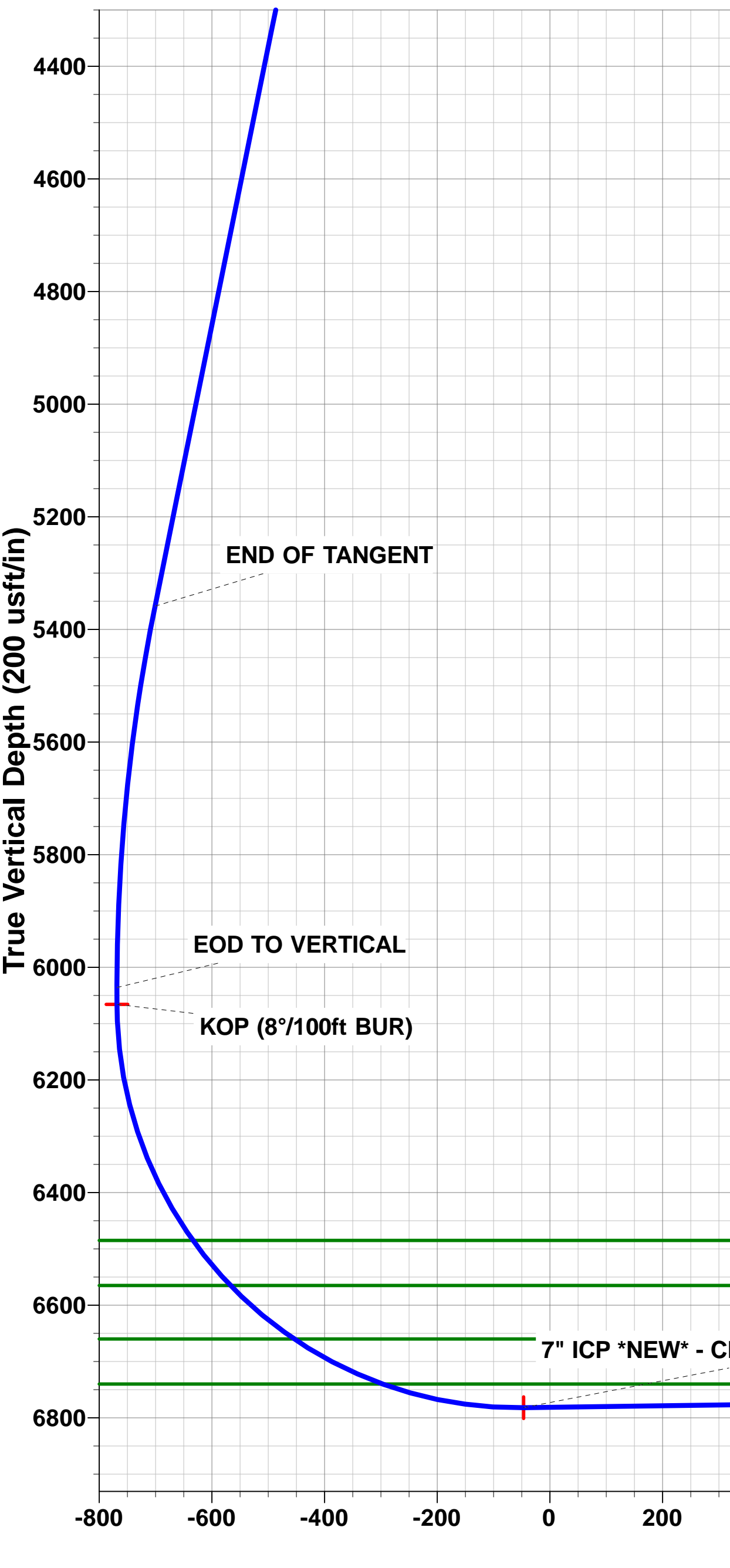
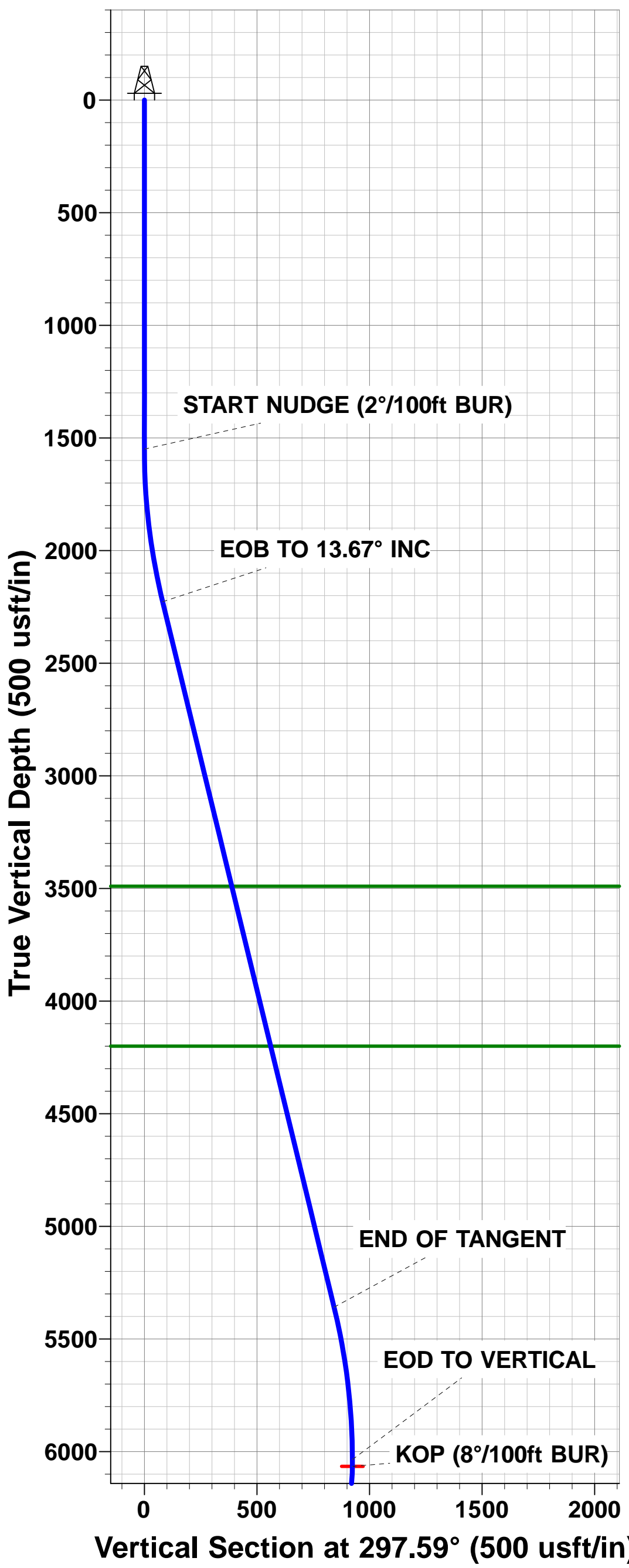
PROPOSED LOCAL COORDINATES:

SHL: 1680ft FSL & 838ft FWL of Sec 17  
7" ICP \*NEW\*: 2109ft FSL & 747.5ft FWL of Sec 17  
BHL: 2065ft FSL & 500ft FEL of Sec 17



Azimuths to True North  
Magnetic North: 8.30°

Magnetic Field  
Strength: 52614.6snT  
Dip Angle: 66.93°  
Date: 06/09/2015  
Model: IGRF2015



# Planning Report



<b>Database:</b>	EDM 5000.1 Single User Db	<b>Local Co-ordinate Reference:</b>	Well CECIL'S KERSEY FARM 17K-332
<b>Company:</b>	PDC ENERGY	<b>TVD Reference:</b>	KB-EST @ 4636.0usft (Original Well Elev)
<b>Project:</b>	WELD COUNTY, COLORADO	<b>MD Reference:</b>	KB-EST @ 4636.0usft (Original Well Elev)
<b>Site:</b>	NW SW SEC. 17 T5N R64W 6th P.M.	<b>North Reference:</b>	True
<b>Well:</b>	CECIL'S KERSEY FARM 17K-332	<b>Survey Calculation Method:</b>	Minimum Curvature
<b>Wellbore:</b>	ORIGINAL WELLBORE		
<b>Design:</b>	PROPOSAL #2		

<b>Project</b>	WELD COUNTY, COLORADO		
<b>Map System:</b>	US State Plane 1983	<b>System Datum:</b>	Mean Sea Level
<b>Geo Datum:</b>	North American Datum 1983		
<b>Map Zone:</b>	Colorado Northern Zone		Using geodetic scale factor

<b>Site</b>	NW SW SEC. 17 T5N R64W 6th P.M.		
<b>Site Position:</b>		<b>Northing:</b>	1,388,702.00 usft
<b>From:</b>	Lat/Long	<b>Easting:</b>	3,256,129.74 usft
<b>Position Uncertainty:</b>	0.0 usft	<b>Slot Radius:</b>	1.10000ft
		<b>Latitude:</b>	40.396743
		<b>Longitude:</b>	-104.580386
		<b>Grid Convergence:</b>	0.59 °

<b>Well</b>	CECIL'S KERSEY FARM 17K-332		
<b>Well Position</b>	<b>+N/-S</b>	-74.7 usft	<b>Northing:</b>
	<b>+E/-W</b>	-7.0 usft	<b>Easting:</b>
<b>Position Uncertainty</b>	0.0 usft	<b>Wellhead Elevation:</b>	usft
		<b>Latitude:</b>	40.396538
		<b>Longitude:</b>	-104.580411
		<b>Ground Level:</b>	4,623.0 usft

<b>Wellbore</b>	ORIGINAL WELLBORE				
<b>Magnetics</b>	<b>Model Name</b>	<b>Sample Date</b>	<b>Declination (°)</b>	<b>Dip Angle (°)</b>	<b>Field Strength (nT)</b>
	IGRF2015	06/09/2015	8.30	66.93	52,615

<b>Design</b>	PROPOSAL #2			
<b>Audit Notes:</b>				
<b>Version:</b>	<b>Phase:</b>	PROTOTYPE	<b>Tie On Depth:</b>	0.0
<b>Vertical Section:</b>	<b>Depth From (TVD) (usft)</b>	<b>+N/-S (usft)</b>	<b>+E/-W (usft)</b>	<b>Direction (°)</b>
	6,727.0	0.0	0.0	83.82

<b>Plan Sections</b>											
MD (usft)	Inc (°)	Azi (°)	Vertical Depth	SS (usft)	+N/-S (usft)	+E/-W (usft)	Dogleg Rate (°/100usf)	Build Rate (°/100usf)	Turn Rate (°/100usf)	TFO (°)	Target
0.0	0.00	0.00	0.0	-4,636.0	0.0	0.0	0.00	0.00	0.00	0.00	
1,550.0	0.00	0.00	1,550.0	-3,086.0	0.0	0.0	0.00	0.00	0.00	0.00	
2,233.6	13.67	297.59	2,227.2	-2,408.8	37.6	-72.0	2.00	2.00	0.00	297.59	
5,456.5	13.67	297.59	5,358.7	722.7	390.4	-747.1	0.00	0.00	0.00	0.00	
6,140.2	0.00	0.00	6,035.9	1,399.9	428.0	-819.1	2.00	-2.00	0.00	180.00	
6,170.2	0.00	0.00	6,065.9	1,429.9	428.0	-819.1	0.00	0.00	0.00	0.00	KOP - CECIL'S KEI
7,304.9	90.78	90.00	6,782.0	2,146.0	428.0	-93.2	8.00	8.00	7.93	90.00	7" ICP *NEW* - CEI
11,351.6	90.78	90.00	6,727.0	2,091.0	428.0	3,953.2	0.00	0.00	0.00	0.00	BHL - CECIL'S KEF

# Planning Report



<b>Database:</b>	EDM 5000.1 Single User Db	<b>Local Co-ordinate Reference:</b>	Well CECIL'S KERSEY FARM 17K-332
<b>Company:</b>	PDC ENERGY	<b>TVD Reference:</b>	KB-EST @ 4636.0usft (Original Well Elev)
<b>Project:</b>	WELD COUNTY, COLORADO	<b>MD Reference:</b>	KB-EST @ 4636.0usft (Original Well Elev)
<b>Site:</b>	NW SW SEC. 17 T5N R64W 6th P.M.	<b>North Reference:</b>	True
<b>Well:</b>	CECIL'S KERSEY FARM 17K-332	<b>Survey Calculation Method:</b>	Minimum Curvature
<b>Wellbore:</b>	ORIGINAL WELLBORE		
<b>Design:</b>	PROPOSAL #2		

## Planned Survey

MD (usft)	Inc (°)	Azi (°)	TVD (usft)	SS (usft)	+N/-S (usft)	+E/-W (usft)	Vertical Section (usft)	Dogleg Rate (°/100usft)	Build Rate (°/100usft)	Turn Rate (°/100usft)
0.0	0.00	0.00	0.0	4,636.00	0.0	0.0	0.0	0.00	0.00	0.00
100.0	0.00	0.00	100.0	4,536.00	0.0	0.0	0.0	0.00	0.00	0.00
200.0	0.00	0.00	200.0	4,436.00	0.0	0.0	0.0	0.00	0.00	0.00
300.0	0.00	0.00	300.0	4,336.00	0.0	0.0	0.0	0.00	0.00	0.00
400.0	0.00	0.00	400.0	4,236.00	0.0	0.0	0.0	0.00	0.00	0.00
500.0	0.00	0.00	500.0	4,136.00	0.0	0.0	0.0	0.00	0.00	0.00
600.0	0.00	0.00	600.0	4,036.00	0.0	0.0	0.0	0.00	0.00	0.00
700.0	0.00	0.00	700.0	3,936.00	0.0	0.0	0.0	0.00	0.00	0.00
800.0	0.00	0.00	800.0	3,836.00	0.0	0.0	0.0	0.00	0.00	0.00
900.0	0.00	0.00	900.0	3,736.00	0.0	0.0	0.0	0.00	0.00	0.00
1,000.0	0.00	0.00	1,000.0	3,636.00	0.0	0.0	0.0	0.00	0.00	0.00
1,100.0	0.00	0.00	1,100.0	3,536.00	0.0	0.0	0.0	0.00	0.00	0.00
1,200.0	0.00	0.00	1,200.0	3,436.00	0.0	0.0	0.0	0.00	0.00	0.00
1,300.0	0.00	0.00	1,300.0	3,336.00	0.0	0.0	0.0	0.00	0.00	0.00
1,400.0	0.00	0.00	1,400.0	3,236.00	0.0	0.0	0.0	0.00	0.00	0.00
1,500.0	0.00	0.00	1,500.0	3,136.00	0.0	0.0	0.0	0.00	0.00	0.00
<b>START NUDGE (2°/100ft BUR)</b>										
1,550.0	0.00	0.00	1,550.0	3,086.00	0.0	0.0	0.0	0.00	0.00	0.00
1,600.0	1.00	297.59	1,600.0	3,036.00	0.2	-0.4	-0.4	2.00	2.00	0.00
1,700.0	3.00	297.59	1,699.9	2,936.07	1.8	-3.5	-3.3	2.00	2.00	0.00
1,800.0	5.00	297.59	1,799.7	2,836.32	5.0	-9.7	-9.1	2.00	2.00	0.00
1,900.0	7.00	297.59	1,899.1	2,736.87	9.9	-18.9	-17.8	2.00	2.00	0.00
2,000.0	9.00	297.59	1,998.2	2,637.85	16.3	-31.3	-29.3	2.00	2.00	0.00
2,100.0	11.00	297.59	2,096.6	2,539.37	24.4	-46.6	-43.8	2.00	2.00	0.00
2,200.0	13.00	297.59	2,194.4	2,441.56	34.0	-65.1	-61.0	2.00	2.00	0.00
<b>EOB TO 13.67° INC</b>										
2,233.6	13.67	297.59	2,227.1	2,408.87	37.6	-71.9	-67.5	2.00	2.00	0.00
2,300.0	13.67	297.59	2,291.6	2,344.35	44.9	-85.9	-80.5	0.00	0.00	0.00
2,400.0	13.67	297.59	2,388.8	2,247.18	55.8	-106.8	-100.2	0.00	0.00	0.00
2,500.0	13.67	297.59	2,486.0	2,150.02	66.8	-127.8	-119.8	0.00	0.00	0.00
2,600.0	13.67	297.59	2,583.1	2,052.85	77.7	-148.7	-139.5	0.00	0.00	0.00
2,700.0	13.67	297.59	2,680.3	1,955.69	88.6	-169.7	-159.1	0.00	0.00	0.00
2,800.0	13.67	297.59	2,777.5	1,858.52	99.6	-190.6	-178.8	0.00	0.00	0.00
2,900.0	13.67	297.59	2,874.6	1,761.35	110.5	-211.6	-198.4	0.00	0.00	0.00
3,000.0	13.67	297.59	2,971.8	1,664.19	121.5	-232.5	-218.1	0.00	0.00	0.00
3,100.0	13.67	297.59	3,069.0	1,567.02	132.4	-253.5	-237.7	0.00	0.00	0.00
3,200.0	13.67	297.59	3,166.1	1,469.85	143.4	-274.4	-257.4	0.00	0.00	0.00
3,300.0	13.67	297.59	3,263.3	1,372.69	154.3	-295.4	-277.0	0.00	0.00	0.00
3,400.0	13.67	297.59	3,360.5	1,275.52	165.3	-316.3	-296.7	0.00	0.00	0.00
3,500.0	13.67	297.59	3,457.6	1,178.36	176.2	-337.3	-316.3	0.00	0.00	0.00
<b>PARKMAN SANDSTONE</b>										
3,533.3	13.67	297.59	3,490.0	1,146.00	179.9	-344.2	-322.9	0.00	0.00	0.00
3,600.0	13.67	297.59	3,554.8	1,081.19	187.2	-358.2	-336.0	0.00	0.00	0.00
3,700.0	13.67	297.59	3,652.0	984.02	198.1	-379.2	-355.6	0.00	0.00	0.00
3,800.0	13.67	297.59	3,749.1	886.86	209.1	-400.1	-375.3	0.00	0.00	0.00
3,900.0	13.67	297.59	3,846.3	789.69	220.0	-421.1	-394.9	0.00	0.00	0.00
4,000.0	13.67	297.59	3,943.5	692.53	231.0	-442.0	-414.6	0.00	0.00	0.00
4,100.0	13.67	297.59	4,040.6	595.36	241.9	-463.0	-434.2	0.00	0.00	0.00
4,200.0	13.67	297.59	4,137.8	498.19	252.9	-483.9	-453.9	0.00	0.00	0.00
<b>SUSSEX SANDSTONE</b>										
4,264.0	13.67	297.59	4,200.0	436.00	259.9	-497.3	-466.5	0.00	0.00	0.00
4,300.0	13.67	297.59	4,235.0	401.03	263.8	-504.9	-473.5	0.00	0.00	0.00
4,400.0	13.67	297.59	4,332.1	303.86	274.7	-525.8	-493.2	0.00	0.00	0.00
4,500.0	13.67	297.59	4,429.3	206.69	285.7	-546.8	-512.8	0.00	0.00	0.00

# Planning Report



<b>Database:</b>	EDM 5000.1 Single User Db	<b>Local Co-ordinate Reference:</b>	Well CECIL'S KERSEY FARM 17K-332
<b>Company:</b>	PDC ENERGY	<b>TVD Reference:</b>	KB-EST @ 4636.0usft (Original Well Elev)
<b>Project:</b>	WELD COUNTY, COLORADO	<b>MD Reference:</b>	KB-EST @ 4636.0usft (Original Well Elev)
<b>Site:</b>	NW SW SEC. 17 T5N R64W 6th P.M.	<b>North Reference:</b>	True
<b>Well:</b>	CECIL'S KERSEY FARM 17K-332	<b>Survey Calculation Method:</b>	Minimum Curvature
<b>Wellbore:</b>	ORIGINAL WELLBORE		
<b>Design:</b>	PROPOSAL #2		

Planned Survey										
MD (usft)	Inc (°)	Azi (°)	TVD (usft)	SS (usft)	+N/-S (usft)	+E/-W (usft)	Vertical Section (usft)	Dogleg Rate (°/100usft)	Build Rate (°/100usft)	Turn Rate (°/100usft)
4,600.0	13.67	297.59	4,526.5	109.53	296.6	-567.7	-532.5	0.00	0.00	0.00
4,700.0	13.67	297.59	4,623.6	12.36	307.6	-588.7	-552.1	0.00	0.00	0.00
4,800.0	13.67	297.59	4,720.8	-84.80	318.5	-609.6	-571.8	0.00	0.00	0.00
4,900.0	13.67	297.59	4,818.0	-181.97	329.5	-630.6	-591.4	0.00	0.00	0.00
5,000.0	13.67	297.59	4,915.1	-279.14	340.4	-651.5	-611.1	0.00	0.00	0.00
5,100.0	13.67	297.59	5,012.3	-376.30	351.4	-672.5	-630.7	0.00	0.00	0.00
5,200.0	13.67	297.59	5,109.5	-473.47	362.3	-693.4	-650.4	0.00	0.00	0.00
5,300.0	13.67	297.59	5,206.6	-570.63	373.3	-714.4	-670.0	0.00	0.00	0.00
5,400.0	13.67	297.59	5,303.8	-667.80	384.2	-735.3	-689.7	0.00	0.00	0.00
<b>END OF TANGENT</b>										
<b>5,456.5</b>	<b>13.67</b>	<b>297.59</b>	<b>5,358.7</b>	<b>-722.70</b>	<b>390.4</b>	<b>-747.1</b>	<b>-700.8</b>	<b>0.00</b>	<b>0.00</b>	<b>0.00</b>
5,500.0	12.80	297.59	5,401.0	-765.04	395.0	-756.0	-709.1	2.00	-2.00	0.00
5,600.0	10.80	297.59	5,498.9	-862.92	404.5	-774.1	-726.1	2.00	-2.00	0.00
5,700.0	8.80	297.59	5,597.5	-961.46	412.4	-789.2	-740.2	2.00	-2.00	0.00
5,800.0	6.80	297.59	5,696.5	-1,060.53	418.7	-801.2	-751.5	2.00	-2.00	0.00
5,900.0	4.80	297.59	5,796.0	-1,160.01	423.3	-810.2	-759.9	2.00	-2.00	0.00
6,000.0	2.80	297.59	5,895.8	-1,259.78	426.4	-816.1	-765.4	2.00	-2.00	0.00
6,100.0	0.80	297.59	5,995.7	-1,359.73	427.9	-818.9	-768.0	2.00	-2.00	0.00
<b>EOD TO VERTICAL</b>										
<b>6,140.2</b>	<b>0.00</b>	<b>0.00</b>	<b>6,035.9</b>	<b>-1,399.93</b>	<b>428.0</b>	<b>-819.1</b>	<b>-768.3</b>	<b>2.00</b>	<b>-2.00</b>	<b>0.00</b>
<b>KOP (8°/100ft BUR)</b>										
<b>6,170.2</b>	<b>0.00</b>	<b>0.00</b>	<b>6,065.9</b>	<b>-1,429.93</b>	<b>428.0</b>	<b>-819.1</b>	<b>-768.3</b>	<b>0.00</b>	<b>0.00</b>	<b>0.00</b>
6,200.0	2.39	90.00	6,095.7	-1,459.72	428.0	-818.5	-767.7	8.01	8.01	0.00
6,300.0	10.39	90.00	6,195.0	-1,559.02	428.0	-807.4	-756.6	8.00	8.00	0.00
6,400.0	18.39	90.00	6,291.8	-1,655.80	428.0	-782.5	-731.9	8.00	8.00	0.00
6,500.0	26.39	90.00	6,384.2	-1,748.19	428.0	-744.5	-694.1	8.00	8.00	0.00
6,600.0	34.39	90.00	6,470.4	-1,834.38	428.0	-693.9	-643.8	8.00	8.00	0.00
<b>SHARON SPRINGS</b>										
<b>6,617.9</b>	<b>35.82</b>	<b>90.00</b>	<b>6,485.0</b>	<b>-1,849.00</b>	<b>428.0</b>	<b>-683.7</b>	<b>-633.6</b>	<b>8.00</b>	<b>8.00</b>	<b>0.00</b>
6,700.0	42.39	90.00	6,548.7	-1,912.70	428.0	-631.9	-582.1	8.00	8.00	0.00
<b>NIOBRARA A</b>										
<b>6,722.4</b>	<b>44.18</b>	<b>90.00</b>	<b>6,565.0</b>	<b>-1,929.00</b>	<b>428.0</b>	<b>-616.5</b>	<b>-566.9</b>	<b>8.00</b>	<b>8.00</b>	<b>0.00</b>
6,800.0	50.39	90.00	6,617.6	-1,981.62	428.0	-559.5	-510.2	8.00	8.00	0.00
<b>NIOBRARA B</b>										
<b>6,870.8</b>	<b>56.05</b>	<b>90.00</b>	<b>6,660.0</b>	<b>-2,024.00</b>	<b>428.0</b>	<b>-502.9</b>	<b>-453.9</b>	<b>8.00</b>	<b>8.00</b>	<b>0.00</b>
6,900.0	58.39	90.00	6,675.8	-2,039.80	428.0	-478.3	-429.5	8.00	8.00	0.00
7,000.0	66.39	90.00	6,722.1	-2,086.11	428.0	-389.8	-341.4	8.00	8.00	0.00
<b>NIOBRARA C</b>										
<b>7,048.4</b>	<b>70.26</b>	<b>90.00</b>	<b>6,740.0</b>	<b>-2,104.00</b>	<b>428.0</b>	<b>-344.8</b>	<b>-296.7</b>	<b>8.00</b>	<b>8.00</b>	<b>0.00</b>
7,100.0	74.39	90.00	6,755.6	-2,119.65	428.0	-295.7	-247.9	8.00	8.00	0.00
7,200.0	82.39	90.00	6,775.8	-2,139.76	428.0	-197.8	-150.6	8.00	8.00	0.00
7,300.0	90.39	90.00	6,782.0	-2,146.05	428.0	-98.1	-51.4	8.00	8.00	0.00
<b>7" ICP *NEW* - CECIL'S KERSEY FARM 17K-332 (P2)</b>										
<b>7,304.9</b>	<b>90.78</b>	<b>90.00</b>	<b>6,782.0</b>	<b>-2,146.00</b>	<b>428.0</b>	<b>-93.2</b>	<b>-46.5</b>	<b>7.93</b>	<b>7.93</b>	<b>0.00</b>
7,400.0	90.78	90.00	6,780.7	-2,144.71	428.0	1.9	48.0	0.00	0.00	0.00
7,500.0	90.78	90.00	6,779.3	-2,143.35	428.0	101.9	147.4	0.00	0.00	0.00
7,600.0	90.78	90.00	6,778.0	-2,141.99	428.0	201.9	246.8	0.00	0.00	0.00
7,700.0	90.78	90.00	6,776.6	-2,140.63	428.0	301.9	346.2	0.00	0.00	0.00
7,800.0	90.78	90.00	6,775.3	-2,139.27	428.0	401.9	445.6	0.00	0.00	0.00
7,900.0	90.78	90.00	6,773.9	-2,137.91	428.0	501.9	545.0	0.00	0.00	0.00
8,000.0	90.78	90.00	6,772.6	-2,136.55	428.0	601.9	644.5	0.00	0.00	0.00
8,100.0	90.78	90.00	6,771.2	-2,135.19	428.0	701.9	743.9	0.00	0.00	0.00
8,200.0	90.78	90.00	6,769.8	-2,133.83	428.0	801.9	843.3	0.00	0.00	0.00



# Planning Report



<b>Database:</b>	EDM 5000.1 Single User Db	<b>Local Co-ordinate Reference:</b>	Well CECIL'S KERSEY FARM 17K-332
<b>Company:</b>	PDC ENERGY	<b>TVD Reference:</b>	KB-EST @ 4636.0usft (Original Well Elev)
<b>Project:</b>	WELD COUNTY, COLORADO	<b>MD Reference:</b>	KB-EST @ 4636.0usft (Original Well Elev)
<b>Site:</b>	NW SW SEC. 17 T5N R64W 6th P.M.	<b>North Reference:</b>	True
<b>Well:</b>	CECIL'S KERSEY FARM 17K-332	<b>Survey Calculation Method:</b>	Minimum Curvature
<b>Wellbore:</b>	ORIGINAL WELLBORE		
<b>Design:</b>	PROPOSAL #2		

Planned Survey										
MD (usft)	Inc (°)	Azi (°)	TVD (usft)	SS (usft)	+N/-S (usft)	+E/-W (usft)	Vertical Section (usft)	Dogleg Rate (°/100usft)	Build Rate (°/100usft)	Turn Rate (°/100usft)
8,300.0	90.78	90.00	6,768.5	-2,132.47	428.0	901.9	942.7	0.00	0.00	0.00
8,400.0	90.78	90.00	6,767.1	-2,131.12	428.0	1,001.8	1,042.1	0.00	0.00	0.00
8,500.0	90.78	90.00	6,765.8	-2,129.76	428.0	1,101.8	1,141.5	0.00	0.00	0.00
8,600.0	90.78	90.00	6,764.4	-2,128.40	428.0	1,201.8	1,240.9	0.00	0.00	0.00
8,700.0	90.78	90.00	6,763.0	-2,127.04	428.0	1,301.8	1,340.3	0.00	0.00	0.00
8,800.0	90.78	90.00	6,761.7	-2,125.68	428.0	1,401.8	1,439.7	0.00	0.00	0.00
8,900.0	90.78	90.00	6,760.3	-2,124.32	428.0	1,501.8	1,539.1	0.00	0.00	0.00
9,000.0	90.78	90.00	6,759.0	-2,122.96	428.0	1,601.8	1,638.6	0.00	0.00	0.00
9,100.0	90.78	90.00	6,757.6	-2,121.60	428.0	1,701.8	1,738.0	0.00	0.00	0.00
9,200.0	90.78	90.00	6,756.2	-2,120.24	428.0	1,801.8	1,837.4	0.00	0.00	0.00
9,300.0	90.78	90.00	6,754.9	-2,118.88	428.0	1,901.8	1,936.8	0.00	0.00	0.00
9,400.0	90.78	90.00	6,753.5	-2,117.52	428.0	2,001.8	2,036.2	0.00	0.00	0.00
9,500.0	90.78	90.00	6,752.2	-2,116.16	428.0	2,101.7	2,135.6	0.00	0.00	0.00
9,600.0	90.78	90.00	6,750.8	-2,114.81	428.0	2,201.7	2,235.0	0.00	0.00	0.00
9,700.0	90.78	90.00	6,749.4	-2,113.45	428.0	2,301.7	2,334.4	0.00	0.00	0.00
9,800.0	90.78	90.00	6,748.1	-2,112.09	428.0	2,401.7	2,433.8	0.00	0.00	0.00
9,900.0	90.78	90.00	6,746.7	-2,110.73	428.0	2,501.7	2,533.2	0.00	0.00	0.00
10,000.0	90.78	90.00	6,745.4	-2,109.37	428.0	2,601.7	2,632.6	0.00	0.00	0.00
10,100.0	90.78	90.00	6,744.0	-2,108.01	428.0	2,701.7	2,732.1	0.00	0.00	0.00
10,200.0	90.78	90.00	6,742.7	-2,106.65	428.0	2,801.7	2,831.5	0.00	0.00	0.00
10,300.0	90.78	90.00	6,741.3	-2,105.29	428.0	2,901.7	2,930.9	0.00	0.00	0.00
10,400.0	90.78	90.00	6,739.9	-2,103.93	428.0	3,001.7	3,030.3	0.00	0.00	0.00
10,500.0	90.78	90.00	6,738.6	-2,102.57	428.0	3,101.6	3,129.7	0.00	0.00	0.00
10,600.0	90.78	90.00	6,737.2	-2,101.21	428.0	3,201.6	3,229.1	0.00	0.00	0.00
10,700.0	90.78	90.00	6,735.9	-2,099.85	428.0	3,301.6	3,328.5	0.00	0.00	0.00
10,800.0	90.78	90.00	6,734.5	-2,098.50	428.0	3,401.6	3,427.9	0.00	0.00	0.00
10,900.0	90.78	90.00	6,733.1	-2,097.14	428.0	3,501.6	3,527.3	0.00	0.00	0.00
11,000.0	90.78	90.00	6,731.8	-2,095.78	428.0	3,601.6	3,626.7	0.00	0.00	0.00
11,100.0	90.78	90.00	6,730.4	-2,094.42	428.0	3,701.6	3,726.2	0.00	0.00	0.00
11,200.0	90.78	90.00	6,729.1	-2,093.06	428.0	3,801.6	3,825.6	0.00	0.00	0.00
11,300.0	90.78	90.00	6,727.7	-2,091.70	428.0	3,901.6	3,925.0	0.00	0.00	0.00
<b>BHL - CECIL'S KERSEY FARM 17K-332 (P2)</b>										
<b>11,351.6</b>	<b>90.78</b>	<b>90.00</b>	<b>6,727.0</b>	<b>-2,091.00</b>	<b>428.0</b>	<b>3,953.2</b>	<b>3,976.3</b>	<b>0.00</b>	<b>0.00</b>	<b>0.00</b>

Formations						
MD (usft)	TVD (usft)	Name	Lithology	Dip (°)	Dip Direction (°)	
3,533.3	3,490.0	PARKMAN SANDSTONE				
4,264.0	4,200.0	SUSSEX SANDSTONE				
6,617.9	6,485.0	SHARON SPRINGS				
6,722.4	6,565.0	NIOBRARA A				
6,870.8	6,660.0	NIOBRARA B				
7,048.4	6,740.0	NIOBRARA C				

# Planning Report



<b>Database:</b>	EDM 5000.1 Single User Db	<b>Local Co-ordinate Reference:</b>	Well CECIL'S KERSEY FARM 17K-332
<b>Company:</b>	PDC ENERGY	<b>TVD Reference:</b>	KB-EST @ 4636.0usft (Original Well Elev)
<b>Project:</b>	WELD COUNTY, COLORADO	<b>MD Reference:</b>	KB-EST @ 4636.0usft (Original Well Elev)
<b>Site:</b>	NW SW SEC. 17 T5N R64W 6th P.M.	<b>North Reference:</b>	True
<b>Well:</b>	CECIL'S KERSEY FARM 17K-332	<b>Survey Calculation Method:</b>	Minimum Curvature
<b>Wellbore:</b>	ORIGINAL WELLBORE		
<b>Design:</b>	PROPOSAL #2		

## Plan Annotations

MD (usft)	TVD (usft)	Local Coordinates		Comment
		+N/-S (usft)	+E/-W (usft)	
1,550.0	1,550.0	0.0	0.0	START NUDGE (2°/100ft BUR)
2,233.6	2,227.1	37.6	-71.9	EOB TO 13.67° INC
5,456.5	5,358.7	390.4	-747.1	END OF TANGENT
6,140.2	6,035.9	428.0	-819.1	EOD TO VERTICAL
6,170.2	6,065.9	428.0	-819.1	KOP (8°/100ft BUR)
7,304.9	6,782.0	428.0	-93.2	7" ICP *NEW* - CECIL'S KERSEY FARM 17K-332 (P2)
11,351.6	6,727.0	428.0	3,953.2	BHL - CECIL'S KERSEY FARM 17K-332 (P2)