

PDC ENERGY

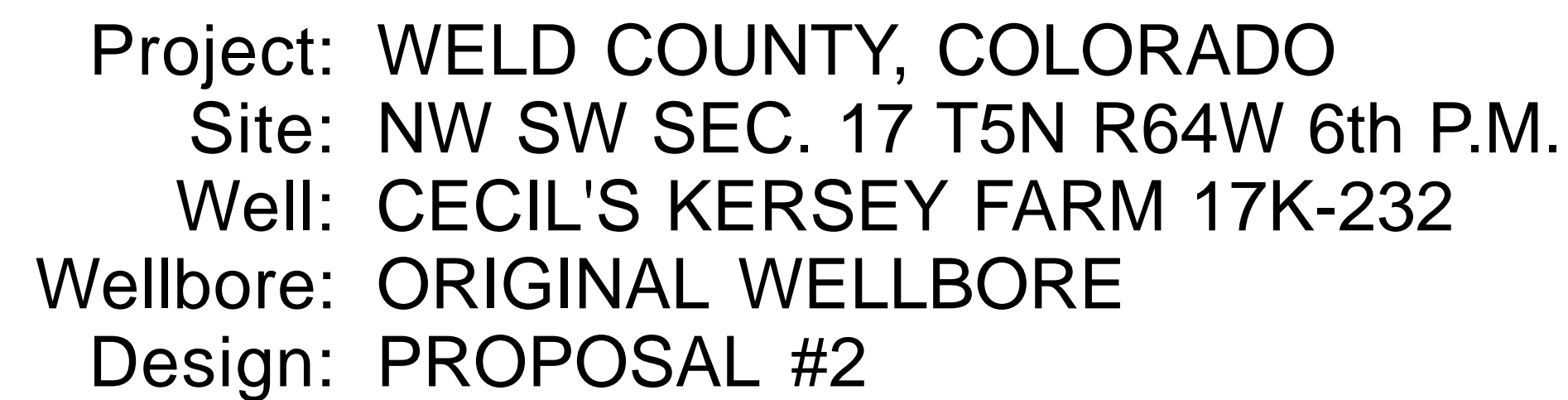
**WELD COUNTY, COLORADO
NW SW SEC. 17 T5N R64W 6th P.M.
CECIL'S KERSEY FARM 17K-232**

ORIGINAL WELLBORE

15 September, 2015

Plan: PROPOSAL #2





PROPOSED LOCAL COORDINATES:

SHL: 1710ft FSL & 841ft FWL of Sec 17

7" ICP *NEW*: 2364.7ft FSL & 747.5ft FWL of Sec 17

BHL: 2321ft FSL & 500ft FEL of Sec 17

Magnetic Field
Strength: 52614.6snT
Dip Angle: 66.93°
Date: 06/09/2015
Model: IGRF2015

EXIST VERT DUNN/MILLER #23-17

EXIST VERT DUNN/MILLER #1

EXIST VERT DUNN/MILLER #17B

CECIL'S KERSEY FARM 17K-404

CECIL'S KERSEY FARM 17K-402

CECIL'S KERSEY FARM 17K-204

CECIL'S KERSEY FARM 17K-232

CECIL'S KERSEY FARM 17K-334

CECIL'S KERSEY FARM 17K-332

CECIL'S KERSEY FARM 17B-214

CECIL'S KERSEY FARM 17B-212

CECIL'S KERSEY FARM 17B-304

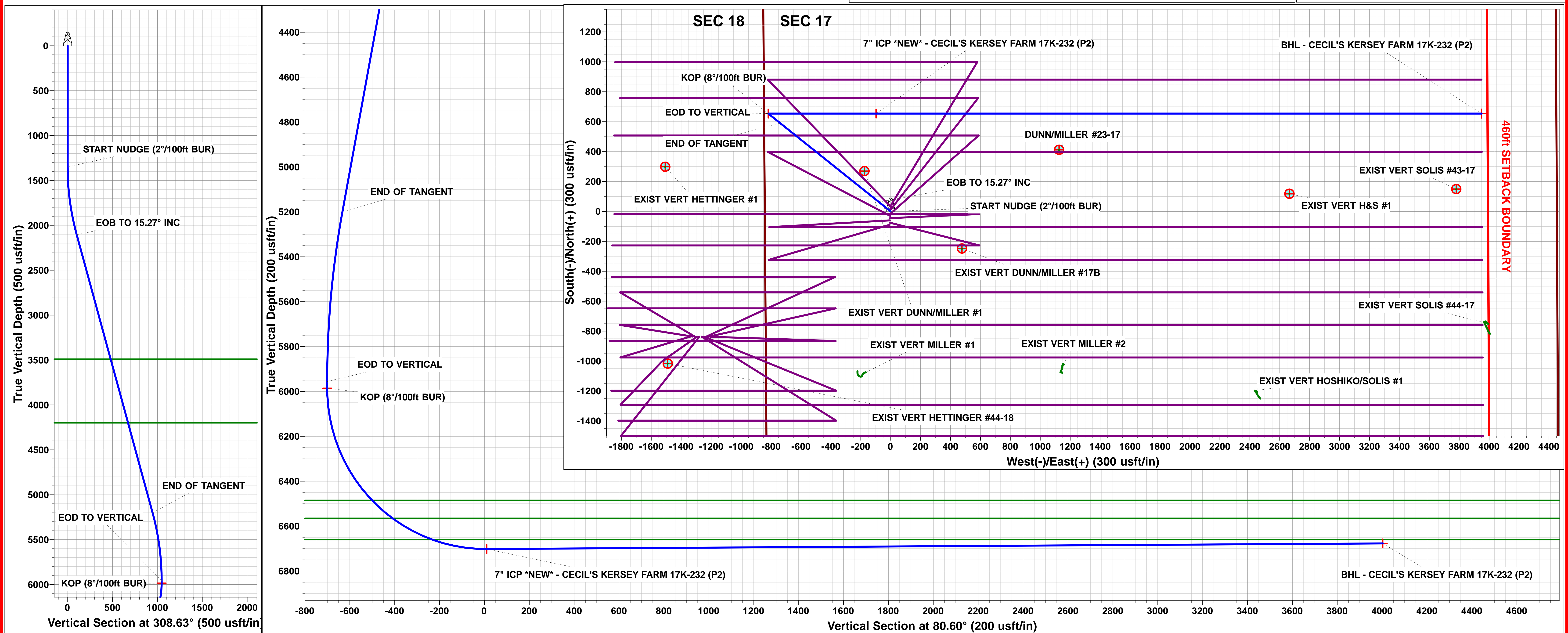
CECIL'S KERSEY FARM 17B-302

South(-)/North(+) (300 usft/in)

West(-)/East(+) (300 usft/in)

T

M



Planning Report



Database:	EDM 5000.1 Single User Db	Local Co-ordinate Reference:	Well CECIL'S KERSEY FARM 17K-232
Company:	PDC ENERGY	TVD Reference:	KB-EST @ 4636.0usft (Original Well Elev)
Project:	WELD COUNTY, COLORADO	MD Reference:	KB-EST @ 4636.0usft (Original Well Elev)
Site:	NW SW SEC. 17 T5N R64W 6th P.M.	North Reference:	True
Well:	CECIL'S KERSEY FARM 17K-232	Survey Calculation Method:	Minimum Curvature
Wellbore:	ORIGINAL WELLBORE		
Design:	PROPOSAL #2		

Project	WELD COUNTY, COLORADO		
Map System:	US State Plane 1983	System Datum:	Mean Sea Level
Geo Datum:	North American Datum 1983		
Map Zone:	Colorado Northern Zone		Using geodetic scale factor

Site	NW SW SEC. 17 T5N R64W 6th P.M.		
Site Position:		Northing:	1,388,702.00 usft
From:	Lat/Long	Easting:	3,256,129.74 usft
Position Uncertainty:	0.0 usft	Slot Radius:	1.10000ft
		Latitude:	40.396743
		Longitude:	-104.580386
		Grid Convergence:	0.59 °

Well	CECIL'S KERSEY FARM 17K-232		
Well Position	+N/-S	-44.8 usft	Northing:
	+E/-W	-4.2 usft	Easting:
Position Uncertainty	0.0 usft		Wellhead Elevation:
			Latitude:
			Longitude:
			Ground Level:

Wellbore	ORIGINAL WELLBORE				
Magnetics	Model Name	Sample Date	Declination (°)	Dip Angle (°)	Field Strength (nT)
	IGRF2015	06/09/2015	8.30	66.93	52,615

Design	PROPOSAL #2			
Audit Notes:				
Version:	Phase:	PROTOTYPE	Tie On Depth:	0.0
Vertical Section:	Depth From (TVD) (usft)	+N/-S (usft)	+E/-W (usft)	Direction (°)
	6,677.0	0.0	0.0	80.60

Plan Sections											
MD (usft)	Inc (°)	Azi (°)	Vertical Depth	SS (usft)	+N/-S (usft)	+E/-W (usft)	Dogleg Rate (°/100usf)	Build Rate (°/100usf)	Turn Rate (°/100usf)	TFO (°)	Target
0.0	0.00	0.00	0.0	-4,636.0	0.0	0.0	0.00	0.00	0.00	0.00	
1,350.0	0.00	0.00	1,350.0	-3,286.0	0.0	0.0	0.00	0.00	0.00	0.00	
2,113.3	15.27	308.63	2,104.3	-2,531.7	63.1	-79.0	2.00	2.00	0.00	308.63	
5,323.8	15.27	308.63	5,201.5	565.5	590.8	-739.3	0.00	0.00	0.00	0.00	
6,087.1	0.00	0.00	5,955.8	1,319.8	653.9	-818.3	2.00	-2.00	0.00	180.00	
6,117.1	0.00	0.00	5,985.8	1,349.8	653.9	-818.3	0.00	0.00	0.00	0.00	KOP - CECIL'S KEI
7,246.5	90.35	90.00	6,702.0	2,066.0	653.9	-97.7	8.00	8.00	7.97	90.00	7" ICP *NEW* - CEI
11,293.2	90.36	90.00	6,677.0	2,041.0	653.9	3,949.0	0.00	0.00	0.00	0.47	BHL - CECIL'S KEF

Planning Report



Database:	EDM 5000.1 Single User Db	Local Co-ordinate Reference:	Well CECIL'S KERSEY FARM 17K-232
Company:	PDC ENERGY	TVD Reference:	KB-EST @ 4636.0usft (Original Well Elev)
Project:	WELD COUNTY, COLORADO	MD Reference:	KB-EST @ 4636.0usft (Original Well Elev)
Site:	NW SW SEC. 17 T5N R64W 6th P.M.	North Reference:	True
Well:	CECIL'S KERSEY FARM 17K-232	Survey Calculation Method:	Minimum Curvature
Wellbore:	ORIGINAL WELLBORE		
Design:	PROPOSAL #2		

Planned Survey										
MD (usft)	Inc (°)	Azi (°)	TVD (usft)	SS (usft)	+N/-S (usft)	+E/-W (usft)	Vertical Section (usft)	Dogleg Rate (°/100usft)	Build Rate (°/100usft)	Turn Rate (°/100usft)
0.0	0.00	0.00	0.0	4,636.00	0.0	0.0	0.0	0.00	0.00	0.00
100.0	0.00	0.00	100.0	4,536.00	0.0	0.0	0.0	0.00	0.00	0.00
200.0	0.00	0.00	200.0	4,436.00	0.0	0.0	0.0	0.00	0.00	0.00
300.0	0.00	0.00	300.0	4,336.00	0.0	0.0	0.0	0.00	0.00	0.00
400.0	0.00	0.00	400.0	4,236.00	0.0	0.0	0.0	0.00	0.00	0.00
500.0	0.00	0.00	500.0	4,136.00	0.0	0.0	0.0	0.00	0.00	0.00
600.0	0.00	0.00	600.0	4,036.00	0.0	0.0	0.0	0.00	0.00	0.00
700.0	0.00	0.00	700.0	3,936.00	0.0	0.0	0.0	0.00	0.00	0.00
800.0	0.00	0.00	800.0	3,836.00	0.0	0.0	0.0	0.00	0.00	0.00
900.0	0.00	0.00	900.0	3,736.00	0.0	0.0	0.0	0.00	0.00	0.00
1,000.0	0.00	0.00	1,000.0	3,636.00	0.0	0.0	0.0	0.00	0.00	0.00
1,100.0	0.00	0.00	1,100.0	3,536.00	0.0	0.0	0.0	0.00	0.00	0.00
1,200.0	0.00	0.00	1,200.0	3,436.00	0.0	0.0	0.0	0.00	0.00	0.00
1,300.0	0.00	0.00	1,300.0	3,336.00	0.0	0.0	0.0	0.00	0.00	0.00
START NUDGE (2°/100ft BUR)										
1,350.0	0.00	0.00	1,350.0	3,286.00	0.0	0.0	0.0	0.00	0.00	0.00
1,400.0	1.00	308.63	1,400.0	3,236.00	0.3	-0.3	-0.3	2.00	2.00	0.00
1,500.0	3.00	308.63	1,499.9	3,136.07	2.5	-3.1	-2.6	2.00	2.00	0.00
1,600.0	5.00	308.63	1,599.7	3,036.32	6.8	-8.5	-7.3	2.00	2.00	0.00
1,700.0	7.00	308.63	1,699.1	2,936.87	13.3	-16.7	-14.3	2.00	2.00	0.00
1,800.0	9.00	308.63	1,798.2	2,837.85	22.0	-27.6	-23.6	2.00	2.00	0.00
1,900.0	11.00	308.63	1,896.6	2,739.37	32.9	-41.1	-35.2	2.00	2.00	0.00
2,000.0	13.00	308.63	1,994.4	2,641.56	45.8	-57.4	-49.1	2.00	2.00	0.00
2,100.0	15.00	308.63	2,091.5	2,544.54	60.9	-76.3	-65.3	2.00	2.00	0.00
EOB TO 15.27° INC										
2,113.3	15.27	308.63	2,104.3	2,531.70	63.1	-79.0	-67.6	2.00	2.00	0.00
2,200.0	15.27	308.63	2,187.9	2,448.06	77.4	-96.8	-82.9	0.00	0.00	0.00
2,300.0	15.27	308.63	2,284.4	2,351.59	93.8	-117.4	-100.5	0.00	0.00	0.00
2,400.0	15.27	308.63	2,380.9	2,255.12	110.2	-137.9	-118.1	0.00	0.00	0.00
2,500.0	15.27	308.63	2,477.4	2,158.64	126.7	-158.5	-135.7	0.00	0.00	0.00
2,600.0	15.27	308.63	2,573.8	2,062.17	143.1	-179.1	-153.3	0.00	0.00	0.00
2,700.0	15.27	308.63	2,670.3	1,965.70	159.5	-199.6	-170.9	0.00	0.00	0.00
2,800.0	15.27	308.63	2,766.8	1,869.23	176.0	-220.2	-188.5	0.00	0.00	0.00
2,900.0	15.27	308.63	2,863.2	1,772.76	192.4	-240.8	-206.1	0.00	0.00	0.00
3,000.0	15.27	308.63	2,959.7	1,676.29	208.8	-261.4	-223.7	0.00	0.00	0.00
3,100.0	15.27	308.63	3,056.2	1,579.81	225.3	-281.9	-241.3	0.00	0.00	0.00
3,200.0	15.27	308.63	3,152.7	1,483.34	241.7	-302.5	-258.9	0.00	0.00	0.00
3,300.0	15.27	308.63	3,249.1	1,386.87	258.2	-323.1	-276.5	0.00	0.00	0.00
3,400.0	15.27	308.63	3,345.6	1,290.40	274.6	-343.6	-294.2	0.00	0.00	0.00
3,500.0	15.27	308.63	3,442.1	1,193.93	291.0	-364.2	-311.8	0.00	0.00	0.00
PARKMAN SANDSTONE										
3,549.7	15.27	308.63	3,490.0	1,146.00	299.2	-374.4	-320.5	0.00	0.00	0.00
3,600.0	15.27	308.63	3,538.5	1,097.46	307.5	-384.8	-329.4	0.00	0.00	0.00
3,700.0	15.27	308.63	3,635.0	1,000.98	323.9	-405.3	-347.0	0.00	0.00	0.00
3,800.0	15.27	308.63	3,731.5	904.51	340.3	-425.9	-364.6	0.00	0.00	0.00
3,900.0	15.27	308.63	3,828.0	808.04	356.8	-446.5	-382.2	0.00	0.00	0.00
4,000.0	15.27	308.63	3,924.4	711.57	373.2	-467.0	-399.8	0.00	0.00	0.00
4,100.0	15.27	308.63	4,020.9	615.10	389.6	-487.6	-417.4	0.00	0.00	0.00
4,200.0	15.27	308.63	4,117.4	518.63	406.1	-508.2	-435.0	0.00	0.00	0.00
SUSSEX SANDSTONE										
4,285.6	15.27	308.63	4,200.0	436.00	420.2	-525.8	-450.1	0.00	0.00	0.00
4,300.0	15.27	308.63	4,213.8	422.16	422.5	-528.7	-452.6	0.00	0.00	0.00
4,400.0	15.27	308.63	4,310.3	325.68	439.0	-549.3	-470.2	0.00	0.00	0.00
4,500.0	15.27	308.63	4,406.8	229.21	455.4	-569.9	-487.8	0.00	0.00	0.00

Planning Report



Database:	EDM 5000.1 Single User Db	Local Co-ordinate Reference:	Well CECIL'S KERSEY FARM 17K-232
Company:	PDC ENERGY	TVD Reference:	KB-EST @ 4636.0usft (Original Well Elev)
Project:	WELD COUNTY, COLORADO	MD Reference:	KB-EST @ 4636.0usft (Original Well Elev)
Site:	NW SW SEC. 17 T5N R64W 6th P.M.	North Reference:	True
Well:	CECIL'S KERSEY FARM 17K-232	Survey Calculation Method:	Minimum Curvature
Wellbore:	ORIGINAL WELLBORE		
Design:	PROPOSAL #2		

Planned Survey

MD (usft)	Inc (°)	Azi (°)	TVD (usft)	SS (usft)	+N/-S (usft)	+E/-W (usft)	Vertical Section (usft)	Dogleg Rate (°/100usft)	Build Rate (°/100usft)	Turn Rate (°/100usft)
4,600.0	15.27	308.63	4,503.3	132.74	471.8	-590.5	-505.4	0.00	0.00	0.00
4,700.0	15.27	308.63	4,599.7	36.27	488.3	-611.0	-523.1	0.00	0.00	0.00
4,800.0	15.27	308.63	4,696.2	-60.20	504.7	-631.6	-540.7	0.00	0.00	0.00
4,900.0	15.27	308.63	4,792.7	-156.67	521.1	-652.2	-558.3	0.00	0.00	0.00
5,000.0	15.27	308.63	4,889.1	-253.15	537.6	-672.7	-575.9	0.00	0.00	0.00
5,100.0	15.27	308.63	4,985.6	-349.62	554.0	-693.3	-593.5	0.00	0.00	0.00
5,200.0	15.27	308.63	5,082.1	-446.09	570.5	-713.9	-611.1	0.00	0.00	0.00
5,300.0	15.27	308.63	5,178.6	-542.56	586.9	-734.4	-628.7	0.00	0.00	0.00
END OF TANGENT										
5,323.8	15.27	308.63	5,201.5	-565.52	590.8	-739.3	-632.9	0.00	0.00	0.00
5,400.0	13.74	308.63	5,275.3	-639.29	602.7	-754.2	-645.6	2.00	-2.00	0.00
5,500.0	11.74	308.63	5,372.8	-736.82	616.5	-771.5	-660.4	2.00	-2.00	0.00
5,600.0	9.74	308.63	5,471.1	-835.07	628.1	-786.0	-672.9	2.00	-2.00	0.00
5,700.0	7.74	308.63	5,569.9	-933.90	637.6	-797.9	-683.0	2.00	-2.00	0.00
5,800.0	5.74	308.63	5,669.2	-1,033.20	644.9	-807.1	-690.9	2.00	-2.00	0.00
5,900.0	3.74	308.63	5,768.9	-1,132.86	650.1	-813.5	-696.4	2.00	-2.00	0.00
6,000.0	1.74	308.63	5,868.7	-1,232.74	653.1	-817.3	-699.6	2.00	-2.00	0.00
EOD TO VERTICAL										
6,087.1	0.00	0.00	5,955.8	-1,319.82	653.9	-818.3	-700.5	2.00	-2.00	0.00
6,100.0	0.00	0.00	5,968.7	-1,332.72	653.9	-818.3	-700.5	0.00	0.00	0.00
KOP (8°/100ft BUR)										
6,117.1	0.00	0.00	5,985.8	-1,349.82	653.9	-818.3	-700.5	0.00	0.00	0.00
6,200.0	6.63	90.00	6,068.5	-1,432.54	653.9	-813.5	-695.8	8.00	8.00	0.00
6,300.0	14.63	90.00	6,166.7	-1,530.74	653.9	-795.1	-677.6	8.00	8.00	0.00
6,400.0	22.63	90.00	6,261.4	-1,625.42	653.9	-763.1	-646.1	8.00	8.00	0.00
6,500.0	30.63	90.00	6,350.7	-1,714.74	653.9	-718.4	-601.9	8.00	8.00	0.00
6,600.0	38.63	90.00	6,433.0	-1,796.95	653.9	-661.6	-545.9	8.00	8.00	0.00
SHARON SPRINGS										
6,669.4	44.19	90.00	6,485.0	-1,849.00	653.9	-615.7	-500.6	8.00	8.00	0.00
6,700.0	46.63	90.00	6,506.5	-1,870.46	653.9	-593.9	-479.1	8.00	8.00	0.00
NIOBRARA A										
6,791.7	53.97	90.00	6,565.0	-1,929.00	653.9	-523.4	-409.5	8.00	8.00	0.00
6,800.0	54.63	90.00	6,569.8	-1,933.84	653.9	-516.6	-402.9	8.00	8.00	0.00
6,900.0	62.63	90.00	6,621.9	-1,985.85	653.9	-431.3	-318.7	8.00	8.00	0.00
NIOBRARA B										
6,995.6	70.28	90.00	6,660.0	-2,024.00	653.9	-343.8	-232.3	8.00	8.00	0.00
7,000.0	70.63	90.00	6,661.5	-2,025.48	653.9	-339.6	-228.2	8.00	8.00	0.00
7,100.0	78.63	90.00	6,688.0	-2,051.96	653.9	-243.3	-133.2	8.00	8.00	0.00
7,200.0	86.63	90.00	6,700.8	-2,064.78	653.9	-144.2	-35.4	8.00	8.00	0.00
7" ICP *NEW* - CECIL'S KERSEY FARM 17K-232 (P2)										
7,246.5	90.35	90.00	6,702.0	-2,066.00	653.9	-97.7	10.4	8.00	8.00	0.00
7,300.0	90.35	90.00	6,701.7	-2,065.67	653.9	-44.2	63.2	0.00	0.00	0.00
7,400.0	90.35	90.00	6,701.1	-2,065.06	653.9	55.8	161.9	0.00	0.00	0.00
7,500.0	90.35	90.00	6,700.4	-2,064.45	653.9	155.8	260.5	0.00	0.00	0.00
7,600.0	90.35	90.00	6,699.8	-2,063.83	653.9	255.8	359.2	0.00	0.00	0.00
7,700.0	90.35	90.00	6,699.2	-2,063.22	653.9	355.8	457.8	0.00	0.00	0.00
7,800.0	90.35	90.00	6,698.6	-2,062.61	653.9	455.8	556.5	0.00	0.00	0.00
7,900.0	90.35	90.00	6,698.0	-2,061.99	653.9	555.8	655.2	0.00	0.00	0.00
8,000.0	90.35	90.00	6,697.4	-2,061.38	653.9	655.8	753.8	0.00	0.00	0.00
8,100.0	90.35	90.00	6,696.8	-2,060.76	653.9	755.8	852.5	0.00	0.00	0.00
8,200.0	90.35	90.00	6,696.1	-2,060.15	653.9	855.8	951.1	0.00	0.00	0.00
8,300.0	90.35	90.00	6,695.5	-2,059.53	653.9	955.8	1,049.8	0.00	0.00	0.00
8,400.0	90.35	90.00	6,694.9	-2,058.92	653.9	1,055.8	1,148.4	0.00	0.00	0.00

Planning Report



Database:	EDM 5000.1 Single User Db	Local Co-ordinate Reference:	Well CECIL'S KERSEY FARM 17K-232
Company:	PDC ENERGY	TVD Reference:	KB-EST @ 4636.0usft (Original Well Elev)
Project:	WELD COUNTY, COLORADO	MD Reference:	KB-EST @ 4636.0usft (Original Well Elev)
Site:	NW SW SEC. 17 T5N R64W 6th P.M.	North Reference:	True
Well:	CECIL'S KERSEY FARM 17K-232	Survey Calculation Method:	Minimum Curvature
Wellbore:	ORIGINAL WELLBORE		
Design:	PROPOSAL #2		

Planned Survey

MD (usft)	Inc (°)	Azi (°)	TVD (usft)	SS (usft)	+N/-S (usft)	+E/-W (usft)	Vertical Section (usft)	Dogleg Rate (°/100usft)	Build Rate (°/100usft)	Turn Rate (°/100usft)
8,500.0	90.35	90.00	6,694.3	-2,058.30	653.9	1,155.8	1,247.1	0.00	0.00	0.00
8,600.0	90.35	90.00	6,693.7	-2,057.69	653.9	1,255.8	1,345.7	0.00	0.00	0.00
8,700.0	90.35	90.00	6,693.1	-2,057.07	653.9	1,355.8	1,444.4	0.00	0.00	0.00
8,800.0	90.35	90.00	6,692.5	-2,056.45	653.9	1,455.8	1,543.0	0.00	0.00	0.00
8,900.0	90.35	90.00	6,691.8	-2,055.84	653.9	1,555.8	1,641.7	0.00	0.00	0.00
9,000.0	90.35	90.00	6,691.2	-2,055.22	653.9	1,655.8	1,740.4	0.00	0.00	0.00
9,100.0	90.35	90.00	6,690.6	-2,054.60	653.9	1,755.8	1,839.0	0.00	0.00	0.00
9,200.0	90.35	90.00	6,690.0	-2,053.99	653.9	1,855.8	1,937.7	0.00	0.00	0.00
9,300.0	90.35	90.00	6,689.4	-2,053.37	653.9	1,955.8	2,036.3	0.00	0.00	0.00
9,400.0	90.35	90.00	6,688.7	-2,052.75	653.9	2,055.8	2,135.0	0.00	0.00	0.00
9,500.0	90.35	90.00	6,688.1	-2,052.13	653.9	2,155.8	2,233.6	0.00	0.00	0.00
9,600.0	90.35	90.00	6,687.5	-2,051.51	653.9	2,255.8	2,332.3	0.00	0.00	0.00
9,700.0	90.35	90.00	6,686.9	-2,050.89	653.9	2,355.8	2,430.9	0.00	0.00	0.00
9,800.0	90.35	90.00	6,686.3	-2,050.27	653.9	2,455.8	2,529.6	0.00	0.00	0.00
9,900.0	90.35	90.00	6,685.7	-2,049.66	653.9	2,555.8	2,628.2	0.00	0.00	0.00
10,000.0	90.36	90.00	6,685.0	-2,049.04	653.9	2,655.8	2,726.9	0.00	0.00	0.00
10,100.0	90.36	90.00	6,684.4	-2,048.42	653.9	2,755.8	2,825.6	0.00	0.00	0.00
10,200.0	90.36	90.00	6,683.8	-2,047.80	653.9	2,855.8	2,924.2	0.00	0.00	0.00
10,300.0	90.36	90.00	6,683.2	-2,047.18	653.9	2,955.8	3,022.9	0.00	0.00	0.00
10,400.0	90.36	90.00	6,682.6	-2,046.56	653.9	3,055.8	3,121.5	0.00	0.00	0.00
10,500.0	90.36	90.00	6,681.9	-2,045.93	653.9	3,155.7	3,220.2	0.00	0.00	0.00
10,600.0	90.36	90.00	6,681.3	-2,045.31	653.9	3,255.7	3,318.8	0.00	0.00	0.00
10,700.0	90.36	90.00	6,680.7	-2,044.69	653.9	3,355.7	3,417.5	0.00	0.00	0.00
10,800.0	90.36	90.00	6,680.1	-2,044.07	653.9	3,455.7	3,516.1	0.00	0.00	0.00
10,900.0	90.36	90.00	6,679.4	-2,043.45	653.9	3,555.7	3,614.8	0.00	0.00	0.00
11,000.0	90.36	90.00	6,678.8	-2,042.83	653.9	3,655.7	3,713.5	0.00	0.00	0.00
11,100.0	90.36	90.00	6,678.2	-2,042.20	653.9	3,755.7	3,812.1	0.00	0.00	0.00
11,200.0	90.36	90.00	6,677.6	-2,041.58	653.9	3,855.7	3,910.8	0.00	0.00	0.00
BHL - CECIL'S KERSEY FARM 17K-232 (P2)										
11,293.2	90.36	90.00	6,677.0	-2,041.00	653.9	3,948.9	4,002.7	0.00	0.00	0.00

Formations

MD (usft)	TVD (usft)	Name	Lithology	Dip (°)	Dip Direction (°)
3,549.7	3,490.0	PARKMAN SANDSTONE			
4,285.6	4,200.0	SUSSEX SANDSTONE			
6,669.4	6,485.0	SHARON SPRINGS			
6,791.7	6,565.0	NIOBRARA A			
6,995.6	6,660.0	NIOBRARA B			

Planning Report



Database:	EDM 5000.1 Single User Db	Local Co-ordinate Reference:	Well CECIL'S KERSEY FARM 17K-232
Company:	PDC ENERGY	TVD Reference:	KB-EST @ 4636.0usft (Original Well Elev)
Project:	WELD COUNTY, COLORADO	MD Reference:	KB-EST @ 4636.0usft (Original Well Elev)
Site:	NW SW SEC. 17 T5N R64W 6th P.M.	North Reference:	True
Well:	CECIL'S KERSEY FARM 17K-232	Survey Calculation Method:	Minimum Curvature
Wellbore:	ORIGINAL WELLBORE		
Design:	PROPOSAL #2		

Plan Annotations

MD (usft)	TVD (usft)	Local Coordinates		Comment
		+N/-S (usft)	+E/-W (usft)	
1,350.0	1,350.0	0.0	0.0	START NUDGE (2°/100ft BUR)
2,113.3	2,104.3	63.1	-79.0	EOB TO 15.27° INC
5,323.8	5,201.5	590.8	-739.3	END OF TANGENT
6,087.1	5,955.8	653.9	-818.3	EOD TO VERTICAL
6,117.1	5,985.8	653.9	-818.3	KOP (8°/100ft BUR)
7,246.5	6,702.0	653.9	-97.7	7" ICP *NEW* - CECIL'S KERSEY FARM 17K-232 (P2)
11,293.2	6,677.0	653.9	3,948.9	BHL - CECIL'S KERSEY FARM 17K-232 (P2)