

# **PDC ENERGY**

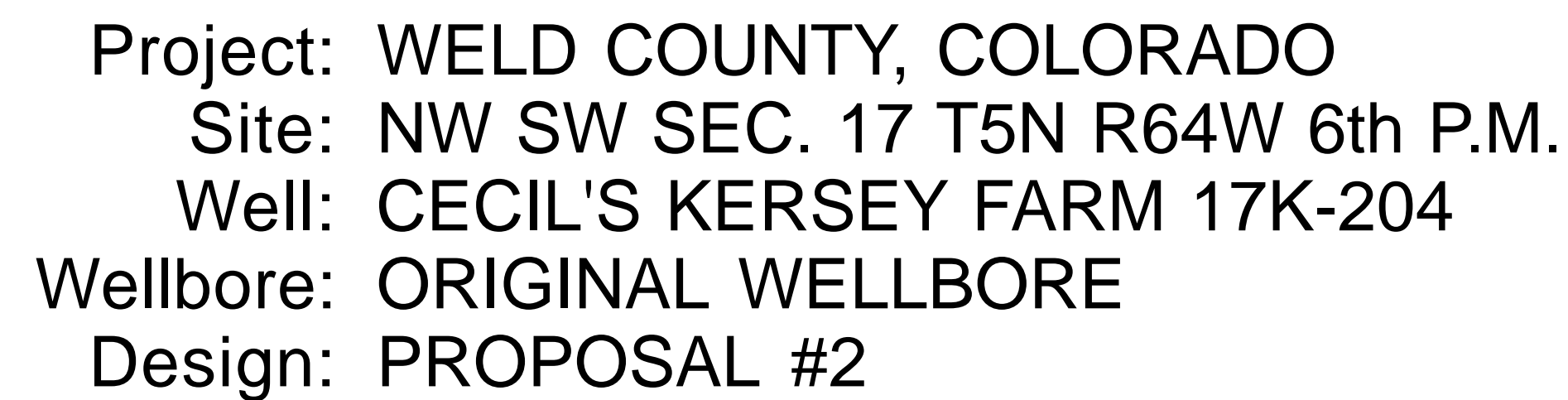
**WELD COUNTY, COLORADO  
NW SW SEC. 17 T5N R64W 6th P.M.  
CECIL'S KERSEY FARM 17K-204**

## **ORIGINAL WELLBORE**

**15 September, 2015**

**Plan: PROPOSAL #2**





**PROPOSED LOCAL COORDINATES:**

SHL: 1725ft FSL & 842ft FWL of Sec 17

7" ICP \*NEW\*: 2468.4ft FSL & 714.5ft FWL of Sec 17

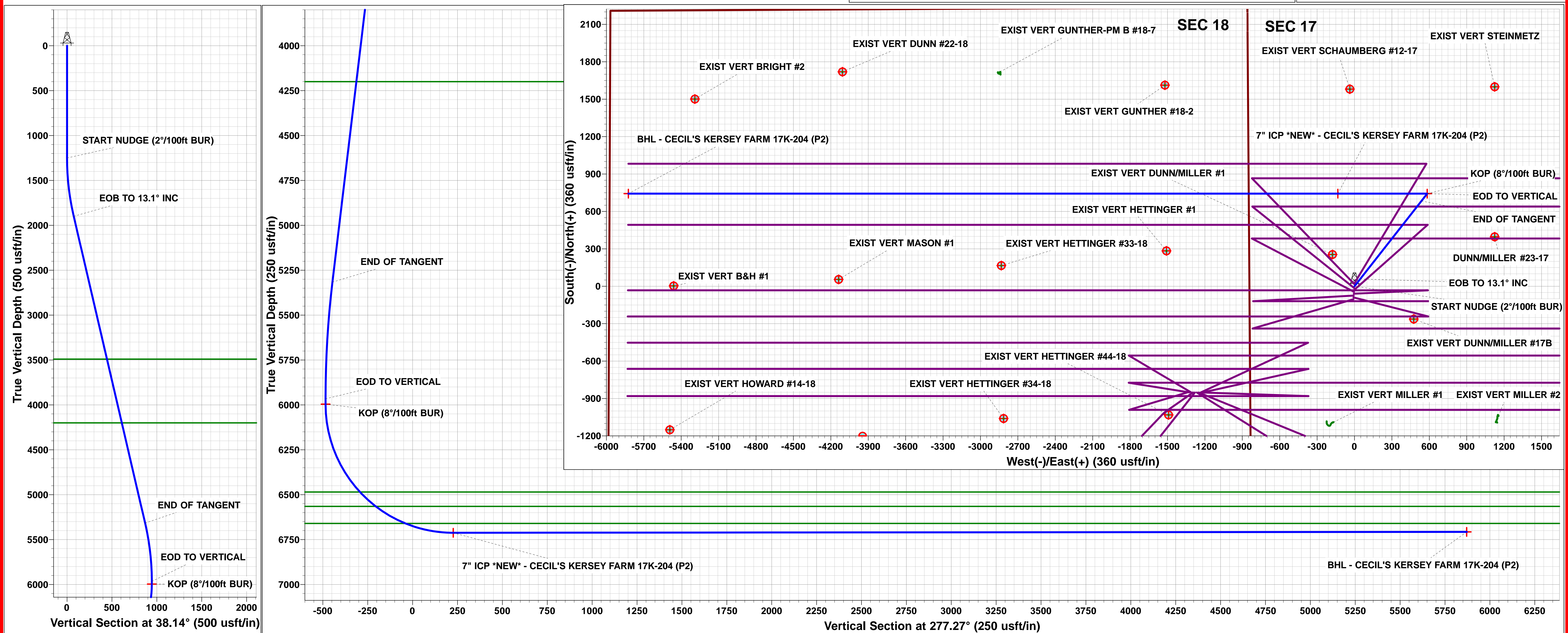
BHL: 2495ft FSL & 150ft FWL of Sec 18

**Geological Map Data:**

- EXIST VERT DUNN/MILLER #23-17
- EXIST VERT DUNN/MILLER #1
- EXIST VERT DUNN/MILLER #17B
- CECIL'S KERSEY FARM 17K-404
- CECIL'S KERSEY FARM 17K-402
- CECIL'S KERSEY FARM 17K-204
- CECIL'S KERSEY FARM 17K-232
- CECIL'S KERSEY FARM 17K-334
- CECIL'S KERSEY FARM 17K-332
- CECIL'S KERSEY FARM 17B-214
- CECIL'S KERSEY FARM 17B-212
- CECIL'S KERSEY FARM 17B-304
- CECIL'S KERSEY FARM 17B-302

**Magnetic Field Data:**

- Magnetic North: 8.30°
- Magnetic Field Strength: 52614.6snT
- Dip Angle: 66.93°
- Date: 06/09/2015
- Model: IGRF2015



# Planning Report



<b>Database:</b>	EDM 5000.1 Single User Db	<b>Local Co-ordinate Reference:</b>	Well CECIL'S KERSEY FARM 17K-204
<b>Company:</b>	PDC ENERGY	<b>TVD Reference:</b>	KB-EST @ 4636.0usft (Original Well Elev)
<b>Project:</b>	WELD COUNTY, COLORADO	<b>MD Reference:</b>	KB-EST @ 4636.0usft (Original Well Elev)
<b>Site:</b>	NW SW SEC. 17 T5N R64W 6th P.M.	<b>North Reference:</b>	True
<b>Well:</b>	CECIL'S KERSEY FARM 17K-204	<b>Survey Calculation Method:</b>	Minimum Curvature
<b>Wellbore:</b>	ORIGINAL WELLBORE		
<b>Design:</b>	PROPOSAL #2		

<b>Project</b>	WELD COUNTY, COLORADO		
<b>Map System:</b>	US State Plane 1983	<b>System Datum:</b>	Mean Sea Level
<b>Geo Datum:</b>	North American Datum 1983		
<b>Map Zone:</b>	Colorado Northern Zone		Using geodetic scale factor

<b>Site</b>	NW SW SEC. 17 T5N R64W 6th P.M.		
<b>Site Position:</b>		<b>Northing:</b>	1,388,702.00 usft
<b>From:</b>	Lat/Long	<b>Easting:</b>	3,256,129.74 usft
<b>Position Uncertainty:</b>	0.0 usft	<b>Slot Radius:</b>	1.10000ft
		<b>Latitude:</b>	40.396743
		<b>Longitude:</b>	-104.580386
		<b>Grid Convergence:</b>	0.59 °

<b>Well</b>	CECIL'S KERSEY FARM 17K-204		
<b>Well Position</b>	<b>+N/-S</b>	-29.9 usft	<b>Northing:</b>
	<b>+E/-W</b>	-2.8 usft	<b>Easting:</b>
<b>Position Uncertainty</b>		0.0 usft	<b>Wellhead Elevation:</b>
			<b>Latitude:</b>
			<b>Longitude:</b>
			<b>Ground Level:</b>

<b>Wellbore</b>	ORIGINAL WELLBORE				
<b>Magnetics</b>	<b>Model Name</b>	<b>Sample Date</b>	<b>Declination (°)</b>	<b>Dip Angle (°)</b>	<b>Field Strength (nT)</b>
	IGRF2015	06/09/2015	8.30	66.93	52,615

<b>Design</b>	PROPOSAL #2			
<b>Audit Notes:</b>				
<b>Version:</b>	<b>Phase:</b>	PROTOTYPE	<b>Tie On Depth:</b>	0.0
<b>Vertical Section:</b>	<b>Depth From (TVD) (usft)</b>	<b>+N/-S (usft)</b>	<b>+E/-W (usft)</b>	<b>Direction (°)</b>
	6,707.0	0.0	0.0	277.27

<b>Plan Sections</b>											
MD (usft)	Inc (°)	Azi (°)	Vertical Depth	SS (usft)	+N/-S (usft)	+E/-W (usft)	Dogleg Rate (°/100usf)	Build Rate (°/100usf)	Turn Rate (°/100usf)	TFO (°)	Target
0.0	0.00	0.00	0.0	-4,636.0	0.0	0.0	0.00	0.00	0.00	0.00	
1,250.0	0.00	0.00	1,250.0	-3,386.0	0.0	0.0	0.00	0.00	0.00	0.00	
1,905.1	13.10	38.14	1,899.4	-2,736.6	58.7	46.1	2.00	2.00	0.00	38.14	
5,413.4	13.10	38.14	5,316.4	680.4	684.1	537.2	0.00	0.00	0.00	0.00	
6,068.5	0.00	0.00	5,965.8	1,329.8	742.8	583.3	2.00	-2.00	0.00	180.00	
6,098.5	0.00	0.00	5,995.8	1,359.8	742.8	583.3	0.00	0.00	0.00	0.00	KOP - CECIL'S KEI
7,224.1	90.05	270.00	6,712.0	2,076.0	742.8	-133.5	8.00	8.00	-8.00	270.00	7" ICP *NEW* - CEI
12,914.3	90.05	270.00	6,707.0	2,071.0	742.8	-5,823.7	0.00	0.00	0.00	-0.79	BHL - CECIL'S KEF

# Planning Report



<b>Database:</b>	EDM 5000.1 Single User Db	<b>Local Co-ordinate Reference:</b>	Well CECIL'S KERSEY FARM 17K-204
<b>Company:</b>	PDC ENERGY	<b>TVD Reference:</b>	KB-EST @ 4636.0usft (Original Well Elev)
<b>Project:</b>	WELD COUNTY, COLORADO	<b>MD Reference:</b>	KB-EST @ 4636.0usft (Original Well Elev)
<b>Site:</b>	NW SW SEC. 17 T5N R64W 6th P.M.	<b>North Reference:</b>	True
<b>Well:</b>	CECIL'S KERSEY FARM 17K-204	<b>Survey Calculation Method:</b>	Minimum Curvature
<b>Wellbore:</b>	ORIGINAL WELLBORE		
<b>Design:</b>	PROPOSAL #2		

## Planned Survey

MD (usft)	Inc (°)	Azi (°)	TVD (usft)	SS (usft)	+N/-S (usft)	+E/-W (usft)	Vertical Section (usft)	Dogleg Rate (°/100usft)	Build Rate (°/100usft)	Turn Rate (°/100usft)
0.0	0.00	0.00	0.0	4,636.00	0.0	0.0	0.0	0.00	0.00	0.00
100.0	0.00	0.00	100.0	4,536.00	0.0	0.0	0.0	0.00	0.00	0.00
200.0	0.00	0.00	200.0	4,436.00	0.0	0.0	0.0	0.00	0.00	0.00
300.0	0.00	0.00	300.0	4,336.00	0.0	0.0	0.0	0.00	0.00	0.00
400.0	0.00	0.00	400.0	4,236.00	0.0	0.0	0.0	0.00	0.00	0.00
500.0	0.00	0.00	500.0	4,136.00	0.0	0.0	0.0	0.00	0.00	0.00
600.0	0.00	0.00	600.0	4,036.00	0.0	0.0	0.0	0.00	0.00	0.00
700.0	0.00	0.00	700.0	3,936.00	0.0	0.0	0.0	0.00	0.00	0.00
800.0	0.00	0.00	800.0	3,836.00	0.0	0.0	0.0	0.00	0.00	0.00
900.0	0.00	0.00	900.0	3,736.00	0.0	0.0	0.0	0.00	0.00	0.00
1,000.0	0.00	0.00	1,000.0	3,636.00	0.0	0.0	0.0	0.00	0.00	0.00
1,100.0	0.00	0.00	1,100.0	3,536.00	0.0	0.0	0.0	0.00	0.00	0.00
1,200.0	0.00	0.00	1,200.0	3,436.00	0.0	0.0	0.0	0.00	0.00	0.00
<b>START NUDGE (2°/100ft BUR)</b>										
1,250.0	0.00	0.00	1,250.0	3,386.00	0.0	0.0	0.0	0.00	0.00	0.00
1,300.0	1.00	38.14	1,300.0	3,336.00	0.3	0.3	-0.2	2.00	2.00	0.00
1,400.0	3.00	38.14	1,399.9	3,236.07	3.1	2.4	-2.0	2.00	2.00	0.00
1,500.0	5.00	38.14	1,499.7	3,136.32	8.6	6.7	-5.6	2.00	2.00	0.00
1,600.0	7.00	38.14	1,599.1	3,036.87	16.8	13.2	-11.0	2.00	2.00	0.00
1,700.0	9.00	38.14	1,698.2	2,937.85	27.7	21.8	-18.1	2.00	2.00	0.00
1,800.0	11.00	38.14	1,796.6	2,839.37	41.4	32.5	-27.0	2.00	2.00	0.00
1,900.0	13.00	38.14	1,894.4	2,741.56	57.7	45.3	-37.7	2.00	2.00	0.00
<b>EOB TO 13.1° INC</b>										
1,905.1	13.10	38.14	1,899.4	2,736.59	58.7	46.1	-38.3	2.00	2.00	0.00
2,000.0	13.10	38.14	1,991.8	2,644.16	75.6	59.3	-49.3	0.00	0.00	0.00
2,100.0	13.10	38.14	2,089.2	2,546.77	93.4	73.3	-60.9	0.00	0.00	0.00
2,200.0	13.10	38.14	2,186.6	2,449.37	111.2	87.3	-72.6	0.00	0.00	0.00
2,300.0	13.10	38.14	2,284.0	2,351.97	129.1	101.3	-84.2	0.00	0.00	0.00
2,400.0	13.10	38.14	2,381.4	2,254.58	146.9	115.3	-95.8	0.00	0.00	0.00
2,500.0	13.10	38.14	2,478.8	2,157.18	164.7	129.3	-107.5	0.00	0.00	0.00
2,600.0	13.10	38.14	2,576.2	2,059.78	182.5	143.3	-119.1	0.00	0.00	0.00
2,700.0	13.10	38.14	2,673.6	1,962.39	200.4	157.3	-130.7	0.00	0.00	0.00
2,800.0	13.10	38.14	2,771.0	1,864.99	218.2	171.3	-142.4	0.00	0.00	0.00
2,900.0	13.10	38.14	2,868.4	1,767.59	236.0	185.3	-154.0	0.00	0.00	0.00
3,000.0	13.10	38.14	2,965.8	1,670.20	253.9	199.4	-165.6	0.00	0.00	0.00
3,100.0	13.10	38.14	3,063.2	1,572.80	271.7	213.4	-177.3	0.00	0.00	0.00
3,200.0	13.10	38.14	3,160.6	1,475.40	289.5	227.4	-188.9	0.00	0.00	0.00
3,300.0	13.10	38.14	3,258.0	1,378.01	307.3	241.4	-200.5	0.00	0.00	0.00
3,400.0	13.10	38.14	3,355.4	1,280.61	325.2	255.4	-212.2	0.00	0.00	0.00
3,500.0	13.10	38.14	3,452.8	1,183.21	343.0	269.4	-223.8	0.00	0.00	0.00
<b>PARKMAN SANDSTONE</b>										
3,538.2	13.10	38.14	3,490.0	1,146.00	349.8	274.7	-228.2	0.00	0.00	0.00
3,600.0	13.10	38.14	3,550.2	1,085.82	360.8	283.4	-235.4	0.00	0.00	0.00
3,700.0	13.10	38.14	3,647.6	988.42	378.7	297.4	-247.1	0.00	0.00	0.00
3,800.0	13.10	38.14	3,745.0	891.02	396.5	311.4	-258.7	0.00	0.00	0.00
3,900.0	13.10	38.14	3,842.4	793.63	414.3	325.4	-270.3	0.00	0.00	0.00
4,000.0	13.10	38.14	3,939.8	696.23	432.1	339.4	-282.0	0.00	0.00	0.00
4,100.0	13.10	38.14	4,037.2	598.83	450.0	353.4	-293.6	0.00	0.00	0.00
4,200.0	13.10	38.14	4,134.6	501.44	467.8	367.4	-305.2	0.00	0.00	0.00
<b>SUSSEX SANDSTONE</b>										
4,267.2	13.10	38.14	4,200.0	436.00	479.8	376.8	-313.0	0.00	0.00	0.00
4,300.0	13.10	38.14	4,232.0	404.04	485.6	381.4	-316.8	0.00	0.00	0.00
4,400.0	13.10	38.14	4,329.4	306.64	503.5	395.4	-328.5	0.00	0.00	0.00
4,500.0	13.10	38.14	4,426.8	209.25	521.3	409.4	-340.1	0.00	0.00	0.00

# Planning Report



<b>Database:</b>	EDM 5000.1 Single User Db	<b>Local Co-ordinate Reference:</b>	Well CECIL'S KERSEY FARM 17K-204
<b>Company:</b>	PDC ENERGY	<b>TVD Reference:</b>	KB-EST @ 4636.0usft (Original Well Elev)
<b>Project:</b>	WELD COUNTY, COLORADO	<b>MD Reference:</b>	KB-EST @ 4636.0usft (Original Well Elev)
<b>Site:</b>	NW SW SEC. 17 T5N R64W 6th P.M.	<b>North Reference:</b>	True
<b>Well:</b>	CECIL'S KERSEY FARM 17K-204	<b>Survey Calculation Method:</b>	Minimum Curvature
<b>Wellbore:</b>	ORIGINAL WELLBORE		
<b>Design:</b>	PROPOSAL #2		

Planned Survey										
MD (usft)	Inc (°)	Azi (°)	TVD (usft)	SS (usft)	+N/-S (usft)	+E/-W (usft)	Vertical Section (usft)	Dogleg Rate (°/100usft)	Build Rate (°/100usft)	Turn Rate (°/100usft)
4,600.0	13.10	38.14	4,524.1	111.85	539.1	423.4	-351.7	0.00	0.00	0.00
4,700.0	13.10	38.14	4,621.5	14.45	557.0	437.4	-363.4	0.00	0.00	0.00
4,800.0	13.10	38.14	4,718.9	-82.94	574.8	451.4	-375.0	0.00	0.00	0.00
4,900.0	13.10	38.14	4,816.3	-180.34	592.6	465.4	-386.6	0.00	0.00	0.00
5,000.0	13.10	38.14	4,913.7	-277.74	610.4	479.4	-398.3	0.00	0.00	0.00
5,100.0	13.10	38.14	5,011.1	-375.13	628.3	493.4	-409.9	0.00	0.00	0.00
5,200.0	13.10	38.14	5,108.5	-472.53	646.1	507.4	-421.5	0.00	0.00	0.00
5,300.0	13.10	38.14	5,205.9	-569.93	663.9	521.4	-433.2	0.00	0.00	0.00
5,400.0	13.10	38.14	5,303.3	-667.32	681.8	535.4	-444.8	0.00	0.00	0.00
<b>END OF TANGENT</b>										
<b>5,413.4</b>	<b>13.10</b>	<b>38.14</b>	<b>5,316.4</b>	<b>-680.37</b>	<b>684.1</b>	<b>537.2</b>	<b>-446.4</b>	<b>0.00</b>	<b>0.00</b>	<b>0.00</b>
5,500.0	11.37	38.14	5,401.0	-765.00	698.6	548.6	-455.8	2.00	-2.00	0.00
5,600.0	9.37	38.14	5,499.4	-863.36	712.7	559.7	-465.0	2.00	-2.00	0.00
5,700.0	7.37	38.14	5,598.3	-962.29	724.2	568.7	-472.5	2.00	-2.00	0.00
5,800.0	5.37	38.14	5,697.7	-1,061.67	732.9	575.5	-478.2	2.00	-2.00	0.00
5,900.0	3.37	38.14	5,797.4	-1,161.38	738.9	580.2	-482.1	2.00	-2.00	0.00
6,000.0	1.37	38.14	5,897.3	-1,261.29	742.2	582.8	-484.2	2.00	-2.00	0.00
<b>EOD TO VERTICAL</b>										
<b>6,068.5</b>	<b>0.00</b>	<b>38.14</b>	<b>5,965.8</b>	<b>-1,329.78</b>	<b>742.8</b>	<b>583.3</b>	<b>-484.6</b>	<b>2.00</b>	<b>-2.00</b>	<b>0.00</b>
<b>KOP (8°/100ft BUR)</b>										
<b>6,098.5</b>	<b>0.00</b>	<b>0.00</b>	<b>5,995.8</b>	<b>-1,359.78</b>	<b>742.8</b>	<b>583.3</b>	<b>-484.6</b>	<b>0.00</b>	<b>0.00</b>	<b>0.00</b>
6,100.0	0.12	270.00	5,997.3	-1,361.28	742.8	583.3	-484.6	7.89	7.89	0.00
6,200.0	8.12	270.00	6,096.9	-1,460.94	742.8	576.1	-477.5	8.00	8.00	0.00
6,300.0	16.12	270.00	6,194.6	-1,558.63	742.8	555.1	-456.7	8.00	8.00	0.00
6,400.0	24.12	270.00	6,288.5	-1,652.45	742.8	520.8	-422.6	8.00	8.00	0.00
6,500.0	32.12	270.00	6,376.6	-1,740.58	742.8	473.7	-375.9	8.00	8.00	0.00
6,600.0	40.12	270.00	6,457.3	-1,821.30	742.8	414.8	-317.5	8.00	8.00	0.00
<b>SHARON SPRINGS</b>										
<b>6,637.1</b>	<b>43.08</b>	<b>270.00</b>	<b>6,485.0</b>	<b>-1,849.00</b>	<b>742.8</b>	<b>390.2</b>	<b>-293.1</b>	<b>8.00</b>	<b>8.00</b>	<b>0.00</b>
6,700.0	48.12	270.00	6,529.0	-1,893.03	742.8	345.2	-248.5	8.00	8.00	0.00
<b>NIOBRARA A</b>										
<b>6,756.4</b>	<b>52.63</b>	<b>270.00</b>	<b>6,565.0</b>	<b>-1,929.00</b>	<b>742.8</b>	<b>301.8</b>	<b>-205.4</b>	<b>8.00</b>	<b>8.00</b>	<b>0.00</b>
6,800.0	56.12	270.00	6,590.4	-1,954.38	742.8	266.4	-170.2	8.00	8.00	0.00
6,900.0	64.12	270.00	6,640.2	-2,004.16	742.8	179.7	-84.3	8.00	8.00	0.00
<b>NIOBRARA B</b>										
<b>6,948.9</b>	<b>68.03</b>	<b>270.00</b>	<b>6,660.0</b>	<b>-2,024.00</b>	<b>742.8</b>	<b>135.0</b>	<b>-40.0</b>	<b>8.00</b>	<b>8.00</b>	<b>0.00</b>
7,000.0	72.12	270.00	6,677.4	-2,041.40	742.8	87.0	7.7	8.00	8.00	0.00
7,100.0	80.12	270.00	6,701.4	-2,065.37	742.8	-10.0	103.9	8.00	8.00	0.00
7,200.0	88.12	270.00	6,711.6	-2,075.61	742.8	-109.4	202.5	8.00	8.00	0.00
<b>7" ICP *NEW* - CECIL'S KERSEY FARM 17K-204 (P2)</b>										
<b>7,224.1</b>	<b>90.05</b>	<b>270.00</b>	<b>6,712.0</b>	<b>-2,076.00</b>	<b>742.8</b>	<b>-133.5</b>	<b>226.4</b>	<b>8.00</b>	<b>8.00</b>	<b>0.00</b>
7,300.0	90.05	270.00	6,711.9	-2,075.94	742.8	-209.4	301.7	0.00	0.00	0.00
7,400.0	90.05	270.00	6,711.9	-2,075.85	742.8	-309.4	400.9	0.00	0.00	0.00
7,500.0	90.05	270.00	6,711.8	-2,075.77	742.8	-409.4	500.1	0.00	0.00	0.00
7,600.0	90.05	270.00	6,711.7	-2,075.68	742.8	-509.4	599.3	0.00	0.00	0.00
7,700.0	90.05	270.00	6,711.6	-2,075.60	742.8	-609.4	698.5	0.00	0.00	0.00
7,800.0	90.05	270.00	6,711.5	-2,075.52	742.8	-709.4	797.7	0.00	0.00	0.00
7,900.0	90.05	270.00	6,711.4	-2,075.43	742.8	-809.4	896.9	0.00	0.00	0.00
8,000.0	90.05	270.00	6,711.3	-2,075.35	742.8	-909.4	996.0	0.00	0.00	0.00
8,100.0	90.05	270.00	6,711.3	-2,075.26	742.8	-1,009.4	1,095.2	0.00	0.00	0.00
8,200.0	90.05	270.00	6,711.2	-2,075.18	742.8	-1,109.4	1,194.4	0.00	0.00	0.00
8,300.0	90.05	270.00	6,711.1	-2,075.09	742.8	-1,209.4	1,293.6	0.00	0.00	0.00
8,400.0	90.05	270.00	6,711.0	-2,075.01	742.8	-1,309.4	1,392.8	0.00	0.00	0.00



# Planning Report



<b>Database:</b>	EDM 5000.1 Single User Db	<b>Local Co-ordinate Reference:</b>	Well CECIL'S KERSEY FARM 17K-204
<b>Company:</b>	PDC ENERGY	<b>TVD Reference:</b>	KB-EST @ 4636.0usft (Original Well Elev)
<b>Project:</b>	WELD COUNTY, COLORADO	<b>MD Reference:</b>	KB-EST @ 4636.0usft (Original Well Elev)
<b>Site:</b>	NW SW SEC. 17 T5N R64W 6th P.M.	<b>North Reference:</b>	True
<b>Well:</b>	CECIL'S KERSEY FARM 17K-204	<b>Survey Calculation Method:</b>	Minimum Curvature
<b>Wellbore:</b>	ORIGINAL WELLBORE		
<b>Design:</b>	PROPOSAL #2		

Planned Survey										
MD (usft)	Inc (°)	Azi (°)	TVD (usft)	SS (usft)	+N/-S (usft)	+E/-W (usft)	Vertical Section (usft)	Dogleg Rate (°/100usft)	Build Rate (°/100usft)	Turn Rate (°/100usft)
8,500.0	90.05	270.00	6,710.9	-2,074.92	742.8	-1,409.4	1,492.0	0.00	0.00	0.00
8,600.0	90.05	270.00	6,710.8	-2,074.83	742.8	-1,509.4	1,591.2	0.00	0.00	0.00
8,700.0	90.05	270.00	6,710.7	-2,074.75	742.8	-1,609.4	1,690.4	0.00	0.00	0.00
8,800.0	90.05	270.00	6,710.7	-2,074.66	742.8	-1,709.4	1,789.6	0.00	0.00	0.00
8,900.0	90.05	270.00	6,710.6	-2,074.58	742.8	-1,809.4	1,888.8	0.00	0.00	0.00
9,000.0	90.05	270.00	6,710.5	-2,074.49	742.8	-1,909.4	1,988.0	0.00	0.00	0.00
9,100.0	90.05	270.00	6,710.4	-2,074.40	742.8	-2,009.4	2,087.2	0.00	0.00	0.00
9,200.0	90.05	270.00	6,710.3	-2,074.32	742.8	-2,109.4	2,186.4	0.00	0.00	0.00
9,300.0	90.05	270.00	6,710.2	-2,074.23	742.8	-2,209.4	2,285.6	0.00	0.00	0.00
9,400.0	90.05	270.00	6,710.1	-2,074.14	742.8	-2,309.4	2,384.8	0.00	0.00	0.00
9,500.0	90.05	270.00	6,710.1	-2,074.06	742.8	-2,409.4	2,484.0	0.00	0.00	0.00
9,600.0	90.05	270.00	6,710.0	-2,073.97	742.8	-2,509.4	2,583.2	0.00	0.00	0.00
9,700.0	90.05	270.00	6,709.9	-2,073.88	742.8	-2,609.4	2,682.4	0.00	0.00	0.00
9,800.0	90.05	270.00	6,709.8	-2,073.79	742.8	-2,709.4	2,781.6	0.00	0.00	0.00
9,900.0	90.05	270.00	6,709.7	-2,073.71	742.8	-2,809.4	2,880.8	0.00	0.00	0.00
10,000.0	90.05	270.00	6,709.6	-2,073.62	742.8	-2,909.4	2,980.0	0.00	0.00	0.00
10,100.0	90.05	270.00	6,709.5	-2,073.53	742.8	-3,009.4	3,079.2	0.00	0.00	0.00
10,200.0	90.05	270.00	6,709.4	-2,073.44	742.8	-3,109.4	3,178.4	0.00	0.00	0.00
10,300.0	90.05	270.00	6,709.4	-2,073.36	742.8	-3,209.4	3,277.6	0.00	0.00	0.00
10,400.0	90.05	270.00	6,709.3	-2,073.27	742.8	-3,309.4	3,376.8	0.00	0.00	0.00
10,500.0	90.05	270.00	6,709.2	-2,073.18	742.8	-3,409.4	3,476.0	0.00	0.00	0.00
10,600.0	90.05	270.00	6,709.1	-2,073.09	742.8	-3,509.4	3,575.2	0.00	0.00	0.00
10,700.0	90.05	270.00	6,709.0	-2,073.00	742.8	-3,609.4	3,674.3	0.00	0.00	0.00
10,800.0	90.05	270.00	6,708.9	-2,072.91	742.8	-3,709.4	3,773.5	0.00	0.00	0.00
10,900.0	90.05	270.00	6,708.8	-2,072.82	742.8	-3,809.4	3,872.7	0.00	0.00	0.00
11,000.0	90.05	270.00	6,708.7	-2,072.73	742.8	-3,909.4	3,971.9	0.00	0.00	0.00
11,100.0	90.05	270.00	6,708.6	-2,072.65	742.8	-4,009.4	4,071.1	0.00	0.00	0.00
11,200.0	90.05	270.00	6,708.6	-2,072.56	742.8	-4,109.4	4,170.3	0.00	0.00	0.00
11,300.0	90.05	270.00	6,708.5	-2,072.47	742.8	-4,209.4	4,269.5	0.00	0.00	0.00
11,400.0	90.05	270.00	6,708.4	-2,072.38	742.8	-4,309.4	4,368.7	0.00	0.00	0.00
11,500.0	90.05	270.00	6,708.3	-2,072.29	742.8	-4,409.4	4,467.9	0.00	0.00	0.00
11,600.0	90.05	270.00	6,708.2	-2,072.20	742.8	-4,509.4	4,567.1	0.00	0.00	0.00
11,700.0	90.05	270.00	6,708.1	-2,072.11	742.8	-4,609.4	4,666.3	0.00	0.00	0.00
11,800.0	90.05	270.00	6,708.0	-2,072.02	742.8	-4,709.4	4,765.5	0.00	0.00	0.00
11,900.0	90.05	270.00	6,707.9	-2,071.93	742.8	-4,809.4	4,864.7	0.00	0.00	0.00
12,000.0	90.05	270.00	6,707.8	-2,071.84	742.8	-4,909.4	4,963.9	0.00	0.00	0.00
12,100.0	90.05	270.00	6,707.7	-2,071.74	742.8	-5,009.4	5,063.1	0.00	0.00	0.00
12,200.0	90.05	270.00	6,707.7	-2,071.65	742.8	-5,109.4	5,162.3	0.00	0.00	0.00
12,300.0	90.05	270.00	6,707.6	-2,071.56	742.8	-5,209.4	5,261.5	0.00	0.00	0.00
12,400.0	90.05	270.00	6,707.5	-2,071.47	742.8	-5,309.4	5,360.7	0.00	0.00	0.00
12,500.0	90.05	270.00	6,707.4	-2,071.38	742.8	-5,409.4	5,459.9	0.00	0.00	0.00
12,600.0	90.05	270.00	6,707.3	-2,071.29	742.8	-5,509.4	5,559.1	0.00	0.00	0.00
12,700.0	90.05	270.00	6,707.2	-2,071.20	742.8	-5,609.4	5,658.3	0.00	0.00	0.00
12,800.0	90.05	270.00	6,707.1	-2,071.11	742.8	-5,709.4	5,757.5	0.00	0.00	0.00
12,900.0	90.05	270.00	6,707.0	-2,071.01	742.8	-5,809.4	5,856.7	0.00	0.00	0.00
<b>BHL - CECIL'S KERSEY FARM 17K-204 (P2)</b>										
<b>12,914.3</b>	<b>90.05</b>	<b>270.00</b>	<b>6,707.0</b>	<b>-2,071.00</b>	<b>742.8</b>	<b>-5,823.7</b>	<b>5,870.9</b>	<b>0.00</b>	<b>0.00</b>	<b>0.00</b>

# Planning Report



<b>Database:</b>	EDM 5000.1 Single User Db	<b>Local Co-ordinate Reference:</b>	Well CECIL'S KERSEY FARM 17K-204
<b>Company:</b>	PDC ENERGY	<b>TVD Reference:</b>	KB-EST @ 4636.0usft (Original Well Elev)
<b>Project:</b>	WELD COUNTY, COLORADO	<b>MD Reference:</b>	KB-EST @ 4636.0usft (Original Well Elev)
<b>Site:</b>	NW SW SEC. 17 T5N R64W 6th P.M.	<b>North Reference:</b>	True
<b>Well:</b>	CECIL'S KERSEY FARM 17K-204	<b>Survey Calculation Method:</b>	Minimum Curvature
<b>Wellbore:</b>	ORIGINAL WELLBORE		
<b>Design:</b>	PROPOSAL #2		

Formations					
MD (usft)	TVD (usft)	Name	Lithology	Dip (°)	Dip Direction (°)
3,538.2	3,490.0	PARKMAN SANDSTONE			
4,267.2	4,200.0	SUSSEX SANDSTONE			
6,637.1	6,485.0	SHARON SPRINGS			
6,756.4	6,565.0	NIOBRARA A			
6,948.9	6,660.0	NIOBRARA B			

Plan Annotations				
MD (usft)	TVD (usft)	Local Coordinates		Comment
		+N/-S (usft)	+E/-W (usft)	
1,250.0	1,250.0	0.0	0.0	START NUDGE (2°/100ft BUR)
1,905.1	1,899.4	58.7	46.1	EOB TO 13.1° INC
5,413.4	5,316.4	684.1	537.2	END OF TANGENT
6,068.5	5,965.8	742.8	583.3	EOD TO VERTICAL
6,098.5	5,995.8	742.8	583.3	KOP (8°/100ft BUR)
7,224.1	6,712.0	742.8	-133.5	7" ICP *NEW* - CECIL'S KERSEY FARM 17K-204 (P2)
12,914.3	6,707.0	742.8	-5,823.7	BHL - CECIL'S KERSEY FARM 17K-204 (P2)