

PDC ENERGY

**WELD COUNTY, COLORADO
NW SW SEC. 17 T5N R64W 6th P.M.
CECIL'S KERSEY FARM 17B-302**

ORIGINAL WELLBORE

15 September, 2015

Plan: PROPOSAL #2





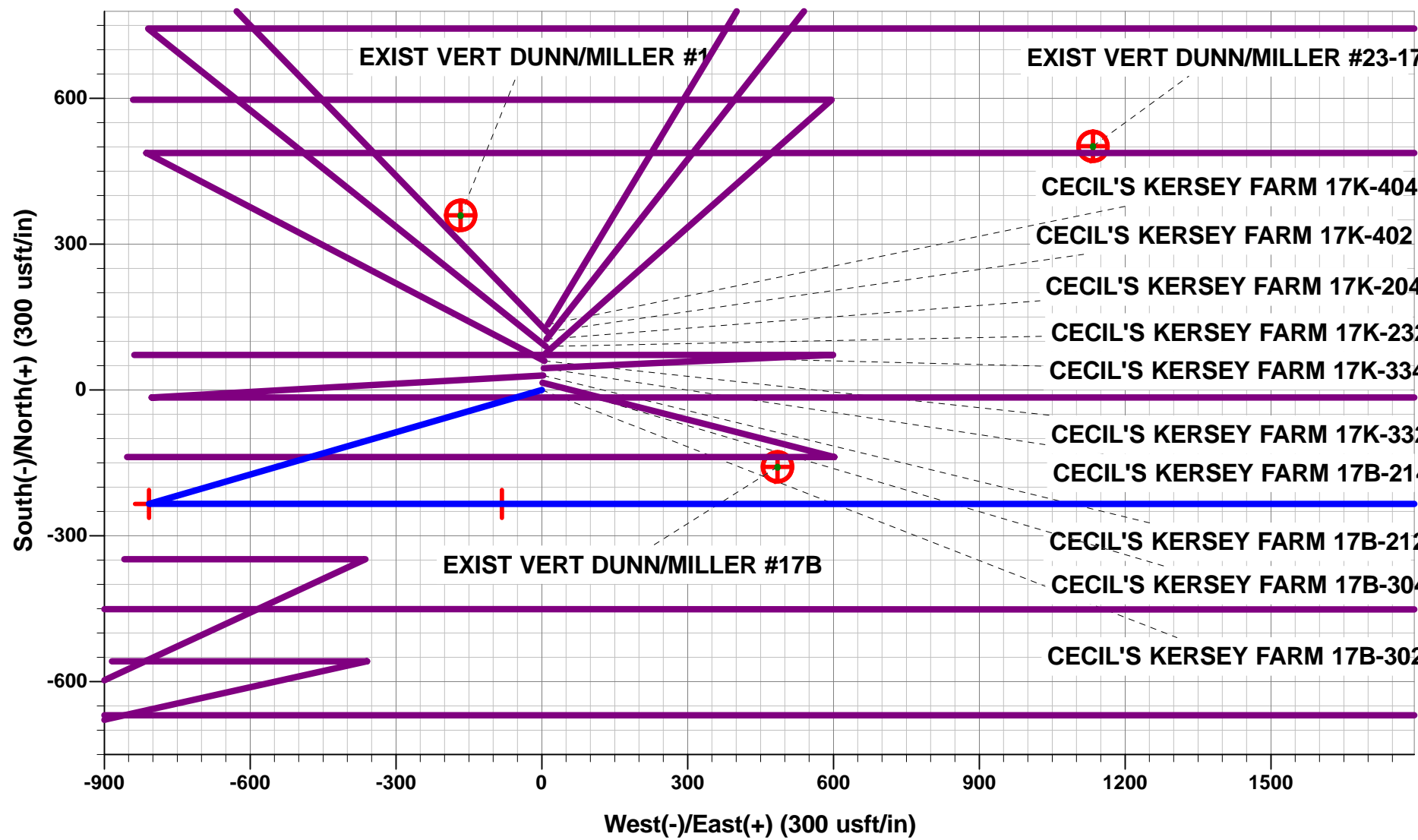
Project: WELD COUNTY, COLORADO
Site: NW SW SEC. 17 T5N R64W 6th P.M.
Well: CECIL'S KERSEY FARM 17B-302
Wellbore: ORIGINAL WELLBORE
Design: PROPOSAL #2

ANNOTATIONS

TVD	MD	Inc	Azi	+N/-S	+E/-W	VSec	Dep	Annotation
1050.0	1050.0	0.00	0.00	0.0	0.0	0.0	0.0	START NUDGE (2°/100ft BUR)
1645.6	1650.0	12.00	253.83	-17.4	-60.1	-59.0	62.6	EOB TO 12° INC
5014.3	5093.9	12.00	253.83	-216.9	-747.9	-733.8	778.7	END OF TANGENT
5609.9	5693.9	0.00	253.83	-234.3	-808.0	-792.8	841.3	EOD TO VERTICAL
6065.9	6149.9	0.00	0.00	-234.3	-808.0	-792.8	841.3	KOP (8°/100ft BUR)
6782.0	7284.6	90.78	90.00	-234.3	-82.1	-68.1	1567.2	7" ICP *NEW* - CECIL'S KERSEY FARM 17B-302 (P2)
6727.0	11329.6	90.78	90.00	-234.3	3962.5	3969.4	5611.8	BHL - CECIL'S KERSEY FARM 17B-302 (P2)

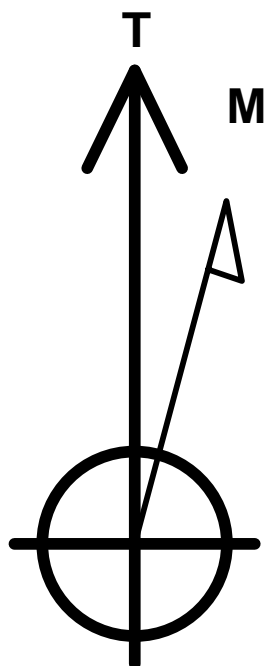
WELLBORE TARGET DETAILS (LAT/LONG)

Name	TVD	+N/-S	+E/-W	Latitude	Longitude
KOP - CECIL'S KERSEY FARM 17B-302 (P2)	6065.9	-234.3	-808.0	40.395731	-104.583332
7" ICP *NEW* - CECIL'S KERSEY FARM 17B-302 (P2)	6782.0	-234.3	-82.1	40.395731	-104.580726
BHL - CECIL'S KERSEY FARM 17B-302 (P2)	6727.0	-234.3	3962.5	40.395730	-104.566205



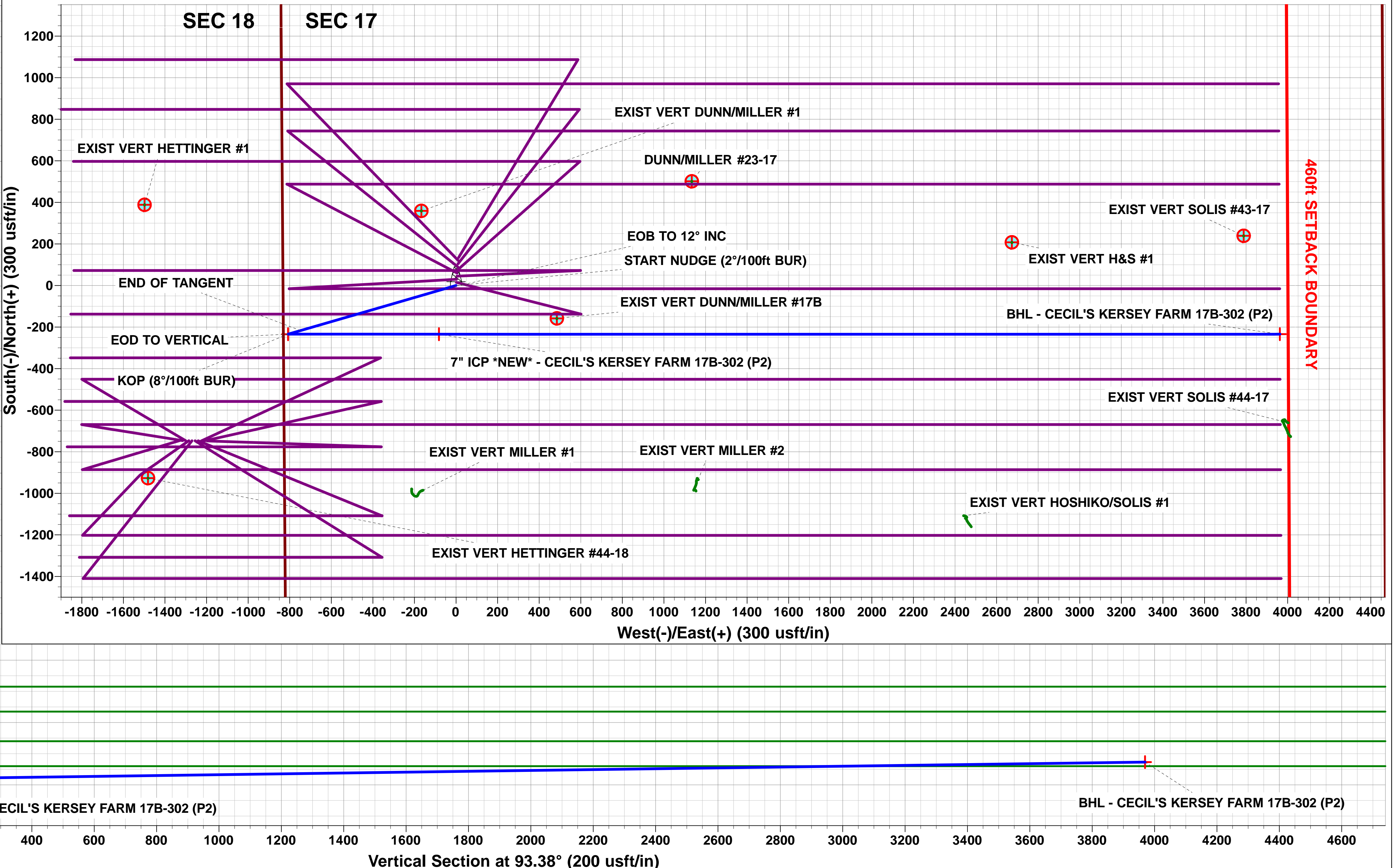
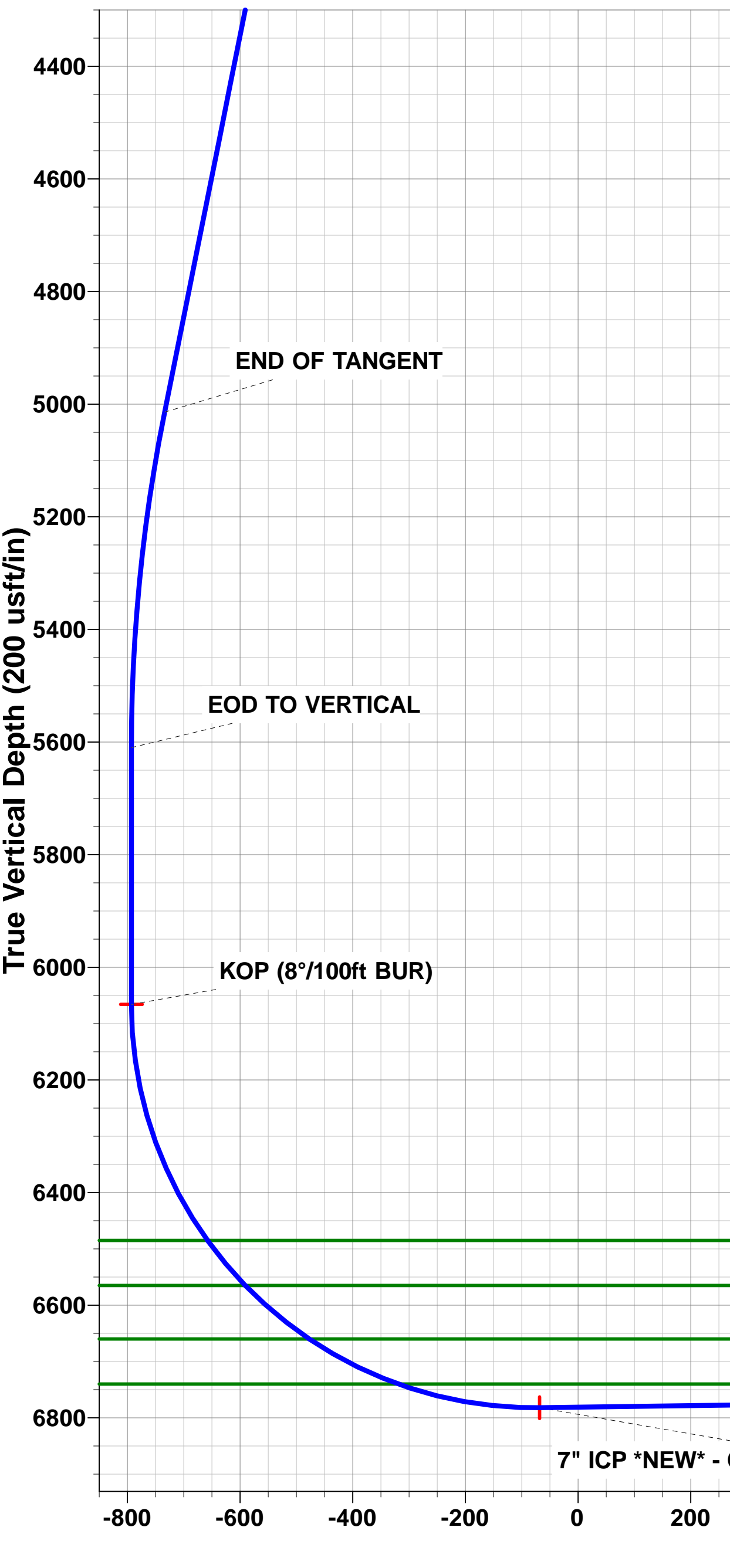
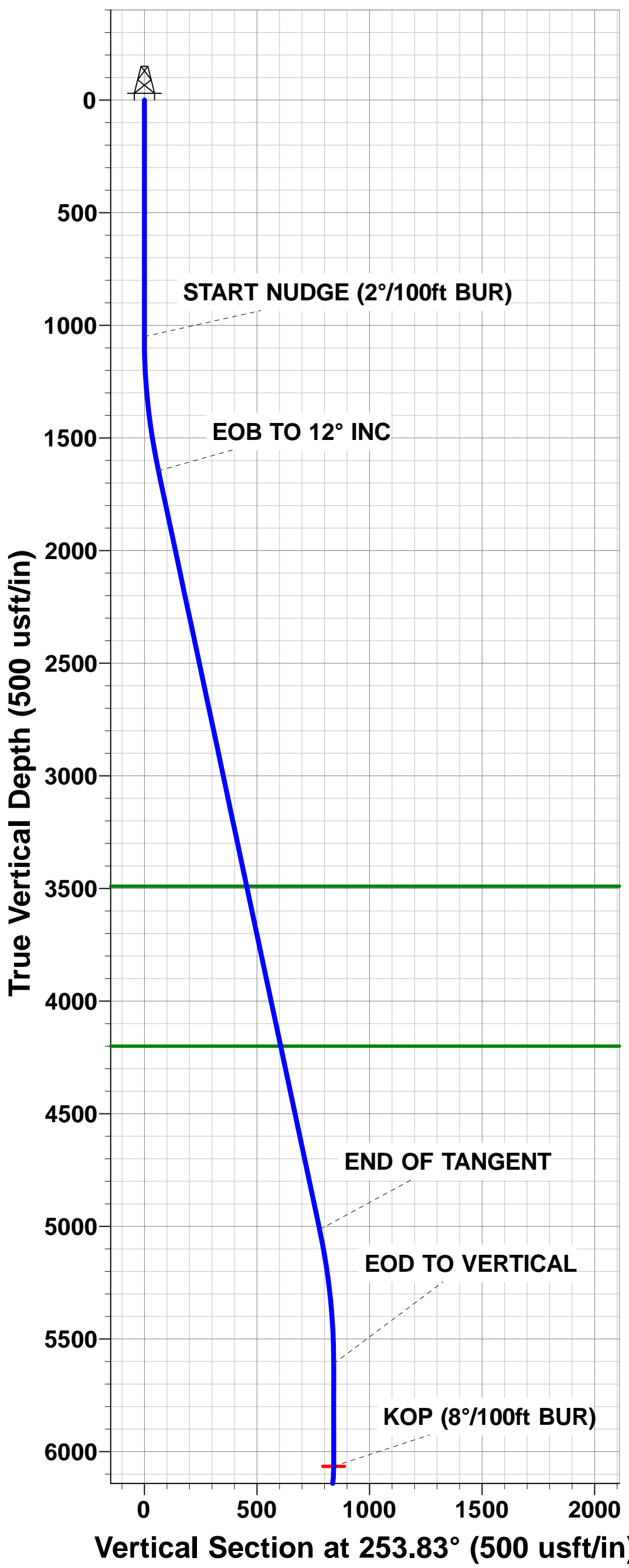
PROPOSED LOCAL COORDINATES:

SHL: 1620ft FSL & 832ft FWL of Sec 17
7" ICP *NEW*: 1387ft FSL & 747.5ft FWL of Sec 17
BHL: 1343ft FSL & 500ft FEL of Sec 17



Azimuths to True North
Magnetic North: 8.30°

Magnetic Field
Strength: 52614.5snT
Dip Angle: 66.93°
Date: 06/09/2015
Model: IGRF2015



Planning Report



Database:	EDM 5000.1 Single User Db	Local Co-ordinate Reference:	Well CECIL'S KERSEY FARM 17B-302
Company:	PDC ENERGY	TVD Reference:	KB-EST @ 4636.0usft (Original Well Elev)
Project:	WELD COUNTY, COLORADO	MD Reference:	KB-EST @ 4636.0usft (Original Well Elev)
Site:	NW SW SEC. 17 T5N R64W 6th P.M.	North Reference:	True
Well:	CECIL'S KERSEY FARM 17B-302	Survey Calculation Method:	Minimum Curvature
Wellbore:	ORIGINAL WELLBORE		
Design:	PROPOSAL #2		

Project	WELD COUNTY, COLORADO		
Map System:	US State Plane 1983	System Datum:	Mean Sea Level
Geo Datum:	North American Datum 1983		
Map Zone:	Colorado Northern Zone		Using geodetic scale factor

Site	NW SW SEC. 17 T5N R64W 6th P.M.		
Site Position:		Northing:	1,388,702.00 usft
From:	Lat/Long	Easting:	3,256,129.74 usft
Position Uncertainty:	0.0 usft	Slot Radius:	1.10000ft
		Latitude:	40.396743
		Longitude:	-104.580386
		Grid Convergence:	0.59 °

Well	CECIL'S KERSEY FARM 17B-302		
Well Position	+N-S	-134.4 usft	Northing: 1,388,567.45 usft
	+E-W	-12.5 usft	Easting: 3,256,118.60 usft
Position Uncertainty		0.0 usft	Wellhead Elevation: usft
			Latitude: 40.396374
			Longitude: -104.580431
			Ground Level: 4,623.0 usft

Wellbore	ORIGINAL WELLBORE				
Magnetics	Model Name	Sample Date	Declination (°)	Dip Angle (°)	Field Strength (nT)
	IGRF2015	06/09/2015	8.30	66.93	52,614

Design	PROPOSAL #2			
Audit Notes:				
Version:	Phase:	PROTOTYPE	Tie On Depth:	0.0
Vertical Section:	Depth From (TVD) (usft)	+N-S (usft)	+E-W (usft)	Direction (°)
	6,727.0	0.0	0.0	93.38

Plan Sections											
MD (usft)	Inc (°)	Azi (°)	Vertical Depth	SS (usft)	+N-S (usft)	+E-W (usft)	Dogleg Rate (°/100usf)	Build Rate (°/100usf)	Turn Rate (°/100usf)	TFO (°)	Target
0.0	0.00	0.00	0.0	-4,636.0	0.0	0.0	0.00	0.00	0.00	0.00	
1,050.0	0.00	0.00	1,050.0	-3,586.0	0.0	0.0	0.00	0.00	0.00	0.00	
1,650.0	12.00	253.83	1,645.7	-2,990.3	-17.4	-60.1	2.00	2.00	0.00	253.83	
5,093.9	12.00	253.83	5,014.2	378.2	-216.9	-747.9	0.00	0.00	0.00	0.00	
5,693.9	0.00	0.00	5,609.9	973.9	-234.3	-808.0	2.00	-2.00	0.00	180.00	
6,149.9	0.00	0.00	6,065.9	1,429.9	-234.3	-808.0	0.00	0.00	0.00	0.00	KOP - CECIL'S KEI
7,284.6	90.78	90.00	6,782.0	2,146.0	-234.3	-82.1	8.00	8.00	7.93	90.00	7" ICP *NEW* - CEI
11,329.6	90.78	90.00	6,727.0	2,091.0	-234.3	3,962.5	0.00	0.00	0.00	0.00	BHL - CECIL'S KEF

Planning Report



Database:	EDM 5000.1 Single User Db	Local Co-ordinate Reference:	Well CECIL'S KERSEY FARM 17B-302
Company:	PDC ENERGY	TVD Reference:	KB-EST @ 4636.0usft (Original Well Elev)
Project:	WELD COUNTY, COLORADO	MD Reference:	KB-EST @ 4636.0usft (Original Well Elev)
Site:	NW SW SEC. 17 T5N R64W 6th P.M.	North Reference:	True
Well:	CECIL'S KERSEY FARM 17B-302	Survey Calculation Method:	Minimum Curvature
Wellbore:	ORIGINAL WELLBORE		
Design:	PROPOSAL #2		

Planned Survey

MD (usft)	Inc (°)	Azi (°)	TVD (usft)	SS (usft)	+N/-S (usft)	+E/-W (usft)	Vertical Section (usft)	Dogleg Rate (°/100usft)	Build Rate (°/100usft)	Turn Rate (°/100usft)
0.0	0.00	0.00	0.0	4,636.00	0.0	0.0	0.0	0.00	0.00	0.00
100.0	0.00	0.00	100.0	4,536.00	0.0	0.0	0.0	0.00	0.00	0.00
200.0	0.00	0.00	200.0	4,436.00	0.0	0.0	0.0	0.00	0.00	0.00
300.0	0.00	0.00	300.0	4,336.00	0.0	0.0	0.0	0.00	0.00	0.00
400.0	0.00	0.00	400.0	4,236.00	0.0	0.0	0.0	0.00	0.00	0.00
500.0	0.00	0.00	500.0	4,136.00	0.0	0.0	0.0	0.00	0.00	0.00
600.0	0.00	0.00	600.0	4,036.00	0.0	0.0	0.0	0.00	0.00	0.00
700.0	0.00	0.00	700.0	3,936.00	0.0	0.0	0.0	0.00	0.00	0.00
800.0	0.00	0.00	800.0	3,836.00	0.0	0.0	0.0	0.00	0.00	0.00
900.0	0.00	0.00	900.0	3,736.00	0.0	0.0	0.0	0.00	0.00	0.00
1,000.0	0.00	0.00	1,000.0	3,636.00	0.0	0.0	0.0	0.00	0.00	0.00
START NUDGE (2°/100ft BUR)										
1,050.0	0.00	0.00	1,050.0	3,586.00	0.0	0.0	0.0	0.00	0.00	0.00
1,100.0	1.00	253.83	1,100.0	3,536.00	-0.1	-0.4	-0.4	2.00	2.00	0.00
1,200.0	3.00	253.83	1,199.9	3,436.07	-1.1	-3.8	-3.7	2.00	2.00	0.00
1,300.0	5.00	253.83	1,299.7	3,336.32	-3.0	-10.5	-10.3	2.00	2.00	0.00
1,400.0	7.00	253.83	1,399.1	3,236.87	-5.9	-20.5	-20.1	2.00	2.00	0.00
1,500.0	9.00	253.83	1,498.2	3,137.85	-9.8	-33.9	-33.2	2.00	2.00	0.00
1,600.0	11.00	253.83	1,596.6	3,039.37	-14.7	-50.6	-49.6	2.00	2.00	0.00
EOB TO 12° INC										
1,650.0	12.00	253.83	1,645.6	2,990.38	-17.4	-60.1	-59.0	2.00	2.00	0.00
1,700.0	12.00	253.83	1,694.5	2,941.47	-20.3	-70.1	-68.8	0.00	0.00	0.00
1,800.0	12.00	253.83	1,792.3	2,843.66	-26.1	-90.1	-88.4	0.00	0.00	0.00
1,900.0	12.00	253.83	1,890.2	2,745.84	-31.9	-110.1	-108.0	0.00	0.00	0.00
2,000.0	12.00	253.83	1,988.0	2,648.03	-37.7	-130.0	-127.6	0.00	0.00	0.00
2,100.0	12.00	253.83	2,085.8	2,550.21	-43.5	-150.0	-147.2	0.00	0.00	0.00
2,200.0	12.00	253.83	2,183.6	2,452.40	-49.3	-170.0	-166.8	0.00	0.00	0.00
2,300.0	12.00	253.83	2,281.4	2,354.58	-55.1	-189.9	-186.3	0.00	0.00	0.00
2,400.0	12.00	253.83	2,379.2	2,256.77	-60.9	-209.9	-205.9	0.00	0.00	0.00
2,500.0	12.00	253.83	2,477.0	2,158.95	-66.7	-229.9	-225.5	0.00	0.00	0.00
2,600.0	12.00	253.83	2,574.9	2,061.14	-72.4	-249.8	-245.1	0.00	0.00	0.00
2,700.0	12.00	253.83	2,672.7	1,963.33	-78.2	-269.8	-264.7	0.00	0.00	0.00
2,800.0	12.00	253.83	2,770.5	1,865.51	-84.0	-289.8	-284.3	0.00	0.00	0.00
2,900.0	12.00	253.83	2,868.3	1,767.70	-89.8	-309.7	-303.9	0.00	0.00	0.00
3,000.0	12.00	253.83	2,966.1	1,669.88	-95.6	-329.7	-323.5	0.00	0.00	0.00
3,100.0	12.00	253.83	3,063.9	1,572.07	-101.4	-349.7	-343.1	0.00	0.00	0.00
3,200.0	12.00	253.83	3,161.7	1,474.25	-107.2	-369.7	-362.7	0.00	0.00	0.00
3,300.0	12.00	253.83	3,259.6	1,376.44	-113.0	-389.6	-382.3	0.00	0.00	0.00
3,400.0	12.00	253.83	3,357.4	1,278.62	-118.8	-409.6	-401.9	0.00	0.00	0.00
3,500.0	12.00	253.83	3,455.2	1,180.81	-124.6	-429.6	-421.5	0.00	0.00	0.00
PARKMAN SANDSTONE										
3,535.6	12.00	253.83	3,490.0	1,146.00	-126.6	-436.7	-428.4	0.00	0.00	0.00
3,600.0	12.00	253.83	3,553.0	1,082.99	-130.4	-449.5	-441.1	0.00	0.00	0.00
3,700.0	12.00	253.83	3,650.8	985.18	-136.1	-469.5	-460.7	0.00	0.00	0.00
3,800.0	12.00	253.83	3,748.6	887.37	-141.9	-489.5	-480.2	0.00	0.00	0.00
3,900.0	12.00	253.83	3,846.4	789.55	-147.7	-509.4	-499.8	0.00	0.00	0.00
4,000.0	12.00	253.83	3,944.3	691.74	-153.5	-529.4	-519.4	0.00	0.00	0.00
4,100.0	12.00	253.83	4,042.1	593.92	-159.3	-549.4	-539.0	0.00	0.00	0.00
4,200.0	12.00	253.83	4,139.9	496.11	-165.1	-569.4	-558.6	0.00	0.00	0.00
SUSSEX SANDSTONE										
4,261.5	12.00	253.83	4,200.0	436.00	-168.7	-581.6	-570.7	0.00	0.00	0.00
4,300.0	12.00	253.83	4,237.7	398.29	-170.9	-589.3	-578.2	0.00	0.00	0.00
4,400.0	12.00	253.83	4,335.5	300.48	-176.7	-609.3	-597.8	0.00	0.00	0.00
4,500.0	12.00	253.83	4,433.3	202.66	-182.5	-629.3	-617.4	0.00	0.00	0.00

Planning Report



Database:	EDM 5000.1 Single User Db	Local Co-ordinate Reference:	Well CECIL'S KERSEY FARM 17B-302
Company:	PDC ENERGY	TVD Reference:	KB-EST @ 4636.0usft (Original Well Elev)
Project:	WELD COUNTY, COLORADO	MD Reference:	KB-EST @ 4636.0usft (Original Well Elev)
Site:	NW SW SEC. 17 T5N R64W 6th P.M.	North Reference:	True
Well:	CECIL'S KERSEY FARM 17B-302	Survey Calculation Method:	Minimum Curvature
Wellbore:	ORIGINAL WELLBORE		
Design:	PROPOSAL #2		

Planned Survey										
MD (usft)	Inc (°)	Azi (°)	TVD (usft)	SS (usft)	+N/-S (usft)	+E/-W (usft)	Vertical Section (usft)	Dogleg Rate (°/100usft)	Build Rate (°/100usft)	Turn Rate (°/100usft)
4,600.0	12.00	253.83	4,531.1	104.85	-188.3	-649.2	-637.0	0.00	0.00	0.00
4,700.0	12.00	253.83	4,629.0	7.04	-194.1	-669.2	-656.6	0.00	0.00	0.00
4,800.0	12.00	253.83	4,726.8	-90.78	-199.8	-689.2	-676.2	0.00	0.00	0.00
4,900.0	12.00	253.83	4,824.6	-188.59	-205.6	-709.1	-695.8	0.00	0.00	0.00
5,000.0	12.00	253.83	4,922.4	-286.41	-211.4	-729.1	-715.4	0.00	0.00	0.00
END OF TANGENT										
5,093.9	12.00	253.83	5,014.3	-378.26	-216.9	-747.9	-733.8	0.00	0.00	0.00
5,100.0	11.88	253.83	5,020.2	-384.22	-217.2	-749.1	-735.0	2.01	-2.01	0.00
5,200.0	9.88	253.83	5,118.4	-482.42	-222.5	-767.2	-752.7	2.00	-2.00	0.00
5,300.0	7.88	253.83	5,217.2	-581.22	-226.8	-782.0	-767.3	2.00	-2.00	0.00
5,400.0	5.88	253.83	5,316.5	-680.49	-230.1	-793.5	-778.6	2.00	-2.00	0.00
5,500.0	3.88	253.83	5,416.1	-780.13	-232.5	-801.7	-786.6	2.00	-2.00	0.00
5,600.0	1.88	253.83	5,516.0	-879.99	-233.9	-806.5	-791.3	2.00	-2.00	0.00
EOD TO VERTICAL										
5,693.9	0.00	253.83	5,609.9	-973.88	-234.3	-808.0	-792.8	2.00	-2.00	0.00
5,700.0	0.00	0.00	5,616.0	-979.98	-234.3	-808.0	-792.8	0.01	-0.01	0.00
5,800.0	0.00	0.00	5,716.0	-1,079.98	-234.3	-808.0	-792.8	0.00	0.00	0.00
5,900.0	0.00	0.00	5,816.0	-1,179.98	-234.3	-808.0	-792.8	0.00	0.00	0.00
6,000.0	0.00	0.00	5,916.0	-1,279.98	-234.3	-808.0	-792.8	0.00	0.00	0.00
6,100.0	0.00	0.00	6,016.0	-1,379.98	-234.3	-808.0	-792.8	0.00	0.00	0.00
KOP (8°/100ft BUR)										
6,149.9	0.00	0.00	6,065.9	-1,429.88	-234.3	-808.0	-792.8	0.00	0.00	0.00
6,200.0	4.01	90.00	6,115.9	-1,479.94	-234.3	-806.2	-791.0	8.00	8.00	0.00
6,300.0	12.01	90.00	6,214.9	-1,578.88	-234.3	-792.3	-777.1	8.00	8.00	0.00
6,400.0	20.01	90.00	6,310.9	-1,674.93	-234.3	-764.8	-749.6	8.00	8.00	0.00
6,500.0	28.01	90.00	6,402.2	-1,766.20	-234.3	-724.1	-709.0	8.00	8.00	0.00
SHARON SPRINGS										
6,597.6	35.82	90.00	6,485.0	-1,849.00	-234.3	-672.6	-657.6	8.00	8.00	0.00
6,600.0	36.01	90.00	6,486.9	-1,850.93	-234.3	-671.2	-656.2	8.00	8.00	0.00
6,700.0	44.01	90.00	6,563.5	-1,927.46	-234.3	-606.9	-592.0	8.00	8.00	0.00
NIORARA A										
6,702.1	44.18	90.00	6,565.0	-1,929.00	-234.3	-605.4	-590.6	8.00	8.00	0.00
6,800.0	52.01	90.00	6,630.3	-1,994.31	-234.3	-532.7	-517.9	8.00	8.00	0.00
NIORARA B										
6,850.6	56.05	90.00	6,660.0	-2,024.00	-234.3	-491.8	-477.1	8.00	8.00	0.00
6,900.0	60.01	90.00	6,686.2	-2,050.17	-234.3	-449.8	-435.2	8.00	8.00	0.00
7,000.0	68.01	90.00	6,730.0	-2,093.96	-234.3	-360.0	-345.6	8.00	8.00	0.00
NIORARA C										
7,028.2	70.26	90.00	6,740.0	-2,104.00	-234.3	-333.7	-319.3	8.00	8.00	0.00
7,100.0	76.01	90.00	6,760.8	-2,124.82	-234.3	-265.0	-250.7	8.00	8.00	0.00
7,200.0	84.01	90.00	6,778.2	-2,142.16	-234.3	-166.6	-152.5	8.00	8.00	0.00
7" ICP *NEW* - CECIL'S KERSEY FARM 17B-302 (P2)										
7,284.6	90.78	90.00	6,782.0	-2,146.00	-234.3	-82.1	-68.1	8.00	8.00	0.00
7,300.0	90.78	90.00	6,781.8	-2,145.79	-234.3	-66.7	-52.8	0.00	0.00	0.00
7,400.0	90.78	90.00	6,780.4	-2,144.43	-234.3	33.3	47.1	0.00	0.00	0.00
7,500.0	90.78	90.00	6,779.1	-2,143.07	-234.3	133.3	146.9	0.00	0.00	0.00
7,600.0	90.78	90.00	6,777.7	-2,141.71	-234.3	233.3	246.7	0.00	0.00	0.00
7,700.0	90.78	90.00	6,776.4	-2,140.35	-234.3	333.3	346.5	0.00	0.00	0.00
7,800.0	90.78	90.00	6,775.0	-2,138.99	-234.3	433.2	446.3	0.00	0.00	0.00
7,900.0	90.78	90.00	6,773.6	-2,137.64	-234.3	533.2	546.1	0.00	0.00	0.00
8,000.0	90.78	90.00	6,772.3	-2,136.28	-234.3	633.2	646.0	0.00	0.00	0.00
8,100.0	90.78	90.00	6,770.9	-2,134.92	-234.3	733.2	745.8	0.00	0.00	0.00
8,200.0	90.78	90.00	6,769.6	-2,133.56	-234.3	833.2	845.6	0.00	0.00	0.00

Planning Report



Database:	EDM 5000.1 Single User Db	Local Co-ordinate Reference:	Well CECIL'S KERSEY FARM 17B-302
Company:	PDC ENERGY	TVD Reference:	KB-EST @ 4636.0usft (Original Well Elev)
Project:	WELD COUNTY, COLORADO	MD Reference:	KB-EST @ 4636.0usft (Original Well Elev)
Site:	NW SW SEC. 17 T5N R64W 6th P.M.	North Reference:	True
Well:	CECIL'S KERSEY FARM 17B-302	Survey Calculation Method:	Minimum Curvature
Wellbore:	ORIGINAL WELLBORE		
Design:	PROPOSAL #2		

Planned Survey										
MD (usft)	Inc (°)	Azi (°)	TVD (usft)	SS (usft)	+N/-S (usft)	+E/-W (usft)	Vertical Section (usft)	Dogleg Rate (°/100usft)	Build Rate (°/100usft)	Turn Rate (°/100usft)
8,300.0	90.78	90.00	6,768.2	-2,132.20	-234.3	933.2	945.4	0.00	0.00	0.00
8,400.0	90.78	90.00	6,766.8	-2,130.84	-234.3	1,033.2	1,045.2	0.00	0.00	0.00
8,500.0	90.78	90.00	6,765.5	-2,129.48	-234.3	1,133.2	1,145.0	0.00	0.00	0.00
8,600.0	90.78	90.00	6,764.1	-2,128.12	-234.3	1,233.2	1,244.9	0.00	0.00	0.00
8,700.0	90.78	90.00	6,762.8	-2,126.76	-234.3	1,333.2	1,344.7	0.00	0.00	0.00
8,800.0	90.78	90.00	6,761.4	-2,125.40	-234.3	1,433.2	1,444.5	0.00	0.00	0.00
8,900.0	90.78	90.00	6,760.0	-2,124.04	-234.3	1,533.1	1,544.3	0.00	0.00	0.00
9,000.0	90.78	90.00	6,758.7	-2,122.69	-234.3	1,633.1	1,644.1	0.00	0.00	0.00
9,100.0	90.78	90.00	6,757.3	-2,121.33	-234.3	1,733.1	1,743.9	0.00	0.00	0.00
9,200.0	90.78	90.00	6,756.0	-2,119.97	-234.3	1,833.1	1,843.7	0.00	0.00	0.00
9,300.0	90.78	90.00	6,754.6	-2,118.61	-234.3	1,933.1	1,943.6	0.00	0.00	0.00
9,400.0	90.78	90.00	6,753.2	-2,117.25	-234.3	2,033.1	2,043.4	0.00	0.00	0.00
9,500.0	90.78	90.00	6,751.9	-2,115.89	-234.3	2,133.1	2,143.2	0.00	0.00	0.00
9,600.0	90.78	90.00	6,750.5	-2,114.53	-234.3	2,233.1	2,243.0	0.00	0.00	0.00
9,700.0	90.78	90.00	6,749.2	-2,113.17	-234.3	2,333.1	2,342.8	0.00	0.00	0.00
9,800.0	90.78	90.00	6,747.8	-2,111.81	-234.3	2,433.1	2,442.6	0.00	0.00	0.00
9,900.0	90.78	90.00	6,746.5	-2,110.45	-234.3	2,533.1	2,542.5	0.00	0.00	0.00
10,000.0	90.78	90.00	6,745.1	-2,109.09	-234.3	2,633.0	2,642.3	0.00	0.00	0.00
10,100.0	90.78	90.00	6,743.7	-2,107.73	-234.3	2,733.0	2,742.1	0.00	0.00	0.00
10,200.0	90.78	90.00	6,742.4	-2,106.38	-234.3	2,833.0	2,841.9	0.00	0.00	0.00
10,300.0	90.78	90.00	6,741.0	-2,105.02	-234.3	2,933.0	2,941.7	0.00	0.00	0.00
10,400.0	90.78	90.00	6,739.7	-2,103.66	-234.3	3,033.0	3,041.5	0.00	0.00	0.00
10,500.0	90.78	90.00	6,738.3	-2,102.30	-234.3	3,133.0	3,141.4	0.00	0.00	0.00
10,600.0	90.78	90.00	6,736.9	-2,100.94	-234.3	3,233.0	3,241.2	0.00	0.00	0.00
10,700.0	90.78	90.00	6,735.6	-2,099.58	-234.3	3,333.0	3,341.0	0.00	0.00	0.00
10,800.0	90.78	90.00	6,734.2	-2,098.22	-234.3	3,433.0	3,440.8	0.00	0.00	0.00
10,900.0	90.78	90.00	6,732.9	-2,096.86	-234.3	3,533.0	3,540.6	0.00	0.00	0.00
11,000.0	90.78	90.00	6,731.5	-2,095.50	-234.3	3,632.9	3,640.4	0.00	0.00	0.00
11,100.0	90.78	90.00	6,730.1	-2,094.14	-234.3	3,732.9	3,740.3	0.00	0.00	0.00
11,200.0	90.78	90.00	6,728.8	-2,092.78	-234.3	3,832.9	3,840.1	0.00	0.00	0.00
11,300.0	90.78	90.00	6,727.4	-2,091.42	-234.3	3,932.9	3,939.9	0.00	0.00	0.00
BHL - CECIL'S KERSEY FARM 17B-302 (P2)										
11,329.6	90.78	90.00	6,727.0	-2,091.00	-234.3	3,962.5	3,969.4	0.00	0.00	0.00

Formations						
MD (usft)	TVD (usft)	Name	Lithology	Dip (°)	Dip Direction (°)	
3,535.6	3,490.0	PARKMAN SANDSTONE				
4,261.5	4,200.0	SUSSEX SANDSTONE				
6,597.6	6,485.0	SHARON SPRINGS				
6,702.1	6,565.0	NIOBRARA A				
6,850.6	6,660.0	NIOBRARA B				
7,028.2	6,740.0	NIOBRARA C				

Planning Report



Database:	EDM 5000.1 Single User Db	Local Co-ordinate Reference:	Well CECIL'S KERSEY FARM 17B-302
Company:	PDC ENERGY	TVD Reference:	KB-EST @ 4636.0usft (Original Well Elev)
Project:	WELD COUNTY, COLORADO	MD Reference:	KB-EST @ 4636.0usft (Original Well Elev)
Site:	NW SW SEC. 17 T5N R64W 6th P.M.	North Reference:	True
Well:	CECIL'S KERSEY FARM 17B-302	Survey Calculation Method:	Minimum Curvature
Wellbore:	ORIGINAL WELLBORE		
Design:	PROPOSAL #2		

Plan Annotations

MD (usft)	TVD (usft)	Local Coordinates		Comment
		+N/-S (usft)	+E/-W (usft)	
1,050.0	1,050.0	0.0	0.0	START NUDGE (2°/100ft BUR)
1,650.0	1,645.6	-17.4	-60.1	EOB TO 12° INC
5,093.9	5,014.3	-216.9	-747.9	END OF TANGENT
5,693.9	5,609.9	-234.3	-808.0	EOD TO VERTICAL
6,149.9	6,065.9	-234.3	-808.0	KOP (8°/100ft BUR)
7,284.6	6,782.0	-234.3	-82.1	7" ICP *NEW* - CECIL'S KERSEY FARM 17B-302 (P2)
11,329.6	6,727.0	-234.3	3,962.5	BHL - CECIL'S KERSEY FARM 17B-302 (P2)