

PDC ENERGY

**WELD COUNTY, COLORADO
NW SW SEC. 17 T5N R64W 6th P.M.
CECIL'S KERSEY FARM 17B-212**

ORIGINAL WELLBORE

15 September, 2015

Plan: PROPOSAL #2





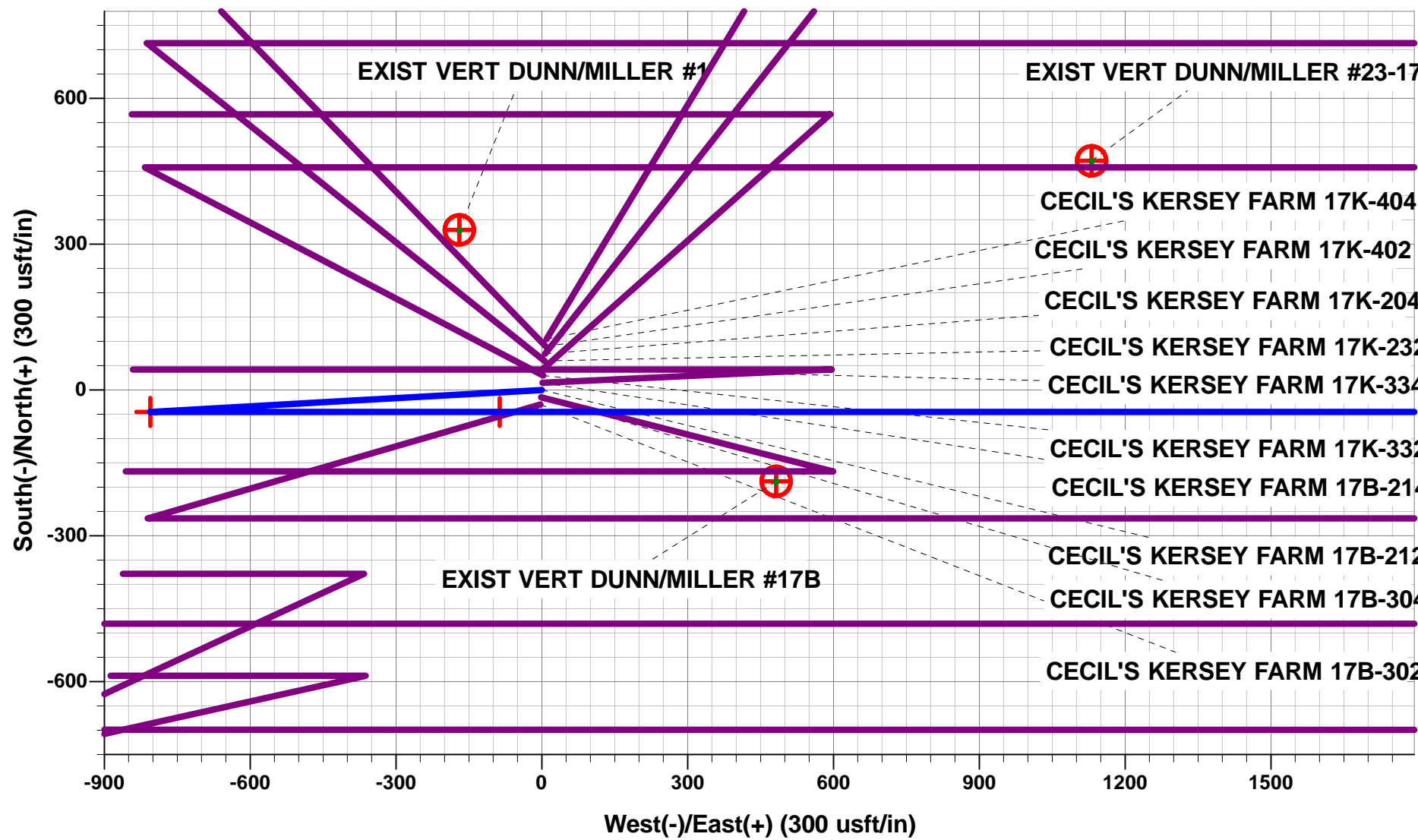
Project: WELD COUNTY, COLORADO
Site: NW SW SEC. 17 T5N R64W 6th P.M.
Well: CECIL'S KERSEY FARM 17B-212
Wellbore: ORIGINAL WELLBORE
Design: PROPOSAL #2

ANNOTATIONS

TVD	MD	Inc	Azi	+N/-S	+E/-W	Vsect	Dep	Annotation
1250.0	1250.0	0.00	0.00	0.0	0.0	0.0	0.0	START NUDGE (2°/100ft BUR)
1845.4	1849.8	12.00	266.79	-3.5	-62.5	-62.4	62.6	EOB TO 12° INC
5052.3	5128.3	12.00	266.79	-41.7	-742.9	-742.4	744.1	END OF TANGENT
5647.8	5728.2	0.00	0.00	-45.2	-805.4	-804.8	806.7	EOD TO VERTICAL
5985.8	6066.2	0.00	0.00	-45.2	-805.4	-804.8	806.7	KOP (8°/100ft BUR)
6702.0	7193.8	90.21	90.00	-45.2	-86.6	-86.1	1525.5	7" ICP *NEW* - CECIL'S KERSEY FARM 17B-212 (P2)
6687.0	11239.0	90.22	90.00	-45.2	3958.6	3958.8	5570.6	BHL - CECIL'S KERSEY FARM 17B-212 (P2)

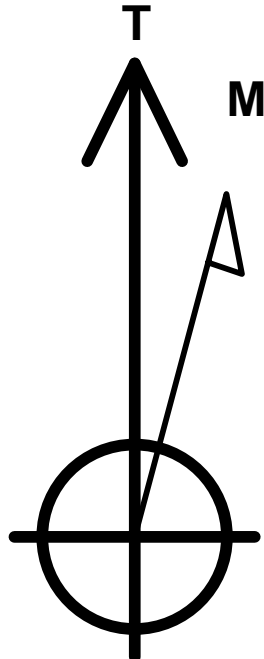
WELLBORE TARGET DETAILS (LAT/LONG)

Name	TVD	+N/-S	+E/-W	Latitude	Longitude
KOP - CECIL'S KERSEY FARM 17B-212 (P2)	5985.8	-45.2	-805.4	40.396332	-104.583313
7" ICP *NEW* - CECIL'S KERSEY FARM 17B-212 (P2)	6702.0	-45.2	-86.6	40.396332	-104.580732
BHL - CECIL'S KERSEY FARM 17B-212 (P2)	6687.0	-45.2	3958.6	40.396331	-104.566209



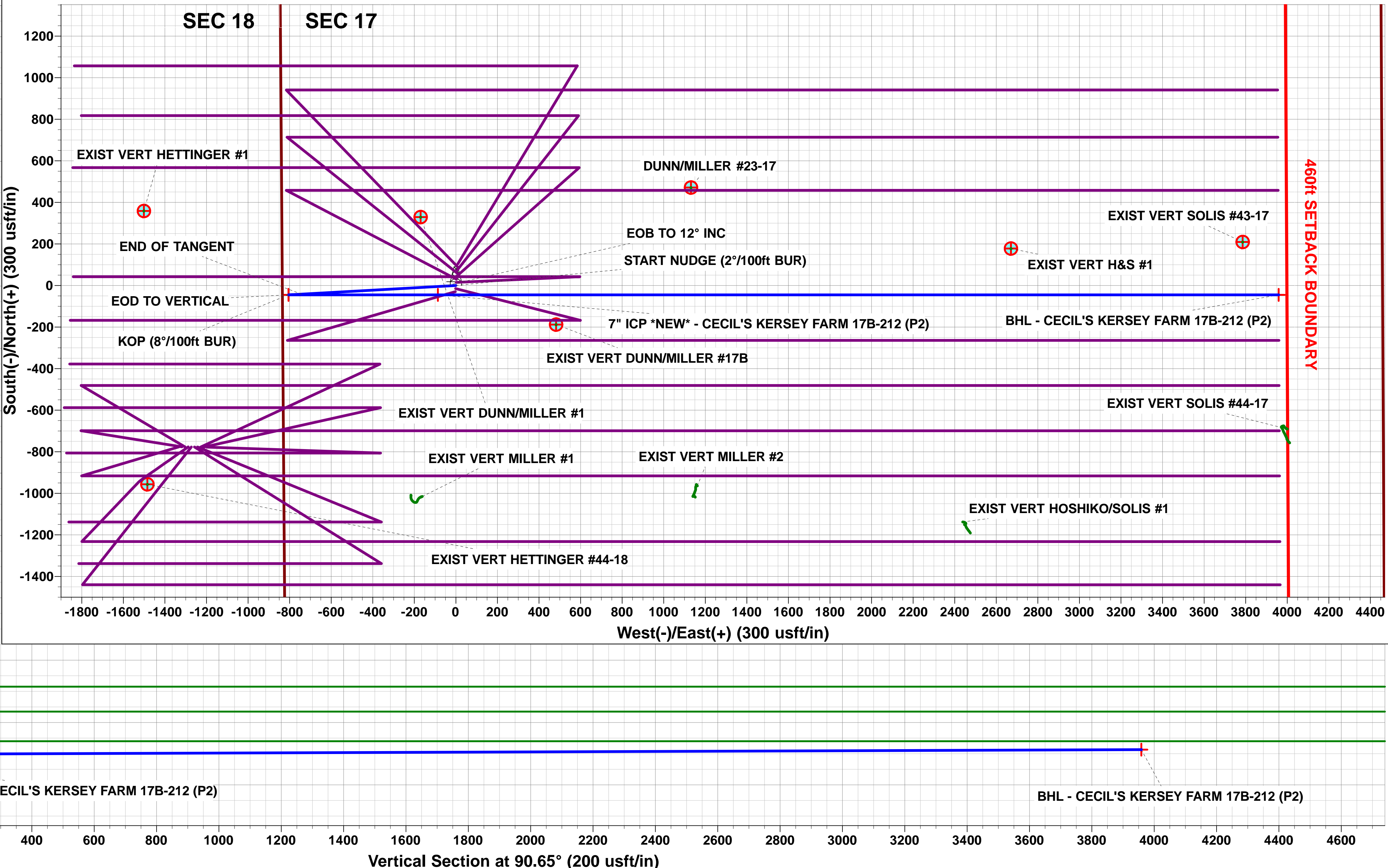
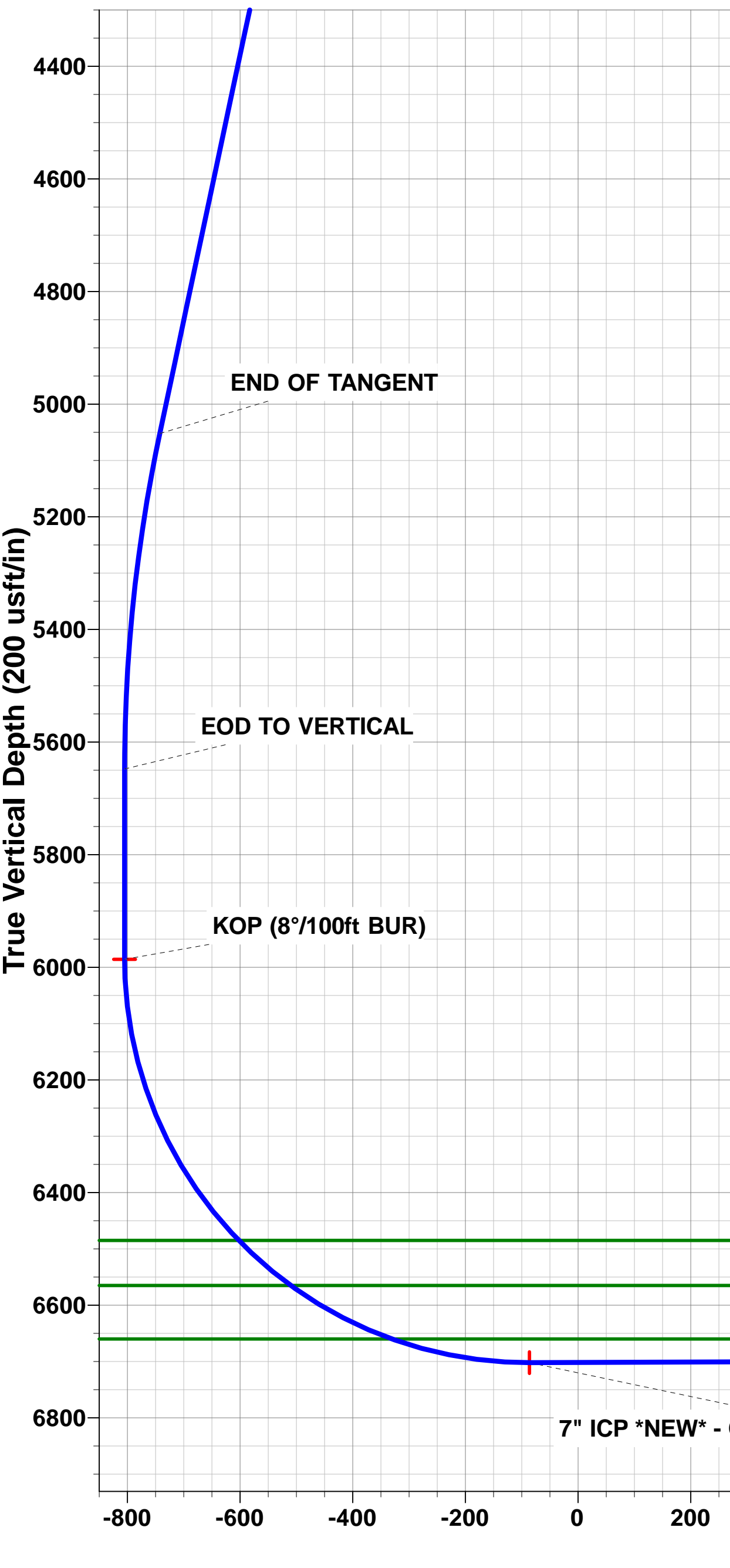
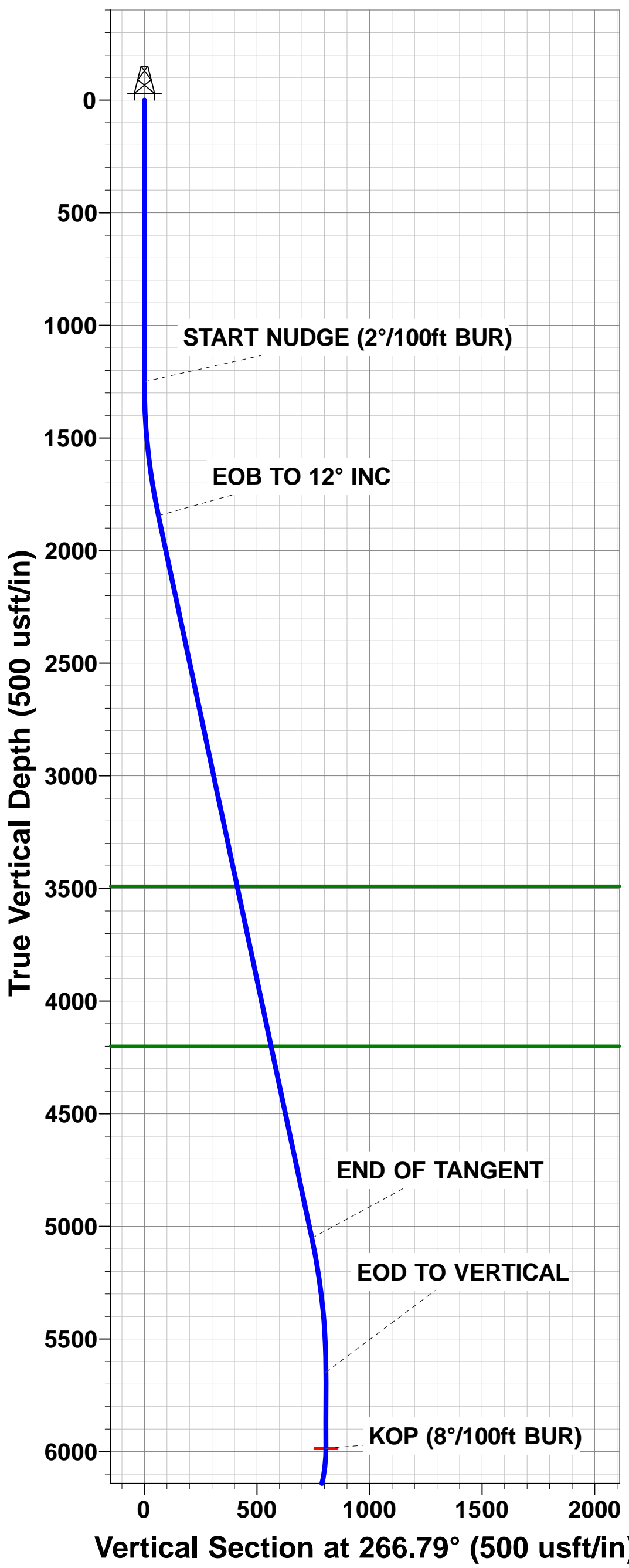
PROPOSED LOCAL COORDINATES:

SHL: 1650ft FSL & 835ft FWL of Sec 17
7" ICP *NEW*: 1606ft FSL & 747.5ft FWL of Sec 17
BHL: 1562ft FSL & 500ft FEL of Sec 17



Azimuths to True North
Magnetic North: 8.30°

Magnetic Field
Strength: 52614.5snT
Dip Angle: 66.93°
Date: 06/09/2015
Model: IGRF2015



Planning Report



Database:	EDM 5000.1 Single User Db	Local Co-ordinate Reference:	Well CECIL'S KERSEY FARM 17B-212
Company:	PDC ENERGY	TVD Reference:	KB-EST @ 4636.0usft (Original Well Elev)
Project:	WELD COUNTY, COLORADO	MD Reference:	KB-EST @ 4636.0usft (Original Well Elev)
Site:	NW SW SEC. 17 T5N R64W 6th P.M.	North Reference:	True
Well:	CECIL'S KERSEY FARM 17B-212	Survey Calculation Method:	Minimum Curvature
Wellbore:	ORIGINAL WELLBORE		
Design:	PROPOSAL #2		

Project	WELD COUNTY, COLORADO		
Map System:	US State Plane 1983	System Datum:	Mean Sea Level
Geo Datum:	North American Datum 1983		
Map Zone:	Colorado Northern Zone		Using geodetic scale factor

Site	NW SW SEC. 17 T5N R64W 6th P.M.		
Site Position:		Northing:	1,388,702.00 usft
From:	Lat/Long	Easting:	3,256,129.74 usft
Position Uncertainty:	0.0 usft	Slot Radius:	1.10000ft
		Latitude:	40.396743
		Longitude:	-104.580386
		Grid Convergence:	0.59 °

Well	CECIL'S KERSEY FARM 17B-212		
Well Position	+N/-S	-104.6 usft	Northing:
	+E/-W	-9.7 usft	Easting:
Position Uncertainty		0.0 usft	Wellhead Elevation:
			Latitude:
			Longitude:
			Ground Level:

Wellbore	ORIGINAL WELLBORE				
Magnetics	Model Name	Sample Date	Declination (°)	Dip Angle (°)	Field Strength (nT)
	IGRF2015	06/09/2015	8.30	66.93	52,615

Design	PROPOSAL #2			
Audit Notes:				
Version:	Phase:	PROTOTYPE	Tie On Depth:	0.0
Vertical Section:	Depth From (TVD) (usft)	+N/-S (usft)	+E/-W (usft)	Direction (°)
	6,687.0	0.0	0.0	90.65

Plan Sections											
MD (usft)	Inc (°)	Azi (°)	Vertical Depth	SS (usft)	+N/-S (usft)	+E/-W (usft)	Dogleg Rate (°/100usf)	Build Rate (°/100usf)	Turn Rate (°/100usf)	TFO (°)	Target
0.0	0.00	0.00	0.0	-4,636.0	0.0	0.0	0.00	0.00	0.00	0.00	
1,250.0	0.00	0.00	1,250.0	-3,386.0	0.0	0.0	0.00	0.00	0.00	0.00	
1,849.9	12.00	266.79	1,845.5	-2,790.5	-3.5	-62.5	2.00	2.00	0.00	266.79	
5,128.3	12.00	266.79	5,052.3	416.3	-41.7	-742.9	0.00	0.00	0.00	0.00	
5,728.2	0.00	0.00	5,647.8	1,011.8	-45.2	-805.4	2.00	-2.00	0.00	180.00	
6,066.2	0.00	0.00	5,985.8	1,349.8	-45.2	-805.4	0.00	0.00	0.00	0.00	KOP - CECIL'S KEI
7,193.8	90.21	90.00	6,702.0	2,066.0	-45.2	-86.6	8.00	8.00	7.98	90.00	7" ICP *NEW* - CEI
11,239.0	90.22	90.00	6,687.0	2,051.0	-45.2	3,958.6	0.00	0.00	0.00	2.26	BHL - CECIL'S KEF

Planning Report



Database:	EDM 5000.1 Single User Db	Local Co-ordinate Reference:	Well CECIL'S KERSEY FARM 17B-212
Company:	PDC ENERGY	TVD Reference:	KB-EST @ 4636.0usft (Original Well Elev)
Project:	WELD COUNTY, COLORADO	MD Reference:	KB-EST @ 4636.0usft (Original Well Elev)
Site:	NW SW SEC. 17 T5N R64W 6th P.M.	North Reference:	True
Well:	CECIL'S KERSEY FARM 17B-212	Survey Calculation Method:	Minimum Curvature
Wellbore:	ORIGINAL WELLBORE		
Design:	PROPOSAL #2		

Planned Survey										
MD (usft)	Inc (°)	Azi (°)	TVD (usft)	SS (usft)	+N/-S (usft)	+E/-W (usft)	Vertical Section (usft)	Dogleg Rate (°/100usft)	Build Rate (°/100usft)	Turn Rate (°/100usft)
0.0	0.00	0.00	0.0	4,636.00	0.0	0.0	0.0	0.00	0.00	0.00
100.0	0.00	0.00	100.0	4,536.00	0.0	0.0	0.0	0.00	0.00	0.00
200.0	0.00	0.00	200.0	4,436.00	0.0	0.0	0.0	0.00	0.00	0.00
300.0	0.00	0.00	300.0	4,336.00	0.0	0.0	0.0	0.00	0.00	0.00
400.0	0.00	0.00	400.0	4,236.00	0.0	0.0	0.0	0.00	0.00	0.00
500.0	0.00	0.00	500.0	4,136.00	0.0	0.0	0.0	0.00	0.00	0.00
600.0	0.00	0.00	600.0	4,036.00	0.0	0.0	0.0	0.00	0.00	0.00
700.0	0.00	0.00	700.0	3,936.00	0.0	0.0	0.0	0.00	0.00	0.00
800.0	0.00	0.00	800.0	3,836.00	0.0	0.0	0.0	0.00	0.00	0.00
900.0	0.00	0.00	900.0	3,736.00	0.0	0.0	0.0	0.00	0.00	0.00
1,000.0	0.00	0.00	1,000.0	3,636.00	0.0	0.0	0.0	0.00	0.00	0.00
1,100.0	0.00	0.00	1,100.0	3,536.00	0.0	0.0	0.0	0.00	0.00	0.00
1,200.0	0.00	0.00	1,200.0	3,436.00	0.0	0.0	0.0	0.00	0.00	0.00
START NUDGE (2°/100ft BUR)										
1,250.0	0.00	0.00	1,250.0	3,386.00	0.0	0.0	0.0	0.00	0.00	0.00
1,300.0	1.00	266.79	1,300.0	3,336.00	0.0	-0.4	-0.4	2.00	2.00	0.00
1,400.0	3.00	266.79	1,399.9	3,236.07	-0.2	-3.9	-3.9	2.00	2.00	0.00
1,500.0	5.00	266.79	1,499.7	3,136.32	-0.6	-10.9	-10.9	2.00	2.00	0.00
1,600.0	7.00	266.79	1,599.1	3,036.87	-1.2	-21.3	-21.3	2.00	2.00	0.00
1,700.0	9.00	266.79	1,698.2	2,937.85	-2.0	-35.2	-35.2	2.00	2.00	0.00
1,800.0	11.00	266.79	1,796.6	2,839.37	-2.9	-52.6	-52.5	2.00	2.00	0.00
EOB TO 12° INC										
1,849.8	12.00	266.79	1,845.4	2,790.55	-3.5	-62.5	-62.4	2.00	2.00	0.00
1,849.9	12.00	266.79	1,845.5	2,790.47	-3.5	-62.5	-62.4	2.00	2.00	0.00
1,900.0	12.00	266.79	1,894.5	2,741.47	-4.1	-72.9	-72.8	0.00	0.00	0.00
2,000.0	12.00	266.79	1,992.3	2,643.65	-5.3	-93.6	-93.6	0.00	0.00	0.00
2,100.0	12.00	266.79	2,090.2	2,545.84	-6.4	-114.4	-114.3	0.00	0.00	0.00
2,200.0	12.00	266.79	2,188.0	2,448.02	-7.6	-135.1	-135.1	0.00	0.00	0.00
2,300.0	12.00	266.79	2,285.8	2,350.21	-8.7	-155.9	-155.8	0.00	0.00	0.00
2,400.0	12.00	266.79	2,383.6	2,252.39	-9.9	-176.7	-176.5	0.00	0.00	0.00
2,500.0	12.00	266.79	2,481.4	2,154.58	-11.1	-197.4	-197.3	0.00	0.00	0.00
2,600.0	12.00	266.79	2,579.2	2,056.76	-12.2	-218.2	-218.0	0.00	0.00	0.00
2,700.0	12.00	266.79	2,677.1	1,958.95	-13.4	-238.9	-238.8	0.00	0.00	0.00
2,800.0	12.00	266.79	2,774.9	1,861.13	-14.6	-259.7	-259.5	0.00	0.00	0.00
2,900.0	12.00	266.79	2,872.7	1,763.31	-15.7	-280.4	-280.2	0.00	0.00	0.00
3,000.0	12.00	266.79	2,970.5	1,665.50	-16.9	-301.2	-301.0	0.00	0.00	0.00
3,100.0	12.00	266.79	3,068.3	1,567.68	-18.1	-321.9	-321.7	0.00	0.00	0.00
3,200.0	12.00	266.79	3,166.1	1,469.87	-19.2	-342.7	-342.5	0.00	0.00	0.00
3,300.0	12.00	266.79	3,263.9	1,372.05	-20.4	-363.5	-363.2	0.00	0.00	0.00
3,400.0	12.00	266.79	3,361.8	1,274.24	-21.6	-384.2	-383.9	0.00	0.00	0.00
3,500.0	12.00	266.79	3,459.6	1,176.42	-22.7	-405.0	-404.7	0.00	0.00	0.00
PARKMAN SANDSTONE										
3,531.1	12.00	266.79	3,490.0	1,146.00	-23.1	-411.4	-411.1	0.00	0.00	0.00
3,600.0	12.00	266.79	3,557.4	1,078.61	-23.9	-425.7	-425.4	0.00	0.00	0.00
3,700.0	12.00	266.79	3,655.2	980.79	-25.1	-446.5	-446.2	0.00	0.00	0.00
3,800.0	12.00	266.79	3,753.0	882.98	-26.2	-467.2	-466.9	0.00	0.00	0.00
3,900.0	12.00	266.79	3,850.8	785.16	-27.4	-488.0	-487.6	0.00	0.00	0.00
4,000.0	12.00	266.79	3,948.7	687.34	-28.6	-508.7	-508.4	0.00	0.00	0.00
4,100.0	12.00	266.79	4,046.5	589.53	-29.7	-529.5	-529.1	0.00	0.00	0.00
4,200.0	12.00	266.79	4,144.3	491.71	-30.9	-550.3	-549.9	0.00	0.00	0.00
SUSSEX SANDSTONE										
4,257.0	12.00	266.79	4,200.0	436.00	-31.5	-562.1	-561.7	0.00	0.00	0.00
4,300.0	12.00	266.79	4,242.1	393.90	-32.0	-571.0	-570.6	0.00	0.00	0.00
4,400.0	12.00	266.79	4,339.9	296.08	-33.2	-591.8	-591.3	0.00	0.00	0.00

Planning Report



Database:	EDM 5000.1 Single User Db	Local Co-ordinate Reference:	Well CECIL'S KERSEY FARM 17B-212
Company:	PDC ENERGY	TVD Reference:	KB-EST @ 4636.0usft (Original Well Elev)
Project:	WELD COUNTY, COLORADO	MD Reference:	KB-EST @ 4636.0usft (Original Well Elev)
Site:	NW SW SEC. 17 T5N R64W 6th P.M.	North Reference:	True
Well:	CECIL'S KERSEY FARM 17B-212	Survey Calculation Method:	Minimum Curvature
Wellbore:	ORIGINAL WELLBORE		
Design:	PROPOSAL #2		

Planned Survey

MD (usft)	Inc (°)	Azi (°)	TVD (usft)	SS (usft)	+N/-S (usft)	+E/-W (usft)	Vertical Section (usft)	Dogleg Rate (°/100usft)	Build Rate (°/100usft)	Turn Rate (°/100usft)
4,500.0	12.00	266.79	4,437.7	198.27	-34.4	-612.5	-612.1	0.00	0.00	0.00
4,600.0	12.00	266.79	4,535.5	100.45	-35.5	-633.3	-632.8	0.00	0.00	0.00
4,700.0	12.00	266.79	4,633.4	2.64	-36.7	-654.0	-653.6	0.00	0.00	0.00
4,800.0	12.00	266.79	4,731.2	-95.18	-37.9	-674.8	-674.3	0.00	0.00	0.00
4,900.0	12.00	266.79	4,829.0	-192.99	-39.0	-695.5	-695.0	0.00	0.00	0.00
5,000.0	12.00	266.79	4,926.8	-290.81	-40.2	-716.3	-715.8	0.00	0.00	0.00
5,100.0	12.00	266.79	5,024.6	-388.63	-41.4	-737.0	-736.5	0.00	0.00	0.00
END OF TANGENT										
5,128.3	12.00	266.79	5,052.3	-416.31	-41.7	-742.9	-742.4	0.00	0.00	0.00
5,200.0	10.56	266.79	5,122.6	-486.62	-42.5	-756.9	-756.4	2.00	-2.00	0.00
5,300.0	8.56	266.79	5,221.2	-585.23	-43.4	-773.5	-773.0	2.00	-2.00	0.00
5,400.0	6.56	266.79	5,320.4	-684.35	-44.1	-786.7	-786.1	2.00	-2.00	0.00
5,500.0	4.56	266.79	5,419.9	-783.87	-44.7	-796.3	-795.8	2.00	-2.00	0.00
5,600.0	2.56	266.79	5,519.7	-883.68	-45.0	-802.5	-802.0	2.00	-2.00	0.00
5,700.0	0.56	266.79	5,619.6	-983.63	-45.2	-805.3	-804.7	2.00	-2.00	0.00
EOD TO VERTICAL										
5,728.2	0.00	0.00	5,647.8	-1,011.83	-45.2	-805.4	-804.8	2.00	-2.00	0.00
5,800.0	0.00	0.00	5,719.6	-1,083.63	-45.2	-805.4	-804.8	0.00	0.00	0.00
5,900.0	0.00	0.00	5,819.6	-1,183.63	-45.2	-805.4	-804.8	0.00	0.00	0.00
6,000.0	0.00	0.00	5,919.6	-1,283.63	-45.2	-805.4	-804.8	0.00	0.00	0.00
KOP (8°/100ft BUR)										
6,066.2	0.00	0.00	5,985.8	-1,349.83	-45.2	-805.4	-804.8	0.00	0.00	0.00
6,100.0	2.71	90.00	6,019.6	-1,383.62	-45.2	-804.6	-804.0	8.01	8.01	0.00
6,200.0	10.71	90.00	6,118.9	-1,482.86	-45.2	-792.9	-792.4	8.00	8.00	0.00
6,300.0	18.71	90.00	6,215.5	-1,579.50	-45.2	-767.6	-767.0	8.00	8.00	0.00
6,400.0	26.71	90.00	6,307.7	-1,671.68	-45.2	-729.0	-728.4	8.00	8.00	0.00
6,500.0	34.71	90.00	6,393.6	-1,757.59	-45.2	-678.0	-677.4	8.00	8.00	0.00
6,600.0	42.71	90.00	6,471.6	-1,835.56	-45.2	-615.5	-614.9	8.00	8.00	0.00
SHARON SPRINGS										
6,618.5	44.19	90.00	6,485.0	-1,849.00	-45.2	-602.8	-602.2	8.00	8.00	0.00
6,700.0	50.71	90.00	6,540.1	-1,904.08	-45.2	-542.8	-542.2	8.00	8.00	0.00
NIORARA A										
6,740.8	53.97	90.00	6,565.0	-1,929.00	-45.2	-510.5	-509.9	8.00	8.00	0.00
6,800.0	58.71	90.00	6,597.8	-1,961.81	-45.2	-461.2	-460.7	8.00	8.00	0.00
6,900.0	66.71	90.00	6,643.6	-2,007.63	-45.2	-372.4	-371.9	8.00	8.00	0.00
NIORARA B										
6,944.7	70.28	90.00	6,660.0	-2,024.00	-45.2	-330.9	-330.3	8.00	8.00	0.00
7,000.0	74.71	90.00	6,676.6	-2,040.64	-45.2	-278.1	-277.6	8.00	8.00	0.00
7,100.0	82.71	90.00	6,696.2	-2,060.21	-45.2	-180.1	-179.6	8.00	8.00	0.00
7" ICP *NEW* - CECIL'S KERSEY FARM 17B-212 (P2)										
7,193.8	90.21	90.00	6,702.0	-2,066.00	-45.2	-86.6	-86.1	8.00	8.00	0.00
7,200.0	90.21	90.00	6,702.0	-2,065.98	-45.2	-80.4	-79.9	0.00	0.00	0.00
7,300.0	90.21	90.00	6,701.6	-2,065.61	-45.2	19.6	20.1	0.00	0.00	0.00
7,400.0	90.21	90.00	6,701.3	-2,065.25	-45.2	119.6	120.1	0.00	0.00	0.00
7,500.0	90.21	90.00	6,700.9	-2,064.89	-45.2	219.6	220.1	0.00	0.00	0.00
7,600.0	90.21	90.00	6,700.5	-2,064.52	-45.2	319.6	320.1	0.00	0.00	0.00
7,700.0	90.21	90.00	6,700.2	-2,064.16	-45.2	419.6	420.1	0.00	0.00	0.00
7,800.0	90.21	90.00	6,699.8	-2,063.80	-45.2	519.6	520.1	0.00	0.00	0.00
7,900.0	90.21	90.00	6,699.4	-2,063.43	-45.2	619.6	620.1	0.00	0.00	0.00
8,000.0	90.21	90.00	6,699.1	-2,063.06	-45.2	719.6	720.1	0.00	0.00	0.00
8,100.0	90.21	90.00	6,698.7	-2,062.70	-45.2	819.6	820.1	0.00	0.00	0.00
8,200.0	90.21	90.00	6,698.3	-2,062.33	-45.2	919.6	920.1	0.00	0.00	0.00
8,300.0	90.21	90.00	6,698.0	-2,061.97	-45.2	1,019.6	1,020.1	0.00	0.00	0.00

Planning Report



Database:	EDM 5000.1 Single User Db	Local Co-ordinate Reference:	Well CECIL'S KERSEY FARM 17B-212
Company:	PDC ENERGY	TVD Reference:	KB-EST @ 4636.0usft (Original Well Elev)
Project:	WELD COUNTY, COLORADO	MD Reference:	KB-EST @ 4636.0usft (Original Well Elev)
Site:	NW SW SEC. 17 T5N R64W 6th P.M.	North Reference:	True
Well:	CECIL'S KERSEY FARM 17B-212	Survey Calculation Method:	Minimum Curvature
Wellbore:	ORIGINAL WELLBORE		
Design:	PROPOSAL #2		

Planned Survey

MD (usft)	Inc (°)	Azi (°)	TVD (usft)	SS (usft)	+N/-S (usft)	+E/-W (usft)	Vertical Section (usft)	Dogleg Rate (°/100usft)	Build Rate (°/100usft)	Turn Rate (°/100usft)
8,400.0	90.21	90.00	6,697.6	-2,061.60	-45.2	1,119.6	1,120.1	0.00	0.00	0.00
8,500.0	90.21	90.00	6,697.2	-2,061.23	-45.2	1,219.6	1,220.1	0.00	0.00	0.00
8,600.0	90.21	90.00	6,696.9	-2,060.86	-45.2	1,319.6	1,320.0	0.00	0.00	0.00
8,700.0	90.21	90.00	6,696.5	-2,060.49	-45.2	1,419.6	1,420.0	0.00	0.00	0.00
8,800.0	90.21	90.00	6,696.1	-2,060.13	-45.2	1,519.6	1,520.0	0.00	0.00	0.00
8,900.0	90.21	90.00	6,695.8	-2,059.76	-45.2	1,619.6	1,620.0	0.00	0.00	0.00
9,000.0	90.21	90.00	6,695.4	-2,059.39	-45.2	1,719.6	1,720.0	0.00	0.00	0.00
9,100.0	90.21	90.00	6,695.0	-2,059.02	-45.2	1,819.6	1,820.0	0.00	0.00	0.00
9,200.0	90.21	90.00	6,694.6	-2,058.65	-45.2	1,919.6	1,920.0	0.00	0.00	0.00
9,300.0	90.21	90.00	6,694.3	-2,058.28	-45.2	2,019.6	2,020.0	0.00	0.00	0.00
9,400.0	90.21	90.00	6,693.9	-2,057.90	-45.2	2,119.6	2,120.0	0.00	0.00	0.00
9,500.0	90.21	90.00	6,693.5	-2,057.53	-45.2	2,219.6	2,220.0	0.00	0.00	0.00
9,600.0	90.21	90.00	6,693.2	-2,057.16	-45.2	2,319.6	2,320.0	0.00	0.00	0.00
9,700.0	90.21	90.00	6,692.8	-2,056.79	-45.2	2,419.6	2,420.0	0.00	0.00	0.00
9,800.0	90.21	90.00	6,692.4	-2,056.41	-45.2	2,519.6	2,520.0	0.00	0.00	0.00
9,900.0	90.21	90.00	6,692.0	-2,056.04	-45.2	2,619.6	2,620.0	0.00	0.00	0.00
10,000.0	90.21	90.00	6,691.7	-2,055.67	-45.2	2,719.6	2,719.9	0.00	0.00	0.00
10,100.0	90.21	90.00	6,691.3	-2,055.29	-45.2	2,819.6	2,819.9	0.00	0.00	0.00
10,200.0	90.21	90.00	6,690.9	-2,054.92	-45.2	2,919.6	2,919.9	0.00	0.00	0.00
10,300.0	90.22	90.00	6,690.5	-2,054.54	-45.2	3,019.6	3,019.9	0.00	0.00	0.00
10,400.0	90.22	90.00	6,690.2	-2,054.17	-45.2	3,119.6	3,119.9	0.00	0.00	0.00
10,500.0	90.22	90.00	6,689.8	-2,053.79	-45.2	3,219.6	3,219.9	0.00	0.00	0.00
10,600.0	90.22	90.00	6,689.4	-2,053.41	-45.2	3,319.6	3,319.9	0.00	0.00	0.00
10,700.0	90.22	90.00	6,689.0	-2,053.04	-45.2	3,419.6	3,419.9	0.00	0.00	0.00
10,800.0	90.22	90.00	6,688.7	-2,052.66	-45.2	3,519.6	3,519.9	0.00	0.00	0.00
10,900.0	90.22	90.00	6,688.3	-2,052.28	-45.2	3,619.6	3,619.9	0.00	0.00	0.00
11,000.0	90.22	90.00	6,687.9	-2,051.91	-45.2	3,719.6	3,719.9	0.00	0.00	0.00
11,100.0	90.22	90.00	6,687.5	-2,051.53	-45.2	3,819.6	3,819.9	0.00	0.00	0.00
11,200.0	90.22	90.00	6,687.1	-2,051.15	-45.2	3,919.6	3,919.9	0.00	0.00	0.00
BHL - CECIL'S KERSEY FARM 17B-212 (P2)										
11,239.0	90.22	90.00	6,687.0	-2,051.00	-45.2	3,958.6	3,958.8	0.00	0.00	0.00

Formations

MD (usft)	TVD (usft)	Name	Lithology	Dip (°)	Dip Direction (°)
3,531.1	3,490.0	PARKMAN SANDSTONE			
4,257.0	4,200.0	SUSSEX SANDSTONE			
6,618.5	6,485.0	SHARON SPRINGS			
6,740.8	6,565.0	NIOBRARA A			
6,944.7	6,660.0	NIOBRARA B			

Planning Report



Database:	EDM 5000.1 Single User Db	Local Co-ordinate Reference:	Well CECIL'S KERSEY FARM 17B-212
Company:	PDC ENERGY	TVD Reference:	KB-EST @ 4636.0usft (Original Well Elev)
Project:	WELD COUNTY, COLORADO	MD Reference:	KB-EST @ 4636.0usft (Original Well Elev)
Site:	NW SW SEC. 17 T5N R64W 6th P.M.	North Reference:	True
Well:	CECIL'S KERSEY FARM 17B-212	Survey Calculation Method:	Minimum Curvature
Wellbore:	ORIGINAL WELLBORE		
Design:	PROPOSAL #2		

Plan Annotations

MD (usft)	TVD (usft)	Local Coordinates		Comment
		+N/-S (usft)	+E/-W (usft)	
1,250.0	1,250.0	0.0	0.0	START NUDGE (2°/100ft BUR)
1,849.8	1,845.4	-3.5	-62.5	EOB TO 12° INC
5,128.3	5,052.3	-41.7	-742.9	END OF TANGENT
5,728.2	5,647.8	-45.2	-805.4	EOD TO VERTICAL
6,066.2	5,985.8	-45.2	-805.4	KOP (8°/100ft BUR)
7,193.8	6,702.0	-45.2	-86.6	7" ICP *NEW* - CECIL'S KERSEY FARM 17B-212 (P2)
11,239.0	6,687.0	-45.2	3,958.6	BHL - CECIL'S KERSEY FARM 17B-212 (P2)