

KERR-MCGEE OIL & GAS ONSHORE LP (WA)

or COLORADO Slot: SLOT#40 JAGUAR 28C-14HZ
Field: WELD COUNTY (UTM/TRUE NORTH) Well: JAGUAR 28C-14HZ

Facility: SEC.23-T1N-R67W Wellbore: JAGUAR 28C-14HZ PWB

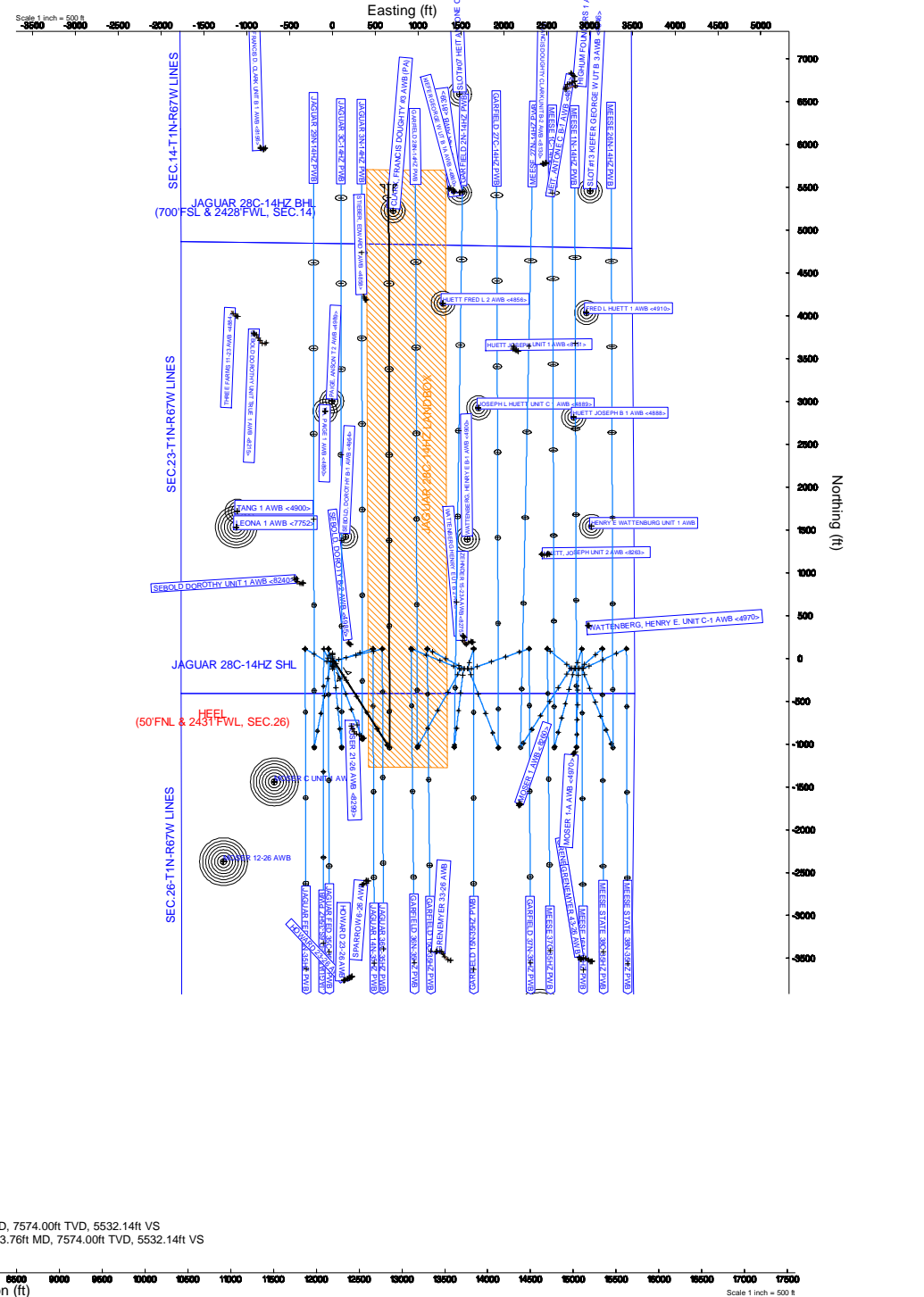
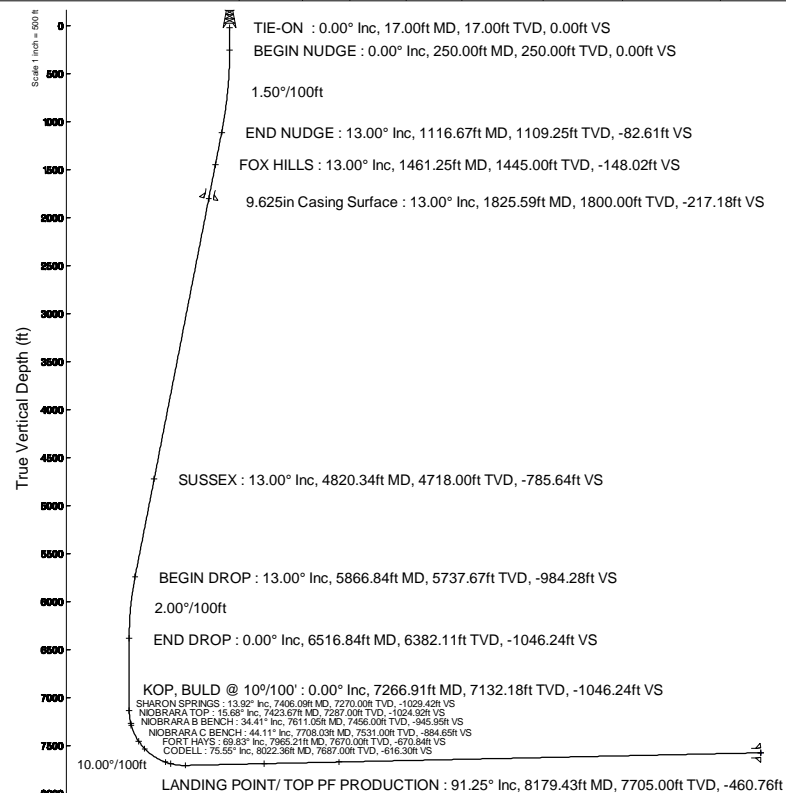
Plot reference wellpath is JAGUAR 28C-14HZ (PERMIT REV-1) PWP
True vertical depths are referenced to PERMIT (17KB) (RKB)
Measured depths are referenced to PERMIT (17KB) (RKB)
PERMIT (17KB) (RKB) to Mean Sea Level: 5009 feet
Mean Sea Level to Mud line (At Slot: SLOT#40 JAGUAR 28C-14HZ): 0 feet
Coordinates are in feet referenced to Slot

| Location Information | | | | | | | |
|--|--|-------------------|--|--------------------|--|-----------------|--|
| Facility Name | | Grid East (US ft) | | Grid North (US ft) | | Latitude | |
| SEC.23-T1N-R67W | | 1682294.967 | | 14541905.318 | | 40°02'29.645"N | |
| Slot | | Local N (ft) | | Local E (ft) | | Longitude | |
| LOT#40 JAGUAR 28C-14H | | -4036.35 | | -2967.01 | | 104°51'01.336"W | |
| PERMIT (17KB) (RKB) to Mud line (At Slot: SLOT#40 JAGUAR 28C-14HZ) | | 1679335.924 | | 14537865.607 | | 40°01'49.755"N | |
| Mean Sea Level to Mud line (At Slot: SLOT#40 JAGUAR 28C-14HZ) | | 5009ft | | 0ft | | 104°51'39.478"W | |
| PERMIT (17KB) (RKB) to Mean Sea Level | | 5009ft | | 0ft | | 0ft | |

| Survey Program | | | | | | | |
|----------------|--|-------------|--|---|--|---|--|
| Start MD (ft) | | End MD (ft) | | Tool | | Model | |
| 17.00 | | 8179.43 | | ISCWSA MWD, Rev. 2, axial magnetic correction | | Custom APC_ISCWSA REV 2 MWD+IFR1+SC (approximation) | |
| 8179.43 | | 14173.76 | | ISCWSA MWD, Rev. 2, axial magnetic correction | | Custom APC_ISCWSA REV 2 MWD+IFR1+SC (approximation) | |

| Targets | | | | | | | |
|-------------------------|----------|----------|--------------|--------------|-------------------|--------------------|-----------------|
| Name | MD (ft) | TVD (ft) | Local N (ft) | Local E (ft) | Grid East (US ft) | Grid North (US ft) | Latitude |
| JAGUAR 28C-14HZ LANDBOX | 5009.00 | 0.00 | 0.00 | 0.00 | 1679335.92 | 14537865.61 | 40°01'49.755"N |
| JAGUAR 28C-14HZ SHL | 5009.00 | 0.00 | 0.00 | 0.00 | 1679335.92 | 14537865.61 | 40°01'49.755"N |
| SEC.14-T1N-R67W LINES | 5009.00 | -118.04 | 2778.86 | 1682113.85 | 14537751.95 | 40°01'48.587"N | 104°51'03.755"W |
| SEC.23-T1N-R67W LINES | 5009.00 | -118.04 | 2778.86 | 1682113.85 | 14537751.95 | 40°01'48.587"N | 104°51'03.755"W |
| SEC.26-T1N-R67W LINES | 5009.00 | -118.04 | 2778.86 | 1682113.85 | 14537751.95 | 40°01'48.587"N | 104°51'03.755"W |
| SEC.35-T1N-R67W LINES | 5009.00 | -118.04 | 2778.86 | 1682113.85 | 14537751.95 | 40°01'48.587"N | 104°51'03.755"W |
| JAGUAR 28C-14HZ BHL | 14173.76 | 7574.00 | 5533.01 | 658.09 | 1679985.11 | 14543397.42 | 40°02'44.434"N |

| Well Profile Data | | | | | | | |
|----------------------------------|----------|---------|---------|----------|--------------|--------------|---------------|
| Design Comment | MD (ft) | Inc (°) | Az (°) | TVD (ft) | Local N (ft) | Local E (ft) | DLS (°/100ft) |
| TIE-ON | 17.00 | 0.00 | 147.471 | 17.00 | 0.00 | 0.00 | 0.00 |
| BEGIN NUDGE | 250.00 | 0.00 | 147.471 | 250.00 | 0.00 | 0.00 | 0.00 |
| END NUDGE | 1116.67 | 13.00 | 147.471 | 1109.25 | -82.54 | 52.64 | 1.50 |
| BEGIN DROP | 5866.84 | 13.00 | 147.471 | 5737.67 | -983.46 | 627.23 | 0.00 |
| END DROP | 6516.84 | 0.00 | 359.925 | 6382.11 | -1045.37 | 666.72 | 2.00 |
| KOP, BULD @ 10°/100' | 7266.91 | 0.00 | 359.925 | 7132.18 | -1045.37 | 666.72 | 0.00 |
| LANDING POINT/ TOP PF PRODUCTION | 8179.43 | 91.25 | 359.925 | 7705.00 | -459.89 | 665.95 | 10.00 |
| TOTAL DEPTH | 14173.76 | 91.25 | 359.925 | 7574.00 | 5533.01 | 658.09 | 0.00 |



| REFERENCE WELLPATH IDENTIFICATION | | | |
|-----------------------------------|--------------------------------------|----------|-------------------------|
| Operator | KERR-MCGEE OIL & GAS ONSHORE LP (WA) | Slot | SLOT#40 JAGUAR 28C-14HZ |
| Area | COLORADO | Well | JAGUAR 28C-14HZ |
| Field | WELD COUNTY (UTM/TRUE NORTH) | Wellbore | JAGUAR 28C-14HZ PWB |
| Facility | SEC.23-T1N-R67W | | |

| REPORT SETUP INFORMATION | | | |
|--------------------------|------------------------------------|----------------------|---|
| Projection System | NAD83 / UTM Zone 13 North, US feet | Software System | WellArchitect® 4.0.0 |
| North Reference | True | User | Amarcar |
| Scale | 0.999602 | Report Generated | 31/Jul/2015 at 11:03 |
| Convergence at slot | 0.09° East | Database/Source file | KERR MCGEE UTM/_JAGUAR_28C-14HZ_PWB.xml |

| WELLPATH LOCATION | | | | | | |
|-----------------------|-------------------|----------|------------------|-----------------|------------------------|-----------------|
| | Local coordinates | | Grid coordinates | | Geographic coordinates | |
| | North[ft] | East[ft] | Easting[US ft] | Northing[US ft] | Latitude | Longitude |
| Slot Location | -4036.35 | -2967.01 | 1679335.92 | 14537865.61 | 40°01'49.755"N | 104°51'39.478"W |
| Facility Reference Pt | | | 1682294.97 | 14541905.32 | 40°02'29.645"N | 104°51'01.336"W |
| Field Reference Pt | | | 1698235.31 | 14552047.82 | 40°04'09.600"N | 104°47'36.000"W |

| WELLPATH DATUM | | | |
|--------------------------|----------------------|--|-------------------|
| Calculation method | Minimum curvature | PERMIT (17'KB) (RKB) to Facility Vertical Datum | 5009.00ft |
| Horizontal Reference Pt | Slot | PERMIT (17'KB) (RKB) to Mean Sea Level | 5009.00ft |
| Vertical Reference Pt | PERMIT (17'KB) (RKB) | PERMIT (17'KB) (RKB) to Mud Line at Slot (SLOT#40 JAGUAR 28C-14HZ) | 5009.00ft |
| MD Reference Pt | PERMIT (17'KB) (RKB) | Section Origin | N 0.00, E 0.00 ft |
| Field Vertical Reference | Mean Sea Level | Section Azimuth | 359.93° |

| REFERENCE WELLPATH IDENTIFICATION | | | |
|-----------------------------------|--------------------------------------|----------|-------------------------|
| Operator | KERR-MCGEE OIL & GAS ONSHORE LP (WA) | Slot | SLOT#40 JAGUAR 28C-14HZ |
| Area | COLORADO | Well | JAGUAR 28C-14HZ |
| Field | WELD COUNTY (UTM/TRUE NORTH) | Wellbore | JAGUAR 28C-14HZ PWB |
| Facility | SEC.23-T1N-R67W | | |

| WELLPATH DATA (160 stations) † = interpolated/extrapolated station | | | | | | | | | | |
|--|-----------------|-------------|----------|----------------|------------|-----------|----------------|-----------------|---------------|-------------|
| MD [ft] | Inclination [°] | Azimuth [°] | TVD [ft] | Vert Sect [ft] | North [ft] | East [ft] | Latitude | Longitude | DLS [°/100ft] | Comments |
| 0.00† | 0.000 | 147.471 | 0.00 | 0.00 | 0.00 | 0.00 | 40°01'49.755"N | 104°51'39.478"W | 0.00 | |
| 17.00 | 0.000 | 147.471 | 17.00 | 0.00 | 0.00 | 0.00 | 40°01'49.755"N | 104°51'39.478"W | 0.00 | TIE-ON |
| 117.00† | 0.000 | 147.471 | 117.00 | 0.00 | 0.00 | 0.00 | 40°01'49.755"N | 104°51'39.478"W | 0.00 | |
| 217.00† | 0.000 | 147.471 | 217.00 | 0.00 | 0.00 | 0.00 | 40°01'49.755"N | 104°51'39.478"W | 0.00 | |
| 250.00 | 0.000 | 147.471 | 250.00 | 0.00 | 0.00 | 0.00 | 40°01'49.755"N | 104°51'39.478"W | 0.00 | BEGIN NUDGE |
| 317.00† | 1.005 | 147.471 | 317.00 | -0.50 | -0.50 | 0.32 | 40°01'49.750"N | 104°51'39.474"W | 1.50 | |
| 417.00† | 2.505 | 147.471 | 416.95 | -3.08 | -3.08 | 1.96 | 40°01'49.725"N | 104°51'39.453"W | 1.50 | |
| 517.00† | 4.005 | 147.471 | 516.78 | -7.87 | -7.86 | 5.02 | 40°01'49.677"N | 104°51'39.414"W | 1.50 | |
| 617.00† | 5.505 | 147.471 | 616.44 | -14.87 | -14.85 | 9.47 | 40°01'49.608"N | 104°51'39.356"W | 1.50 | |
| 717.00† | 7.005 | 147.471 | 715.84 | -24.06 | -24.04 | 15.33 | 40°01'49.517"N | 104°51'39.281"W | 1.50 | |
| 817.00† | 8.505 | 147.471 | 814.92 | -35.45 | -35.42 | 22.59 | 40°01'49.405"N | 104°51'39.188"W | 1.50 | |
| 917.00† | 10.005 | 147.471 | 913.62 | -49.02 | -48.98 | 31.24 | 40°01'49.271"N | 104°51'39.076"W | 1.50 | |
| 1017.00† | 11.505 | 147.471 | 1011.86 | -64.76 | -64.71 | 41.27 | 40°01'49.116"N | 104°51'38.947"W | 1.50 | |
| 1116.67 | 13.000 | 147.471 | 1109.25 | -82.61 | -82.54 | 52.64 | 40°01'48.939"N | 104°51'38.801"W | 1.50 | END NUDGE |
| 1117.00† | 13.000 | 147.471 | 1109.57 | -82.67 | -82.60 | 52.68 | 40°01'48.939"N | 104°51'38.801"W | 0.00 | |
| 1217.00† | 13.000 | 147.471 | 1207.01 | -101.65 | -101.57 | 64.78 | 40°01'48.751"N | 104°51'38.645"W | 0.00 | |
| 1317.00† | 13.000 | 147.471 | 1304.45 | -120.64 | -120.54 | 76.88 | 40°01'48.564"N | 104°51'38.490"W | 0.00 | |
| 1417.00† | 13.000 | 147.471 | 1401.89 | -139.62 | -139.50 | 88.97 | 40°01'48.376"N | 104°51'38.334"W | 0.00 | |
| 1461.25† | 13.000 | 147.471 | 1445.00 | -148.02 | -147.89 | 94.32 | 40°01'48.293"N | 104°51'38.265"W | 0.00 | FOX HILLS |
| 1517.00† | 13.000 | 147.471 | 1499.32 | -158.60 | -158.47 | 101.07 | 40°01'48.189"N | 104°51'38.179"W | 0.00 | |
| 1617.00† | 13.000 | 147.471 | 1596.76 | -177.58 | -177.43 | 113.16 | 40°01'48.002"N | 104°51'38.023"W | 0.00 | |
| 1717.00† | 13.000 | 147.471 | 1694.20 | -196.56 | -196.40 | 125.26 | 40°01'47.814"N | 104°51'37.868"W | 0.00 | |
| 1817.00† | 13.000 | 147.471 | 1791.63 | -215.55 | -215.37 | 137.36 | 40°01'47.627"N | 104°51'37.712"W | 0.00 | |
| 1917.00† | 13.000 | 147.471 | 1889.07 | -234.53 | -234.33 | 149.45 | 40°01'47.439"N | 104°51'37.557"W | 0.00 | |
| 2017.00† | 13.000 | 147.471 | 1986.51 | -253.51 | -253.30 | 161.55 | 40°01'47.252"N | 104°51'37.401"W | 0.00 | |
| 2117.00† | 13.000 | 147.471 | 2083.94 | -272.49 | -272.26 | 173.65 | 40°01'47.064"N | 104°51'37.246"W | 0.00 | |
| 2217.00† | 13.000 | 147.471 | 2181.38 | -291.47 | -291.23 | 185.74 | 40°01'46.877"N | 104°51'37.090"W | 0.00 | |
| 2317.00† | 13.000 | 147.471 | 2278.82 | -310.46 | -310.20 | 197.84 | 40°01'46.690"N | 104°51'36.935"W | 0.00 | |
| 2417.00† | 13.000 | 147.471 | 2376.26 | -329.44 | -329.16 | 209.93 | 40°01'46.502"N | 104°51'36.779"W | 0.00 | |
| 2517.00† | 13.000 | 147.471 | 2473.69 | -348.42 | -348.13 | 222.03 | 40°01'46.315"N | 104°51'36.624"W | 0.00 | |
| 2617.00† | 13.000 | 147.471 | 2571.13 | -367.40 | -367.09 | 234.13 | 40°01'46.127"N | 104°51'36.468"W | 0.00 | |
| 2717.00† | 13.000 | 147.471 | 2668.57 | -386.38 | -386.06 | 246.22 | 40°01'45.940"N | 104°51'36.313"W | 0.00 | |
| 2817.00† | 13.000 | 147.471 | 2766.00 | -405.36 | -405.03 | 258.32 | 40°01'45.752"N | 104°51'36.157"W | 0.00 | |
| 2917.00† | 13.000 | 147.471 | 2863.44 | -424.35 | -423.99 | 270.42 | 40°01'45.565"N | 104°51'36.002"W | 0.00 | |
| 3017.00† | 13.000 | 147.471 | 2960.88 | -443.33 | -442.96 | 282.51 | 40°01'45.378"N | 104°51'35.846"W | 0.00 | |
| 3117.00† | 13.000 | 147.471 | 3058.31 | -462.31 | -461.93 | 294.61 | 40°01'45.190"N | 104°51'35.691"W | 0.00 | |
| 3217.00† | 13.000 | 147.471 | 3155.75 | -481.29 | -480.89 | 306.70 | 40°01'45.003"N | 104°51'35.535"W | 0.00 | |
| 3317.00† | 13.000 | 147.471 | 3253.19 | -500.27 | -499.86 | 318.80 | 40°01'44.815"N | 104°51'35.380"W | 0.00 | |
| 3417.00† | 13.000 | 147.471 | 3350.63 | -519.26 | -518.82 | 330.90 | 40°01'44.628"N | 104°51'35.224"W | 0.00 | |
| 3517.00† | 13.000 | 147.471 | 3448.06 | -538.24 | -537.79 | 342.99 | 40°01'44.440"N | 104°51'35.069"W | 0.00 | |
| 3617.00† | 13.000 | 147.471 | 3545.50 | -557.22 | -556.76 | 355.09 | 40°01'44.253"N | 104°51'34.913"W | 0.00 | |
| 3717.00† | 13.000 | 147.471 | 3642.94 | -576.20 | -575.72 | 367.18 | 40°01'44.066"N | 104°51'34.758"W | 0.00 | |
| 3817.00† | 13.000 | 147.471 | 3740.37 | -595.18 | -594.69 | 379.28 | 40°01'43.878"N | 104°51'34.602"W | 0.00 | |
| 3917.00† | 13.000 | 147.471 | 3837.81 | -614.17 | -613.65 | 391.38 | 40°01'43.691"N | 104°51'34.447"W | 0.00 | |
| 4017.00† | 13.000 | 147.471 | 3935.25 | -633.15 | -632.62 | 403.47 | 40°01'43.503"N | 104°51'34.291"W | 0.00 | |

| REFERENCE WELLPATH IDENTIFICATION | | | |
|-----------------------------------|--------------------------------------|----------|-------------------------|
| Operator | KERR-MCGEE OIL & GAS ONSHORE LP (WA) | Slot | SLOT#40 JAGUAR 28C-14HZ |
| Area | COLORADO | Well | JAGUAR 28C-14HZ |
| Field | WELD COUNTY (UTM/TRUE NORTH) | Wellbore | JAGUAR 28C-14HZ PWB |
| Facility | SEC.23-T1N-R67W | | |

| WELLPATH DATA (160 stations) † = interpolated/extrapolated station | | | | | | | | | | |
|--|-----------------|-------------|----------|----------------|------------|-----------|----------------|-----------------|---------------|----------------------|
| MD [ft] | Inclination [°] | Azimuth [°] | TVD [ft] | Vert Sect [ft] | North [ft] | East [ft] | Latitude | Longitude | DLS [°/100ft] | Comments |
| 4117.00† | 13.000 | 147.471 | 4032.68 | -652.13 | -651.59 | 415.57 | 40°01'43.316"N | 104°51'34.136"W | 0.00 | |
| 4217.00† | 13.000 | 147.471 | 4130.12 | -671.11 | -670.55 | 427.67 | 40°01'43.128"N | 104°51'33.980"W | 0.00 | |
| 4317.00† | 13.000 | 147.471 | 4227.56 | -690.09 | -689.52 | 439.76 | 40°01'42.941"N | 104°51'33.825"W | 0.00 | |
| 4417.00† | 13.000 | 147.471 | 4325.00 | -709.07 | -708.48 | 451.86 | 40°01'42.754"N | 104°51'33.669"W | 0.00 | |
| 4517.00† | 13.000 | 147.471 | 4422.43 | -728.06 | -727.45 | 463.95 | 40°01'42.566"N | 104°51'33.514"W | 0.00 | |
| 4617.00† | 13.000 | 147.471 | 4519.87 | -747.04 | -746.42 | 476.05 | 40°01'42.379"N | 104°51'33.358"W | 0.00 | |
| 4717.00† | 13.000 | 147.471 | 4617.31 | -766.02 | -765.38 | 488.15 | 40°01'42.191"N | 104°51'33.203"W | 0.00 | |
| 4817.00† | 13.000 | 147.471 | 4714.74 | -785.00 | -784.35 | 500.24 | 40°01'42.004"N | 104°51'33.047"W | 0.00 | |
| 4820.34† | 13.000 | 147.471 | 4718.00 | -785.64 | -784.98 | 500.65 | 40°01'41.998"N | 104°51'33.042"W | 0.00 | SUSSEX |
| 4917.00† | 13.000 | 147.471 | 4812.18 | -803.98 | -803.31 | 512.34 | 40°01'41.816"N | 104°51'32.892"W | 0.00 | |
| 5017.00† | 13.000 | 147.471 | 4909.62 | -822.97 | -822.28 | 524.44 | 40°01'41.629"N | 104°51'32.736"W | 0.00 | |
| 5117.00† | 13.000 | 147.471 | 5007.05 | -841.95 | -841.25 | 536.53 | 40°01'41.442"N | 104°51'32.581"W | 0.00 | |
| 5217.00† | 13.000 | 147.471 | 5104.49 | -860.93 | -860.21 | 548.63 | 40°01'41.254"N | 104°51'32.425"W | 0.00 | |
| 5317.00† | 13.000 | 147.471 | 5201.93 | -879.91 | -879.18 | 560.72 | 40°01'41.067"N | 104°51'32.270"W | 0.00 | |
| 5417.00† | 13.000 | 147.471 | 5299.37 | -898.89 | -898.14 | 572.82 | 40°01'40.879"N | 104°51'32.114"W | 0.00 | |
| 5517.00† | 13.000 | 147.471 | 5396.80 | -917.88 | -917.11 | 584.92 | 40°01'40.692"N | 104°51'31.959"W | 0.00 | |
| 5617.00† | 13.000 | 147.471 | 5494.24 | -936.86 | -936.08 | 597.01 | 40°01'40.504"N | 104°51'31.803"W | 0.00 | |
| 5717.00† | 13.000 | 147.471 | 5591.68 | -955.84 | -955.04 | 609.11 | 40°01'40.317"N | 104°51'31.648"W | 0.00 | |
| 5817.00† | 13.000 | 147.471 | 5689.11 | -974.82 | -974.01 | 621.21 | 40°01'40.130"N | 104°51'31.492"W | 0.00 | |
| 5866.84 | 13.000 | 147.471 | 5737.67 | -984.28 | -983.46 | 627.23 | 40°01'40.036"N | 104°51'31.415"W | 0.00 | BEGIN DROP |
| 5917.00† | 11.997 | 147.471 | 5786.65 | -993.44 | -992.61 | 633.07 | 40°01'39.946"N | 104°51'31.340"W | 2.00 | |
| 6017.00† | 9.997 | 147.471 | 5884.81 | -1009.54 | -1008.70 | 643.33 | 40°01'39.787"N | 104°51'31.208"W | 2.00 | |
| 6117.00† | 7.997 | 147.471 | 5983.57 | -1022.73 | -1021.88 | 651.74 | 40°01'39.656"N | 104°51'31.100"W | 2.00 | |
| 6217.00† | 5.997 | 147.471 | 6082.82 | -1033.01 | -1032.15 | 658.29 | 40°01'39.555"N | 104°51'31.016"W | 2.00 | |
| 6317.00† | 3.997 | 147.471 | 6182.44 | -1040.36 | -1039.49 | 662.97 | 40°01'39.482"N | 104°51'30.956"W | 2.00 | |
| 6417.00† | 1.997 | 147.471 | 6282.29 | -1044.77 | -1043.90 | 665.78 | 40°01'39.439"N | 104°51'30.920"W | 2.00 | |
| 6516.84 | 0.000 | 359.925 | 6382.11 | -1046.24 | -1045.37 | 666.72 | 40°01'39.424"N | 104°51'30.907"W | 2.00 | END DROP |
| 6517.00† | 0.000 | 359.925 | 6382.27 | -1046.24 | -1045.37 | 666.72 | 40°01'39.424"N | 104°51'30.907"W | 0.00 | |
| 6617.00† | 0.000 | 359.925 | 6482.27 | -1046.24 | -1045.37 | 666.72 | 40°01'39.424"N | 104°51'30.907"W | 0.00 | |
| 6717.00† | 0.000 | 359.925 | 6582.27 | -1046.24 | -1045.37 | 666.72 | 40°01'39.424"N | 104°51'30.907"W | 0.00 | |
| 6817.00† | 0.000 | 359.925 | 6682.27 | -1046.24 | -1045.37 | 666.72 | 40°01'39.424"N | 104°51'30.907"W | 0.00 | |
| 6917.00† | 0.000 | 359.925 | 6782.27 | -1046.24 | -1045.37 | 666.72 | 40°01'39.424"N | 104°51'30.907"W | 0.00 | |
| 7017.00† | 0.000 | 359.925 | 6882.27 | -1046.24 | -1045.37 | 666.72 | 40°01'39.424"N | 104°51'30.907"W | 0.00 | |
| 7117.00† | 0.000 | 359.925 | 6982.27 | -1046.24 | -1045.37 | 666.72 | 40°01'39.424"N | 104°51'30.907"W | 0.00 | |
| 7217.00† | 0.000 | 359.925 | 7082.27 | -1046.24 | -1045.37 | 666.72 | 40°01'39.424"N | 104°51'30.907"W | 0.00 | |
| 7266.91 | 0.000 | 359.925 | 7132.18 | -1046.24 | -1045.37 | 666.72 | 40°01'39.424"N | 104°51'30.907"W | 0.00 | KOP, BULD @ 10°/100' |
| 7317.00† | 5.009 | 359.925 | 7182.21 | -1044.05 | -1043.18 | 666.71 | 40°01'39.446"N | 104°51'30.908"W | 10.00 | |
| 7406.09† | 13.919 | 359.925 | 7270.00 | -1029.42 | -1028.54 | 666.69 | 40°01'39.591"N | 104°51'30.908"W | 10.00 | SHARON SPRINGS |
| 7417.00† | 15.009 | 359.925 | 7280.56 | -1026.69 | -1025.82 | 666.69 | 40°01'39.617"N | 104°51'30.908"W | 10.00 | |
| 7423.67† | 15.677 | 359.925 | 7287.00 | -1024.92 | -1024.05 | 666.69 | 40°01'39.635"N | 104°51'30.908"W | 10.00 | NIOBRARA TOP |
| 7517.00† | 25.009 | 359.925 | 7374.41 | -992.52 | -991.64 | 666.65 | 40°01'39.955"N | 104°51'30.908"W | 10.00 | |
| 7611.05† | 34.414 | 359.925 | 7456.00 | -945.95 | -945.08 | 666.58 | 40°01'40.415"N | 104°51'30.909"W | 10.00 | NIOBRARA B BENCH |
| 7617.00† | 35.009 | 359.925 | 7460.89 | -942.57 | -941.69 | 666.58 | 40°01'40.449"N | 104°51'30.909"W | 10.00 | |
| 7708.03† | 44.113 | 359.925 | 7531.00 | -884.65 | -883.78 | 666.50 | 40°01'41.021"N | 104°51'30.910"W | 10.00 | NIOBRARA C BENCH |
| 7717.00† | 45.009 | 359.925 | 7537.39 | -878.36 | -877.48 | 666.50 | 40°01'41.083"N | 104°51'30.910"W | 10.00 | |



Planned Wellpath Report

JAGUAR 28C-14HZ (PERMIT REV-1) PWP

Page 4 of 7



| REFERENCE WELLPATH IDENTIFICATION | | | |
|-----------------------------------|--------------------------------------|----------|-------------------------|
| Operator | KERR-MCGEE OIL & GAS ONSHORE LP (WA) | Slot | SLOT#40 JAGUAR 28C-14HZ |
| Area | COLORADO | Well | JAGUAR 28C-14HZ |
| Field | WELD COUNTY (UTM/TRUE NORTH) | Wellbore | JAGUAR 28C-14HZ PWB |
| Facility | SEC.23-T1N-R67W | | |

| WELLPATH DATA (160 stations) † = interpolated/extrapolated station | | | | | | | | | | |
|--|--------------------|----------------|-------------|-------------------|---------------|--------------|----------------|-----------------|------------------|----------------------------------|
| MD [ft] | Inclination [°] | Azimuth [°] | TVD [ft] | Vert Sect [ft] | North [ft] | East [ft] | Latitude | Longitude | DLS [°/100ft] | Comments |
| 7817.00† | 55.009 | 359.925 | 7601.57 | -801.84 | -800.97 | 666.40 | 40°01'41.840"N | 104°51'30.912"W | 10.00 | |
| 7917.00† | 65.009 | 359.925 | 7651.50 | -715.34 | -714.47 | 666.28 | 40°01'42.694"N | 104°51'30.913"W | 10.00 | |
| 7965.21† | 69.830 | 359.925 | 7670.00 | -670.84 | -669.97 | 666.22 | 40°01'43.134"N | 104°51'30.914"W | 10.00 | FORT HAYS |
| 8017.00† | 75.009 | 359.925 | 7685.64 | -621.48 | -620.61 | 666.16 | 40°01'43.622"N | 104°51'30.915"W | 10.00 | |
| 8022.36† | 75.545 | 359.925 | 7687.00 | -616.30 | -615.43 | 666.15 | 40°01'43.673"N | 104°51'30.915"W | 10.00 | CODELL |
| 8117.00† | 85.009 | 359.925 | 7702.96 | -523.12 | -522.25 | 666.03 | 40°01'44.594"N | 104°51'30.916"W | 10.00 | |
| 8179.43 | 91.252 | 359.925 | 7705.00 | -460.76 | -459.89 | 665.95 | 40°01'45.210"N | 104°51'30.917"W | 10.00 | LANDING POINT/ TOP PF PRODUCTION |
| 8217.00† | 91.252 | 359.925 | 7704.18 | -423.20 | -422.32 | 665.90 | 40°01'45.581"N | 104°51'30.918"W | 0.00 | |
| 8317.00† | 91.252 | 359.925 | 7701.99 | -323.22 | -322.35 | 665.77 | 40°01'46.569"N | 104°51'30.919"W | 0.00 | |
| 8417.00† | 91.252 | 359.925 | 7699.81 | -223.24 | -222.37 | 665.64 | 40°01'47.557"N | 104°51'30.921"W | 0.00 | |
| 8517.00† | 91.252 | 359.925 | 7697.62 | -123.27 | -122.40 | 665.51 | 40°01'48.545"N | 104°51'30.923"W | 0.00 | |
| 8617.00† | 91.252 | 359.925 | 7695.44 | -23.29 | -22.42 | 665.37 | 40°01'49.533"N | 104°51'30.924"W | 0.00 | |
| 8717.00† | 91.252 | 359.925 | 7693.25 | 76.69 | 77.56 | 665.24 | 40°01'50.521"N | 104°51'30.926"W | 0.00 | |
| 8817.00† | 91.252 | 359.925 | 7691.07 | 176.66 | 177.53 | 665.11 | 40°01'51.509"N | 104°51'30.928"W | 0.00 | |
| 8917.00† | 91.252 | 359.925 | 7688.88 | 276.64 | 277.51 | 664.98 | 40°01'52.497"N | 104°51'30.929"W | 0.00 | |
| 9003.08† | 91.252 | 359.925 | 7687.00 | 362.69 | 363.56 | 664.87 | 40°01'53.348"N | 104°51'30.931"W | 0.00 | CODELL |
| 9017.00† | 91.252 | 359.925 | 7686.70 | 376.61 | 377.48 | 664.85 | 40°01'53.485"N | 104°51'30.931"W | 0.00 | |
| 9117.00† | 91.252 | 359.925 | 7684.51 | 476.59 | 477.46 | 664.72 | 40°01'54.473"N | 104°51'30.933"W | 0.00 | |
| 9217.00† | 91.252 | 359.925 | 7682.32 | 576.57 | 577.44 | 664.59 | 40°01'55.461"N | 104°51'30.934"W | 0.00 | |
| 9317.00† | 91.252 | 359.925 | 7680.14 | 676.54 | 677.41 | 664.46 | 40°01'56.449"N | 104°51'30.936"W | 0.00 | |
| 9417.00† | 91.252 | 359.925 | 7677.95 | 776.52 | 777.39 | 664.33 | 40°01'57.437"N | 104°51'30.938"W | 0.00 | |
| 9517.00† | 91.252 | 359.925 | 7675.77 | 876.49 | 877.36 | 664.19 | 40°01'58.425"N | 104°51'30.939"W | 0.00 | |
| 9617.00† | 91.252 | 359.925 | 7673.58 | 976.47 | 977.34 | 664.06 | 40°01'59.413"N | 104°51'30.941"W | 0.00 | |
| 9717.00† | 91.252 | 359.925 | 7671.40 | 1076.45 | 1077.32 | 663.93 | 40°02'00.401"N | 104°51'30.943"W | 0.00 | |
| 9780.97† | 91.252 | 359.925 | 7670.00 | 1140.40 | 1141.27 | 663.85 | 40°02'01.033"N | 104°51'30.944"W | 0.00 | FORT HAYS |
| 9817.00† | 91.252 | 359.925 | 7669.21 | 1176.42 | 1177.29 | 663.80 | 40°02'01.389"N | 104°51'30.944"W | 0.00 | |
| 9917.00† | 91.252 | 359.925 | 7667.03 | 1276.40 | 1277.27 | 663.67 | 40°02'02.377"N | 104°51'30.946"W | 0.00 | |
| 10017.00† | 91.252 | 359.925 | 7664.84 | 1376.37 | 1377.24 | 663.54 | 40°02'03.365"N | 104°51'30.948"W | 0.00 | |
| 10117.00† | 91.252 | 359.925 | 7662.66 | 1476.35 | 1477.22 | 663.41 | 40°02'04.353"N | 104°51'30.949"W | 0.00 | |
| 10217.00† | 91.252 | 359.925 | 7660.47 | 1576.33 | 1577.20 | 663.28 | 40°02'05.341"N | 104°51'30.951"W | 0.00 | |
| 10317.00† | 91.252 | 359.925 | 7658.29 | 1676.30 | 1677.17 | 663.14 | 40°02'06.329"N | 104°51'30.952"W | 0.00 | |
| 10417.00† | 91.252 | 359.925 | 7656.10 | 1776.28 | 1777.15 | 663.01 | 40°02'07.317"N | 104°51'30.954"W | 0.00 | |
| 10517.00† | 91.252 | 359.925 | 7653.91 | 1876.26 | 1877.12 | 662.88 | 40°02'08.305"N | 104°51'30.956"W | 0.00 | |
| 10617.00† | 91.252 | 359.925 | 7651.73 | 1976.23 | 1977.10 | 662.75 | 40°02'09.293"N | 104°51'30.957"W | 0.00 | |
| 10717.00† | 91.252 | 359.925 | 7649.54 | 2076.21 | 2077.08 | 662.62 | 40°02'10.281"N | 104°51'30.959"W | 0.00 | |
| 10817.00† | 91.252 | 359.925 | 7647.36 | 2176.18 | 2177.05 | 662.49 | 40°02'11.269"N | 104°51'30.961"W | 0.00 | |
| 10917.00† | 91.252 | 359.925 | 7645.17 | 2276.16 | 2277.03 | 662.36 | 40°02'12.257"N | 104°51'30.962"W | 0.00 | |
| 11017.00† | 91.252 | 359.925 | 7642.99 | 2376.14 | 2377.00 | 662.23 | 40°02'13.245"N | 104°51'30.964"W | 0.00 | |
| 11117.00† | 91.252 | 359.925 | 7640.80 | 2476.11 | 2476.98 | 662.10 | 40°02'14.233"N | 104°51'30.966"W | 0.00 | |
| 11217.00† | 91.252 | 359.925 | 7638.62 | 2576.09 | 2576.96 | 661.96 | 40°02'15.221"N | 104°51'30.967"W | 0.00 | |
| 11317.00† | 91.252 | 359.925 | 7636.43 | 2676.06 | 2676.93 | 661.83 | 40°02'16.209"N | 104°51'30.969"W | 0.00 | |
| 11417.00† | 91.252 | 359.925 | 7634.25 | 2776.04 | 2776.91 | 661.70 | 40°02'17.197"N | 104°51'30.971"W | 0.00 | |
| 11517.00† | 91.252 | 359.925 | 7632.06 | 2876.02 | 2876.88 | 661.57 | 40°02'18.185"N | 104°51'30.972"W | 0.00 | |
| 11617.00† | 91.252 | 359.925 | 7629.88 | 2975.99 | 2976.86 | 661.44 | 40°02'19.173"N | 104°51'30.974"W | 0.00 | |
| 11717.00† | 91.252 | 359.925 | 7627.69 | 3075.97 | 3076.84 | 661.31 | 40°02'20.161"N | 104°51'30.976"W | 0.00 | |

REFERENCE WELLPATH IDENTIFICATION

| | | | |
|----------|--------------------------------------|----------|-------------------------|
| Operator | KERR-MCGEE OIL & GAS ONSHORE LP (WA) | Slot | SLOT#40 JAGUAR 28C-14HZ |
| Area | COLORADO | Well | JAGUAR 28C-14HZ |
| Field | WELD COUNTY (UTM/TRUE NORTH) | Wellbore | JAGUAR 28C-14HZ PWB |
| Facility | SEC.23-T1N-R67W | | |

WELLPATH DATA (160 stations) † = interpolated/extrapolated station

| MD [ft] | Inclination [°] | Azimuth [°] | TVD [ft] | Vert Sect [ft] | North [ft] | East [ft] | Latitude | Longitude | DLS [°/100ft] | Comments |
|-----------|-----------------|-------------|----------------------|----------------|------------|-----------|----------------|-----------------|---------------|-------------|
| 11817.00† | 91.252 | 359.925 | 7625.50 | 3175.94 | 3176.81 | 661.18 | 40°02'21.149"N | 104°51'30.977"W | 0.00 | |
| 11917.00† | 91.252 | 359.925 | 7623.32 | 3275.92 | 3276.79 | 661.05 | 40°02'22.137"N | 104°51'30.979"W | 0.00 | |
| 12017.00† | 91.252 | 359.925 | 7621.13 | 3375.90 | 3376.77 | 660.92 | 40°02'23.125"N | 104°51'30.981"W | 0.00 | |
| 12117.00† | 91.252 | 359.925 | 7618.95 | 3475.87 | 3476.74 | 660.78 | 40°02'24.113"N | 104°51'30.982"W | 0.00 | |
| 12217.00† | 91.252 | 359.925 | 7616.76 | 3575.85 | 3576.72 | 660.65 | 40°02'25.101"N | 104°51'30.984"W | 0.00 | |
| 12317.00† | 91.252 | 359.925 | 7614.58 | 3675.83 | 3676.69 | 660.52 | 40°02'26.089"N | 104°51'30.985"W | 0.00 | |
| 12417.00† | 91.252 | 359.925 | 7612.39 | 3775.80 | 3776.67 | 660.39 | 40°02'27.077"N | 104°51'30.987"W | 0.00 | |
| 12517.00† | 91.252 | 359.925 | 7610.21 | 3875.78 | 3876.65 | 660.26 | 40°02'28.065"N | 104°51'30.989"W | 0.00 | |
| 12617.00† | 91.252 | 359.925 | 7608.02 | 3975.75 | 3976.62 | 660.13 | 40°02'29.053"N | 104°51'30.990"W | 0.00 | |
| 12717.00† | 91.252 | 359.925 | 7605.84 | 4075.73 | 4076.60 | 660.00 | 40°02'30.041"N | 104°51'30.992"W | 0.00 | |
| 12817.00† | 91.252 | 359.925 | 7603.65 | 4175.71 | 4176.57 | 659.87 | 40°02'31.029"N | 104°51'30.994"W | 0.00 | |
| 12917.00† | 91.252 | 359.925 | 7601.47 | 4275.68 | 4276.55 | 659.74 | 40°02'32.017"N | 104°51'30.995"W | 0.00 | |
| 13017.00† | 91.252 | 359.925 | 7599.28 | 4375.66 | 4376.53 | 659.60 | 40°02'33.005"N | 104°51'30.997"W | 0.00 | |
| 13117.00† | 91.252 | 359.925 | 7597.09 | 4475.63 | 4476.50 | 659.47 | 40°02'33.993"N | 104°51'30.999"W | 0.00 | |
| 13217.00† | 91.252 | 359.925 | 7594.91 | 4575.61 | 4576.48 | 659.34 | 40°02'34.981"N | 104°51'31.000"W | 0.00 | |
| 13317.00† | 91.252 | 359.925 | 7592.72 | 4675.59 | 4676.45 | 659.21 | 40°02'35.969"N | 104°51'31.002"W | 0.00 | |
| 13417.00† | 91.252 | 359.925 | 7590.54 | 4775.56 | 4776.43 | 659.08 | 40°02'36.957"N | 104°51'31.004"W | 0.00 | |
| 13517.00† | 91.252 | 359.925 | 7588.35 | 4875.54 | 4876.41 | 658.95 | 40°02'37.945"N | 104°51'31.005"W | 0.00 | |
| 13617.00† | 91.252 | 359.925 | 7586.17 | 4975.51 | 4976.38 | 658.82 | 40°02'38.933"N | 104°51'31.007"W | 0.00 | |
| 13717.00† | 91.252 | 359.925 | 7583.98 | 5075.49 | 5076.36 | 658.69 | 40°02'39.921"N | 104°51'31.009"W | 0.00 | |
| 13817.00† | 91.252 | 359.925 | 7581.80 | 5175.47 | 5176.33 | 658.56 | 40°02'40.909"N | 104°51'31.010"W | 0.00 | |
| 13917.00† | 91.252 | 359.925 | 7579.61 | 5275.44 | 5276.31 | 658.42 | 40°02'41.897"N | 104°51'31.012"W | 0.00 | |
| 14017.00† | 91.252 | 359.925 | 7577.43 | 5375.42 | 5376.29 | 658.29 | 40°02'42.885"N | 104°51'31.014"W | 0.00 | |
| 14117.00† | 91.252 | 359.925 | 7575.24 | 5475.40 | 5476.26 | 658.16 | 40°02'43.873"N | 104°51'31.015"W | 0.00 | |
| 14173.76 | 91.252 | 359.925 | 7574.00 [†] | 5532.14 | 5533.01 | 658.09 | 40°02'44.434"N | 104°51'31.016"W | 0.00 | TOTAL DEPTH |

HOLE & CASING SECTIONS - Ref Wellbore: JAGUAR 28C-14HZ PWB Ref Wellpath: JAGUAR 28C-14HZ (PERMIT REV-1) PWP

| String/Diameter | Start MD [ft] | End MD [ft] | Interval [ft] | Start TVD [ft] | End TVD [ft] | Start N/S [ft] | Start E/W [ft] | End N/S [ft] | End E/W [ft] |
|-------------------------|---------------|-------------|---------------|----------------|--------------|----------------|----------------|--------------|--------------|
| 13.5in Open Hole | 17.00 | 1825.59 | 1808.59 | 17.00 | 1800.00 | 0.00 | 0.00 | -216.99 | 138.40 |
| 9.625in Casing Surface | 17.00 | 1825.59 | 1808.59 | 17.00 | 1800.00 | 0.00 | 0.00 | -216.99 | 138.40 |
| 7.875in Open Hole | 1825.59 | 14173.76 | 12348.17 | 1800.00 | 7574.00 | -216.99 | 138.40 | 5533.01 | 658.09 |
| 5.5in Casing Production | 17.00 | 14173.76 | 14156.76 | 17.00 | 7574.00 | 0.00 | 0.00 | 5533.00 | 658.09 |

| REFERENCE WELLPATH IDENTIFICATION | | | |
|-----------------------------------|--------------------------------------|----------|-------------------------|
| Operator | KERR-MCGEE OIL & GAS ONSHORE LP (WA) | Slot | SLOT#40 JAGUAR 28C-14HZ |
| Area | COLORADO | Well | JAGUAR 28C-14HZ |
| Field | WELD COUNTY (UTM/TRUE NORTH) | Wellbore | JAGUAR 28C-14HZ PWB |
| Facility | SEC.23-T1N-R67W | | |

| TARGETS | | | | | | | | | |
|-------------------------|----------|----------|------------|-----------|-------------------|--------------------|----------------|-----------------|---------|
| Name | MD [ft] | TVD [ft] | North [ft] | East [ft] | Grid East [US ft] | Grid North [US ft] | Latitude | Longitude | Shape |
| JAGUAR 28C-14HZ LANDBOX | | 5009.00 | 0.00 | 0.00 | 1679335.92 | 14537865.61 | 40°01'49.755"N | 104°51'39.478"W | polygon |
| JAGUAR 28C-14HZ SHL | | 5009.00 | 0.00 | 0.00 | 1679335.92 | 14537865.61 | 40°01'49.755"N | 104°51'39.478"W | point |
| SEC.14-T1N-R67W LINES | | 5009.00 | -118.04 | 2778.86 | 1682113.85 | 14537751.95 | 40°01'48.587"N | 104°51'03.755"W | polygon |
| SEC.23-T1N-R67W LINES | | 5009.00 | -118.04 | 2778.86 | 1682113.85 | 14537751.95 | 40°01'48.587"N | 104°51'03.755"W | polygon |
| SEC.26-T1N-R67W LINES | | 5009.00 | -118.04 | 2778.86 | 1682113.85 | 14537751.95 | 40°01'48.587"N | 104°51'03.755"W | polygon |
| SEC.35-T1N-R67W LINES | | 5009.00 | -118.04 | 2778.86 | 1682113.85 | 14537751.95 | 40°01'48.587"N | 104°51'03.755"W | polygon |
| 1) JAGUAR 28C-14HZ BHL | 14173.76 | 7574.00 | 5533.01 | 658.09 | 1679985.11 | 14543397.42 | 40°02'44.434"N | 104°51'31.016"W | point |

| SURVEY PROGRAM - Ref Wellbore: JAGUAR 28C-14HZ PWB Ref Wellpath: JAGUAR 28C-14HZ (PERMIT REV-1) PWP | | | | |
|---|-------------|---|------------------|---------------------|
| Start MD [ft] | End MD [ft] | Positional Uncertainty Model | Log Name/Comment | Wellbore |
| 17.00 | 8179.43 | Custom APC_ISCWSA REV 2 MWD+IFR1+SC (approximation) | | JAGUAR 28C-14HZ PWB |
| 8179.43 | 14173.76 | Custom APC_ISCWSA REV 2 MWD+IFR1+SC (approximation) | | JAGUAR 28C-14HZ PWB |

REFERENCE WELLPATH IDENTIFICATION

| | | | |
|----------|--------------------------------------|----------|-------------------------|
| Operator | KERR-MCGEE OIL & GAS ONSHORE LP (WA) | Slot | SLOT#40 JAGUAR 28C-14HZ |
| Area | COLORADO | Well | JAGUAR 28C-14HZ |
| Field | WELD COUNTY (UTM/TRUE NORTH) | Wellbore | JAGUAR 28C-14HZ PWB |
| Facility | SEC.23-T1N-R67W | | |

WELLPATH COMMENTS

| MD [ft] | Inclination [°] | Azimuth [°] | TVD [ft] | Comment |
|------------|--------------------|----------------|-------------|------------------|
| 1461.25 | 13.000 | 147.471 | 1445.00 | FOX HILLS |
| 4820.34 | 13.000 | 147.471 | 4718.00 | SUSSEX |
| 7406.09 | 13.919 | 359.925 | 7270.00 | SHARON SPRINGS |
| 7423.67 | 15.677 | 359.925 | 7287.00 | NIOBRARA TOP |
| 7611.05 | 34.414 | 359.925 | 7456.00 | NIOBRARA B BENCH |
| 7708.03 | 44.113 | 359.925 | 7531.00 | NIOBRARA C BENCH |
| 7965.21 | 69.830 | 359.925 | 7670.00 | FORT HAYS |
| 8022.36 | 75.545 | 359.925 | 7687.00 | CODELL |
| 9003.08 | 91.252 | 359.925 | 7687.00 | CODELL |
| 9780.97 | 91.252 | 359.925 | 7670.00 | FORT HAYS |

DESIGN COMMENTS

| MD [ft] | Inclination [°] | Azimuth [°] | TVD [ft] | Comment |
|------------|--------------------|----------------|-------------|----------------------------------|
| 17.00 | 0.000 | 147.471 | 17.00 | TIE-ON |
| 250.00 | 0.000 | 147.471 | 250.00 | BEGIN NUDGE |
| 1116.67 | 13.000 | 147.471 | 1109.25 | END NUDGE |
| 5866.84 | 13.000 | 147.471 | 5737.67 | BEGIN DROP |
| 6516.84 | 0.000 | 359.925 | 6382.11 | END DROP |
| 7266.91 | 0.000 | 359.925 | 7132.18 | KOP, BULD @ 10°/100' |
| 8179.43 | 91.252 | 359.925 | 7705.00 | LANDING POINT/ TOP PF PRODUCTION |
| 14173.76 | 91.252 | 359.925 | 7574.00 | TOTAL DEPTH |