



# Kerr-McGee Oil & Gas Onshore LP

A subsidiary of Anadarko Petroleum Corporation

1099 18<sup>th</sup> Street  
Denver, CO 80202  
720-929-6000

November 2, 2015

Matt Lepore  
Director, Colorado Oil and Gas Conservation Commission  
Department of Natural Resources  
The Chancery Building  
1120 Lincoln Street, Suite 801  
Denver, CO 80203

Re: **30 Day Certification Letter - 318A.e**  
JAGUAR 3N-14HZ (Doc # 400929146)  
Township 1 North, Range 67 West  
Section 23: SESW  
Unit Acreage: 240  
Unit Spacing: SEC 14: SESW  
SEC 23: E2W2  
SEC 26: NENW  
Weld County, Colorado

Dear Director Lepore:

Kerr McGee Oil and Gas Onshore LP ("KMG") hereby certifies that KMG owns one hundred percent (100%) of the leasehold interest in the mineral rights in the proposed spacing unit. KMG hereby respectfully requests approval of this boundary well.

If you have any questions or issues regarding this permit, please contact Cheryl Light at (720) 929-6461.

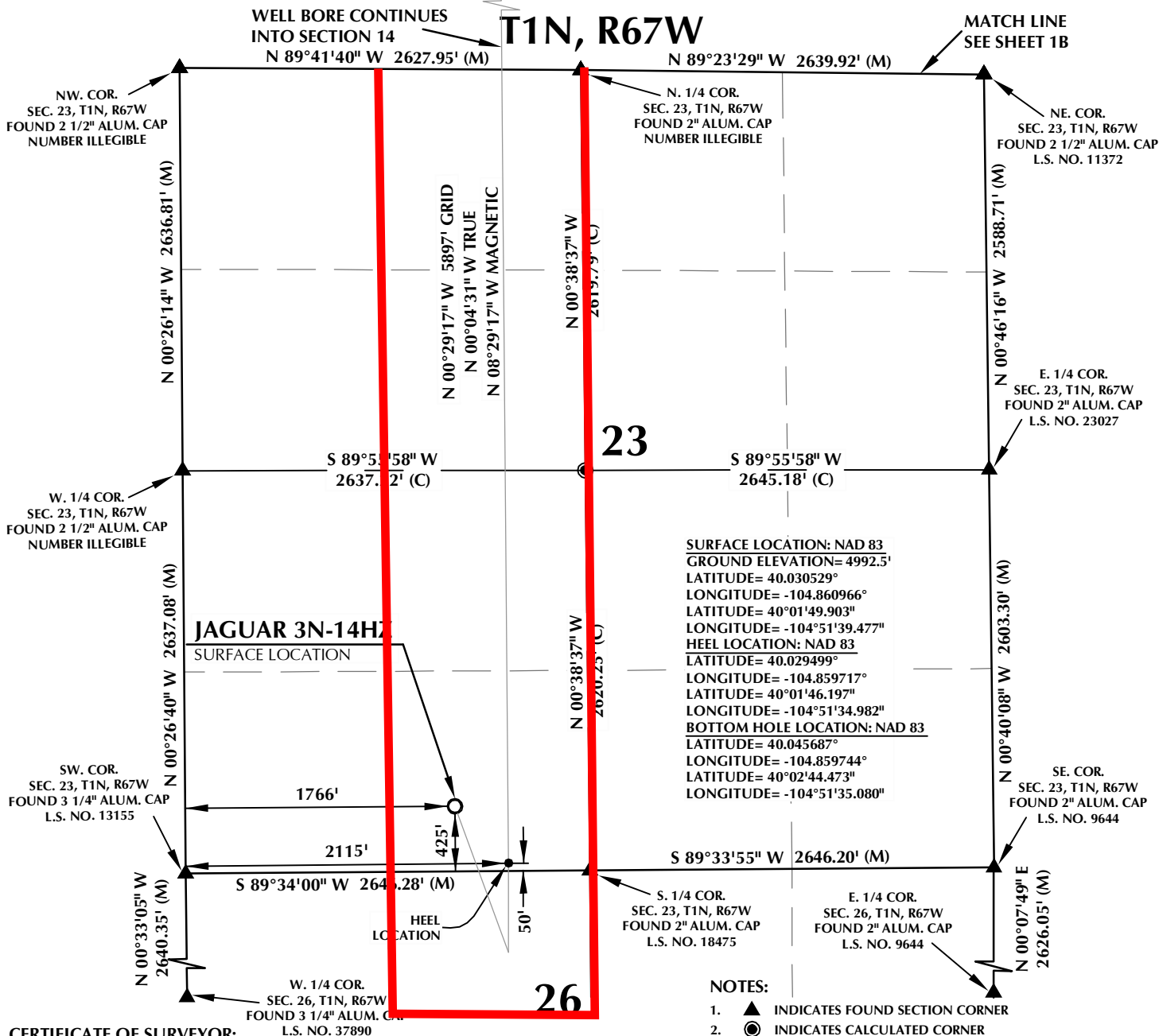
Very truly yours,

**Kerr-McGee Oil and Gas Onshore LP**

A blue ink signature of Craig Richardson, consisting of a stylized 'C' followed by a horizontal line.

Craig Richardson  
Regulatory Analyst II

Enclosure



**WELL PAD - JAGUAR 36C-35HZ**

**JAGUAR 3N-14HZ**  
WELL LOCATION CERTIFICATE  
425' FSL & 1766' FWL SESW (SURFACE)  
50' FSL & 2115' FWL SESW (HEEL)  
LOCATED IN SECTION 23  
700' FSL & 2112' FWL SESW (BOTTOM)  
LOCATED IN SECTION 14  
T1N, R67W, 6TH P.M.  
WELD COUNTY, COLORADO

**Kerr-McGee Oil &  
Gas Onshore L.P.**  
1099 18th Street  
Denver, Colorado 80202



**CONSULTING, LLC**

**SHERIDAN OFFICE**  
1095 Saberton Avenue  
Sheridan, Wyoming 82801  
Phone 307-674-0609

**LOVELAND OFFICE**  
1635 Foxtrail Drive, Suite 204  
Loveland, Colorado 80538  
Phone 970-776-4331

DRAFTED BY:	LMO	CHECKED BY:	BJR	SHEET NO:
DATE DRAFTED:	8/17/15	DATE SURVEYED:	5/7/15	<b>1A</b>
REVISED:		FILE NAME:	15-42	1A OF 1

## C:\ANADARKO\2015\2015\_42\_FLIP\_FLOP\_MEESE\_T1N\_R67W\_23\PLATS\JAGUAR\JAGUAR PLATS.dwg, 8/12/2015 5:34:41 PM, lisa