

1801 Broadway
Suite 500
Denver, Colorado 80202



Allison Linz
Regulatory Technician
Tel: 303.398.0355
E-mail:
regulatorypermitting@gwogco.com

November 18, 2015

Colorado Oil and Gas Conservation Commission
1120 Lincoln Street, Suite 801
Denver, Colorado 80203

RE: **Proposed Wellbore Spacing Unit**
Kodak North FD 28-122HC

Codell New Drill
Township 6 North, Range 67 West, 6th P.M.
SE/W Section 26
Weld County, Colorado

Dear Director:

Great Western Operating Company, LLC is planning to drill the above captioned well in accordance with the provisions of COGCC Rule 318A.e.

Great Western proposed wellbore spacing unit consists of:

- **Section 26: NW/4**
Section 27: N/2
Section 28: E/2NE/4
- **560 Acres**

The 30 day notification time period has passed and we have not received any objections to such well locations or proposed spacing unit, therefore Great Western hereby requests the Director to approve the above mentioned well. Great Western Operating Company, LLC respectfully requests that the COGCC review the enclosed map illustrating the proposed wellbore spacing unit.

Respectfully,

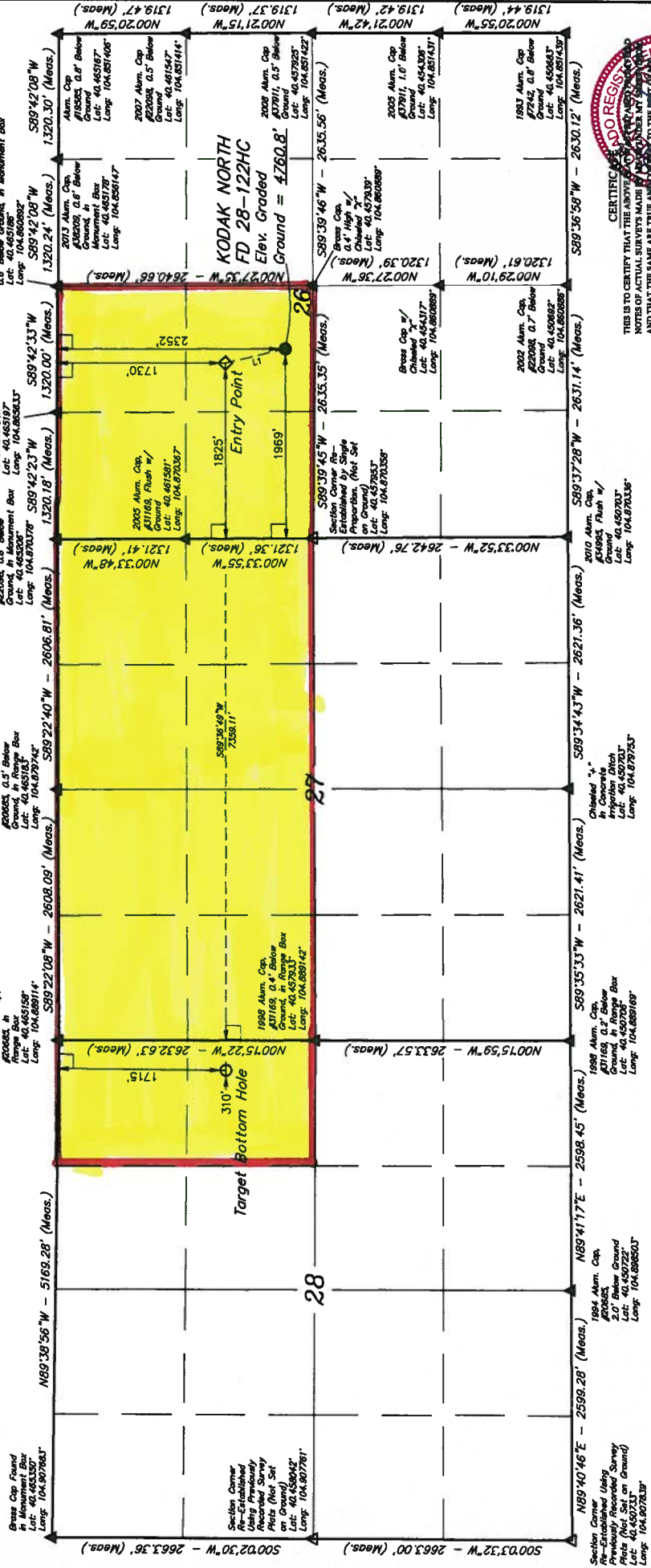
Allison Linz

Allison Linz
Regulatory Technician
Great Western Operating Company, LLC

T6N, R67W, 6th P.M.

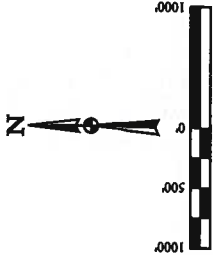
GREAT WESTERN OPERATING COMPANY
KODAK NORTH FD 28-122HC
SE 1/4 NW 1/4 SECTION 26, T6N, R67W, 6th P.M.
WELD COUNTY, COLORADO

BASES OF BEARINGS IS A G.F.S. OBSERVATION
BASES OF ELEVATION
USGS COOPERATIVE BASE NETWORK CONTROL STATION,
DESIGNATION 'VERMILYEA', NGS DATA SHEET LISTS THE
NAVD 88 ELEVATION AS BEING 5026 FEET



LINE TABLE

LINE	DIRECTION	LENGTH
L1	N13°34'44"W	639.56'



- LEGEND:**
- 8" SYMBOL
 - PROPOSED WELLHEAD.
 - ENTRY POINT.
 - ◇ TARGET BOTTOM HOLE.
 - △ SECTION CORNERS LOCATED. (NAD 83)
 - ▽ SECTION CORNERS RE-ESTABLISHED. (Not Set on Ground.) (NAD 83)



CERTIFICATE TO REGISTER THIS SURVEY TO THE PUBLIC RECORDS AND THAT THE SAME ARE TRUE AND CORRECT TO THE BEST OF MY KNOWLEDGE AND BELIEF.

Uells, LLC
 Corporate Office: 85 South 200 East
 Vernal, UT 84478 • (435) 789-1017

JUNTAH
 ENGINEERING & LAND SURVEYING

SURVEYED BY: DALLAS NIELSEN, C.M. DATE: 10-21-13
 DRAWN BY: K.B. DATE DRAWN: 10-20-13
 SCALE: 1" = 100' REVISED: 00-00-00

WELL LOCATION PLAT

PDOP = 1.1

NAD 83 (TARGET BOTTOM HOLE)	NAD 83 (ENTRY POINT)	NAD 83 (SURFACE LOCATION)
LATITUDE = 40°27'37.67" (40.46044)	LATITUDE = 40°27'37.60" (40.46044)	LATITUDE = 40°27'37.145" (40.458736)
LONGITUDE = 104°52'24.88" (104.88024)	LONGITUDE = 104°51'49.71" (104.86308)	LONGITUDE = 104°51'47.83" (104.863286)
NAD 83 (TARGET BOTTOM HOLE)	NAD 83 (ENTRY POINT)	NAD 83 (SURFACE LOCATION)
LATITUDE = 40°27'37.73" (40.46041)	LATITUDE = 40°27'37.67" (40.46044)	LATITUDE = 40°27'31.52" (40.458759)
LONGITUDE = 104°52'22.98" (104.88017)	LONGITUDE = 104°51'47.81" (104.86328)	LONGITUDE = 104°51'45.91" (104.862758)