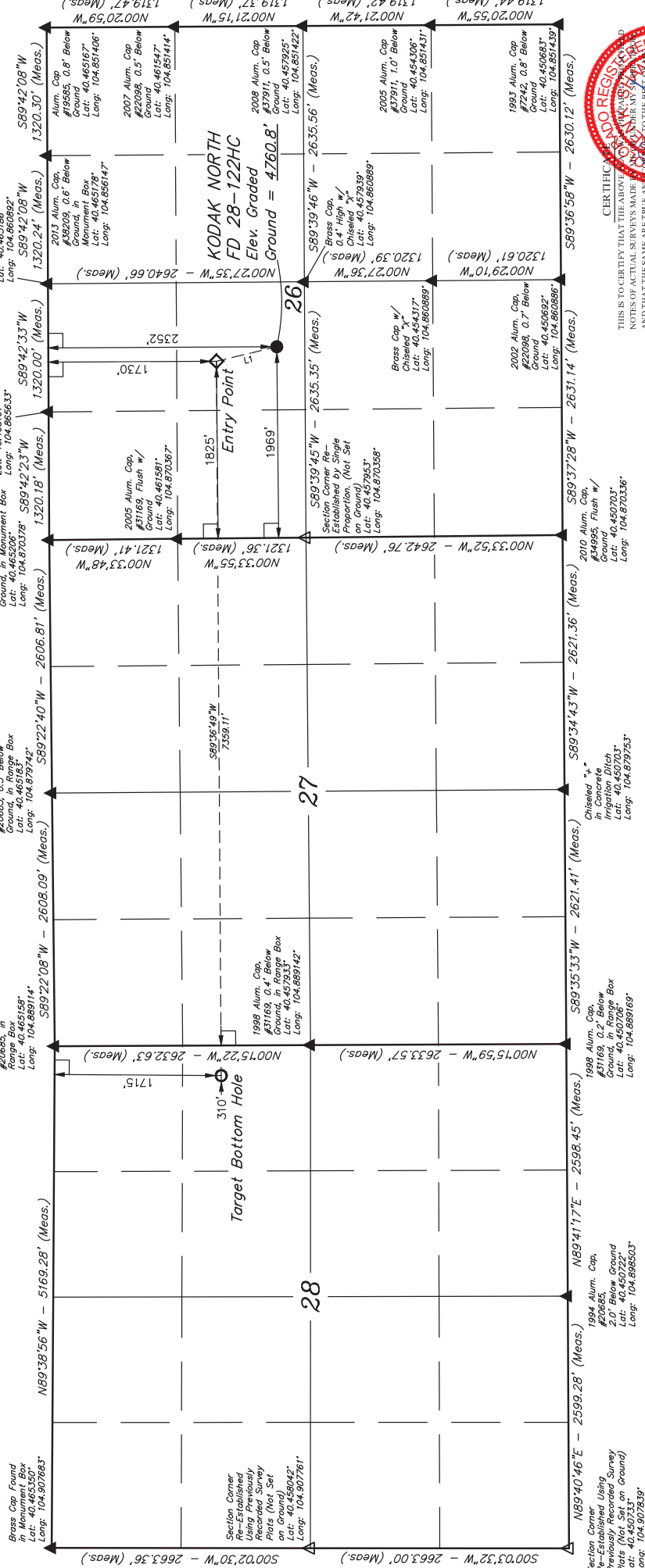


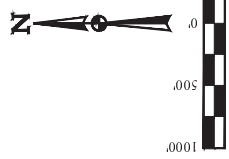
# T6N, R67W, 6th P.M.

**GREAT WESTERN OPERATING COMPANY**  
**KODAK NORTH FD 28-122HC**  
**SE 1/4 NW 1/4, SECTION 26, 16N, R67W, 6th P.M.**  
**WELD COUNTY, COLORADO**

**BASIS OF BEARINGS**  
 BASIS OF BEARINGS IS A G.P.S. OBSERVATION  
**BASIS OF ELEVATION**  
 USGS COOPERATIVE-BASE NETWORK CONTROL STATION,  
 DESIGNATION: VERMILYEA, NG5 DATA SHEET LISTS THE  
 NAVD83 ELEVATION AS BEING 3026 FEET



LINE	DIRECTION	LENGTH
L1	N13°34'44\"/>	



- LEGEND:**
- = 90° SYMBOL
  - = PROPOSED WELL-HOLE
  - = ENTRY POINT
  - ◆ = TARGET BOTTOM HOLE
  - ▲ = SECTION CORNERS LOCATED (NAD 83)
  - △ = SECTION CORNERS RE-ESTABLISHED (Not Set on Ground), (NAD 83)



CERTIFICATE OF REGISTRATION  
 THIS IS TO CERTIFY THAT THE ABOVE  
 NOTES OF ACTUAL SURVEYS MADE  
 TO THE BEST OF MY KNOWLEDGE AND  
 BELIEF.

**UELS, LLC**  
 Corporate Office • 85 South 200 East  
 Vernal, UT 84078 • (435) 789-1017

**JINTAH**  
 SURVEYING & LAND SURVEYING

SURVEYED BY: DALLAS NIELSEN, C.M.  
 DRAWN BY: K.B.  
 SCALE: 1" = 1000'

DATE: 10-21-13
DATE DRAWN: 10-20-15
REVISED: 09-09-00

**WELL LOCATION PLAT**

PDOP = 1.1

NAD 83 (SURFACE LOCATION)	NAD 83 (ENTRY POINT)	NAD 83 (TARGET BOTTOM HOLE)
LATITUDE = 40°27'31.45" (40.458750)	LATITUDE = 40°27'37.60" (40.460444)	LATITUDE = 40°27'37.67" (40.460454)
LONGITUDE = 104°51'47.83" (104.862586)	LONGITUDE = 104°51'49.71" (104.863808)	LONGITUDE = 104°53'24.88" (104.898244)
NAD 27 (SURFACE LOCATION)	NAD 27 (ENTRY POINT)	NAD 27 (TARGET BOTTOM HOLE)
LATITUDE = 40°27'31.52" (40.458750)	LATITUDE = 40°27'37.67" (40.460444)	LATITUDE = 40°27'37.73" (40.460481)
LONGITUDE = 104°51'48.81" (104.862581)	LONGITUDE = 104°51'47.81" (104.862581)	LONGITUDE = 104°53'22.98" (104.898171)