



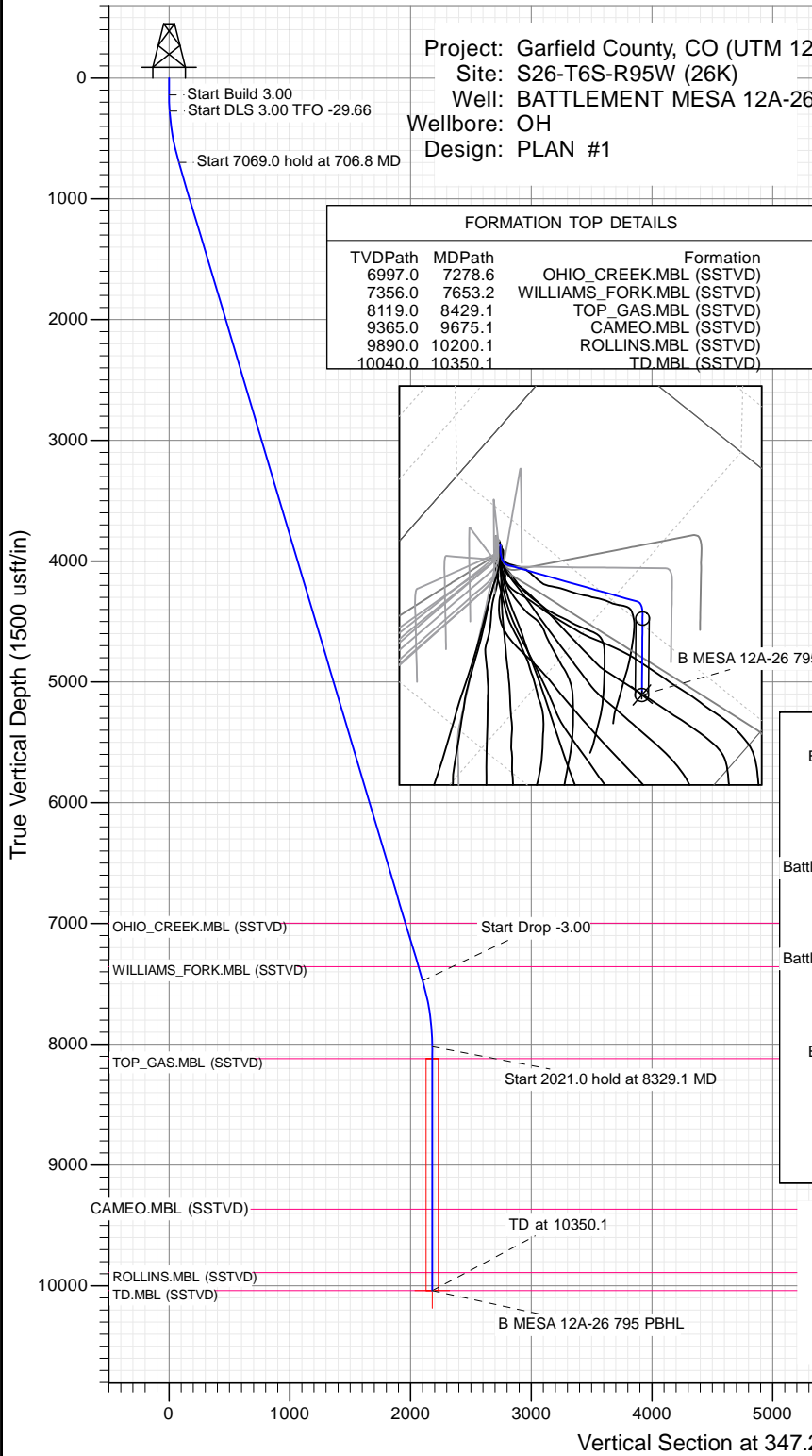
SECTION DETAILS

Sec	MD	Inc	Azi	TVD	+N/-S	+E/-W	Dleg	TFace	VSec	Target
1	0.0	0.00	0.00	0.0	0.0	0.0	0.00	0.00	0.0	
2	140.0	0.00	0.00	140.0	0.0	0.0	0.00	0.00	0.0	
3	273.3	4.00	10.00	273.2	4.6	0.8	3.00	10.00	4.3	
4	706.8	16.60	347.06	699.0	80.1	-10.5	3.00	-29.66	80.5	
5	7775.8	16.60	347.06	7473.5	2048.0	-462.8	0.00	0.00	2099.6	
6	8329.1	0.00	0.00	8019.0	2125.5	-480.6	3.00	180.00	2179.2	
7	10350.1	0.00	0.00	10040.0	2125.5	-480.6	0.00	0.00	2179.2	B MESA 12A-26 795 PBHL

Project: Garfield County, CO (UTM 12  
 Site: S26-T6S-R95W (26K)  
 Well: BATTLEMENT MESA 12A-26  
 Wellbore: OH  
 Design: PLAN #1

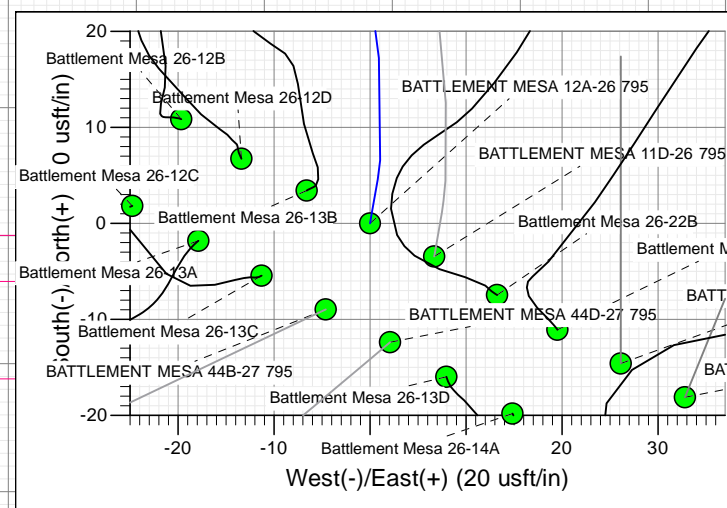
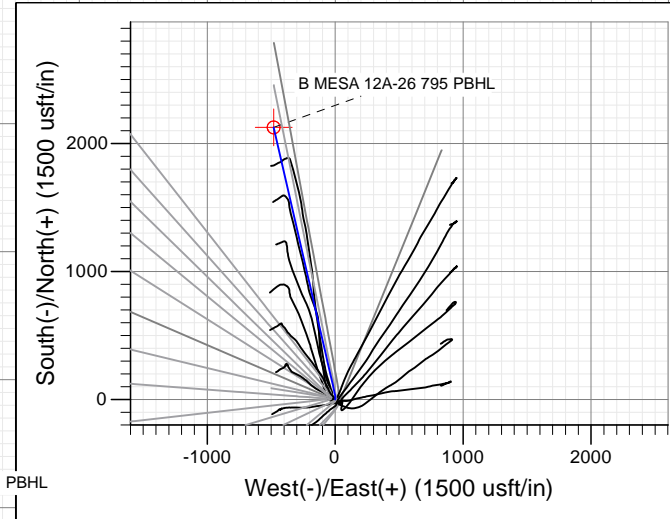
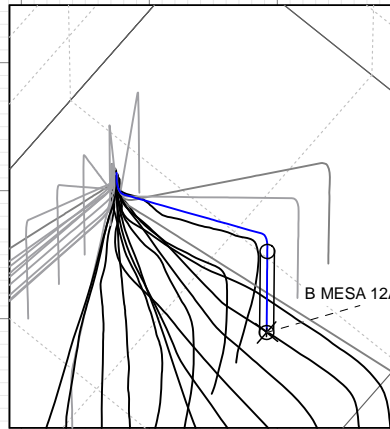
PLAN #1  
 BATTLEMENT MESA 12A-26 795  
 15XXX; LR  
 30 KB @ 8964.0usft  
 Ground Level @ 8964.0  
 NAD 1927 - Western US  
 Well BATTLEMENT MESA 12A-26 795, True North

Type	Target	Azimuth	Origin	Type	N/S	E/W	From
TD	No Target (Freehand)	347.26	Slot		0.0	0.0	TVD
Name		TVD	+N/-S	+E/-W	Latitude	Longitude	
B MESA 12A-26 795 PBHL		10040.0	2125.5	-480.6	39.411658	-107.971314	



FORMATION TOP DETAILS

TVDPath	MDPath	Formation
6997.0	7278.6	OHIO_CREEK.MBL (SSTVD)
7356.0	7653.2	WILLIAMS_FORK.MBL (SSTVD)
8119.0	8429.1	TOP_GAS.MBL (SSTVD)
9365.0	9675.1	CAMEO.MBL (SSTVD)
9890.0	10200.1	ROLLINS.MBL (SSTVD)
10040.0	10350.1	TD.MBL (SSTVD)



T M  
 Azimuths to True North  
 Magnetic North: 9.47°  
 Magnetic Field  
 Strength: 51904.6snT  
 Dip Angle: 65.63°  
 Date: 11/6/2015  
 Model: HDGM

CASING DETAILS  
 No casing data is available



WELL DETAILS: BATTLEMENT MESA 12A-26 795

+N/-S	+E/-W	Northing	Easting	Ground Level:	8964.0	Latitude	Longitude
0.0	0.0	14324075.20	2496489.40			39.405825	-107.969614



## Planning Report

<b>Database:</b>	USA EDM 5000 Multi Users DB	<b>Local Co-ordinate Reference:</b>	Well BATTLEMENT MESA 12A-26 795
<b>Company:</b>	Caerus Oil & Gas	<b>TVD Reference:</b>	30' KB @ 8994.0usft
<b>Project:</b>	Garfield County, CO (UTM 12N)	<b>MD Reference:</b>	30' KB @ 8994.0usft
<b>Site:</b>	S26-T6S-R95W (26K)	<b>North Reference:</b>	True
<b>Well:</b>	BATTLEMENT MESA 12A-26 795	<b>Survey Calculation Method:</b>	Minimum Curvature
<b>Wellbore:</b>	OH		
<b>Design:</b>	PLAN #1		

<b>Project</b>	Garfield County, CO (UTM 12N)		
<b>Map System:</b>	Universal Transverse Mercator (US Survey Feet)	<b>System Datum:</b>	Mean Sea Level
<b>Geo Datum:</b>	NAD 1927 - Western US		
<b>Map Zone:</b>	Zone 12N (114 W to 108 W)		

<b>Site</b>	S26-T6S-R95W (26K)				
<b>Site Position:</b>		<b>Northing:</b>	14,324,088.50 usft	<b>Latitude:</b>	39.405864
<b>From:</b>	Map	<b>Easting:</b>	2,496,462.30 usft	<b>Longitude:</b>	-107.969708
<b>Position Uncertainty:</b>	0.0 usft	<b>Slot Radius:</b>	13-3/16"	<b>Grid Convergence:</b>	1.92 °

<b>Well</b>	BATTLEMENT MESA 12A-26 795					
<b>Well Position</b>	<b>+N/-S</b>	0.0 usft	<b>Northing:</b>	14,324,075.20 usft	<b>Latitude:</b>	39.405825
	<b>+E/-W</b>	0.0 usft	<b>Easting:</b>	2,496,489.40 usft	<b>Longitude:</b>	-107.969614
<b>Position Uncertainty</b>		0.0 usft	<b>Wellhead Elevation:</b>	0.0 usft	<b>Ground Level:</b>	8,964.0 usft

<b>Wellbore</b>	OH				
<b>Magnetics</b>	<b>Model Name</b>	<b>Sample Date</b>	<b>Declination</b>	<b>Dip Angle</b>	<b>Field Strength</b>
	HDGM	11/6/2015	(°) 9.47	(°) 65.63	(nT) 51,905

<b>Design</b>	PLAN #1			
<b>Audit Notes:</b>				
<b>Version:</b>	<b>Phase:</b>	PLAN	<b>Tie On Depth:</b>	0.0
<b>Vertical Section:</b>	<b>Depth From (TVD)</b>	<b>+N/-S</b>	<b>+E/-W</b>	<b>Direction</b>
	(usft)	(usft)	(usft)	(°)
	0.0	0.0	0.0	347.26

Plan Sections										
Measured Depth (usft)	Inclination (°)	Azimuth (°)	Vertical Depth (usft)	+N/-S (usft)	+E/-W (usft)	Dogleg Rate (°/100usft)	Build Rate (°/100usft)	Turn Rate (°/100usft)	TFO (°)	Target
0.0	0.00	0.00	0.0	0.0	0.0	0.00	0.00	0.00	0.00	
140.0	0.00	0.00	140.0	0.0	0.0	0.00	0.00	0.00	0.00	
273.3	4.00	10.00	273.2	4.6	0.8	3.00	3.00	0.00	10.00	
706.8	16.60	347.06	699.0	80.1	-10.5	3.00	2.91	-5.29	-29.66	
7,775.8	16.60	347.06	7,473.5	2,048.0	-462.8	0.00	0.00	0.00	0.00	
8,329.1	0.00	0.00	8,019.0	2,125.5	-480.6	3.00	-3.00	0.00	180.00	
10,350.1	0.00	0.00	10,040.0	2,125.5	-480.6	0.00	0.00	0.00	0.00	B MESA 12A-26 795 I

Planning Report

<b>Database:</b>	USA EDM 5000 Multi Users DB	<b>Local Co-ordinate Reference:</b>	Well BATTLEMENT MESA 12A-26 795
<b>Company:</b>	Caerus Oil & Gas	<b>TVD Reference:</b>	30' KB @ 8994.0usft
<b>Project:</b>	Garfield County, CO (UTM 12N)	<b>MD Reference:</b>	30' KB @ 8994.0usft
<b>Site:</b>	S26-T6S-R95W (26K)	<b>North Reference:</b>	True
<b>Well:</b>	BATTLEMENT MESA 12A-26 795	<b>Survey Calculation Method:</b>	Minimum Curvature
<b>Wellbore:</b>	OH		
<b>Design:</b>	PLAN #1		

Planned Survey									
Measured Depth (usft)	Inclination (°)	Azimuth (°)	Vertical Depth (usft)	+N/-S (usft)	+E/-W (usft)	Vertical Section (usft)	Dogleg Rate (°/100usft)	Build Rate (°/100u)	Comments / Formations
0.0	0.00	0.00	0.0	0.0	0.0	0.0	0.00	0.00	
100.0	0.00	0.00	100.0	0.0	0.0	0.0	0.00	0.00	
140.0	0.00	0.00	140.0	0.0	0.0	0.0	0.00	0.00	Start Build 3.00
200.0	1.80	10.00	200.0	0.9	0.2	0.9	3.00	3.00	
273.3	4.00	10.00	273.2	4.6	0.8	4.3	3.00	3.00	Start DLS 3.00 TFO -29.66
300.0	4.71	5.18	299.8	6.6	1.1	6.2	3.00	2.67	
400.0	7.54	355.53	399.2	17.2	0.9	16.6	3.00	2.83	
500.0	10.46	351.18	498.0	32.7	-1.0	32.1	3.00	2.92	
600.0	13.42	348.72	595.8	53.1	-4.6	52.8	3.00	2.96	
700.0	16.39	347.14	692.4	78.2	-10.1	78.5	3.00	2.97	
706.8	16.60	347.06	699.0	80.1	-10.5	80.5	3.00	2.98	Start 7069.0 hold at 706.8 MD
800.0	16.60	347.06	788.3	106.1	-16.4	107.1	0.00	0.00	
900.0	16.60	347.06	884.1	133.9	-22.8	135.7	0.00	0.00	
1,000.0	16.60	347.06	979.9	161.7	-29.2	164.2	0.00	0.00	
1,100.0	16.60	347.06	1,075.8	189.6	-35.6	192.8	0.00	0.00	
1,200.0	16.60	347.06	1,171.6	217.4	-42.0	221.3	0.00	0.00	
1,300.0	16.60	347.06	1,267.5	245.3	-48.4	249.9	0.00	0.00	
1,400.0	16.60	347.06	1,363.3	273.1	-54.8	278.5	0.00	0.00	
1,500.0	16.60	347.06	1,459.1	300.9	-61.2	307.0	0.00	0.00	
1,600.0	16.60	347.06	1,555.0	328.8	-67.6	335.6	0.00	0.00	
1,700.0	16.60	347.06	1,650.8	356.6	-74.0	364.2	0.00	0.00	
1,800.0	16.60	347.06	1,746.6	384.5	-80.4	392.7	0.00	0.00	
1,900.0	16.60	347.06	1,842.5	412.3	-86.8	421.3	0.00	0.00	
2,000.0	16.60	347.06	1,938.3	440.1	-93.2	449.8	0.00	0.00	
2,100.0	16.60	347.06	2,034.1	468.0	-99.6	478.4	0.00	0.00	
2,200.0	16.60	347.06	2,130.0	495.8	-106.0	507.0	0.00	0.00	
2,300.0	16.60	347.06	2,225.8	523.6	-112.4	535.5	0.00	0.00	
2,400.0	16.60	347.06	2,321.6	551.5	-118.8	564.1	0.00	0.00	
2,500.0	16.60	347.06	2,417.5	579.3	-125.2	592.7	0.00	0.00	
2,600.0	16.60	347.06	2,513.3	607.2	-131.6	621.2	0.00	0.00	
2,700.0	16.60	347.06	2,609.1	635.0	-138.0	649.8	0.00	0.00	
2,800.0	16.60	347.06	2,705.0	662.8	-144.4	678.4	0.00	0.00	
2,900.0	16.60	347.06	2,800.8	690.7	-150.8	706.9	0.00	0.00	
3,000.0	16.60	347.06	2,896.6	718.5	-157.2	735.5	0.00	0.00	
3,100.0	16.60	347.06	2,992.5	746.3	-163.6	764.0	0.00	0.00	
3,200.0	16.60	347.06	3,088.3	774.2	-170.0	792.6	0.00	0.00	
3,300.0	16.60	347.06	3,184.1	802.0	-176.4	821.2	0.00	0.00	
3,400.0	16.60	347.06	3,280.0	829.9	-182.8	849.7	0.00	0.00	
3,500.0	16.60	347.06	3,375.8	857.7	-189.2	878.3	0.00	0.00	
3,600.0	16.60	347.06	3,471.6	885.5	-195.6	906.9	0.00	0.00	
3,700.0	16.60	347.06	3,567.5	913.4	-202.0	935.4	0.00	0.00	
3,800.0	16.60	347.06	3,663.3	941.2	-208.4	964.0	0.00	0.00	
3,900.0	16.60	347.06	3,759.1	969.0	-214.8	992.6	0.00	0.00	
4,000.0	16.60	347.06	3,855.0	996.9	-221.2	1,021.1	0.00	0.00	
4,100.0	16.60	347.06	3,950.8	1,024.7	-227.6	1,049.7	0.00	0.00	
4,200.0	16.60	347.06	4,046.6	1,052.6	-234.0	1,078.2	0.00	0.00	
4,300.0	16.60	347.06	4,142.5	1,080.4	-240.4	1,106.8	0.00	0.00	
4,400.0	16.60	347.06	4,238.3	1,108.2	-246.8	1,135.4	0.00	0.00	
4,500.0	16.60	347.06	4,334.1	1,136.1	-253.2	1,163.9	0.00	0.00	
4,600.0	16.60	347.06	4,430.0	1,163.9	-259.6	1,192.5	0.00	0.00	
4,700.0	16.60	347.06	4,525.8	1,191.8	-266.0	1,221.1	0.00	0.00	
4,800.0	16.60	347.06	4,621.6	1,219.6	-272.4	1,249.6	0.00	0.00	

## Planning Report

<b>Database:</b>	USA EDM 5000 Multi Users DB	<b>Local Co-ordinate Reference:</b>	Well BATTLEMENT MESA 12A-26 795
<b>Company:</b>	Caerus Oil & Gas	<b>TVD Reference:</b>	30' KB @ 8994.0usft
<b>Project:</b>	Garfield County, CO (UTM 12N)	<b>MD Reference:</b>	30' KB @ 8994.0usft
<b>Site:</b>	S26-T6S-R95W (26K)	<b>North Reference:</b>	True
<b>Well:</b>	BATTLEMENT MESA 12A-26 795	<b>Survey Calculation Method:</b>	Minimum Curvature
<b>Wellbore:</b>	OH		
<b>Design:</b>	PLAN #1		

Planned Survey									
Measured Depth (usft)	Inclination (°)	Azimuth (°)	Vertical Depth (usft)	+N/-S (usft)	+E/-W (usft)	Vertical Section (usft)	Dogleg Rate (°/100usft)	Build Rate (°/100u)	Comments / Formations
4,900.0	16.60	347.06	4,717.5	1,247.4	-278.8	1,278.2	0.00	0.00	
5,000.0	16.60	347.06	4,813.3	1,275.3	-285.2	1,306.8	0.00	0.00	
5,100.0	16.60	347.06	4,909.1	1,303.1	-291.6	1,335.3	0.00	0.00	
5,200.0	16.60	347.06	5,005.0	1,330.9	-298.0	1,363.9	0.00	0.00	
5,300.0	16.60	347.06	5,100.8	1,358.8	-304.4	1,392.4	0.00	0.00	
5,400.0	16.60	347.06	5,196.6	1,386.6	-310.7	1,421.0	0.00	0.00	
5,500.0	16.60	347.06	5,292.5	1,414.5	-317.1	1,449.6	0.00	0.00	
5,600.0	16.60	347.06	5,388.3	1,442.3	-323.5	1,478.1	0.00	0.00	
5,700.0	16.60	347.06	5,484.1	1,470.1	-329.9	1,506.7	0.00	0.00	
5,800.0	16.60	347.06	5,580.0	1,498.0	-336.3	1,535.3	0.00	0.00	
5,900.0	16.60	347.06	5,675.8	1,525.8	-342.7	1,563.8	0.00	0.00	
6,000.0	16.60	347.06	5,771.6	1,553.6	-349.1	1,592.4	0.00	0.00	
6,100.0	16.60	347.06	5,867.5	1,581.5	-355.5	1,621.0	0.00	0.00	
6,200.0	16.60	347.06	5,963.3	1,609.3	-361.9	1,649.5	0.00	0.00	
6,300.0	16.60	347.06	6,059.1	1,637.2	-368.3	1,678.1	0.00	0.00	
6,400.0	16.60	347.06	6,155.0	1,665.0	-374.7	1,706.6	0.00	0.00	
6,500.0	16.60	347.06	6,250.8	1,692.8	-381.1	1,735.2	0.00	0.00	
6,600.0	16.60	347.06	6,346.6	1,720.7	-387.5	1,763.8	0.00	0.00	
6,700.0	16.60	347.06	6,442.5	1,748.5	-393.9	1,792.3	0.00	0.00	
6,800.0	16.60	347.06	6,538.3	1,776.3	-400.3	1,820.9	0.00	0.00	
6,900.0	16.60	347.06	6,634.1	1,804.2	-406.7	1,849.5	0.00	0.00	
7,000.0	16.60	347.06	6,730.0	1,832.0	-413.1	1,878.0	0.00	0.00	
7,100.0	16.60	347.06	6,825.8	1,859.9	-419.5	1,906.6	0.00	0.00	
7,200.0	16.60	347.06	6,921.6	1,887.7	-425.9	1,935.2	0.00	0.00	
7,278.6	16.60	347.06	6,997.0	1,909.6	-430.9	1,957.6	0.00	0.00	OHIO_CREEK.MBL (SSTVD)
7,300.0	16.60	347.06	7,017.5	1,915.5	-432.3	1,963.7	0.00	0.00	
7,400.0	16.60	347.06	7,113.3	1,943.4	-438.7	1,992.3	0.00	0.00	
7,500.0	16.60	347.06	7,209.1	1,971.2	-445.1	2,020.8	0.00	0.00	
7,600.0	16.60	347.06	7,305.0	1,999.1	-451.5	2,049.4	0.00	0.00	
7,653.2	16.60	347.06	7,356.0	2,013.9	-454.9	2,064.6	0.00	0.00	WILLIAMS_FORK.MBL (SSTVD)
7,700.0	16.60	347.06	7,400.8	2,026.9	-457.9	2,078.0	0.00	0.00	
7,775.8	16.60	347.06	7,473.5	2,048.0	-462.8	2,099.6	0.00	0.00	Start Drop -3.00
7,800.0	15.87	347.06	7,496.7	2,054.6	-464.3	2,106.4	3.00	-3.00	
7,900.0	12.87	347.06	7,593.5	2,078.8	-469.8	2,131.2	3.00	-3.00	
8,000.0	9.87	347.06	7,691.6	2,098.0	-474.2	2,150.9	3.00	-3.00	
8,100.0	6.87	347.06	7,790.5	2,112.2	-477.5	2,165.5	3.00	-3.00	
8,200.0	3.87	347.06	7,890.0	2,121.3	-479.6	2,174.8	3.00	-3.00	
8,300.0	0.87	347.06	7,990.0	2,125.3	-480.5	2,179.0	3.00	-3.00	
8,329.1	0.00	0.00	8,019.0	2,125.5	-480.6	2,179.2	3.00	-3.00	Start 2021.0 hold at 8329.1 MD
8,400.0	0.00	0.00	8,089.9	2,125.5	-480.6	2,179.2	0.00	0.00	
8,429.1	0.00	0.00	8,119.0	2,125.5	-480.6	2,179.2	0.00	0.00	TOP_GAS.MBL (SSTVD)
8,500.0	0.00	0.00	8,189.9	2,125.5	-480.6	2,179.2	0.00	0.00	
8,600.0	0.00	0.00	8,289.9	2,125.5	-480.6	2,179.2	0.00	0.00	
8,700.0	0.00	0.00	8,389.9	2,125.5	-480.6	2,179.2	0.00	0.00	
8,800.0	0.00	0.00	8,489.9	2,125.5	-480.6	2,179.2	0.00	0.00	
8,900.0	0.00	0.00	8,589.9	2,125.5	-480.6	2,179.2	0.00	0.00	
9,000.0	0.00	0.00	8,689.9	2,125.5	-480.6	2,179.2	0.00	0.00	
9,100.0	0.00	0.00	8,789.9	2,125.5	-480.6	2,179.2	0.00	0.00	
9,200.0	0.00	0.00	8,889.9	2,125.5	-480.6	2,179.2	0.00	0.00	
9,300.0	0.00	0.00	8,989.9	2,125.5	-480.6	2,179.2	0.00	0.00	
9,400.0	0.00	0.00	9,089.9	2,125.5	-480.6	2,179.2	0.00	0.00	
9,500.0	0.00	0.00	9,189.9	2,125.5	-480.6	2,179.2	0.00	0.00	

Planning Report

<b>Database:</b>	USA EDM 5000 Multi Users DB	<b>Local Co-ordinate Reference:</b>	Well BATTLEMENT MESA 12A-26 795
<b>Company:</b>	Caerus Oil & Gas	<b>TVD Reference:</b>	30' KB @ 8994.0usft
<b>Project:</b>	Garfield County, CO (UTM 12N)	<b>MD Reference:</b>	30' KB @ 8994.0usft
<b>Site:</b>	S26-T6S-R95W (26K)	<b>North Reference:</b>	True
<b>Well:</b>	BATTLEMENT MESA 12A-26 795	<b>Survey Calculation Method:</b>	Minimum Curvature
<b>Wellbore:</b>	OH		
<b>Design:</b>	PLAN #1		

Planned Survey									
Measured Depth (usft)	Inclination (°)	Azimuth (°)	Vertical Depth (usft)	+N/-S (usft)	+E/-W (usft)	Vertical Section (usft)	Dogleg Rate (°/100usft)	Build Rate (°/100u)	Comments / Formations
9,600.0	0.00	0.00	9,289.9	2,125.5	-480.6	2,179.2	0.00	0.00	
9,675.1	0.00	0.00	9,365.0	2,125.5	-480.6	2,179.2	0.00	0.00	CAMEO.MBL (SSTVD)
9,700.0	0.00	0.00	9,389.9	2,125.5	-480.6	2,179.2	0.00	0.00	
9,800.0	0.00	0.00	9,489.9	2,125.5	-480.6	2,179.2	0.00	0.00	
9,900.0	0.00	0.00	9,589.9	2,125.5	-480.6	2,179.2	0.00	0.00	
10,000.0	0.00	0.00	9,689.9	2,125.5	-480.6	2,179.2	0.00	0.00	
10,100.0	0.00	0.00	9,789.9	2,125.5	-480.6	2,179.2	0.00	0.00	
10,200.0	0.00	0.00	9,889.9	2,125.5	-480.6	2,179.2	0.00	0.00	
10,200.1	0.00	0.00	9,890.0	2,125.5	-480.6	2,179.2	0.00	0.00	ROLLINS.MBL (SSTVD)
10,300.0	0.00	0.00	9,989.9	2,125.5	-480.6	2,179.2	0.00	0.00	
10,350.1	0.00	0.00	10,040.0	2,125.5	-480.6	2,179.2	0.00	0.00	TD at 10350.1 - TD.MBL (SSTVD)

Targets									
Target Name	Dip Angle (°)	Dip Dir. (°)	TVD (usft)	+N/-S (usft)	+E/-W (usft)	Northing (usft)	Easting (usft)	Latitude	Longitude
B MESA 12A-26 795 PB - hit/miss target - Shape - Circle (radius 50.0)	0.00	0.00	10,040.0	2,125.5	-480.6	14,326,183.40	2,495,937.70	39.411658	-107.971314

Formations						
Measured Depth (usft)	Vertical Depth (usft)	Name	Lithology	Dip (°)	Dip Direction (°)	
7,278.6	6,997.0	OHIO_CREEK.MBL (SSTVD)		0.00		
7,653.2	7,356.0	WILLIAMS_FORK.MBL (SSTVD)		0.00		
8,429.1	8,119.0	TOP_GAS.MBL (SSTVD)		0.00		
9,675.1	9,365.0	CAMEO.MBL (SSTVD)		0.00		
10,200.1	9,890.0	ROLLINS.MBL (SSTVD)		0.00		
10,350.1	10,040.0	TD.MBL (SSTVD)		0.00		

Plan Annotations				
Measured Depth (usft)	Vertical Depth (usft)	+N/-S (usft)	+E/-W (usft)	Comment
140.0	140.0	0.0	0.0	Start Build 3.00
273.3	273.2	4.6	0.8	Start DLS 3.00 TFO -29.66
706.8	699.0	80.1	-10.5	Start 7069.0 hold at 706.8 MD
7,775.8	7,473.5	2,048.0	-462.8	Start Drop -3.00
8,329.1	8,019.0	2,125.5	-480.6	Start 2021.0 hold at 8329.1 MD
10,350.1	10,040.0	2,125.5	-480.6	TD at 10350.1