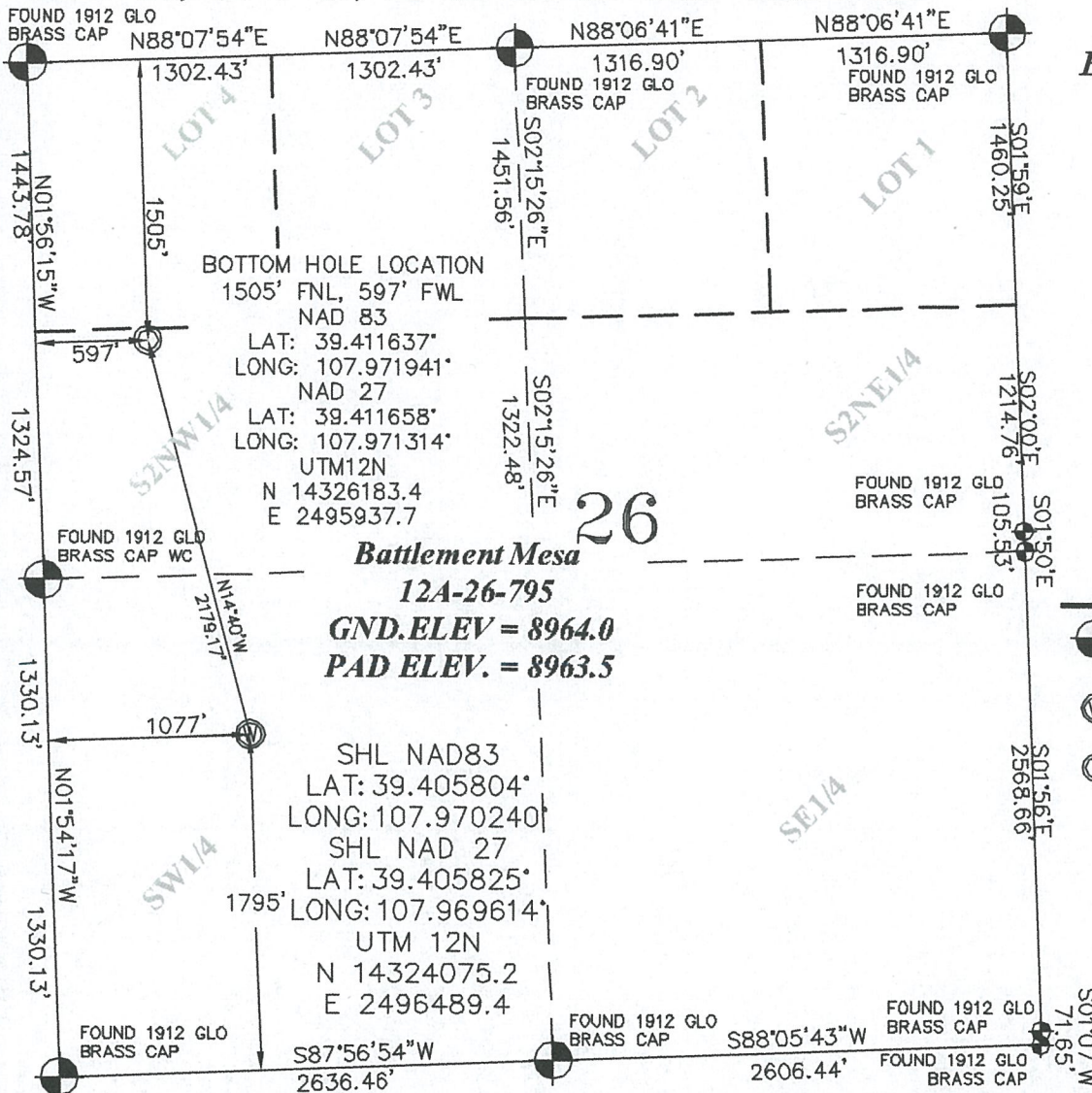


SEC. 26, T. 7 S., R. 95 W. OF THE 6TH P.M.

**PLAT 1
BM 26K-795
PAD
LOCATION**

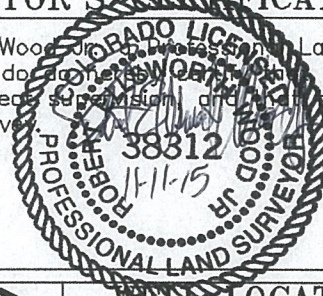


- LEGEND-**
- FIELD SURVEYED SECTION CORNER LOCATIONS
 - FIELD SURVEYED WELL LOCATION
 - CALCULATED BOTTOM HOLE LOCATION

THIS WELL LOCATION PLAT WAS PREPARED FOR CAERUS PICEANCE LLC TO LOCATE THE BATTLEMENT MESA #12A-26-795 WELL, 1795 FEET FROM THE SOUTH LINE AND 1077 FEET FROM THE WEST LINE IN THE NW1/4SW1/4 OF SECTION 26, T. 7 S., R. 95 W. OF THE 6TH P.M. GARFIELD COUNTY, COLORADO.

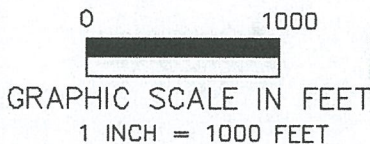
SURVEYOR'S CERTIFICATE

I, Robert Ellsworth Wood, a Professional Land Surveyor in the State of Colorado, do hereby certify that this Survey was made under my direct supervision and that this Plat represents said Survey.



REFERENCE NOTES

- 1) T. 7 S., R. 95 W., 6TH P.M. GLO PLAT.
- 2) U.S.G.S. QUAD: PARACHUTE, CO
- 3) ELEVATIONS BASED ON N.A.V.D. 1988 LIDAR BASED CONTROL PT CP MON 8
- 4) LATITUDES AND LONGITUDES ARE BASED ON NAD 83, COLORADO CENTRAL ZONE.
- 5) GPS OPERATOR ROBERT WOOD, OBSERVED A PPOF OF 1.9.
- 6) ALL GPS OBSERVATIONS ARE IN COMPLIANCE WITH COGCC RULE NO. 215.
- 7) SURFACE AND BOTTOM HOLE LOCATIONS ARE MEASURED 90' FROM SECTION LINES.



WELL LOCATION PLAT

		CONSTRUCTION SURVEYS, INC. 2012 SUNRISE BLVD. SILT, CO 81652 (970)876-5753	
SURVEY BY: REW 10/13/15		PDOP: 1.9	
DRAWN BY: REW 11/06/15		DWG: CAERUS\BM26K-795	
REVISED: REW 11/11/15 INCORRECT TEXT BHL AND SHL UTM			