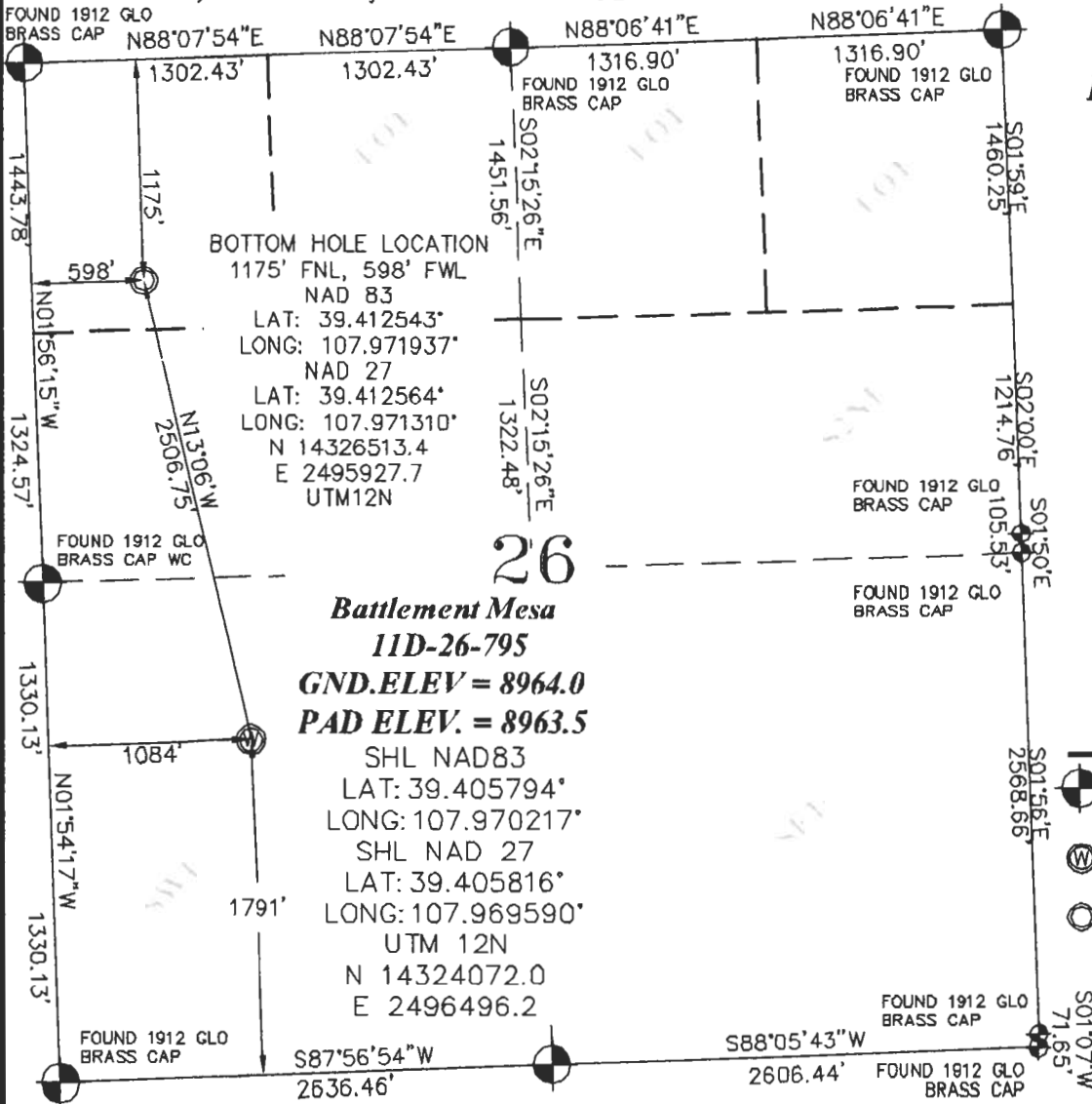


SEC. 26, T. 7 S., R. 95 W. OF THE 6TH P.M.

PLAT 1

BM 26K-795
PAD
LOCATION



BOTTOM HOLE LOCATION
1175' FNL, 598' FWL
NAD 83
LAT: 39.412543°
LONG: 107.971937°
NAD 27
LAT: 39.412564°
LONG: 107.971310°
N 14326513.4
E 2495927.7
UTM12N

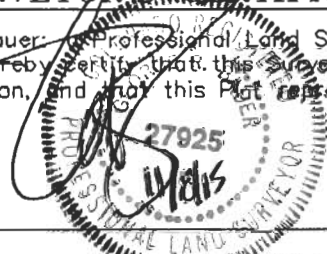
26
Battlement Mesa
11D-26-795
GND.ELEV = 8964.0
PAD ELEV. = 8963.5
SHL NAD83
LAT: 39.405794°
LONG: 107.970217°
SHL NAD 27
LAT: 39.405816°
LONG: 107.969590°
UTM 12N
N 14324072.0
E 2496496.2

- LEGEND-**
- FIELD SURVEYED SECTION CORNER LOCATIONS
 - FIELD SURVEYED WELL LOCATION
 - CALCULATED BOTTOM HOLE LOCATION

THIS WELL LOCATION PLAT WAS PREPARED FOR CAERUS PICEANCE LLC TO LOCATE THE BATTLEMENT MESA #11D-26-795 WELL, 1791 FEET FROM THE SOUTH LINE AND 1084 FEET FROM THE WEST LINE IN THE NW1/4SW1/4 OF SECTION 26, T. 7 S., R. 95 W. OF THE 6TH P.M. GARFIELD COUNTY, COLORADO.

SURVEYOR'S CERTIFICATE

I, George R. Bauer, a Professional Land Surveyor in the State of Colorado do hereby certify that this Survey was made under my direct supervision, and that this Plat represents said Survey.



REFERENCE NOTES

- 1) T. 7 S., R. 95 W., 6TH P.M. GLO PLAT.
- 2) U.S.G.S. QUAD: PARACHUTE, CO
- 3) ELEVATIONS BASED ON N.A.V.D. 1988 LIDAR BASED CONTROL PT CP MDN 8
- 4) LATITUDES AND LONGITUDES ARE BASED ON NAD 83, COLORADO CENTRAL ZONE.
- 5) GPS OPERATOR ROBERT WOOD, OBSERVED A PDOP OF 1.9.
- 6) ALL GPS OBSERVATIONS ARE IN COMPLIANCE WITH COGCC RULE NO. 215.
- 7) SURFACE AND BOTTOM HOLE LOCATIONS ARE MEASURED 90° FROM SECTION LINES.



GRAPHIC SCALE IN FEET
1 INCH = 1000 FEET



WELL LOCATION PLAT	
CONSTRUCTION SURVEYS, INC. 0012 SUNRISE BLVD. SILT, CO 81652 (970)876-5753	
SURVEY BY: REW 10/13/15	PDOP: 1.9
DRAWN BY: REW 11/06/15	DWG: CAERUS\BM26K-795
REVISED:	