



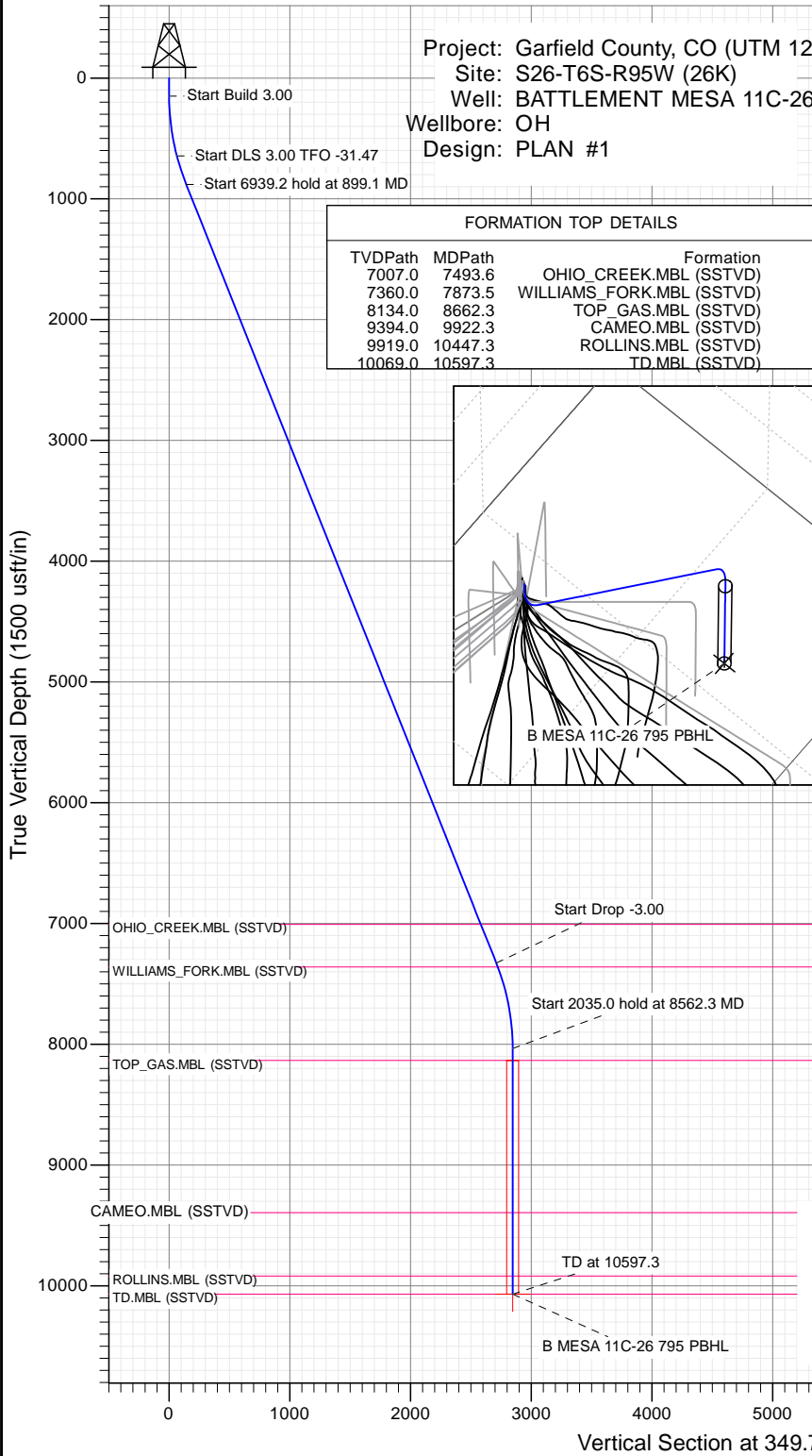
SECTION DETAILS

Sec	MD	Inc	Azi	TVD	+N/-S	+E/-W	Dleg	TFace	Vsect	Target
1	0.0	0.00	0.00	0.0	0.0	0.0	0.00	0.00	0.0	
2	150.0	0.00	0.00	150.0	0.0	0.0	0.00	0.00	0.0	
3	650.0	15.00	0.00	644.3	65.1	0.0	3.00	0.00	64.0	
4	899.1	21.72	349.43	880.7	142.7	-8.5	3.00	-31.47	142.0	
5	7838.3	21.72	349.43	7327.2	2667.1	-479.6	0.00	0.00	2709.9	
6	8562.3	0.00	0.00	8034.0	2800.4	-504.5	3.00	180.00	2845.5	
7	10597.3	0.00	0.00	10069.0	2800.4	-504.5	0.00	0.00	2845.5	B MESA 11C-26 795 PBHL

Project: Garfield County, CO (UTM 12
 Site: S26-T6S-R95W (26K)
 Well: BATTLEMENT MESA 11C-26
 Wellbore: OH
 Design: PLAN #1

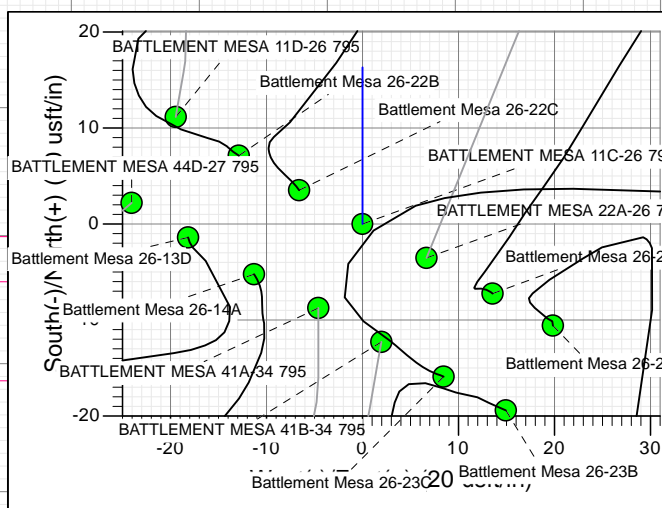
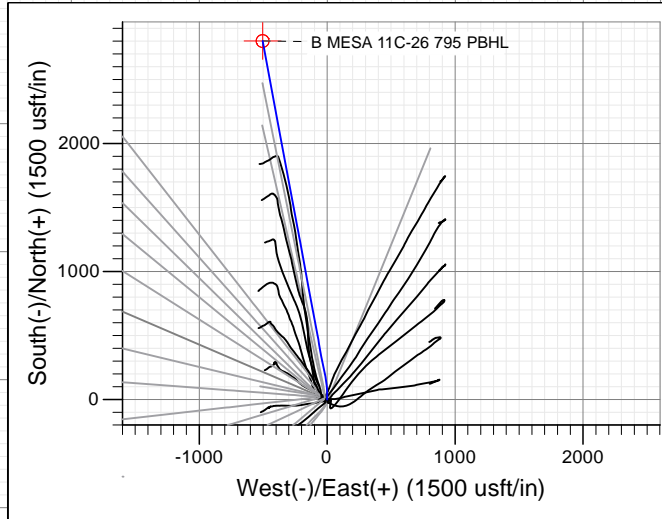
PLAN #1
 BATTLEMENT MESA 11C-26 795
 15XXX; LR
 30 KB @ 8994.0usft
 Ground Level @ 8964.0
 NAD 1927 - Western US
 Well BATTLEMENT MESA 11C-26 795, True North

Type	Target	TD	No Target (Freehand)	Azimuth	Origin	Type	N/S	E/W	From
				349.79	Slot		0.0	0.0	TVD
Name		TVD		+N/-S	+E/-W		Latitude		Longitude
B MESA 11C-26 795 PBHL		10069.0		2800.4	-504.5		39.413470		-107.971306



FORMATION TOP DETAILS

TVDPPath	MDPath	Formation
7007.0	7493.6	OHIO_CREEK.MBL (SSTVD)
7360.0	7873.5	WILLIAMS_FORK.MBL (SSTVD)
8134.0	8662.3	TOP_GAS.MBL (SSTVD)
9394.0	9922.3	CAMEO.MBL (SSTVD)
9919.0	10447.3	ROLLINS.MBL (SSTVD)
10069.0	10597.3	TD.MBL (SSTVD)



Azimuths to True North
 Magnetic North: 9.47°
 Magnetic Field Strength: 51904.6snT
 Dip Angle: 65.63°
 Date: 11/6/2015
 Model: HDGM

CASING DETAILS

No casing data is available



WELL DETAILS: BATTLEMENT MESA 11C-26 795

+N/-S	+E/-W	Northing	Ground Level:	8964.0	Latitude	Longitude
0.0	0.0	14324061.50	Easting	2496516.00	39.405785	-107.969521

Planning Report

Database:	USA EDM 5000 Multi Users DB	Local Co-ordinate Reference:	Well BATTLEMENT MESA 11C-26 795
Company:	Caerus Oil & Gas	TVD Reference:	30' KB @ 8994.0usft
Project:	Garfield County, CO (UTM 12N)	MD Reference:	30' KB @ 8994.0usft
Site:	S26-T6S-R95W (26K)	North Reference:	True
Well:	BATTLEMENT MESA 11C-26 795	Survey Calculation Method:	Minimum Curvature
Wellbore:	OH		
Design:	PLAN #1		

Project	Garfield County, CO (UTM 12N)		
Map System:	Universal Transverse Mercator (US Survey Feet)	System Datum:	Mean Sea Level
Geo Datum:	NAD 1927 - Western US		
Map Zone:	Zone 12N (114 W to 108 W)		

Site	S26-T6S-R95W (26K)				
Site Position:		Northing:	14,324,088.50 usft	Latitude:	39.405864
From:	Map	Easting:	2,496,462.30 usft	Longitude:	-107.969708
Position Uncertainty:	0.0 usft	Slot Radius:	13-3/16"	Grid Convergence:	1.92 °

Well	BATTLEMENT MESA 11C-26 795					
Well Position	+N/-S	0.0 usft	Northing:	14,324,061.50 usft	Latitude:	39.405785
	+E/-W	0.0 usft	Easting:	2,496,516.00 usft	Longitude:	-107.969521
Position Uncertainty		0.0 usft	Wellhead Elevation:	0.0 usft	Ground Level:	8,964.0 usft

Wellbore	OH				
Magnetics	Model Name	Sample Date	Declination (°)	Dip Angle (°)	Field Strength (nT)
	HDGM	11/6/2015	9.47	65.63	51,905

Design	PLAN #1			
Audit Notes:				
Version:	Phase:	PLAN	Tie On Depth:	0.0
Vertical Section:	Depth From (TVD) (usft)	+N/-S (usft)	+E/-W (usft)	Direction (°)
	0.0	0.0	0.0	349.79

Plan Sections										
Measured Depth (usft)	Inclination (°)	Azimuth (°)	Vertical Depth (usft)	+N/-S (usft)	+E/-W (usft)	Dogleg Rate (°/100usft)	Build Rate (°/100usft)	Turn Rate (°/100usft)	TFO (°)	Target
0.0	0.00	0.00	0.0	0.0	0.0	0.00	0.00	0.00	0.00	
150.0	0.00	0.00	150.0	0.0	0.0	0.00	0.00	0.00	0.00	
650.0	15.00	0.00	644.3	65.1	0.0	3.00	3.00	0.00	0.00	
899.1	21.72	349.43	880.7	142.7	-8.5	3.00	2.70	-4.24	-31.47	
7,838.3	21.72	349.43	7,327.2	2,667.1	-479.6	0.00	0.00	0.00	0.00	
8,562.3	0.00	0.00	8,034.0	2,800.4	-504.5	3.00	-3.00	0.00	180.00	
10,597.3	0.00	0.00	10,069.0	2,800.4	-504.5	0.00	0.00	0.00	0.00	B MESA 11C-26 795 I

Planning Report

Database:	USA EDM 5000 Multi Users DB	Local Co-ordinate Reference:	Well BATTLEMENT MESA 11C-26 795
Company:	Caerus Oil & Gas	TVD Reference:	30' KB @ 8994.0usft
Project:	Garfield County, CO (UTM 12N)	MD Reference:	30' KB @ 8994.0usft
Site:	S26-T6S-R95W (26K)	North Reference:	True
Well:	BATTLEMENT MESA 11C-26 795	Survey Calculation Method:	Minimum Curvature
Wellbore:	OH		
Design:	PLAN #1		

Planned Survey									
Measured Depth (usft)	Inclination (°)	Azimuth (°)	Vertical Depth (usft)	+N/-S (usft)	+E/-W (usft)	Vertical Section (usft)	Dogleg Rate (°/100usft)	Build Rate (°/100u)	Comments / Formations
0.0	0.00	0.00	0.0	0.0	0.0	0.0	0.00	0.00	
100.0	0.00	0.00	100.0	0.0	0.0	0.0	0.00	0.00	
150.0	0.00	0.00	150.0	0.0	0.0	0.0	0.00	0.00	Start Build 3.00
200.0	1.50	0.00	200.0	0.7	0.0	0.6	3.00	3.00	
300.0	4.50	0.00	299.8	5.9	0.0	5.8	3.00	3.00	
400.0	7.50	0.00	399.3	16.3	0.0	16.1	3.00	3.00	
500.0	10.50	0.00	498.0	32.0	0.0	31.5	3.00	3.00	
600.0	13.50	0.00	595.8	52.8	0.0	51.9	3.00	3.00	
650.0	15.00	0.00	644.3	65.1	0.0	64.0	3.00	3.00	Start DLS 3.00 TFO -31.47
700.0	16.30	357.21	692.5	78.6	-0.3	77.4	3.00	2.60	
800.0	18.98	352.77	787.7	108.7	-3.1	107.5	3.00	2.68	
899.1	21.72	349.43	880.7	142.7	-8.5	142.0	3.00	2.76	Start 6939.2 hold at 899.1 MD
900.0	21.72	349.43	881.5	143.1	-8.5	142.3	0.00	0.00	
1,000.0	21.72	349.43	974.4	179.4	-15.3	179.3	0.00	0.00	
1,100.0	21.72	349.43	1,067.3	215.8	-22.1	216.3	0.00	0.00	
1,200.0	21.72	349.43	1,160.2	252.2	-28.9	253.3	0.00	0.00	
1,300.0	21.72	349.43	1,253.1	288.6	-35.7	290.3	0.00	0.00	
1,400.0	21.72	349.43	1,346.0	325.0	-42.5	327.3	0.00	0.00	
1,500.0	21.72	349.43	1,438.9	361.3	-49.3	364.3	0.00	0.00	
1,600.0	21.72	349.43	1,531.8	397.7	-56.1	401.3	0.00	0.00	
1,700.0	21.72	349.43	1,624.7	434.1	-62.8	438.4	0.00	0.00	
1,800.0	21.72	349.43	1,717.6	470.5	-69.6	475.4	0.00	0.00	
1,900.0	21.72	349.43	1,810.5	506.8	-76.4	512.4	0.00	0.00	
2,000.0	21.72	349.43	1,903.4	543.2	-83.2	549.4	0.00	0.00	
2,100.0	21.72	349.43	1,996.3	579.6	-90.0	586.4	0.00	0.00	
2,200.0	21.72	349.43	2,089.2	616.0	-96.8	623.4	0.00	0.00	
2,300.0	21.72	349.43	2,182.1	652.4	-103.6	660.4	0.00	0.00	
2,400.0	21.72	349.43	2,275.0	688.7	-110.4	697.4	0.00	0.00	
2,500.0	21.72	349.43	2,367.9	725.1	-117.2	734.4	0.00	0.00	
2,600.0	21.72	349.43	2,460.8	761.5	-124.0	771.4	0.00	0.00	
2,700.0	21.72	349.43	2,553.7	797.9	-130.7	808.4	0.00	0.00	
2,800.0	21.72	349.43	2,646.6	834.3	-137.5	845.4	0.00	0.00	
2,900.0	21.72	349.43	2,739.5	870.6	-144.3	882.4	0.00	0.00	
3,000.0	21.72	349.43	2,832.4	907.0	-151.1	919.4	0.00	0.00	
3,100.0	21.72	349.43	2,925.3	943.4	-157.9	956.4	0.00	0.00	
3,200.0	21.72	349.43	3,018.2	979.8	-164.7	993.4	0.00	0.00	
3,300.0	21.72	349.43	3,111.1	1,016.1	-171.5	1,030.5	0.00	0.00	
3,400.0	21.72	349.43	3,204.0	1,052.5	-178.3	1,067.5	0.00	0.00	
3,500.0	21.72	349.43	3,296.9	1,088.9	-185.1	1,104.5	0.00	0.00	
3,600.0	21.72	349.43	3,389.8	1,125.3	-191.9	1,141.5	0.00	0.00	
3,700.0	21.72	349.43	3,482.7	1,161.7	-198.6	1,178.5	0.00	0.00	
3,800.0	21.72	349.43	3,575.6	1,198.0	-205.4	1,215.5	0.00	0.00	
3,900.0	21.72	349.43	3,668.5	1,234.4	-212.2	1,252.5	0.00	0.00	
4,000.0	21.72	349.43	3,761.4	1,270.8	-219.0	1,289.5	0.00	0.00	
4,100.0	21.72	349.43	3,854.3	1,307.2	-225.8	1,326.5	0.00	0.00	
4,200.0	21.72	349.43	3,947.2	1,343.6	-232.6	1,363.5	0.00	0.00	
4,300.0	21.72	349.43	4,040.1	1,379.9	-239.4	1,400.5	0.00	0.00	
4,400.0	21.72	349.43	4,133.0	1,416.3	-246.2	1,437.5	0.00	0.00	
4,500.0	21.72	349.43	4,225.9	1,452.7	-253.0	1,474.5	0.00	0.00	
4,600.0	21.72	349.43	4,318.8	1,489.1	-259.8	1,511.5	0.00	0.00	
4,700.0	21.72	349.43	4,411.7	1,525.5	-266.5	1,548.5	0.00	0.00	
4,800.0	21.72	349.43	4,504.6	1,561.8	-273.3	1,585.6	0.00	0.00	

Planning Report

Database:	USA EDM 5000 Multi Users DB	Local Co-ordinate Reference:	Well BATTLEMENT MESA 11C-26 795
Company:	Caerus Oil & Gas	TVD Reference:	30' KB @ 8994.0usft
Project:	Garfield County, CO (UTM 12N)	MD Reference:	30' KB @ 8994.0usft
Site:	S26-T6S-R95W (26K)	North Reference:	True
Well:	BATTLEMENT MESA 11C-26 795	Survey Calculation Method:	Minimum Curvature
Wellbore:	OH		
Design:	PLAN #1		

Planned Survey									
Measured Depth (usft)	Inclination (°)	Azimuth (°)	Vertical Depth (usft)	+N/-S (usft)	+E/-W (usft)	Vertical Section (usft)	Dogleg Rate (°/100usft)	Build Rate (°/100u)	Comments / Formations
4,900.0	21.72	349.43	4,597.5	1,598.2	-280.1	1,622.6	0.00	0.00	
5,000.0	21.72	349.43	4,690.4	1,634.6	-286.9	1,659.6	0.00	0.00	
5,100.0	21.72	349.43	4,783.3	1,671.0	-293.7	1,696.6	0.00	0.00	
5,200.0	21.72	349.43	4,876.2	1,707.3	-300.5	1,733.6	0.00	0.00	
5,300.0	21.72	349.43	4,969.1	1,743.7	-307.3	1,770.6	0.00	0.00	
5,400.0	21.72	349.43	5,062.0	1,780.1	-314.1	1,807.6	0.00	0.00	
5,500.0	21.72	349.43	5,154.9	1,816.5	-320.9	1,844.6	0.00	0.00	
5,600.0	21.72	349.43	5,247.8	1,852.9	-327.7	1,881.6	0.00	0.00	
5,700.0	21.72	349.43	5,340.7	1,889.2	-334.4	1,918.6	0.00	0.00	
5,800.0	21.72	349.43	5,433.6	1,925.6	-341.2	1,955.6	0.00	0.00	
5,900.0	21.72	349.43	5,526.5	1,962.0	-348.0	1,992.6	0.00	0.00	
6,000.0	21.72	349.43	5,619.4	1,998.4	-354.8	2,029.6	0.00	0.00	
6,100.0	21.72	349.43	5,712.3	2,034.8	-361.6	2,066.6	0.00	0.00	
6,200.0	21.72	349.43	5,805.2	2,071.1	-368.4	2,103.6	0.00	0.00	
6,300.0	21.72	349.43	5,898.1	2,107.5	-375.2	2,140.6	0.00	0.00	
6,400.0	21.72	349.43	5,991.0	2,143.9	-382.0	2,177.7	0.00	0.00	
6,500.0	21.72	349.43	6,083.9	2,180.3	-388.8	2,214.7	0.00	0.00	
6,600.0	21.72	349.43	6,176.8	2,216.7	-395.6	2,251.7	0.00	0.00	
6,700.0	21.72	349.43	6,269.7	2,253.0	-402.3	2,288.7	0.00	0.00	
6,800.0	21.72	349.43	6,362.6	2,289.4	-409.1	2,325.7	0.00	0.00	
6,900.0	21.72	349.43	6,455.5	2,325.8	-415.9	2,362.7	0.00	0.00	
7,000.0	21.72	349.43	6,548.4	2,362.2	-422.7	2,399.7	0.00	0.00	
7,100.0	21.72	349.43	6,641.3	2,398.5	-429.5	2,436.7	0.00	0.00	
7,200.0	21.72	349.43	6,734.2	2,434.9	-436.3	2,473.7	0.00	0.00	
7,300.0	21.72	349.43	6,827.1	2,471.3	-443.1	2,510.7	0.00	0.00	
7,400.0	21.72	349.43	6,920.0	2,507.7	-449.9	2,547.7	0.00	0.00	
7,493.6	21.72	349.43	7,007.0	2,541.7	-456.2	2,582.4	0.00	0.00	OHIO_CREEK.MBL (SSTVD)
7,500.0	21.72	349.43	7,012.9	2,544.1	-456.7	2,584.7	0.00	0.00	
7,600.0	21.72	349.43	7,105.8	2,580.4	-463.5	2,621.7	0.00	0.00	
7,700.0	21.72	349.43	7,198.7	2,616.8	-470.2	2,658.7	0.00	0.00	
7,800.0	21.72	349.43	7,291.6	2,653.2	-477.0	2,695.7	0.00	0.00	
7,838.3	21.72	349.43	7,327.2	2,667.1	-479.6	2,709.9	0.00	0.00	Start Drop -3.00
7,873.5	20.67	349.43	7,360.0	2,679.6	-482.0	2,722.6	3.00	-3.00	WILLIAMS_FORK.MBL (SSTVD)
7,900.0	19.87	349.43	7,384.9	2,688.7	-483.7	2,731.8	3.00	-3.00	
8,000.0	16.87	349.43	7,479.8	2,719.6	-489.4	2,763.3	3.00	-3.00	
8,100.0	13.87	349.43	7,576.2	2,745.7	-494.3	2,789.8	3.00	-3.00	
8,200.0	10.87	349.43	7,673.9	2,766.7	-498.2	2,811.2	3.00	-3.00	
8,300.0	7.87	349.43	7,772.5	2,782.7	-501.2	2,827.5	3.00	-3.00	
8,400.0	4.87	349.43	7,871.9	2,793.7	-503.3	2,838.6	3.00	-3.00	
8,500.0	1.87	349.43	7,971.7	2,799.4	-504.3	2,844.5	3.00	-3.00	
8,562.3	0.00	0.00	8,034.0	2,800.4	-504.5	2,845.5	3.00	-3.00	Start 2035.0 hold at 8562.3 MD
8,600.0	0.00	0.00	8,071.7	2,800.4	-504.5	2,845.5	0.00	0.00	
8,662.3	0.00	0.00	8,134.0	2,800.4	-504.5	2,845.5	0.00	0.00	TOP_GAS.MBL (SSTVD)
8,700.0	0.00	0.00	8,171.7	2,800.4	-504.5	2,845.5	0.00	0.00	
8,800.0	0.00	0.00	8,271.7	2,800.4	-504.5	2,845.5	0.00	0.00	
8,900.0	0.00	0.00	8,371.7	2,800.4	-504.5	2,845.5	0.00	0.00	
9,000.0	0.00	0.00	8,471.7	2,800.4	-504.5	2,845.5	0.00	0.00	
9,100.0	0.00	0.00	8,571.7	2,800.4	-504.5	2,845.5	0.00	0.00	
9,200.0	0.00	0.00	8,671.7	2,800.4	-504.5	2,845.5	0.00	0.00	
9,300.0	0.00	0.00	8,771.7	2,800.4	-504.5	2,845.5	0.00	0.00	
9,400.0	0.00	0.00	8,871.7	2,800.4	-504.5	2,845.5	0.00	0.00	
9,500.0	0.00	0.00	8,971.7	2,800.4	-504.5	2,845.5	0.00	0.00	

Planning Report

Database:	USA EDM 5000 Multi Users DB	Local Co-ordinate Reference:	Well BATTLEMENT MESA 11C-26 795
Company:	Caerus Oil & Gas	TVD Reference:	30' KB @ 8994.0usft
Project:	Garfield County, CO (UTM 12N)	MD Reference:	30' KB @ 8994.0usft
Site:	S26-T6S-R95W (26K)	North Reference:	True
Well:	BATTLEMENT MESA 11C-26 795	Survey Calculation Method:	Minimum Curvature
Wellbore:	OH		
Design:	PLAN #1		

Planned Survey									
Measured Depth (usft)	Inclination (°)	Azimuth (°)	Vertical Depth (usft)	+N/-S (usft)	+E/-W (usft)	Vertical Section (usft)	Dogleg Rate (°/100usft)	Build Rate (°/100u)	Comments / Formations
9,600.0	0.00	0.00	9,071.7	2,800.4	-504.5	2,845.5	0.00	0.00	
9,700.0	0.00	0.00	9,171.7	2,800.4	-504.5	2,845.5	0.00	0.00	
9,800.0	0.00	0.00	9,271.7	2,800.4	-504.5	2,845.5	0.00	0.00	
9,900.0	0.00	0.00	9,371.7	2,800.4	-504.5	2,845.5	0.00	0.00	
9,922.3	0.00	0.00	9,394.0	2,800.4	-504.5	2,845.5	0.00	0.00	CAMEO.MBL (SSTVD)
10,000.0	0.00	0.00	9,471.7	2,800.4	-504.5	2,845.5	0.00	0.00	
10,100.0	0.00	0.00	9,571.7	2,800.4	-504.5	2,845.5	0.00	0.00	
10,200.0	0.00	0.00	9,671.7	2,800.4	-504.5	2,845.5	0.00	0.00	
10,300.0	0.00	0.00	9,771.7	2,800.4	-504.5	2,845.5	0.00	0.00	
10,400.0	0.00	0.00	9,871.7	2,800.4	-504.5	2,845.5	0.00	0.00	
10,447.3	0.00	0.00	9,919.0	2,800.4	-504.5	2,845.5	0.00	0.00	ROLLINS.MBL (SSTVD)
10,500.0	0.00	0.00	9,971.7	2,800.4	-504.5	2,845.5	0.00	0.00	
10,597.3	0.00	0.00	10,069.0	2,800.4	-504.5	2,845.5	0.00	0.00	TD at 10597.3 - TD.MBL (SSTVD)

Targets									
Target Name	Dip Angle (°)	Dip Dir. (°)	TVD (usft)	+N/-S (usft)	+E/-W (usft)	Northing (usft)	Easting (usft)	Latitude	Longitude
B MESA 11C-26 795 PB - hit/miss target - Shape - Circle (radius 50.0)	0.00	0.00	10,069.0	2,800.4	-504.5	14,326,843.40	2,495,917.70	39.413470	-107.971306

Formations					
Measured Depth (usft)	Vertical Depth (usft)	Name	Lithology	Dip (°)	Dip Direction (°)
7,493.6	7,007.0	OHIO_CREEK.MBL (SSTVD)		0.00	
7,873.5	7,360.0	WILLIAMS_FORK.MBL (SSTVD)		0.00	
8,662.3	8,134.0	TOP_GAS.MBL (SSTVD)		0.00	
9,922.3	9,394.0	CAMEO.MBL (SSTVD)		0.00	
10,447.3	9,919.0	ROLLINS.MBL (SSTVD)		0.00	
10,597.3	10,069.0	TD.MBL (SSTVD)		0.00	

Plan Annotations				
Measured Depth (usft)	Vertical Depth (usft)	+N/-S (usft)	+E/-W (usft)	Comment
150.0	150.0	0.0	0.0	Start Build 3.00
650.0	644.3	65.1	0.0	Start DLS 3.00 TFO -31.47
899.1	880.7	142.7	-8.5	Start 6939.2 hold at 899.1 MD
7,838.3	7,327.2	2,667.1	-479.6	Start Drop -3.00
8,562.3	8,034.0	2,800.4	-504.5	Start 2035.0 hold at 8562.3 MD
10,597.3	10,069.0	2,800.4	-504.5	TD at 10597.3