



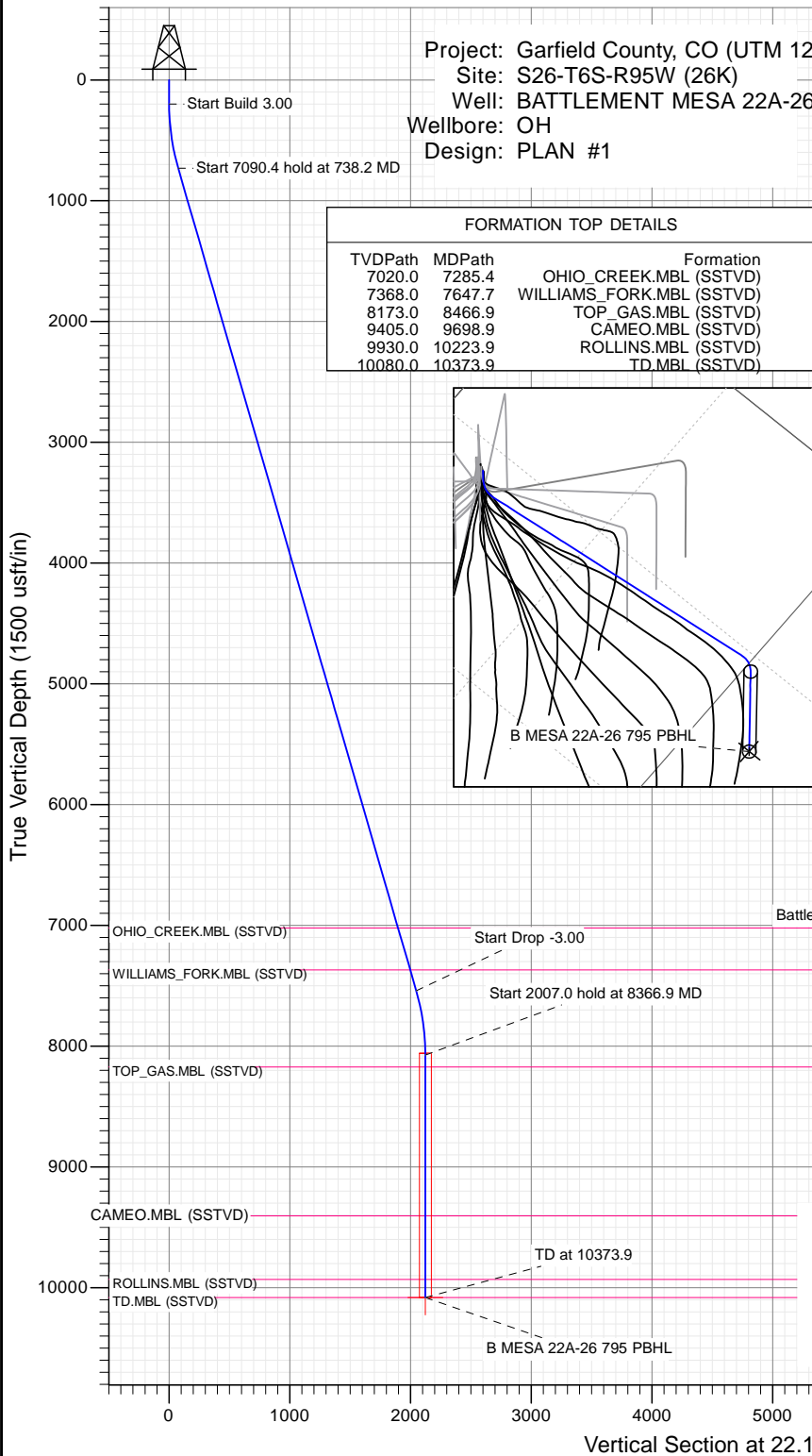
SECTION DETAILS

Sec	MD	Inc	Azi	TVD	+N/-S	+E/-W	Dleg	TFace	VSect	Target
1	0.0	0.00	0.00	0.0	0.0	0.0	0.00	0.00	0.0	
2	200.0	0.00	0.00	200.0	0.0	0.0	0.00	0.00	0.0	
3	738.2	16.15	22.14	731.1	69.8	28.4	3.00	22.14	75.3	
4	7828.7	16.15	22.14	7541.9	1896.3	771.5	0.00	0.00	2047.2	
5	8366.9	0.00	0.00	8073.0	1966.0	799.9	3.00	180.00	2122.5	B MESA 22A-26 795 PBHL
6	10373.9	0.00	0.00	10080.0	1966.0	799.9	0.00	0.00	2122.5	

Project: Garfield County, CO (UTM 12)  
 Site: S26-T6S-R95W (26K)  
 Well: BATTLEMENT MESA 22A-26  
 Wellbore: OH  
 Design: PLAN #1

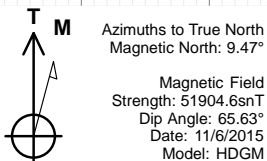
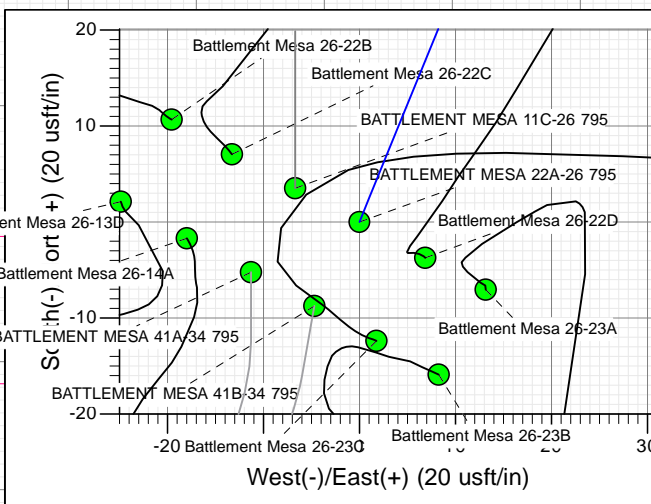
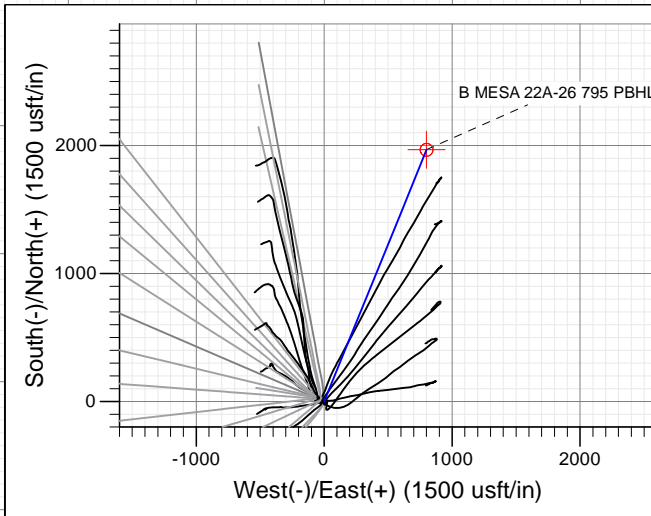
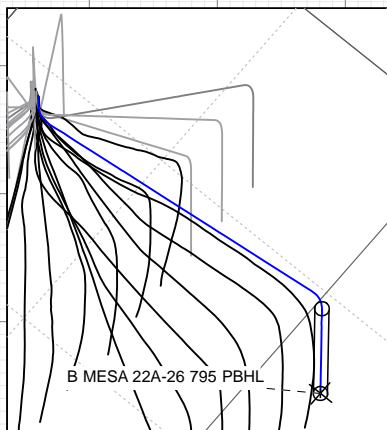
PLAN #1  
 BATTLEMENT MESA 22A-26 795  
 15XXX; LR  
 30 KB @ 8994.0usft  
 Ground Level @ 8964.0  
 NAD 1927 - Western US  
 Well BATTLEMENT MESA 22A-26 795, True North

Type	Target	Azimuth	Origin	N/S	E/W	From
TD	No Target (Freehand)	22.14	Type Slot	0.0	0.0	TVD
Name		TVD	+N/-S	+E/-W	Latitude	Longitude
B MESA 22A-26 795 PBHL		10080.0	1966.0	799.9	39.411171	-107.966668



FORMATION TOP DETAILS

TVDPath	MDPath	Formation
7020.0	7285.4	OHIO_CREEK.MBL (SSTVD)
7368.0	7647.7	WILLIAMS_FORK.MBL (SSTVD)
8173.0	8466.9	TOP_GAS.MBL (SSTVD)
9405.0	9698.9	CAMEO.MBL (SSTVD)
9930.0	10223.9	ROLLINS.MBL (SSTVD)
10080.0	10373.9	TD.MBL (SSTVD)



CASING DETAILS

No casing data is available



WELL DETAILS: BATTLEMENT MESA 22A-26 795

+N/-S	+E/-W	Northing	Ground Level:	8964.0	Latitude	Longitude
0.0	0.0	14324058.20	Easting	2496522.80	39.405775	-107.969498



## Planning Report

<b>Database:</b>	USA EDM 5000 Multi Users DB	<b>Local Co-ordinate Reference:</b>	Well BATTLEMENT MESA 22A-26 795
<b>Company:</b>	Caerus Oil & Gas	<b>TVD Reference:</b>	30' KB @ 8994.0usft
<b>Project:</b>	Garfield County, CO (UTM 12N)	<b>MD Reference:</b>	30' KB @ 8994.0usft
<b>Site:</b>	S26-T6S-R95W (26K)	<b>North Reference:</b>	True
<b>Well:</b>	BATTLEMENT MESA 22A-26 795	<b>Survey Calculation Method:</b>	Minimum Curvature
<b>Wellbore:</b>	OH		
<b>Design:</b>	PLAN #1		

<b>Project</b>	Garfield County, CO (UTM 12N)		
<b>Map System:</b>	Universal Transverse Mercator (US Survey Feet)	<b>System Datum:</b>	Mean Sea Level
<b>Geo Datum:</b>	NAD 1927 - Western US		
<b>Map Zone:</b>	Zone 12N (114 W to 108 W)		

<b>Site</b>	S26-T6S-R95W (26K)				
<b>Site Position:</b>		<b>Northing:</b>	14,324,088.50 usft	<b>Latitude:</b>	39.405864
<b>From:</b>	Map	<b>Easting:</b>	2,496,462.30 usft	<b>Longitude:</b>	-107.969708
<b>Position Uncertainty:</b>	0.0 usft	<b>Slot Radius:</b>	13-3/16"	<b>Grid Convergence:</b>	1.92 °

<b>Well</b>	BATTLEMENT MESA 22A-26 795					
<b>Well Position</b>	<b>+N/-S</b>	0.0 usft	<b>Northing:</b>	14,324,058.20 usft	<b>Latitude:</b>	39.405775
	<b>+E/-W</b>	0.0 usft	<b>Easting:</b>	2,496,522.80 usft	<b>Longitude:</b>	-107.969498
<b>Position Uncertainty</b>		0.0 usft	<b>Wellhead Elevation:</b>	0.0 usft	<b>Ground Level:</b>	8,964.0 usft

<b>Wellbore</b>	OH				
<b>Magnetics</b>	<b>Model Name</b>	<b>Sample Date</b>	<b>Declination (°)</b>	<b>Dip Angle (°)</b>	<b>Field Strength (nT)</b>
	HDGM	11/6/2015	9.47	65.63	51,905

<b>Design</b>	PLAN #1			
<b>Audit Notes:</b>				
<b>Version:</b>	<b>Phase:</b>	PLAN	<b>Tie On Depth:</b>	0.0
<b>Vertical Section:</b>	<b>Depth From (TVD) (usft)</b>	<b>+N/-S (usft)</b>	<b>+E/-W (usft)</b>	<b>Direction (°)</b>
	0.0	0.0	0.0	22.14

Plan Sections										
Measured Depth (usft)	Inclination (°)	Azimuth (°)	Vertical Depth (usft)	+N/-S (usft)	+E/-W (usft)	Dogleg Rate (°/100usft)	Build Rate (°/100usft)	Turn Rate (°/100usft)	TFO (°)	Target
0.0	0.00	0.00	0.0	0.0	0.0	0.00	0.00	0.00	0.00	
200.0	0.00	0.00	200.0	0.0	0.0	0.00	0.00	0.00	0.00	
738.2	16.15	22.14	731.1	69.8	28.4	3.00	3.00	0.00	22.14	
7,828.7	16.15	22.14	7,541.9	1,896.3	771.5	0.00	0.00	0.00	0.00	
8,366.9	0.00	0.00	8,073.0	1,966.0	799.9	3.00	-3.00	0.00	180.00	
10,373.9	0.00	0.00	10,080.0	1,966.0	799.9	0.00	0.00	0.00	0.00	B MESA 22A-26 795 I

## Planning Report

<b>Database:</b>	USA EDM 5000 Multi Users DB	<b>Local Co-ordinate Reference:</b>	Well BATTLEMENT MESA 22A-26 795
<b>Company:</b>	Caerus Oil & Gas	<b>TVD Reference:</b>	30' KB @ 8994.0usft
<b>Project:</b>	Garfield County, CO (UTM 12N)	<b>MD Reference:</b>	30' KB @ 8994.0usft
<b>Site:</b>	S26-T6S-R95W (26K)	<b>North Reference:</b>	True
<b>Well:</b>	BATTLEMENT MESA 22A-26 795	<b>Survey Calculation Method:</b>	Minimum Curvature
<b>Wellbore:</b>	OH		
<b>Design:</b>	PLAN #1		

Planned Survey									
Measured Depth (usft)	Inclination (°)	Azimuth (°)	Vertical Depth (usft)	+N/-S (usft)	+E/-W (usft)	Vertical Section (usft)	Dogleg Rate (°/100usft)	Build Rate (°/100u)	Comments / Formations
0.0	0.00	0.00	0.0	0.0	0.0	0.0	0.00	0.00	
100.0	0.00	0.00	100.0	0.0	0.0	0.0	0.00	0.00	
200.0	0.00	0.00	200.0	0.0	0.0	0.0	0.00	0.00	Start Build 3.00
300.0	3.00	22.14	300.0	2.4	1.0	2.6	3.00	3.00	
400.0	6.00	22.14	399.6	9.7	3.9	10.5	3.00	3.00	
500.0	9.00	22.14	498.8	21.8	8.9	23.5	3.00	3.00	
600.0	12.00	22.14	597.1	38.7	15.7	41.7	3.00	3.00	
700.0	15.00	22.14	694.3	60.3	24.5	65.1	3.00	3.00	
738.2	16.15	22.14	731.1	69.8	28.4	75.3	3.00	3.00	Start 7090.4 hold at 738.2 MD
800.0	16.15	22.14	790.5	85.7	34.9	92.5	0.00	0.00	
900.0	16.15	22.14	886.5	111.5	45.3	120.3	0.00	0.00	
1,000.0	16.15	22.14	982.6	137.2	55.8	148.1	0.00	0.00	
1,100.0	16.15	22.14	1,078.6	163.0	66.3	175.9	0.00	0.00	
1,200.0	16.15	22.14	1,174.7	188.7	76.8	203.8	0.00	0.00	
1,300.0	16.15	22.14	1,270.7	214.5	87.3	231.6	0.00	0.00	
1,400.0	16.15	22.14	1,366.8	240.3	97.7	259.4	0.00	0.00	
1,500.0	16.15	22.14	1,462.9	266.0	108.2	287.2	0.00	0.00	
1,600.0	16.15	22.14	1,558.9	291.8	118.7	315.0	0.00	0.00	
1,700.0	16.15	22.14	1,655.0	317.5	129.2	342.8	0.00	0.00	
1,800.0	16.15	22.14	1,751.0	343.3	139.7	370.6	0.00	0.00	
1,900.0	16.15	22.14	1,847.1	369.1	150.2	398.4	0.00	0.00	
2,000.0	16.15	22.14	1,943.1	394.8	160.6	426.2	0.00	0.00	
2,100.0	16.15	22.14	2,039.2	420.6	171.1	454.0	0.00	0.00	
2,200.0	16.15	22.14	2,135.2	446.3	181.6	481.9	0.00	0.00	
2,300.0	16.15	22.14	2,231.3	472.1	192.1	509.7	0.00	0.00	
2,400.0	16.15	22.14	2,327.4	497.9	202.6	537.5	0.00	0.00	
2,500.0	16.15	22.14	2,423.4	523.6	213.0	565.3	0.00	0.00	
2,600.0	16.15	22.14	2,519.5	549.4	223.5	593.1	0.00	0.00	
2,700.0	16.15	22.14	2,615.5	575.1	234.0	620.9	0.00	0.00	
2,800.0	16.15	22.14	2,711.6	600.9	244.5	648.7	0.00	0.00	
2,900.0	16.15	22.14	2,807.6	626.6	255.0	676.5	0.00	0.00	
3,000.0	16.15	22.14	2,903.7	652.4	265.4	704.3	0.00	0.00	
3,100.0	16.15	22.14	2,999.7	678.2	275.9	732.1	0.00	0.00	
3,200.0	16.15	22.14	3,095.8	703.9	286.4	760.0	0.00	0.00	
3,300.0	16.15	22.14	3,191.8	729.7	296.9	787.8	0.00	0.00	
3,400.0	16.15	22.14	3,287.9	755.4	307.4	815.6	0.00	0.00	
3,500.0	16.15	22.14	3,384.0	781.2	317.8	843.4	0.00	0.00	
3,600.0	16.15	22.14	3,480.0	807.0	328.3	871.2	0.00	0.00	
3,700.0	16.15	22.14	3,576.1	832.7	338.8	899.0	0.00	0.00	
3,800.0	16.15	22.14	3,672.1	858.5	349.3	926.8	0.00	0.00	
3,900.0	16.15	22.14	3,768.2	884.2	359.8	954.6	0.00	0.00	
4,000.0	16.15	22.14	3,864.2	910.0	370.2	982.4	0.00	0.00	
4,100.0	16.15	22.14	3,960.3	935.8	380.7	1,010.2	0.00	0.00	
4,200.0	16.15	22.14	4,056.3	961.5	391.2	1,038.1	0.00	0.00	
4,300.0	16.15	22.14	4,152.4	987.3	401.7	1,065.9	0.00	0.00	
4,400.0	16.15	22.14	4,248.5	1,013.0	412.2	1,093.7	0.00	0.00	
4,500.0	16.15	22.14	4,344.5	1,038.8	422.6	1,121.5	0.00	0.00	
4,600.0	16.15	22.14	4,440.6	1,064.6	433.1	1,149.3	0.00	0.00	
4,700.0	16.15	22.14	4,536.6	1,090.3	443.6	1,177.1	0.00	0.00	
4,800.0	16.15	22.14	4,632.7	1,116.1	454.1	1,204.9	0.00	0.00	
4,900.0	16.15	22.14	4,728.7	1,141.8	464.6	1,232.7	0.00	0.00	
5,000.0	16.15	22.14	4,824.8	1,167.6	475.0	1,260.5	0.00	0.00	

## Planning Report

<b>Database:</b>	USA EDM 5000 Multi Users DB	<b>Local Co-ordinate Reference:</b>	Well BATTLEMENT MESA 22A-26 795
<b>Company:</b>	Caerus Oil & Gas	<b>TVD Reference:</b>	30' KB @ 8994.0usft
<b>Project:</b>	Garfield County, CO (UTM 12N)	<b>MD Reference:</b>	30' KB @ 8994.0usft
<b>Site:</b>	S26-T6S-R95W (26K)	<b>North Reference:</b>	True
<b>Well:</b>	BATTLEMENT MESA 22A-26 795	<b>Survey Calculation Method:</b>	Minimum Curvature
<b>Wellbore:</b>	OH		
<b>Design:</b>	PLAN #1		

Planned Survey									
Measured Depth (usft)	Inclination (°)	Azimuth (°)	Vertical Depth (usft)	+N/-S (usft)	+E/-W (usft)	Vertical Section (usft)	Dogleg Rate (°/100usft)	Build Rate (°/100u)	Comments / Formations
5,100.0	16.15	22.14	4,920.8	1,193.4	485.5	1,288.3	0.00	0.00	
5,200.0	16.15	22.14	5,016.9	1,219.1	496.0	1,316.2	0.00	0.00	
5,300.0	16.15	22.14	5,113.0	1,244.9	506.5	1,344.0	0.00	0.00	
5,400.0	16.15	22.14	5,209.0	1,270.6	517.0	1,371.8	0.00	0.00	
5,500.0	16.15	22.14	5,305.1	1,296.4	527.4	1,399.6	0.00	0.00	
5,600.0	16.15	22.14	5,401.1	1,322.2	537.9	1,427.4	0.00	0.00	
5,700.0	16.15	22.14	5,497.2	1,347.9	548.4	1,455.2	0.00	0.00	
5,800.0	16.15	22.14	5,593.2	1,373.7	558.9	1,483.0	0.00	0.00	
5,900.0	16.15	22.14	5,689.3	1,399.4	569.4	1,510.8	0.00	0.00	
6,000.0	16.15	22.14	5,785.3	1,425.2	579.8	1,538.6	0.00	0.00	
6,100.0	16.15	22.14	5,881.4	1,451.0	590.3	1,566.4	0.00	0.00	
6,200.0	16.15	22.14	5,977.4	1,476.7	600.8	1,594.3	0.00	0.00	
6,300.0	16.15	22.14	6,073.5	1,502.5	611.3	1,622.1	0.00	0.00	
6,400.0	16.15	22.14	6,169.6	1,528.2	621.8	1,649.9	0.00	0.00	
6,500.0	16.15	22.14	6,265.6	1,554.0	632.3	1,677.7	0.00	0.00	
6,600.0	16.15	22.14	6,361.7	1,579.8	642.7	1,705.5	0.00	0.00	
6,700.0	16.15	22.14	6,457.7	1,605.5	653.2	1,733.3	0.00	0.00	
6,800.0	16.15	22.14	6,553.8	1,631.3	663.7	1,761.1	0.00	0.00	
6,900.0	16.15	22.14	6,649.8	1,657.0	674.2	1,788.9	0.00	0.00	
7,000.0	16.15	22.14	6,745.9	1,682.8	684.7	1,816.7	0.00	0.00	
7,100.0	16.15	22.14	6,841.9	1,708.6	695.1	1,844.5	0.00	0.00	
7,200.0	16.15	22.14	6,938.0	1,734.3	705.6	1,872.4	0.00	0.00	
7,285.4	16.15	22.14	7,020.0	1,756.3	714.6	1,896.1	0.00	0.00	OHIO_CREEK.MBL (SSTVD)
7,300.0	16.15	22.14	7,034.1	1,760.1	716.1	1,900.2	0.00	0.00	
7,400.0	16.15	22.14	7,130.1	1,785.8	726.6	1,928.0	0.00	0.00	
7,500.0	16.15	22.14	7,226.2	1,811.6	737.1	1,955.8	0.00	0.00	
7,600.0	16.15	22.14	7,322.2	1,837.4	747.5	1,983.6	0.00	0.00	
7,647.7	16.15	22.14	7,368.0	1,849.6	752.5	1,996.9	0.00	0.00	WILLIAMS_FORK.MBL (SSTVD)
7,700.0	16.15	22.14	7,418.3	1,863.1	758.0	2,011.4	0.00	0.00	
7,800.0	16.15	22.14	7,514.3	1,888.9	768.5	2,039.2	0.00	0.00	
7,828.7	16.15	22.14	7,541.9	1,896.3	771.5	2,047.2	0.00	0.00	Start Drop -3.00
7,900.0	14.01	22.14	7,610.7	1,913.4	778.5	2,065.7	3.00	-3.00	
8,000.0	11.01	22.14	7,708.4	1,933.5	786.7	2,087.4	3.00	-3.00	
8,100.0	8.01	22.14	7,807.0	1,948.8	792.9	2,103.9	3.00	-3.00	
8,200.0	5.01	22.14	7,906.3	1,959.3	797.1	2,115.2	3.00	-3.00	
8,300.0	2.01	22.14	8,006.1	1,965.0	799.5	2,121.4	3.00	-3.00	
8,366.9	0.00	0.00	8,073.0	1,966.0	799.9	2,122.5	3.00	-3.00	Start 2007.0 hold at 8366.9 MD
8,400.0	0.00	0.00	8,106.1	1,966.0	799.9	2,122.5	0.00	0.00	
8,466.9	0.00	0.00	8,173.0	1,966.0	799.9	2,122.5	0.00	0.00	TOP_GAS.MBL (SSTVD)
8,500.0	0.00	0.00	8,206.1	1,966.0	799.9	2,122.5	0.00	0.00	
8,600.0	0.00	0.00	8,306.1	1,966.0	799.9	2,122.5	0.00	0.00	
8,700.0	0.00	0.00	8,406.1	1,966.0	799.9	2,122.5	0.00	0.00	
8,800.0	0.00	0.00	8,506.1	1,966.0	799.9	2,122.5	0.00	0.00	
8,900.0	0.00	0.00	8,606.1	1,966.0	799.9	2,122.5	0.00	0.00	
9,000.0	0.00	0.00	8,706.1	1,966.0	799.9	2,122.5	0.00	0.00	
9,100.0	0.00	0.00	8,806.1	1,966.0	799.9	2,122.5	0.00	0.00	
9,200.0	0.00	0.00	8,906.1	1,966.0	799.9	2,122.5	0.00	0.00	
9,300.0	0.00	0.00	9,006.1	1,966.0	799.9	2,122.5	0.00	0.00	
9,400.0	0.00	0.00	9,106.1	1,966.0	799.9	2,122.5	0.00	0.00	
9,500.0	0.00	0.00	9,206.1	1,966.0	799.9	2,122.5	0.00	0.00	
9,600.0	0.00	0.00	9,306.1	1,966.0	799.9	2,122.5	0.00	0.00	
9,698.9	0.00	0.00	9,405.0	1,966.0	799.9	2,122.5	0.00	0.00	CAMEO.MBL (SSTVD)

## Planning Report

<b>Database:</b>	USA EDM 5000 Multi Users DB	<b>Local Co-ordinate Reference:</b>	Well BATTLEMENT MESA 22A-26 795
<b>Company:</b>	Caerus Oil & Gas	<b>TVD Reference:</b>	30' KB @ 8994.0usft
<b>Project:</b>	Garfield County, CO (UTM 12N)	<b>MD Reference:</b>	30' KB @ 8994.0usft
<b>Site:</b>	S26-T6S-R95W (26K)	<b>North Reference:</b>	True
<b>Well:</b>	BATTLEMENT MESA 22A-26 795	<b>Survey Calculation Method:</b>	Minimum Curvature
<b>Wellbore:</b>	OH		
<b>Design:</b>	PLAN #1		

Planned Survey									
Measured Depth (usft)	Inclination (°)	Azimuth (°)	Vertical Depth (usft)	+N/-S (usft)	+E/-W (usft)	Vertical Section (usft)	Dogleg Rate (°/100usft)	Build Rate (°/100u)	Comments / Formations
9,700.0	0.00	0.00	9,406.1	1,966.0	799.9	2,122.5	0.00	0.00	
9,800.0	0.00	0.00	9,506.1	1,966.0	799.9	2,122.5	0.00	0.00	
9,900.0	0.00	0.00	9,606.1	1,966.0	799.9	2,122.5	0.00	0.00	
10,000.0	0.00	0.00	9,706.1	1,966.0	799.9	2,122.5	0.00	0.00	
10,100.0	0.00	0.00	9,806.1	1,966.0	799.9	2,122.5	0.00	0.00	
10,200.0	0.00	0.00	9,906.1	1,966.0	799.9	2,122.5	0.00	0.00	
10,223.9	0.00	0.00	9,930.0	1,966.0	799.9	2,122.5	0.00	0.00	ROLLINS.MBL (SSTVD)
10,300.0	0.00	0.00	10,006.1	1,966.0	799.9	2,122.5	0.00	0.00	
10,373.9	0.00	0.00	10,080.0	1,966.0	799.9	2,122.5	0.00	0.00	TD at 10373.9 - TD.MBL (SSTVD)

Targets											
Target Name	- hit/miss target	- Shape	Dip Angle (°)	Dip Dir. (°)	TVD (usft)	+N/-S (usft)	+E/-W (usft)	Northing (usft)	Easting (usft)	Latitude	Longitude
B MESA 22A-26 795 PB			0.00	0.00	10,080.0	1,966.0	799.9	14,326,050.00	2,497,256.20	39.411171	-107.966668
- plan hits target center											
- Circle (radius 50.0)											

Formations					
Measured Depth (usft)	Vertical Depth (usft)	Name	Lithology	Dip (°)	Dip Direction (°)
7,285.4	7,020.0	OHIO_CREEK.MBL (SSTVD)		0.00	
7,647.7	7,368.0	WILLIAMS_FORK.MBL (SSTVD)		0.00	
8,466.9	8,173.0	TOP_GAS.MBL (SSTVD)		0.00	
9,698.9	9,405.0	CAMEO.MBL (SSTVD)		0.00	
10,223.9	9,930.0	ROLLINS.MBL (SSTVD)		0.00	
10,373.9	10,080.0	TD.MBL (SSTVD)		0.00	

Plan Annotations				
Measured Depth (usft)	Vertical Depth (usft)	Local Coordinates		Comment
		+N/-S (usft)	+E/-W (usft)	
200.0	200.0	0.0	0.0	Start Build 3.00
738.2	731.1	69.8	28.4	Start 7090.4 hold at 738.2 MD
7,828.7	7,541.9	1,896.3	771.5	Start Drop -3.00
8,366.9	8,073.0	1,966.0	799.9	Start 2007.0 hold at 8366.9 MD
10,373.9	10,080.0	1,966.0	799.9	TD at 10373.9