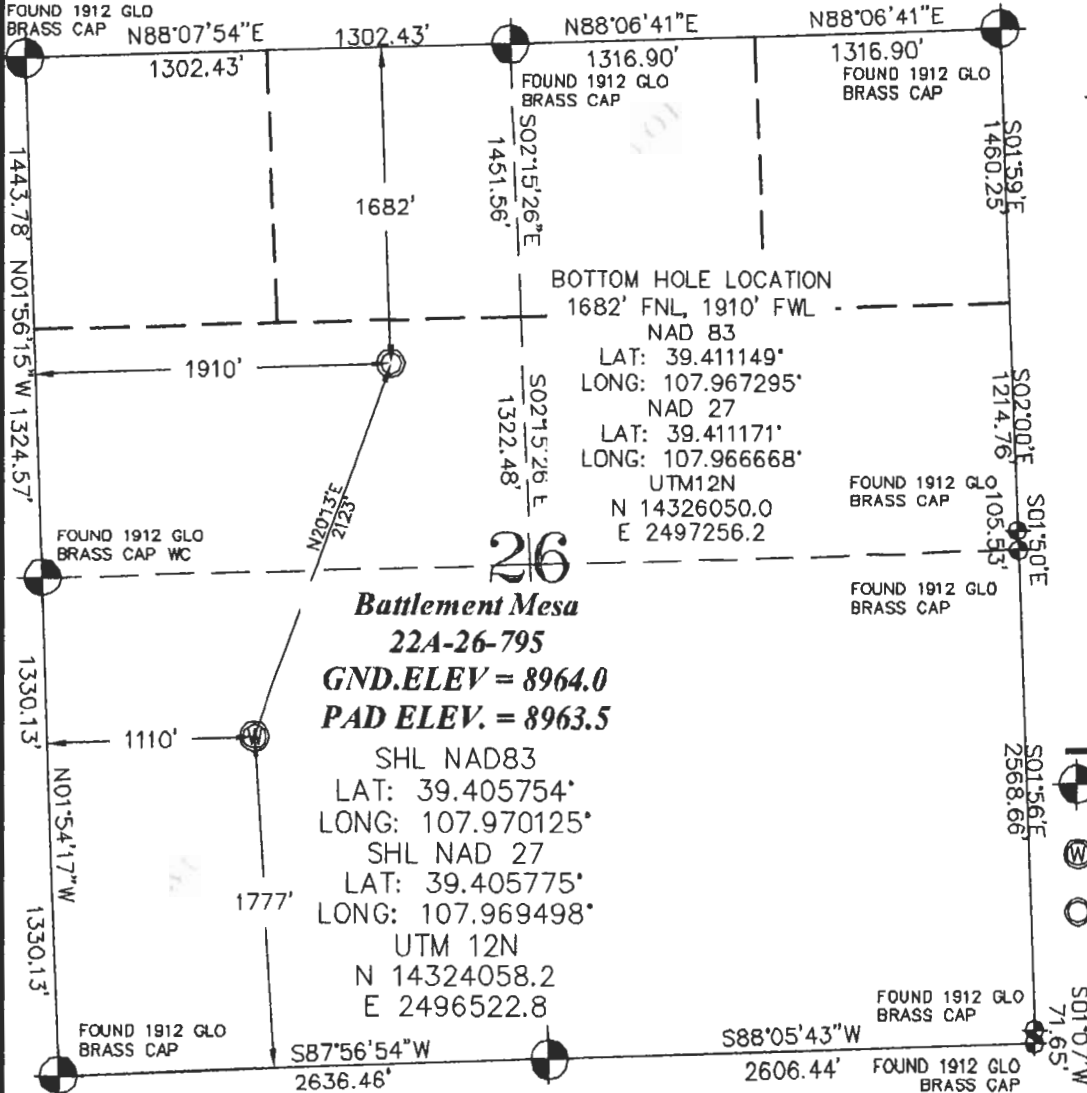


**SEC. 26, T. 7 S., R. 95 W. OF THE 6TH P.M.**

**PLAT 1**

**BM 26K-795  
PAD  
LOCATION**



**26**  
**Battlement Mesa**  
**22A-26-795**  
**GND.ELEV = 8964.0**  
**PAD ELEV. = 8963.5**  
SHL NAD83  
LAT: 39.405754°  
LONG: 107.970125°  
SHL NAD 27  
LAT: 39.405775°  
LONG: 107.969498°  
UTM 12N  
N 14324058.2  
E 2496522.8

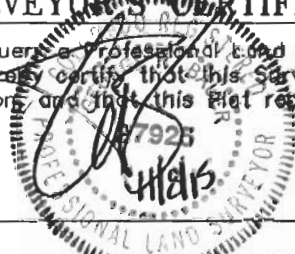
**-LEGEND-**

- FIELD SURVEYED SECTION CORNER LOCATIONS
- FIELD SURVEYED WELL LOCATION
- CALCULATED BOTTOM HOLE LOCATION

**THIS WELL LOCATION PLAT WAS PREPARED FOR CAERUS PICEANCE LLC TO LOCATE THE BATTLEMENT MESA #22A-26-795 WELL, 1777 FEET FROM THE SOUTH LINE AND 1110 FEET FROM THE WEST LINE IN THE NW1/4SW1/4 OF SECTION 26, T. 7 S., R. 95 W. OF THE 6TH P.M. GARFIELD COUNTY, COLORADO.**

**SURVEYOR'S CERTIFICATE**

I, George R. Bauer, a Professional Land Surveyor in the State of Colorado do hereby certify that this Survey was made under my direct supervision and that this Plat represents said Survey.



**REFERENCE NOTES**

- 1) T. 7 S., R. 95 W., 6TH P.M. GLO PLAT.
- 2) U.S.G.S. QUAD: PARACHUTE, CO
- 3) ELEVATIONS BASED ON N.A.V.D. 1988 LIDAR BASED CONTROL PT CP MDN 8
- 4) LATITUDES AND LONGITUDES ARE BASED ON NAD 83, COLORADO CENTRAL ZONE.
- 5) GPS OPERATOR ROBERT WOOD, OBSERVED A PDOP OF 1.9.
- 6) ALL GPS OBSERVATIONS ARE IN COMPLIANCE WITH COGCC RULE NO. 215.
- 7) SURFACE AND BOTTOM HOLE LOCATIONS ARE MEASURED 90' FROM SECTION LINES.



GRAPHIC SCALE IN FEET  
1 INCH = 1000 FEET



**WELL LOCATION PLAT**



**CONSTRUCTION SURVEYS, INC.**  
2012 SUNRISE BLVD. SILT, CO  
81652 (970) 876-5753

SURVEY BY: REW 10/13/15

PDOP: 1.9

DRAWN BY: REW 11/06/15

DWG: CAERUS\BM26K-795

REVISED: